



HAL
open science

Assessment of the MHYDAS-Pesticide-1.0 model in simulating pesticide concentrations in surface waters at plot-scale continuously over decades

Guillaume Métayer, Cécile Dagès, Jean-Stéphane Bailly, David Crevoisier,
Marc Voltz

► To cite this version:

Guillaume Métayer, Cécile Dagès, Jean-Stéphane Bailly, David Crevoisier, Marc Voltz. Assessment of the MHYDAS-Pesticide-1.0 model in simulating pesticide concentrations in surface waters at plot-scale continuously over decades. EGU General Assembly 2022, May 2022, Vienna, Austria. 10.5194/egusphere-egu22-4541 . hal-04089205

HAL Id: hal-04089205

<https://hal.inrae.fr/hal-04089205v1>

Submitted on 4 May 2023

HAL is a multi-disciplinary open access archive for the deposit and dissemination of scientific research documents, whether they are published or not. The documents may come from teaching and research institutions in France or abroad, or from public or private research centers.

L'archive ouverte pluridisciplinaire **HAL**, est destinée au dépôt et à la diffusion de documents scientifiques de niveau recherche, publiés ou non, émanant des établissements d'enseignement et de recherche français ou étrangers, des laboratoires publics ou privés.

EGU General Assembly 2022

25/05/2022

Assessment of the MHYDAS-Pesticide-1.0 model in simulating pesticide concentrations in surface waters at plot-scale continuously over decades

Guillaume Métayer, Cécile Dagès, Jean – Stéphane Bailly, David Crevoisier, and Marc Voltz

A need to assess model performance to reproduce long-term pesticide contamination of surface water

1. Introduction 

Mechanistic model = cost-effective method compared to field studies

2. Materials & Methods

Scarcity of long-term evaluations at field-scale, especially for Mediterranean context
(*e.g. Mudgal et al., 2010, Baffaut et al., 2019*)

3. Results

- Most studies < 1 year (*e.g. Connolly et al., 2001, Malone et al. 2004*)

Poor knowledge about the simulation accuracy of pesticide concentrations in surface water

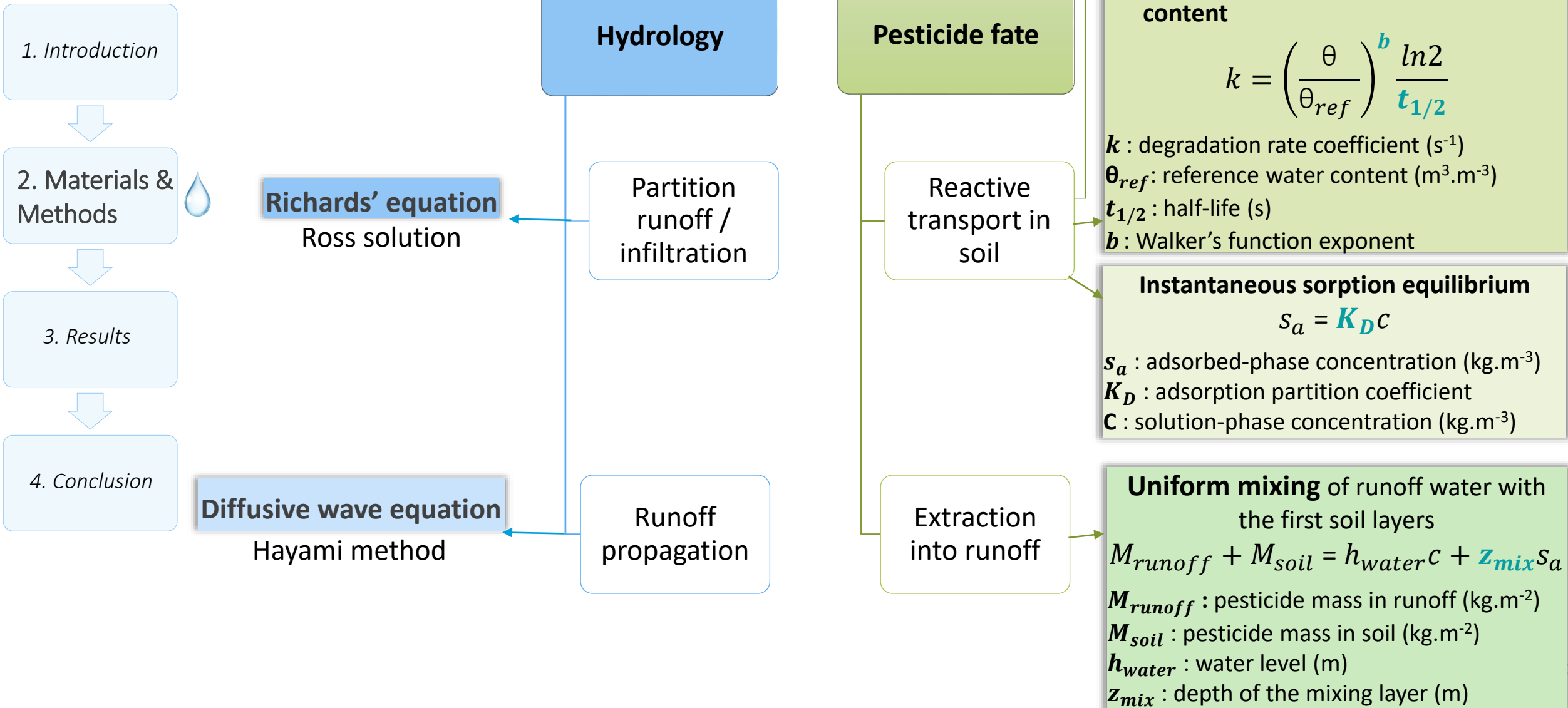
4. Conclusion

Objective of this study :

Assessing the performance of a mechanistic model in **reproducing pesticide concentrations** measured in runoff **at field-scale** on a **multi-year basis**

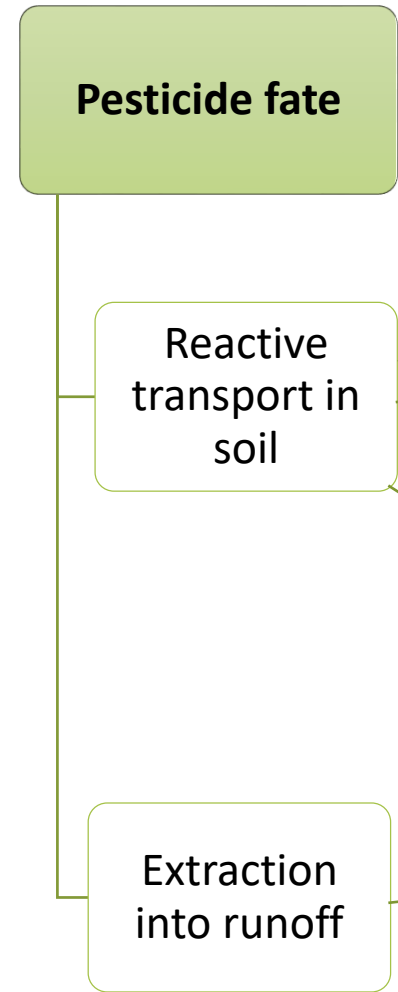
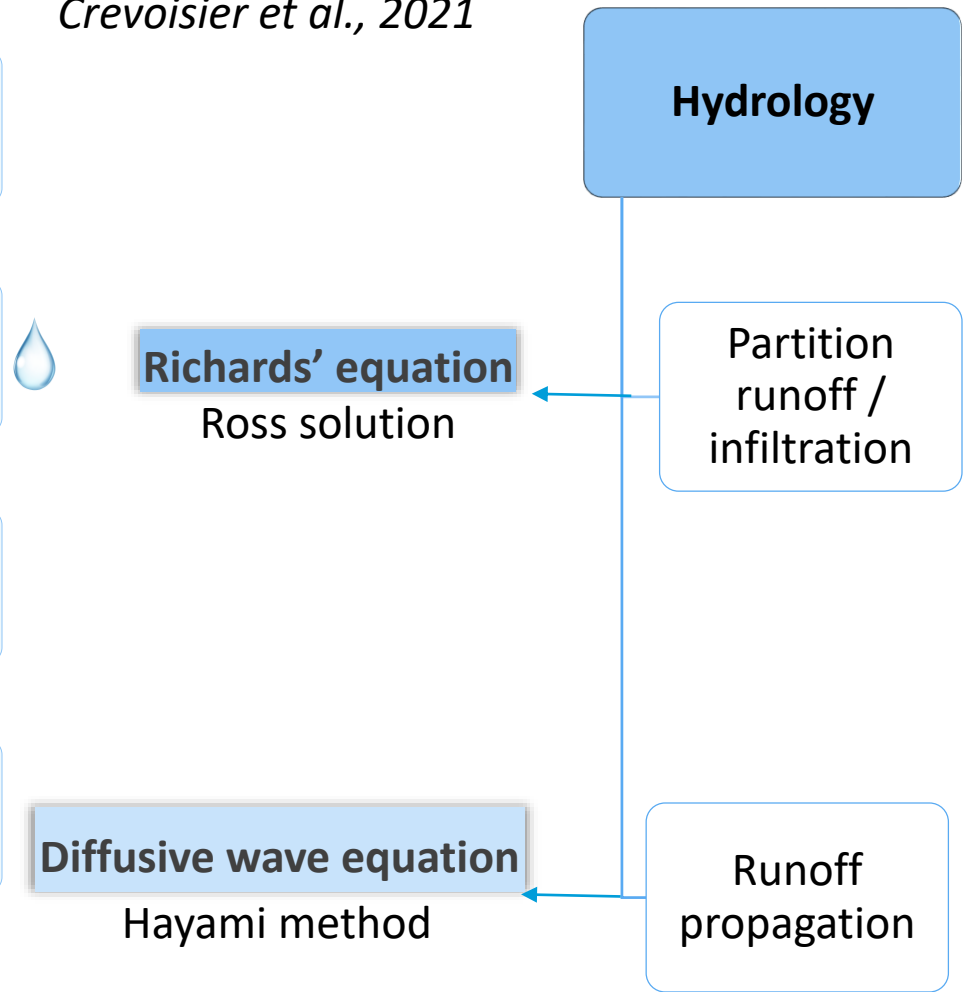
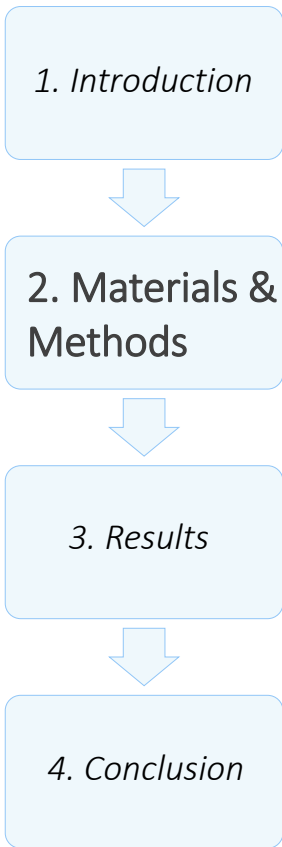
Simulating pesticide concentrations with a standard mechanistic model : MHYDAS-Pesticide-1.0

Crevoisier et al., 2021



Simulating pesticide concentrations with a standard mechanistic model : MHYDAS-Pesticide-1.0

Crevoisier et al., 2021



Convection-diffusion equation

Degradation rate

- First-order kinetics
- Decrease with a decrease in soil water content

$$k = \left(\frac{\theta}{\theta_{ref}} \right)^b \frac{\ln 2}{t_{1/2}}$$

k : degradation rate coefficient (s⁻¹)
 θ_{ref} : reference water content (m³.m⁻³)
 $t_{1/2}$: half-life (s)
 b : Walker's function exponent

Instantaneous sorption equilibrium

$$S_a = K_D C$$

S_a : adsorbed-phase concentration (kg.m⁻³)
 K_D : adsorption partition coefficient
 C : solution-phase concentration (kg.m⁻³)

Uniform mixing of runoff water with the first soil layers

$$M_{runoff} + M_{soil} = h_{water} C + z_{mix} S_a$$

M_{runoff} : pesticide mass in runoff (kg.m⁻²)
 M_{soil} : pesticide mass in soil (kg.m⁻²)
 h_{water} : water level (m)
 z_{mix} : depth of the mixing layer (m)

4 calibrated pesticide parameters : $t_{1/2}$, b , K_D , z_{mix}

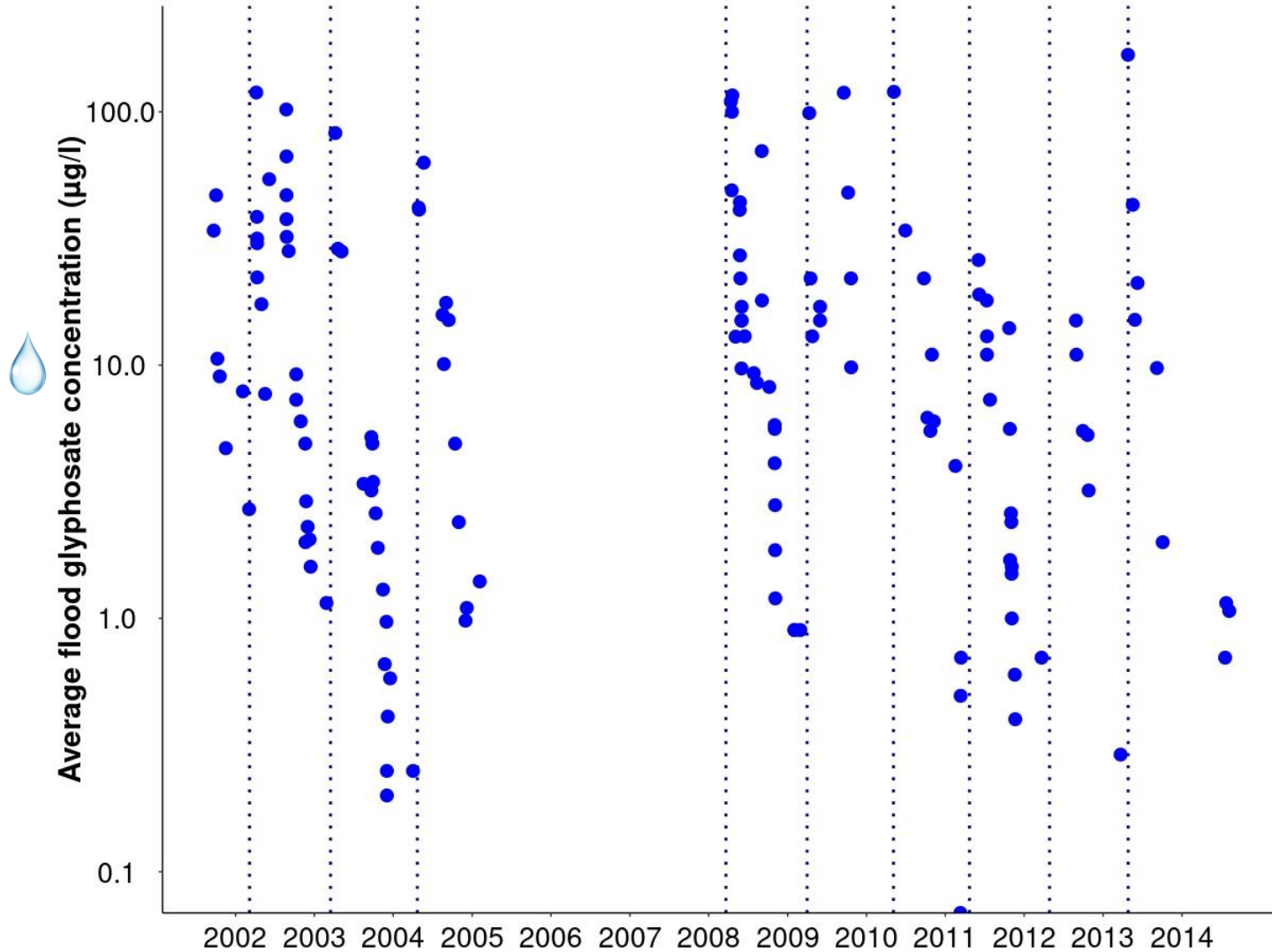
Study area : a vineyard field in the south of France

1. Introduction

2. Materials & Methods

3. Results

4. Conclusion



Outlet measurements :

- Rainfall
- Runoff
- Pesticide concentration

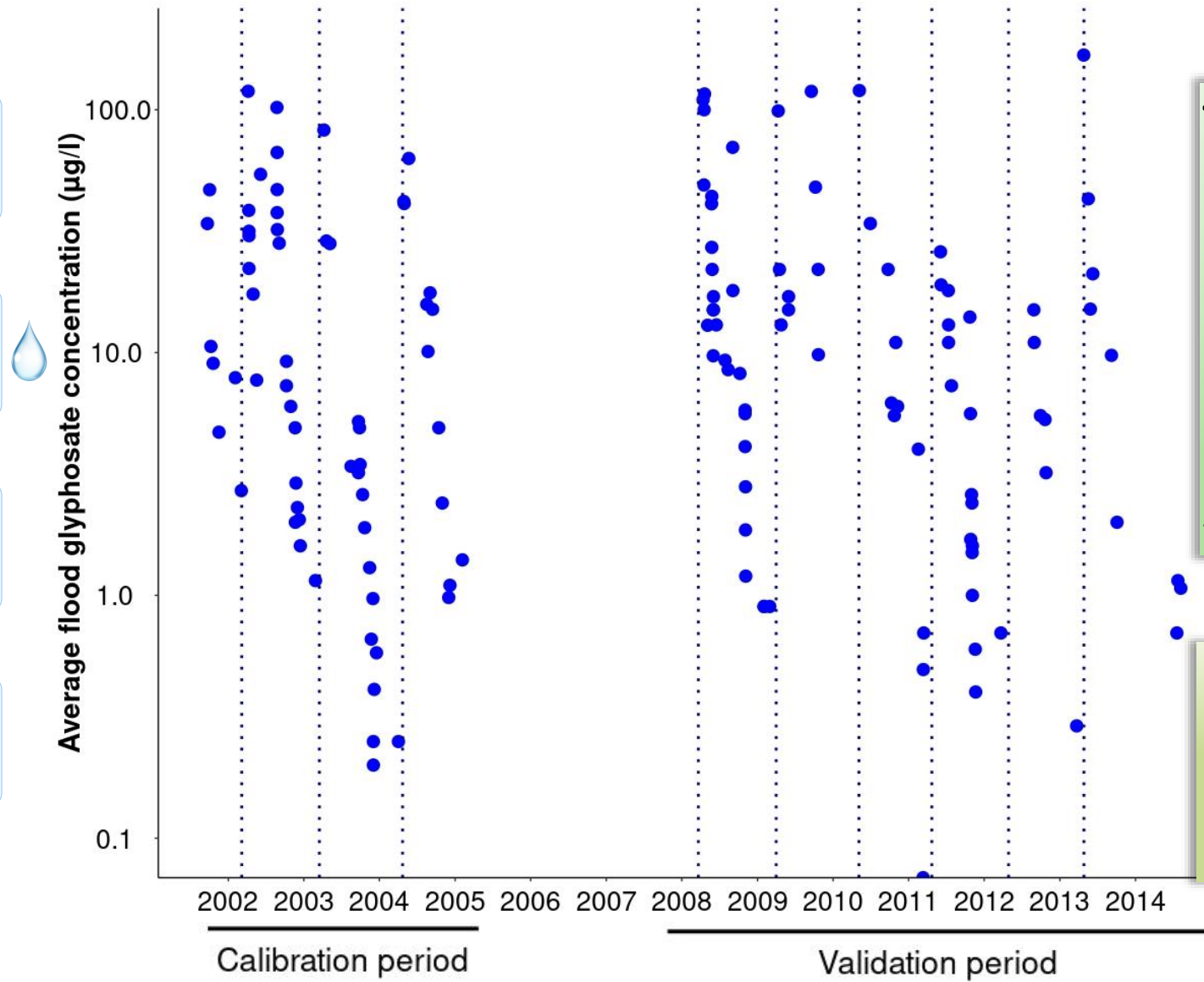


Mediterranean context

High inter and intra-annual hydrological variability

Study area : a vineyard field in the south of France

- 1. Introduction
- 2. Materials & Methods
- 3. Results
- 4. Conclusion



To assess global model performance

↓

Statistical criteria

- NSE**
Nash Sutcliffe efficiency
- PBIAS (%)**
Percent bias

Variables of interest

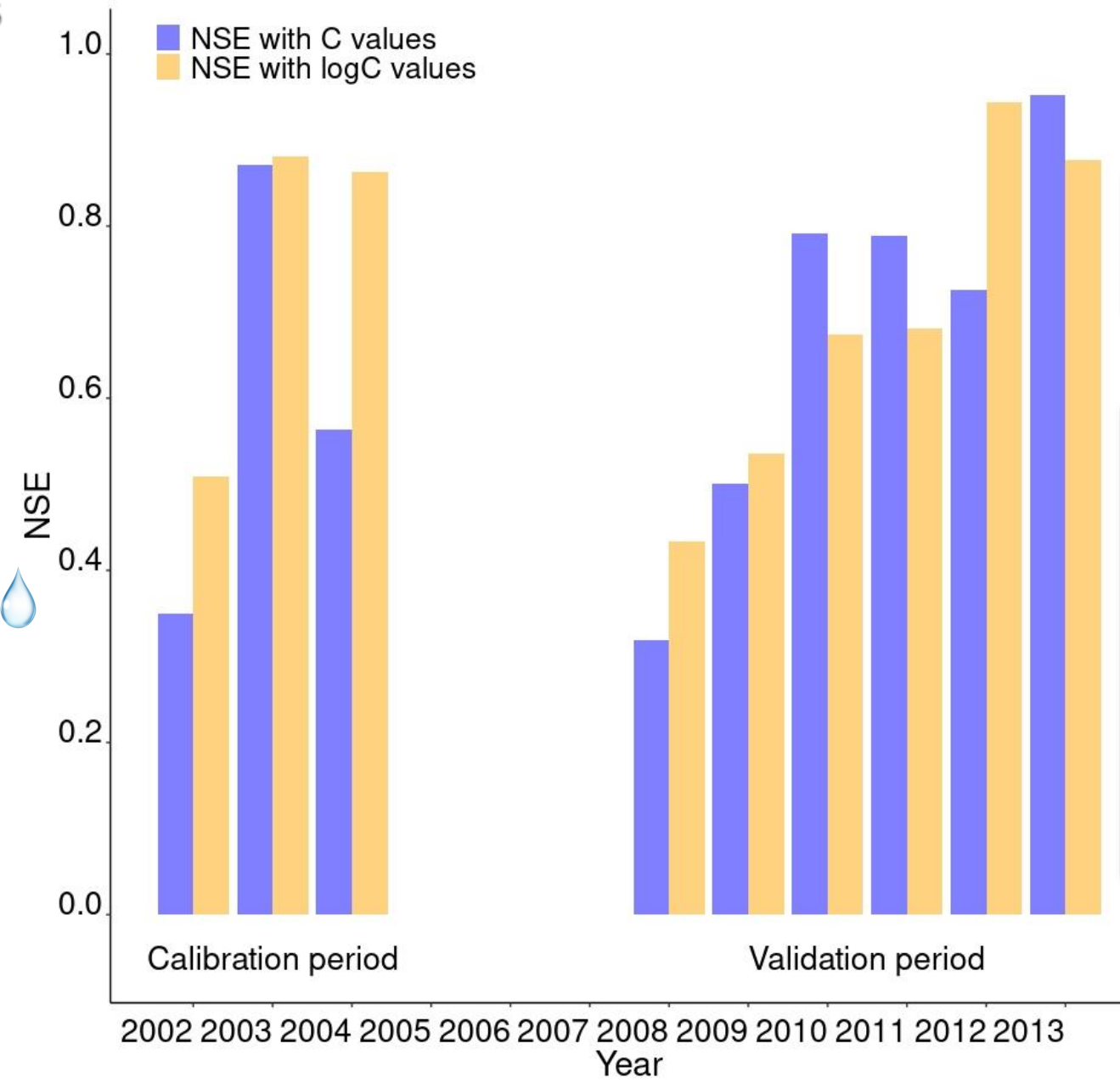
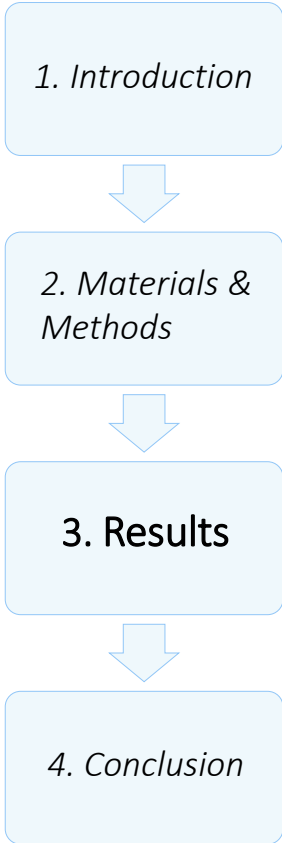
- C**
flood concentration
- logC**
log(flood concentration)

To assess performance in simulating intra-annual variability

↓

Analysis of error structure

Results



Satisfactory performance for C values and logC values

Calibration period :

- $NSE > 0.65$
- $PBIAS \pm 15\%$

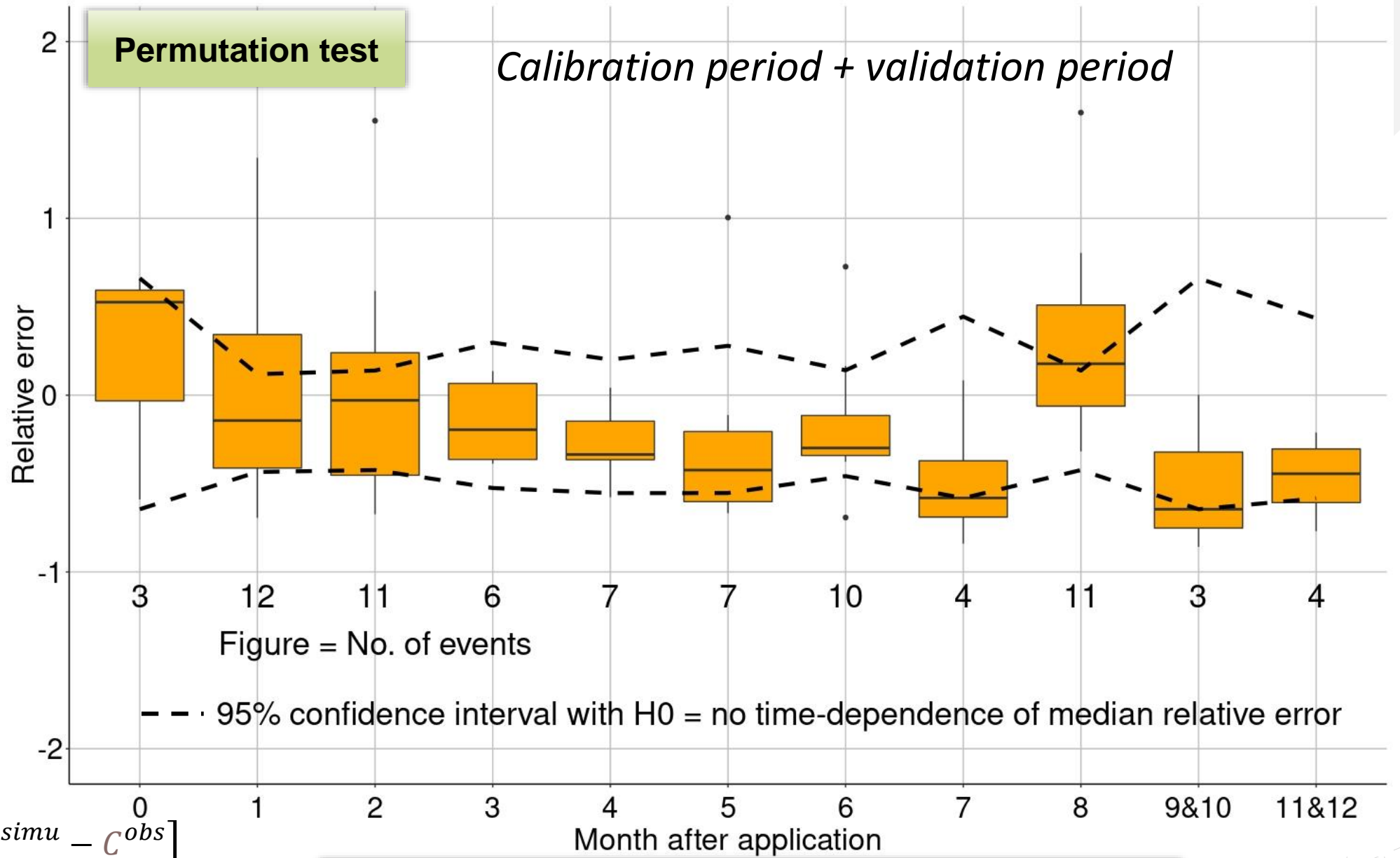
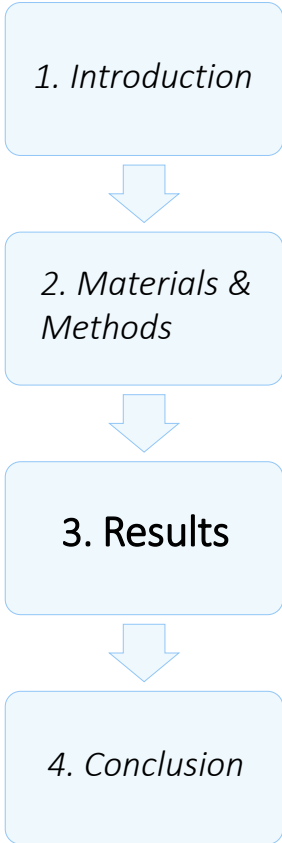
→ « very good » (Moriasi et al., 2015)

Validation period :

- $NSE > 0.5$
- $PBIAS \pm 20\%$

→ « good » (Moriasi et al., 2015)

Results



$$Relative\ error = \left[\frac{C^{simu} - C^{obs}}{C^{obs}} \right]$$

Relative error isn't statistically time-dependent

Conclusions

1. Introduction



2. Materials & Methods



3. Results



4. Conclusion



A **standard mechanistic model** can satisfactorily reproduce **inter and intra-annual variability of pesticide concentrations** in surface water for a **mediterranean context**

Robust calibration achieved with **3 years data**

$t_{1/2}$, K_D , z_{mix} were found to be sensitive to **logC** unlike **Walker's exponent b** despite **expected soil drying effects in Mediterranean contexts**

This work = first MHYDAS-Pesticide-1.0 assessment
Further studies are needed to calibrate the model for other contexts

Thank you for listening

Email : guillaume.metayer@inrae.fr