



HAL
open science

BRC4Env, the Biological Resource Centres for the Environment of AgroBRC-RARe

Sylvia Bruneau, Emmanuelle Artige, Céline Faivre-Primot, Frédéric Marchand, Samuel Mondy, Céline Ratié, Dirk Redecker, Nicolas Ris, Agnès Starck, Sylvie Warot, et al.

► **To cite this version:**

Sylvia Bruneau, Emmanuelle Artige, Céline Faivre-Primot, Frédéric Marchand, Samuel Mondy, et al.. BRC4Env, the Biological Resource Centres for the Environment of AgroBRC-RARe. Journées scientifiques du département ECODIV, Mar 2023, Lyon, France. 2023, 10.15454/TRBJTB. hal-04104201

HAL Id: hal-04104201

<https://hal.inrae.fr/hal-04104201>

Submitted on 23 May 2023

HAL is a multi-disciplinary open access archive for the deposit and dissemination of scientific research documents, whether they are published or not. The documents may come from teaching and research institutions in France or abroad, or from public or private research centers.

L'archive ouverte pluridisciplinaire **HAL**, est destinée au dépôt et à la diffusion de documents scientifiques de niveau recherche, publiés ou non, émanant des établissements d'enseignement et de recherche français ou étrangers, des laboratoires publics ou privés.



Distributed under a Creative Commons Attribution - NonCommercial 4.0 International License

BRC4Env, the Biological Resource Centres for the Environment of AgroBRC-RARe

Sylvia Bruneau¹, Emmanuelle Artige², Céline Faivre-Primot³, Frédéric Marchand⁴, Samuel Mondy³, Céline Ratié⁵, Dirk Redecker³, Nicolas Ris⁶, Agnes Starck⁴, Sylvie Warot⁶ and Christian Mougin¹

¹UMR ECOSYS, Palaiseau; ²UMR CBGP, Montpellier; ³UMR Agroécologie, Dijon; ⁴UE U3E, Rennes;

⁵UR Info&Sols, Orléans; ⁶UMR ISA, Sophia Antipolis

contact-brc4env@inrae.fr

• The network of Biological Resource Centres BRC4Env

BRC4Env is a **network of Biological Resource Centres and collections**, one of the 5 **specialized pillars** of the French research infrastructure **AgroBRC-RARe**.

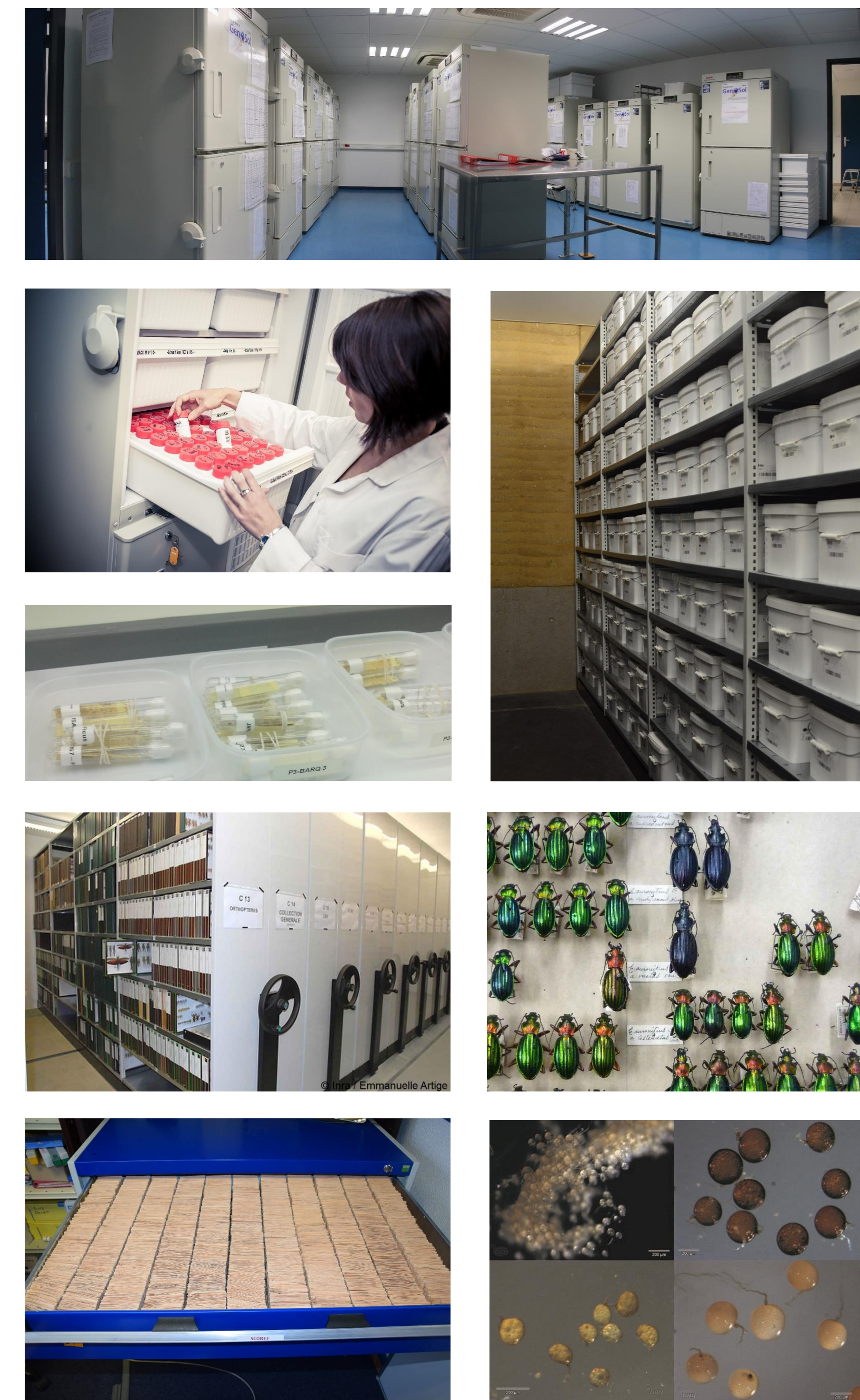
BRC4Env aims at **providing** a strategic **delivery of agro-environmental bioresources** for fundamental and applied **research in environmental and agricultural sciences**. These biological and/or genomic resources are sampled from **soils, agricultural and natural ecosystems**, and preserved in organized collections of microbial, animal (invertebrates and vertebrates) and soil resources. BRC4Env provides these resources available for researchers from academia, but also industry, technology and additional sectors (NGOs, public society...).

• The Biological Resource Centres of BRC4Env

- The Soil Genetic Resources of **GenoSol** associated with the **European Centre for Soil Conservation**, for the conservation of genetic resources (DNA) of soils and whole soils
- The Biological Resource Centre **Egg Parasitoids Collection** “EP-Coll”, that aims to collect, characterize, maintain, investigate and share egg parasitoids strains
- The collection of continental arthropods **CoArCol** (insects and mites collections), comprising series of specimens gathered from all over the world during the last 50 years, preserved dry or in fluid and DNA extracts
- The historical collection of fish scales and tissues **Colisa**, collected by several research units, long-term observatories, and The French Biodiversity Agency
- The International Bank for the Glomeromycota **IBG**, which comprises isolates of arbuscular mycorrhizal fungi

BRC4Env comprises other biological collections (nematods...), associated analytical platforms for resource characterization (Biochem-Env, Genosol...), and is related to a national infrastructure for access to the ecosystems (AnaEE-France)

The BRCs/collections are intended to characterize the environment and its dynamics for agroecology, ecotoxicology or biocontrol research



• The governing bodies of BRC4Env

- A steering committee, comprising the BRC managers, the representatives of BRC4env to the transverse working groups of AgroBRC-RARe, and for their information the heads of laboratories hosting the BRCs
- An International Science Advisory Board (under establishment)
- A referent INRAE division, **Plant health and environment**



<https://www.brc4env.fr/>

<https://doi.org/10.15454/TRBJTB>

<https://www.agrobrc-rare.org/>