



HAL
open science

Poultry welfare in low-input outdoor production systems: the PPILOW project

Anne Collin

► **To cite this version:**

Anne Collin. Poultry welfare in low-input outdoor production systems: the PPILOW project: Introduction to the session. 26th World's Poultry Congress, WPSA, Aug 2022, Paris, France. hal-04129741

HAL Id: hal-04129741

<https://hal.inrae.fr/hal-04129741>

Submitted on 15 Jun 2023

HAL is a multi-disciplinary open access archive for the deposit and dissemination of scientific research documents, whether they are published or not. The documents may come from teaching and research institutions in France or abroad, or from public or private research centers.

L'archive ouverte pluridisciplinaire **HAL**, est destinée au dépôt et à la diffusion de documents scientifiques de niveau recherche, publiés ou non, émanant des établissements d'enseignement et de recherche français ou étrangers, des laboratoires publics ou privés.



PPILOW

Poultry welfare in low-input outdoor production systems: the PPILOW project

Chairman : Anne Collin



INRAE



07-11 AUGUST 2022
PARIS, FRANCE | PALAIS DES CONGRÈS
IN-PERSON & ONLINE





PPILOW

H2020 Project 2019-2024



Coordination: **INRAE**

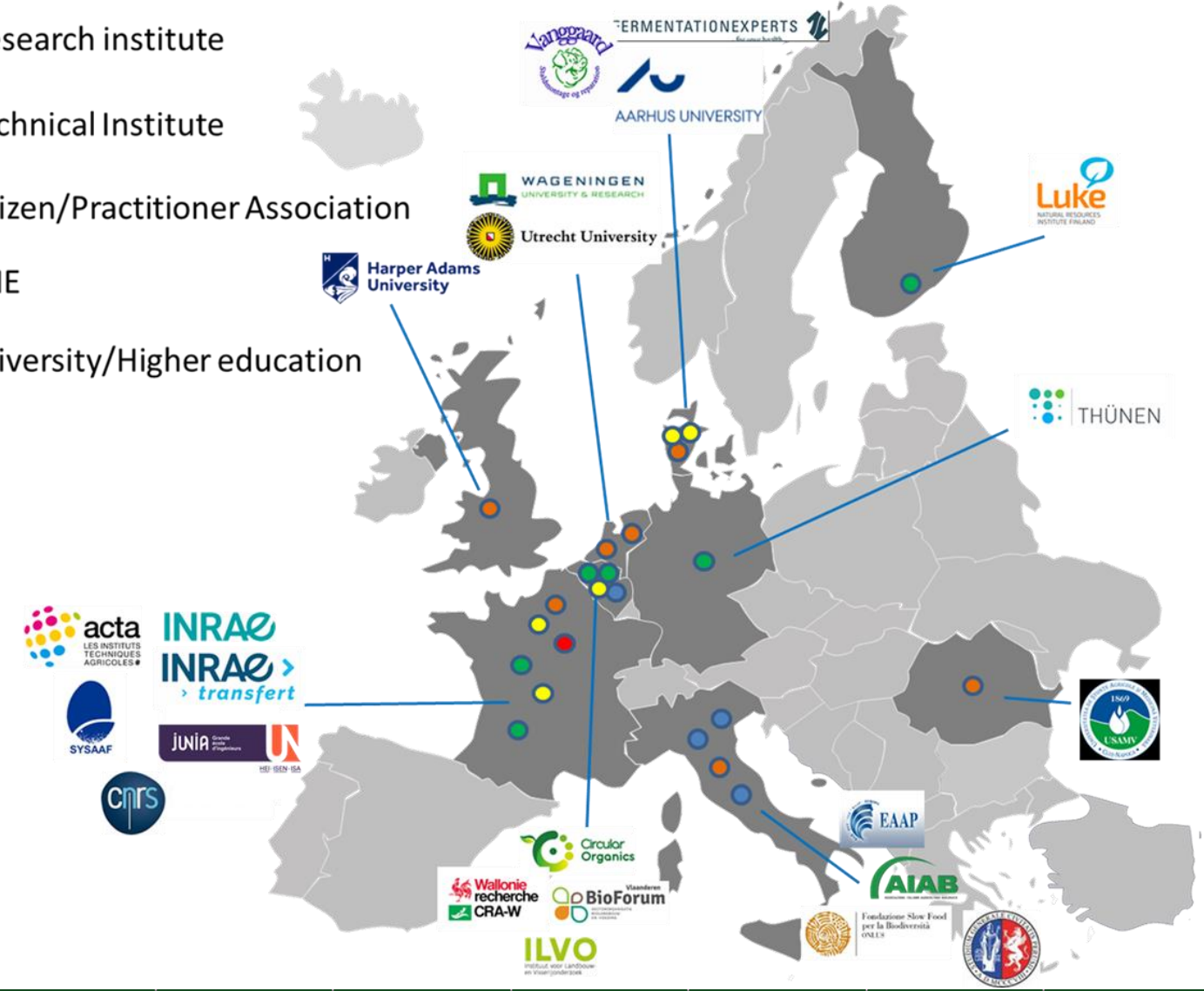
23 PPILOW Partners in 9 countries

9 National Practitioner Groups (NPG)

www.ppilow.eu

A multiactor approach for improving animal welfare in poultry and pig low input outdoor and organic production systems

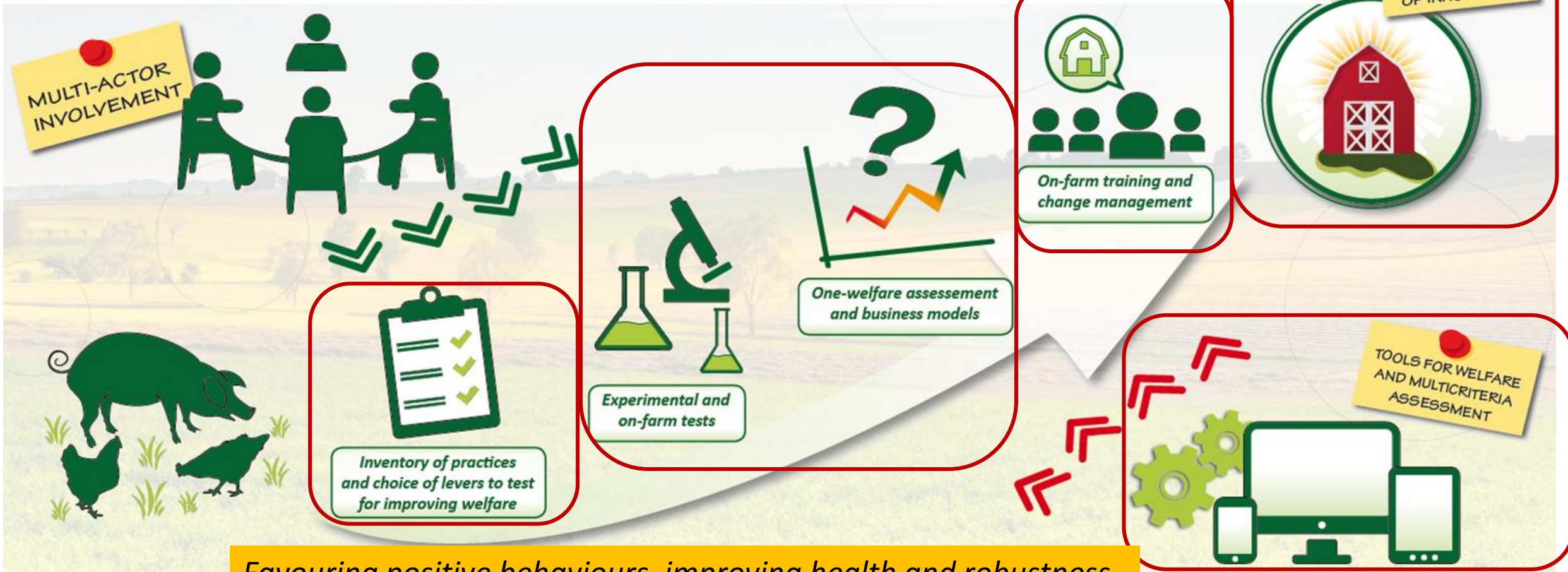
- Research institute
- Technical Institute
- Citizen/Practitioner Association
- SME
- University/Higher education



This project has received funding from the European Union's Horizon 2020 research and innovation programme under grant agreement No 816172



Innovative breeding and rearing strategies



Favouring positive behaviours, improving health and robustness

Avoiding piglet castration, beak trimming, the elimination of layer male chicks

- **Perception and expectations of practitioners and citizens towards welfare in poultry low input outdoor and organic production systems** (Katriina Heinola et al.)
- **Opinions of organic and free-range broiler farmers on animal welfare and the EBENE® app for animal welfare self-assessments** (Evelien Graat et al.)
- **Conversion efficiency of the main bioactive compounds (PUFA, tocots, carotenoids) in different commercial slow growing chicken genotypes extensively reared** (Simona Mattioli et al.)
- **Motivation for foraging behavior and feed place preference in free-range broiler chickens** (Vitor Bessa Ferreira et al.)
- **Reducing the risk of feather pecking through light during incubation and live insect feeding during the rearing period of organic laying hens** (Saskia Kliphuis et al.)
- **On the road to dual purpose chickens for Europe - experiences from pullet rearing in Denmark and Germany** (Helen Pluschke et al.)

PPILOW Partners



www.ppilow.eu



07-11 AUGUST 2022
PARIS, FRANCE | PALAIS DES CONGRÈS
IN-PERSON & ONLINE