



HAL
open science

Assessment of contextualized phosphorus recycling and its criticality

Perlette Totoson, Marilys Pradel, Pierre Thiriet, Lynda L. Aissani

► To cite this version:

Perlette Totoson, Marilys Pradel, Pierre Thiriet, Lynda L. Aissani. Assessment of contextualized phosphorus recycling and its criticality. First IRTC Conference - Raw Materials for a Sustainable Future, Feb 2023, Lille, France. hal-04154280

HAL Id: hal-04154280

<https://hal.inrae.fr/hal-04154280v1>

Submitted on 6 Jul 2023

HAL is a multi-disciplinary open access archive for the deposit and dissemination of scientific research documents, whether they are published or not. The documents may come from teaching and research institutions in France or abroad, or from public or private research centers.

L'archive ouverte pluridisciplinaire **HAL**, est destinée au dépôt et à la diffusion de documents scientifiques de niveau recherche, publiés ou non, émanant des établissements d'enseignement et de recherche français ou étrangers, des laboratoires publics ou privés.

Assessment of contextualized phosphorus recycling and its criticality

Perlette TOTOSON¹, Marilys PRADEL¹, Pierre THIRIET², Lynda AISSANI²,
¹ Université Clermont Auvergne, INRAE Clermont-Ferrand-Auvergne-Rhône-Alpes, UR TSCF, France
² INRAE Centre Bretagne-Normandie, UR OPAAL, France

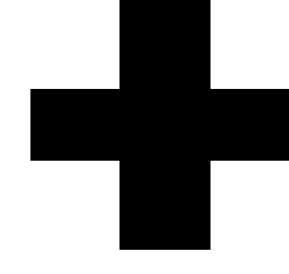
Why phosphorus recycling?

Phosphorus (P) is an **essential element for crop nutrition**. It plays a crucial role in global food security.



Phosphate rock: main source of phosphorus

- ▶ Critical raw material for European Union's (EU) economy
- ▶ Non renewable and exhaustible resource
- ▶ Long time scale for the exploration of new deposits
- ▶ Uneven distribution of global reserves



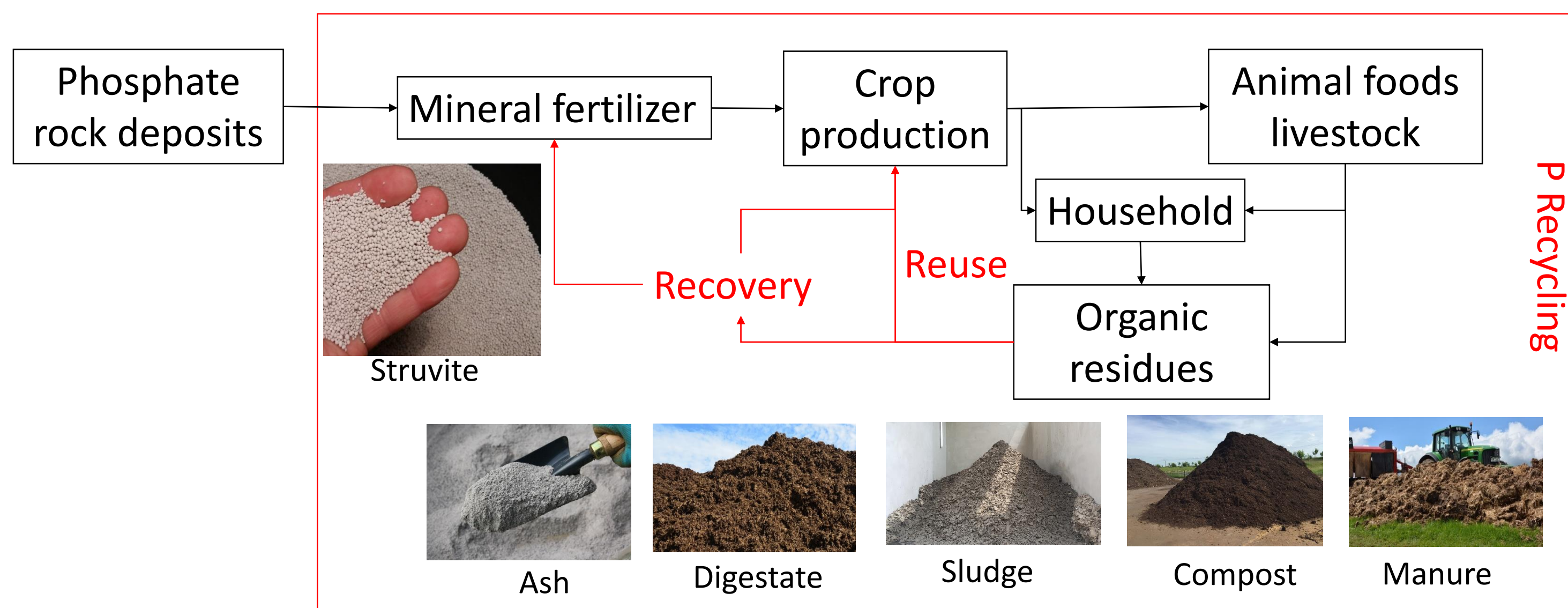
- ▶ Mostly used for phosphate mineral fertilizer manufacturing (86% in EU)
- ▶ P as element cannot be substituted in crop fertilizing
- ▶ Finland is the only European country producer of phosphate rock (16% of EU supplier)
- ▶ High EU dependency on third party countries



➔ In the agricultural sector, providing **P from recycling sources** is currently the only way to **mitigate phosphate rock criticality**

Main issues for phosphorus recycling

Phosphorus recycling refers to the **reuse** in agriculture of collected (i.e. organic effluent) or **recovered** phosphorus (i.e. struvite) which is contained in organic residues (OR) as digestate, manure, sludge...



- ▶ P content varies according to OR types, treatment processes
 - ▶ OR diversity is a function of the economic activities present at the spatial scale
 - ▶ OR reuse in agriculture is presided over by regulations
 - ▶ Farmers may not use P recycled depending the characteristics of OR (price, agronomic value, location,...)
- ⇒ P recycling depends on the **geographical scale studied** and its **context** (regulatory, social, economic, agronomic,...).

The context and geographical scale are not taken into account in the evaluation of the recycling rate indicators used in the raw material criticality assessment (as EOL-RR, EOL-RIR,...)

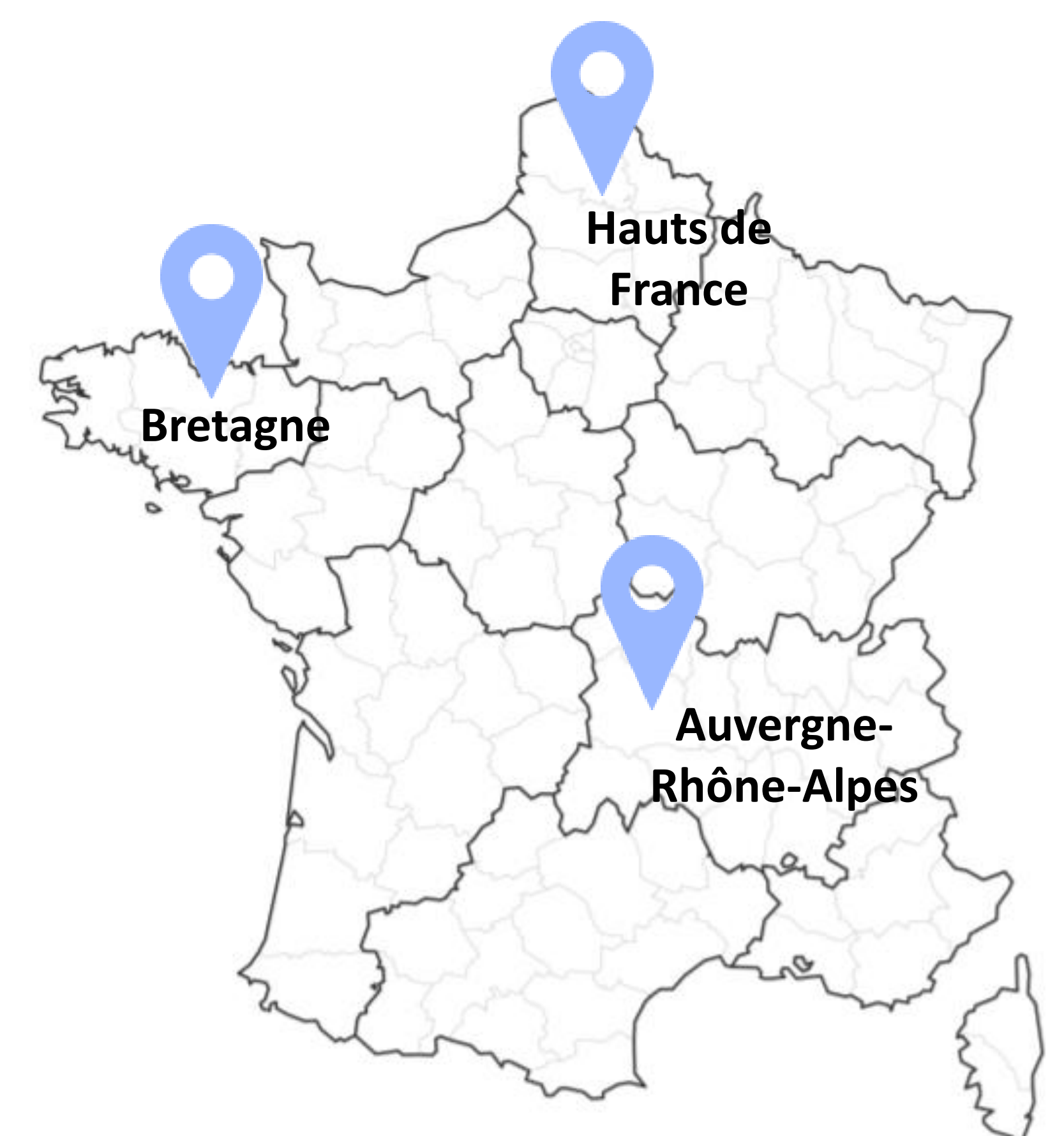
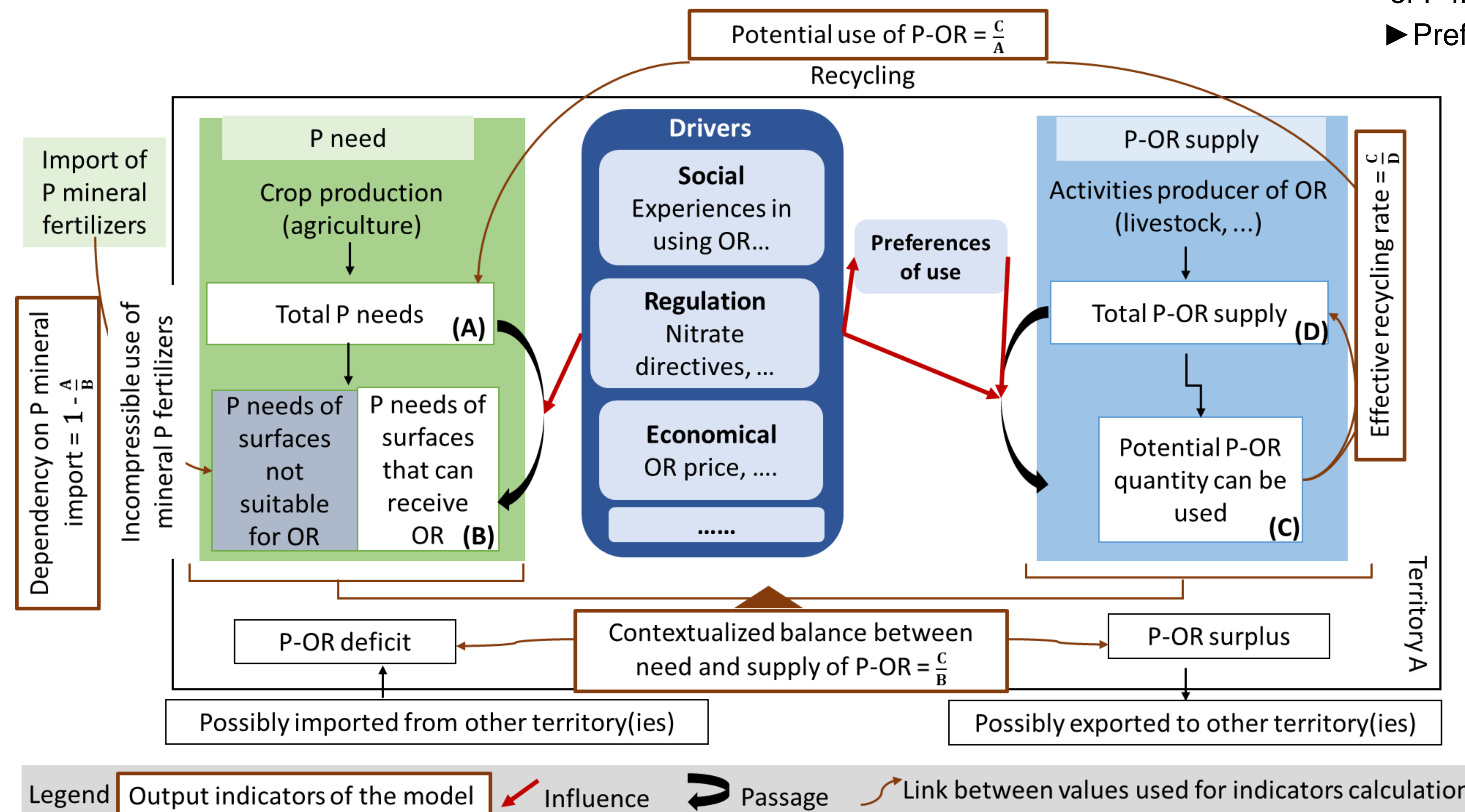
➔ There is a need to **contextualize P recycling at the local scale**

Conceptual model for contextualized phosphorus recycling

The conceptual model aims to put P recycling back into its context to assess the **maximum recoverable and recyclable potential** of phosphorus from organic residues deposits in the studied territory.

To build the model, four set of parameters are identified

- ▶ P-OR supply
- ▶ P needs
- ▶ Drivers, i.e. any factors that can influence the use of P from OR by farmers
- ▶ Preferences of use by farmers



Studied territories in France

Conclusion

The proposed model will help to provide **an effective recycling rate consistent with local context** (fertilizer regulation, water framework directive, farmers preferences, agronomy context...). This promotes a **better integration of the characteristics of phosphorus recycling into criticality assessment**.