



**HAL**  
open science

## Characterization of proteolytic enzyme secreted by *Streptomyces cinereoruber* ssp. *cinereoruber* isolated from human pleural fluid

Habiba Zerizer, Fateh Merouane, Chahrazad Bougherara, Mohammed Gagaoua, Kahina Hafid, Faiza Boughachiche, Didier Raoult, Abderrahmane Boulahrouf

### ► To cite this version:

Habiba Zerizer, Fateh Merouane, Chahrazad Bougherara, Mohammed Gagaoua, Kahina Hafid, et al.. Characterization of proteolytic enzyme secreted by *Streptomyces cinereoruber* ssp. *cinereoruber* isolated from human pleural fluid. *International Journal of Advanced Biological and Biomedical Research*, 2016, 4 (3), pp.276-286. 10.18869/IJABBR.2016.275 . hal-04156557

**HAL Id: hal-04156557**

**<https://hal.inrae.fr/hal-04156557>**

Submitted on 21 Sep 2023

**HAL** is a multi-disciplinary open access archive for the deposit and dissemination of scientific research documents, whether they are published or not. The documents may come from teaching and research institutions in France or abroad, or from public or private research centers.

L'archive ouverte pluridisciplinaire **HAL**, est destinée au dépôt et à la diffusion de documents scientifiques de niveau recherche, publiés ou non, émanant des établissements d'enseignement et de recherche français ou étrangers, des laboratoires publics ou privés.



Distributed under a Creative Commons Attribution - NonCommercial - NoDerivatives 4.0 International License

Provided for non-commercial research and education use.

Not for reproduction, distribution or commercial use.



This article was published in an CASRP journal. The attached copy is furnished to the author for non-commercial research and education use, including for instruction at the authors institution, sharing with colleagues and providing to institution administration.

Other uses, including reproduction and distribution, or selling or licensing copied, or posting to personal, institutional or third party websites are prohibited.

In most cases authors are permitted to post their version of the article (e.g. in Word or Tex form) to their personal website or institutional repository. Authors requiring further information regarding CASRP's archiving and manuscript policies encouraged to visit:

<http://www.casrp.co.uk/journals>

© 2016 CASRP Publishing Company Ltd. UK.



Available online at [www.casrp.co.uk/journals](http://www.casrp.co.uk/journals)

**CASRP PUBLISHER**

**International Journal of Advanced Biological  
and Biomedical Research 5(1) (2016) 275–285**

doi: 10.18869/IJABBR.2016.275



Original Article

Open Access

## Characterization of proteolytic enzyme secreted by *Streptomyces cinereoruber* ssp. *cinereoruber* isolated from human pleural fluid

Habiba Zerizer<sup>1,\*</sup>, Fateh Merouane<sup>1</sup>, Chahrazad Bougherara<sup>2</sup>, Mohammed Gagaoua<sup>2</sup>, Kahina Hafid<sup>2</sup>, Faiza Boughachiche<sup>1</sup>, Didier Raoult<sup>3</sup>, Abderrahmane Boulahrouf<sup>1</sup>

<sup>1</sup>Laboratoire de Génie Microbiologique et Applications, Université des frères Mentouri, Constantine, Algérie.

<sup>2</sup>Laboratoire Bioqual, Institut de la Nutrition, de l'Alimentation et des Technologies Agro-Alimentaires, Université des frères Mentouri, Constantine, Algérie.

<sup>3</sup>Unité des Rickettsies, Faculté de Médecine, Université de la Méditerranée, Marseille, France.

### Abstract

Actinomycetes are an uncommon agent of human infections and its pathogenic factors are not known. The present study reports a rare case isolation of an actinomycete from a woman pleural fluid; the strain was identified by 16S rRNA gene sequence analysis. This strain was tested to produce an extracellular protease that hydrolysis gelatin, casein and hemoglobin on agar mediums. The purification of the enzyme was carried by ammonium sulfate precipitation, gel filtration and ion exchange chromatographies. The activity of protease was studied at different pH values and temperatures and in the presence of metallic ions and inhibitors. The molecular weight of the enzyme was determined by 12% Tricine SDS-polyacrylamide gel electrophoresis. The strain was identified as *Streptomyces cinereoruber* ssp. *cinereoruber*. Extracellular proteolytic enzyme was purified at 19.67 fold and a 3.0% recovery. The enzyme was characterized as having optimal activities at pH 11.0 and 50°C, it keeps more than 50% of activity at pH between 4.0 to 12.0 and it is thermostable at 30 and 40°C. Enzymatic activity is enhanced in the presence of metal ions and inhibited by EDTA and 1,10-phenanthroline. The molecular weight was 53 kDa. This study reports the first case isolation of *Streptomyces cinereoruber* ssp. *cinereoruber* from pleural fluid, the extracellular zinc-metalloprotease was proposed as candidate virulence factor.

© 2016 Published by CASRP publishing company Ltd. UK. Selection and/or peer-review under responsibility of Center of Advanced Scientific Research and Publications Ltd. UK.

**Keywords:** Pleural fluid, *Streptomyces cinereoruber* ssp. *cinereoruber*, Zinc-metalloprotease.

\*Corresponding author: Laboratoire de Génie Microbiologique et Applications, Université des frères Mentouri, Constantine, Algérie.

© 2016 The Authors. This is an open access article under the terms of the Creative Commons Attribution-Non Commercial- No Derives License, which permits use and distribution in any medium, provided the original work is properly cited, the use is non-commercial and no modifications or adaptations are made.

Received 19 November 2016

Accepted 18 December 2016

Available online 25 December 2016

iThenticate screening 22 November 2016

English editing 15 December 2016

Quality control 21 December 2016

## 1. Introduction

Actinomycetes, Gram positive filamentous bacteria, are widely distributed in nature and can be found in almost all environments. Among such bacteria *Streptomyces* sp. are dominant and mainly known as important industrial microorganisms because of their capacity to produce numerous bioactive molecules, particularly antibiotics and enzymes. Previously, members of the genus *Streptomyces*, and, apart from mycetoma, were not known as a direct cause of infection, but with the increase of immunosuppression, many cases of invasive infections are described (Martin et al., 1999; Riviere et al., 2012; Pellegrini et al., 2012). Proteases constitute one of the most important groups of hydrolytic enzymes. They were previously considered enzymes that only catalyze protein degradation by hydrolysis of peptide bonds. Nowadays, proteases are recognized as exceptionally important molecules that are engaged in numerous vital life processes. Because certain states of protease activity can lead to signal specific diseases (Lee and Kim, 2012). Many proteases produced by pathogenic microorganisms have been studied and the findings demonstrated or suggested that they play crucial roles in a number of pathological processes. For example, they are involved in host-tissue degradation to facilitate the colonization and infection, can influence the immune system and can even act as toxins (Armstrong, 2006; Lee and Kim, 2012). They can, also, be used as biomarkers and/or prognostic markers (Lee and Kim, 2012). This paper reports identification of *Streptomyces* strain isolated from a pleural fluid specimen of patient with persistent pleural effusion. After determination of gelatinolytic, caseinolytic and hemolytic activities the purification and characterization of extracellular proteolytic enzyme was made and proposed as pathogenic factor.

## 2. Materials and methods

### 2.1. Strain isolation and maintenance

Pleural fluid specimen was collected from a 40-year-old woman hospitalized in infectious diseases services of Constantine University Hospital Center, East of Algeria. The patient presented pneumonia with persistent pleural effusion and had a history of tuberculosis. Microscopic observation of the pleural fluid specimen revealed branching filaments with Gram positive stain. Pure culture of actinomycetes colonies was obtained on Bennett's Agar slants. Spores were stored at -20°C in 20 % glycerol until characterization.

### 2.2. Molecular identification

DNA was extracted using MagNApure LC DNA isolation Kit III (PG 0212). The DNA extract was amplified with universal primers, fD1:5' AGA GTT TGA TCC TGG CTC AG 3' and rP2:5' ACG GCT ACC TTG TTA CGA CTT 3' (Eurogentec, Seraing, Belgium). The full length of 16S rRNA gene was sequenced by oligonucleotides primers: 536f: 5'CAG-CAG-CCG-CGG-TAA-TAC3', 536r: 5'GTA-TTA-CCG-CGG-CTG-CTG3', 800f: 5'ATT-AGA-TAC-CCT-GGT-AG3', 880r: 5'CTA-CCA-GGG-TAT-CTA-AT3', 1050f: 5'TGT-CGT-CAF-CTC-GTG3', 1050r: 5'CAC-GAG-CTG-ACG-ACA3'. The reaction mixture for 16S rRNA gene sequencing contains 1.5 µl BDV1 buffer, 1 µl Big Dey Terminator (version 1.1 cycle sequencing kits), 0.5 µl primers, 3 µl purified water and 4 µl DNA. The PCR program was as follows: An initial denaturation (96°C for 1 min) followed by 25 cycles of denaturation (96°C for 10 s), annealing (50°C for 5 s) and extension (60°C for 3 min). Partial fragments of 16S rRNA gene sequences were combined in a complete sequence using Sequencher program (Version 4.5). Complete sequences were compared with all bacterial 16S rRNA gene sequences available in the GenBank database, using multisequences comparison program BLAST. Multiple alignments of sequences and calculation of sequence similarity levels were carried out using Clustal W (Thompson et al., 1994). Neighbour-joining tree (Saitou and Nei, 1987) is constructed using MEGA version 4.0.2. The reliability of the tree topology was evaluated by bootstrap analysis of Felsenstein (1985) with 1000 resembling.

### 2.3. Nucleotide sequence accession number

16S rRNA gene sequence derived from this study is submitted to the GenBank database under accession number KF991645.

### 2.4. Determination of proteolytic activities

Gelatinolytic activity was tested on medium containing: gelatin, 10.0; peptone, 5.0; yeast extract, 5.0; NaCl, 5.0; agar, 15.0; pH 7.0. Caseinolytic activity was determined using skim milk agar plates containing: 5 g of non-fat

dry milk and 0.5 g agar in 50 ml distilled water. Hemolytic activity was observed on TSA supplemented with 5 % (v/v) of sheep blood. The strain was punctually inoculated on the mediums and incubated at 30°C for 7 days. The medium with gelatin was flooded with mercuric chloride solution (HgCl<sub>2</sub>, 15.0 g; HCl, 20 ml; H<sub>2</sub>O, 80 ml). Zones of clearance around the colonies indicated proteolytic activity.

### 2.5. Protease production

A 1 ml spore suspension (10<sup>4</sup> to 10<sup>6</sup> spores / mL) was added into a 250 mL Erlenmeyer flask containing 50 mL of gelatin broth, and the flasks were incubated at 30°C and 150 rpm for 96 h. The culture medium was centrifuged at 5000 rpm to remove mycelia, the supernatant was filtered through 0.45 µm membranes and used as a crude enzyme preparation.

### 2.6. Protease assay

Protease activity was determined according to Tsuchida et al. (1986) using casein as substrate. The reaction mixture, contained 250 µl enzyme solution and 250 µl of 2 % casein in phosphate buffer pH 7.0, was incubated at 40°C for 30 min. The reaction was terminated by adding an equal volume of 10 % trichloroacetic acid and the reaction mixture was then allowed to stand in ice for 15 min to precipitate the insoluble proteins. The supernatant was separated by centrifugation at 5000 rpm for 10 min at 4°C and the acid soluble product in the supernatant was neutralized with 0.4 M Na<sub>2</sub>CO<sub>3</sub> solution. The color developed after adding of 10 % Folin Ciocalteu reagent was measured at 750 nm. The enzyme activity was calculated from the standard curve of L-tyrosine. Protease unit was defined as the amount of enzyme that released 1µg of tyrosine per ml per min under assay condition.

### 2.7. Protease purification

Ammonium sulfate was added to the crude enzyme preparation to 80 % final saturation and the mixture was incubated overnight at 4°C. The precipitated protein was obtained by centrifugation for 30 min at 10000 rpm at 4°C, was re-suspended in a 6 ml of 0.2 M phosphate buffer pH 7.0 and then subjected to a process of dialysis against the same buffer. The concentrated enzyme fraction, with ammonium sulfate saturation, was purified applying a Sephadex G-75 column (60 x 1cm). The column was first equilibrated with 0.1 M phosphate buffer (pH 7.0) then the concentrated enzyme sample was loaded and eluted with the same buffer at a flow rate of 30 ml/h. The collected 2 ml fractions were analyzed for protease activity and the positively active ones were pooled. The gel filtrated enzyme sample was subjected to an ion-exchange chromatography applying diethylaminoethyl (DEAE) Sephadex column (10 x 1cm) that was equilibrated with 0.1 M phosphate buffer (pH 8.0). The column was washed with the same buffer and eluted with a linear gradient of 0 to 1.5 M NaCl in 50 mM sodium phosphate buffer (pH 8.0). The fractions with protease activity were collected and pooled.

### 2.8. Protein quantification

The amount of protein was determined by the method of Lowry (1951) using bovine serum albumin (BSA) (0-0.1 mg/ml) as the standard. In addition, during the enzyme purification by column chromatographies, the protein elution profile was monitored spectrometrically at 280 nm.

### 2.9. Protease characterization

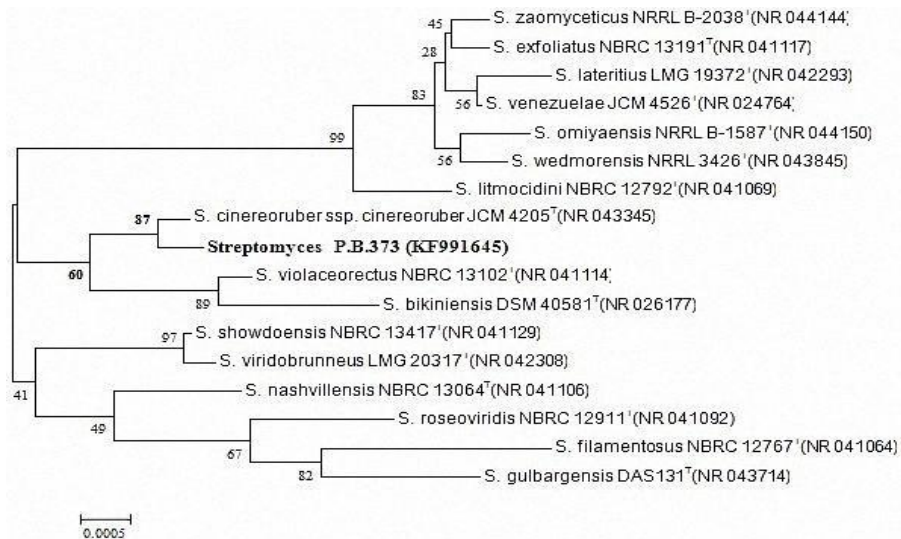
The activity of the protease was determined at different pH values in buffers: citrate-phosphate 0.2 M (pH 4.0–6.0), sodium phosphate 0.2 M (pH 7.0-8.0), glycine-NaOH buffer (pH 9.0-10.0) and phosphate-NaOH (pH 11.0-12.0). The pH stability of the protease was determined by incubating the enzyme in the above mentioned buffers for 1 h at 40°C. Likewise, the activity of the enzyme was determined by incubating the reaction mixture at different temperatures ranging from 30 to 80°C and the enzyme activity was measured. To determine the thermal stability, the enzyme was incubated at different temperatures (30 to 80°C) for 1 h and then relative activities were calculated. The effect of different metal ions (CaCl<sub>2</sub>, CoCl<sub>2</sub>, CuCl<sub>2</sub>, FeCl<sub>2</sub>, KCl, NaCl, MgCl<sub>2</sub>, MnCl<sub>2</sub>, and ZnCl<sub>2</sub>) and inhibitors, EDTA and 1,10-phenanthroline, on enzyme activity was checked by incubating the enzyme with 1 and 10 mM (final concentration) for 1 hour at 50°C. The relative activities were estimated with reference to control without any additive. Molecular weight of the purified protease was estimated by the method of Gagaoua et al. (2014) with Tricine SDS-polyacrylamide gel electrophoresis, using 12 % separating and 4 % stacking gels. The samples were mixed (v/v) with the sample buffer containing 100 mM Tris-HCl (pH 6.8), 1 % (w/v) SDS, 0.75 % (w/v) DTT, 0.02 % (w/v) Coomassie Brilliant Blue R250 and 20 % (w/v) glycerol and heated for 10 min in a bath water at

75 °C. A mixture of protein molecular weight contained:  $\beta$ -Lactoglobuline (18.4 kDa), Actine (42 kDa), Glutamic deshydrogenase (53 kDa), Transferrine (76 kDa) and  $\beta$ -Galactosidase B (116 kDa) are using as markers. After separation, the gel was stained with 4.9 mM Coomassie Brilliant Blue R-250 in 50 % (v/v) ethanol, and 7.5 % (v/v) acetic acid. Protein patterns were then visualized after destaining the gel until a clear background was achieved.

### 3. Results

#### 3.1. Isolation and identification

An actinomycetes strain P.B.373 was isolated from a pleural fluid specimen with gray dry and powdery colonies. Microscopic observation revealed Gram positive, non fragmented mycelium and long (up to 50) straight spore chains. Comparative analysis of an almost complete 16S rRNA gene nucleotide sequence (1459 pb) obtained from the isolate, with the corresponding sequences obtained from the Gen Bank/ EMBL/ DDBJ databases, assigned the strain P.B.373 to the genus *Streptomyces* and found the most closely related species with a high degree of relatedness (up to 99 % of sequences similarity). The 16S rRNA gene sequence of the strain showed levels of similarity of 99.85 % to that of *Streptomyces cinereoruber* ssp. *cinereoruber* JCM 4205<sup>T</sup> and 99.45 % to that of *Streptomyces violaceorectus* NBRC 13102<sup>T</sup>. The phylogenetic tree shows the close association of strain P.B.373 with *Streptomyces* species and formed a monophyletic clade with *S. cinereoruber* ssp. *cinereoruber* with 87 % bootstrap support (Fig. 1).



**Fig. 1.** Phylogenetic tree constructed by the neighbor-joining method, based on almost complete 16S rRNA gene. Sequence, showing the position of strain *Streptomyces* P.B.373 and the nearest related taxa. Numbers at nodes indicate percentages of 1000 bootstrap resamplings. Bar 0.0005 substitutions per nucleotide position.

#### 3.2. Purification of proteolytic enzyme

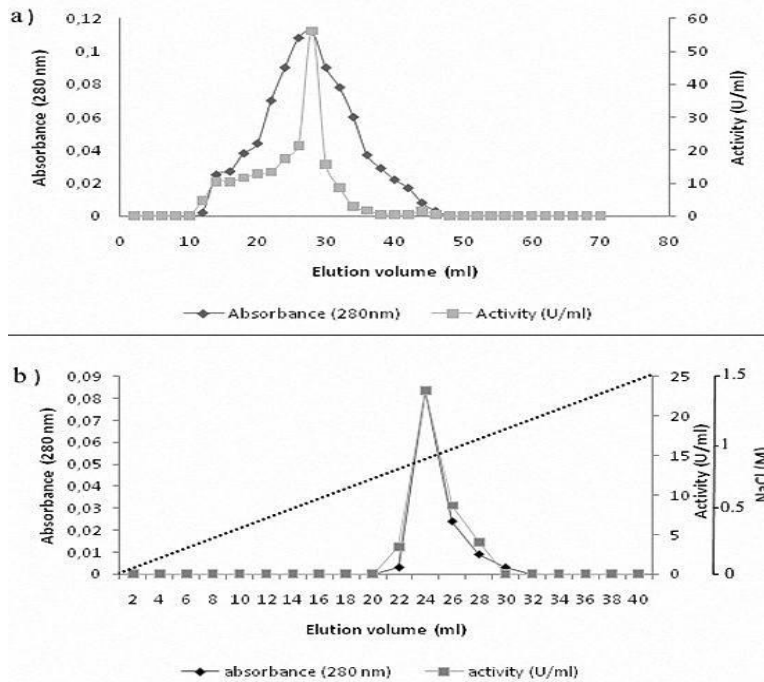
Purification of proteolytic enzyme was carried out in three successive steps as shown in Table 1. The crude extract contained 326.9 mg protein; maximum activity was obtained by precipitation of 80 % saturation of ammonium sulfate. The major fraction with proteolytic activity was applied to the Sephadex G-75 column, which generated one single peak showing proteolytic activity in the eluate (Fig. 2a). The major active fraction was pooled, concentrated, and further purified using gel filtration via a DEAE Sephadex column, and one peak with specific activity was acquired (Fig. 2b). Overall, 19.67 fold purification and recovery of 3 % activity (yield) were obtained after completion of the purification steps. The specific activity of the final enzyme preparation was 788.4 U/mg protein.

**Table 1**

Purification steps of the proteolytic enzyme.

Purification step	Total protein (mg) <sup>a</sup>	Total activity (Units) <sup>b</sup>	Specific activity (Units/mg protein)	Recovery (%)	Fold purification
Culture supernatant	326.9	13101.45	40.07	100	1
80 % (NH <sub>4</sub> ) <sub>2</sub> SO <sub>4</sub>	44.42	2880.00	64.83	21.98	1.61
Sephadex G-75	9.39	2817.39	300.04	21.50	7.48
DEAE Sephadex	0.5	394.2	788.4	3.00	19.67

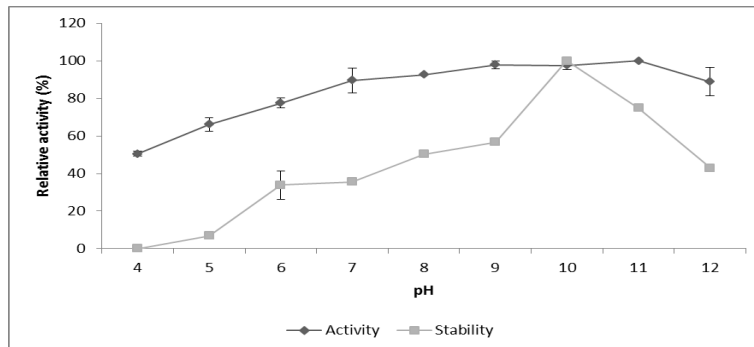
<sup>a</sup>Protein was measured by the method of Lowry et al. (1951), <sup>b</sup>Activity was measured by the method of Tsuchida et al. (1986).



**Fig. 2.** Purification chromatograms of the proteolytic enzyme. (a: Gel filtration chromatography, b: Ion-exchange chromatography)

### 3.3. Effect of pH

The enzyme was active in a wide range of pH. At pH 7.0, 8.0, 9.0 and 10.0, the enzyme has the best activities (89.47, 92.64, 97.77 and 97.44 %), respectively, whereas at pH 12.0 the activity was slightly decreased by nearly 10 %. Optimum activity was shown at pH 11.0. The enzyme keeps more than 50 % of activity at pH between 4 to 12 (Fig. 3).



**Fig. 3.** Effect of pH on activity of the proteolytic enzyme.

### 3.4. Effect of temperature

The activity of proteolytic enzyme is more than 50 % between 40 and 60°C, optimum temperature was recorded at 50°C. The activity gradually declined at temperatures beyond 50°C (Fig. 4). The enzyme was stable at 30 and 40°C. Up to 40°C the stability decreases continuously.

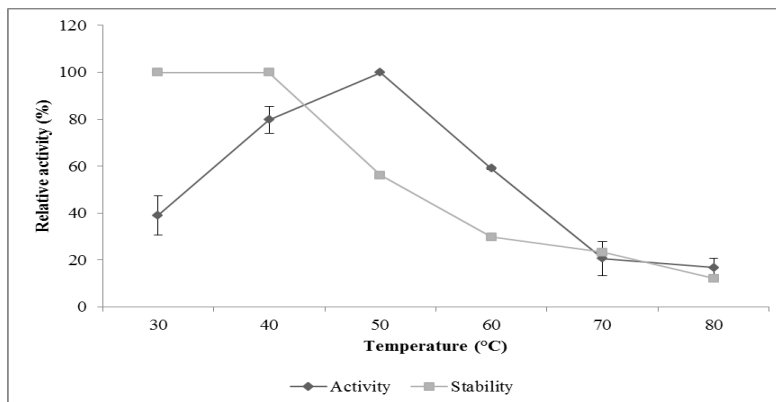


Fig. 4. Effect of temperature on activity of the proteolytic enzyme.

### 3.5. Effects of metals and inhibitors

The effects of various metal ions and inhibitors, at concentrations of 1 and 10 mM, on the activity of the enzyme were analyzed (Table 2). It was observed that the enzyme recovered activities by incubation with the majority of metal ions tested. These results indicate that the metal ions are located at or near the active site of the enzyme and are necessary for catalytic activity. Moreover, the enzyme was inhibited by chelators of divalent cations, EDTA and 1,10-phenanthroline, thus confirming the finding that the proteolytic enzyme of *Streptomyces* P.B.373 belonging to metalloprotease. Since 1,10-phenanthroline specially chelates  $Zn^{+2}$ , allows to suggest that the enzyme is a zinc-binding domain of metalloprotease.

Table 2. Effect of different metal ions and inhibitors on the activity of the proteolytic enzyme.

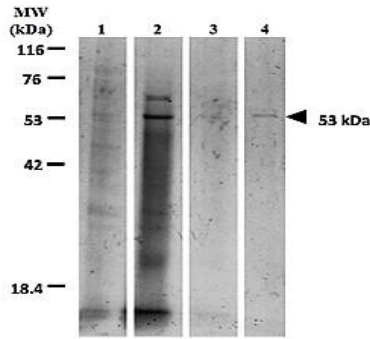
Agents	Relative activity (%)	
	1 mM	10 mM
none	100	100
CaCl <sub>2</sub>	116.48 ± 6.56	107.02 ± 10.10
CoCl <sub>2</sub>	98.45 ± 1.48	102.53 ± 9.58
CuCl <sub>2</sub>	75.83 ± 3.76	114.07 ± 11.06
FeCl <sub>2</sub>	107.29 ± 1.35	90.37 ± 3.55
KCl	110.06 ± 4.73	90.37 ± 0.48
MgCl <sub>2</sub>	113.40 ± 5.83	103.96 ± 9.58
MnCl <sub>2</sub>	109.17 ± 3.06	177.92 ± 5.05
NaCl	79.16 ± 1.28	78.59 ± 6.06
ZnCl <sub>2</sub>	139.86 ± 1.47	105.0 ± 2.05
EDTA	85.185 ± 0.26	56.29 ± 3.84
1,10-phenanthroline	94.14 ± 5.72	72.66 ± 0.88

EDTA: ethylene diamine tetra acetic acid

### 3.6. Molecular weight

Tricine SDS-polyacrylamide gel electrophoresis of the purified enzyme was performed to verify enzyme purity and determine the molecular weight. The protein migrated as a single band and the molecular mass was estimated to be 53 kDa corresponding to glutamic deshydrogenase marker protein (Fig. 5).





**Fig. 5.** Tricine SDS gel electrophoresis for molecular weight determination of the proteolytic enzyme. (Lane1: culture supernatant, lane 2: ammonium sulfate precipitation, lane 3: gel filtration chromatography, lane 4: ion-exchange chromatography)

#### 4. Discussion

The *Streptomyces* sp. are widely distributed in natural habitats and are well known for their biologically active metabolites. In clinical practice these organisms are not considered to be a major pathogen and its virulence is thought to be low; however, it has been isolated from various clinical sources and causes many unusual infections in human and animals (McNeil and Brown, 1994). Clinical isolates of *Streptomyces* species from human are in majority cases of mycetoma and identified as *S. somaliensis* and *S. griseus* (McNeil and Brown, 1994; Dunne et al., 1998; Martin et al., 1999; Rose III et al., 2008; Pellegrini et al., 2012). However, pulmonary invasive *Streptomyces* infections have seldom been reported, isolates were identified as *S. griseus*, *S. pelletieri*, *S. maritimus*, *S. olivaceus* and *S. albus* (Gugnani et al., 1993; Kapadia et al., 2007). To the best of our knowledge, it is the second case that indicates the occurrence of *Streptomyces cinereoruber* from clinical specimen; the first one was from sputum samples and was considered as an unusual case of lung infection (Manteca et al., 2008).

*Streptomyces* sp. produces many extracellular enzymes to assure their diverse physiological demands and could provide them a mechanism to survive under different environmental conditions. For example *S. griseus* excretes a metalloprotease, SgmA, required for degradation of substrate mycelia during morphological differentiation (Kato et al., 2002). Trypsin-like protease was essential for the degradation of mycelial protein in *S. exfoliatus* (Kang et al., 1995). Moreover, proteases are essential virulence factors during all stages of the infectious process. One important function is in adherence, invasion and dissemination of the parasite, by direct host tissue destruction or fibrinolysis, proteolytic destruction of defense mediators, activation of host proteins zymogens or proteolytic activation of microbial toxins (Armstrong, 2006). During pulmonary invasion, proteases contribute as well as to delay mucociliary clearance and epithelial injury (Amitani et al., 1995). The strain *Streptomyces* P.B.373 isolated from pleural fluid specimen produces extracellular protease that hydrolyses gelatin, casein and hemoglobin. Enzyme characterization suggests that is neutral to alkaline zinc-metalloprotease.

Zinc-metalloprotease was studied as an important virulence factor in a number of diverse human pathogenic bacteria. It has been reported that *Bacillus anthracis* zinc-metalloprotease breaks down fibronectin, laminin and collagen; *Pseudomonas aeruginosa* zinc-metalloprotease cleave fibrinogen elastin, laminin,  $\alpha$ 1-proteinase inhibitors, coagulation factors XII, IgA and IgG (Barrett et al., 2004; Chung et al., 2006); *Proteus mirabilis* produce zinc-metalloprotease that cleave IgA and IgG (Wassif et al., 1995); *Staphylococcus epidermidis* zinc-metalloproteases degrades elastin, collagen, IgG and serum  $\alpha$  I-protease inhibitor (Teufel and Gotz, 1993); *Streptococcus pneumoniae* extracellular zinc-metalloprotease removes the membrane from the epithelial glycocalyx (Govindarajan et al., 2012); *Vibrio cholera* zinc-metalloprotease degrades the extracellular matrix components fibronectin, fibrinogen and plasminogen (Vaitkevicius et al., 2008; Edwin et al., 2014). Extracellular zinc-metalloprotease is, also, characterized as toxin during *Bacteroides fragilis*, *Ralstonia picketti* and *Serratia marcescens* virulence (Marty et al., 2002; Wu et al., 2002; Chen et al., 2015), and is required for maturation of the pathogenic factor, phospholipase C (lecithinase), in *Listeria monocytogenes* (Coffey et al., 2000). Consequently, we do not exclude the possibility that proteolytic enzyme from *Streptomyces* P.B.373 is a pathogenic determinant.

In broad cases, *Streptomyces* species produces proteases at optimum 8.0 or 9.0 (Sampath et al., 1997; Chitte and Dey, 2000; Moreira et al., 2001; Ramesh et al., 2009). Whereas, optimum at pH 11.0 was also observed (El-

Shanshoury et al., 1995; Hui et al., 2004). Extracellular proteases from actinomycetes generally have high optimal temperature of 40°C or above (Kang et al., 1995; Sampath et al., 1997; Chitte and Dey, 2000; Hui et al., 2004; Ramesh et al., 2009). Earlier, an extracellular alkaline protease from *Streptomyces clavuligerus*, *Streptomyces pseudogrisiolus* and *Streptomyces* sp. P3, has shown the same optimal temperature of our study (Moreira et al., 2001; Awad et al., 2013; Cheng et al., 2015), as well fibrinolytic protease from *Streptomyces* sp. (Simkhada et al., 2012; Cheng et al., 2015). Characteristics of zinc-metalloproteases from some human pathogenic bacteria are summarized in table 3. In broad cases metalloproteases virulence factors exhibit an optimum activity at neutral pH. In the present study, it is advisable to note that metalloprotease from *Streptomyces* P.B.373 provide 89.47 % of activity at pH 7.0. Stability at 30 and 40°C accord virulence factors metalloproteases from *Pseudomonas aeruginosa* and *Ralstonia pickettii*.

The molecular mass of the reported *Streptomyces* metalloprotease enzymes is in the range of 20 - 66 kDa (Mitra and Chakrabarty, 2005; Awad et al., 2013), which enclosed our result. Furthermore, the molecular mass of the purified enzyme from *Streptomyces* P.B.373 was closer as that for the metalloprotease virulence factor for *Proteus mirabilis* (55 kDa), *Ralstonia pickettii* (55 kDa), *Serratia marcescens* (56 kDa) and *Streptococcus pneumoniae* (50 kDa). This study is the first case isolation of *Streptomyces cinereoruber* ssp. *cinereoruber* from pleural fluid. Production of zinc-metalloprotease is proposed as candidate virulence factor.

**Table 3**

Characteristics of virulence factor metalloprotease from some human pathogenic bacteria.

Pathogenic bacteria	Characteristics*			Role in pathogenicity	References
	Molecular weight (kDa)	Optimum pH and/ or stability	Optimal temperature and/or stability		
Bacillus anthracis	18, 36, 46	7.0 to 8.0 <sup>a</sup>	37 <sup>a</sup> , 50 <sup>b</sup>	Cleave tissue components	Chung et al. (2006)
Bacteroides fragilis	20	ND	ND	Cytotoxic effect	Wu et al. (2002)
Listeria monocytogenes	35	7.0 <sup>a</sup>	80 <sup>a</sup>	Invasiveness	Coffey et al. (2000)
Proteus mirabilis	55	ND	ND	Destruction of defense mediators	Wassif et al. (1995)
Pseudomonas aeruginosa	44.6	6.0-7.0 <sup>a</sup> , 7.0 <sup>b</sup>	37-40 <sup>a</sup> , 40 <sup>b</sup>	Colonization and invasiveness	Barrett et al. (2004)
	33	7.0-8.0 <sup>a</sup>	ND	Destruction of defense mediators	
Ralstonia pickettii	55	ND	37 <sup>b</sup>	Cytotoxic effect	Chen et al. (2015)
Serratia marcescens	56	ND	ND	Cytotoxic effect	Marty et al. (2002)
Staphylococcus aureus	38	7.0 <sup>a</sup>	ND	ND	Teufel and Gotz (1993)
Staphylococcus epidermidis	33	5.0-7.0 <sup>a</sup>	37 <sup>a</sup> , 80 <sup>b</sup>	Skin colonization	Teufel and Gotz (1993)
Streptococcus pneumoniae	50, 170, 180	ND	ND	Internalization of the bacteria	Govindarajan et al. (2012)
Vibrio cholera	35	ND	ND	Cytotoxic effect	Edwin et al. (2014)
	81 and 73	ND	ND	Cleave tissue components	Vaitkevicius et al. (2008)

\*all enzymes require zinc for activity, a: optimum, b: stability, ND: not determined.

## Acknowledgments

We are grateful to the Rickettsies Unit, Marseille, France and University Hospital Center Constantine, Algeria, staff for the contribution in the realization of this work.

## References

- Amitani, R., Taylor, G., Elezis, E.N., Llewellyn-Jones, C., Mitchell, J., Kuze, F., Cole, P.J., Wilson, R., 1995. Purification and characterization of factors produced by *Aspergillus fumigatus* which affect human ciliated respiratory epithelium. *Infect. Immun.*, 63, 3266–3271.
- Armstrong, P.B., 2006. Proteases and protease inhibitors: a balance of activities in host–pathogen interaction. *Immunobiol.*, 211, 263–281.
- Awad, H.M., Mostafa, E.E., Saad, M.M., Selim, M.H., Hassan, H.M., 2013. Partial purification and characterization of extracellular protease from halophilic and thermotolerant strain *Streptomyces pseudogrisiolus* NRC-15. *Ind. J. Biochem. Biophys.*, 50, 305-311.
- Barrett, A.J., Woessner, J.F., Rawlings, N.D., 2004. Handbook of proteolytic enzymes, Elsevier academic press, London, 402.
- Chen, C.M., Liu, J.J., Chou, C.W., Lai, C.H., Wu, L.T., 2015. RpA, an extracellular protease similar to the metalloprotease of serralyisin family, is required for pathogenicity of *Ralstonia pickettii*. *J. Appl. Microbiol.*, 119, 1101-1111.
- Cheng, G., He, L., Sun, Z., Cui, Z., Du, Y., Kong, Y., 2015. Purification and biochemical characterization of a novel fibrinolytic enzyme from *Streptomyces* sp. P3. *J. Microbiol. Biotechnol.*, 25, 1449–1459.
- Chitte, R., Dey, S., 2000. Potent fibrinolytic enzyme from a thermophilic *Streptomyces megasporus* strain SD5. *Lett. Appl. Microbiol.*, 31, 405-410.
- Chung, M.C., Popova, T.G., Millis, B.A., Mukherjee, D.V., Zhou, W., Liotta, L.A., Petricoin, E.F., Chandhoke, V., Bailey, C., Popov, S.G., 2006. Secreted neutral metalloproteases of *Bacillus anthracis* as candidate pathogenic factors. *J. Biol. Chem.*, 281, 31408–31418.
- Coffey, A., Van, Den Burg, B., Veltman, R., Abee, T., 2000. Characteristics of the biologically active 35-kDa metalloprotease virulence factor from *Listeria monocytogenes*. *J. Appl. Microbiol.*, 88, 132–141.
- Dunne, E.F., Burman, W.J., Wilson, M.L., 1998. *Streptomyces pneumonia* in patient with human immunodeficiency virus infection: Case report and review of the literature on invasive *Streptomyces* infections. *Clin. Infec. Dis.*, 27, 93–96.
- Edwin, A., Grundström, C., Wai, S.N., Öhman, A., Stier G., Sauer-Eriksson, A.E., 2014. Domain isolation, expression, purification and proteolytic activity of the metalloprotease PrtV from *Vibrio cholera*. *Prot. Expr. Purif.*, 96, 39–47.
- El-Shanshoury, A.E.R.R., El-Sayed, M.A., Sammour, R.H., El-Shouny, W.A., 1995. Purification and partial characterization of two extracellular alkaline proteases from *Streptomyces corchorusii* ST36. *Can. J. Microbiol.*, 41, 99-104.
- Felsenstein, J., 1985. Confidence limits on phylogenies: an approach using the bootstrap. *Evol.*, 39, 783-791.
- Gagaoua, M., Boucherba, N., Bouanane-Darenfed, A., Ziane, F., Nait-Rabah, S., Hafid, K., Boudechicha, H.R., 2014. Three-phase partitioning as an efficient method for the purification and recovery of ficin from mediterranean fig (*Ficus carica* L.) latex. *Separ. Purif. Technol.*, 132, 461–467.
- Govindarajan, B., Menon, B.B., Spurr-Michaud, S., Rastogi, K., Gilmore, M.S., Argüeso, P., Gipson, I.K., 2012. A metalloproteinase secreted by *Streptococcus pneumoniae* removes membrane mucin MUC16 from the epithelial glycocalyx barrier. *PLoS One*, 7, e32418.
- Gugnani, A.C., Unaogu, I.C., Emeruwa, C.N., 1993. Pulmonary infection due to *Streptomyces griseus*. *J. Commun. Dis.*, 25, 38–40.
- Hui, Z., Doi, H., Kanouchi, H., Matsuura, Y., Mohri, S., Nonomura, Y., Oka, T., 2004. Alkaline serine protease produced by *Streptomyces* sp. degrades PrP<sup>Sc</sup>. *Bioch. Bioph. Res. Commun.*, 321, 45-50.
- Kang, S.G., Kim, I.S., Rho, Y.T., Lee, K.J., 1995. Production dynamics of extracellular proteases accompanying morphological differentiation of *Streptomyces albidoflavus* SMF301. *Microbiol.*, 141, 3095-3103.
- Kapadia, M., Rolston, K., Han, X.Y., 2007. Invasive *Streptomyces* infections: six cases and literature review. *Am. J. Clin. Pathol.*, 127, 619–624.

- Kato, J.Y., Suzuki, A., Yamazaki, H., Ohnishi, Y., Horinouchi, S., 2002. Control by A-factor of a metalloendopeptidase gene involved in aerial mycelium formation in *Streptomyces griseus*. J. Bacteriol., 184, 6016-6025.
- Lee, S., Kim, K., 2012. Protease activity: meeting its theranostic potential. Theranostics, 2, 125-126.
- Lowry, O.H., Rosebrough, N.J., Farr, A.L., Randall, R.J., 1951. Protein measurement with the folin-phenol reagents. J. Biol. Chem., 193, 265-275.
- Manteca, A., Pelaeza, A.I., Garcia-Suarez, M.D.M., Hidalgo, E., Bustob, B.D., Mendez, F.J., 2008. A rare case of lung coinfection by *Streptomyces cinereoruber* and *Haemophilus influenzae* in a patient with severe chronic obstructive pulmonary disease: Characterization at species level using molecular techniques. Diag. Microbiol. Infect. Dis., 60, 307-311.
- Martin, G.J., Blazes, D.L., Mayers, D.L., Spooner, K.M., 1999. Refractory craniofacial actinomycetoma due to *Streptomyces somaliensis* that required salvage therapy with amikacin and imipenem. Clin. Infect. Dis., 29, 460-461.
- Marty, K.B., Williams, C.L., Guynn, L.J., Benedik, M.J., Blanke, S.R., 2002. Characterization of a cytotoxic factor in culture filtrates of *Serratia marcescens*. Infect. Immun., 70, 1121-1128.
- McNeil, M.M., Brown, J.M., 1994. The medically important aerobic actinomycetes: Epidemiology and microbiology. Clin. Microbiol. Rev., 7, 357-417.
- Mitra, P., Chakrabarty, P.K., 2005. An extracellular protease with depilation activity from *Streptomyces nogalator*. J. Sci. Indus. Res., 64, 978-983.
- Moreira, K.A., Cavalcanti, M.T.H., Duarte, H.S., Tambourgi, E.B., Magalhães de Melo, E.H., Silva, V.L., Porto, A.L.F., Filho, J.L.D.L., 2001. Partial characterization of proteases from *Streptomyces clavuligerus* using an inexpensive medium. Braz. J. Microbiol., 32, 215-220.
- Pellegrini, G.J., Graziano, J.C., Ragnathan, L., Bhat, M.A., Hemashettar, B.M., Brown, J.M., 2012. Scalp abscess due to *Streptomyces cacaoui* subsp. *cacaoui*, first report in a human infection. J. Clin. Microbiol., 50, 1484-1486.
- Ramesh, S., Rajesh, M., Mathivanan, N., 2009. Characterization of a thermostable alkaline protease produced by marine *Streptomyces fungicidicus* MML1614. Bioprocess. Biosys. Eng., 32, 791-800.
- Riviere, E., Neau, D., Roux, X., Lippa, N., Roger-Schmeltz, J., Mercie, P., Longy Boursier, M., 2012. Pulmonary *Streptomyces* infection in patient with sarcoidosis, France, Emerg. Infect. Dis., 18, 1907-1909.
- Rose III, C.E., Brown, J.M., Fisher, J.F., 2008. Brain abscess caused by *Streptomyces* infection following penetration trauma: Case report and results of susceptibility analysis of 92 isolates of *Streptomyces* species submitted to the CDC from 2000 to 2004. J. Clin. Microbiol., 46, 821-823.
- Saitou, N., Nei, M., 1987. The neighbor-joining method—a new method for reconstructing phylogenetic trees. Mol. Biol. Evol., 4, 406-425.
- Sampath, P., Subramanian, C., Chandrakasan, G., 1997. Extracellular proteases from *Streptomyces* spp. G157: Purification and characterization. Biotechnol. Appl. Biochem., 26, 85-90.
- Simkhada, J.R., Cho, S.S., Mander, P., Choiand, Y.H., Yoo, J.C., 2012. Purification, biochemical properties and antithrombotic effect of a novel *Streptomyces* enzyme on carrageenan induced mice tail thrombosis model. Thromb. Res., 129, 176-182.
- Teufel, P., Gotz, F., 1993. Characterization of an extracellular metalloprotease with elastase activity from *Staphylococcus epidermidis*. J. Bacteriol., 175, 4218-4224.
- Thompson, J.D., Higgins, D.G., Gibson, T.J., 1994. Clustal W—improving the sensitivity of progressive multiple sequence alignment through sequence weighting, position-specific gap penalties and weight matrix choice. Nucleic. Acid. Res., 22, 4673-4680.
- Tsuchida, O., Yamagata, Y., Ishizuka, J., Arai, J., Yamada, J., Ta-keuchi, M., Ichishima, E., 1986. An alkaline proteinase of an alkalophilic *Bacillus* sp. Curr. Microbiol., 14, 7-12.
- Vaitkevicius, K., Rompikuntal, P.K., Lindmark, B., Vaitkevicius, R., Song, T., Wai, S.N., 2008. The metalloprotease PrtV from *Vibrio cholera*. Purification and properties. FEBS J., 275, 3167-3177.
- Wassif, C., Cheek, D., Belas, R., 1995. Molecular analysis of a metalloprotease from *Proteus mirabilis*. J. Bacteriol., 177, 5790-5798.
- Wu, S., Dreyfus, L.A., Tzianabos, A.O., Chika, H., Cynthia, L., 2002. Sears diversity of the metalloprotease toxin produced by enterotoxigenic *Bacteroides fragilis*. Infect. Immun., 70, 2463-2471.

**How to cite this article:** Zerizer, H., Merouane, F., Bougherara, C., Gagaoua, M., Hafid, K., Boughachiche, F., Raoult, D., Boulahrouf, A., 2016. Characterization of proteolytic enzyme secreted by *Streptomyces cinereoruber* ssp. *cinereoruber* isolated from human pleural fluid. International Journal of Advanced Biological and Biomedical Research, 5(1), 275-285.

**Submit your next manuscript to CASRP Central and take full advantage of:**

- Convenient online submission
- Thorough peer review
- No space constraints or color figure charges
- Immediate publication on acceptance
- Inclusion in Google Scholar
- Research which is freely available for redistribution

Submit your manuscript at  
[www.casrp.co.uk/journals](http://www.casrp.co.uk/journals)

