



HAL
open science

A better collective management is required to conciliate both outputs woodlots in biodiversity-bioenergy debates

Marc Deconchat, Floriane Clement, Émilie Andrieu, Florin Malafosse

► To cite this version:

Marc Deconchat, Floriane Clement, Émilie Andrieu, Florin Malafosse. A better collective management is required to conciliate both outputs woodlots in biodiversity-bioenergy debates. Biodiversity and Human Well-Being - Europe's Role in Shaping Our Future, Nov 2022, Francfort, Germany. hal-04160356

HAL Id: hal-04160356

<https://hal.inrae.fr/hal-04160356v1>

Submitted on 12 Jul 2023

HAL is a multi-disciplinary open access archive for the deposit and dissemination of scientific research documents, whether they are published or not. The documents may come from teaching and research institutions in France or abroad, or from public or private research centers.

L'archive ouverte pluridisciplinaire **HAL**, est destinée au dépôt et à la diffusion de documents scientifiques de niveau recherche, publiés ou non, émanant des établissements d'enseignement et de recherche français ou étrangers, des laboratoires publics ou privés.



Distributed under a Creative Commons Attribution 4.0 International License

by Marc Deconchat, Floriane Clement, Emilie Andrieu, Florin Malafosse

Farm forests

- High diversity
- Low management
- Increasing wood stock



Wood products

Energy



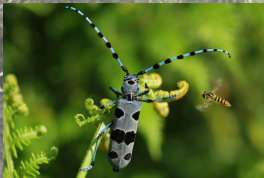
Domestic wood uses decreasing BUT may regain interest in the context of higher energy costs



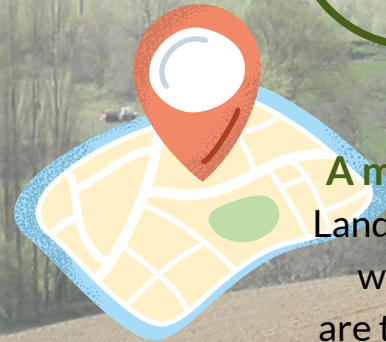
Farm forests are less harvested than the other productive forests. They have a potential to provide more local wood

Biodiversity

Ecosystem services



Low conservation value BUT may contribute strongly to the development of agroecology



A matter of scale: Landscape, territory, watershed, etc. are the levels where bioenergy and biodiversity can converge

Commons and anti-commons theoretical frameworks

A better collective management is required to conciliate both outputs

