



**HAL**  
open science

# Acral BRAF-mutated tubular adenoma should be distinguished from HPV42-related digital papillary adenocarcinoma

Thibault Kervarrec, Klaus J Busam

► **To cite this version:**

Thibault Kervarrec, Klaus J Busam. Acral BRAF-mutated tubular adenoma should be distinguished from HPV42-related digital papillary adenocarcinoma. *Journal of Cutaneous Pathology*, 2023, 50 (6), pp.577 - 579. 10.1111/cup.14430 . hal-04171390

**HAL Id: hal-04171390**

**<https://hal.inrae.fr/hal-04171390v1>**

Submitted on 26 Jul 2023

**HAL** is a multi-disciplinary open access archive for the deposit and dissemination of scientific research documents, whether they are published or not. The documents may come from teaching and research institutions in France or abroad, or from public or private research centers.

L'archive ouverte pluridisciplinaire **HAL**, est destinée au dépôt et à la diffusion de documents scientifiques de niveau recherche, publiés ou non, émanant des établissements d'enseignement et de recherche français ou étrangers, des laboratoires publics ou privés.



Distributed under a Creative Commons Attribution - NonCommercial 4.0 International License

## Acral *BRAF*-mutated tubular adenoma should be distinguished from HPV42-related digital papillary adenocarcinoma

We read the article entitled “Two distinct pathogenic pathways of digital papillary adenocarcinoma – *BRAF* mutation or low-risk HPV infection,” which was recently published in your journal, and would like to share our thoughts on the findings to avoid confusion in skin tumor nomenclature and prevent potential harm to patients from misdiagnosis.

Digital papillary adenocarcinoma (DPA) is a rare sweat gland carcinoma capable of metastasis. It almost exclusively arises at acral sites.<sup>1,2</sup> Microscopically, DPA is characterized by a mixed solid and cystic architecture with, often focal, papillary projections (Figure 1). Tubular structures sometimes forming “back-to-back glands” are associated with a myoepithelial component present at the periphery but also forming solid nests. Cytologic features are often low grade, but they do not predict clinical behavior.<sup>3</sup> Rare DPA cases with anaplastic cytology have been reported.<sup>4,5</sup> Immunohistochemistry usually reveals diffuse SOX10 positivity, EMA, and CEA expression restricted to the glands while p63 expression is observed in the myoepithelial component<sup>6</sup> (Figure 1).

The diagnosis of DPA can be challenging. It primarily needs to be distinguished from benign sweat gland tumors arising at acral sites, such as hidradenoma,<sup>7</sup> cystadenoma,<sup>8</sup> or tubular adenoma.<sup>9,10</sup> Tubular adenoma is characterized by multiple independent tubules, lined by a luminal layer of cuboidal cells sometimes harboring decapitation secretion associated with a peripheral myoepithelial component. Frequent pseudopapillary structures are detected in this setting and should not lead to misdiagnosis of these cases as DPA.<sup>11</sup>

Molecular analyses of sweat gland tumors have identified recurrent and mutually exclusive oncogenic drivers such as *CRTC1/3::MAML2* in hidradenoma and their malignant counterparts<sup>12</sup> or *BRAF* mutations in tubular adenoma.<sup>13</sup> Recently, human papillomavirus 42 (HPV42) was discovered in DPA.<sup>5,14–17</sup> Indeed, DPA genome was found in 96%–100% of tested DPA tumors,<sup>5,16</sup> but not in any other sweat gland neoplasm or adenocarcinoma.<sup>5</sup>

In their article, Bui et al<sup>18</sup> reported a series of eight acral sweat glands tumors diagnosed as “DPA.” In contrast to prior observations with a larger set of tumors<sup>5,14,16</sup> they claim to have identified two “DPA” groups with distinct phenotypes, genetics, and outcomes. “Group A” ( $n = 4$ ) included painless slow-growing nodules microscopically characterized by small, well defined dermal tumors forming independent glandular structures. Such glands were composed of cuboidal luminal cells with pseudopapillary projections associated with a myoepithelial cells layer at the periphery. Only slight cytologic atypia and rare mitotic

figures were observed while no cellular necrosis, perineural or vascular invasion were detected. No recurrence or metastasis were observed. Molecular analysis revealed *BRAF* mutations in all analyzed samples while no HPV genome was detected.

In contrast, “Group B” included fast-growing tumors with aggressive behavior including one tumor with local recurrences, lymph nodes, and lung metastases. These cases displayed a more solid architecture and several extended into subcutaneous tissue. Mitotic figures and cytological atypia were reported. In situ hybridization targeting so called “low grade” HPV genotypes including HPV42 was positive in all cases and *BRAF* mutation was absent.

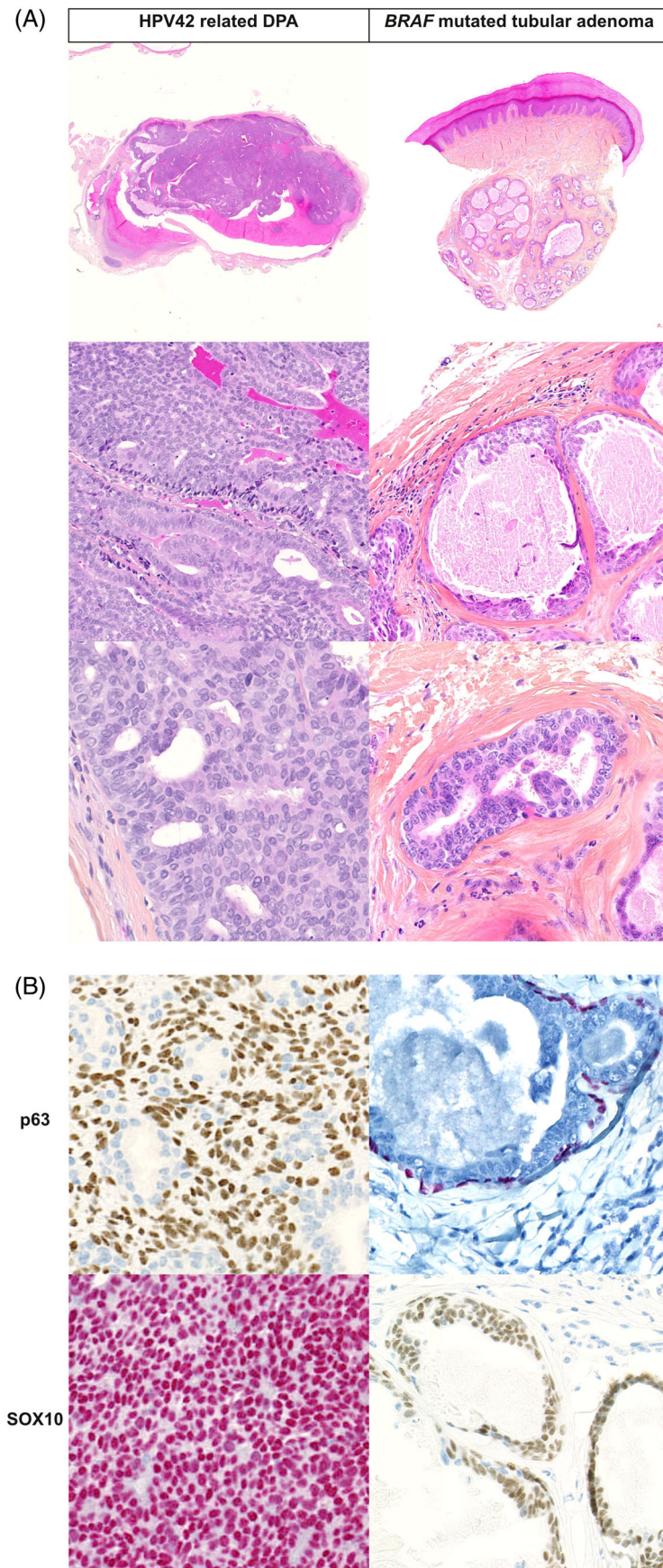
In our opinion, the tumors of the group A had the microscopic and genetic hallmarks of tubular adenoma without any worrisome clinical or microscopic characteristics, while only Group B cases had morphologic, immunohistochemical and genetic features of DPA.

Unfortunately, there are confusing published data suggesting a gray zone/progression between tubular adenoma and DPA.<sup>18–20</sup> We believe that there is a clear distinction between these two tumors, which is crucial for surgical management and assessment of recurrence risk. DPA is a cancer with metastatic potential,<sup>1,3</sup> while tubular adenoma is a benign neoplasm.<sup>21</sup> The concept of “papillary adenocarcinoma in situ” was introduced several years ago for tubular adenoma cases harboring atypical microscopic features including sclerotic stroma, mitotic figures and/or foci of necrosis.<sup>11,20</sup> However, no solid clinical or pathologic evidence of malignant transformation was provided in the reported cases, including reference 40 cited by Bui et al.<sup>22</sup> Therefore, it is hard to justify why such cases should be regarded as carcinoma. When a tumor meets microscopic and molecular criteria for a tubular adenoma, it should be classified as such irrespective of the anatomic site where it occurs. We apply the same principle for the diagnosis of acral hidradenomas or poromas. When such benign tumors affect acral sites, they should not be classified as DPA. These benign tumors are cured by conservative excision, while the standard of care for patients with DPA is usually amputation and sentinel lymph node biopsy.<sup>23</sup>

We acknowledge that it can be difficult to render a definitive distinction between a tubular adenoma and DPA on histopathologic grounds alone, especially on a partial incomplete biopsy sample. However, the identification of distinct and mutually exclusive oncogenic drivers, that is, HPV42 and *BRAF* mutations in DPA and tubular adenoma, respectively, has greatly facilitated their diagnostic distinction.

This is an open access article under the terms of the [Creative Commons Attribution-NonCommercial](https://creativecommons.org/licenses/by-nc/4.0/) License, which permits use, distribution and reproduction in any medium, provided the original work is properly cited and is not used for commercial purposes.

© 2023 The Authors. Journal of Cutaneous Pathology published by John Wiley & Sons Ltd.



**FIGURE 1** Morphological and immunohistochemical features of HPV42-related digital papillary adenocarcinoma (DPA) and BRAFV600E mutated tubular adenoma. (A) Microscopic features of the cases. DPA harbors a mixed solid and cystic architecture with focal papillary projections ( $\times 1$ , HPS). “Back-to-back” glands are frequently observed in this setting ( $\times 10$  and  $\times 20$ , HPS). By contrast, tubular adenoma is composed of independent tubules with frequent pseudopapillary formation ( $\times 4$ , HPS). Sclerotic stroma and decapitation secretion are observed ( $\times 10$  and  $\times 20$ , HPS). (B) Immunohistochemical features. DPA and tubular adenoma exhibit similar immunohistochemical profiles with diffuse SOX10 positivity, and p63 expression restricted to the myoepithelial component ( $\times 20$ ).

Although there are two previous publications that reported BRAFV600E mutations in “DPA,”<sup>19,24</sup> both had microscopic features most in keeping with a tubular adenoma, occurred in women (DPA usually affects men) and none of them was located on a digit.

In summary, we believe that HPV42-related DPA and BRAF-mutated tubular adenoma constitute two separate tumor entities with distinct morphology, genetic, and behaviors. Tubular adenomas can occur at acral sites, and it is important not to confuse them with DPA for best patient care.

## KEYWORDS

BRAF, digital papillary adenocarcinoma, HPV42, tubular adenoma


## CONFLICT OF INTEREST STATEMENT

The authors declare no conflict of interest.

## DATA AVAILABILITY STATEMENT

The data that support the findings of this study are available on request from the corresponding author. The data are not publicly available due to privacy or ethical restrictions.

Thibault Kervarrec<sup>1,2,3</sup> 

Klaus J. Busam<sup>4</sup> 

<sup>1</sup>CARADERM, France

<sup>2</sup>Department of Pathology, University Hospital of Tours, Tours, France

<sup>3</sup>Biologie des infections à Polyomavirus, UMR1282 INRAE, University of Tours, France

<sup>4</sup>Department of Pathology and Laboratory Medicine, Memorial Sloan Kettering Cancer, New York, New York, USA

## Correspondence

Thibault Kervarrec, Department of Pathology, Hôpital Trousseau, CHRU de Tours, 37044 TOURS Cedex 09, France  
Email: [thibaultkervarrec@yahoo.fr](mailto:thibaultkervarrec@yahoo.fr)

## ORCID

Thibault Kervarrec  <https://orcid.org/0000-0002-2201-6914>

Klaus J. Busam  <https://orcid.org/0000-0003-0888-9601>

## REFERENCES

- Kao GF, Helwig EB, Graham JH. Aggressive digital papillary adenoma and adenocarcinoma. A clinicopathological study of 57 patients, with histochemical, immunopathological, and ultrastructural observations. *J Cutan Pathol*. 1987;14(3):129-146. doi:[10.1111/j.1600-0560.1987.tb00488.x](https://doi.org/10.1111/j.1600-0560.1987.tb00488.x)
- Weingertner N, Gressel A, Battistella M, Cribier B. Aggressive digital papillary adenocarcinoma: a clinicopathological study of 19 cases. *J Am Acad Dermatol*. 2017;77(3):549-558.e1. doi:[10.1016/j.jaad.2017.02.028](https://doi.org/10.1016/j.jaad.2017.02.028)
- Duke WH, Sherrod TT, Lupton GP. Aggressive digital papillary adenocarcinoma (aggressive digital papillary adenoma and adenocarcinoma revisited). *Am J Surg Pathol*. 2000;24(6):775-784. doi:[10.1097/0000478-20006000-00002](https://doi.org/10.1097/0000478-20006000-00002)
- Nishimoto J, Amoh Y, Niiyama S, Takasu H, Katsuoka K. Aggressive digital papillary adenocarcinoma on the palm with pulmonary metastases. *J Dermatol*. 2008;35(7):468-470. doi:[10.1111/j.1346-8138.2008.00504.x](https://doi.org/10.1111/j.1346-8138.2008.00504.x)
- Vanderbilt C, Brenn T, Moy AP, et al. Association of HPV42 with digital papillary adenocarcinoma and the use of in situ hybridization for its distinction from acral hidradenoma and diagnosis at non-acral sites. *Mod Pathol*. 2022;35:1405-1410. doi:[10.1038/s41379-022-01094-8](https://doi.org/10.1038/s41379-022-01094-8)
- Suchak R, Wang WL, Prieto VG, et al. Cutaneous digital papillary adenocarcinoma: a clinicopathologic study of 31 cases of a rare neoplasm with new observations. *Am J Surg Pathol*. 2012;36(12):1883-1891. doi:[10.1097/PAS.0b013e31826320ec](https://doi.org/10.1097/PAS.0b013e31826320ec)
- Wiedemeyer K, Gill P, Schneider M, Kind P, Brenn T. Clinicopathologic characterization of hidradenoma on acral sites: a diagnostic pitfall with digital papillary adenocarcinoma. *Am J Surg Pathol*. 2020;44(5):711-717. doi:[10.1097/PAS.0000000000001426](https://doi.org/10.1097/PAS.0000000000001426)
- Molina-Ruiz AM, Llamas-Velasco M, Rütten A, Cerroni L, Requena L. “Apocrine hidrocystoma and cystadenoma”-like tumor of the digits or toes: a potential diagnostic pitfall of digital papillary adenocarcinoma. *Am J Surg Pathol*. 2016;40(3):410-418. doi:[10.1097/PAS.0000000000000547](https://doi.org/10.1097/PAS.0000000000000547)
- Asgari M, Chen S. Commentary on a recent article entitled “a case report of papillary digital adenocarcinoma with BRAFV600E mutation and quantified mutational burden”. *Am J Dermatopathol*. 2021;43:317. doi:[10.1097/DAD.0000000000001820](https://doi.org/10.1097/DAD.0000000000001820)
- Asgari M, Chen S. Papillary eccrine adenoma should not be mistaken for aggressive digital papillary adenocarcinoma. *Clin Exp Dermatol*. 2014;39(2):223-224. doi:[10.1111/ced.12231](https://doi.org/10.1111/ced.12231)
- Landry M, Winkelmann RK. An unusual tubular apocrine adenoma. *Arch Dermatol*. 1972;105(6):869-879.
- Winnes M, Mölne L, Suurküla M, et al. Frequent fusion of the CRTC1 and MAML2 genes in clear cell variants of cutaneous hidradenomas. *Genes Chromosomes Cancer*. 2007;46(6):559-563. doi:[10.1002/gcc.20440](https://doi.org/10.1002/gcc.20440)
- Liau JY, Tsai JH, Huang WC, Lan J, Hong JB, Yuan CT. BRAF and KRAS mutations in tubular apocrine adenoma and papillary eccrine adenoma of the skin. *Hum Pathol*. 2018;73:59-65. doi:[10.1016/j.humpath.2017.12.002](https://doi.org/10.1016/j.humpath.2017.12.002)
- Wiesner T. The molecular revolution in dermatopathology. Paper presented at: International Society of Dermatopathology. 2019.
- Vanderbilt CM, Bowman AS, Middha S, et al. Defining novel DNA virus-tumor associations and genomic correlates using prospective clinical tumor/Normal matched sequencing data. *J Mol Diagn*. 2022;24(5):515-528. doi:[10.1016/j.jmoldx.2022.01.011](https://doi.org/10.1016/j.jmoldx.2022.01.011)
- Leiendecker L, Neumann T, Jung PS, et al. Human papillomavirus 42 drives digital papillary adenocarcinoma and elicits a germ-cell like program conserved in HPV-positive cancers. *Cancer Discov*. 2023;13:70-84. doi:[10.1158/2159-8290.CD-22-0489](https://doi.org/10.1158/2159-8290.CD-22-0489)
- Starrett GJ, Schiller JT, Lowy DR. HPV42, a “low-risk” type, and digital papillary adenocarcinoma. *Cancer Discov*. 2023;13(1):17-18. doi:[10.1158/2159-8290.CD-22-1150](https://doi.org/10.1158/2159-8290.CD-22-1150)
- Bui CM, Pukhalskaya T, Smoller BR, et al. Two distinct pathogenic pathways of digital papillary adenocarcinoma—BRAF mutation or low-risk HPV infection. *J Cutan Pathol*. 2023;50(6):568-576. doi:[10.1111/cup.14386](https://doi.org/10.1111/cup.14386)
- Trager MH, Jurkiewicz M, Khan S, Niedt GW, Geskin LJ, Carvajal RD. A case report of papillary digital adenocarcinoma with BRAFV600E mutation and quantified mutational burden. *Am J Dermatopathol*. 2021;43(1):57-59. doi:[10.1097/DAD.0000000000001694](https://doi.org/10.1097/DAD.0000000000001694)
- Chen S, Asgari M. Papillary adenocarcinoma in situ of the skin: report of four cases. *Dermatol Pract Concept*. 2014;4(2):23-28. doi:[10.5826/dpc.0402a04](https://doi.org/10.5826/dpc.0402a04)
- Sangüeza OP, Cassarino DS, Glusac EJ, et al. tubular adenoma. *WHO Classification of Skin Tumours*. IARC; 2018.
- Galadari E, Mehregan AH, Lee KC. Malignant transformation of eccrine tumors. *J Cutan Pathol*. 1987;14(1):15-22. doi:[10.1111/j.1600-0560.1987.tb00122.x](https://doi.org/10.1111/j.1600-0560.1987.tb00122.x)
- Bartelstein MK, Schwarzkopf E, Busam KJ, Brady MS, Athanasian EA. Sentinel lymph node biopsy predicts systemic recurrence in digital papillary adenocarcinoma. *J Surg Oncol*. 2020;122(7):1323-1327. doi:[10.1002/jso.26170](https://doi.org/10.1002/jso.26170)
- Bell D, Aung P, Prieto VG, Ivan D. Next-generation sequencing reveals rare genomic alterations in aggressive digital papillary adenocarcinoma. *Ann Diagn Pathol*. 2015;19(6):381-384. doi:[10.1016/j.anndiagpath.2015.08.002](https://doi.org/10.1016/j.anndiagpath.2015.08.002)