



**HAL**  
open science

## BIPAA, Bioinformatics Platform for the Agroecosystems Arthropods.

Stéphanie Robin, Fabrice Legeai, Anthony Bretaudeau

► **To cite this version:**

Stéphanie Robin, Fabrice Legeai, Anthony Bretaudeau. BIPAA, Bioinformatics Platform for the Agroecosystems Arthropods.. JOBIM 2023 - Journées Ouvertes en Biologie, Informatique et Mathématiques, Jun 2023, Plouzané (Brest Métropole), France. pp.1-1, 2023. hal-04176786

**HAL Id: hal-04176786**

**<https://hal.inrae.fr/hal-04176786v1>**

Submitted on 26 Jan 2024

**HAL** is a multi-disciplinary open access archive for the deposit and dissemination of scientific research documents, whether they are published or not. The documents may come from teaching and research institutions in France or abroad, or from public or private research centers.

L'archive ouverte pluridisciplinaire **HAL**, est destinée au dépôt et à la diffusion de documents scientifiques de niveau recherche, publiés ou non, émanant des établissements d'enseignement et de recherche français ou étrangers, des laboratoires publics ou privés.



Distributed under a Creative Commons Attribution 4.0 International License

BIPAA is a bioinformatics platform from the **French National Institute for Agricultural, Food and Environment (INRAE)** to assist genomics and post-genomics programs developed on insects associated to agroecosystems. It is located in Rennes (France) and is integrated in **GenOuest** platform infrastructure (<https://www.genouest.org/>).

**Contacts** : [bipaa@inrae.fr](mailto:bipaa@inrae.fr) , <https://bipaa.genouest.org/>

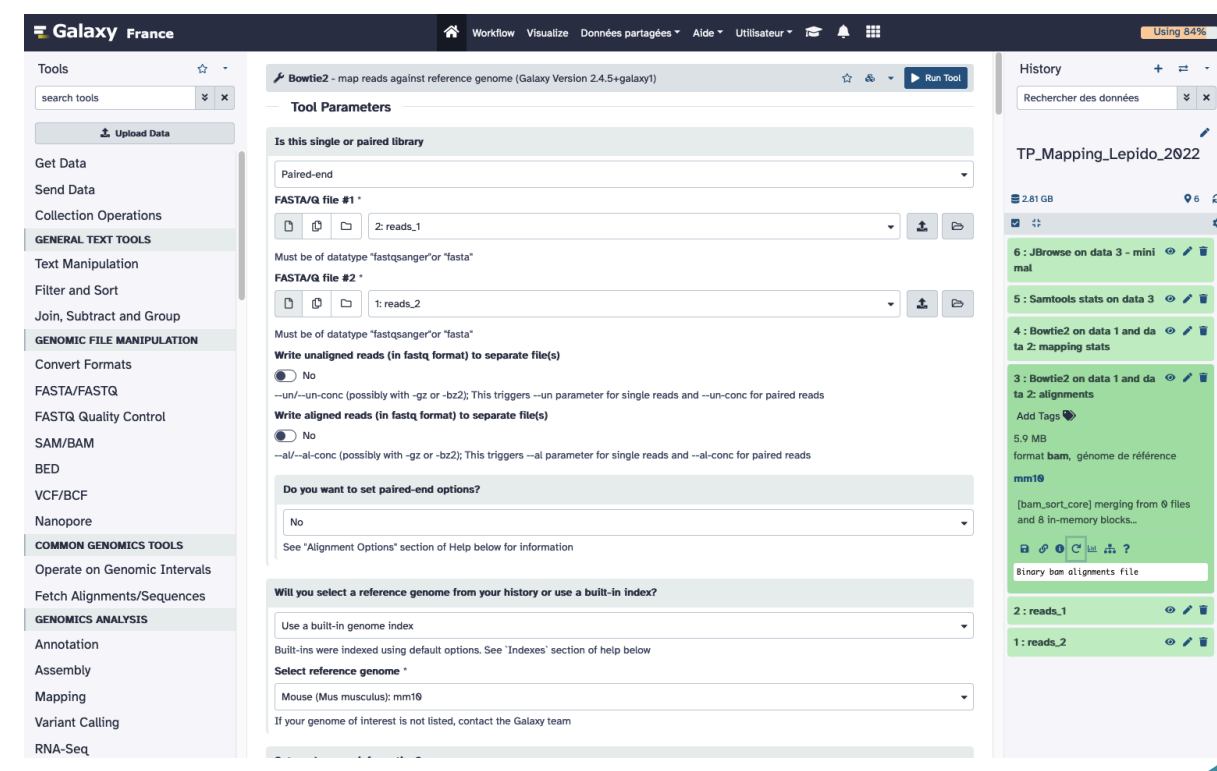
### Data analysis

BIPAA supports a network of scientists from various french labs for analyzing their **genomics data**. BIPAA proposes personal guidance for developing scripts, running complex workflows on a computing cluster.

#### Topics :

- Genome assembly and annotation
- Transcriptomics analysis and non coding RNA
- Transposable elements
- Genomes comparison (Orthology)
- Variant identification
- Genomics and epigenomics data integration

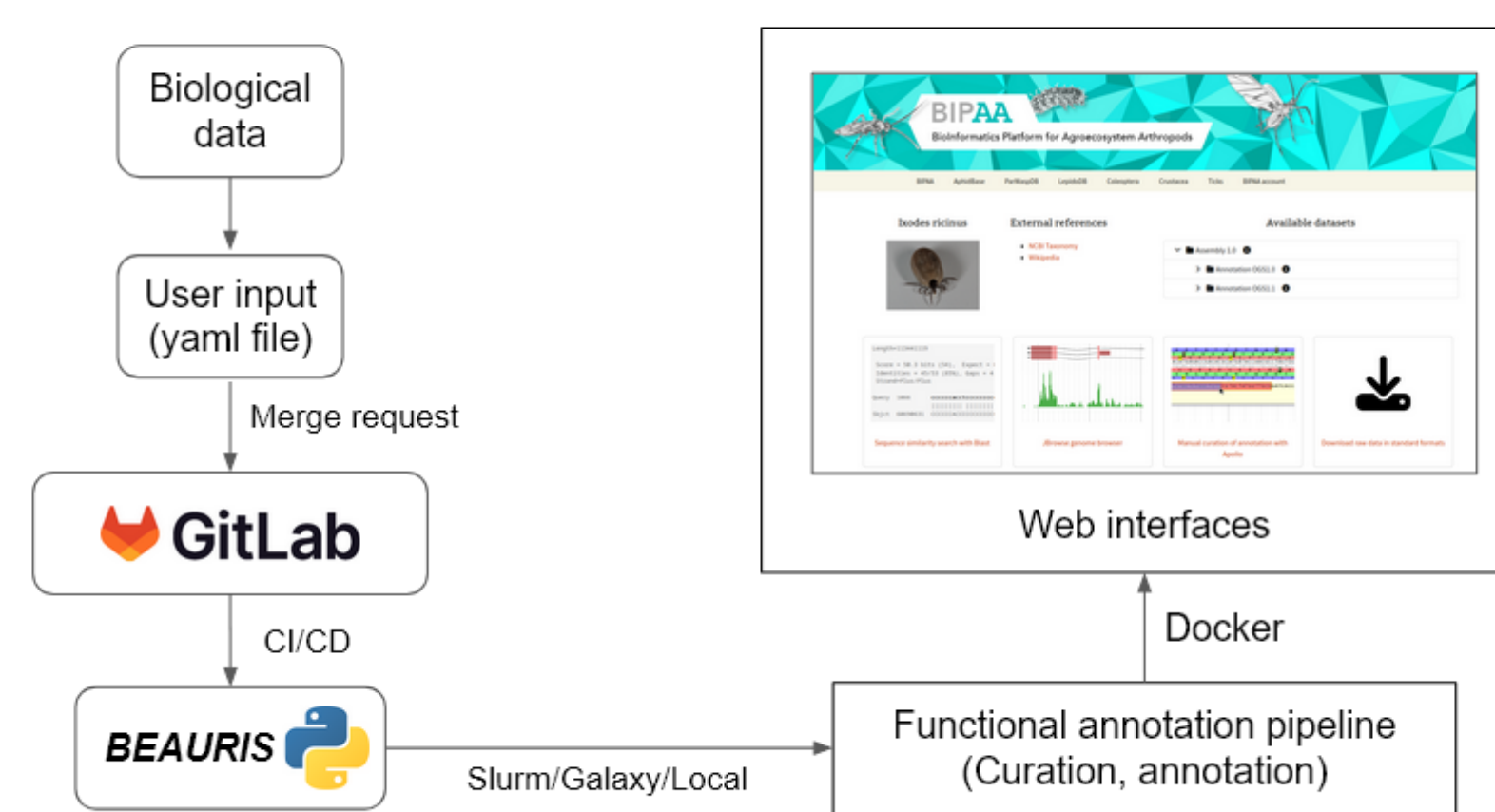
BIPAA contributes to the national **Galaxy** server [usegalaxy.fr](https://usegalaxy.fr)



### Information systems

BIPAA Information systems are based on the **BEAURIS project** <https://gitlab.com/beauris/beauris> and **Galaxy Genome Annotation** <https://galaxy-genome-annotation.github.io/>

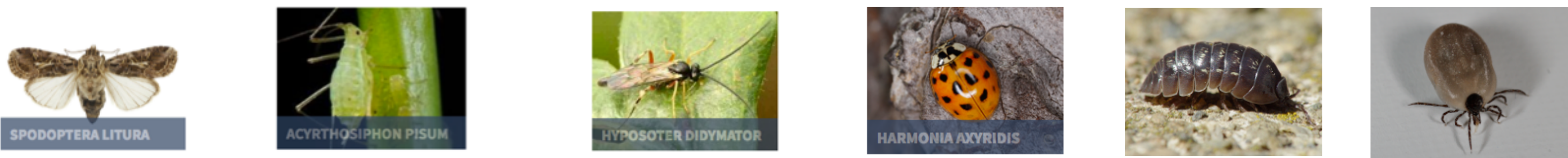
BEAURIS: How does it work?



- Each genome is a multi-container application.
- This system permits a u t o m a t i c deployment of new genome and update.
- This is a reproducible, re-usable, modular and extensible system.

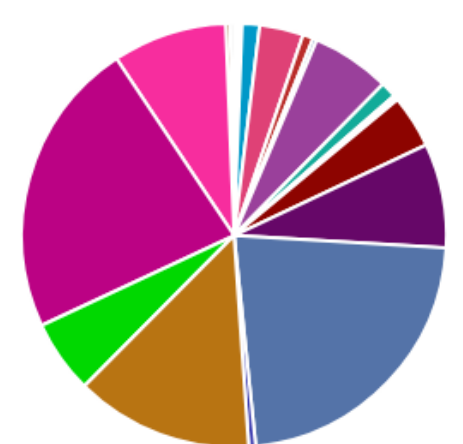
It organizes and manages genomics data generated by various international groups and offers **textual and graphical tools** for browsing and querying genomics data.

### BIPAA hosts multiple arthropod genomes

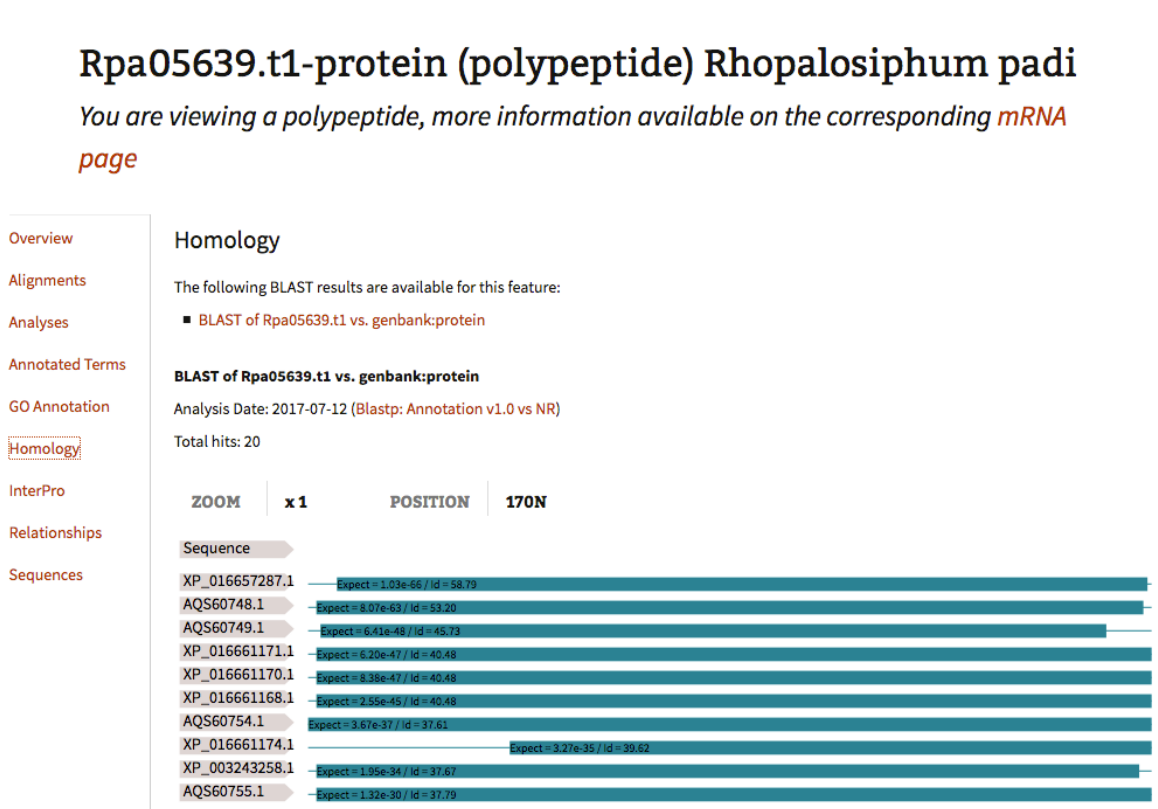


**LepidoDB** Aphidbase **ParWaspDB** **ColeoDB** **CrustaDB** **TickDB**  
 17 lepidopterans 12 aphids 15 parasitoid wasps 3 coleoptera 1 crustacea 4 ticks

For each genome, textual and graphical tools are available



Gene Ontology



Sequence information

Genome browsers

Orthology and synteny

### Collaborations

• Involved in various bioinformatics research projects, in collaboration with teams in **Inria/IRISA** in Rennes :

**GenScale** (complex genome assembly, variant identification)

**Dyliss** (data integration and mining, Askomics)



• Associated with 3 national networks of INRAE : **BAPOA** (Biologie Adaptative des Pucerons et Organismes Associés), **ADALEP** (Adaptation à l'environnement biotique chez les lépidoptères) and **REACTION** (Réseau d'échange sur les mécanismes Épigenétiques qui façonnent les interactions)

• Involved in international consortia and insect genome projects (**i5k** : sequencing of 5000 insect genomes)



• More than 700 users are currently listed

### Trainings

BIPAA is involved in training sessions in partnership with the **GenOuest** bioinformatics platform and the **BARIC** (Bioinformatique pour l'Analyse, la Représentation et Intégration de Connaissances) community of INRAE, and in tutorials development in **Galaxy Training Network (GTN)**.

Project 2020-1-NL01-KA203-064717 is funded with the support of the Erasmus+ programme of the European Union. Their funding has supported a large number of tutorials within the GTN across a wide array of topics.