



**HAL**  
open science

## Dose- and time-dependent effects of interferon tau on bovine endometrial gene expression

A K Talukder, M B Rabaglino, J A Browne, Gilles Charpigny, P Lonergan

► **To cite this version:**

A K Talukder, M B Rabaglino, J A Browne, Gilles Charpigny, P Lonergan. Dose- and time-dependent effects of interferon tau on bovine endometrial gene expression. *Theriogenology*, 2023, 211, pp.1 - 10. 10.1016/j.theriogenology.2023.07.033 . hal-04189959

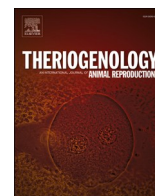
**HAL Id: hal-04189959**

**<https://hal.inrae.fr/hal-04189959>**

Submitted on 29 Aug 2023

**HAL** is a multi-disciplinary open access archive for the deposit and dissemination of scientific research documents, whether they are published or not. The documents may come from teaching and research institutions in France or abroad, or from public or private research centers.

L'archive ouverte pluridisciplinaire **HAL**, est destinée au dépôt et à la diffusion de documents scientifiques de niveau recherche, publiés ou non, émanant des établissements d'enseignement et de recherche français ou étrangers, des laboratoires publics ou privés.



## Dose- and time-dependent effects of interferon tau on bovine endometrial gene expression

A.K. Talukder<sup>a,b</sup>, M.B. Rabaglino<sup>a</sup>, J.A. Browne<sup>a</sup>, G. Charpigny<sup>c</sup>, P. Lonergan<sup>a,\*</sup>

<sup>a</sup> School of Agriculture and Food Science, University College Dublin, Belfield, Dublin 4, Ireland

<sup>b</sup> Department of Gynecology, Obstetrics & Reproductive Health, Bangabandhu Sheikh Mujibur Rahman Agricultural University, Gazipur, Bangladesh

<sup>c</sup> INRAE, Biologie du Développement et Reproduction, Jouy en Josas, France

### ARTICLE INFO

#### Keywords:

Endometrium  
Explant  
Interferon tau  
Pregnancy  
Bovine

### ABSTRACT

Failure by the developing conceptus to secrete sufficient interferon tau (IFNT), required for maternal recognition of pregnancy (MRP), at the appropriate time is related to early pregnancy loss in cattle. We aimed to test the hypothesis that there is a dose- and time-dependent relationship between IFNT and the endometrial expression of key interferon-stimulated genes (ISGs) involved in the signalling cascade leading to MRP in cattle. Candidate genes were identified first through a bioinformatic approach, where integrated transcriptomic data from two previous studies were analyzed to identify endometrial genes induced by IFNT. Next, expression of selected candidate genes was investigated in vitro in endometrial explants. Endometrial explants collected from cows (n = 8) in the late luteal phase of the estrous cycle were cultured in medium without (control) or with recombinant ovine IFNT (1, 10, 100 ng/mL) for 6 h. Simultaneously, endometrial explants were cultured in medium containing 100 ng/mL IFNT for different time periods (15 min, 30 min, 1 h, 3 h, 6 h). Gene expression was analyzed by RT-qPCR. We identified 54 endometrial genes responding to IFNT and to some degree to the conceptus, from which five ISGs (*CMPK2*, *BPNT1*, *IFI35*, *TNFSF10* and *TRIM38*) were further selected for the dose- and time-dependent experiments. Classical ISGs (*ISG15*, *OAS1*, *MX1* and *MX2*) were up-regulated ( $P < 0.05$ ) in endometrium by 1 ng/mL IFNT. However, other selected ISGs (*CMPK2*, *BPNT1*, *IFI35*, *TNFSF10* and *TRIM38*) were induced only by higher concentrations (10 and 100 ng/mL) of IFNT ( $P < 0.05$ ). In terms of duration of exposure, IFNT at 100 ng/mL induced a significant ( $P < 0.05$ ) increase in *ISG15* and *CMPK2* expression after 1 h incubation, while all other studied ISGs in the endometrium were upregulated when cultured for 3 or 6 h, but did not affect expression when the duration of culture was for 1 h or less. These results suggest that IFNT acts on the uterus in both a dose- and time-dependent manner in cattle and that timely exposure of the endometrium to sufficient IFNT is essential for appropriate signalling to ensure successful pregnancy establishment.

### 1. Introduction

In high-yielding dairy cattle, a significant proportion (up to 50% in some scenarios) of embryo loss occurs in the two weeks following natural breeding or artificial insemination [1–4]. Such early embryonic death results in significant economic loss in dairy farms by decreasing pregnancy rates and subsequent impacts on milk production. Most losses occur during the pre-implantation stage of pregnancy likely due to poor oocyte quality and developmental competence of the early embryo, sometimes accompanied by uterine dysfunction, resulting in failure of the conceptus to develop properly, signal maternal pregnancy recognition and/or undergo implantation and placentation [3]. It has been

estimated recently that approximately 50% of pregnancy loss is due to luteal regression and about 50% is due to conceptus failure [5].

Using in vitro fertilization, bovine blastocysts can be efficiently produced in the laboratory in the absence of any interaction with the female reproductive tract; however, they must be transferred to a receptive uterus for growth and development into an elongated filamentous conceptus to occur. The elongation process does not occur in vitro or in vivo in the absence of uterine glands [6,7] indicating that the process is maternally-driven. Thus, appropriate communication between the developing embryo/conceptus and the mother in the first 2–3 weeks after fertilization is essential for pregnancy establishment.

Establishment of pregnancy in cattle begins at the conceptus stage

\* Corresponding author.

E-mail address: [pat.lonergan@ucd.ie](mailto:pat.lonergan@ucd.ie) (P. Lonergan).

<https://doi.org/10.1016/j.theriogenology.2023.07.033>

Received 10 July 2023; Received in revised form 20 July 2023; Accepted 21 July 2023

Available online 27 July 2023

0093-691X/© 2023 The Authors. Published by Elsevier Inc. This is an open access article under the CC BY license (<http://creativecommons.org/licenses/by/4.0/>).

and includes various steps including maternal pregnancy recognition, implantation, and placentation [8,9]. Following natural breeding or artificial insemination (Day 0), the oocyte is fertilized by sperm in the oviduct and the resultant embryo enters the uterus around Day 4, forming a blastocyst by Day 6–7, containing an inner cell mass and an outer layer of trophoblast cells surrounding the blastocoel cavity. Next, the blastocyst hatches from the zona pellucida on Day 8–9 and develops into an ovoid, then tubular form which begins to elongate on Day 12–14, forming a filamentous conceptus [10]. Recent studies reported that interferon tau (IFNT) from Day 7–8 blastocysts activates interferon-stimulated genes (ISGs) locally in the uterus [11–13]. As the elongation process progresses, the trophoblast secretes increasing amounts of IFNT [14], which is responsible for MRP around Day 16–17 of pregnancy. IFNT silences transcription of estradiol receptor alpha (ESR1) and, in turn, oxytocin receptors, thereby inhibiting oxytocin-induced luteolytic pulses of prostaglandin F<sub>2</sub>alpha from the uterus. Luteolysis is thus prevented and progesterone (P4) output by the corpus luteum (CL) is maintained [15].

Recent studies from our group and others have made significant progress in clarifying the role of the maternal environment, in particular the role of conceptus-derived IFNT in regulating endometrial function for the successful establishment of pregnancy in cattle [16,17]. Using an endometrial explant culture system, we have demonstrated a local IFNT-dependent effect of blastocysts on endometrial gene expression [13,18], identified IFNT-dependent and independent transcripts in the endometrium induced by the conceptus which may play a role in signalling to the endometrium around pregnancy recognition [19], and demonstrated that the endometrial transcriptome responds differently to long vs short (i.e., developmentally compromised) age-matched conceptuses which may be indicative of conceptus developmental competence [20]. These data highlight the importance of IFNT in signalling to the maternal endometrium and thereby maintaining P4 output from the CL, ensuring continued development of the conceptus. However, the threshold concentration of IFNT required to establish pregnancy in cattle remains unknown [16]. We have demonstrated that short conceptuses fail to induce a large number of ISGs in the bovine endometrium that are altered by both IFNT and age-matched long conceptuses, suggesting insufficient IFNT production, and consequent compromised maternal signalling, is a major contributing factor for lower survival of short conceptuses [20]. Thus, it appears that a threshold amount of IFNT is required for MRP and pregnancy establishment, and thus may be related to fertility in cattle. Interestingly, the transfer of conceptuses up to Day 16 of the oestrous cycle, but not on Day 17, can establish pregnancy in cattle [21] suggesting that the IFNT-signalling effect required to prevent luteolysis is quite acute. We hypothesized that there is a dose- and time-dependent relationship between IFNT and the endometrial expression of key ISGs involved in the signalling cascade leading to MRP, which may be associated with successful pregnancy establishment in cattle. Thus, we aimed to investigate the dose- and time-dependent effects of IFNT on the expression of key ISGs in bovine endometrium. In addition to well-known classical ISGs (*ISG15*, *OAS1*, *MX1* and *MX2*), we screened other potential ISGs through a bioinformatics approach, involving the integration of data from previous studies from our group and the application of machine learning (ML) tools. Next, the selected ISGs were investigated in vitro by measuring their expression in endometrial explants treated with different concentrations of IFNT for various time periods.

## 2. Materials and methods

### 2.1. Ethics statement

All experimental procedures involving animals were approved by the Animal Research Ethics Committee of University College Dublin and were licensed by the Health Products Regulatory Authority, Ireland, in accordance with Statutory Instrument No. 543 of 2012 (under Directive

2010/63/EU on the Protection of Animals used for Scientific Purposes).

### 2.2. Identification of candidate genes through a bioinformatics approach

Transcriptomic data from two independent studies [20,22], both of which measured the endometrial response through RNAseq in endometrial explants collected on Day 15 and co-cultured for 6 h with: (i) nothing (control, n = 10), (ii) 100 ng/mL of IFNT (n = 10), or (iii) a single Day 15 conceptus (n = 33), were employed to determine the candidate genes through R packages. First, data were integrated by removing the study effect with the *sva* package [23] (Supplementary Fig. 1). Next, data were pre-filtered by selecting the up-regulated differentially expressed genes (DEGs; false discovery rate < 0.05) when contrasting between groups with the DESeq2 package [24]. Endometrial genes responding to IFNT were identified as those up-regulated DEGs overlapping between IFNT vs conceptus and IFNT vs control. These overlapping genes were further explored through the Boruta algorithm, to identify endometrial genes mainly responding to IFNT rather than to the conceptus. The Boruta method is a feature selection wrapper built around the Random Forest classification algorithm, which compares the importance of each gene to classify the groups with genes selected at random [25]. This process was repeated up to 10,000 until all the top genes were confirmed with a confidence of 99.9%.

The DAVID Bioinformatics Resource 6.8 [26] was used to carry out a Gene Ontology (GO) and Kyoto Encyclopedia of Genes and Genomes (KEGG) pathway analysis of the endometrial genes responding to IFNT identified by the Boruta algorithm. GO and KEGG categories were considered enriched when  $P \leq 0.05$  and considered to be approaching significance when  $0.05 \leq P \leq 0.1$ . In addition, protein-protein interaction (PPI) network analysis was performed using the Search Tool for the Retrieval of Interacting Genes (STRING) (<https://string-db.org/>) to elucidate the association between two or more products.

### 2.3. Dose- and time-dependent effects of IFNT on endometrial ISG expression

Five endometrial genes exhibiting greater differences between the IFNT and control groups were selected from the genes identified by the Boruta algorithm for in vitro assessments using endometrial explants, in addition to four classical ISGs (*ISG15*, *OAS1*, *MX1* and *MX2*).

#### 2.3.1. Endometrial explant culture

Bovine reproductive tracts (n = 8) were collected from a local abattoir immediately after slaughter in the late luteal phase of the estrous cycle based on the ovarian status [27] and a previously described protocol [19]. Tracts were placed on ice and transported to the laboratory within 2 h. In the laboratory, the endometrial explants were prepared according to a previously described protocol Borges, Healey [28]. Briefly, the uterine horn ipsilateral to the CL was dissected from the rest of the reproductive tract, sprayed with 70% ethanol and washed with 1 × PBS (Gibco, ThermoFisher Scientific) containing 1% (v/v) 100 × antibiotic-antimycotic (ABAM; Gibco). Next, the endometrium was incised longitudinally on the *anti*-mesometrial side and the endometrial luminal surface was washed with PBS containing 1% ABAM. At this stage, an 8 mm biopsy punch (Covetrus BV) was applied to obtain intercaruncular endometrial tissue from the middle third of the uterine horn. Sterile scissors were then used to separate the endometrium from the underlying tissue. The collected endometrial explants (50–80 mg) were washed in conical tubes containing 25 mL of Hank balanced salt solution (HBSS; Gibco, ThermoFisher Scientific) supplemented with 1% ABAM. The medium was removed, and explants were washed twice more in 25 mL of HBSS without ABAM. In a sterile safety cabinet, the explants were individually placed epithelial side up in culture wells of 4-well plate (Nunc™, ThermoFisher Scientific) containing 1 mL of Roswell Park Memorial Institute (RPMI) medium (Gibco) with 1% ABAM. The explants were cultured in 5% CO<sub>2</sub> and humidified air at

**Table 1**  
List of the primers used in RT-qPCR.

Gene	Accession No.	Primer (Sequence 5'–3')	Product length (bp)
<i>ISG15</i>	NM_174366.1	F: GTCTTTTGAAGGGAGGCCCA R: TACCCACCCGAAGACGTAG	102
<i>OAS1</i>	NM_001029846.2	F: GACGTGCTTCCAAGAGTCCA R: GGAAGACGACAAGGTCAGCA	116
<i>MX1</i>	NM_173940.2	F: AGAGCAAACCTGTACAGCCAAT R: CTCTGGTCCCGATAACAGC	127
<i>MX2</i>	NM_173941.2	F: CTACAAGTGCACAGGTGACAA R: CGGGCACAGAACACAAAAGG	127
<i>CMPK2</i>	XM_002691489.5	F: TCTTGCATCAGCCAGTGGAG R: CGACAACCCAGGCGATTTG	133
<i>BPNT1</i>	NM_001034539.2	F: CTGGTGCCTGATAACGCTCT R: GTGGGACTGGATGCCATGAT	97
<i>IFI35</i>	NM_001075462.2	F: GGGTGAGACCAAAGCTCTC R: AGAGCCGACATAGTCTGGGA	120
<i>TNFSF10</i>	NM_001319901.1	F: AAGGGTCTAAGAGGGTAGC R: TTCTTGGAGCCTGGAACCTGG	80
<i>TRIM38</i>	XM_010818483.3	F: CCCAAAGGGTCACACTGAACT R: AGCTCTGAACCCATTGAAGAGG	90
<i>GAPDH</i>	NM_001034034.2	F: TTCTACTGGCGCTGCCAAGG R: GATCCACAACAGACACGTTGGG	107
<i>ACTB</i>	NM_173979.3	F: CAGCAGATGTGGATCAGCAAGC R: AACGCAGCTAACAGTCCGCC	91
<i>RPL19</i>	NM_001040516.1	F: GAAAGGCAGGCATATGGGTA R: TCATCCTCCTCATCCAGGTT	86
<i>PPIA</i>	NM_178320.2	F: CATAAGGCTCTGGCATCTTGTC R: CAGGTGCTTGGCATCCAACC	108
<i>YWHAZ</i>	NM_174814.2	F: TGAAGCCATTGCTGAACCTG R: TCTCCTGGGTATCCGATGT	114
<i>RNF11</i>	NM_001077953.1	F: TCCGGGAGTGTGTGATCTGTATGAT R: GCAGGAGGGGCACGTGAAGG	131
<i>H3F3A</i>	NM_001014389.2	F: CATGGCTCGTACAAAGCAGA R: ACCAGCCTGTAACGATGAG	136
<i>SDHA</i> (new)	NM_174178.2	F: ACTTCACCGTTGATGGCAATAA R: CGCAGAAATCGCATCTGAAA	59

F = Forward, R = Reverse.

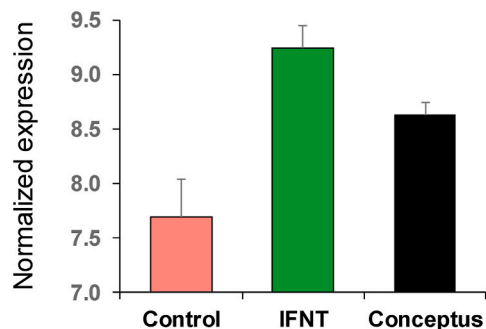
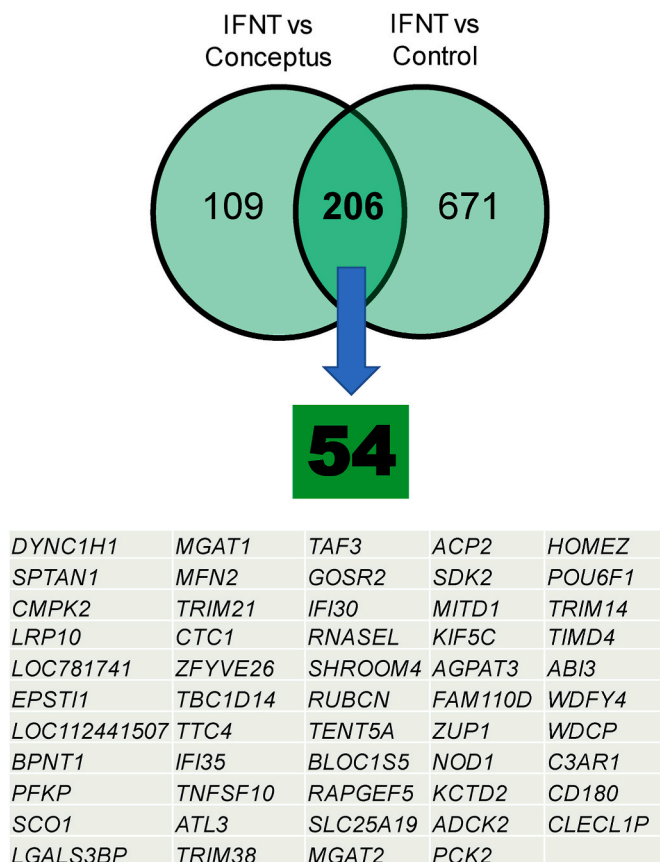
38.8 °C for 2 h before treatment with recombinant ovine IFNT (produced by G. Charpigny, INRAE, France).

### 2.3.2. Treatment of endometrial explants with IFNT

After 2 h culture of endometrial explants, the medium was fully aspirated and replaced with 1 mL of pre-warmed RPMI medium supplemented with 1% ABAM. Then, the explants were cultured in medium without (control) or with IFNT (1, 10, 100 ng/mL) for 6 h. In parallel, endometrial explants were cultured in medium containing 100 ng/mL IFNT for different time periods (15 min, 30 min, 1 h, 3 h, 6 h). Eight endometrial explants taken from the same region of each of the eight uteri were used for both dose- and time-dependent experiments in order to minimise variation. The 6 h culture duration was selected in the dose-dependent experiment based on previous studies from our group [13, 19]. For the time-dependent experiment, 100 ng/mL of IFNT was chosen on the basis of findings of an earlier study [20] in which 100 ng/mL of IFNT and a Day 15 long conceptus induced similar response in the uterine endometrium. In addition, Rizos et al. [14] reported that a conceptus of 20 mm length (long) produced about 10,000 IU/ml (equivalent to 100 ng/mL) IFNT in 24 h. At the end of the respective experiments, explants were snap frozen in liquid nitrogen and stored at –80 °C for RNA extraction.

### 2.3.3. Explant RNA extraction, cDNA synthesis and RT-qPCR

Total RNA extraction from endometrial explants was carried out according to a protocol described by Mathew et al. [19]. Briefly, total RNA was extracted from ~50 mg of endometrial explant tissue by homogenization using 1 mL of Trizol reagent (Invitrogen) and a Qiagen



**Fig. 1.** Comparison of differentially expressed genes (DEGs) upregulated in bovine endometrium between IFNT vs conceptus and IFNT vs control. The overlapping genes were subjected to a Boruta algorithm to select the top genes. The average expression for the selected top genes is shown in the bar graphs. Control (n = 10), 100 ng/mL IFNT (n = 10), conceptus (n = 33).

RNeasy Mini Kit (Qiagen) as per the manufacturer's instructions. The RNA quantity and purity (verified through  $A_{260}/A_{280}$  ratio) were determined using the Nano Drop 1000 (Thermo Fisher Scientific) and RNA quality was checked by the Agilent Bioanalyzer (Agilent Technologies). The mean  $A_{260}/A_{280}$  ratio was 2.0 (range: 1.9–2.1), and the mean RNA integrity number (RIN) was 7.3 (range: 6.6–8.4).

Then, 1 µg of explant mRNA was reverse transcribed into cDNA using the High-capacity cDNA Reverse Transcription Kit (Applied Biosystems, ThermoFisher Scientific) in a 20 µL reaction following the manufacturer's instruction, the cDNA was diluted 1:10 with distilled water and 5.0 µL was used in each RT-qPCR. The primers of the target genes used in RT-qPCR are listed in Table 1. The RT-qPCR reactions were carried out using the Roche SYBR Green RT-qPCR master mix kit (Roche Diagnostics Ltd) and the Applied Biosystems 7500 Real-Time PCR system

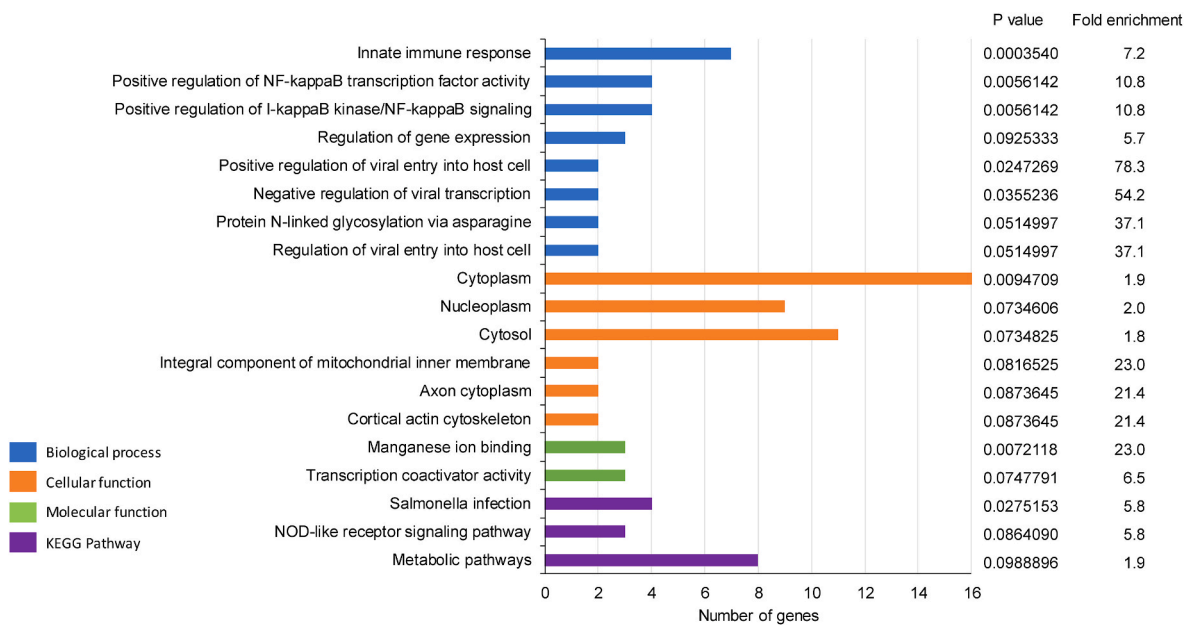


Fig. 2. Classification of 54 interferon tau-induced genes into functional categories based on the analysis of GO terms and KEGG pathways.

(ThermoFisher Scientific) following the manufacturer's recommendations, in a 20ul reaction containing 300pM final concentration of the forward and reverse primers. The RT-qPCR thermal cycler settings for all reactions consisted of an initial temperature of 95 °C for 10 min, followed by 40 PCR cycles consisting of melting at 95 °C for 15 s and annealing and extension at 60 °C for 1 min. A dissociation analysis was included for each primer pair to evaluate primer specificity for the target sequence. The PCR primer amplification efficiencies (E) for each primer pair was calculated using a serial dilution of cDNA (1:4 over 7 points) and shown to lie between 90% and 110%.

The stability of eight potential reference genes was assessed using the geNorm [29] function within the qBASE + analysis package (Biogazelle, Zwijnaarde, Belgium). The reference genes H3 histone family 3A (*H3F3A*) and tyrosine 3-monooxygenase/tryptophan 5-monooxygenase activation protein zeta (*YWHAZ*) were shown to be the most stably expressed and were subsequently used to normalise the data. Calibrated normalized relative gene expression values (CNRQ) were calculated for all samples using the qBASE + software.

#### 2.4. Statistical analysis

The qBASE + Stat wizard () was used for statistical analysis of the data. All values are presented as mean  $\pm$  standard error mean of variance (SEM). One-way analysis of variance (ANOVA) followed by Tukey's *post-hoc* test was applied to compare the mean differences among the treatment groups. The treatment effect was considered statistically significant at  $P < 0.05$ .

### 3. Results

#### 3.1. Selection of candidate genes

Transcriptome analysis results revealed that IFNT upregulated 877 and 315 transcripts compared to control and conceptus, respectively (Fig. 1 and Supplementary Tables S1–2). Among the 877 genes upregulated by IFNT compared to control, well-known classical genes (*ISG15*, *OAS1*, *MX1* and *MX2*) were not differentially expressed between IFNT and conceptus group (Supplementary Fig. 2). A total of 206 transcripts were commonly regulated by IFNT. From these overlapped 206 differentially expressed genes (DEGs), 54 genes were identified by the Boruta algorithm as the main endometrial genes upregulated by IFNT.

Gene ontology (GO) analysis of these 54 ISGs revealed eight enriched biological processes among which the top 3 categories concerned innate immune response (7 genes), positive regulation of NF-kappaB transcription factor activity (4 genes) and positive regulation of I-kappa B kinase/NF-kappaB signalling (4 genes) (Fig. 2 and Supplementary Table S3). The enriched cellular components (CC) and molecular functions (MF) associated with these selected genes were cytoplasm (16 genes) and nucleoplasm (9 genes), and manganese ion binding (3 genes) and transcription coactivator activity (3 genes), respectively. Furthermore, KEGG pathway analysis identified three enriched pathways including salmonella infection (4 genes), NOD-like receptor signalling pathway (3 genes) and metabolic pathways (8 genes). Furthermore, we obtained a protein-protein interaction (PPI) network (Fig. 3) composed of 52 nodes and 102 edges (expected number of edges: 55) with average node degree 3.92, and local clustering co-efficient 0.386. The network analysis identified significantly more interactions than expected (PPI enrichment P value: 7.75e-09).

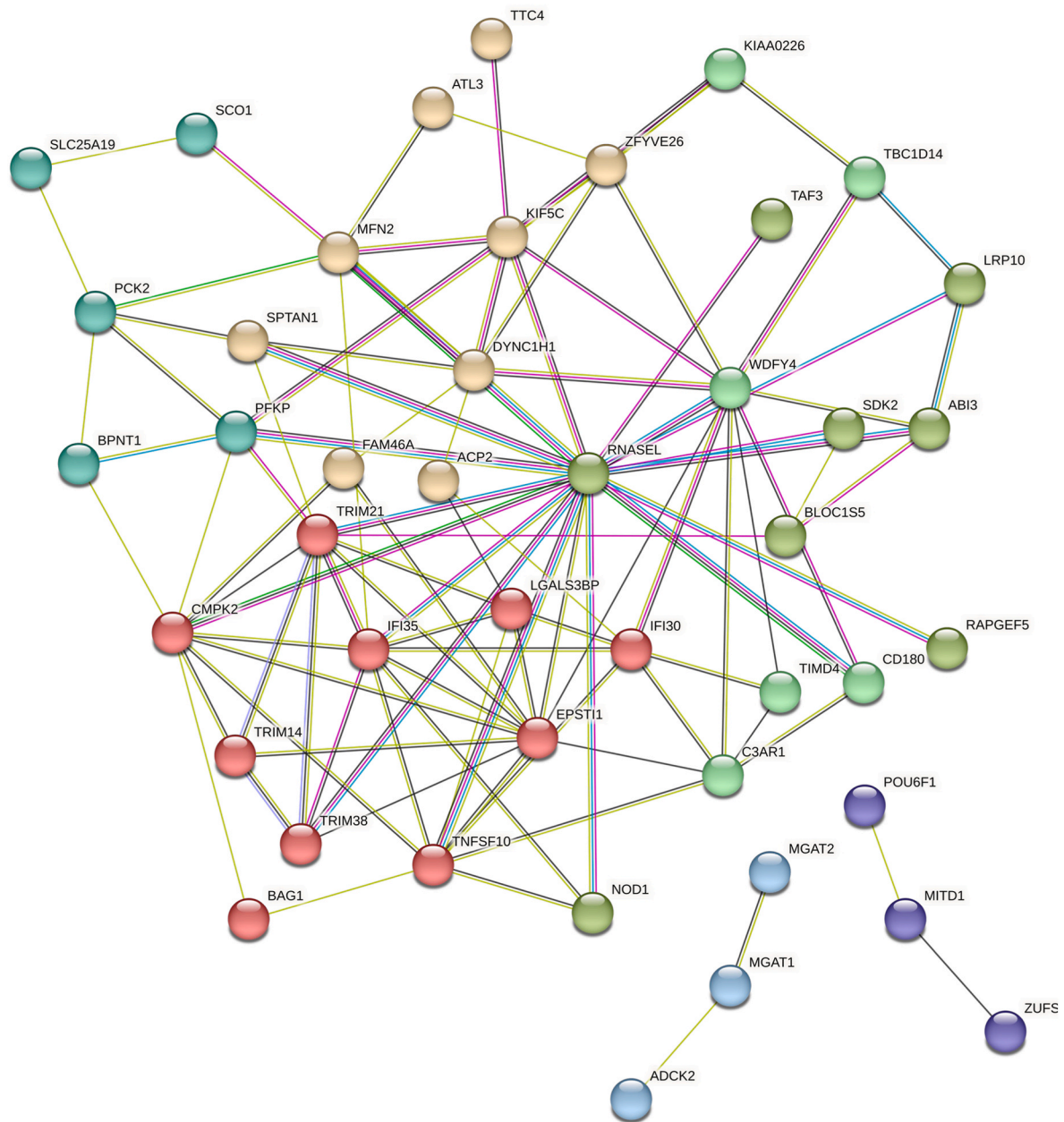
From 54 ISGs, we further selected five genes (*CMPK2*, *BPNT1*, *IFI35*, *TNFSF10* and *TRIM38*), based on their increased expression in the endometrium in response to IFNT compared to the control group ( $P < 0.05$ ; Fig. 4; Supplementary Table S4).

#### 3.2. Dose- and time-dependant response of the endometrium to IFNT

The well-known classical ISGs (*ISG15*, *OAS1*, *MX1* and *MX2*) were up-regulated ( $P < 0.05$ ) in the endometrial explants by 1 ng/mL of IFNT, and the degree of the up-regulation was increased at higher concentrations (10 and 100 ng/mL) ( $P < 0.05$ , Fig. 5). On the other side, IFNT at 100 ng/mL stimulated ( $P < 0.05$ ) *ISG15* after 1 h incubation, while other classical ISGs (*OAS1*, *MX1* and *MX2*) were upregulated ( $P < 0.05$ ) in endometrial explants when cultured for 3 or 6 h, but not for shorter periods (15 min, 30 min, and 1 h,  $P > 0.05$ ).

Unlike the well-known classical ISGs, the selected ISGs (*CMPK2*, *BPNT1*, *IFI35*, *TNFSF10* and *TRIM38*) were upregulated only at higher concentrations of IFNT (10 and 100 ng/mL), but not by 1 ng/mL of IFNT (Fig. 6). In terms of time dependence, IFNT at 100 ng/mL stimulated ( $P < 0.05$ ) *CMPK2* after 1 h incubation; however, other selected ISGs (*BPNT1*, *IFI35*, *TNFSF10* and *TRIM38*) were only increased in endometrium when cultured for 3 or 6 h, but not shorter periods (15 min, 30 min, and 1 h ( $P > 0.05$ , Fig. 6).





**Fig. 3.** The protein-protein interaction network of 54 ISGs. Nodes represent proteins and lines represent protein-protein interactions. The minimum required interaction score was set at 0.150.

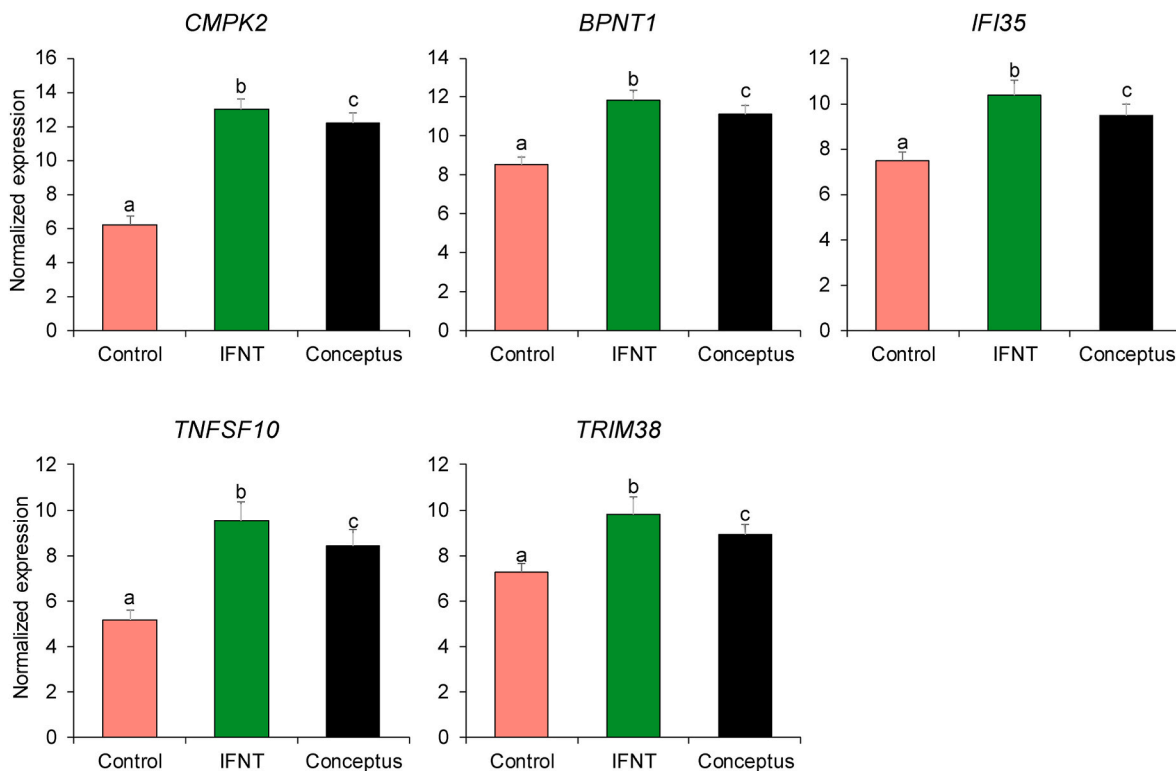
Nodes with same colour represent same cluster with shared functions. Nodes joined by lines indicate interactions. The source of interactions is curated databases (—), experimentally determined (—), gene neighbourhood (—), gene co-occurrence (—), text-mining (—), and co-expression (—). (For interpretation of the references to colour in this figure legend, the reader is referred to the Web version of this article.)

#### 4. Discussion

Improved understanding of the fundamentals of pregnancy recognition during the pre-implantation period, when a significant proportion of embryo loss occurs, could help to minimise early embryonic death and thereby improve reproductive efficiency in dairy cattle. The timely secretion of sufficient IFNT from the developing conceptus is crucial for MRP to occur. In the present study, we investigated the dose- and time-dependent effects of IFNT on the expression of key ISGs in bovine endometrium using an endometrial explant culture model. The major findings of this study are: (i) 54 ISGs responding to IFNT were identified in the endometrium through a bioinformatic approach (ii) the well-known classical ISGs (*ISG15*, *OAS1*, *MX1*, and *MX2*) transcripts were induced in the endometrium by lower concentrations of IFNT (1 ng/mL

and the intensity of the endometrial response to IFNT was increased at higher concentrations, (iii) higher concentrations (10 and 100 ng/mL) of IFNT were required to induce up-regulation of other selected ISGs (*CMPK2*, *BPNT1*, *IFI35*, *TNFSF10* and *TRIM38*) in the endometrium, and (iv) both well-known and other selected ISGs were up-regulated when endometrial explants were treated with IFNT for 3 or 6 h.

Endometrial explants have been successfully used to study the endometrial response to different stimuli under various pathophysiological conditions. For example, endometrial explants were used to investigate uterine responses to bacterial lipopolysaccharides [28, 30], bacterial peptidoglycan [31], blastocyst stage embryos [13], IFNT [19,20], conceptus [19,20], and bovine conceptus secretory proteins (bCSP) [32]. In the present study, we employed an endometrial explant model to elucidate dose- and time-dependent effects of IFNT on



**Fig. 4.** Normalized expression of five selected genes from the 54 genes in the bovine endometrium responding to IFNT and also to some degree to the conceptus (see Fig. 1). Different letters (a–c) above the bar in the same graph indicate significant difference at  $P < 0.05$ . Control ( $n = 10$ ), 100 ng/mL IFNT ( $n = 10$ ), conceptus ( $n = 33$ ).

endometrial expression of key ISGs. Endometrial explants collected from the late luteal phase can mimic the uterine milieu of early pregnancy and thus overcome limitations of studying conceptus (IFNT)-maternal interactions using an in vivo model. This is because explants maintain normal cellular and extracellular architecture which represents resident populations of endometrial cells that cannot be achieved with current 2D and 3D cell culture techniques.

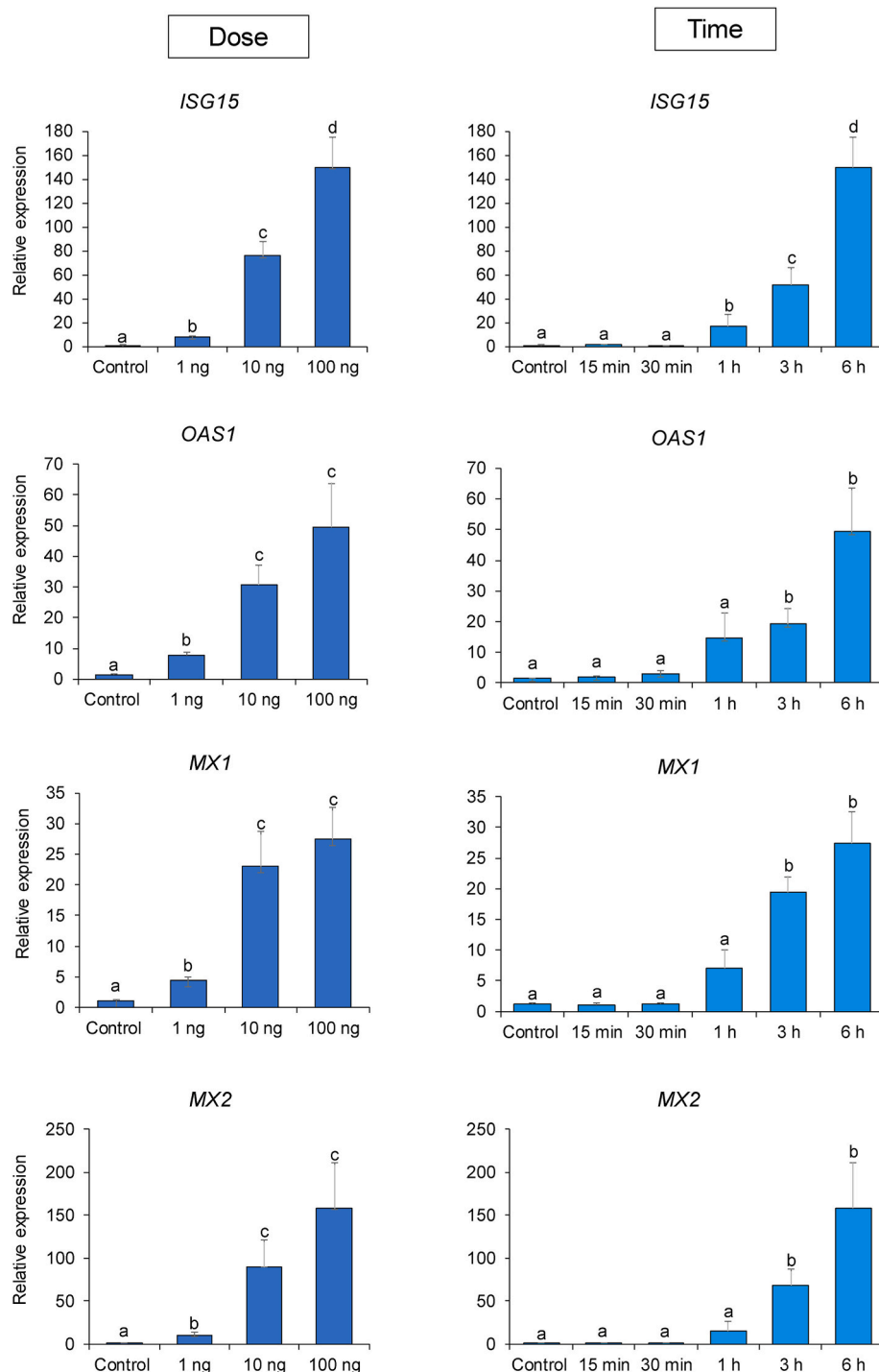
Secretion of IFNT by the developing bovine embryo has been reported as early as Day 7 from blastocyst-stage embryos [33–36]. More recently, it has been demonstrated that the endometrium responds to this blastocyst-derived IFNT by upregulating ISG expression as early as Day 7 [11–13]. Such endometrial response to IFNT is amplified during the MRP period around Day 16 resulting in a pregnancy establishment in cattle. Indeed, IFNT secreted from the developing embryo/conceptus binds with type 1 IFN alpha receptors (IFNAR1 and IFNAR2) of endometrial cells [37] and induces both ‘classical’ and ‘non-classical’ ISGs via activation of JAK-STAT signal transduction pathway [38], and mitogen-activated protein kinase (MAPK) and phosphatidylinositol 3-kinase (PI3K) pathway [39,40], respectively. These ISGs play pivotal roles in regulating uterine functions important for conceptus elongation, implantation and establishment of pregnancy [41–44]. In the last two decades, the well-known classical ISGs (*ISG15*, *OAS1*, *MX1* and *MX2*) have been extensively identified and reported in the endometrium during early pregnancy in cattle [11,13,18,45,46]. However, other ISGs associated with conceptus-derived IFNT during early pregnancy in cattle have not received significant attention.

In the present study, we applied a Boruta algorithm to determine genes capable of discriminating one group from the other according to their expression. This method identified 54 candidate genes induced by IFNT and also to some degree by the conceptus, but with a distinct expression between one group and the other. The GO term analysis showed that the majority of the genes were associated with the biological processes involved in regulation of innate immunity (Fig. 2). Apart

from its *anti-luteolytic* function, IFNT is also regarded as a potent immune regulator during pregnancy establishment in cattle [47] which involves both regulation of innate immune response and generation of adaptive/tolerogenic environment in the uterus [48,49]. Thus, activation of genes related to immune-related biological processes by IFNT might reflect the immune regulatory functions in the uterus during pregnancy establishment in cattle.

From these genes induced by IFNT, we further selected five genes (*CMPK2*, *BPNT1*, *IFI35*, *TNFSF10*, and *TRIM38*) based on their expression level compared to the control for examining the effect of IFNT on their expressions in endometrial explants in vitro. The PPI network analysis done with the 54 genes showed that our selected five genes are directly and/or indirectly associated with each other in which *IFI35*, *CMPK2*, *TRIM38* and *TNFSF10* formed more connections than *BPNT1* in the whole network (Fig. 3). Among these five genes, *CMPK2*, *IFI35* and *TRIM38* are recognized members of ISG family [50–53], while *BPNT1* is a member of the magnesium-dependant phosphomonoesterase family mostly involved in metabolic pathway [54], and *TNFSF10* is a member of tumour necrosis factor (TNF) ligand family involved in immune response [55]. Both, *BPNT1* and *TNFSF10* have been reported to be upregulated in the endometrium by IFNT and Day 15 conceptus during early pregnancy in cattle [20,22]. The specific role of these selected ISGs during early pregnancy in cattle is unknown and warrants further investigations.

Well-known ISGs (*ISG15*, *OAS1*, *MX1* and *MX2*) were induced in the endometrial explants by the lowest concentration of IFNT tested (1 ng/mL). Interestingly, higher concentrations of IFNT (10 and 100 ng/mL) were required to induce other selected ISGs (*CMPK2*, *BPNT1*, *IFI35*, *TNFSF10* and *TRIM38*), suggesting a dose-dependent effect of IFNT in modulating ISG expression in the endometrial explants. The dose-dependent effect of IFNT between well-known ISGs and selected ISGs could be due to their variations in the expression level (Figs. 5 and 6, Supplementary Table S5), where well-known classical ISGs were highly



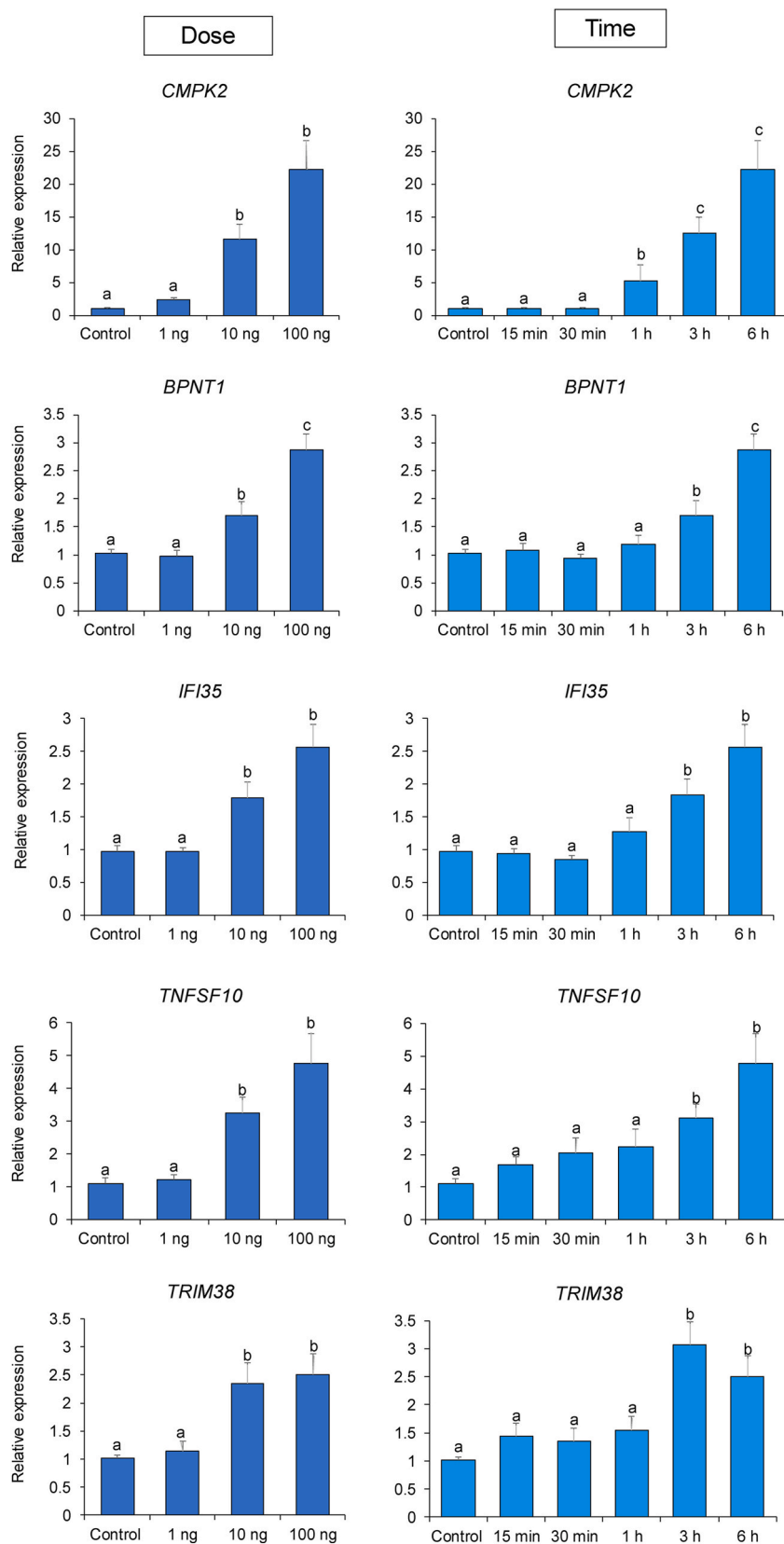
**Fig. 5.** Relative expression of well-known classical ISGs in endometrium induced by IFNT. Different letters (a–d) above the bar in the same graph indicate significant difference at  $P < 0.05$ . For time-dependent experiments, 100 ng/mL of IFNT was used. No. of replications = 8.

expressed. Indeed, *ISG15* expression can be induced in cultured luteal cells with as little as 0.1 ng/mL IFNT in sheep [56] and cattle [57]. Moreover, well-known classical ISGs (*ISG15*, *OAS1*, *MX1* and *MX2*) have been demonstrated to be induced in cultured bovine uterine epithelial cells in the presence of very low concentrations (0.1 ng/mL) of IFNT [12]. These results together with our findings support the concept that lower quantities of IFNT can induce well-known classical ISGs in the uterus, but an optimum amount of IFNT is required to induce a large scale of ISG expression in the uterus, which is likely associated with the amount of IFNT secreted from the developing conceptus. Consistent

with this, our group previously demonstrated that short conceptuses were unable to induce a response similar in the bovine endometrium to that induced by age-matched long conceptuses and IFNT (100 ng/mL) [20]. In addition, a strong positive relationship between conceptus length and IFNT secretion has been reported [14,58]; conceptuses should therefore reach an adequate size in order to produce sufficient IFNT to prevent luteolysis.

In this study, we showed that IFNT begins to act in the uterus by stimulating all studied ISGs in the first 3 h which supports the notion of an acute action of IFNT on the uterus. Unlike the dose-dependent effect





**Fig. 6.** Relative expression of five selected ISGs genes in endometrium induced by IFNT. Different letters (a–c) above the bar in the same graph indicate significant difference at  $P < 0.05$ . For time-dependent experiments, 100 ng/mL of IFNT was used. No. of replications = 8.

of IFNT, both well-known classical ISGs and selected ISGs found to be upregulated at the same time, suggesting that the action of IFNT is not only acute but it also induces broader changes in the uterus within this short period. Indeed, IFNT concentrations peak around Day 15–16 of pregnancy for MRP and continues thereafter over a period of week. While a sufficient IFNT level is required for pregnancy establishment [16], onset of its function in the uterus at the appropriate time is also important to prevent luteolysis. Interestingly, it is reported that conceptuses are capable of preventing luteolysis within a day or so of transfer in both cattle [21] and sheep [59]. The transfer of conceptuses from Day 10 to Day 16 of the oestrous cycle, but not on Day 17, can establish pregnancy in cattle [21]. Even transfer of 2 embryos (to maximise the luteotrophic or antiluteolytic effects of the conceptus) as late as Day 16 after estrus led to normal pregnancy but not thereafter. Similarly, it was also shown that removal of conceptuses at Day 17, 18 or 19 prolonged luteal lifespan compared to nonbred controls or when conceptuses were removed on Day 13 or 15 of pregnancy in cattle [60]. These findings clearly indicate an acute action of IFNT around Day 16 of pregnancy in cattle. In support of this concept of an acute action of IFNT, transcriptomic studies have shown that there is a dynamic temporal pattern to the endometrial gene expressions in cattle up to the time of maternal pregnancy recognition, however, such differences in the gene expression pattern of the endometrium of pregnant and cyclic heifers are little [45,61]. In contrast, from Day 15 [62] to Day 16 [45] onwards, significant endometrial changes occur, predominantly but not exclusively driven by IFNT. Similar data are also available in sheep [63].

## 5. Conclusion

In conclusion, through a bioinformatic approach we identified 54 ISGs potentially induced by IFNT in the endometrium around the period of maternal pregnancy recognition in cattle. Our findings from dose- and time-dependent experiments suggest that IFNT acts on the uterus in both a dose- and time-dependent manner in cattle and that timely exposure of the endometrium to sufficient IFNT is essential for appropriate signalling to ensure successful pregnancy establishment.

## CRedit authorship contribution statement

**A.K. Talukder:** Conceptualization, Methodology, Investigation, Formal analysis, Writing – original draft, preparation. **M.B. Rabaglino:** Methodology, Investigation, Formal analysis, Writing – review & editing. **J.A. Browne:** Methodology, Writing – review & editing. **G. Charpigny:** Methodology. **P. Lonergan:** Conceptualization, Methodology, Investigation, Supervision, Writing – review & editing, Funding acquisition.

## Declaration of competing interest

The authors declare no conflicts of interest.

## Acknowledgments

A. K. Talukder was funded by the Government of Ireland Post-doctoral Fellowship Programme from Irish Research Council (GOIPD/2021/46). M.B. Rabaglino was supported by the European Commission (H2020-MSCA-Individual Fellowship; Proposal 101021311).

## Appendix A. Supplementary data

Supplementary data to this article can be found online at <https://doi.org/10.1016/j.theriogenology.2023.07.033>.

## References

- [1] Sartori R, Bastos MR, Wiltbank MC. Factors affecting fertilisation and early embryo quality in single- and superovulated dairy cattle. *Reprod Fertil Dev* 2010;22:151–8.
- [2] Diskin MG, Waters SM, Parr MH, Kenny DA. Pregnancy losses in cattle: potential for improvement. *Reprod Fertil Dev* 2016;28:83–93.
- [3] Wiltbank MC, Baez GM, Garcia-Guerra A, Toledo MZ, Monteiro PL, Melo LF, et al. Pivotal periods for pregnancy loss during the first trimester of gestation in lactating dairy cows. *Theriogenology* 2016;86:239–53.
- [4] Berg DK, Ledgard A, Donnison M, McDonald R, Henderson HV, Meier S, et al. The first week following insemination is the period of major pregnancy failure in pasture-grazed dairy cows. *J Dairy Sci* 2022;105:9253–70.
- [5] Domingues RR, Andrade JPN, Cunha TO, Madureira G, Moallem U, Gomez-Leon V, et al. Is pregnancy loss initiated by embryonic death or luteal regression? Profiles of pregnancy-associated glycoproteins during elevated progesterone and pregnancy loss. *JDS Commun* 2023;4:149–54.
- [6] Gray CA, Burghardt RC, Johnson GA, Bazer FW, Spencer TE. Evidence that absence of endometrial gland secretions in uterine gland knockout ewes compromises conceptus survival and elongation. *Reproduction* 2002;124:289–300.
- [7] Flechon JE, Guillomot M, Charlier M, Flechon B, Martal J. Experimental studies on the elongation of the Ewe blastocyst. *Reprod Nutr Dev* 1986;26:1017–24.
- [8] Guillomot M. Cellular interactions during implantation in domestic ruminants. *J Reprod Fertil Suppl* 1995;49:39–51.
- [9] Spencer TE, Johnson GA, Bazer FW, Burghardt RC, Palmarini M. Pregnancy recognition and conceptus implantation in domestic ruminants: roles of progesterone, interferons and endogenous retroviruses. *Reprod Fertil Dev* 2007;19: 65–78.
- [10] Degrelle SA, Campion E, Cabau C, Piumi F, Reinaud P, Richard C, et al. Molecular evidence for a critical period in mural trophoblast development in bovine blastocysts. *Dev Biol* 2005;288:448–60.
- [11] Sponchiado M, Gomes NS, Fontes PK, Martins T, Del Collado M, Pastore AA, et al. Pre-hatching embryo-dependent and -independent programming of endometrial function in cattle. *PLoS One* 2017;12:e0175954.
- [12] Talukder AK, Yousef MS, Rashid MB, Awai K, Acosta TJ, Shimizu T, et al. Bovine embryo induces an anti-inflammatory response in uterine epithelial cells and immune cells in vitro: possible involvement of interferon tau as an intermediary. *J Reprod Dev* 2017;63:425–34.
- [13] Passaro C, Tutt D, Mathew DJ, Sanchez JM, Browne JA, Boe-Hansen GB, et al. Blastocyst-induced changes in the bovine endometrial transcriptome. *Reproduction* 2018;156:219–29.
- [14] Rizos D, Scully S, Kelly AK, Ealy AD, Moros R, Duffy P, et al. Effects of human chorionic gonadotrophin administration on day 5 after oestrus on corpus luteum characteristics, circulating progesterone and conceptus elongation in cattle. *Reprod Fertil Dev* 2012;24:472–81.
- [15] Spencer TE, Ing NH, Ott TL, Mayes JS, Becker WC, Watson GH, et al. Intrauterine injection of ovine interferon-tau alters oestrogen receptor and oxytocin receptor expression in the endometrium of cyclic ewes. *J Mol Endocrinol* 1995;15:203–20.
- [16] Forde N, Lonergan P. Interferon-tau and fertility in ruminants. *Reproduction* 2017; 154:F33–43.
- [17] Bai H, Kawahara M, Takahashi M, Imakawa K. Recent progress of interferon-tau research and potential direction beyond pregnancy recognition. *J Reprod Dev* 2022;68:299–306.
- [18] Passaro C, Tutt D, Bages-Arnal S, Maicas C, Laguna-Barrasa R, Gutierrez-Adan A, et al. Global transcriptomic response of bovine endometrium to blastocyst-stage embryos. *Reproduction* 2019;158:223–35.
- [19] Mathew DJ, Sanchez JM, Passaro C, Charpigny G, Behura SK, Spencer TE, et al. Interferon tau-dependent and independent effects of the bovine conceptus on the endometrial transcriptome. *Biol Reprod* 2019;100:365–80.
- [20] Sanchez JM, Mathew DJ, Behura SK, Passaro C, Charpigny G, Butler ST, et al. Bovine endometrium responds differentially to age-matched short and long conceptuses. *Biol Reprod* 2019;101:26–39.
- [21] Betteridge KJ, Eaglesome MD, Randall GC, Mitchell D. Collection, description and transfer of embryos from cattle 10–16 days after oestrus. *J Reprod Fertil* 1980;59: 205–16.
- [22] O'Callaghan E, Sanchez JM, Rabaglino MB, McDonald M, Liu H, Spencer TE, et al. Influence of sire fertility status on conceptus-induced transcriptomic response of the bovine endometrium. *Front Cell Dev Biol* 2022;10:950443.
- [23] Leek JT, Johnson WE, Parker HS, Jaffe AE, Storey JD. The sva package for removing batch effects and other unwanted variation in high-throughput experiments. *Bioinformatics* 2012;28:882–3.
- [24] Love MI, Huber W, Anders S. Moderated estimation of fold change and dispersion for RNA-seq data with DESeq2. *Genome Biol* 2014;15:550.
- [25] Kursa MB, Rudnicki WR. Feature selection with the Boruta package. *J Stat Software* 2010;36:1–13.
- [26] Huang da W, Sherman BT, Lempicki RA. Systematic and integrative analysis of large gene lists using DAVID bioinformatics resources. *Nat Protoc* 2009;4:44–57.
- [27] Ireland JJ, Murphee RL, Coulson PB. Accuracy of predicting stages of bovine oestrous cycle by gross appearance of the corpus luteum. *J Dairy Sci* 1980;63: 155–60.
- [28] Borges AM, Healey GD, Sheldon IM. Explants of intact endometrium to model bovine innate immunity and inflammation ex vivo. *Am J Reprod Immunol* 2012; 67:526–39.
- [29] Vandesompele J, De Preter K, Pattyn F, Poppe B, Van Roy N, De Paeppe A, et al. Accurate normalization of real-time quantitative RT-PCR data by geometric averaging of multiple internal control genes. *Genome Biol* 2002;3: RESEARCH0034.

- [30] Healy LL, Cronin JG, Sheldon IM. Endometrial cells sense and react to tissue damage during infection of the bovine endometrium via interleukin 1. *Sci Rep* 2014;4:7060.
- [31] Zinnah MA, Marey MA, Akhtar I, Elesh IF, Matsuno Y, Elweza AE, et al. Peptidoglycan disrupts early embryo-maternal crosstalk via suppression of ISGs expression induced by interferon-tau in the bovine endometrium. *Biochem Biophys Res Commun* 2020;532:101–7.
- [32] Gross TS, Plante C, Thatcher WW, Hansen PJ, Helmer SD, Putney DJ. Secretory proteins of the bovine conceptus alter endometrial prostaglandin and protein secretion in vitro. *Biol Reprod* 1988;39:977–87.
- [33] Kubisch HM, Larson MA, Roberts RM. Relationship between age of blastocyst formation and interferon- $\tau$  secretion by in vitro-derived bovine embryos. *Mol Reprod Dev* 1998;49:254–60.
- [34] Larson Mak K, Kubisch HM, Roberts RM. Sexual dimorphism among bovine embryos in their ability to make the transition to expanded blastocyst and in the expression of the signaling molecule IFN-tau. *Proc Natl Acad Sci USA* 2001;98:9677–82.
- [35] Kubisch HM, Sirisathien S, Bosch P, Hernandez-Fonseca HJ, Clements G, Liukkonen JR, et al. Effects of developmental stage, embryonic interferon-tau secretion and recipient synchrony on pregnancy rate after transfer of in vitro produced bovine blastocysts. *Reprod Domest Anim* 2004;39:120–4.
- [36] Johnson KM, Alvarez X, Borkhsenius ON, Kubisch HM. Nuclear and cytoplasmic localization of interferon- $\tau$  in in vitro-produced bovine blastocysts. *Reprod Nutr Dev* 2006;46:97–104.
- [37] Li J, Roberts RM. Interferon-tau and interferon-alpha interact with the same receptors in bovine endometrium. Use of a readily iodinated form of recombinant interferon-tau for binding studies. *J Biol Chem* 1994;269:13544–50.
- [38] Choi Y, Johnson GA, Burghardt RC, Berghman LR, Joyce MM, Taylor KM, et al. Interferon regulatory factor-two restricts expression of interferon-stimulated genes to the endometrial stroma and glandular epithelium of the ovine uterus. *Biol Reprod* 2001;65:1038–49.
- [39] Platanius LC. Mechanisms of type-I-and type-II-interferon-mediated signalling. *Nat Rev Immunol* 2005;5:375–86.
- [40] Bazer FW, Thatcher WW. Chronically the discovery of interferon tau. *Reproduction* 2017;154:F11.
- [41] Hansen T, Austin K, Perry D, Pru J, Teixeira M, Johnson G. Mechanism of action of interferon-tau in the uterus during early pregnancy. *J Reprod Fertil Suppl* 1999;54:329–39.
- [42] Spencer T, Sandra O, Wolf E. Genes involved in conceptus-endometrial interactions in ruminants: insights from reductionism and thoughts on holistic approaches. *Reproduction* 2008;135:165–79.
- [43] Bazer F, Spencer T, Johnson G. Interferons and uterine receptivity. *Semin Reprod Med* 2009;27:90–102.
- [44] Hansen T, Henkes L, Ashley R, Bott R, Antoniazzi A, Han H. Endocrine actions of interferon-tau in ruminants. *Soc Reprod Fertil Suppl* 2010;67:325–40.
- [45] Forde N, Carter F, Spencer T, Bazer F, Sandra O, Mansouri-Attia N, et al. Conceptus-induced changes in the endometrial transcriptome: how soon does the cow know she is pregnant? *Biol Reprod* 2011;85:144–56.
- [46] Bauersachs S, Ulbrich SE, Gross K, Schmidt SE, Meyer HH, Wenigerkind H, et al. Embryo-induced transcriptome changes in bovine endometrium reveal species-specific and common molecular markers of uterine receptivity. *Reproduction* 2006;132:319–31.
- [47] Bai H, Sakurai T, Fujiwara H, Ideta A, Aoyagi Y, Godkin JD, et al. Functions of interferon tau as an immunological regulator for establishment of pregnancy. *Reprod Med Biol* 2012;11:109–16.
- [48] Vasudevan S, Kamat MM, Walusimbi SS, Pate JL, Ott TL. Effects of early pregnancy on uterine lymphocytes and endometrial expression of immune-regulatory molecules in dairy heifers. *Biol Reprod* 2017;97:104–18.
- [49] Walker CG, Meier S, Littlejohn MD, Lehnert K, Roche JR, Mitchell MD. Modulation of the maternal immune system by the pre-implantation embryo. *BMC Genom* 2010;11:474.
- [50] Hu MM, Shu HB. Multifaceted roles of TRIM38 in innate immune and inflammatory responses. *Cell Mol Immunol* 2017;14:331–8.
- [51] De Masi R, Orlando S, Bagordo F, Grassi T. IFP35 is a relevant factor in innate immunity, multiple sclerosis, and other chronic inflammatory diseases: a review. *Biology* 2021;10.
- [52] Liu W, Chen B, Chen L, Yao J, Liu J, Kuang M, et al. Identification of fish CMPK2 as an interferon stimulated gene against SVCV infection. *Fish Shellfish Immunol* 2019;92:125–32.
- [53] Lai JH, Wu DW, Wu CH, Hung LF, Huang CY, Ka SM, et al. Mitochondrial CMPK2 mediates immunomodulatory and antiviral activities through IFN-dependent and IFN-independent pathways. *iScience* 2021;24:102498.
- [54] Spiegelberg BD, Dela Cruz J, Law TH, York JD. Alteration of lithium pharmacology through manipulation of phosphoadenosine phosphate metabolism. *J Biol Chem* 2005;280:5400–5.
- [55] Collette Y, Gilles A, Pontarotti P, Olive D. A co-evolution perspective of the TNFSF and TNFRSF families in the immune system. *Trends Immunol* 2003;24:387–94.
- [56] Antoniazzi A, Webb B, Romero J, Ashley R, Smirnova N, Henkes L, et al. Endocrine delivery of interferon tau protects the corpus luteum from prostaglandin F2 alpha-induced luteolysis in ewes. *Biol Reprod* 2013;88:144.
- [57] Hansen T, Bott R, Romero J, Antoniazzi A, Davis J. Corpus luteum and early pregnancy in ruminants. In: Meidan R, editor. *The life cycle of the corpus luteum*. Springer International Publishing Switzerland; 2017. p. 205–25.
- [58] Kerbler T, Buhr M, Jordan L, Leslie K, Walton J. Relationship between maternal plasma progesterone concentration and interferon-tau synthesis by the conceptus in cattle. *Theriogenology* 1997;47:703–14.
- [59] Moor R, Rowson L. Local maintenance of the corpus luteum in sheep with embryos transferred to various isolated portions of the uterus. *J Reprod Fertil* 1966;12:539–50.
- [60] Northey D, French L. Effect of embryo removal and intrauterine infusion of embryonic homogenates on the lifespan of the bovine corpus luteum. *J Anim Sci* 1980;50:298–302.
- [61] Forde N, Duffy G, McGettigan P, Browne J, Mehta J, Kelly A, et al. Evidence for an early endometrial response to pregnancy in cattle: both dependent upon and independent of interferon tau. *Physiol Genom* 2012;44:799–810.
- [62] Bauersachs S, Ulbrich S, Reichenbach H, Reichenbach M, Buttner M, Meyer H, et al. Comparison of the effects of early pregnancy with human interferon, alpha 2 (IFNA2), on gene expression in bovine endometrium. *Biol Reprod* 2012;86:46.
- [63] Brooks K, Burns G, Spencer T. Conceptus elongation in ruminants: roles of progesterone, prostaglandin, interferon tau and cortisol. *J Anim Sci Biotechnol* 2014;5:53.