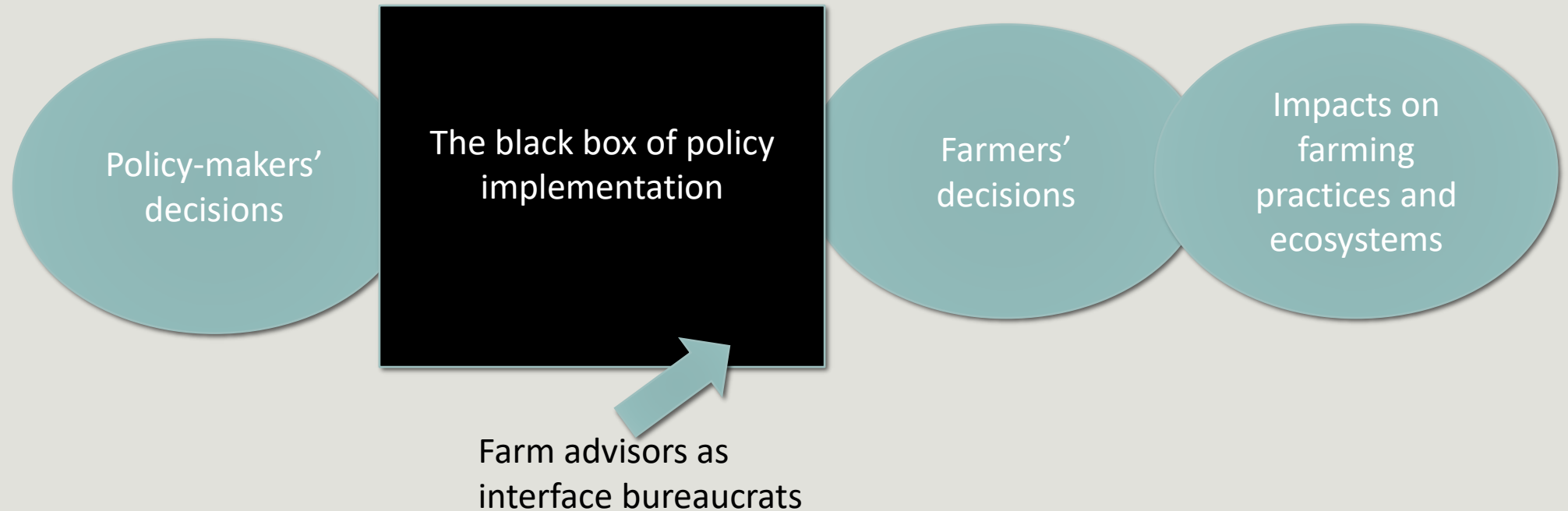


The everyday work of farm advisors as interface bureaucrats in greening French agricultural policies

FLORIANE CLEMENT, GAEL PLUMECOCQ & PIERRE LABARTHE

ESEE CONFERENCE, TOULOUSE, 10TH JULY 2023

The greening of agricultural policies



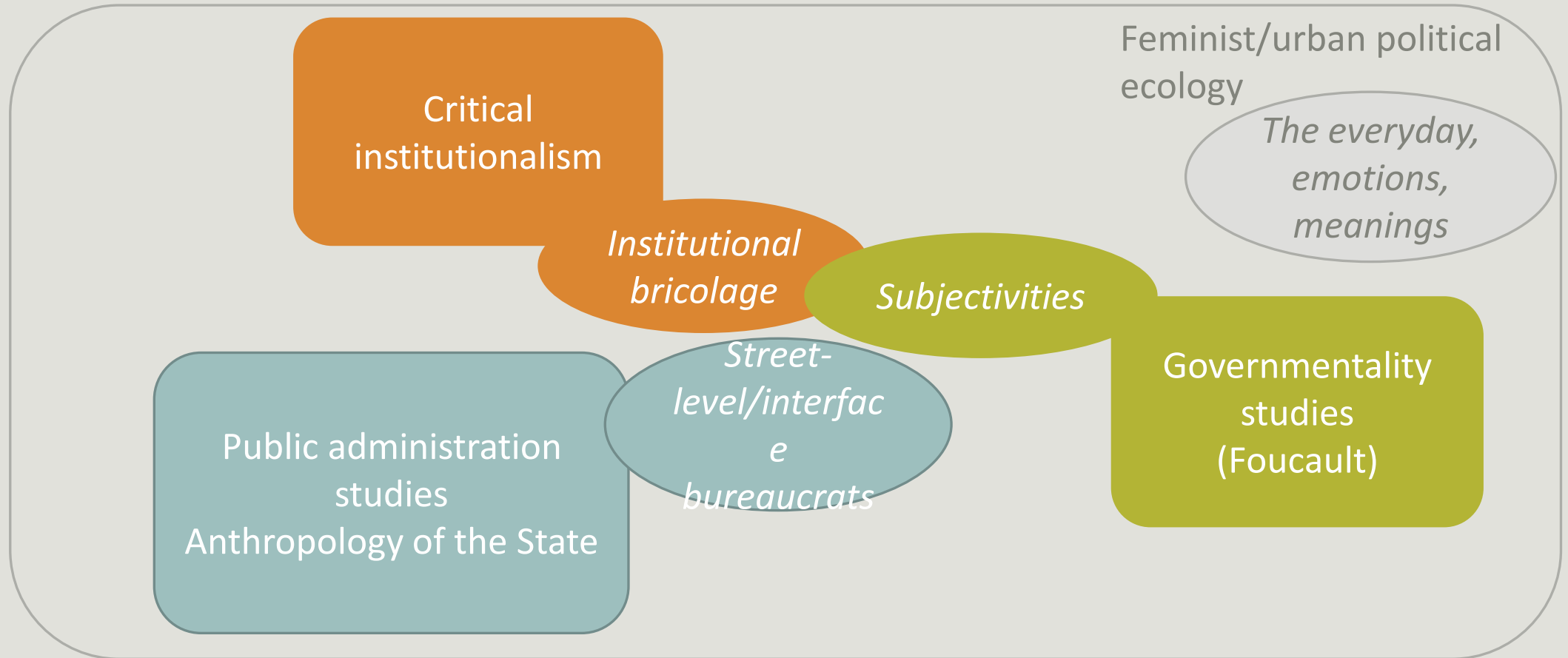
Research questions

- How do farm advisors, as interface bureaucrats, manage possible tensions resulting from the greening of agricultural policies?
- How do these tensions influence their practices and policy implementation?

Case study of two policy instruments: the GIEE and 30,000 farms



Theoretical assemblage



GIEE & 30,000 farms in Occitanie region

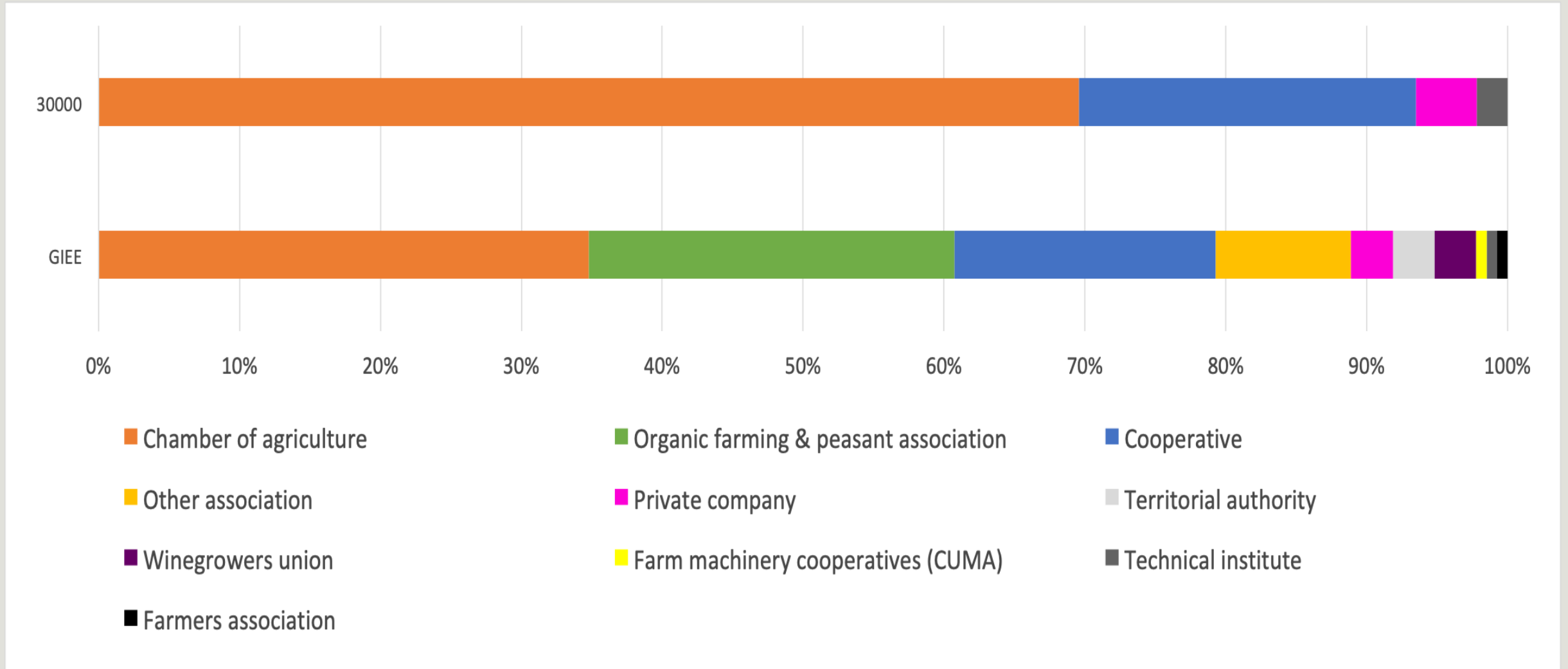
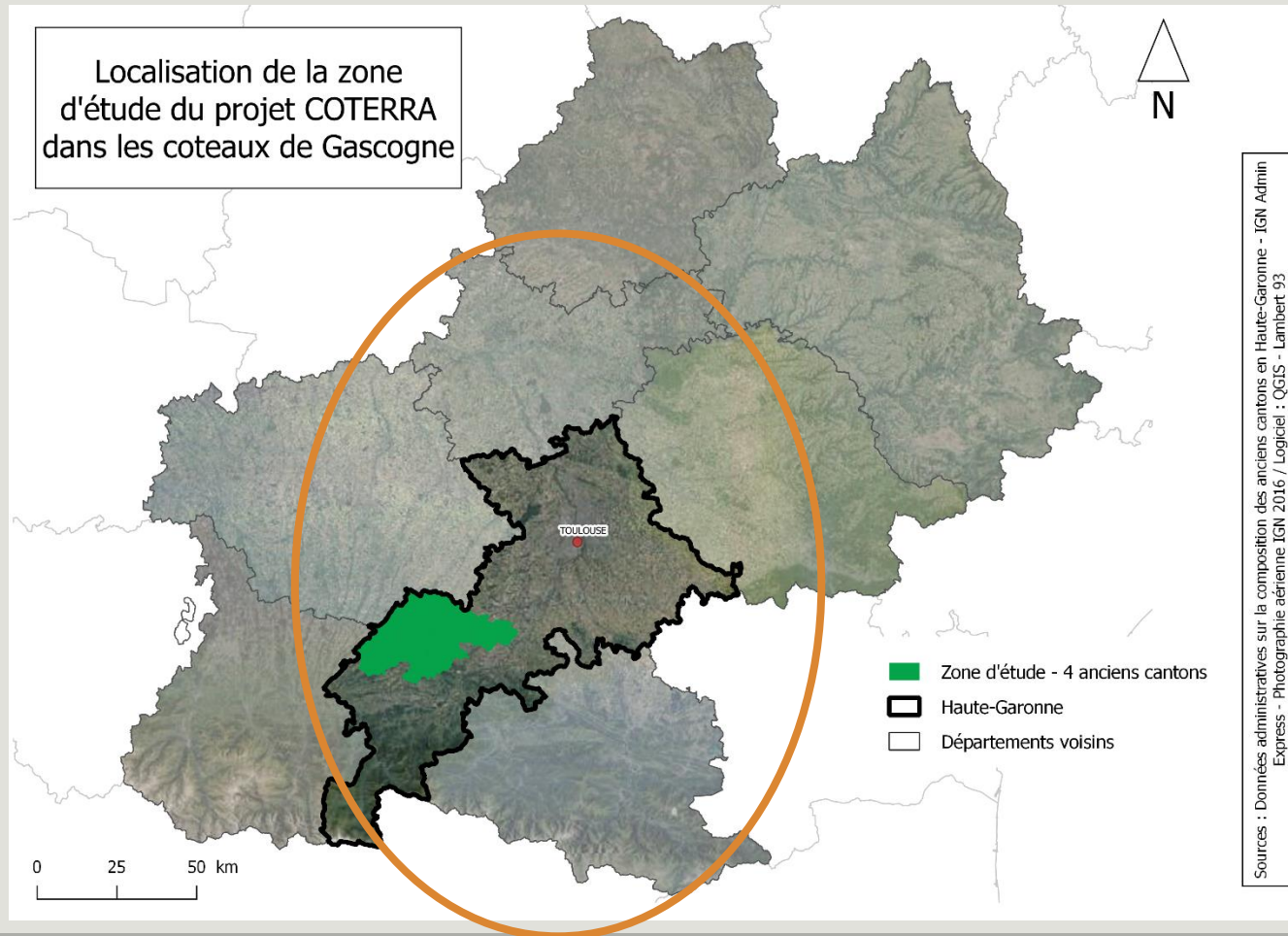


Fig. 1. Distribution of the types of structures facilitating the groups for each scheme in Occitanie (2021 data, DRAAF Occitanie)

Methodology



Semi-structured interviews on the perceptions of agroecological policies

Debates based on film screenings on agricultural extension and policy instruments

Semi-structured interviews on the facilitation of GIEE and 30,000 farms

Methodology

Table 1. Number of informants/participants across research stages and actors' categories

Research stage (related project name)	Farm advisors		Officers from agricultural organizations		State functionaries	
	Female	Male	Female	Male	Female	Male
Round 1 of interviews (COTERRA)	3	2	1	1	0	5
Local public debate (COTERRA)	3	4	/	/	/	/
Regional public debate (COTERRA)	1	5	1	1	2	1
Round 2 of interviews (TERRAE)	6	4	1	1	/	/
Total	12	18	3	3	2	2

Results

- Navigate across organisational strategies
- Give meaning by performing multiple subjectivities
- Maintain relationships through institutional bricolage

Different organisational strategies

- Re-affirm their authority as a leader of agricultural extension
- « ... *create groups to create groups, just because there is funding or because we need to go, to show that...* » (interview, early career female advisor, Chamber of Agriculture, March 2021)
- Secure funding
- Keep a form of legitimacy on technical expertise and on new challenges
- Support market strategies
- « *it was for us a source of farmers, which we can then make certified HEV and start developing products – it was our target* » (conseillère de coopérative viticole, 2021)
- Make territories governable
- Identify new farmer leaders

New opportunities to create meaning?

Bring a vision

«*The vision of the GIEE policy scheme? This scheme, in itself, does not necessarily convey any specific vision of agroecology, we have to bring it.* » (conseillère, chambre d'agriculture)

Performing multiple subjectivities and related tensions

- Technical expert
- Supporting farmers to develop « *a soul and a will for agroecology e* »
- Transformative agent

Maintaining relationships

« If the group is not active, if it is not close-knit, well, for the facilitator, it is a hell to try to implement anything »

(female advisor, chamber of agriculture, January 2021)

- Agroecology, a shared goal to work together?
- Bricolage work to navigate between their own values, those of farmers, administrative rules and organisational strategies
- Continuous efforts to give farmers autonomy and get them 'participate' while maintaining group dynamics

Discussion and conclusion

- Relevance to analyse the banal practices of interface bureaucrats in policy implementation
- Farm advisors face multiple tensions to keep meaning, accommodate different values et visions and maintain relations with farmers: they perform multiple subjectivities and try different forms of institutional bricolage, implying high level of affective labour
- Specific case of organisational and participatory instruments
- Further research: gendered subjectivities and social justice issues

Acknowledgments

La Fondation de France & Occitanie Region for financial support

All people who participated to this project

Diane Esquerré & Anouk Leclerc for their support in data collection

Sam Staddon for inspiring this research focus

Bimbika Sijapati Basnett and Amélie Gonçalves for their useful feedbacks on a draft paper

