



HAL
open science

CONGRES MONDIAL D'AGROFORESTERIE
Agroecological transitions at the territorial scale: a
sociological perspective

Claire Lamine

► **To cite this version:**

Claire Lamine. CONGRES MONDIAL D'AGROFORESTERIE Agroecological transitions at the territorial scale: a sociological perspective. Congrès Mondial d'Agroforesterie, Jul 2022, QUEBEC, Canada. hal-04234173

HAL Id: hal-04234173

<https://hal.inrae.fr/hal-04234173>

Submitted on 9 Oct 2023

HAL is a multi-disciplinary open access archive for the deposit and dissemination of scientific research documents, whether they are published or not. The documents may come from teaching and research institutions in France or abroad, or from public or private research centers.

L'archive ouverte pluridisciplinaire **HAL**, est destinée au dépôt et à la diffusion de documents scientifiques de niveau recherche, publiés ou non, émanant des établissements d'enseignement et de recherche français ou étrangers, des laboratoires publics ou privés.

CONGRES MONDIAL D'AGROFORESTERIE

Agroecological transitions at the territorial scale: a
sociological perspective

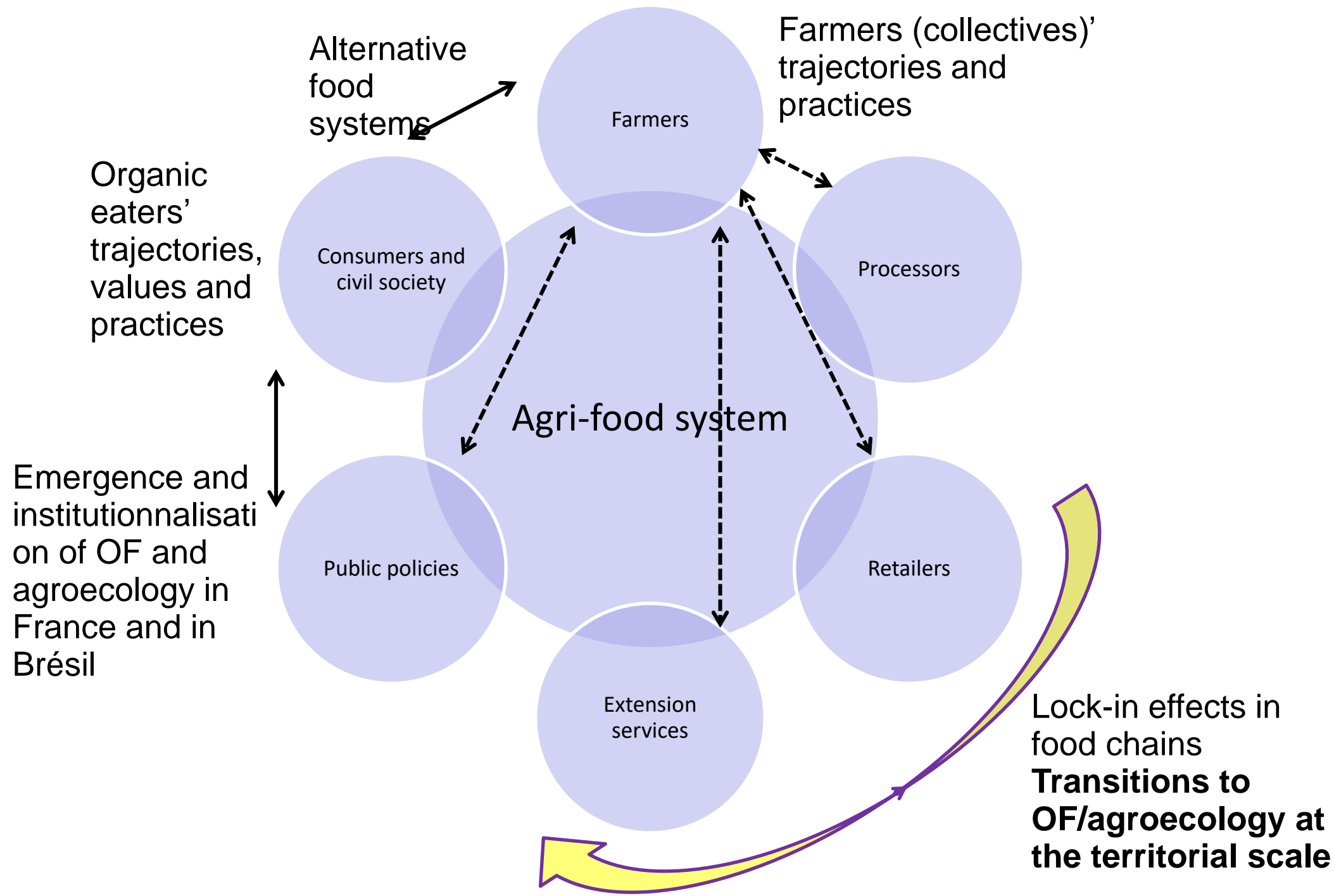
Claire Lamine, sociologue, INRAE-Ecodéveloppement

Ecosyat
Metabio



Coordination by **INRAE**

Research trajectory

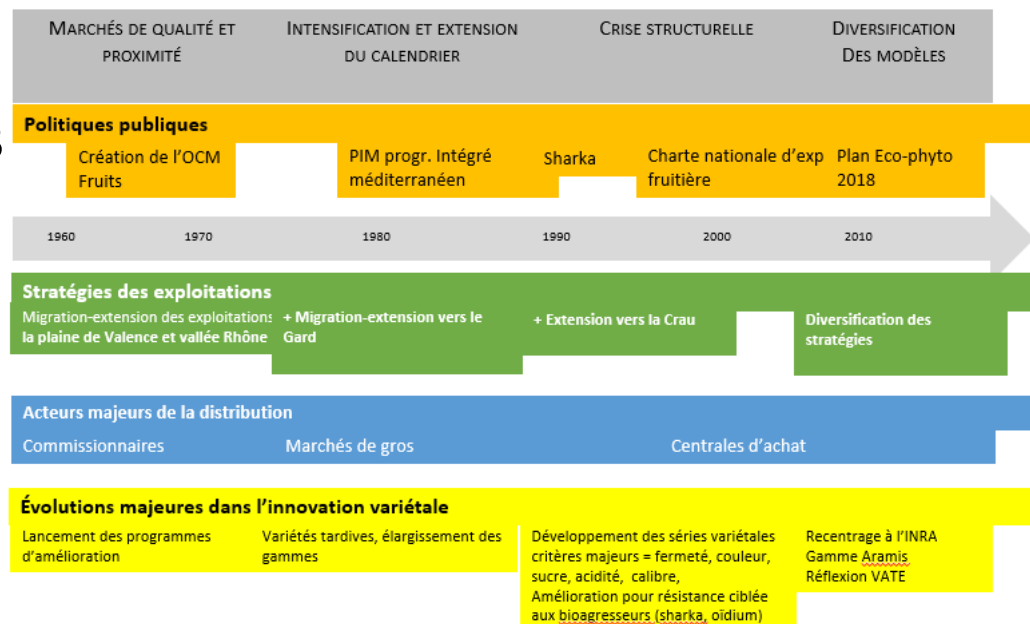
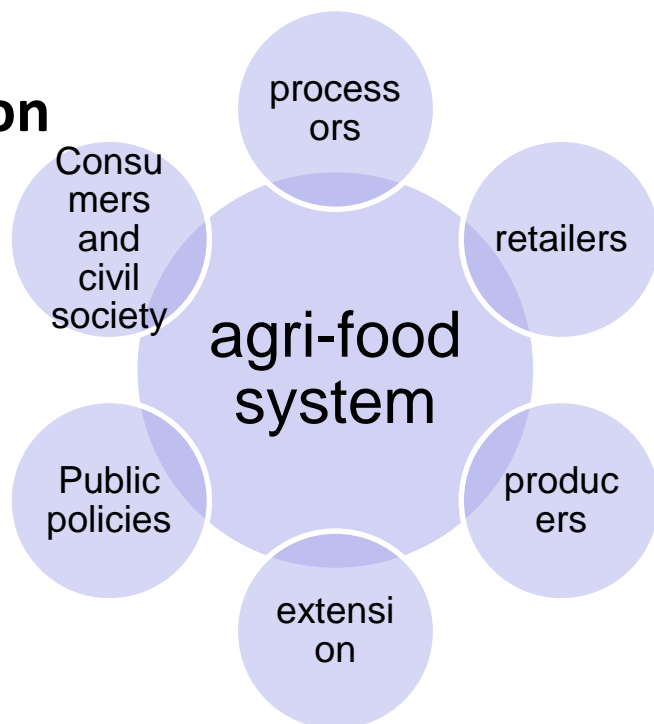


Usually sociologists are asked what are farmers' motivations for (transition) adoption of new techniques or models?

... from the scale of agricultural practices to that of the wider agrifood system

Lock-ins and path-dependency effects

Intensification trajectories



Fruit industry in France (Lamine et al. 2015)

-> need to combine a socio-historical analysis of lock-in mechanisms and a comprehensive analysis of **change mechanisms** at both scales of farmers and agrifood system

A territorial approach to agrifood systems agroecological transitions

The territorial scale ...

- ✓ Allows to consider food systems' initiatives, components and actors in their diversity



- ✓ Scale of direct interactions between ecological and social processes, and at which these could be articulated in order to support the reconnection of agriculture, food, environment, and health
- ✓ Scale of shared responsibility and mutual commitments towards a common future/community of fate

A case study: Southern Ardèche, France



More focused study

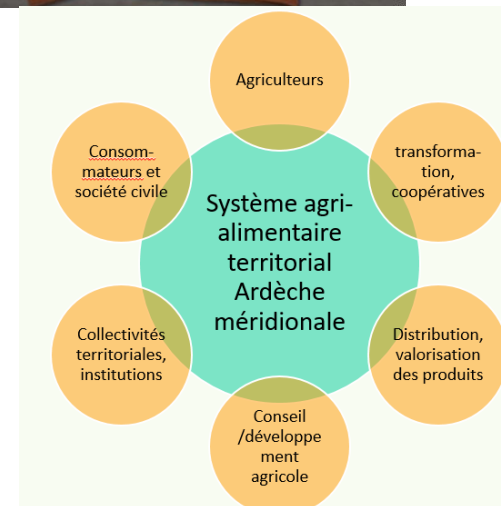


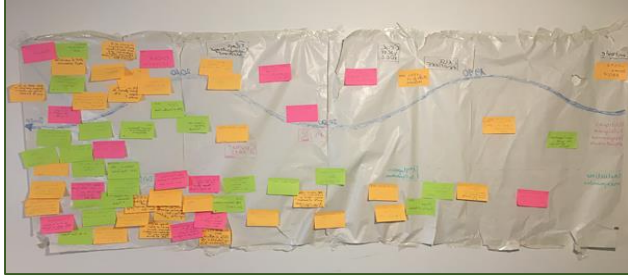
Photos site assterr and France bleu

- montaneous region
- a diversified agriculture with some niche productions (chestnut, wine)
- the decline of a formerly successful sector (fruit production) for “lack of competitiveness”



A multi-actors action-research in order to build a collective understanding of transition mechanisms



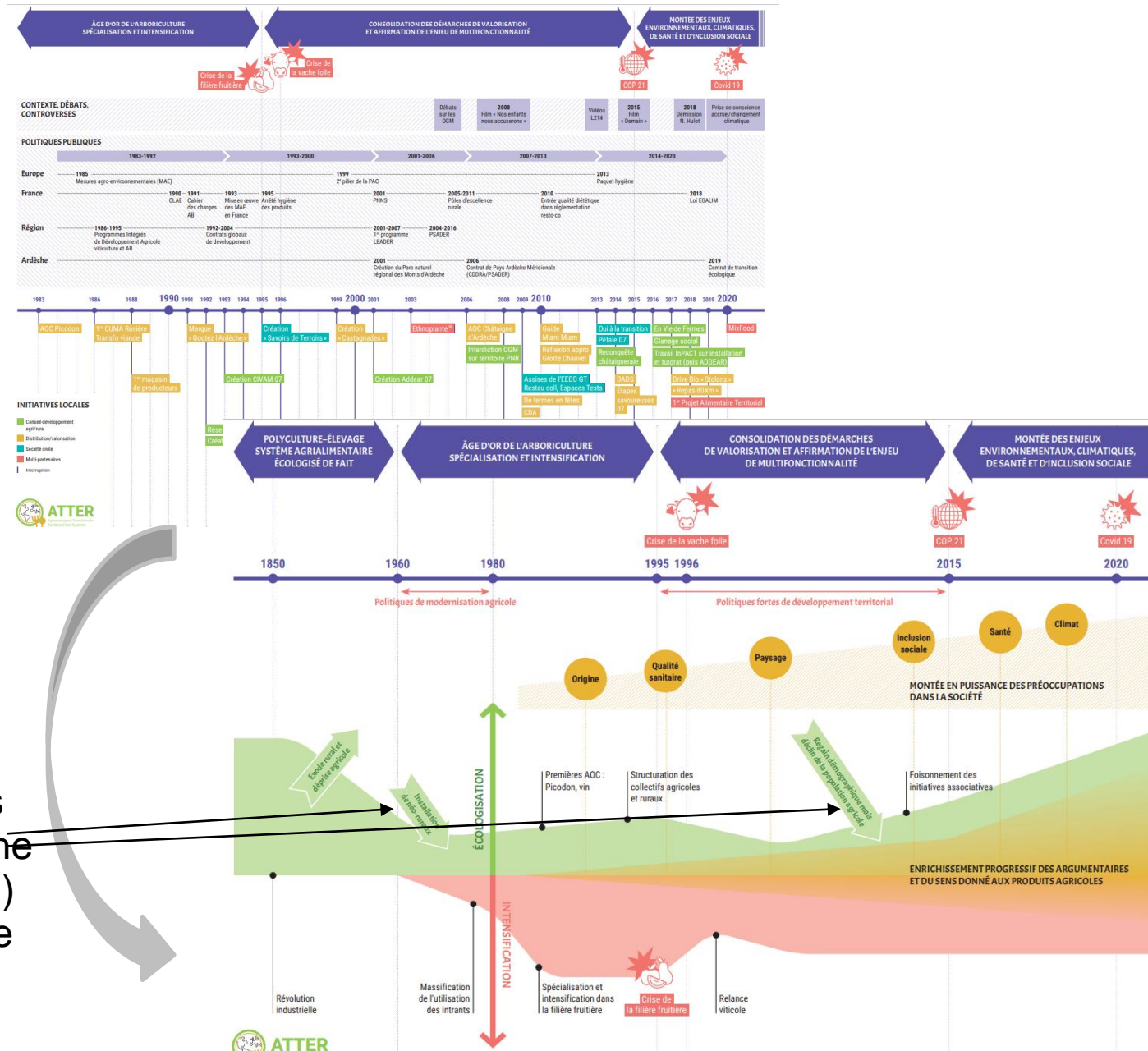


Collective multi-actors work on the past and current trajectory

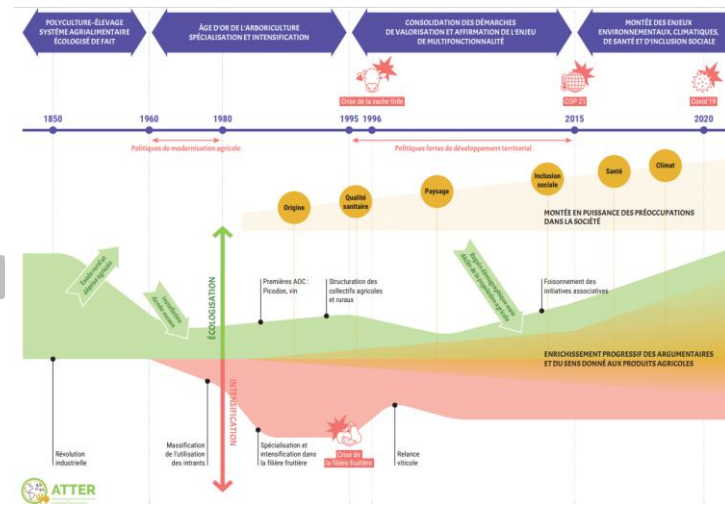
Analysing key public policies at different scales over time

Mapping the diversity of initiatives

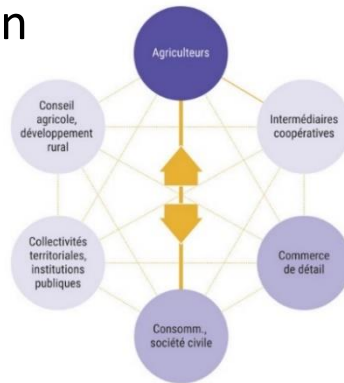
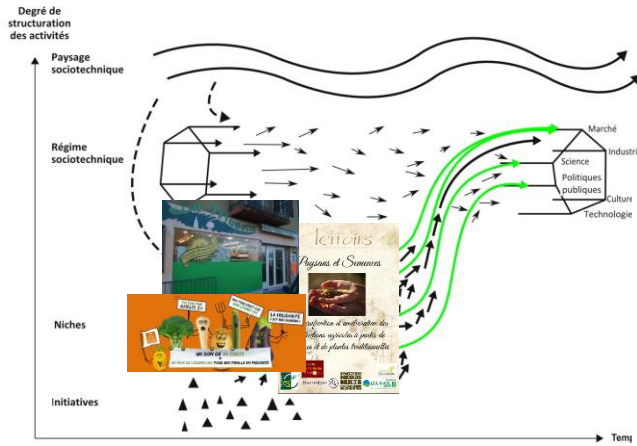
Identification of key mechanisms
 Eg. lasting role of neo rurals in the AE transition (OF, marketing etc.)
 With agroforestry as an attractive model for them today (also recognised by the AE policy)



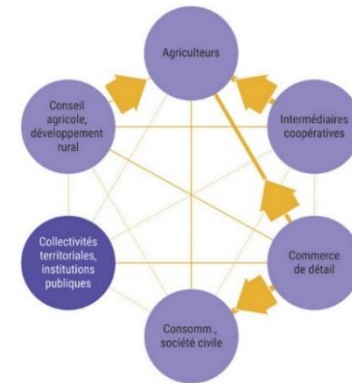
Transitions rely on power reconfigurations in the agrifood system



Alternative initiatives and networks can influence the « system » when they simultaneously act on its different components

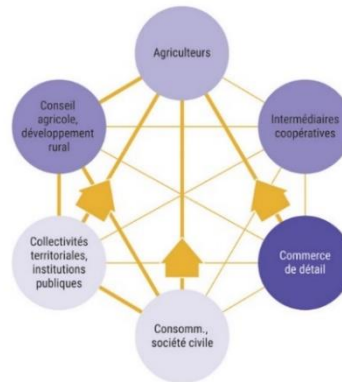


Jusqu'aux années 1960
Un système agri-alimentaire où l'autosuffisance et les échanges en proximité restent élevés.

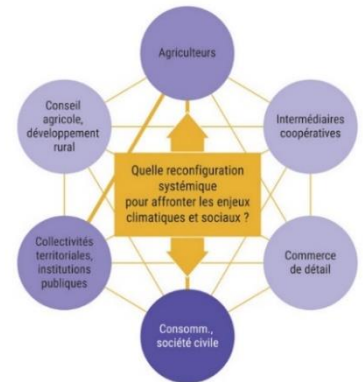


1995-2015
Un système agri-alimentaire où foisonnent les initiatives autour de l'alimentation de qualité et de proximité, fortement appuyées par les politiques territoriales.

1960-1995
Un système agri-alimentaire de plus en plus « tiré » par la grande distribution, avec l'émergence des démarches de qualité.



Depuis 2015
Un système agri-alimentaire enjoint à se reconfigurer pour affronter les enjeux climatiques et sociaux.



Conclusion

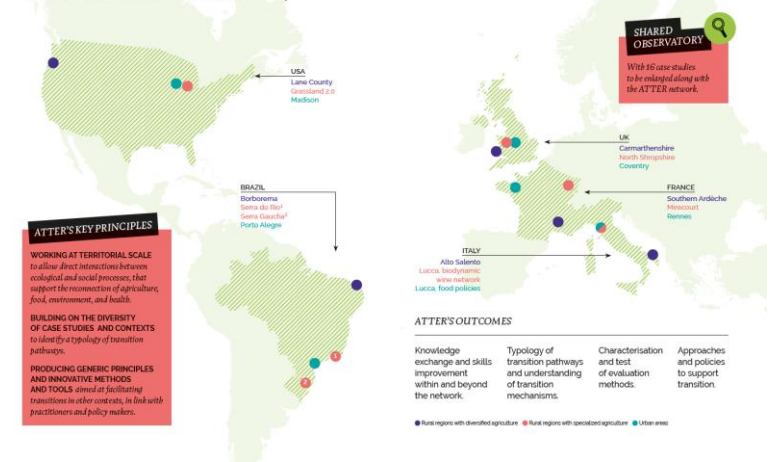
- ✓ To address transitions, need for a systemic but also a critical perspective, looking at power reconfigurations
- ✓ In an action-research perspective, need to include not only representative but also concerned actors
- ✓ Combine localised approaches and larger translocal exchange networks (bringing together academic and practitioners)

POUR UNE TRANSITION AGRICOLE ALIMENTAIRE JUSTE ET ECOLOGIQUE EN SUD ARDÈCHE

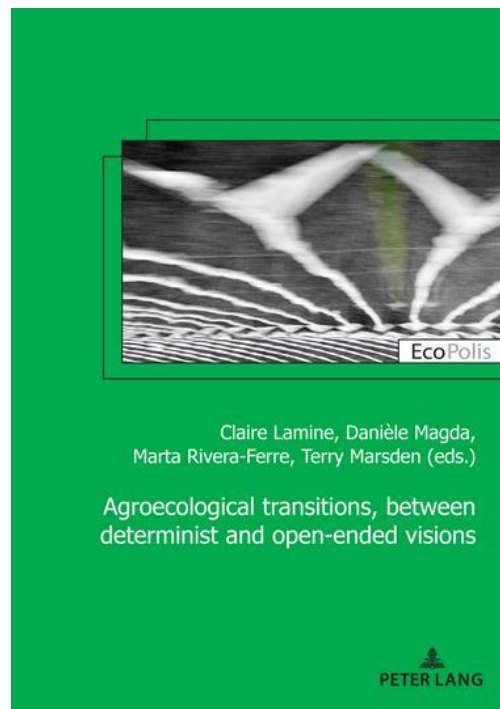
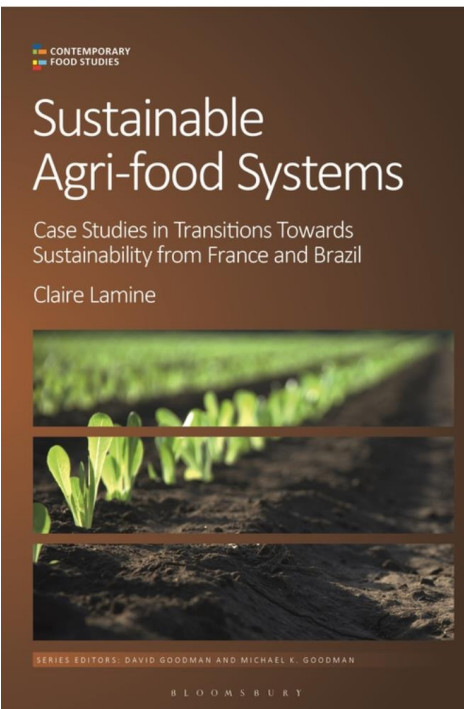
<https://www.assiette-territoire.com/manifeste>

Collective learning & cross-fertilisation

Around a portfolio of case studies and a shared observatory of territorial agri-food systems transitions



MERCI



Lamine C., Bui S., Ollivier G., 2015. Pour une approche systémique non réductionniste de la transition écologique des systèmes agri-alimentaires, *Cahiers de recherche sociologique*, 58, 95-117

