



**HAL**  
open science

# Yeast extract improves growth in rainbow trout (*Oncorhynchus mykiss*) fed a fishmeal-free diet and modulates the hepatic and distal intestine transcriptomic profile

Laura Frohn, Diogo Peixoto, Cervin Guyomar, Carla Teixeira, Frédéric Terrier, Pierre Aguirre, Sarah Maman Haddad, Julien Bobe, Benjamin Costas, Nadège Richard, et al.

## ► To cite this version:

Laura Frohn, Diogo Peixoto, Cervin Guyomar, Carla Teixeira, Frédéric Terrier, et al.. Yeast extract improves growth in rainbow trout (*Oncorhynchus mykiss*) fed a fishmeal-free diet and modulates the hepatic and distal intestine transcriptomic profile. *Aquaculture*, 2024, 579, 10.1016/j.aquaculture.2023.740226 . hal-04259805

**HAL Id: hal-04259805**

**<https://hal.inrae.fr/hal-04259805v1>**

Submitted on 26 Oct 2023

**HAL** is a multi-disciplinary open access archive for the deposit and dissemination of scientific research documents, whether they are published or not. The documents may come from teaching and research institutions in France or abroad, or from public or private research centers.

L'archive ouverte pluridisciplinaire **HAL**, est destinée au dépôt et à la diffusion de documents scientifiques de niveau recherche, publiés ou non, émanant des établissements d'enseignement et de recherche français ou étrangers, des laboratoires publics ou privés.

# **Yeast extract improves growth in rainbow trout (*Oncorhynchus mykiss*) fed a fishmeal-free diet and modulates the hepatic and distal intestine transcriptomic profile**

Laura Frohn<sup>1,2</sup>, Diogo Peixoto<sup>3,4</sup>, Cervin Guyomar<sup>6</sup>, Carla Teixeira<sup>3,4,5</sup>, Frédéric Terrier<sup>1</sup>, Pierre Aguirre<sup>1</sup>, Sarah Maman Haddad<sup>6</sup>, Julien Bobe<sup>7</sup>, Benjamin Costas<sup>3,4</sup>, Nadège Richard<sup>2</sup>, Karine Pinel<sup>1\*</sup>, Sandrine Skiba-Cassy<sup>1\*</sup>

<sup>1</sup>INRAE, Univ. Pau & Pays Adour, E2S UPPA, NUMEA, 64310 Saint Pée-sur-Nivelle, France.

<sup>2</sup>Phileo by Lesaffre, F-59700 Marcq-en-Barœul, France

<sup>3</sup>ICBAS - Instituto de Ciências Biomédicas Abel Salazar, Universidade do Porto, 4050-313 Porto, Portugal

<sup>4</sup>CIIMAR - Centro Interdisciplinar de Investigação Marinha e Ambiental, 4450-208 Matosinhos, Portugal.

<sup>5</sup>SPAROS Lda, Área Empresarial de Marim, Lote C, Olhão, Portugal.

<sup>6</sup>Sigenae, GenPhySE, Université de Toulouse, INRAE, ENVT, F-31326, Castanet Tolosan, France.

<sup>7</sup>INRAE, LPGP, Fish Physiology and Genomics, F-35000 Rennes, France

\* Co-last author

## **Corresponding author**

Sandrine Skiba-Cassy

173 route de Saint Jean-de-Luz, 64480 Saint Pée-sur-Nivelle, France

[sandrine.skiba@inrae.fr](mailto:sandrine.skiba@inrae.fr)

+33 559515993

## **Short version of the title**

Yeast in the rainbow trout diet.

**Keywords** Yeast extract; Processed animal protein; High throughput sequencing; Rainbow trout; Nutrition

## Abstract

Replacing fishmeal with alternative protein sources and improving new ingredients diets with feed additives are major objectives in aquaculture. The aim of this study was to evaluate benefits for rainbow trout (*Oncorhynchus mykiss*) of supplementing a fishmeal-free diet, composed of processed animal proteins (dehydrated poultry protein, hydrolyzed feather meal, poultry and pork blood meal), with yeast extract. Juvenile rainbow trout (initial weight  $37 \pm 2$  g) were fed either with a control diet (19% fishmeal) or with a diet based on terrestrial animal by-products (17%) supplemented or not with 3% of yeast extract. Effects of the diets were evaluated in a 4-week digestibility trial and a 12-week growth experiment. Fish health was investigated by measuring plasma immune markers and performing histological study of the gut. Underlying molecular responses were investigated using unbiased transcriptomic analysis of the liver and distal intestine. Results indicated that supplementing with 3% yeast extract did not influence nutrient digestibility substantially. Nevertheless, fish fed the yeast supplemented fishmeal-free diet grew more than those fed the non-supplemented processed animal protein diet (final body weight of  $206.7 \pm 14.2$  g vs  $182.3 \pm 13.5$  g) but less than their counterparts fed the fishmeal diet ( $230.5 \pm 7.6$  g). Plasma and structural parameters indicated no exacerbated immune response or signs of intestinal inflammation in fish fed the fishmeal-free diets. However, plasma total immunoglobulin M levels and intestinal villi were significantly higher in fish fed the diet supplemented with yeast extract. The transcriptomic analysis revealed that the diets influenced immune, inflammatory, pathogen fighting and coagulation gene-related expressions. These results suggest that the dietary inclusion of yeast can enhance a fishmeal-free diet by improving rainbow trout performances and potentially their robustness.

## 1. Introduction

According to the most recent forecasts of the Food and Agriculture Organization, global protein consumption will increase by 14% by 2030. The production of aquatic protein will help meet the global demand for protein, since per capita fish consumption is expected to exceed more than 21 kg by then. Fishing and aquaculture activities meet financial and food requirements for populations around the world. Both sectors together employ nearly 8% of the world's population and provide many people with a major source of dietary protein. In 2020, 49% of the 178 million tons of total fish production came from aquaculture and the sector is expected to contribute more than 50% of total production by the end of the decade. Thus, aquaculture is recognized as a major contributor to global food security <sup>(1,2)</sup>.

Although most of the production is intended for direct human consumption, some is used for other purposes. Currently, 12% of the total annual fish tonnage is used to produce fish oil and fishmeal to feed carnivorous farmed fish such as Atlantic salmon (*Salmo salar*) and rainbow trout (*Oncorhynchus mykiss*) <sup>(1)</sup>. These ingredients have been used to formulate aquafeeds since they fulfill nutritional needs for protein, amino acids and n-3 long-chain polyunsaturated fatty acids, and they are highly palatable and digestible <sup>(3)</sup>. Because wild fish stocks used for this purpose have been overexploited for years, they are now protected by fishing quotas to conserve them and their use in carnivorous fish feeds tends to decrease <sup>(4)</sup>.

Thus, alternative ingredients are increasingly of interest and many studies on the topic have emerged in the past few decades. For salmonids, changes in feed formulations have enabled replacing a large percentage of marine ingredients with plants raw materials <sup>(5)</sup>. However, the presence of anti-nutritional factors and an imbalance in amino acids prohibit completely replacing fishmeal with plants since doing so decreases fish growth <sup>(6,7)</sup>. Moreover, certain abrasive plant-based ingredients, especially soybean meal, trigger enteritis and consequently weaken the immune response in fish <sup>(8)</sup>. Insect meal and microalgae are interesting alternatives due to their high nutritional qualities and the short life cycles of the organisms that provide the ingredients, allowing rapid production. Using these new raw materials as a complete substitute for fishmeal in aquafeeds is not recommended because they are more expensive and raise concerns, especially regarding the environmental sustainability of certain insects <sup>(9-11)</sup>. Processed animal proteins (PAP), banned from Europe in 2001 due to spongiform encephalopathy, gradually regained popularity in the early 2010s due to increasing scientific knowledge and modernization of processing techniques. In 2013, the European Union reauthorized the use of non-ruminant by-products in aquafeeds. Like fishmeal, pig and poultry products are highly

digestible, appetizing and well balanced in protein and amino acids (excepted for lysine, methionine and isoleucine <sup>(12)</sup>). Derived from industrial by-products, they are also less expensive, do not compete with human food sources and have a lower carbon footprint than other ingredients <sup>(13–15)</sup>. Based on previous studies of salmonids, depending on the percentage of inclusion in aquafeeds, poultry by-products and pig blood meal are suitable replacements for marine ingredients since they do not induce strong adverse effects on fish growth or health <sup>(16–18)</sup>. However, PAP-based diets effectiveness still requires improvement.

Feed additives, such as yeast and its derivatives (yeast cell wall, cytosolic fraction), have become of great interest in animal health and disease prevention. In the past few decades, adding yeast to the diets has been well investigated for terrestrial livestock, and positive effects of doing so have been observed for poultry, pigs and ruminants <sup>(19,20)</sup>. In aquaculture, the dietary inclusion of whole yeast as a probiotic and of its derivatives as immunostimulant, has gained popularity as positive relations have been identified between nutrition and fish health <sup>(21)</sup>. As described in the review of Agboola *et al.* <sup>(22)</sup>, *Saccharomyces cerevisiae* is the most studied yeast strain in aquaculture. It contains relatively high contents of crude protein, amino acids, vitamins and minerals, as well as other bioactive compounds (mannan oligosaccharide and  $\beta$ -glucan) that can stimulate immunity, improve intestinal integrity, assist in wound healing and thus promote growth performances by modulating metabolism <sup>(23)</sup>. Yeast derivatives has been a major ingredient used to mitigate adverse effects of fishmeal-free diets of several fish species and shrimp <sup>(24–26)</sup>. Surprisingly, its cytosolic fraction (i.e. yeast extract) is less well known and has been rarely studied, even though it has relatively high contents of protein and bioactive components, such as nucleotides and small peptides, that could also improve fish performances and health <sup>(27)</sup>.

In aquaculture, the use of genomics can provide key insights regarding the identification of the influence of nutrition on the physiology, metabolism and immunity of farmed fish, especially for species with high economic value such as Atlantic salmon and rainbow trout <sup>(28,29)</sup>. Unlike other omics techniques such as microarrays, high-throughput sequencing technology is particularly useful for unbiased screening. It allows the sequencing of all RNAs, including small non-coding RNAs (miRNAs) ranging in size from 19 to 25 nucleotides. In fish, miRNAs are involved in the regulation of most biological functions (*e.g.* growth regulation, cell differentiation, immunity) and act, as in mammals, at the post-transcriptional level by binding to a target messenger RNA, which leads to the inhibition of its translation or its degradation <sup>(30)</sup>.

In this context, this study was conducted with the aim to improve the efficiency of plant diets integrating processed animal proteins but totally devoid of fishmeal, by using yeast extract as a

functional ingredient (3 %). Thus, the long-term benefits of supplementation with the cytosolic fraction of *Saccharomyces cerevisiae* were evaluated for rainbow trout. First, effects on zootechnical parameters were evaluated in a 4-week feed digestibility trial and a 12-week growth experiment. The overall health of the fish was then evaluated, with a focus on intestinal integrity and humoral immunity. Finally, RNAs and miRNAs were sequenced to identify underlying molecular responses of the liver and distal intestine, which are key tissues sensitive to dietary changes.

## **2. Materials and methods**

### **2.1. Experimental design**

#### ***Ethical statements***

*In vivo* experiments were performed at the French National Research Institute for Agriculture, Food and Environment (INRAE) experimental fish farm facility (IE Numea, 2021 <sup>(31)</sup>), authorized for animal experimentation by the French Veterinary Service (A64-495-1 and A40-228-1). The experiments were conducted in strict accordance with European Union regulations on the protection of animals used in scientific research (Directive 2010/63/EU) and according to the National Guidelines for Animal Care of the French Ministry of Research (decree no. 2013-118, 02 Jan 2013). In agreement with the ethical committee (C2EA-73), the experiment did not need approval, since it involved only standard rearing practices, with all diets formulated to meet the nutritional requirements of rainbow trout <sup>(3)</sup>. The staff of the facility received training and personal authorization to perform the experiments.

#### ***Feeds formulation***

To evaluate the benefits of supplementing yeast extract in a fishmeal-free diet, three feeds formulated to be isoproteic, isolipidic and isoenergetic. All the feeds were manufactured identically by extrusion with a twin-screw extruder (Clextal, Firminy, France), pelleted without the oils and then the oil mixture was added by vacuum coating, at INRAE experimental facilities in Donzacq (Landes, France). The main basal composition of the diets differed (Table 1). The control diet (CTL), composed of 19.0% of fishmeal (FM) and 7.0% of fish oil (FO), was formulated to approximate a current commercial feed and have high FM and FO contents. The processed animal protein (PAP) feed was composed of 10% of dehydrated poultry protein, 6.0% of hydrolyzed feather meal and 1.0% of poultry and pig blood meal,

provided by Soleval (Pontivy, France). The PAP+YE feed was composed of the PAP feed supplemented with 3% yeast extract with a high content of free amino acids and peptides (Prosaf®, Phileo by Lesaffre, France). The yeast product, derived from the cytosolic fraction of *S. cerevisiae*, was composed of 71.6% crude protein, 8.7% nucleotides, and less than 0.5% lipids (Suppl. Table 1).

### **Digestibility trial**

The digestibility trial was conducted at INRAE experimental facilities in Saint Pée-sur-Nivelle (Nouvelle Aquitaine, France). Nine batches of 15 rainbow trout, with a mean body weight (BW) of  $100 \pm 5$  g, were distributed and acclimated into 100 L cylindrical-conical tanks for 15 days. The tanks were supplied with continuous flow (4 L/min) of well-oxygenated fresh water (9 ppm dissolved oxygen) at a constant temperature ( $17 \pm 0.5$  °C) under a 12 h photoperiod. Experimental diets, which contained 0.1% yttrium (Thermo Scientific, Waltham, Massachusetts, USA) as an inert marker, were randomly assigned to the tanks (three tanks per diet) (Table 1). Before collecting feces, fish were acclimated to their respective diet for another 15 days period and fed twice a day until visual satiation. During the four weeks following the adaptation period, feces were collected daily using Choubert's automatic and continuous sieving system <sup>(32)</sup>, pooled by tank and stored at -20°C until further analytical assays. Apparent digestibility coefficients (ADCs) were determined using the indirect method based on analyzing the yttrium content according to NRC (2011) <sup>(3)</sup>. Yttrium concentrations were determined in diets and feces after an acid digestion with HNO<sub>3</sub> and measured with a coupled plasma-mass spectrometry (Agilent 4200 MP-AES, Santa Clara, California, USA). ADCs (%) were estimated for dry matter, energy, protein, lipids, starch, and minerals.

$$ADC \text{ dry matter (\%)} = 100 - \left[ 100 \times \left( \frac{\% \text{ of yttrium in the diet}}{\% \text{ of yttrium in the feces}} \right) \right] \quad (\text{Eq. 1})$$

$$ADC \text{ of } X \text{ (\% of drymatter)} = 100 - \left[ 100 \times \left( \frac{\% \text{ of } X \text{ in the feces}}{\% \text{ of } X \text{ in the diet}} \right) \times \left( \frac{\% \text{ of yttrium in the diet}}{\% \text{ of yttrium in the feces}} \right) \right] \quad (\text{Eq. 2})$$

with X the nutrient of interest (e.g. protein, lipids, starch, minerals) or energy.

### **Growth experiment and sampling procedure**

The growth experiment was conducted in the experimental facilities of INRAE in Donzacq (Landes, France). In total, 189 juvenile rainbow trout, with a mean BW of  $37 \pm 2$  g, were divided into groups of 21 fish in 9 tanks of 100 L each supplied with natural freshwater at 17°C. The three experimental diets

were randomly allocated to the tanks in triplicate (three tanks per diet) (Table 1). For 12 weeks, fish were reared under a natural photoperiod and fed twice a day by hand to visual satiation. The feed dispensed and total fish biomass in each tank were recorded every three weeks. Zootechnical parameters were calculated for feed efficiency (FE) and daily feed intake (DFI, %/day).

$$FE = \frac{finB - iniB}{WI} \quad (\text{Eq. 3})$$

$$DFI = \frac{WI}{\frac{finBW + iniBW}{2} \times \Delta t} \times 100 \quad (\text{Eq. 4})$$

with *finB* and *iniB* as the initial and final biomass per tank (g), respectively; *iniBW* and *finBW* the initial and final BW (g), respectively; *WI* as the feed dispensed during the growth experiment (g); and  $\Delta t$  as the feeding period (days).

After 12 weeks of feeding, fish were anesthetized and euthanized by immersion in successive baths of benzocaine (30 mg/mL and 60 mg/mL, respectively). Nine fish per condition (three per tank) were collected, measured, weighed and frozen at -20°C for analysis of body composition. On these fish, liver and viscera were collected and weighed in order to calculate hepato-somatic index (HSI, %), viscerosomatic index (VSI, %) and condition factor K.

$$HSI = \frac{\text{Liver weight}}{\text{Fish BW}} \times 100 \quad (\text{Eq. 5})$$

$$VSI = \frac{\text{Viscera weight}}{\text{Fish BW}} \times 100 \quad (\text{Eq. 6})$$

$$\text{Factor } K = \frac{\text{Fish BW}}{\text{Fish length}^3} \times 100 \quad (\text{Eq. 7})$$

with Fish BW as the fish body weight (g) and fish length expressed in cm.

An additional 12 fish per condition (four per tank) were anaesthetized and euthanized for tissue sampling. Blood was collected from the caudal vein 48 h after the last meal using a syringe previously treated with EDTA and centrifuged at 3000 x *g* for ten minutes. Plasma was recovered and frozen at -20°C to later quantify humoral immune parameters. Liver and distal intestine samples were collected 24 h after the last meal and soaked in RNA later before being immediately immersed in liquid nitrogen and kept at -80°C until further molecular analysis. Additional samples of proximal and distal intestine were collected 48 h after the last meal, immediately fixed in a 10% buffered formalin solution, and then processed for later histological studies.



## 2.2. Proximate composition of diets, feces and whole body

The proximate compositions of the diets, feces and whole body were quantified according to the following protocols. Dry matter and ashes were determined after 24 hours of drying at 105°C and 7 hours of combustion at 550°C, respectively. Gross energy content was measured using an adiabatic bomb calorimeter (IKA C5003). Crude protein was determined using the Kjeldhal acid-digestion method<sup>(33)</sup>. The total lipid content was isolated, purified and quantified gravimetrically according to the protocol of Folch *et al.*<sup>(34)</sup>. Starch contents were measured with the Megazyme K-TSTA-100A kit following the supplier's instructions (Megazyme, Bray, Ireland).

The analysis of total and free amino acid profiles of the feeds, the 3'-nucleotide contents of these diets, and the distribution of proteins from the experimental diets by molecular weight ranges were subcontracted to the company Eurofins (Nantes, France). Amino acids were analyzed by ion chromatography coupled with UV detection. Free tryptophan was analyzed by HPLC coupled with Fluo detection. 3'-nucleotide contents were determined by capillary electrophoresis. Distribution of proteins by molecular weight ranges was assessed by liquid chromatography coupled with UV detection.

Data on the proximate diet and whole-body compositions data were used to calculate protein, lipid and energy intake (kJ/kg BW/day), gain (kJ/kg BW/day) and retention (%), using the following equations:

$$X \text{ intake} = DFI \times \% X \text{ feed content} \quad (\text{Equation 5})$$

$$X \text{ gain} = \frac{(X_{finFish} \times finBW - X_{iniFish} \times iniBW)}{\frac{(finBW + iniBW)}{2} \times \Delta t \times 1000} \quad (\text{Equation 6})$$

$$X \text{ retention} = \frac{X \text{ gain}}{X \text{ intake}} \times 100 \quad (\text{Equation 7})$$

with X as the nutrient considered or energy;  $X_{finFish}$  and  $X_{iniFish}$  as the initial and final fish nutrient or energy content, respectively (in % of wet matter).

## 2.3. Humoral immune parameters

Plasma lysozyme activity, peroxidase activity, alternative complement pathway activity and total immunoglobulin M levels were measured in triplicate using a microplate reader (Synergy HT, Biotek, Winooski, Vermont, USA).

### ***Plasma lysozyme activity***

Plasma lysozyme activity (n = 12 fish per condition) was quantified using a turbidimetric assay, as described by Peixoto *et al.* <sup>(35)</sup>. On a microplate, 15  $\mu$ L of plasma were incubated with 250  $\mu$ L of a *Micrococcus luteus* solution (Sigma-Aldrich, Saint-Louis, Missouri, USA, 0.5 mg/mL in 0.05 M sodium phosphate buffer, pH 6.2) at 25°C. During incubation, absorbance was measured at 0.5 and 15 min at 450 nm. Lyophilized hen egg white lysozyme was serially diluted (0.5 M, pH 6.2) and used to develop a standard curve. Plasma lysozyme concentrations were calculated using the equation for the standard curve.

### ***Plasma peroxidase activity***

Total plasma peroxidase activity (n = 12 fish per condition) was measured using the protocol of Quade and Roth <sup>(36)</sup>. Each plasma sample was diluted ten-fold in Ca<sup>2+</sup>- and Mg<sup>2+</sup>-free Hank's Balanced Salt Solution (HBSS) and incubated 2 min with 50  $\mu$ L of 3,3',5,5'-tetramethylbenzidine hydrochloride (TMB, 20 mM) and 50  $\mu$ L hydrogen peroxide (H<sub>2</sub>O<sub>2</sub>, 5 mM). At the end of incubation, the reaction was stopped by adding 50  $\mu$ L of sulfuric acid (H<sub>2</sub>SO<sub>4</sub>, 2 M) and the optical density (OD) was read at 450 nm. HBSS was used as a blank and one unit of peroxidase activity was defined as the quantity of peroxidase that produces an absorbance change of 1 OD.

### ***Plasma alternative complement pathway activity***

Plasma alternative complement pathway activity (n = 9 fish per condition) was estimated using the method of Sunyer and Tort <sup>(37)</sup>. Rabbit red blood cells (RaRBC) were washed in GVB buffer (isotonic veronal buffered saline with 0.1% gelatin, pH 7.3) and then resuspended in GVB buffer to a concentration of  $2.8 \times 10^8$  cells/mL. Plasma samples were serially diluted in Mg-EGTA-GVB buffer (GVB buffer containing 10 mM Mg<sup>2+</sup> and 10 mM EGTA) and incubated in triplicate with 10  $\mu$ L of RaRBC suspension at room temperature with constant shaking. The hemolysis reaction was stopped after 100 min by adding 150  $\mu$ L of cold EDTA-GVB (GVB buffer containing 20 mM EDTA). The degree of hemolysis was determined by measuring the OD of the supernatant at 414 nm. Plasma concentrations that yielded 50% of RaRBC hemolysis were defined as ACH50 units. Negative controls consisted of samples without plasma, from which OD values were subtracted for each sample.

### ***Plasma total immunoglobulin M level***

Total plasma immunoglobulin M levels (n = 12 fish per condition) were determined using an enzyme-linked immunosorbent assay (ELISA) <sup>(35)</sup>. Plate wells were coated with diluted plasma proteins (1:1000

in 50 mM Na<sub>2</sub>CO<sub>3</sub> buffer, pH 9.6), blocked 2 h with a blocking buffer (5% low fat milk in TBST, pH 7.3) and washed with a TBST solution (1X tris-buffered saline with 0.1% Tween 20, pH 7.3). Samples were then incubated with 100 µL of anti-rainbow-trout IgM monoclonal antibody (Aquatic Diagnostic Ltd., Scotland, 1:400 in a blocking buffer) for 1 h, washed again with TBST and incubated with an anti-mouse secondary antibody (EMD Millipore Corp., USA, 1:1000 in a blocking buffer) for 1 h. Subsequently, 100 µL of TMB was added, and the reaction was stopped with 100 µL of H<sub>2</sub>SO<sub>4</sub> (2 M). Absorbance was measured at 450 nm and total immunoglobulin levels were equated to OD.

#### **2.4. Histological analysis of the intestine**

Proximal and distal intestine samples (n = 12 per condition) were processed using standard histological methods. Briefly, tissues were fixed in 10% buffered formalin before being dehydrated in consecutive ethanol baths (70%, 95% and 100%), clarified in xylene and embedded in paraffin blocks. Subsequently, 2 µm longitudinal sections were cut and stained with hematoxylin and eosin to measure the height of intestinal villi, and additional sections were stained with periodic acid-Schiff alcian blue to quantify the number of goblet cells per mm<sup>2</sup> (density). Villi height was measured on one slide per fish using a light microscope (Nikon Eclipse E200, Tokyo, Japan) equipped with a digital camera (E3CMOS Series C-mount USB3.0 CMOS Camera, Sony, Tokyo, Japan) and ToupView 3.7 software (ToupTek, Hangzhou, China).

#### **2.5. Molecular analysis**

##### ***Total RNA extraction***

Total RNA and miRNA was extracted from liver and distal intestine (n = 6 per condition) using a miRNeasy Tissue/Cells Advanced Mini Kit (Qiagen, Hilden, Germany) following the protocol provided by the manufacturer. To avoid genomic DNA contamination, RNA samples (10 µg of each) were subjected to DNase treatment using a Turbo DNA-free kit (Invitrogen, USA). RNA concentrations and quality were determined using a Nanodrop® ND1000 spectrophotometer (Thermo Scientific, USA) and subjected to a Bioanalyzer (Agilent, USA) to validate the RNA extraction procedure. RNA integrity was verified using agarose gel (1%).

### ***Preparation and sequencing of cDNA libraries***

Total RNA was quantified using a Fragment Analyzer and the standard sensitivity RNA kit (Agilent Technologies, USA). Libraries were constructed using a Stranded mRNA Prep Ligation kit (Illumina, San Diego, California, USA) according to the manufacturer's instructions. Briefly, poly-A RNAs were purified using oligo(dT) magnetic beads from 500 ng of total RNA. Poly-A RNAs were fragmented and underwent a reverse transcription using random hexamers. During the second strand-generation step, dUTP was added to dTTP to prevent the second strand from being used as a matrix during the final PCR amplification. Double stranded cDNAs were adenylated at their 3' ends and ligated to Illumina's universal anchors. Ligated cDNAs were amplified after 13 PCR cycles. During this PCR, the libraries were indexed, and adapter sequences were added to be compatible with the cluster-generation step. PCR products were purified using AMPure XP Beads (Beckman Coulter Genomics, Brea, California, USA). Libraries were validated using the High Sensitivity NGS kit (Agilent, USA) on the Fragment Analyzer and quantified using the KAPA Library quantification kit (Roche, Basel, Switzerland).

Thirty-six libraries were pooled in equimolar amounts. The pool was then sequenced using a Novaseq 6000 (Illumina, USA) on one lane of an SP flow cell in paired-end 2\*150nt mode according to the manufacturer's instructions.

### ***RNA sequencing quality control and transcript quantification***

Image analyses and base calling were performed using NovaSeq Control Software and the Real-Time Analysis component (Illumina, USA). Demultiplexing was performed using Illumina's conversion software (bcl2fastq 2.20). The quality of the raw data was assessed using the FastQC program (version 0.11.8, Babraham Bioinformatics, Cambridge, UK) and the Sequencing Analysis Viewer software (Illumina, USA). The FastQ Screen program (version 0.14, Babraham Bioinformatics, UK) was used to estimate the potential degree of contamination.

Transcripts were quantified using the Nextflow (version 20.11.0-edge) nf-core/rnaseq (revision 3.0) pipeline <sup>(38)</sup> on the SLURM cluster of the Genotoul Bioinformatics platform. Nextflow is a FAIR (Findable, Accessible, Interoperable, Reusable) pipeline. The pipeline used the STAR program (version 2.6.1d) <sup>(39)</sup> to map the reads to the *O. mykiss* reference genome (Omyk\_1.0) and projected the alignments onto the transcriptome (Omyk\_1.0.104). The quantification count table was generated using RSEM software (version 1.3.1) <sup>(40)</sup>.

### ***Preparation and sequencing of miRNA libraries***

miRNAs were quantified using a Fragment Analyzer and the Small RNA Analysis kit (Agilent, USA). Libraries were constructed using a NEXTFLEX Small RNA-seq v3 kit (Perkin Elmer, Waltham, Massachusetts, USA) following the manufacturer's instructions. Briefly, a 3' adenylated adapter was ligated to the 3' end of 400 ng RNA and purified to remove excess 3' adapters. A 5' adapter was ligated to the 5' end of the 3'-ligated miRNA. The resulting construction was purified to remove excess 5' adapters. The 5'- and 3'-ligated miRNAs underwent a reverse transcription using an M-MuLV reverse transcriptase and an RT primer complementary to the 3' adapter. The resulting cDNAs were used as a matrix in a 23-cycle PCR using a pair of uniquely barcoded primers. The resulting barcoded library was size-selected on a Pippin HT using a 3 % agarose cassette (Sage Science, Beverly, Massachusetts, USA), aiming for a size of 147-193 bp. Once size-selected, libraries were verified using a Fragment Analyzer and the High Sensitivity NGS kit (Agilent, USA), and quantified using the KAPA Library quantification kit (Roche, Switzerland).

Thirty-six libraries were pooled in equimolar amounts. The pool was then sequenced using a Novaseq 6000 (Illumina, USA) on one lane of an SP flow cell in paired-end 2\*50nt mode according to the manufacturer's instructions.

### ***miRNA sequencing quality control and miRNAs quantification***

Quality control of miRNA sequencing was performed as described previously for RNA sequencing. miRNA raw reads were trimmed using the Cutadapt program (version 3.4)<sup>(41)</sup> to remove the sequencing adapter (TGAATTCTCGGGTGCCAAGG) at the 3' end. Additionally, four bases were also trimmed from the 5' end and 3' end of the reads, as described in the manual for the NEXTFLEX Small RNA-Seq v3 kit (Perkin Elmer, USA).

### ***miRNA quantification***

Trimmed miRNA libraries were processed using the *Prost!* program (version 0.7.60)<sup>(42)</sup> to quantify the expression of mature miRNAs. *Prost!* was configured to retain all reads of 17-25 nucleotides that appeared at least five times in the dataset. Sequences were aligned on the USDA\_OmykA\_1.1 rainbow trout reference genome (accession GCF\_013265735.2). Genomic locations were then enriched by *Prost!* using the FishMiRNA database (version of June 2021) and 354 sequences of rainbow trout mature miRNAs described by Cardona *et al.* (2021)<sup>(43)</sup>. Rainbow trout was used as the main species to

annotate the genomic locations, which yielded a “compressed by annotation” table of *Prost!* results that summarized expression values for all known rainbow trout mature miRNAs. As advised by *Prost!* documentation, when multiple potential annotations were identified for a given location, read counts were evenly distributed among the annotations.

### ***Analysis of transcripts and miRNAs differential expression***

Differential expression was analyzed using the DESeq2 program (version 1.32) <sup>(44)</sup>, with the RSEM raw counts for total RNA sequencing and the *Prost!* raw expression matrix of annotated mature miRNAs for miRNA sequencing. Differential expression was analyzed in the same way for both datasets using the standard *DEseq2* procedure for all 36 libraries and specifying a suitable contrast for each differential expression test. Genes or mature sequences with a false discovery rate (FDR) less than 0.05 were retained for further analysis.

### ***Gene ontology analysis***

Enrichment of gene ontology terms was tested in each of the sets of differentially expressed genes. To create a set of background genes, the Manhattan method of the *genefilter* package <sup>(45)</sup> of R software <sup>(46)</sup> (version 4.1.3) was used to retrieve a set of 100 genes with expression profiles similar for to those of each differentially expressed genes. Enrichment was then analyzed using the *topGO* R package (version 2.44.0) <sup>(47)</sup> and the Ensembl 104 annotation. All terms of the molecular function, biological process and cellular compartment ontologies were tested using Fisher’s exact test and the “classic” algorithm of *topGO*.

## **2.6. Statistical analysis of zootechnical parameters, plasma and histological data**

Statistical analyses were performed using the *Rcmdr* R package. Normality of the distributions and homogeneity of the variances were assessed using a Shapiro-Wilk test and Levene’s test, respectively. If normality and homoscedasticity were confirmed, the data were analyzed using one-way analysis of variance (ANOVA) test followed by Tukey’s range test. If one or both conditions were not met, the data were analyzed using the non-parametric Kruskal-Wallis test. Differences were considered statistically significant at  $p < 0.05$ .

## **3. Results**

### **3.1. Feed composition**

The total amino acid profiles of the diets exhibited a high degree of similarity, with variations not exceeding a 1.5-fold difference. However, more noticeable distinctions were observed in the levels of free amino acids (Table 2). Compared to the CTL diet, the total sum of free amino acids in the PAP diet increased by 1.5-fold, primarily attributed to a significant boost in free lysine (2.8-fold increase) and methionine (9.9-fold increase). In the PAP+YE diet, the sum of free amino acids showed a 2.1-fold increase compared to the PAP diet thanks to a substantial rise in free lysine and methionine, along with increases in most other amino acids ranging from a 1.3-fold increase for arginine to a 4.7-fold increase for glutamic acid. The overall content of 3'nucleotides in the diets decreased in both the PAP and PAP+YE diets when compared to the CTL diet. Nevertheless, there was a notable 22% difference in the total 3'nucleotide content between the PAP and PAP+YE diets, with the advantage being in favour of the yeast-containing diet (Table 3).

There were no noteworthy alterations detected in the distribution of dietary proteins across various molecular weight ranges (Suppl. Table 2).

### **3.2. Apparent nutrient digestibility**

Overall, ADCs were high for all diets, exceeding 80% for dry matter, protein, lipids, starch and energy, and exceeding 40% for ash (Table 2). The PAP diet was more digestible than the CTL and PAP+YE diets, with a significant increase in dry matter, protein and energy digestibilities ( $p < 0.05$ ). Compared to the PAP diet, the addition of yeast reduced the digestibility of dry matter by 2.05% and that of energy by 1.6%, while the digestibility of other nutrients did not change significantly. The PAP+YE and CTL diets exhibited similar digestibilities, except for dry matter (DM), which was higher in the PAP+YE diet compared to the CTL diet. The digestibilities of lipids, ash and starch did not differ significantly among the diets.

### **3.3. Growth metrics and feed consumption**

The initial BW of the fish were not statistically different ( $p > 0.05$ ), but after 12 weeks of feeding, the group fed the CTL diet showed the best growth performances, with a significantly higher final BW (Table 3). Conversely, fish fed the PAP diet showed the worst growth performances; however, adding yeast extract to the PAP diet increased fish growth significantly ( $p = 0.01$ ). DFI was highest for fish fed the PAP diet ( $p < 0.01$ ). The diets did not influence FE, despite a trend for lower FE for fish fed the PAP

diet ( $p = 0.06$ ). The fish survival rate was 100% regardless of the diet. Anatomical indexes, including HSI, VSI and condition factor K, were not affected by the diets ( $p > 0.05$ ).

#### **3.4. Whole-body composition and nutrients use**

At the end of the growth experiment, the diets did not influence fish body composition of dry matter, ashes, protein, lipids or energy ( $p > 0.05$ ). However, significant differences were observed in body protein content among the three diets. Fish fed the CTL diet had the highest body protein content, while those fed the PAP diet had the lowest. An intermediate value was also evident for the PAP+YE group (Table 4). The diets did not affect energy or lipid gains or lipid retention, but protein gain, energy retention and protein retention differed significantly among groups ( $p < 0.05$ ) (Table 5). The control group (CTL) showed the best nutrient utilization capacities for protein gain and protein retention while fish fed the PAP diet had the lowest values for protein gain, energy retention and protein retention. Compared to the PAP diet, the PAP+YE diet increased protein gain (+10.1%), energy retention (+15.5%) and protein retention (+23.6%), with values that did not differ significantly from those of the CTL diet.

#### **3.5. Histological analysis of the intestine**

The diet influenced villi height in the proximal part of the intestine, with a significant increase in height in fish fed the PAP+YE diet ( $p < 0.05$ ) (Fig. 1). Conversely, no influence of diets was observed on villi height in the distal intestine ( $p > 0.05$ ). The number of goblet cells per  $\text{mm}^2$  (density) was not affected by the diet in both parts of the intestine ( $p > 0.05$ ) (Fig. 2).

#### **3.6. Plasma immune parameters**

The diets did not influence lysozyme and alternative complement pathway activities after 12 weeks of feeding (Table 6). In contrast, total peroxidase activity was significantly lower in fish fed PAP diet than that in fish fed the CTL diet, while that of fish fed the PAP+YE diet was intermediate and also lower than that in fish fed the CTL diet ( $p = 0.04$ ). Total immunoglobulin M levels did not differ significantly between the fish fed the CTL and PAP diets but were 25% higher in fish fed the PAP+YE diet ( $p = 0.001$ ).

#### **3.7. Analysis of gene expression in the liver and distal intestine**



### ***RNA sequencing and mapping***

SAMtools utilities (version 1.10)<sup>(48)</sup> specified that 46.5- 93.4 million reads per sample were generated in BAM files, of which 68.0%- 83.7% per sample were properly paired. The sequencing produced 18-22 million passed filter clusters per library. The descriptive files as well as the generated data for RNA and miRNAs sequencing are available in the NCBI SRA repository under the following accession number PRJNA924987.

### ***Identifying differentially expressed transcripts in the liver and distal intestine in response to the diets, gene ontology enrichment and pathway analysis***

In the liver, 14 transcripts were differentially expressed with three down-regulated genes (fold changes ranging from -0.64 to -1.10), and 11 up-regulated genes (fold changes ranging from 0.60 to 2.22) (Fig. 3 a), Table 7). The largest modulation was observed when comparing the PAP and CTL diets, with 11 transcripts differentially expressed, of which one and 10 were down-regulated and up-regulated, respectively. The number of differentially expressed transcripts decreased to three when comparing the PAP and PAP+YE diets, of which two were down-regulated. No genes were differentially expressed when comparing the PAP+YE and CTL diets. Moreover, no transcript was common to all three comparisons. In the distal intestine, 24 transcripts were differentially expressed: 16 transcripts were down-regulated with a range of fold change from -0.44 to -23.67, and 12 were up-regulated with a range of fold change from 0.88 to 22.6 (Fig. 3 b), Table 8). Unlike in the liver, most of them occurred when comparing the PAP+YE and CTL diets, with 13 transcripts, of which six were down-regulated. One of the 13 transcripts was shared with the PAP+YE vs PAP comparison, while two were shared with the PAP vs CTL comparison. The PAP+YE vs PAP comparison identified seven differentially expressed transcripts, of which four were down-regulated. The PAP vs CTL comparison identified eight differentially expressed transcripts, of which two were up-regulated, with one transcript shared with the PAP+YE vs PAP comparison.

Enrichment of differentially expressed genes was tested against a set of 4990 background genes. Overall, 25-gene ontology terms were found significantly enriched in one contrast. Gene ontology enrichment and an additional literature analysis allowed to potential pathways to be assigned to each differentially expressed transcript (Table 7, Table 8 and Suppl. Fig. 1). In the liver, of the 14 differentially expressed genes, six were related to immune or inflammatory functions. The other eight transcripts were assigned to cell protection, coagulation or metabolism functions. In the distal intestine, of the 28 transcripts differentially expressed, seven were assigned putatively to immunity or inflammation functions, two to coagulation and wound healing, two to endoplasmic reticulum stress response, three

to antipathogen functions and two to metabolism. Transcripts classified into the category "Others" could not be assigned to specific functions due to lack of literature or poor genome annotation.

### **3.8. Analysis of miRNAs expression in the liver and distal intestine**

#### ***miRNA sequencing and mapping***

A total of 321 mature miRNAs with a read count greater than one transcript per million (TPM) were detected in at least one sample. As frequently occurs in miRNA sequencing, the miRNome was dominated by a few highly abundant mature sequences. The most abundant sequence (omy-miR-122-5p) had a mean normalized count of 204 000 TPM across all libraries.

#### ***miRNAs differentially expressed in the liver and distal intestine in response to the diets***

Of the 318 mature miRNAs detected in the liver at more than a mean of 0.1 TPM average, only 4 were differentially expressed, and they belonged to the PAP+YE vs PAP comparison (Table 9). Two were up-regulated (miR-222b-3p and miR-92a-3p) and the other two were down-regulated (miR-18a-5p and miR-217a-5p) in response to the addition of yeast extract. In contrast, the diets had no influence on the differential expression of the 310 mature miRNAs detected in the distal intestine.

## **4. Discussion**

Replacing fishmeal with alternative ingredients and improving the quality of fishmeal-free diets has become increasingly necessary for the sustainable development of aquaculture, especially for carnivorous species of high economic value. It is well established that salmonids, such as rainbow trout, have a low tolerance to fishmeal-free diets. Completely replacing fishmeal with plant-based ingredients is likely to worsen fish performances<sup>(49,50)</sup>. To counteract the adverse effects on farmed fish growth, alternative animal protein sources (e.g. poultry by-product meal, feather meal, poultry or pig blood meal) have been investigated. Compared to plant raw materials, terrestrial animal by-products have a high protein content (> 50 %) and a balanced amino acid profile<sup>(12)</sup>, are highly digestible for fish<sup>(51)</sup>, are palatable and are devoid of anti-nutritional factors<sup>(52)</sup>, and have a lower price and a reduced environmental impact<sup>(53,54)</sup>. However, results of partially or completely removing fishmeal from the diet remain unsatisfactory for rainbow trout<sup>(55-57)</sup>, gilthead seabream (*Sparus*

*aurata*)<sup>(58)</sup> and Pacific white shrimp (*Litopenaeus vannamei*)<sup>(59)</sup>. This was confirmed in the present study, which showed that juvenile rainbow trout grow more slowly on a fishmeal-free diet containing plant-based ingredients and PAP than on a 19% fishmeal diet, even though the nutrient requirements were fully met. One solution to improve the performance of fishmeal-free diets is to use functional ingredients such as yeast, which is used not only as a source of protein, but also for its beneficial effects on animal growth and health due to its ability to stimulate the immune system<sup>(60)</sup>. In the present study, adding 3% yeast extract increased the effectiveness of the PAP diet, as indicated by the higher final body weight.

Studies agree that animal by-products in diets are appetizing and highly digestible, especially their protein fractions, for several fish species<sup>(15,61–63)</sup>, which was confirmed in the present study. Because adding yeast to the diet barely changed nutrient digestibility, the increased growth of fish fed the PAP+YE diet was not due to an increase in digestibility, but might be due to better metabolic use of nutrients. Indeed, adding yeast tended to increase the FE, and trout fed the PAP+YE diet retained more protein than those fed the PAP diet, resulting in a significantly higher level of whole-body protein content compared to fish fed the PAP diet. This is consistent with the nutrient utilization parameters. Indeed, when analyzing nutrient gains and retentions, we found that trout fed the PAP feed had lower protein gains and retentions than those fed the fishmeal-based CTL feed. Moreover, the addition of yeast to the PAP feed restored similar protein gain and retention as fish fed the CTL feed. An improvement in protein retention has already been observed in Chinese perch (*Siniperca chuatsi*) fed a nucleotide-supplemented diet<sup>(64)</sup> and in European sea bass (*Dicentrarchus labrax*) fed a yeast-supplemented diet<sup>(65)</sup>. The improvement of this parameter in the present study may therefore be explained by the nucleotide richness of the yeast extract (8.7%) used as a feed additive. Metabolic disruptions associated with poor feed utilization can also be encountered in fish fed a diet composed of plant ingredients and animal co-products. These disruptions result in flesh, liver and perivisceral area fattening in sea bream (*Sparus aurata*) and European sea bass<sup>(66,67)</sup>. In our study, body compositions were identical regardless of diet. Hepatosomatic (HSI) and viscerosomatic (VSI) index were also unaffected by PAP and PAP+YE diet composition. Overall, these results do not indicate any lipid metabolic disturbance. Some additional analyses would have supported these results with for instance, measuring lipid levels in the liver and performing histological analysis of the liver in order to assess the presence of lipid droplets, which is one of the symptoms encountered in animals with hepatic steatosis<sup>(68)</sup>.

Because rainbow trout are more tolerant of soybean meal than Atlantic salmon are<sup>(69)</sup>, the small decrease in soybean meal content of the PAP+YE diet was likely not the main cause of the increase in growth. Similarly, a previous study has shown that including faba beans in the diet of rainbow trout,

even up to 15%, does not affect the growth performance <sup>(70)</sup>. This minimizes the importance of reducing the proportion of faba beans from 12 to 8% in the PAP+YE diet compared to the PAP diet, for the improvement of growth performance.

The benefits of yeast for growth have been demonstrated for many fish species such as salmon <sup>(71)</sup> and tilapia (*Oreochromis mossambicus*) <sup>(72)</sup>. However, these studies used yeast to replace fishmeal protein and thus included it in percentages higher than the 3% used in the present study. In aquaculture nutrition, it is recommended to introduce functional additives in small amounts (< 10%) due to their high cost linked to the manufacturing process to obtain ultra-pure products <sup>(73)</sup>, but also to avoid excessive stimulation of the immune system which has been shown to be responsible for growth repression in *Labeo rohita* fingerlings <sup>(74)</sup>, for instance. In this study, the supplementation of 3% yeast extract was chosen to match the price of the control feed composed of fish oil and fishmeal (0,85 € per kilogram of feed for CTL and PAP+YE diets). The protein fraction of the yeast extract (71.6 %DM) used in the present study was mainly composed of small peptides and free amino acids. The addition of 3% yeast did not alter the distribution of proteins by molecular weight classes; however, it led to a noteworthy increase in free amino acid content. This characteristic may have increased the bioavailability of amino acids, as previously demonstrated for rainbow trout <sup>(75)</sup>, and thus promoted amino acid use and growth. The increased growth could also have been related to a positive effect of the yeast extract on the structure of the intestinal mucosa. Trout fed the PAP+YE diet had significantly higher intestinal villi in the proximal intestine, which agrees with previous observations of Eurasian carp (*Cyprinus carpio*) fed a diet in which fishmeal was partially replaced with 3% of a complex product derived from the enzymatic hydrolysis of yeast <sup>(76)</sup>. These results suggest that adding yeast extract provides a larger surface area for nutrient absorption in the proximal part of the intestine, particularly for amino acids and peptides <sup>(77)</sup>, due to its positive effect on the height of villi. Increased villi height has already been observed in Atlantic salmon <sup>(78)</sup>, in red drum (*Sciaenops ocellatus*) <sup>(79)</sup> and in red sea bream (*Pagrus major*) <sup>(80)</sup> fed a diet enriched with nucleotides. The effects of nucleotides on the morphology of the intestinal mucosa in fish are still poorly understood but some studies on rodents <sup>(81,82)</sup> suggest that their hydrolysis during digestion would increase the uptake of nucleosides, a form preferentially incorporated into tissues. In this study, we can reasonably rule out the involvement of nucleotides in the increase in villi size observed exclusively in rainbow trout fed the PAP+YE diet because the nucleotide content of the PAP+YE diet, although increased compared to the PAP diet, was still lower than that of the CTL diet. Strong evidence suggests a relation among fish nutrition, health and growth performances. In this respect, plasma immune markers and gut structure were analyzed extensively, since they have been identified as relevant for assessing fish health <sup>(83,84)</sup>. In addition, an unbiased transcriptomic analysis was performed on genes and miRNAs in the liver and distal intestine.

In the plasma, only total peroxidase activity was significantly lower in fish fed the PAP diet, and the diets did not influence lysozyme or alternative complement pathway activities. In the gut, enteritis is usually indicated by an increase in the number of goblet cells and shortening of the intestinal villi <sup>(85,86)</sup>. This phenotype, which is found in Atlantic salmon fed a diet rich in soybean products <sup>(87)</sup>, was not observed in the present study, in which the mean number of goblet cells was identical among the three diets. Fish fed the PAP and PAP+YE diets did not have shorter villi than those fed the CTL diet. Therefore, plasma immune indicators and intestinal histology did not indicate an exacerbated inflammatory-type immune response in fish fed diets containing animal by-products, with or without yeast. Nevertheless, fish fed the supplemented PAP+YE diet had the highest level of total immunoglobulin M, which can be explained by the nature and diversity of small peptides brought by the yeast extract (50.1% of total peptides are smaller than 0.50 kDa). Peptides from a variety of sources are known to have nutraceutical effects due to their antioxidant, antimicrobial and immunomodulatory properties <sup>(88)</sup>. Regarding their influence on immunity, bioactive peptides can stimulate lymphocytes and thus the secretion of immunoglobulins <sup>(89,90)</sup>, which has been reported for large yellow croakers (*Pseudosciaena crocea* R.) fed a diet supplemented with a fish-protein hydrolysate assumed to contain bioactive peptides <sup>(77)</sup>. Thus, our results suggest that supplementation with a peptide-rich yeast extract could improve acquired humoral immunity and consequently fish defenses against pathogenic stresses. This hypothesis will need to be verified through a pathogenic challenge and a peptidomic analysis will have to be carried out in order to identify the bioactive peptides and characterize their activities.

Unlike previous studies that performed high-throughput sequencing transcriptomic analysis of fish, including rainbow trout <sup>(91,92)</sup>, only few genes were differentially expressed in the liver and distal intestine. This difference could be related to the timing of sampling, which occurred 24 h after the last meal. Thus, the modulations were likely related more to background changes in fish physiology than to short-term postprandial effects. While the PAP diet altered the transcriptomic profile of the liver, adding only 3% yeast extract to it appeared to restore a hepatic physiological response similar to that obtained with the CTL diet, which is consistent with the observed phenotypes. The transcriptomic response of the gut to the diets was less distinct, although most of the differentially expressed genes were observed in fish fed the PAP+YE or CTL diet. While analysis of plasma immune markers and intestinal histology studies did not provide clear evidence of inflammation, as confirmed by the lack of induction of key cytokines in the gut immune response, analysis of gene ontology terms and the literature revealed that a large proportion of the differentially expressed transcripts were related to inflammation and immune functions. In the liver, nearly half of the differentially expressed transcripts were assigned putatively to immune or inflammatory functions, and induced in fish fed the PAP diet

compared to those fed the CTL diet. Specifically, the analysis revealed the up-regulation of two acute phase proteins (*hpx*<sup>(93)</sup> and *α2m*<sup>(94)</sup>), as well as a transcriptional regulator of acute-phase responses (*foxa2*<sup>(95,96)</sup>). The proteoglycan 4 encoded by *prg4*, which has been shown to be responsible for activating and stimulating hepatic macrophages in rats<sup>(97)</sup>, and the enzyme encoded by *csgalnact2*, which is required for proteoglycan biosynthesis, particularly elongation during chondroitin sulfate synthesis, were also up-regulated in fish fed the PAP diet. In the distal intestine, effects associated with immune functions were prevalent in trout fed the PAP+YE diet, suggesting that the cytosolic fraction of yeast could have specifically targeted immune- or inflammation-related genes of the intestinal mucosa (i.e. *serping1*<sup>(98)</sup>, *apoa2*<sup>(99)</sup>, *mapk1b*<sup>(100)</sup>, and *c15orf48*<sup>(101)</sup>). Also, two of them were related to stimulation of T- and/or B-cells (i.e. *fut8*<sup>(102,103)</sup> and *cd3d*<sup>(104)</sup>). In the liver and distal intestine, the C3 component was the only complement member that was differentially expressed among the diet. The complement system plays a fundamental role in the innate immune system since it is involved in phagocytosis, inflammatory reactions and production of antibodies. Among the many proteins involved in activating the complement cascade, the C3 molecule is one of the most important<sup>(105)</sup>. In the present study, the dietary regulations of *c3* expression differed between these two tissues. While the liver was more sensitive to the PAP diet, the distal intestine was more sensitive to the PAP+YE diet. These results are consistent with an increase in expression of intestinal complement *c3* in response to the use of yeast in gilthead seabream<sup>(106,107)</sup>. In fish fed the diet PAP+YE, the transcriptomic response of the intestine also revealed the modulation of genes related to mechanisms of pathogen control or allergic reaction. Indeed, we observed an up-regulation of *ch25h*, the key enzyme in the production of 25-hydroxycholesterol, a powerful soluble antiviral factor that restricts the propagation of viruses<sup>(108)</sup> and that was induced in response to viral infections in Atlantic salmon<sup>(109)</sup>. Compared to the PAP diet, the PAP+YE diet modulated expression of antipathogen-related genes *mfap4* and *hrh1*. In Nile tilapia (*Oreochromis niloticus*), MFAP4 proteins are known to agglutinate and opsonize bacterial pathogens, which helps to prevent bacterial infections<sup>(110)</sup>. The histamine receptor 1, encoded by the *hrh1* gene, is an effector of the action of histamine on phagocyte function in mammals and fish<sup>(111,112)</sup>. Overall, our results indicate that including yeast in the diet of rainbow trout could strengthen defense capacities of the gut, which is one of the main contact and entry points of pathogens and allergens in the body. Of all the differentially expressed genes, selenoprotein S-like (*selenos*) varied the most in response to diet, and its expression was highly pronounced in the intestine in response to diets that contain terrestrial animal by-products. Selenos is a protein of the endoplasmic reticulum that is involved in reducing oxidative and endoplasmic reticulum stress<sup>(113)</sup>. The issue of whether PAP diets induce oxidative and endoplasmic reticulum stress remains to be investigated, since the transcriptomic analysis revealed no marker genes for stress that would support this hypothesis. We also observed the modulation of certain genes putatively involved in coagulation and blood healing in both the liver and

distal intestine. In the intestine, fish fed the PAP diet showed a down-regulation of coagulation markers *fbg*<sup>(114)</sup> and *cd9*<sup>(115)</sup>, suggesting a reduction in coagulation capacity. However, adding 3% yeast extract may have restored it, as indicated by the opposite effect of the PAP+YE diet on the expression of *fbg* in the intestine and a downregulation of anticoagulant *serpina10*<sup>(116)</sup> in the liver. Regarding the genes putatively assigned to metabolic functions, these were more particularly modulated in trout fed with PAP+YE feed compared to the CTL group (4 genes differentially expressed). As for the immune functions, it is difficult to conclude on the effects of yeast extract supplementation on metabolic functions. Mechanistic studies and plasma metabolite assays could eventually clarify the results obtained.

The analysis of small non-coding RNAs did not help to identify mechanisms that underlay the observed growth phenotypes. Under the study conditions (samples collected 24 hours after the last meal), few miRNAs were modulated in response to the diet (only four in the liver and none in the distal intestine). However, miR-217-5p varied the most in expression, which in mammals appears to target inflammatory mechanisms<sup>(117)</sup>. Its expression decreased greatly in response to the PAP+YE diet.

In conclusion, the study confirms the utility of adding a yeast product to improve the nutritional quality of fishmeal-free diets for rainbow trout. The mechanisms that underlay the decreased growth performance of fish fed a diet without fishmeal remain unclear. Based on the results obtained from the transcriptomic analysis, it would be relevant to include muscle in future studies to better understand the origin of protein retention variations between experimental diets. The results showed no consistent inflammatory reaction or metabolic disturbance, but they did suggest that the molecular response of fish to the fishmeal-free diets stimulates both innate and acquired defense mechanisms, including those that fight pathogens and allergens, as well as those that support tissue coagulation and healing processes. Supplementation with yeast extract could stimulate some of these mechanisms, which suggests that yeast products could increase the robustness and growth of rainbow trout. Since most of the genes differentially expressed in the liver and intestine were related to immunity or inflammatory response, it would be relevant to consider other lymphoid tissues such as the kidney, spleen or thymus that could be preferentially targeted by the yeast extract. In animal nutrition, yeast is considered beneficial for growth and health. The yeast extract used to supplement the PAP diet was the cytosolic fraction, rich in small peptides, free amino acids and some nucleotides. Thus, the observed effects on growth, intestinal histology and gene expression were likely due to the supply of specific bioactive peptides and free amino acids, which should be investigated in future studies.

## 5. Acknowledgment

We dedicate this study to Frank Sandres, who cared for the fish during this study and sadly passed away. We thank Anthony Lanuque for monitoring the growth experiment. We are grateful to the Genotoul bioinformatics platform Toulouse Occitanie (Bioinfo Genotoul, <https://doi.org/10.15454/1.5572369328961167E12>) for providing help, computing resources and storage resources. We would also like to thank Christophe Klopp for his advices in the analysis of the high-throughput sequencing data.

## **6. Financial support**

This study was financially supported by the iSlte E2S-UPPA project. Diogo Peixoto and Benjamin Costas were supported by FCT - Fundação para a Ciência e a Tecnologia, Portugal (UI/BD/150900/2021 and 2020.00290.CEECIND, respectively). This study also received funds from FCT within the scope of UIDB/04423/2020 and UIDP/04423/2020 granted to CIIMAR.

## **7. Conflict of Interest**

None.

## **8. Authorship**

Study design: SSC, NR, KP

Funding acquisition: SSC

Animal experiments: FT, PA

Feed formulation: FT, NR, SSC, KP, LF

Biological analyses: LF, DP, CT

Bioinformatics analyses: LF, SMH, CG, CK, JB

Statistical analysis: LF, CG, BC

Project administration and supervision: SSC, NR, KP

Writing - original draft: LF

Writing - review & editing: LF, SSC, KP, NR, BC, JB, DP, CT, CG, SMH, CK



## 9. References

1. OECD & Food and Agriculture Organization of the United Nations (2022) *OECD-FAO Agricultural Outlook 2022-2031*. OECD.
2. Fiorella KJ, Okronipa H, Baker K, et al. (2021) Contemporary aquaculture: implications for human nutrition. *Curr Opin Biotechnol* **70**, 83–90.
3. Council NR (2011) *Nutrient Requirements of Fish and Shrimp*. 13039. Washington, D.C.: National Academies Press.
4. Naylor RL, Goldberg RJ, Primavera JH, et al. (2000) Effect of aquaculture on world fish supplies. *Nature* **405**, 1017–1024. Nature Publishing Group.
5. Aas TS, Ytrestøyl T & Åsgård T (2019) Utilization of feed resources in the production of Atlantic salmon (*Salmo salar*) in Norway: An update for 2016. *Aquaculture Reports* **15**, 100216.
6. Gatlin III DM, Barrows FT, Brown P, et al. (2007) Expanding the utilization of sustainable plant products in aquafeeds: a review. *Aquaculture Research* **38**, 551–579.
7. Palma M, Bledsoe JW, Tavares LC, et al. (2021) Digesta and Plasma Metabolomics of Rainbow Trout Strains with Varied Tolerance of Plant-Based Diets Highlights Potential for Non-Lethal Assessments of Enteritis Development. *Metabolites* **11**. Multidisciplinary Digital Publishing Institute (MDPI).
8. Krogdahl Å, Penn M, Thorsen J, et al. (2010) Important antinutrients in plant feedstuffs for aquaculture: an update on recent findings regarding responses in salmonids. *Aquaculture Research* **41**, 333–344.
9. van Huis A & Oonincx DGAB (2017) The environmental sustainability of insects as food and feed. A review. *Agron. Sustain. Dev.* **37**, 43.
10. Hua K, Cobcroft JM, Cole A, et al. (2019) The Future of Aquatic Protein: Implications for Protein Sources in Aquaculture Diets. *One Earth* **1**, 316–329.
11. Quang Tran H, Van Doan H & Stejskal V (2022) Environmental consequences of using insect meal as an ingredient in aquafeeds: A systematic view. *Reviews in Aquaculture* **14**, 237–251.
12. Cho JH & Kim IH (2011) Fish meal – nutritive value. *Journal of Animal Physiology and Animal Nutrition* **95**, 685–692.
13. Dawood MAO & Koshio S (2020) Application of fermentation strategy in aquafeed for sustainable aquaculture. *Reviews in Aquaculture* **12**, 987–1002.
14. Kumar S, Sándor Zs J, Nagy Z, et al. (2017) Potential of processed animal protein versus soybean meal to replace fish meal in practical diets for European catfish (*Silurus glanis*): growth response and liver gene expression. *Aquaculture Nutrition* **23**, 1179–1189.
15. Bureau DP, Harris AM & Cho CY (1999) Apparent digestibility of rendered animal protein ingredients for rainbow trout (*Oncorhynchus mykiss*). *Aquaculture* **180**, 345–358.

16. Galkanda-Arachchige H, Wilson A & Davis D (2019) Success of fishmeal replacement through poultry by-product meal in aquaculture feed formulations: a meta-analysis. *Reviews in Aquaculture* **12**.
17. Hatlen B, Oaland Ø, Tvenning L, et al. (2013) Growth performance, feed utilization and product quality in slaughter size Atlantic salmon (*Salmo salar* L.) fed a diet with porcine blood meal, poultry oil and salmon oil. *Aquaculture Nutrition* **19**.
18. Lu F, Haga Y & Satoh S (2014) Effects of replacing fish meal with rendered animal protein and plant protein sources on growth response, biological indices, and amino acid availability for rainbow trout *Oncorhynchus mykiss*. *Fisheries Science* **81**.
19. Burdick Sanchez NC, Broadway PR & Carroll JA (2021) Influence of Yeast Products on Modulating Metabolism and Immunity in Cattle and Swine. *Animals (Basel)* **11**, 371.
20. Vohra A, Syal P & Madan A (2016) Probiotic yeasts in livestock sector. *Animal Feed Science and Technology* **219**, 31–47.
21. Jamal M, Mahdy M, Harbi M, et al. (2022) Use of yeasts in aquaculture nutrition and immunostimulation: A review. *Journal of Applied Biology & Biotechnology* **10**, 59–65.
22. Agboola JO, Øverland M, Skrede A, et al. (2021) Yeast as major protein-rich ingredient in aquafeeds: a review of the implications for aquaculture production. *Reviews in Aquaculture* **13**, 949–970.
23. Broadway PR, Carroll JA & Sanchez NCB (2015) Live Yeast and Yeast Cell Wall Supplements Enhance Immune Function and Performance in Food-Producing Livestock: A Review (†),(‡). *Microorganisms* **3**, 417–427.
24. Richard N, Costas B, Machado M, et al. (2021) Inclusion of a protein-rich yeast fraction in rainbow trout plant-based diet: Consequences on growth performances, flesh fatty acid profile and health-related parameters. *Aquaculture* **544**, 737132.
25. Zhao L, Wang W, Huang X, et al. (2017) The effect of replacement of fish meal by yeast extract on the digestibility, growth and muscle composition of the shrimp *Litopenaeus vannamei*. *Aquaculture Research* **48**, 311–320.
26. Wood K, Rawles S, Thompson K, et al. (2012) Growth and Body Composition of Nile Tilapia, *Oreochromis niloticus*, Fry Fed Organic Diets Containing Yeast Extract and Soybean Meal as Replacements for Fish Meal, with and without Supplemental Lysine and Methionine. *Journal of the World Aquaculture Society* **43**.
27. Liu D, Ding L, Sun J, et al. (2016) Yeast cell disruption strategies for recovery of intracellular bio-active compounds — A review. *Innovative Food Science & Emerging Technologies* **36**, 181–192.
28. Martin SAM & Król E (2017) Nutrigenomics and immune function in fish: new insights from omics technologies. *Developmental & Comparative Immunology* **75**, 86–98.
29. Porter D, Peggs D, McGurk C, et al. (2022) Immune responses to prebiotics in farmed salmonid fish: How transcriptomic approaches help interpret responses. *Fish & Shellfish Immunology* **127**, 35–47.

30. Bizuayehu TT & Babiak I (2014) MicroRNA in Teleost Fish. *Genome Biol Evol* **6**, 1911–1937.
31. IE Numea (2021) Fish nutrition and aquaculture. INRAE.
32. Choubert G, De La Noüe J & Luquet P (1982) Digestibility in fish: Improved device for the automatic collection of feces. *Aquaculture* **29**, 185–189.
33. Kjeldahl J (1883) A New Method for the Determination of Nitrogen in Organic Matter. *Fresenius, Zeitschrift f. anal. Chemie* **22**, 366–382.
34. Folch J, Lees M & Sloane Stanley GH (1957) A simple method for the isolation and purification of total lipides from animal tissues. *J Biol Chem* **226**, 497–509.
35. Peixoto D, Machado M, Azeredo R, et al. (2022) Chronic Inflammation Modulates Opioid Receptor Gene Expression and Triggers Respiratory Burst in a Teleost Model. *Biology* **11**, 764. Multidisciplinary Digital Publishing Institute.
36. Quade MJ & Roth JA (1997) A rapid, direct assay to measure degranulation of bovine neutrophil primary granules. *Vet Immunol Immunopathol* **58**, 239–248.
37. Sunyer JO & Tort L (1995) Natural hemolytic and bactericidal activities of sea bream *Sparus aurata* serum are effected by the alternative complement pathway. *Vet Immunol Immunopathol* **45**, 333–345.
38. Ewels PA, Peltzer A, Fillinger S, et al. (2020) The nf-core framework for community-curated bioinformatics pipelines. *Nat Biotechnol* **38**, 276–278.
39. Dobin A, Davis CA, Schlesinger F, et al. (2013) STAR: ultrafast universal RNA-seq aligner. *Bioinformatics* **29**, 15–21.
40. Li B & Dewey CN (2011) RSEM: accurate transcript quantification from RNA-Seq data with or without a reference genome. *BMC Bioinformatics* **12**, 323.
41. Martin M (2011) Cutadapt removes adapter sequences from high-throughput sequencing reads. *EMBnet.journal* **17**, 10–12.
42. Desvignes T, Batzel P, Sydes J, et al. (2019) miRNA analysis with Prost! reveals evolutionary conservation of organ-enriched expression and post-transcriptional modifications in three-spined stickleback and zebrafish. *Sci Rep* **9**, 3913.
43. Cardona E, Guyomar C, Desvignes T, et al. (2021) Circulating miRNA repertoire as a biomarker of metabolic and reproductive states in rainbow trout. *BMC Biol* **19**, 235.
44. Love MI, Huber W & Anders S (2014) Moderated estimation of fold change and dispersion for RNA-seq data with DESeq2. *Genome Biol* **15**, 550.
45. R. Gentleman VC (2017) genefilter. Bioconductor.
46. R: The R Project for Statistical Computing. <https://www.r-project.org/> (accessed January 2023).
47. Alexa A & Rahnenfuhrer J (2022) topGO: Enrichment Analysis for Gene Ontology. Bioconductor version: Release (3.15).

48. Li H, Handsaker B, Wysoker A, et al. (2009) The Sequence Alignment/Map format and SAMtools. *Bioinformatics* **25**, 2078–2079.
49. Lazzarotto V, Médale F, Larroquet L, et al. (2018) Long-term dietary replacement of fishmeal and fish oil in diets for rainbow trout (*Oncorhynchus mykiss*): Effects on growth, whole body fatty acids and intestinal and hepatic gene expression. *PLOS ONE* **13**, e0190730. Public Library of Science.
50. Lansard M, Panserat S, Seiliez I, et al. (2009) Hepatic protein kinase B (Akt)–target of rapamycin (TOR)–signalling pathways and intermediary metabolism in rainbow trout (*Oncorhynchus mykiss*) are not significantly affected by feeding plant-based diets. *Br J Nutr* **102**, 1564.
51. Bureau D (2006) Rendered products in fish aquaculture feeds. *Essential Rendering: All About the Animal By-products Industry*.
52. Oliva-Teles A, Enes P & Peres H (2015) 8 - Replacing fishmeal and fish oil in industrial aquafeeds for carnivorous fish. In *Feed and Feeding Practices in Aquaculture*, pp. 203–233 [Davis DA, editor]. Oxford: Woodhead Publishing.
53. Wilfart A, Garcia-Launay F, Terrier F, et al. (2023) A step towards sustainable aquaculture: Multiobjective feed formulation reduces environmental impacts at feed and farm levels for rainbow trout. *Aquaculture* **562**, 738826.
54. Moutinho S, Martínez-Llorens S, Tomás-Vidal A, et al. (2017) Meat and bone meal as partial replacement for fish meal in diets for gilthead seabream (*Sparus aurata*) juveniles: Growth, feed efficiency, amino acid utilization, and economic efficiency. *Aquaculture* **468**, 271–277.
55. Steffens W (1994) Replacing fish meal with poultry by-product meal in diets for rainbow trout, *Oncorhynchus mykiss*. *Aquaculture* **124**, 27–34.
56. Parés-Sierra G, Durazo E, Ponce MA, et al. (2014) Partial to total replacement of fishmeal by poultry by-product meal in diets for juvenile rainbow trout (*Oncorhynchus mykiss*) and their effect on fatty acids from muscle tissue and the time required to retrieve the effect. *Aquaculture Research* **45**, 1459–1469.
57. Lee K-J, Dabrowski K, Blom JH, et al. (2001) Replacement of Fish Meal by a Mixture of Animal By-Products in Juvenile Rainbow Trout Diets. *North American Journal of Aquaculture* **63**, 109–117. Taylor & Francis.
58. Karapanagiotidis IT, Psoufakis P, Mente E, et al. (2019) Effect of fishmeal replacement by poultry by-product meal on growth performance, proximate composition, digestive enzyme activity, haematological parameters and gene expression of gilthead seabream (*Sparus aurata*). *Aquaculture Nutrition* **25**, 3–14.
59. Soares M, Rezende PC, Corrêa NM, et al. (2020) Protein hydrolysates from poultry by-product and swine liver as an alternative dietary protein source for the Pacific white shrimp. *Aquaculture Reports* **17**, 100344.
60. Broadway PR, Carroll JA & Sanchez NCB (2015) Live Yeast and Yeast Cell Wall Supplements Enhance Immune Function and Performance in Food-Producing Livestock: A Review †,‡. *Microorganisms* **3**, 417–427. Multidisciplinary Digital Publishing Institute.

61. Davies S, Gouveia A, Laporte J, et al. (2009) Nutrient digestibility profile of premium (category III grade) animal protein by-products for temperate marine fish species (European sea bass, gilthead sea bream and turbot). *Aquaculture Research* **40**, 1759–1769.
62. Cruz-Suárez LE, Nieto-López M, Guajardo-Barbosa C, et al. (2007) Replacement of fish meal with poultry by-product meal in practical diets for *Litopenaeus vannamei*, and digestibility of the tested ingredients and diets. *Aquaculture* **272**, 466–476.
63. Hernández C, Olvera-Novoa M a., Hardy R w., et al. (2010) Complete replacement of fish meal by porcine and poultry by-product meals in practical diets for fingerling Nile tilapia *Oreochromis niloticus*: digestibility and growth performance. *Aquaculture Nutrition* **16**, 44–53.
64. Liu L, Fang J, Liang X-F, et al. (2020) Nucleotide promotes feed intake and protein utilization via regulating the gene expression of feeding and nitrogen metabolism in juvenile Chinese perch (*Siniperca chuatsi*). *Aquaculture Nutrition* **26**, 1702–1712.
65. Oliva-Teles A & Gonçalves P (2001) Partial replacement of fishmeal by brewers yeast (*Saccaromyces cerevisiae*) in diets for sea bass (*Dicentrarchus labrax*) juveniles. *Aquaculture* **202**, 269–278.
66. De Francesco M, Parisi G, Pérez-Sánchez J, et al. (2007) Effect of high-level fish meal replacement by plant proteins in gilthead sea bream (*Sparus aurata*) on growth and body/fillet quality traits. *Aquaculture Nutrition* **13**, 361–372.
67. Kaushik SJ, Covès D, Dutto G, et al. (2004) Almost total replacement of fish meal by plant protein sources in the diet of a marine teleost, the European seabass, *Dicentrarchus labrax*. *Aquaculture* **230**, 391–404.
68. Hu L, Yun B, Xue M, et al. (2013) Effects of fish meal quality and fish meal substitution by animal protein blend on growth performance, flesh quality and liver histology of Japanese seabass (*Lateolabrax japonicus*). *Aquaculture* **372–375**, 52–61.
69. Refstie S, Korsøen ØJ, Storebakken T, et al. (2000) Differing nutritional responses to dietary soybean meal in rainbow trout (*Oncorhynchus mykiss*) and Atlantic salmon (*Salmo salar*). *Aquaculture* **190**, 49–63.
70. Ouraji H, Zaretabar A & Rahmani H (2013) Performance of rainbow trout (*Oncorhynchus mykiss*) fingerlings fed diets containing different levels of faba bean (*Vicia faba*) meal. *Aquaculture* **416–417**, 161–165.
71. Øverland M, Karlsson A, Mydland LT, et al. (2013) Evaluation of *Candida utilis*, *Kluyveromyces marxianus* and *Saccharomyces cerevisiae* yeasts as protein sources in diets for Atlantic salmon (*Salmo salar*). *Aquaculture* **402–403**, 1–7.
72. Olvera-Novoa M a., Martínez-Palacios C a. & Olivera-Castillo L (2002) Utilization of torula yeast (*Candida utilis*) as a protein source in diets for tilapia (*Oreochromis mossambicus* Peters) fry. *Aquaculture Nutrition* **8**, 257–264.
73. Tacchi L, Bickerdike R, Douglas A, et al. (2011) Transcriptomic responses to functional feeds in Atlantic salmon (*Salmo salar*). *Fish & Shellfish Immunology* **31**, 704–715.

74. Andrews SR, Sahu NP, Pal AK, et al. (2009) Haematological modulation and growth of *Labeo rohita* fingerlings: effect of dietary mannan oligosaccharide, yeast extract, protein hydrolysate and chlorella. *Aquaculture Research* **41**, 61–69.
75. Rolland M, Larsen BK, Holm J, et al. (2015) Effect of plant proteins and crystalline amino acid supplementation on postprandial plasma amino acid profiles and metabolic response in rainbow trout (*Oncorhynchus mykiss*). *Aquacult Int* **23**, 1071–1087.
76. Yuan X-Y, Jiang G-Z, Wang C-C, et al. (2019) Effects of partial replacement of fish meal by yeast hydrolysate on antioxidant capability, intestinal morphology, and inflammation-related gene expression of juvenile Jian carp (*Cyprinus carpio* var. Jian). *Fish Physiol Biochem* **45**, 187–197.
77. Tang H, Wu T, Zhao Z, et al. (2008) Effects of fish protein hydrolysate on growth performance and humoral immune response in large yellow croaker (*Pseudosciaena crocea* R.). *J. Zhejiang Univ. Sci. B* **9**, 684–690.
78. Burrells C, Williams PD, Southgate PJ, et al. (2001) Dietary nucleotides: a novel supplement in fish feeds: 2. Effects on vaccination, salt water transfer, growth rates and physiology of Atlantic salmon (*Salmo salar* L.). *Aquaculture* **199**, 171–184.
79. Cheng Z, Buentello A & Gatlin DM (2011) Dietary nucleotides influence immune responses and intestinal morphology of red drum *Sciaenops ocellatus*. *Fish Shellfish Immunol* **30**, 143–147.
80. Hossain MS, Koshio S, Ishikawa M, et al. (2016) Comparison of the effects of inosine and inosine monophosphate on growth, immune response, stress resistance and gut morphology of juvenile red sea bream, *Pagrus major*. *Aquaculture* **458**, 64–74. Amsterdam: Elsevier.
81. Savaiano DA & Clifford AJ (1978) Absorption, tissue incorporation and excretion of free [dietary] purine bases in the rat. *Nutrition Reports International (USA)*.
82. Burrige PW, Woods RA & Henderson JF (1976) Utilization of dietary nucleic acid purines for nucleotide and nucleic acid synthesis in the mouse. *Can. J. Biochem.* **54**, 500–506.
83. Esmaeili M (2021) Blood Performance: A New Formula for Fish Growth and Health. *Biology* **10**, 1236. Multidisciplinary Digital Publishing Institute.
84. Raskovic B, Stankovic M, Markovic Z, et al. (2011) Histological methods in the assessment of different feed effects on liver and intestine of fish. *J Agric Sci BGD* **56**, 87–100.
85. Baeverfjord G & Krogdahl A (1996) Development and regression of soybean meal induced enteritis in Atlantic salmon, *Salmo salar* L., distal intestine: a comparison with the intestines of fasted fish. *Journal of Fish Diseases* **19**, 375–387.
86. Sahlmann C, Sutherland BJG, Kortner TM, et al. (2013) Early response of gene expression in the distal intestine of Atlantic salmon (*Salmo salar* L.) during the development of soybean meal induced enteritis. *Fish & Shellfish Immunology* **34**, 599–609.
87. van den Ingh TSGAM, Krogdahl Å, Olli JJ, et al. (1991) Effects of soybean-containing diets on the proximal and distal intestine in Atlantic salmon (*Salmo salar*): a morphological study. *Aquaculture* **94**, 297–305.
88. Sánchez A & Vázquez A (2017) Bioactive peptides: A review. *Food Quality and Safety* **1**, 29–46.

89. Martínez-Augustin O, Rivero-Gutiérrez B, Mascaraque C, et al. (2014) Food Derived Bioactive Peptides and Intestinal Barrier Function. *International Journal of Molecular Sciences* **15**, 22857–22873. Multidisciplinary Digital Publishing Institute.
90. Cicero AFG, Fogacci F & Colletti A (2017) Potential role of bioactive peptides in prevention and treatment of chronic diseases: a narrative review. *British Journal of Pharmacology* **174**, 1378–1394.
91. He Y, Ye G, Chi S, et al. (2020) Integrative Transcriptomic and Small RNA Sequencing Reveals Immune-Related miRNA–mRNA Regulation Network for Soybean Meal-Induced Enteritis in Hybrid Grouper, *Epinephelus fuscoguttatus*♀ × *Epinephelus lanceolatus*♂. *Frontiers in Immunology* **11**.
92. Abernathy J, Brezas A, Snekvik KR, et al. (2017) Integrative functional analyses using rainbow trout selected for tolerance to plant diets reveal nutrigenomic signatures for soy utilization without the concurrence of enteritis. *PLOS ONE* **12**, e0180972. Public Library of Science.
93. Yin X, Li X, Chen N, et al. (2021) Hemopexin as an acute phase protein regulates the inflammatory response against bacterial infection of Nile tilapia (*Oreochromis niloticus*). *International Journal of Biological Macromolecules* **187**, 166–178.
94. Ho A-S, Cheng C-C, Lee S-C, et al. (2010) Novel biomarkers predict liver fibrosis in hepatitis C patients: alpha 2 macroglobulin, vitamin D binding protein and apolipoprotein AI. *J Biomed Sci* **17**, 58.
95. Chen G, Wan H, Luo F, et al. (2010) Foxa2 Programs Th2 Cell-Mediated Innate Immunity in the Developing Lung. *The Journal of Immunology* **184**, 6133–6141. American Association of Immunologists.
96. Xie W, Xue Y, Zhang H, et al. (2022) A high-concentrate diet provokes inflammatory responses by downregulating Forkhead box protein A2 (FOXA2) through epigenetic modifications in the liver of dairy cows. *Gene* **837**, 146703.
97. Laskin JD, Dokidis A, Gardner CR, et al. (1991) Changes in sulfated proteoglycan production after activation of rat liver macrophages. *Hepatology* **14**, 306–312.
98. Beinrohr L, Murray-Rust TA, Dyksterhuis L, et al. (2011) Chapter Four - Serpins and the Complement System. In *Methods in Enzymology*, vol. 499, pp. 55–75 [Whisstock JC, Bird PI, editors]. Academic Press.
99. Yang M, Liu Y, Dai J, et al. (2018) Apolipoprotein A-II induces acute-phase response associated AA amyloidosis in mice through conformational changes of plasma lipoprotein structure. *Sci Rep* **8**, 5620.
100. Yamaguchi T, Miyashita C, Koyano S, et al. (2009) JNK-binding protein 1 regulates NF-κB activation through TRAF2 and TAK1. *Cell Biology International* **33**, 364–368.
101. Lee CQE, Kerouanton B, Chothani S, et al. (2021) Coding and non-coding roles of MOCCI (C15ORF48) coordinate to regulate host inflammation and immunity. *Nat Commun* **12**, 2130. Nature Publishing Group.

102. Fujii H, Shinzaki S, Iijima H, et al. (2016) Core Fucosylation on T Cells, Required for Activation of T-Cell Receptor Signaling and Induction of Colitis in Mice, Is Increased in Patients With Inflammatory Bowel Disease. *Gastroenterology* **150**, 1620–1632.
103. Cantero-Recasens G, Burballa C, Ohkawa Y, et al. (2022) The ulcerative colitis-associated gene FUT8 regulates the quantity and quality of secreted mucins. *Proc. Natl. Acad. Sci. U.S.A.* **119**, e2205277119.
104. Liang G, Malmuthuge N, Bao H, et al. (2016) Transcriptome analysis reveals regional and temporal differences in mucosal immune system development in the small intestine of neonatal calves. *BMC Genomics* **17**, 602.
105. Ricklin D, Reis ES, Mastellos DC, et al. (2016) Complement component C3 – The “Swiss Army Knife” of innate immunity and host defense. *Immunological Reviews* **274**, 33–58.
106. Reyes-Becerril M, Angulo C, Angulo M, et al. (2021) Probiotic properties of *Debaryomyces hansenii* BCS004 and their immunostimulatory effect in supplemented diets for gilthead seabream (*Sparus aurata*). *Aquaculture Research* **52**, 2715–2726.
107. Reyes-Becerril M, Salinas I, Cuesta A, et al. (2008) Oral delivery of live yeast *Debaryomyces hansenii* modulates the main innate immune parameters and the expression of immune-relevant genes in the gilthead seabream (*Sparus aurata* L.). *Fish & Shellfish Immunology* **25**, 731–739.
108. Liu S-Y, Aliyari R, Chikere K, et al. (2013) Interferon-Inducible Cholesterol-25-Hydroxylase Broadly Inhibits Viral Entry by Production of 25-Hydroxycholesterol. *Immunity* **38**, 92–105.
109. Krasnov A, Johansen L-H, Karlsen C, et al. (2021) Transcriptome Responses of Atlantic Salmon (*Salmo salar* L.) to Viral and Bacterial Pathogens, Inflammation, and Stress. *Front. Immunol.* **12**, 705601.
110. Wu H, Mu L, Yin X, et al. (2020) A microfibril-associated glycoprotein 4 (MFAP4) from Nile tilapia (*Oreochromis niloticus*) possesses agglutination and opsonization ability to bacterial pathogens. *Fish & Shellfish Immunology* **104**, 182–191.
111. Smolinska S, Winiarska E, Globinska A, et al. (2022) Histamine: A Mediator of Intestinal Disorders—A Review. *Metabolites* **12**, 895. Multidisciplinary Digital Publishing Institute.
112. Galindo-Villegas J, Garcia-Garcia E & Mulero V (2016) Role of histamine in the regulation of intestinal immunity in fish. *Developmental & Comparative Immunology* **64**, 178–186.
113. Addinsall AB, Wright CR, Andrikopoulos S, et al. (2018) Emerging roles of endoplasmic reticulum-resident selenoproteins in the regulation of cellular stress responses and the implications for metabolic disease. *Biochemical Journal* **475**, 1037–1057.
114. Pålman LI, Mörgelin M, Kasetty G, et al. (2013) Antimicrobial activity of fibrinogen and fibrinogen-derived peptides – a novel link between coagulation and innate immunity. *Thromb Haemost* **109**, 930–939. Schattauer GmbH.
115. Zhang J, Dong J, Gu H, et al. (2012) CD9 Is Critical for Cutaneous Wound Healing through JNK Signaling. *Journal of Investigative Dermatology* **132**, 226–236.



116. Huang X, Swanson R, Broze GJ, et al. (2008) Kinetic Characterization of the Protein Z-dependent Protease Inhibitor Reaction with Blood Coagulation Factor Xa. *Journal of Biological Chemistry* **283**, 29770–29783.
117. Shamran H, Singh NP, Zumbun EE, et al. (2017) Fatty acid amide hydrolase (FAAH) blockade ameliorates experimental colitis by altering microRNA expression and suppressing inflammation. *Brain, Behavior, and Immunity* **59**, 10–20.

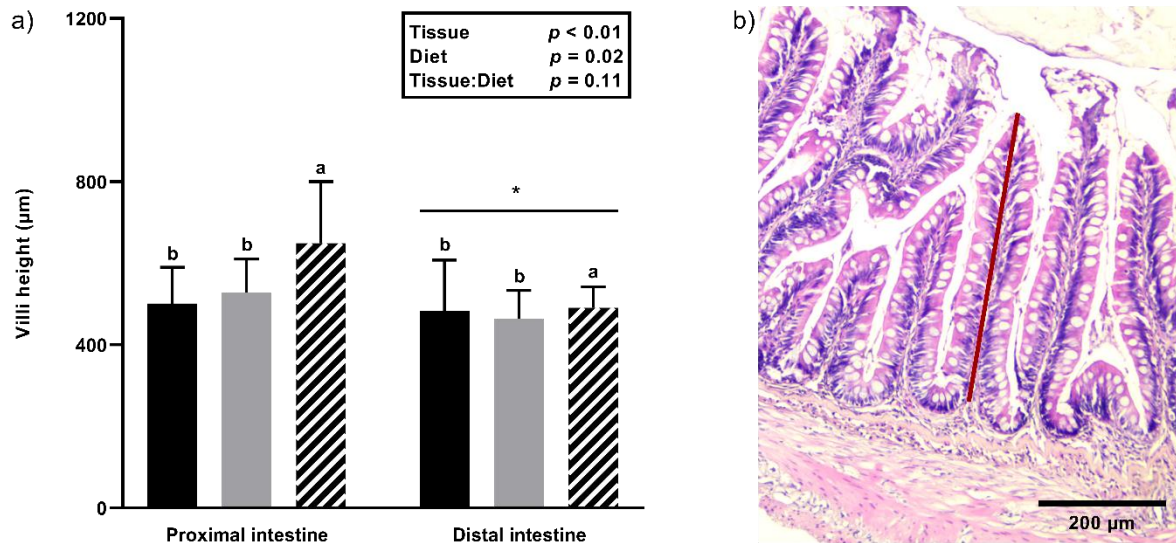


Fig. 1. Height of villi in the proximal and distal intestine in rainbow trout after 12 weeks of feeding (a) (■ fish fed the CTL diet; □ fish fed the PAP diet; ▨ fish fed the PAP+YE diet). Villi height was measured from the intestinal epithelium to their apical end, located towards the lumen, as indicated by the red line (b) (n=12 fish per diet). Data are represented as the mean and standard deviation, and were analyzed using a two-way ANOVA. Letters indicate significant differences between diets. \* indicates significant differences between tissues. CTL, commercial-like diet containing fishmeal and fish oil; PAP, processed animal protein diet; PAP+YE, processed animal protein feed supplemented with 3% yeast extract.

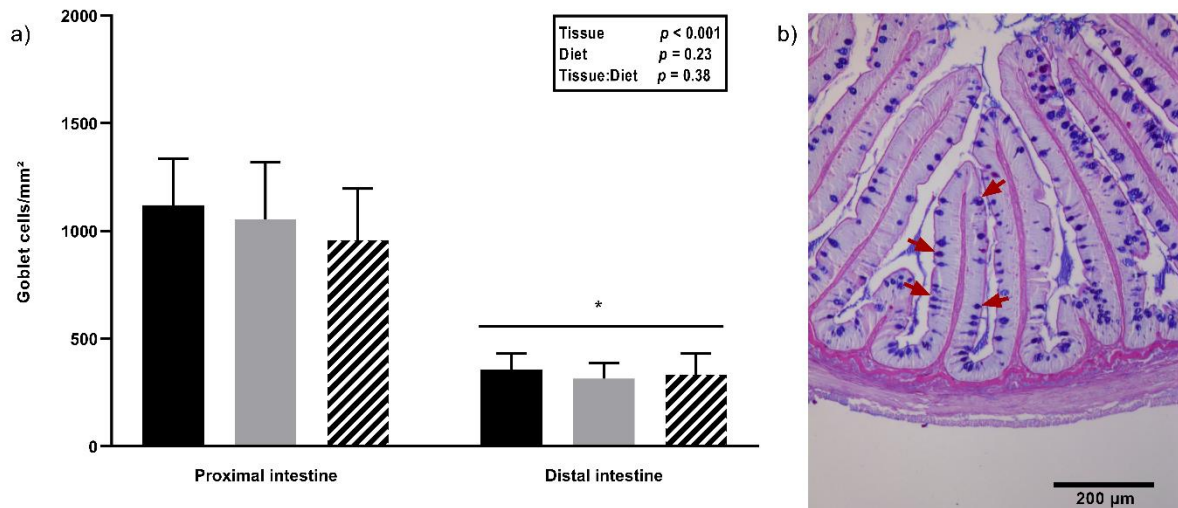


Fig. 2. Number of goblet cells per  $\text{mm}^2$  in the proximal and distal intestine in rainbow trout after 12 weeks of feeding (a) (■ fish fed the CTL diet; □ fish fed the PAP diet; ▨ fish fed the PAP+YE diet). Goblet cells are indicated by red arrows and were counted and related to the area of the villi (b) ( $n=12$  fish per diet). Data are represented by as mean and standard deviation, and were analyzed using a two-way ANOVA. \* indicates significant differences between tissues. CTL, commercial-like diet containing fishmeal and fish oil; PAP, processed animal protein diet; PAP+YE, processed animal protein feed supplemented with 3% yeast extract.

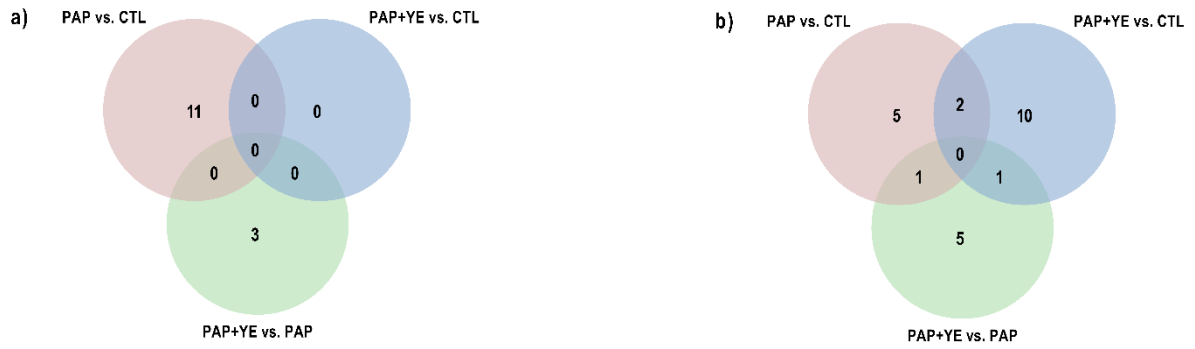


Fig. 3. Venn diagrams of RNA sequencing analysis in (a) the liver and (b) distal intestine of rainbow trout fed one of three experimental diets for 12 weeks. Each diagram summarizes the total number of differentially expressed genes in each tissue, the number of differentially expressed genes in each comparison and the common genes (in overlapping regions). CTL, commercial-like diet containing fishmeal and fish oil; PAP, processed animal protein diet; PAP+YE, processed animal protein feed supplemented with 3% yeast extract.

**Table 1.** Formulation and proximate composition of experimental diets.

	CTL	PAP	PAP+YE
<b>Ingredients (%)</b>			
Fishmeal	19.0	---	---
Dehydrated poultry protein	---	10.0	10.0
Hydrolyzed feather meal	---	6.0	6.0
Poultry and pork blood meal	---	1.0	1.0
Yeast extract (YE)	---	---	3.0
Corn gluten	15.0	17.9	16.0
Soy protein concentrate	14.0	11.0	12.0
Soybean meal	12.0	10.5	8.3
Whole wheat	10.8	9.2	13.0
Faba bean	8.0	12.0	8.0
Rapeseed oil	12.2	10.5	10.5
Fish oil	7.0	7.9	7.9
L-lysine		0.3	0.5
L-methionine		0.3	0.3
Soy lecithin		0.5	0.4
Vitamin premix <sup>1</sup>	1.0	1.0	1.0
Dicalcium Phosphate		1.0	1.0
Mineral premix <sup>2</sup>	1.0	1.0	1.0
Yttrium oxyde	0.1	0.1	0.1
<b>Proximate composition<sup>3</sup></b>			
Dry matter (%)	97.1	97.4	97.2
Protein (%DM)	46.9	46.5	46.3
Lipid (%DM)	22.1	21.6	20.8
Energy (kJ/g DM)	25.0	25.1	24.9
Ash (%DM)	6.8	5.5	5.6
Starch (%DM)	12.1	13.5	14.2

CTL, commercial-like diet containing fishmeal and fish oil; PAP, processed animal protein diet; PAP+YE, processed animal protein diet supplemented with 3% of yeast extract; DM, dry matter.

<sup>1</sup> Provided per 100 g of premix: vitamin A 500 000 IU, vitamin D3 250000 IU, vitamin E 5 00 mg, vitamin C 1429 mg, vitamin B1 10 mg, vitamin B2 50 mg, vitamin B3 100 mg, vitamin B5 200 mg, vitamin B6 30 mg, vitamin B7 3000 mg, vitamin B8 100 mg, vitamin B9 10 mg, vitamin B12 100 mg, vitamin K3 200 mg, folic acid 10 mg, biotin 100 mg, choline chloride 16 700 mg, cellulose 76 921mg.

<sup>2</sup> Provided per 100 g of premix: calcium hydrogen phosphate 49 478 mg, calcium carbonate 21 500 mg, sodium chloride 4000 mg, potassium chloride 9000 mg, magnesium oxide 12 400 mg, iron sulphate 2000 mg, zinc sulphate 900 mg, manganese sulphate 300 mg, copper sulphate 300 mg, cobalt chloride 2 mg, potassium iodide 15 mg, selenite sodium 5 mg, fluoride sodium 100 mg.

<sup>3</sup> Analyzed values

**Table 2.** Total and free amino acid content of experimental diets.

AA (g/100g)	Total amino acids			Free amino acids		
	CTL	PAP	PAP+YE	CTL	PAP	PAP+YE
Alanine	2.48	2.63	2.69	0.05	0.05	0.14
Arginine	2.44	2.63	2.64	0.07	0.08	0.11
Aspartic acid	3.67	3.53	3.60	0.03	0.03	0.07
Cysteine + Cystine	0.59	0.78	0.88	---	0.01	0.01
Glutamic acid	6.83	7.05	7.10	0.05	0.05	0.22
Glycine	1.99	2.40	2.46	0.02	0.02	0.03
Histidine	0.88	0.88	0.92			
Hydroxyproline	---	0.27	---			
Isoleucine	1.81	1.85	1.90	0.02	---	0.06
Leucine	4.13	4.51	4.50	0.05	0.05	0.12
Lysine	2.28	1.99	2.30	0.07	0.25	0.48
Methionine	0.87	0.91	0.99	0.02	0.19	0.26
Ornithine	---	---	---	0.02	0.01	0.02
Phenylalanine	2.16	2.35	2.38	0.04	0.03	0.07
Proline	2.35	3.15	3.05	0.02	0.02	0.06
Serine	1.96	2.46	2.53	0.02	0.02	0.04
Taurine	---	---	---	0.06	0.03	0.03
Threonine	1.59	1.64	1.73	0.02	0.02	0.05
Tryptophan	0.52	0.46	0.49	---	0.01	0.02
Tyrosine	1.56	1.70	1.66	0.02	0.02	0.05
Valine	2.04	2.30	2.39	0.03	0.03	0.08

CTL, commercial-like diet containing fishmeal and fish oil; PAP, processed animal protein diet; PAP+YE, processed animal protein diet supplemented with 3% of yeast extract.

**Table 3.** 3'-nucleotide contents of experimental diets.

<b>3'-nucleotides (<math>\mu\text{g/g}</math>)</b>	<b>CTL</b>	<b>PAP</b>	<b>PAP+YE</b>
Guanosine-3'-monophosphate	2230	1950	2190
Adenosine-3'-monophosphate	1640	853	1030
Cytidine-3'-monophosphate	1820	1250	1660
Uridine-3'-monophosphate	2080	1310	1660
<b>Total</b>	<b>7770</b>	<b>5360</b>	<b>6540</b>

CTL, commercial-like diet containing fishmeal and fish oil; PAP, processed animal protein diet; PAP+YE, processed animal protein diet supplemented with 3% of yeast extract.



**Table 4.** Nutrients and energy apparent digestibility coefficients (%).

	CTL		PAP		PAP+YE		p-value
	Mean	STD	Mean	STD	Mean	STD	
ADC (%)							
Dry matter	81.5 <sup>c</sup>	0.24	84.6 <sup>a</sup>	0.15	82.9 <sup>b</sup>	0.20	<0.001
Protein	90.7 <sup>b</sup>	0.42	91.6 <sup>a</sup>	0.27	91.1 <sup>ab</sup>	0.35	0.04
Lipid	93.8	1.89	94.5	0.48	93.6	0.05	0.56
Ash	43.8	1.44	51.8	0.92	44.2	1.22	0.08
Starch	93.8	0.64	95.3	0.62	95.2	0.83	0.08
Energy	87.5 <sup>b</sup>	0.63	88.9 <sup>a</sup>	0.39	87.5 <sup>b</sup>	0.61	0.03

CTL, commercial-like diet containing fishmeal and fish oil; PAP, processed animal protein diet; PAP+YE, processed animal protein diet supplemented with 3% of yeast extract; ADC, apparent digestibility coefficients. Data are presented by the mean  $\pm$  standard deviation STD (n=3 per condition). Degrees of significance (p-value) were estimated with a one-way ANOVA followed by a Tukey's test, or a Kruskal-Wallis test with a significance level at 0.05. a, ab, b, c Statistical differences are indicated by letters.



**Table 5.** Growth performances and consumption parameters.

	CTL		PAP		PAP+YE		p-value
	Mean	STD	Mean	STD	Mean	STD	
Initial body weight (g)	36.7	1.98	36.6	1.00	37.1	2.32	0.99
Final body weight (g)	230.5 <sup>a</sup>	7.6	182.3 <sup>c</sup>	13.5	206.7 <sup>b</sup>	14.2	0.01
SGR (day <sup>-1</sup> )	2.19 <sup>a</sup>	0.05	1.91 <sup>b</sup>	0.12	2.04 <sup>ab</sup>	0.05	0.02
FE	1.16	0.01	0.99	0.04	1.15	0.03	0.06
DFI (%/day)	1.49 <sup>b</sup>	0.01	1.61 <sup>a</sup>	0.04	1.44 <sup>b</sup>	0.04	0.006
HSI (%)	1.18	0.20	1.31	0.22	1.36	0.24	0.18
VSI (%)	13.70	2.10	12.97	1.39	14.09	2.19	0.47
Condition factor K	1.65	0.14	1.62	0.13	1.58	0.17	0.67

CTL, commercial-like diet containing fishmeal and fish oil; PAP, processed animal protein diet; PAP+YE, processed animal protein diet supplemented with 3% of yeast extract; SGR, specific growth rate; FE, feed efficiency; DFI, daily feed intake; HSI, hepatosomatic index; VSI, viscerosomatic index. Data are presented by the mean  $\pm$  standard deviation STD (n=3 per condition). Degrees of significance (p-value) were estimated with a one-way ANOVA followed by a Tukey's test, or a Kruskal-Wallis test with a significance level at 0.05. a, ab, b, c Statistical differences are indicated by letters.



**Table 6.** Final whole-body composition.

	CTL		PAP		PAP+YE		<i>P-value</i>
	Mean	STD	Mean	STD	Mean	STD	
Dry matter (g)	34.13	0.22	34.55	1.72	34.48	1.35	0.91
Protein (g)	15.72 <sup>a</sup>	0.16	14.61 <sup>c</sup>	0.19	15.17 <sup>b</sup>	0.06	<0.001
Lipid (g)	17.52	0.26	19.76	3.58	19.03	1.62	0.51
Energy (KJ·g <sup>-1</sup> )	10.34	0.15	10.62	0.66	10.48	0.57	0.81
Ash (g)	2.00	0.04	1.98	0.07	1.98	0.06	0.94

CTL, commercial-like diet containing fishmeal and fish oil; PAP, processed animal protein diet; PAP+YE, processed animal protein diet supplemented with 3% of yeast extract; DM, dry matter. Data are presented by the mean  $\pm$  standard deviation STD (n=3 per condition). Degrees of significance (p-value) were estimated with a one-way ANOVA followed by a Tukey's test with a significance level at 0.05. a, b, c Statistical differences are indicated by letters.



**Table 7.** Diets utilization.

	CTL		PAP		PAP+YE		<i>p-value</i>
	Mean	STD	Mean	STD	Mean	STD	
<b>Gain</b>							
Energy (KJ·g <sup>-1</sup> )	1.86	0.02	1.78	0.14	1.83	0.13	0.65
Protein (g·kg <sup>-1</sup> ·j <sup>-1</sup> )	2.73 <sup>a</sup>	0.01	2.28 <sup>c</sup>	0.14	2.51 <sup>b</sup>	0.04	0.002
Lipid (g·kg <sup>-1</sup> ·j <sup>-1</sup> )	3.18	0.02	3.39	0.70	3.38	0.36	0.67
<b>Retention</b>							
Energy (%)	51.6 <sup>ab</sup>	0.76	45.2 <sup>b</sup>	1.85	52.2 <sup>a</sup>	4.07	0.03
Protein (%)	40.4 <sup>a</sup>	0.48	31.3 <sup>b</sup>	2.26	38.7 <sup>a</sup>	0.93	0.03
Lipid (%)	99.8	2.12	99.7	16.2	115.9	12.8	0.24

CTL, commercial-like diet containing fishmeal and fish oil; PAP, processed animal protein diet; PAP+YE, processed animal protein diet supplemented with 3% of yeast extract. Data are presented by the mean ± standard deviation STD (n=3 per condition). Degrees of significance (p-value) were estimated with a one-way ANOVA followed by a Tukey's test, or a Kruskal-Wallis test with a significance level at 0.05. a, ab, b, c Statistical differences are indicated by letters.

**Table 8.** Plasma immune parameters.

	CTL		PAP		PAP+YE		p-value
	Mean	STD	Mean	STD	Mean	STD	
Lysozyme activity ( $\mu\text{g}/\text{mL}$ )	11.4	3.3	9.8	3.5	10.9	4.8	0.37
Peroxidase activity (U/mL)	19.7 <sup>a</sup>	17.0	9.7 <sup>b</sup>	8.1	12.4 <sup>ab</sup>	10.4	0.04
ACP (U/mL)	103.5	42.2	106.6	48.32	115.4	38.9	0.60
Total immunoglobulin ( $\text{OD}_{450\text{nm}}$ )	0.61 <sup>b</sup>	0.18	0.70 <sup>b</sup>	0.15	0.88 <sup>a</sup>	0.16	0.001

CTL, commercial-like diet containing fishmeal and fish oil; PAP, processed animal protein diet; PAP+YE, processed animal protein feed supplemented with 3% of yeast extract; ACP, alternative complement pathway. Data are presented by the mean  $\pm$  standard deviation STD (n=9 per condition). Degrees of significance (p-value) were estimated with a one-way ANOVA test or a Kruskal-Wallis test with a significance level at 0.05. <sup>a, b, ab</sup> Statistical differences are indicated by letters.



**Table 9.** Differentially expressed hepatic genes grouped by comparison and by putative functions.

Comparison	Gene name and putative function	Abbreviation	Ensembl ID	log2FoldChange	padj
PAP vs CTL	<i>Immunity and inflammation</i>				
	Hemopexin a	<i>hpx</i>	ENSOMYG00000000744	1,34	0.01
	Proteoglycan 4	<i>prg4</i>	ENSOMYG00000011441	0,64	0.01
	Chondroitin sulfate N-acetylgalactosaminyltransferase 2	<i>csgalnact2</i>	ENSOMYG00000043233	0,71	0.04
	Alpha-2-macroglobulin isoform X2	<i>α2m</i>	ENSOMYG00000036729	0,79	0.03
	Forkhead box protein A2-like	<i>foxa2</i>	ENSOMYG00000011219	1,04	0.04
	Complement component C3-3	<i>c3-3</i>	ENSOMYG00000018801	0,61	0.04
	<i>Cell protection</i>				
	NADPH--cytochrome P450 reductase	<i>por</i>	ENSOMYG00000032398	-0,64	0.04
	<i>Others</i>				
	Guanine deaminase	<i>gda</i>	ENSOMYG00000026930	1.95	<0.001
	Histone H1.0-B-like	<i>h10b</i>	ENSOMYG00000018545	0,98	0.01
	5.8S ribosomal RNA		ENSOMYG00000008170	2,22	0.04
Uncharacterized protein		ENSOMYG00000035109	1,47	0.04	
PAP+YE vs PAP	<i>Cell protection</i>				
	Myo-inositol oxygenase	<i>miox</i>	ENSOMYG00000029635	-1,0	<0.001
	<i>Coagulation</i>				
	Protein Z-dependent protease inhibitor-like	<i>serpina10</i>	ENSOMYG00000042079	-1,1	0.002
<i>Metabolism</i>					
Zinc transporter 1-like	<i>znt1</i> or <i>slc30a1</i>	ENSOMYG00000000887	0,6	0.003	

CTL, commercial-like diet containing fishmeal and fish oil; PAP, processed animal protein diet; PAP+YE, processed animal protein diet supplemented with 3% of yeast extract. N=6 per condition.

**Table 10.** Differentially expressed genes in distal intestine grouped by comparison and by putative functions.

Comparison	Gene name and putative function	Abbreviation	Ensembl ID	log2FoldChange	padj
PAP vs CTL	<i>Immunity and inflammation</i>				
	Serpin peptidase inhibitor, clade G (C1 inhibitor), member 1	<i>serping1</i>	ENSOMYG00000011625	-6.5	0.001
	Apolipoprotein A-II	<i>apoa2</i>	ENSOMYG00000002485	-4.2	0.03
	<i>Metabolism</i>				
	Aldehyde dehydrogenase family 3 member A2 isoform X3	<i>aldh3a2</i>	ENSOMYG00000044867	3.5	0.001
	<i>Coagulation and wound healing</i>				
	Fibrinogen beta chain	<i>fbg</i>	ENSOMYG00000017143	-5.3	0.04
	CD9 protein	<i>cd9</i>	ENSOMYG00000045180	-1.2	0.04
	<i>Endoplasmic reticulum stress</i>				
	Selenoprotein S-like	<i>selenos</i>	ENSOMYG00000033848	8.7	<0.001
Protein LEG1 homolog	<i>leg1</i>	ENSOMYG00000016452	-5.4	0.04	
<i>Others</i>					
RIMS-binding protein 2	<i>rimbp2</i>	ENSOMYG00000031007	-2,9	<0.001	
PAP+YE vs CTL	<i>Immunity and inflammation</i>				
	T-cell surface glycoprotein CD3 delta chain	<i>cd3d</i>	ENSOMYG00000029525	0.88	0.007
	Mitogen-activated protein kinase-binding protein 1 isoform X	<i>mapkbp1</i>	ENSOMYG00000017876	-4.23	0.02
	Normal mucosa of esophagus-specific gene 1 protein	<i>nmes1 or c15orf48 or mocci</i>	ENSOMYG00000016819	1.68	0.04
	Alpha-(1,6)-fucosyltransferase	<i>fut8</i>	ENSOMYG00000032051	-0.44	0.02
	<i>Antipathogen</i>				
	Cholesterol 25-hydroxylase	<i>ch25h</i>	ENSOMYG00000013956	1.89	0.03
	<i>Endoplasmic reticulum stress</i>				
	Selenoprotein S-like	<i>selenos</i>	ENSOMYG00000033848	22.57	<0.001
	<i>Metabolism</i>				
Zinc transporter ZIP4-like	<i>slc39a4</i>	ENSOMYG00000012539	-1.92	<0.001	
SEC16 homolog B, endoplasmic reticulum export factor	<i>sec16b</i>	ENSOMYG00000015924	-0.55	0.02	
Kelch repeat and BTB domain-containing protein 2-like	<i>kbtbd2</i>	ENSOMYG00000030759	-1.20	0.03	

	<i>Aldehyde dehydrogenase family 3 member A2 isoform X3</i>	<i>aldh3a2</i>	ENSOMYG00000044867	3.14	0.03
	<i>Others</i>				
	BICD family-like cargo adapter 1	<i>bicdl1</i>	ENSOMYG00000031226	1,78	0.01
	Actin, alpha skeletal muscle 2	<i>acta1b</i>	ENSOMYG00000041113	-2.25	0.02
	Unnamed protein product		ENSOMYG00000034384	0.94	0.04
	<i>Immunity and inflammation</i>				
	Complement C3-like	<i>c3</i>	ENSOMYG00000038040	2.02	0.02
	<i>Antipathogen</i>				
	Histamine receptor H1	<i>hrh1</i>	ENSOMYG00000001293	-1.00	<0.001
	Microfibril associated protein 4	<i>mfap4</i>	ENSOMYG00000027695	1.72	0.02
	<i>Metabolism</i>				
	Zinc transporter ZIP4-like	<i>slc39a4 or zip4</i>	ENSOMYG00000012539	-2.40	<0.001
	<i>Coagulation and wound healing</i>				
	Fibrinogen beta chain	<i>fbg</i>	ENSOMYG00000017143	3.84	0.02
	<i>Others</i>				
	GATA binding protein 4	<i>gata4</i>	ENSOMYG00000018611	-23.61	<0.001
	zgc:171566		ENSOMYG00000031594	-3.01	0.02
PAP+YE VS PAP					

CTL, commercial-like diet containing fishmeal and fish oil; PAP, processed animal protein diet; PAP+YE, processed animal protein diet supplemented with 3% of yeast extract. N=6 per condition.

1 **Table 11.** Differentially expressed hepatic miRNAs in PAP+YE vs PAP diets.

miRNA	log2FoldChange	padj
miR-222b-3p	1,08	0,01
miR-18a-5p	-1,17	0,01
miR-92a-3p	0,62	0,04
miR-217a-5p	-2,73	0,04

2 CTL, commercial-like diet containing fishmeal and fish oil; PAP, processed animal protein diet; PAP+YE,  
3 processed animal protein diet supplemented with 3% of yeast extract. N=6 per condition. N=6 per  
4 condition.

5

6

7

8

9

10

- 11 Supplementary Table 1. Analytical composition (% dry matter (DM)) of the yeast extract (Prosaf<sup>®</sup>,  
12 Phileo by Lesaffre).

Component	Analyzed values
Dry matter (%)	95.7
Crude protein (% DM)	71.6
Crude lipid (% DM)	< 0.5
Ash (% DM)	8.9
Energy (kJ/g DM)	20.1
Total nucleotides (% DM)	8.7
Phosphorus (g/kg DM)	13.8
Arginine (% DM)	3.1
Histidine (% DM)	1.3
Isoleucine (% DM)	2.8
Leucine (% DM)	4.0
Lysine (% DM)	4.6
Threonine (% DM)	2.7
Valine (% DM)	3.6
Methionine (% DM)	0.9
Cysteine (% DM)	0.8
Phenylalanine (% DM)	2.3
Tyrosine (% DM)	2.0
Tryptophan (% DM)	0.8
Alanine (% DM)	4.5
Aspartic acid (% DM)	6.4

Glutamic acid (% DM)	12.0
Glycine (% DM)	2.8
Proline (% DM)	2.9
Serine (% DM)	2.7

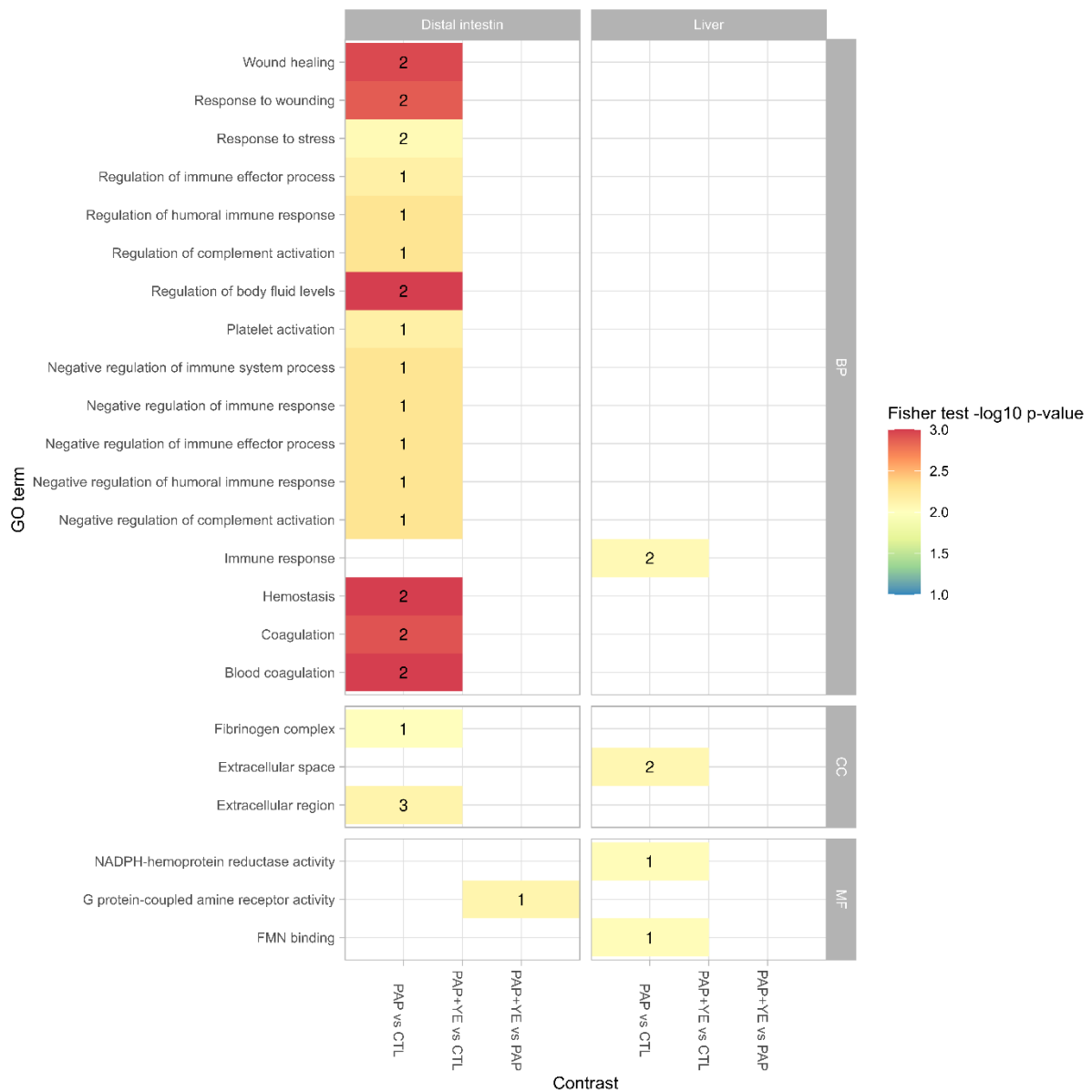
13

14

15 Supplementary Table 2. Distribution of proteins from experimental diets by molecular weight ranges  
16 (%).  
17

(%)	CTL	PAP	PAP+YE
20000-15000 Da	3	2.8	2
15000-10000 Da	9.4	10.2	9.5
10000-8000 Da	4.1	4.6	5
8000-6000 Da	5.6	6.4	6.4
6000-4000 Da	6.7	7.6	7.7
4000-2000 Da	7.7	8.6	8.5
2000-1000 Da	8	8.5	8.5
1000-500 Da	9.6	8.8	8.9
500-200 Da	14.9	12.7	13.1
< 200 Da	30.9	29.7	30.4

18 CTL, commercial-like diet containing fishmeal and fish oil; PAP, processed animal protein diet; PAP+YE,  
19 processed animal protein diet supplemented with 3% of yeast extract.  
20  
21



22

23 Supplementary Figure 1. Gene ontology enrichment of terms with significant differences (Fisher's  
 24 exact test, p-value < 0.1) in the liver and distal intestine. Labels indicate the number of differentially  
 25 expressed genes associated to a particular term (BP, biological process; CC, cellular component; MF,  
 26 molecular function). CTL, commercial-like diet containing fishmeal and fish oil; PAP, processed animal  
 27 protein diet; PAP+YE, processed animal protein feed supplemented with 3% yeast extract.

28