



**HAL**  
open science

## Monitor chicken PGC integrity during in vitro amplification of cells and post-cryopreservation

M.S. Govoroun

► **To cite this version:**

M.S. Govoroun. Monitor chicken PGC integrity during in vitro amplification of cells and post-cryopreservation. IMAGE Final Annual Meeting, Feb 2020, Madrid, Spain. hal-04277029

**HAL Id: hal-04277029**

**<https://hal.inrae.fr/hal-04277029>**

Submitted on 9 Nov 2023

**HAL** is a multi-disciplinary open access archive for the deposit and dissemination of scientific research documents, whether they are published or not. The documents may come from teaching and research institutions in France or abroad, or from public or private research centers.

L'archive ouverte pluridisciplinaire **HAL**, est destinée au dépôt et à la diffusion de documents scientifiques de niveau recherche, publiés ou non, émanant des établissements d'enseignement et de recherche français ou étrangers, des laboratoires publics ou privés.

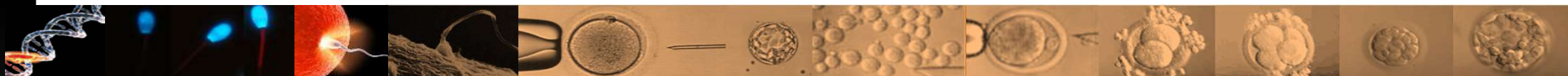
# Monitor chicken PGC integrity during in vitro amplification of cells and post-cryopreservation



- Transcriptome : RNAseq
- Epigenome : RRBS
- Germ line transmission

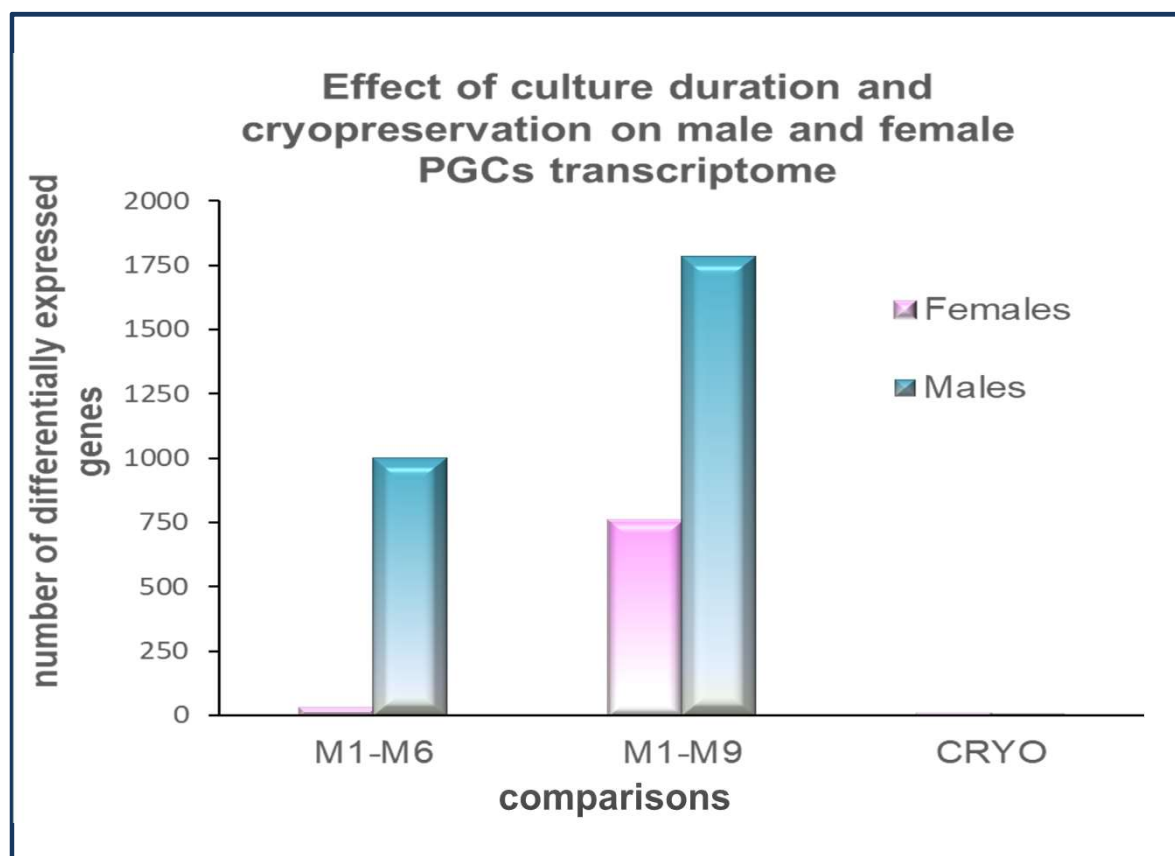
Madrid

February 4-6, 2020



# RESULTS

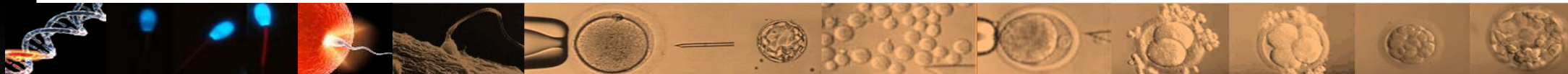
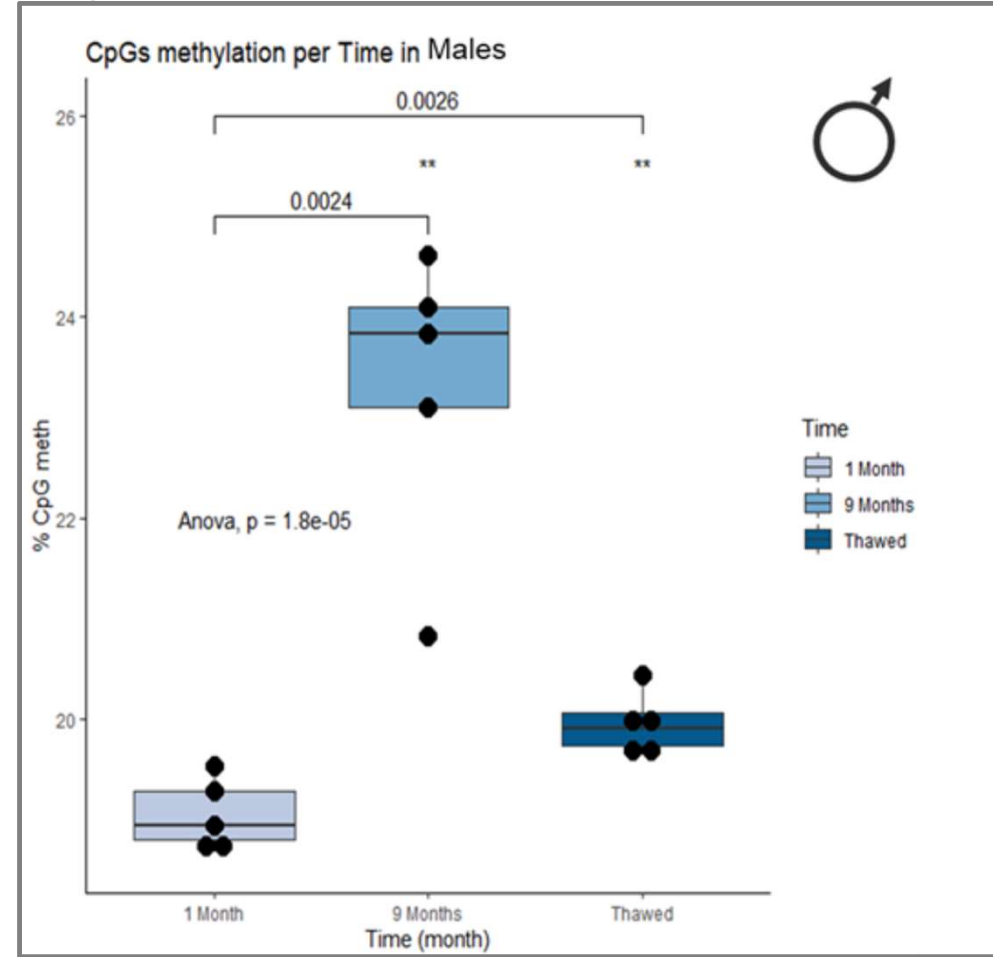
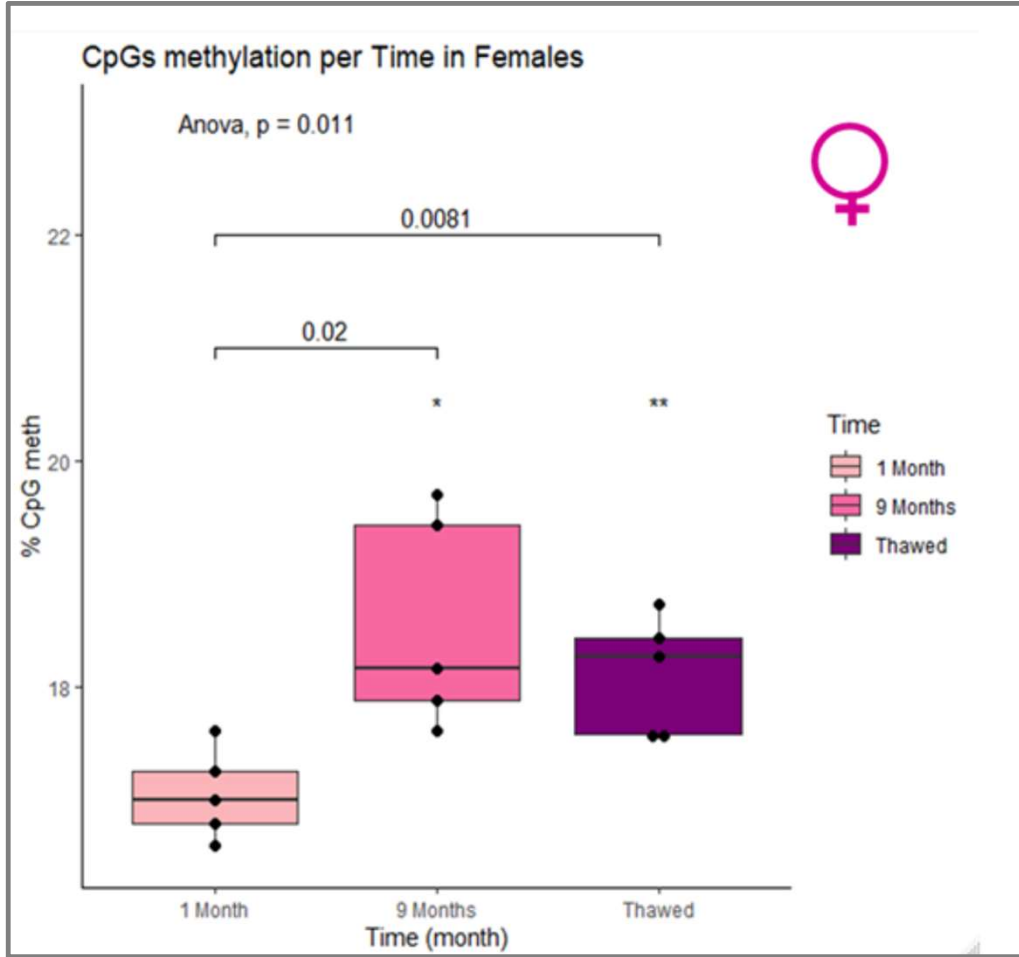
Effect of culture duration and cryopreservation on gene expression:  
RNAseq study



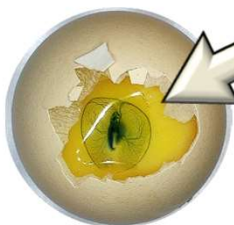
M1: 1 month in culture  
M6: 6 months in culture  
M9: 9 months in culture



# Effect of culture duration and cryopreservation on DNA methylation: RRBS study



# Germ line transmission



chimera cock number	culture name	monthhs in culture	number of black chicks	%black chicks/hatched	germline transmission rate
2587	K	1	6	21.4	42.8
2592	K	1	2	2.4	4.8
2589	K	1	2	1.9	3.8
2584	K	1	1	1.9	3
2626	K	9	0	0	0
2623	K	9	0	0	0
chimera hen number	culture name	monthhs in culture	number of black chicks	%black chicks/hatched	germline transmission rate
2599	R	9	1	1.9	3.8
2601	R	9	2	3.4	6.8
2612	R	9	10	30.3	60.6

First French progeny from *in vitro* derived PGCs

