



HAL
open science

In vitro digestion of protein-rich dairy products in the ageing gastrointestinal tract

Anaïs Lavoisier, Martine Morzel, Séverine Chevalier, Gwénaële Henry, Julien Jardin, Marielle Harel-Oger, Gilles Garric, Didier Dupont

► To cite this version:

Anaïs Lavoisier, Martine Morzel, Séverine Chevalier, Gwénaële Henry, Julien Jardin, et al.. In vitro digestion of protein-rich dairy products in the ageing gastrointestinal tract. 37th EFFoST International Conference 2023 Sustainable Food and Industry, The European Federation of Food Science and Technology (EFFoST), Nov 2023, Valence (Espagne), Spain. hal-04281660

HAL Id: hal-04281660

<https://hal.inrae.fr/hal-04281660>

Submitted on 13 Nov 2023

HAL is a multi-disciplinary open access archive for the deposit and dissemination of scientific research documents, whether they are published or not. The documents may come from teaching and research institutions in France or abroad, or from public or private research centers.

L'archive ouverte pluridisciplinaire **HAL**, est destinée au dépôt et à la diffusion de documents scientifiques de niveau recherche, publiés ou non, émanant des établissements d'enseignement et de recherche français ou étrangers, des laboratoires publics ou privés.



Distributed under a Creative Commons Attribution - NonCommercial - NoDerivatives 4.0 International License



➤ *In vitro* digestion of protein-rich dairy products in the ageing gastrointestinal tract

Anaïs Lavoisier, Martine Morzel, Séverine Chevalier, Gwénaële Henry, Julien Jardin, Marielle Harel-Oger, Gilles Garric, Didier Dupont

November 7, 2023



OK TO SHARE
ON SOCIAL MEDIA





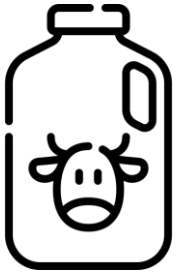
Insufficient protein intake may lead to sarcopenia, characterized by the loss of muscle mass, strength, and function.



Older adults > 65 years old need to increase the amount of high-quality proteins in their diet: at least 1 g protein /kg body weight /day.



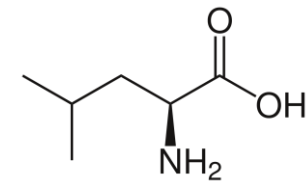
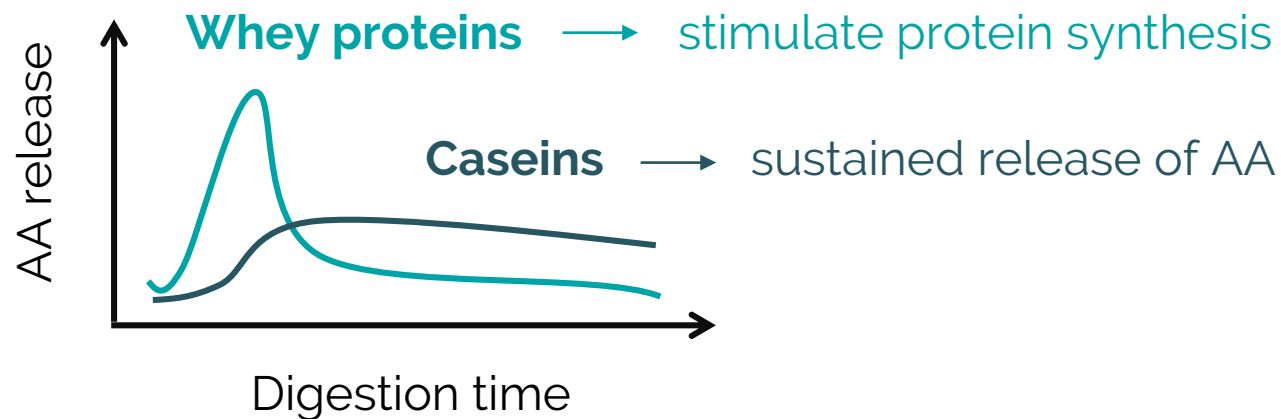
Ageing leads to changes in the functionality of the digestive tract but the impact of ageing on digestion, and absorption of nutrients is still unclear.



Milk proteins are interesting to promote muscle health: contain all the essential amino acids and have very high digestibility ratings.



Synergistic effect between caseins and whey proteins in milk to sustain the anabolic requirements during the whole postprandial period.



Leucine



Investigate *in vitro* the influence of age on the rate and extent of proteolysis of high-protein dairy products.



High-protein (10% w/w) dairy products considered suitable for older adults in terms of texture and oral comfort.

Skyr

Commercial fermented dairy product containing mainly caseins

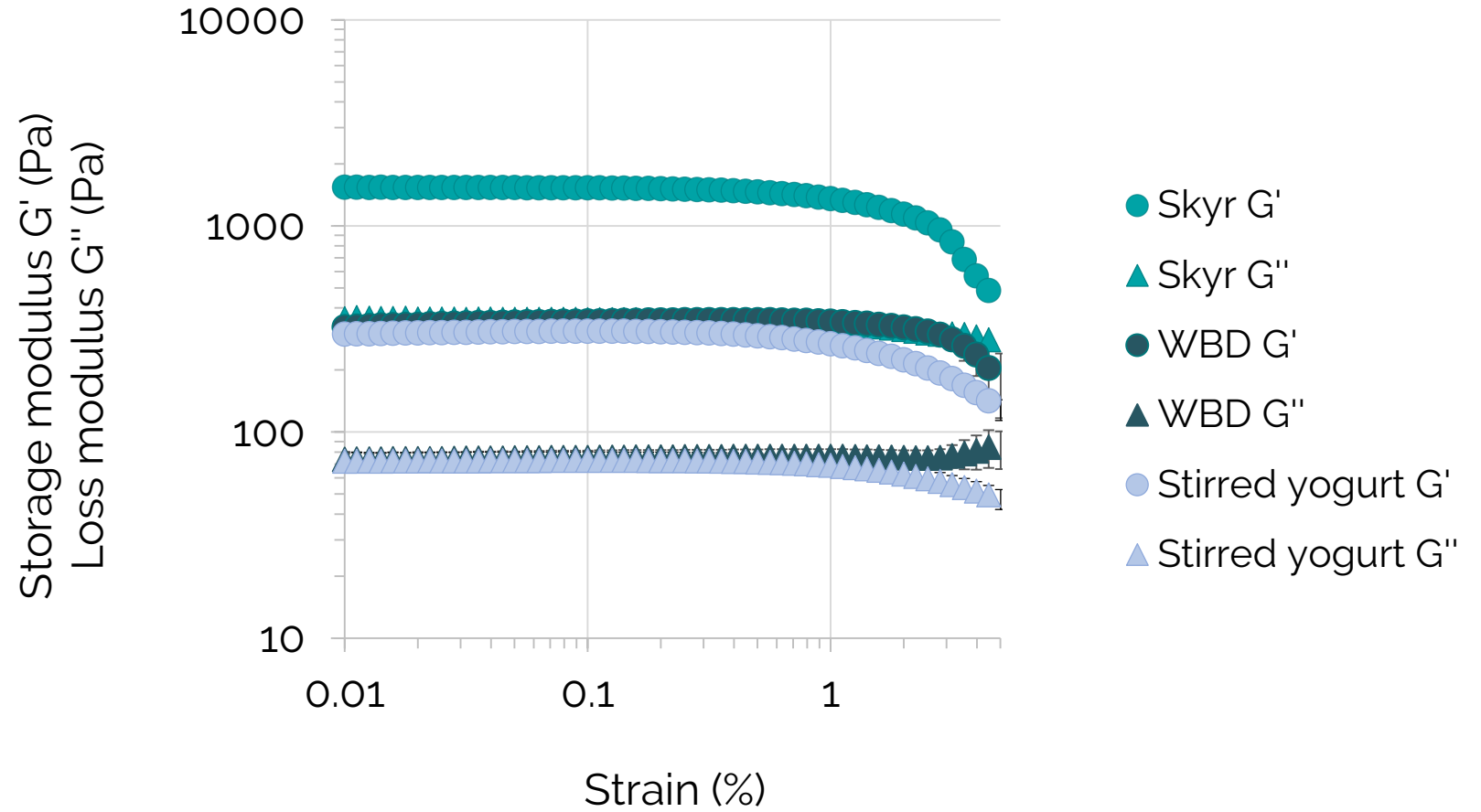
Whey-based dairy (WBD)

Lab scale fermented dairy product, formulated with a ratio of whey proteins to caseins of 80 to 20 %, as opposed to milk

WBD had rheological properties comparable to a stirred yogurt.



Amplitude sweeps,
1 Hz, 10°C.



WBD was acceptable to older adults, even with poor oral physiology (low number of posterior functional units, low salivary flow, and high saliva viscosity).



Panel of 80 subjects (49 women, 31 men), aged 76 ± 6 y.



Ratings of food comfortability attributes for WBD:

Oral comfort = 83 ± 20 /100

Easy to eat = 94 ± 12 /100

Static *in vitro* digestion

Oral phase

1: 1 food: SSF dilution according to dry matter
pH = 7.0, no chewing, no amylase

	Young adults	Older adults
Gastric phase		
pH:	3.0	↗ 3.7
Duration:	2 h	↗ 3 h
Pepsin:	2000 U ml ⁻¹	↘ 1200 U ml ⁻¹
Gastric lipase:	60 U ml ⁻¹	↘ 36 U ml ⁻¹
Intestinal phase		
[Ca ²⁺]:	0.6 mM	↗ 1 mM
pH:	7.0	7.0
Duration:	2 h	2 h
Pancreatin:	100 U ml ⁻¹	↘ 80 U ml ⁻¹
Bile salts:	10 mM	↘ 6.7 mM



Food &
Function

ROYAL SOCIETY
OF CHEMISTRY

PAPER

[View Article Online](#)
[View Journal](#) | [View Issue](#)

 Check for updates

Cite this: *Food Funct.*, 2023, **14**, 4569

Static *in vitro* digestion model adapted to the general older adult population: an INFOGEST international consensus

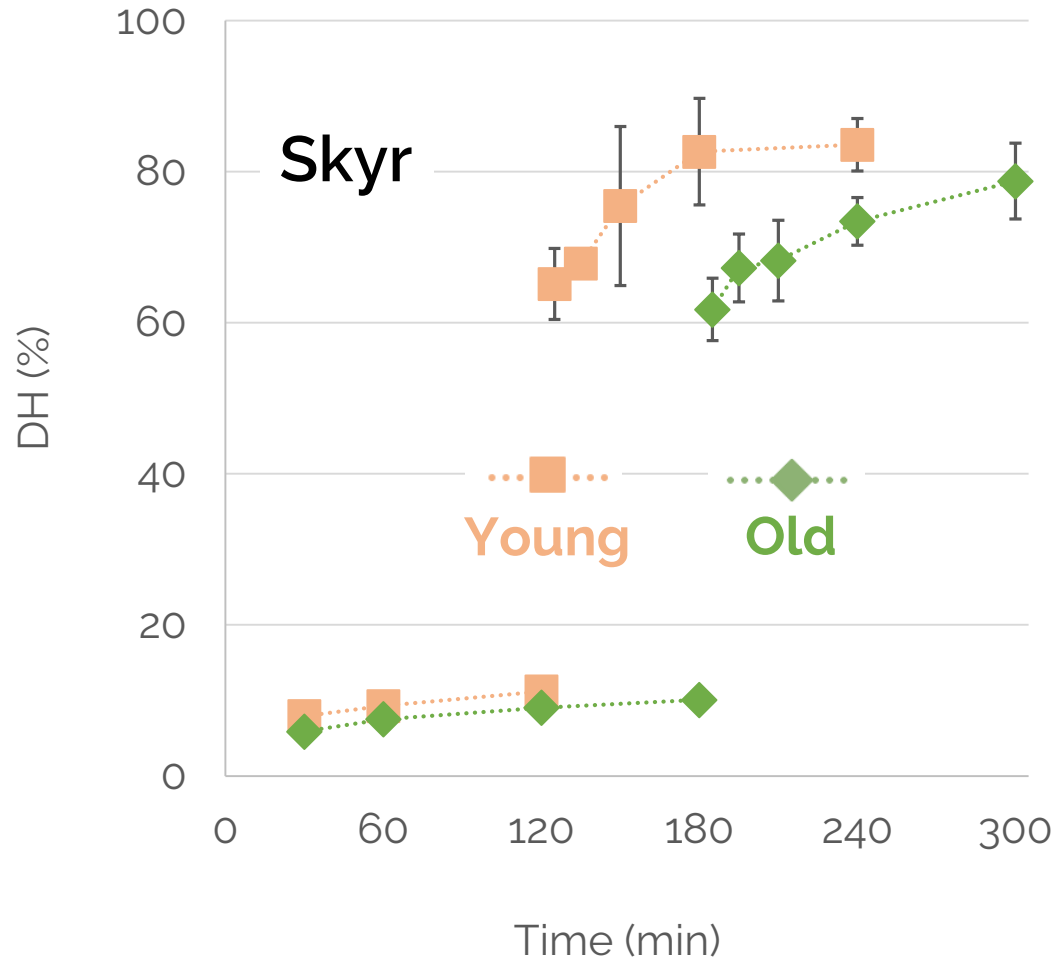
O. Menard,^{†a} U. Lesmes,^{†b} C. S. Shani-Levi,^b A. Araiza Calahorra,^c A. Lavoisier,^a M. Morzel,^a A. Rieder,^{†d} G. Feron,^{e,f} S. Nebbia,^a L. Mashiah,^b A. Andres,^g G. Bornhorst,^{†h} F. Carrière,^{†i} L. Egger,^{†j} S. Gwala,^k A. Heredia,^g B. Kirkhus,^d A. Macierzanka,^{†l} R. Portman,^{†l} I. Recio,^{†m} V. Santé-Lhoutellier,^{†n} C. Tournier,^{e,f} A. Sarkar,^{†c} A. Brodkorb,^k A. Mackie,^{†o} and D. Dupont^{†*a}

INRAE

In vitro digestion of protein-rich dairy products in the ageing gastrointestinal tract

Anais Lavoisier

Degree of hydrolysis (DH), OPA method



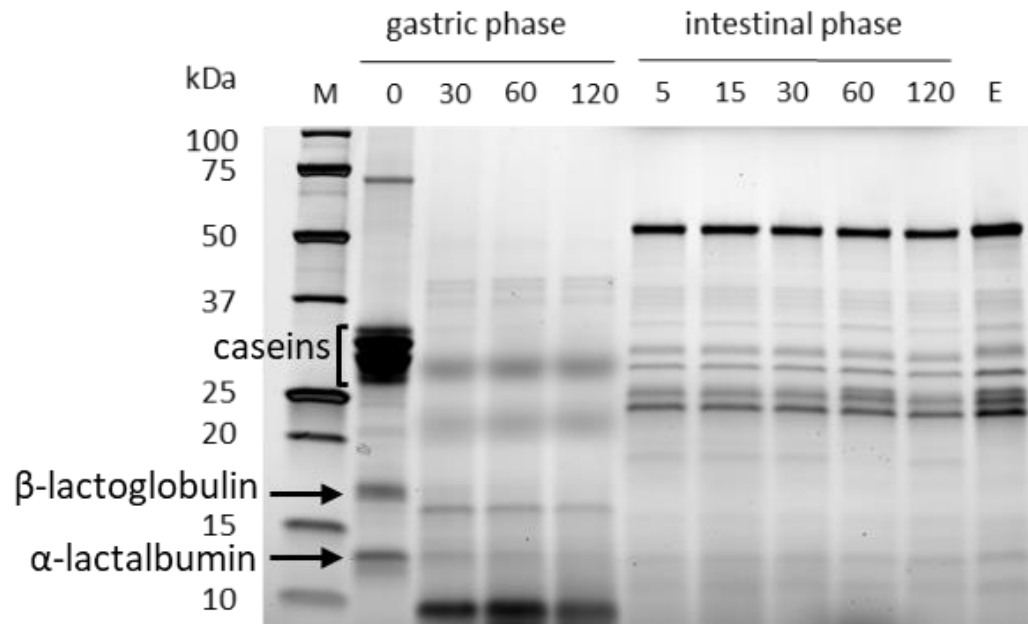
Gastric phase

DH **old** < DH **young** during the whole gastric phase (**-20%**) due to the reduction in pepsin activity.

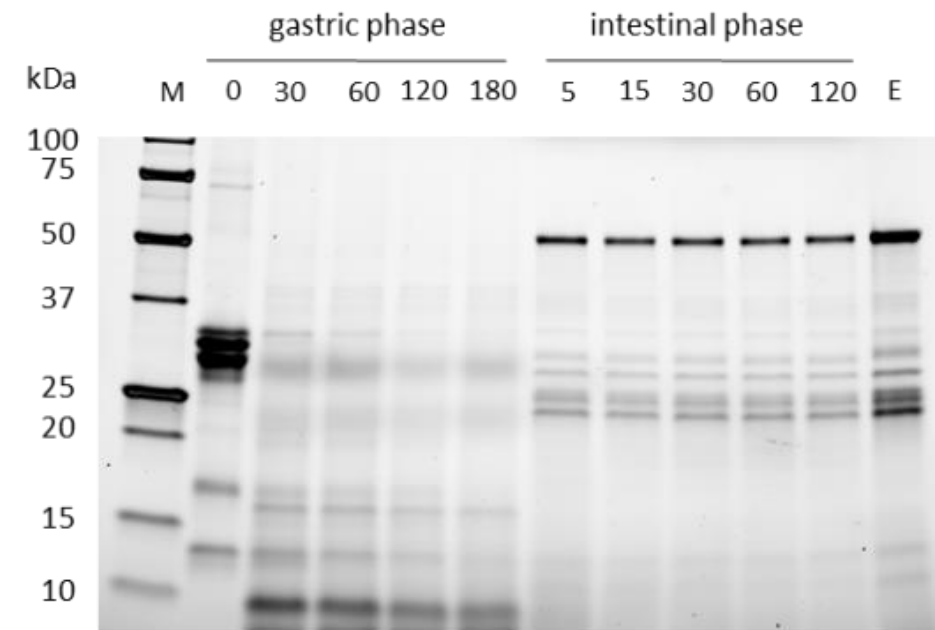
Intestinal phase

High DH values reached at the end of the digestion: **75-85%** in both conditions.

Protein hydrolysis, SDS-PAGE



Skyr - Young

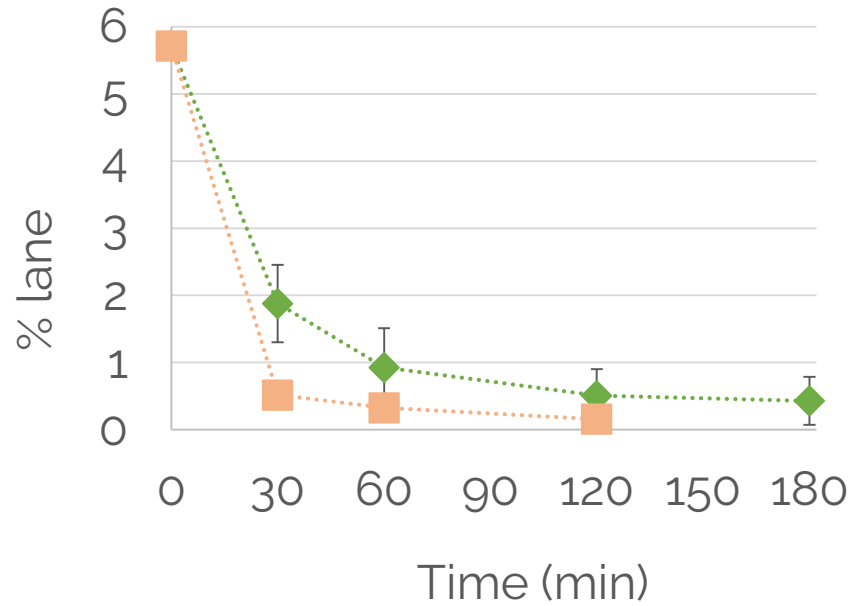


Skyr - Old

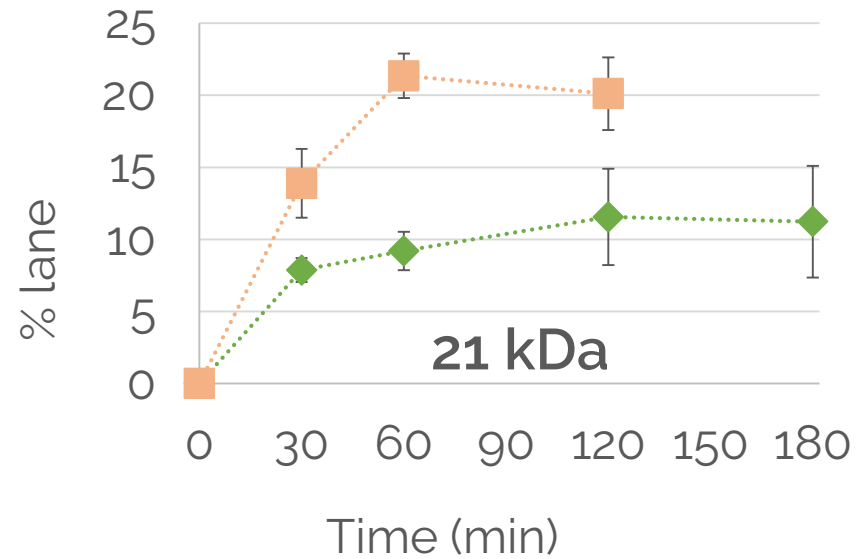
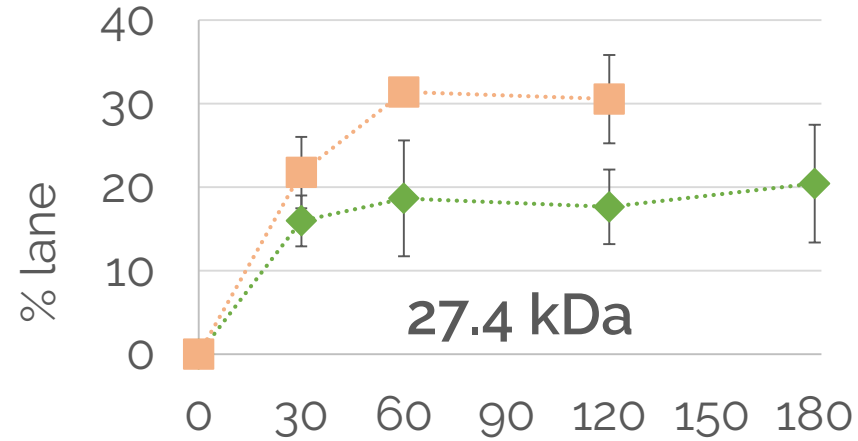
Caseins were rapidly digested by pepsin even at pH 3.7

Protein hydrolysis, SDS-PAGE

Decrease in α -s2-casein (32.6 kDa)



Appearing protein fragments

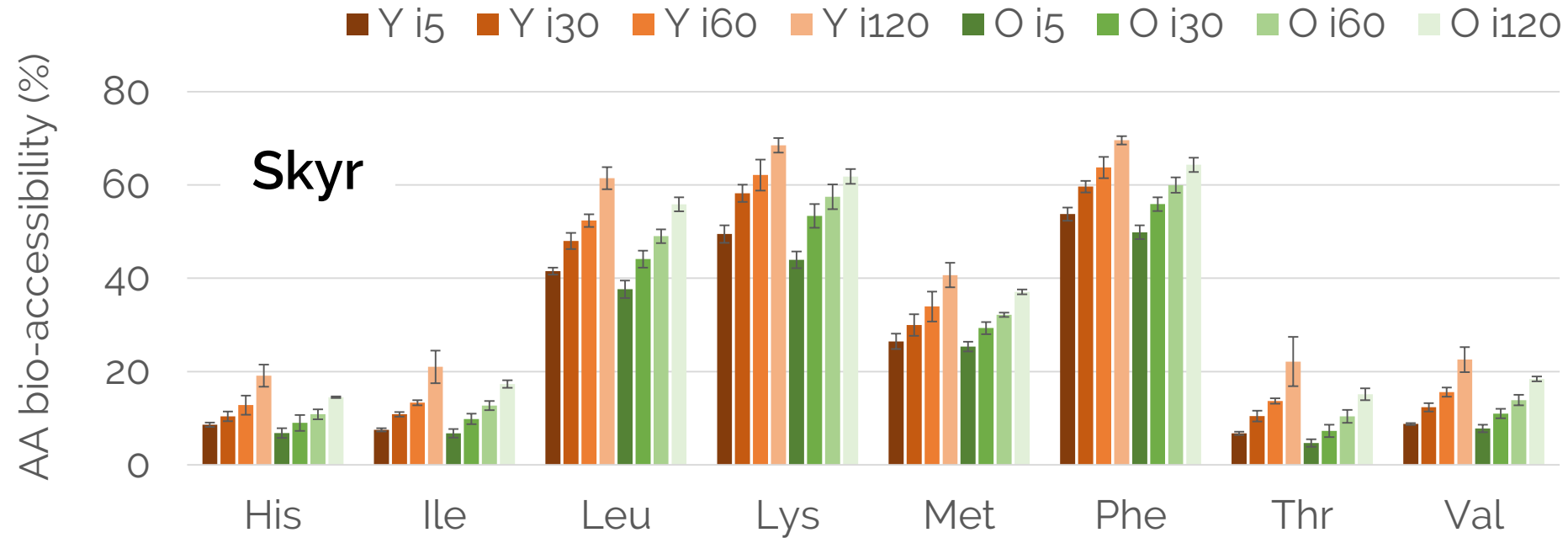


...■...
Young

...◆...
Old

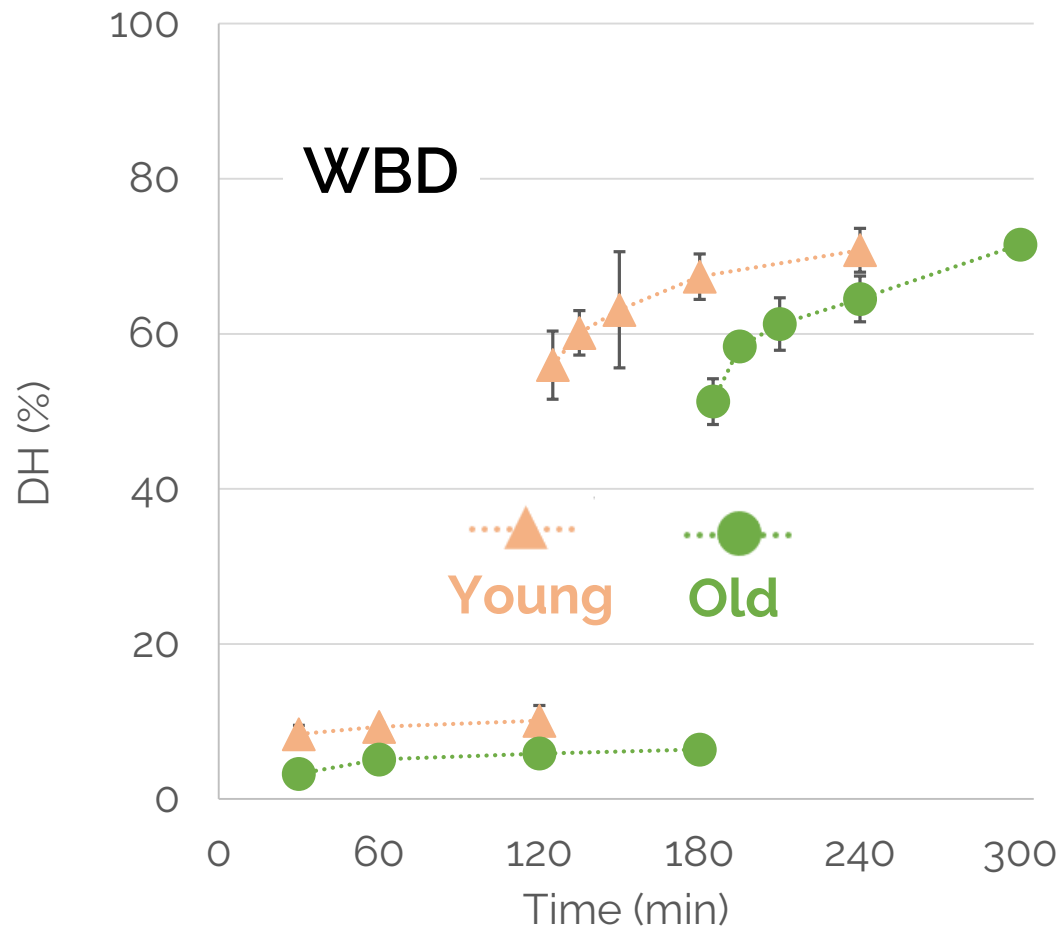


Essential amino acids bio-accessibility, HPLC



Slightly less essential free AA with the older adult model: **-14%** overall, and **-10%** Leu at the end of the digestion (i120)

Degree of hydrolysis (DH), OPA method



Gastric phase

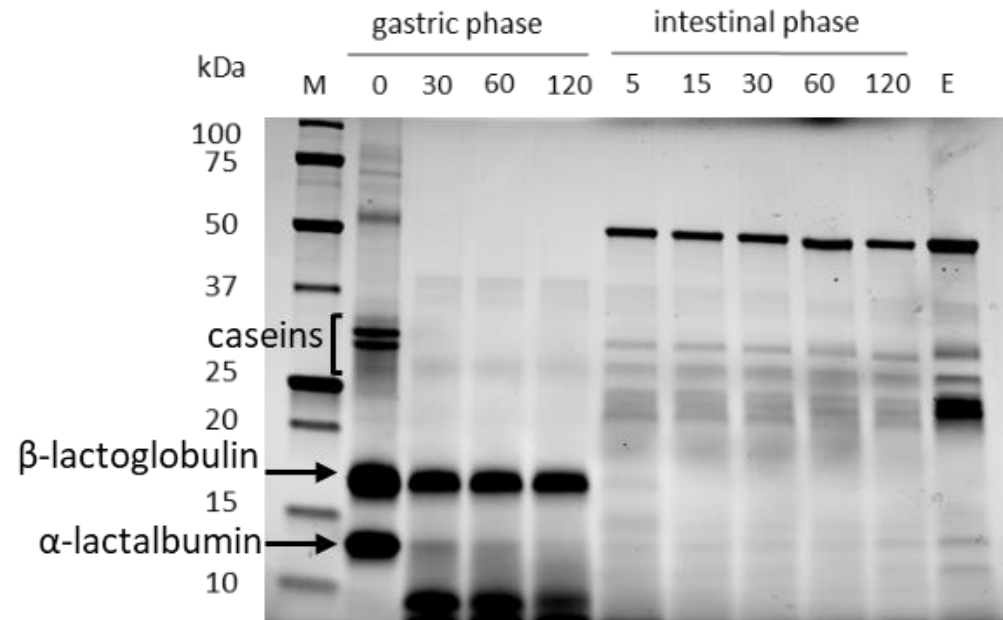
No changes in DH **after 30 min (young)** or **60 min (old)** in the gastric phase.

DH **old** < DH **young** at the end of the gastric phase (**-37%**) due to the reduction in pepsin activity.

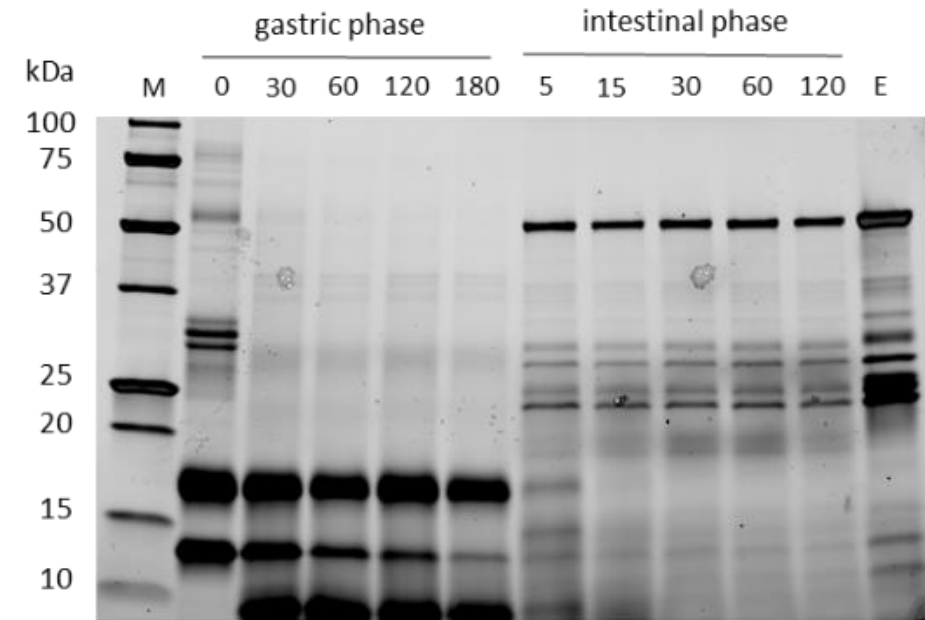
Intestinal phase

High DH values reached at the end of the digestion: approx. 70% in both conditions.

Protein hydrolysis, SDS-PAGE



WBD - Young

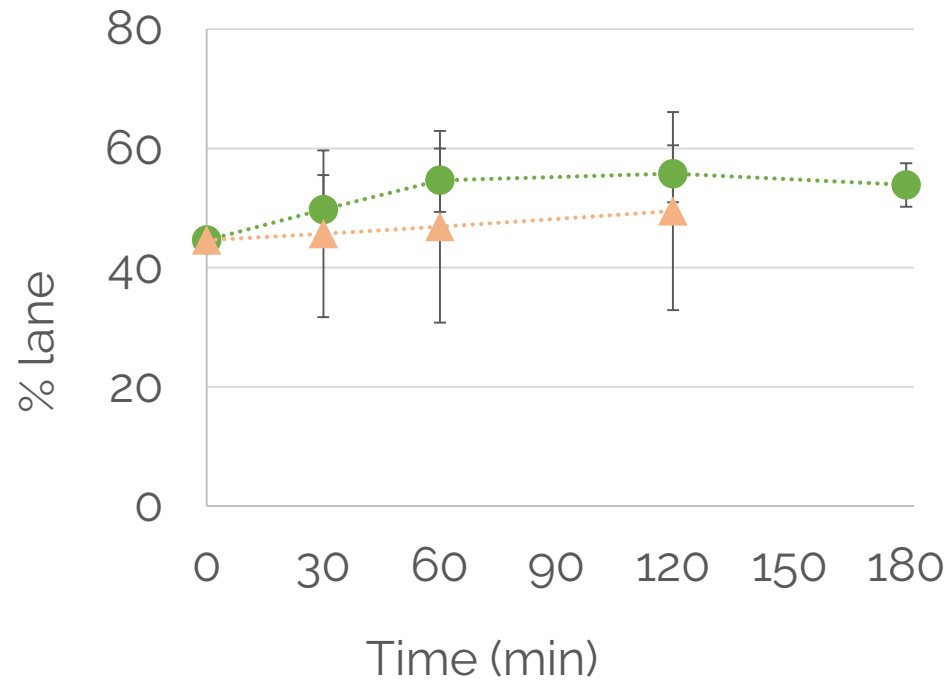


WBD - Old

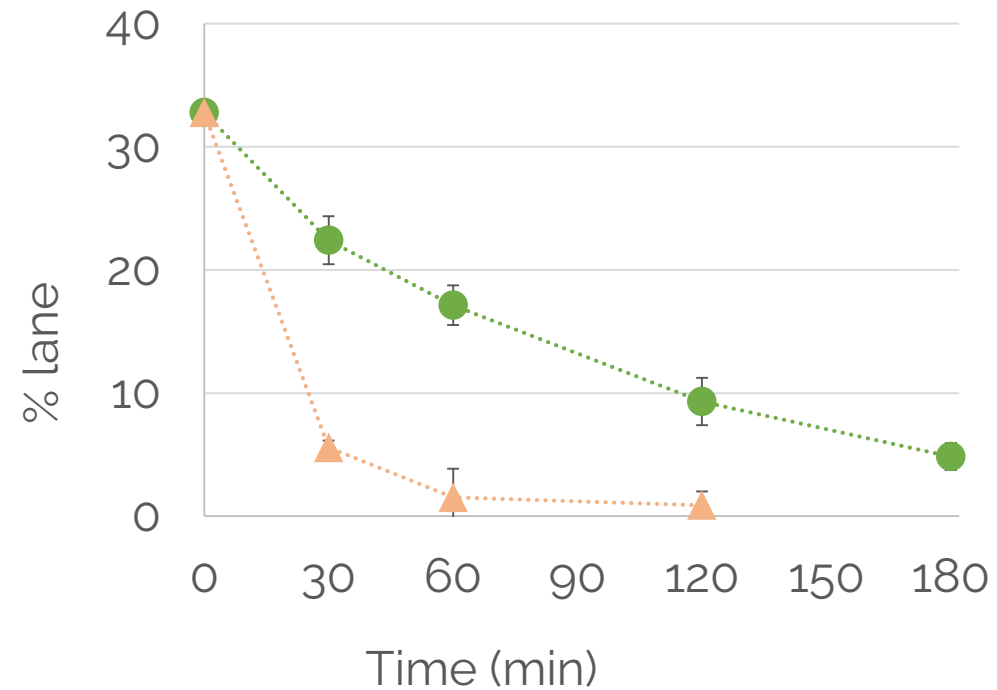
β -lactoglobulin was resistant to pepsin

Protein hydrolysis, SDS-PAGE

Resistant β -lactoglobulin (16.6 kDa)

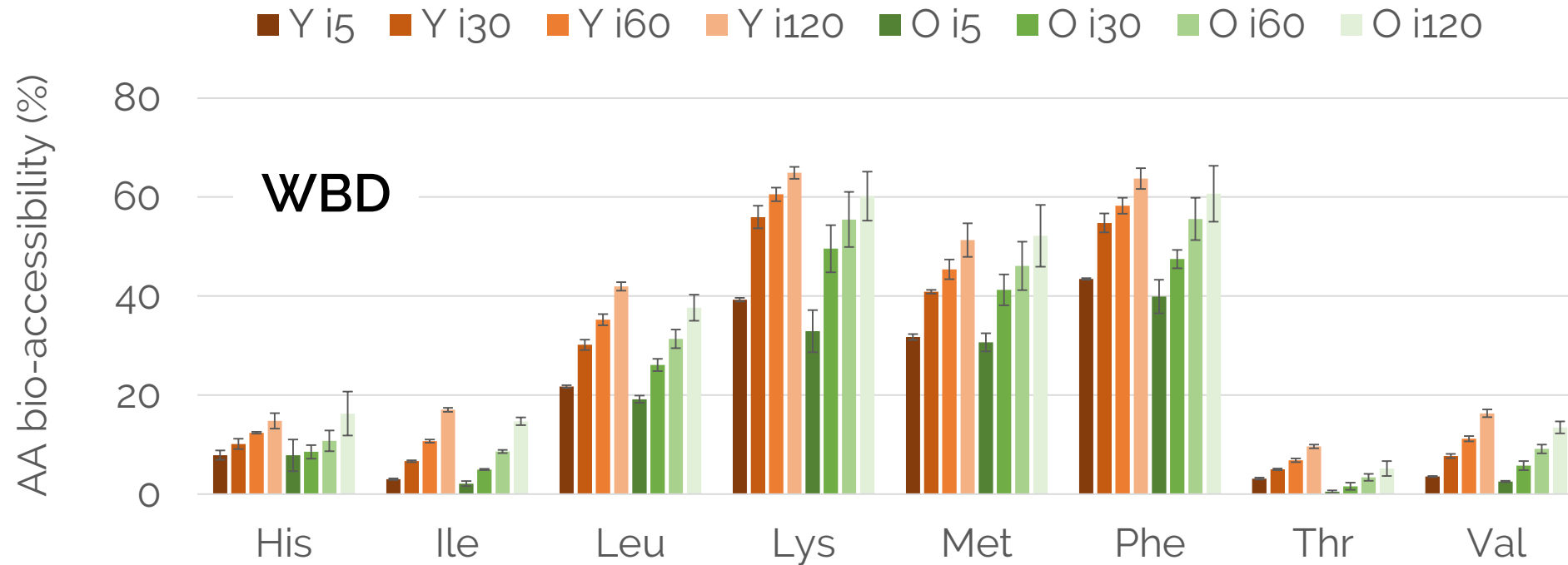


Decrease in α -lactalbumin (12.6 kDa)



Young
Old

Essential amino acids bio-accessibility, HPLC



No significant differences between young and older adults during the whole intestinal phase.



In vitro digestion conditions influenced the kinetics and extent of proteolysis, but differences were mainly observed in the gastric phase.



Different scenarios were observed depending on the composition of the dairy product studied.

Food &
Function



PAPER



Cite this: *Food Funct.*, 2023, 14, 9377

***In vitro* digestion of two protein-rich dairy products in the ageing gastrointestinal tract†**

Anaïs Lavoisier, * Martine Morzel, Séverine Chevalier, Gwénaële Henry, Julien Jardin, Marielle Harel-Oger, Gilles Garric and Didier Dupont



INRAE

In vitro digestion of protein-rich dairy products in the ageing gastrointestinal tract

Anaïs Lavoisier



Cream cheeses with 24% lipids and different WP:CAS ratios have been formulated and digested *in vitro*.



A clinical study comparing the effect of WBD, Skyr, and cream cheese on young and older adults' postprandial muscle synthesis is underway.

NIH NORWEGIAN SCHOOL
OF SPORT SCIENCES

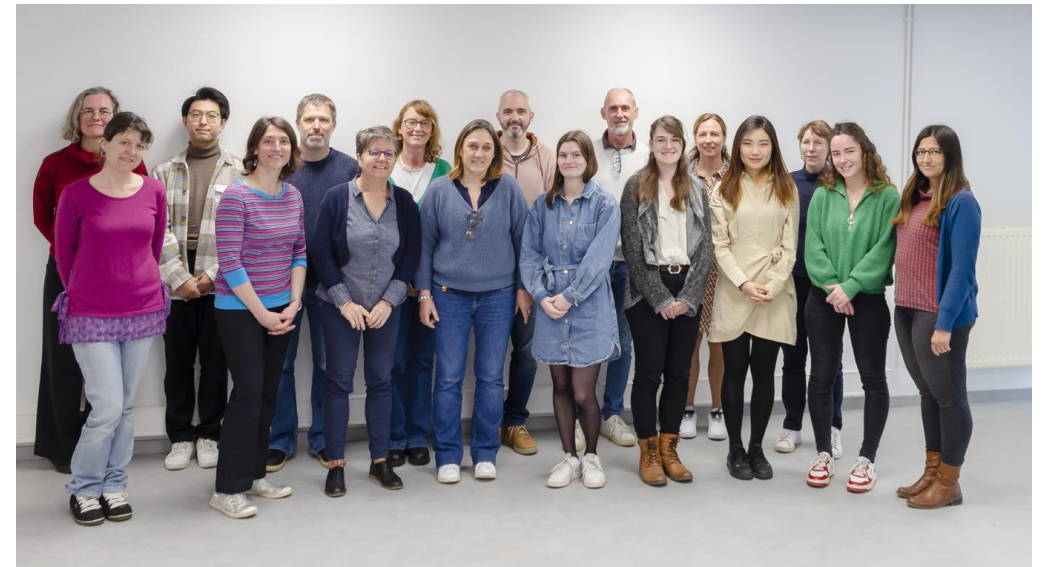
Thank you



EAT4age
Palatable, nutritious and digestible foods for prevention
of undernutrition in active aging



This project has received funding from the European Union's
H2020 Research and Innovation Programme under grant agreement n.696300



Bioactivity and Nutrition (BN) team



INRAE

In vitro digestion of protein-rich dairy products in the ageing gastrointestinal tract
Anaïs Lavoisier