



HAL
open science

Branches and ecological states of the gut microbiome: Mapping for future personalized nutritional and therapeutic interventions

Julien Tap

► **To cite this version:**

Julien Tap. Branches and ecological states of the gut microbiome: Mapping for future personalized nutritional and therapeutic interventions. Journées Polepharma de Microbiomique, Polepharma, Nov 2023, Rouen, France. hal-04316201

HAL Id: hal-04316201

<https://hal.inrae.fr/hal-04316201>

Submitted on 30 Nov 2023

HAL is a multi-disciplinary open access archive for the deposit and dissemination of scientific research documents, whether they are published or not. The documents may come from teaching and research institutions in France or abroad, or from public or private research centers.

L'archive ouverte pluridisciplinaire **HAL**, est destinée au dépôt et à la diffusion de documents scientifiques de niveau recherche, publiés ou non, émanant des établissements d'enseignement et de recherche français ou étrangers, des laboratoires publics ou privés.



Distributed under a Creative Commons Attribution 4.0 International License

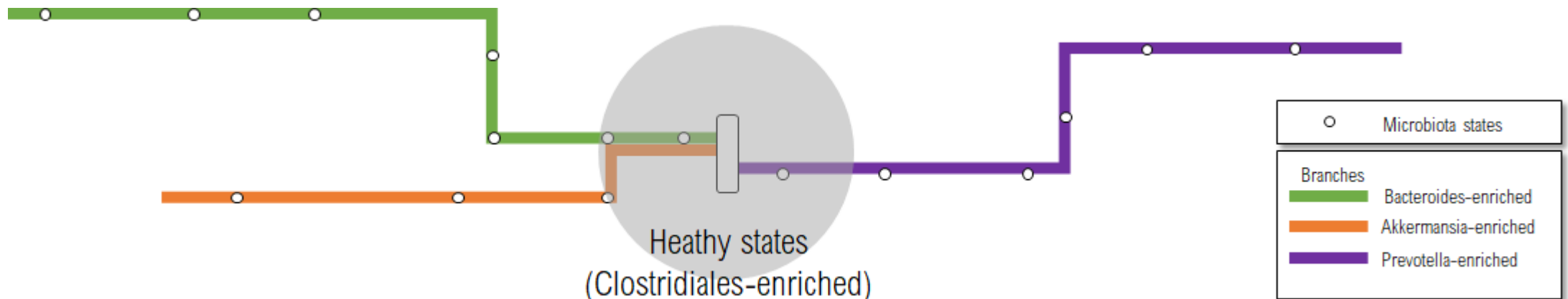
> Branches and ecological states of the gut microbiome:

Mapping for future personalized nutritional and therapeutic interventions

Julien Tap

INRAE MICALIS

Journées Polepharma de Microbiomique- Rouen 2023

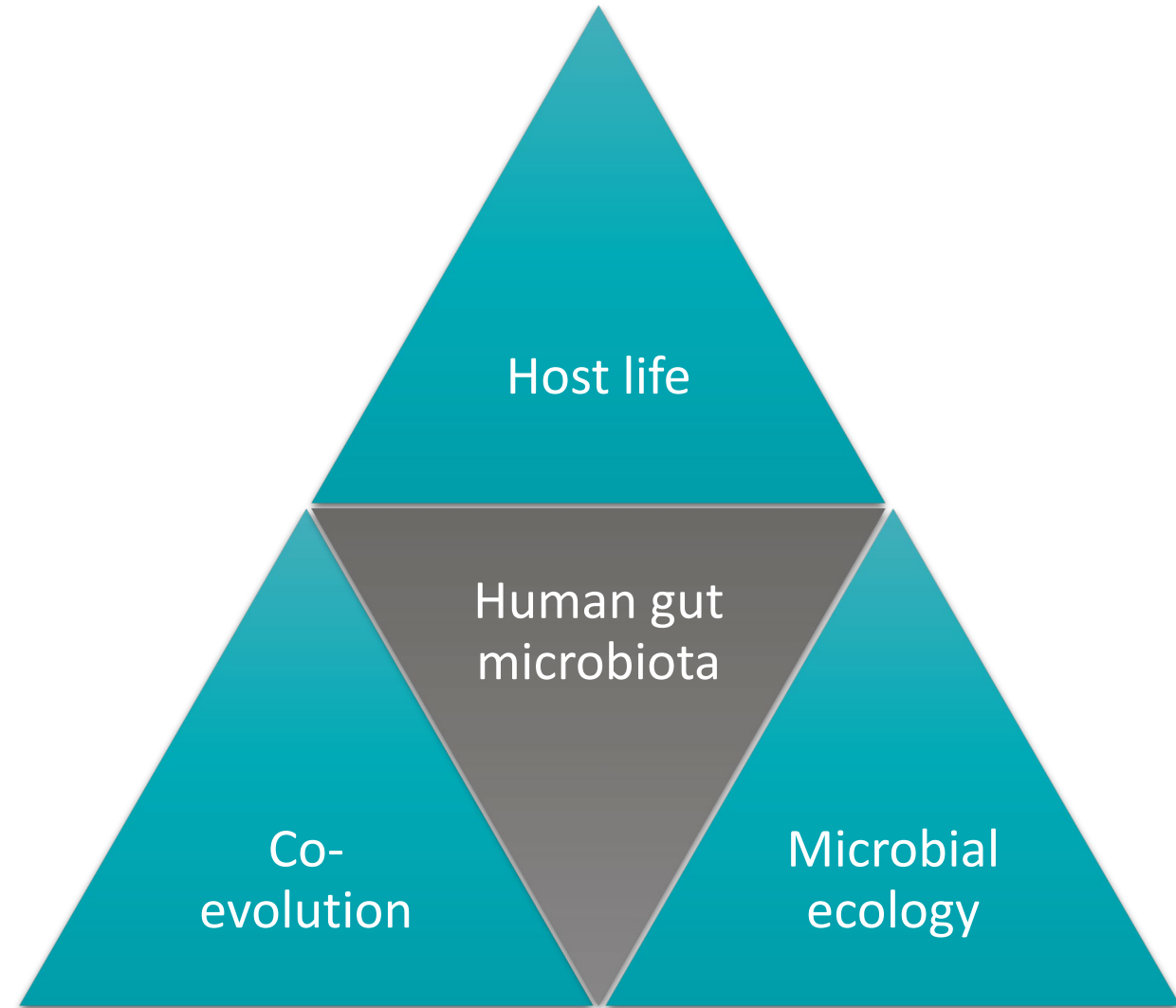
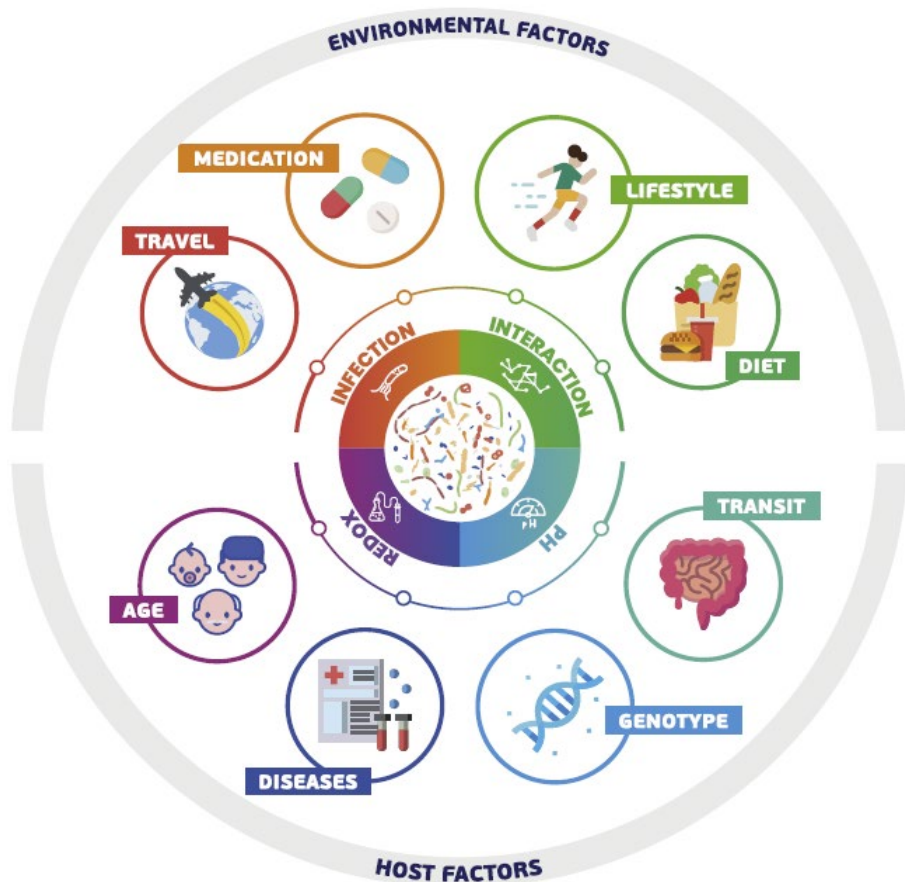


INRAE

Branches and ecological states of the gut microbiome - Journées Polepharma de Microbiomique - Rouen 2023

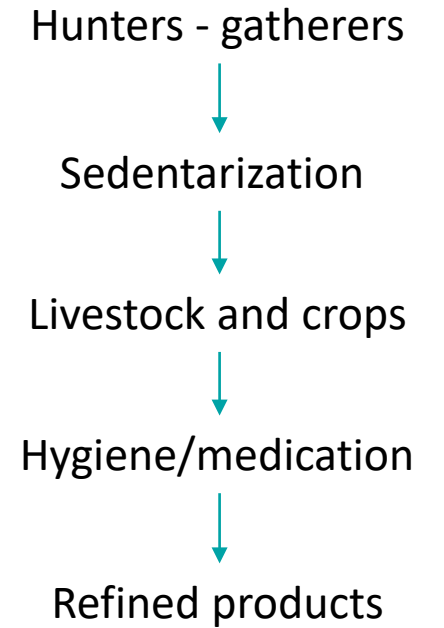
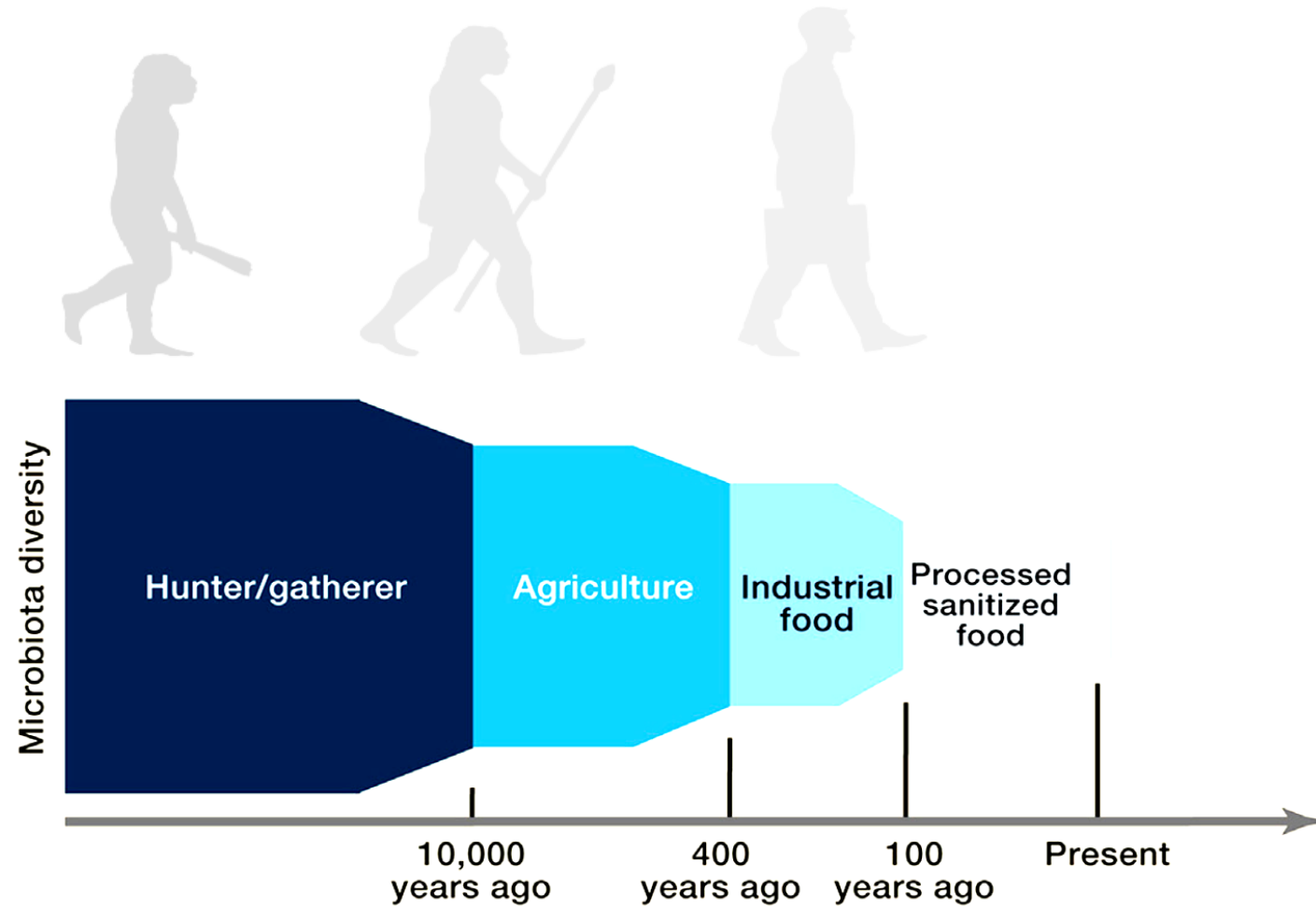
22.11.23 / Julien Tap / fme.micalis.fr

➤ Different factors shapes the human gut microbiome

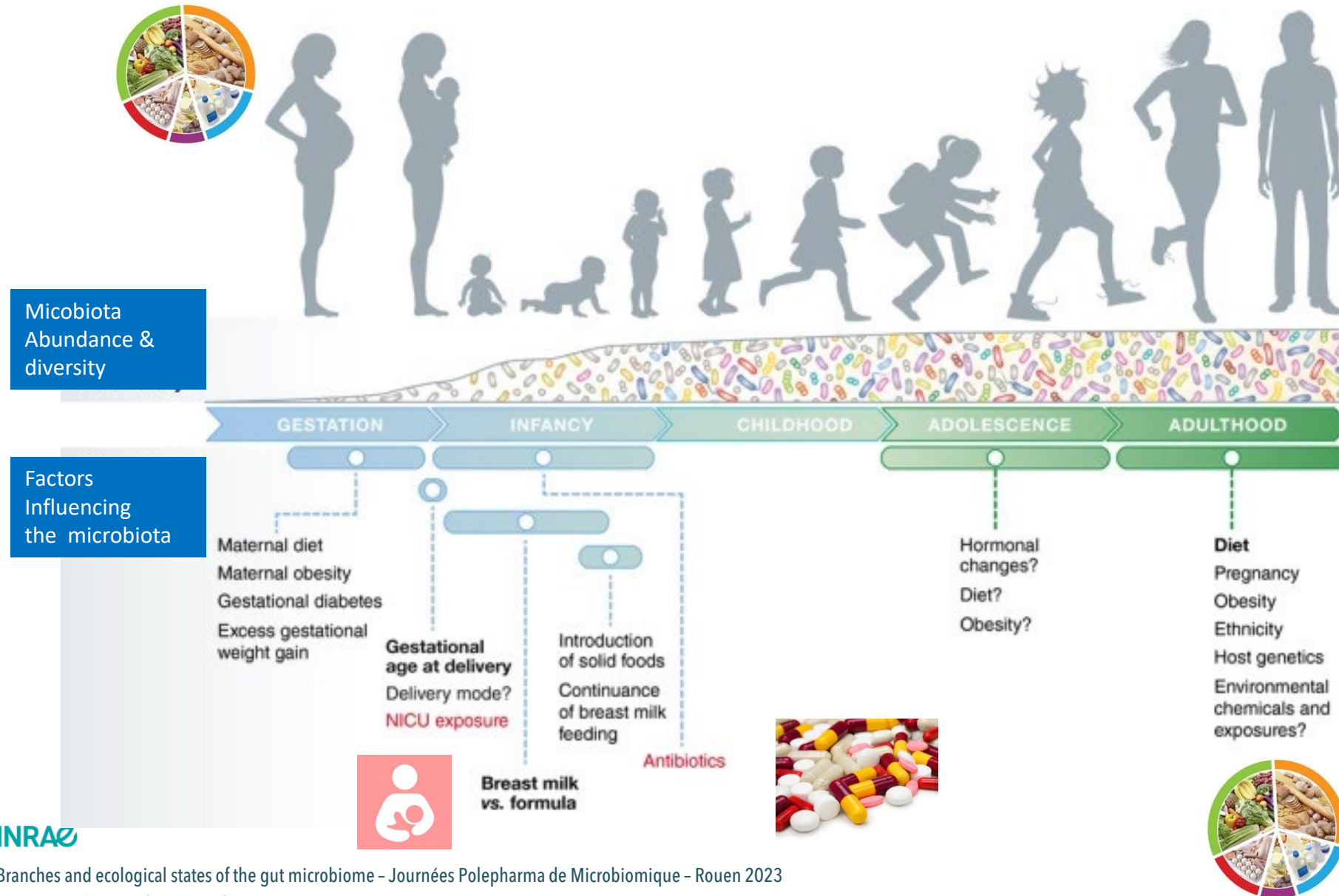


> Diet and lifestyle effect host microbiome symbiosis

Are we uncoupling our metagenome and our genome?



> Gut microbiome throughout life span



> Microbiome states resilience as key factor



Healthy state



Resistance



Recovery

Resilience

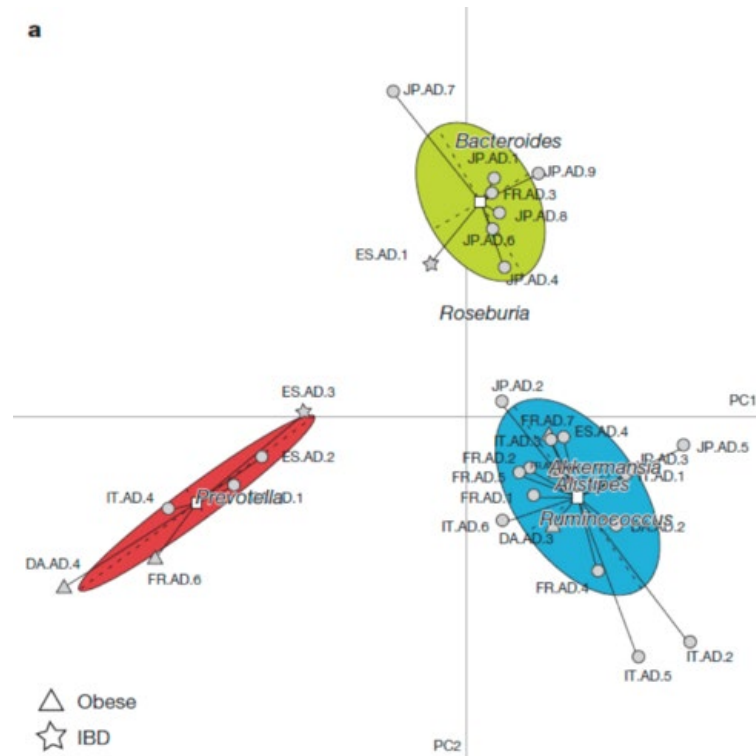


Healthy state

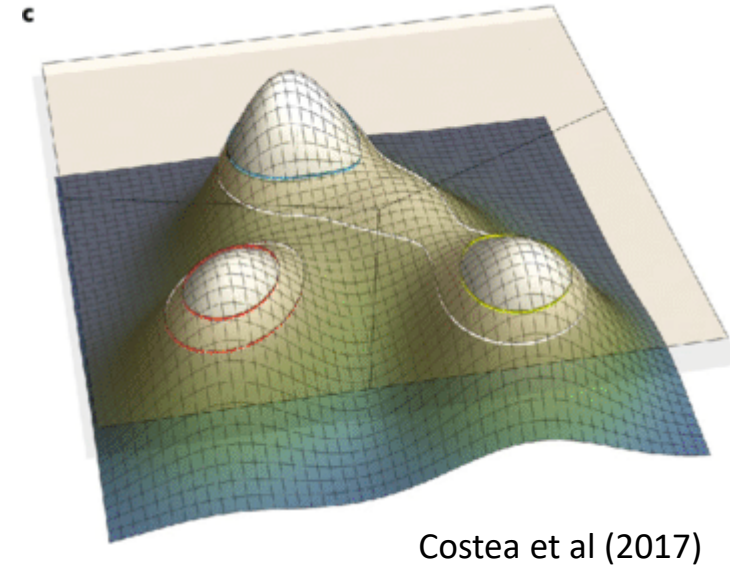


Degraded state

➤ Several attempts to decipher the microbiome structure



Arumugam, Raes et al (2010)



Costea et al (2017)

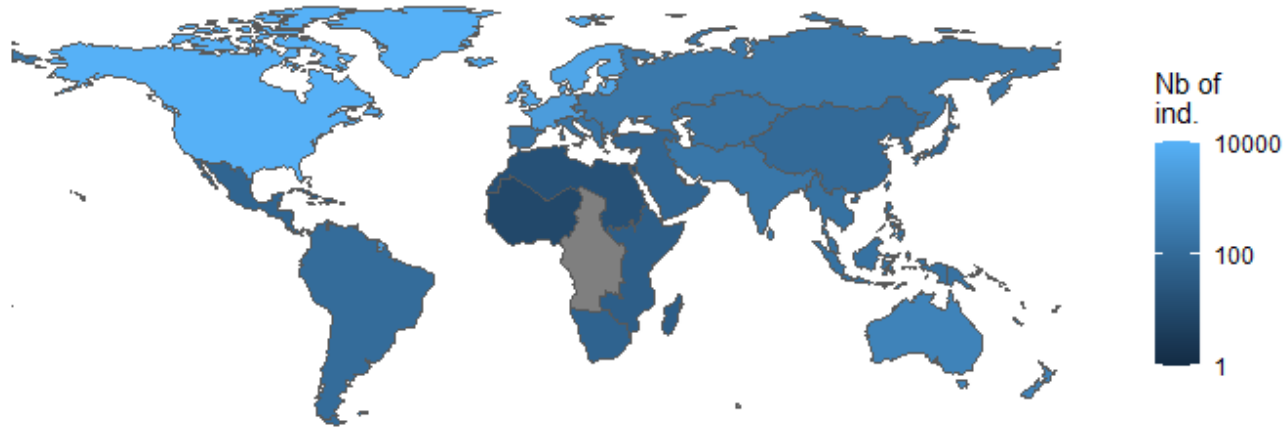
Dirichlet Multinomial Mixture (DMM) modeling

Limits:

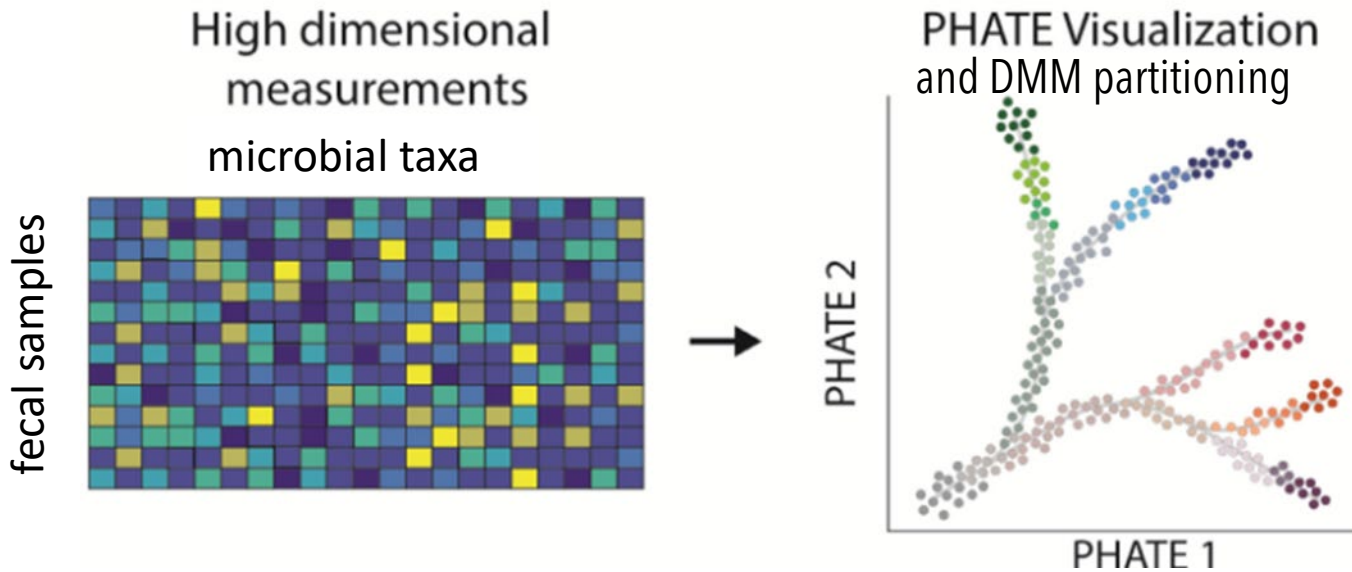
Few association with diet

Few stability assessment (e.g. with time-series)

> 35,000 human gut microbiome samples analyzed



New computational method that help observe **global and local structure** at the same time

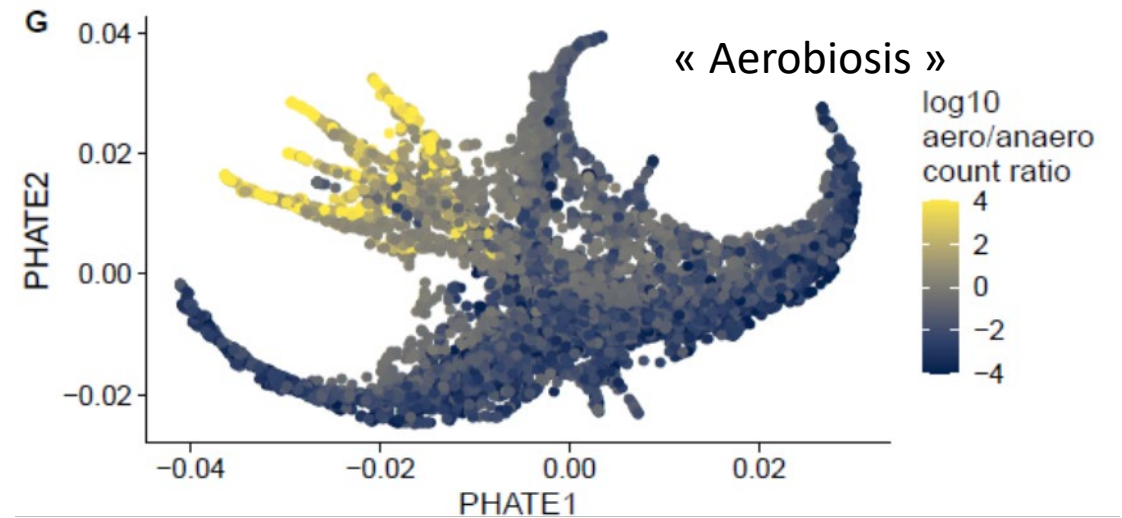
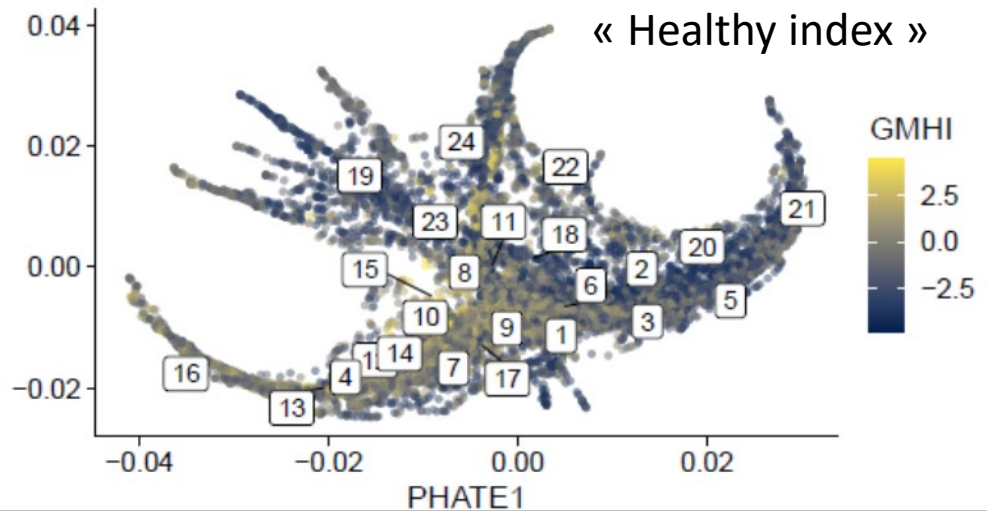
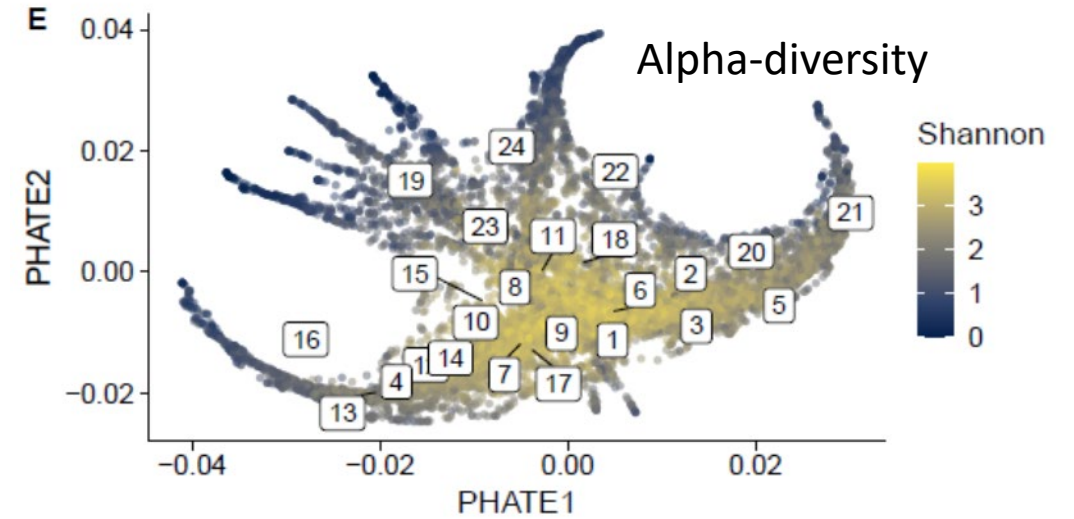
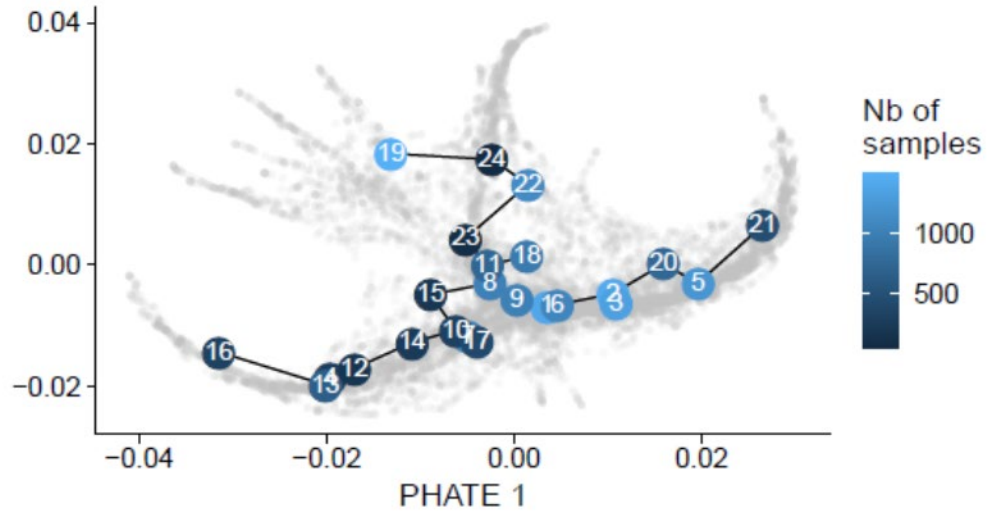


Time-series analysis to detect microbiome states

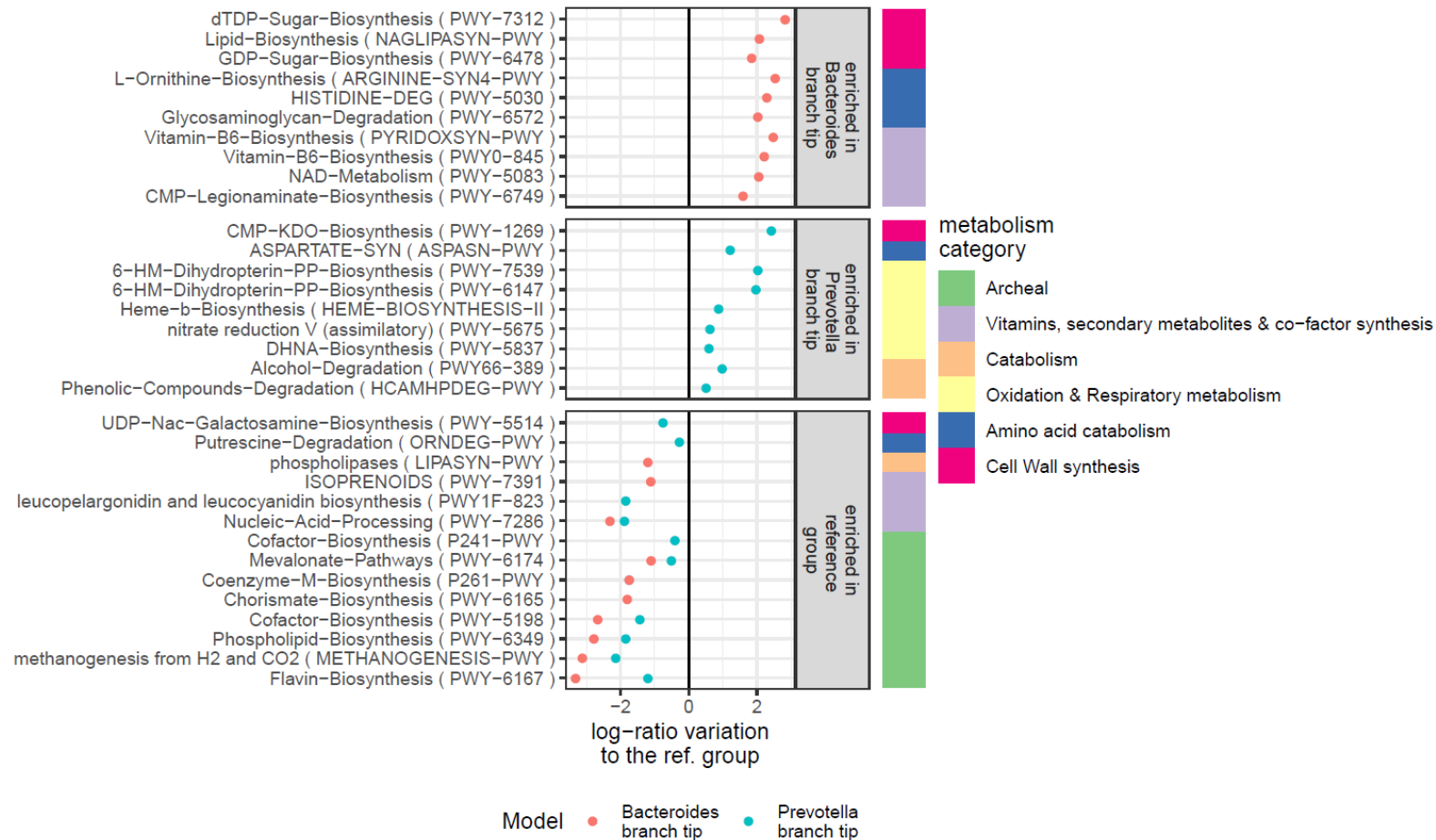
Region of birth, Lifestyle, diet, and health modelization



➤ Human Gut microbiome structured as branches



➤ Low-diversity tips of branches display functional shifts



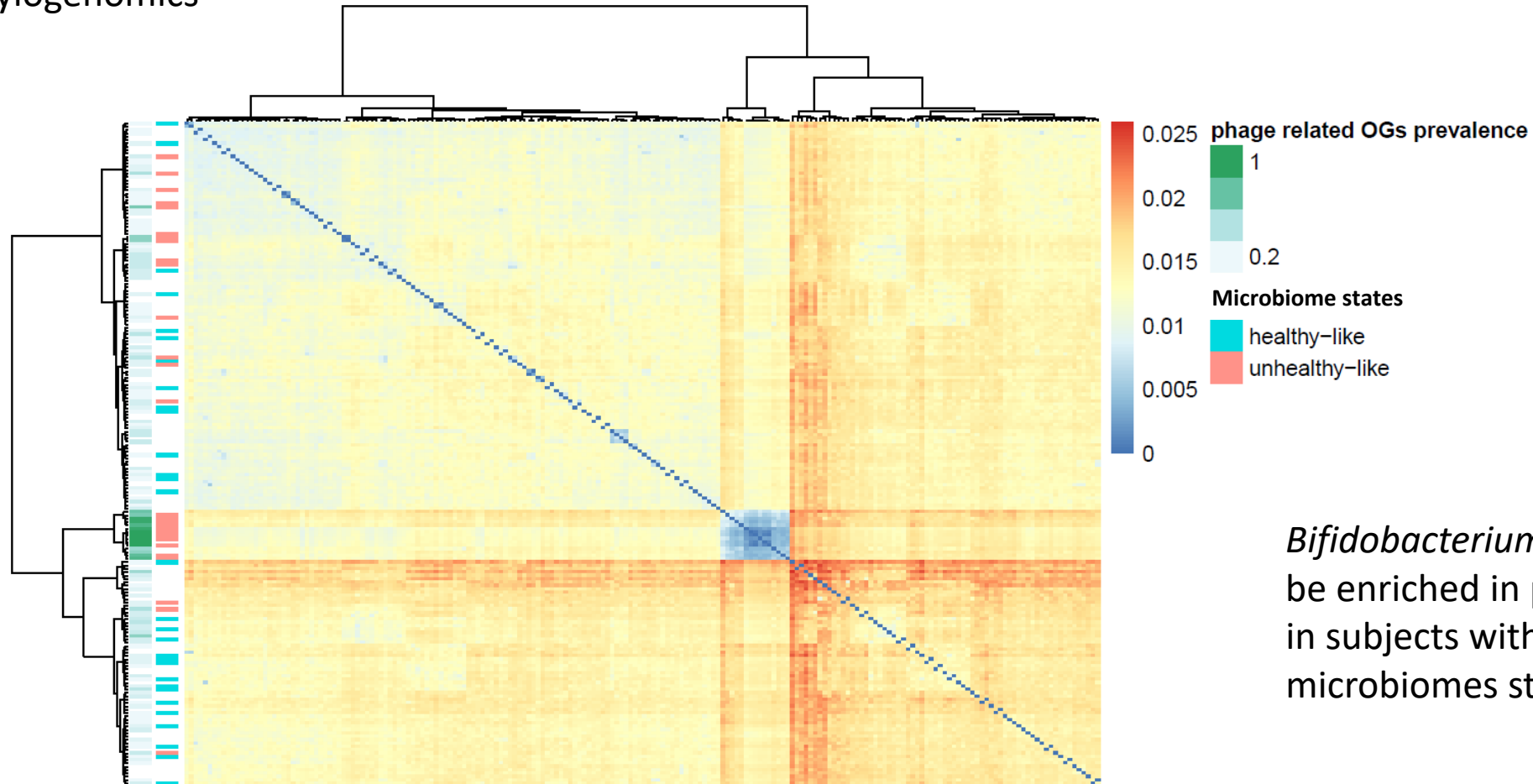
amino acid catabolism increase
in *Bacteroides* branch tip

oxidative stress response increase
in *Prevotella* branch tip



➤ Altered states showed functional differences within species

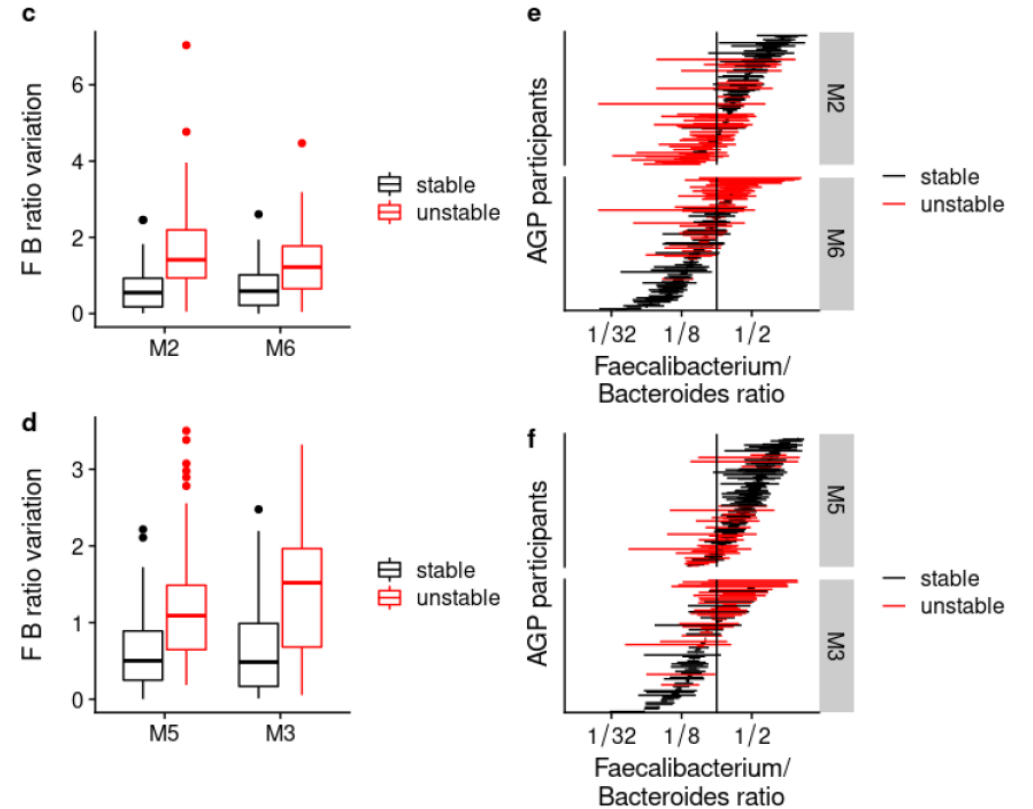
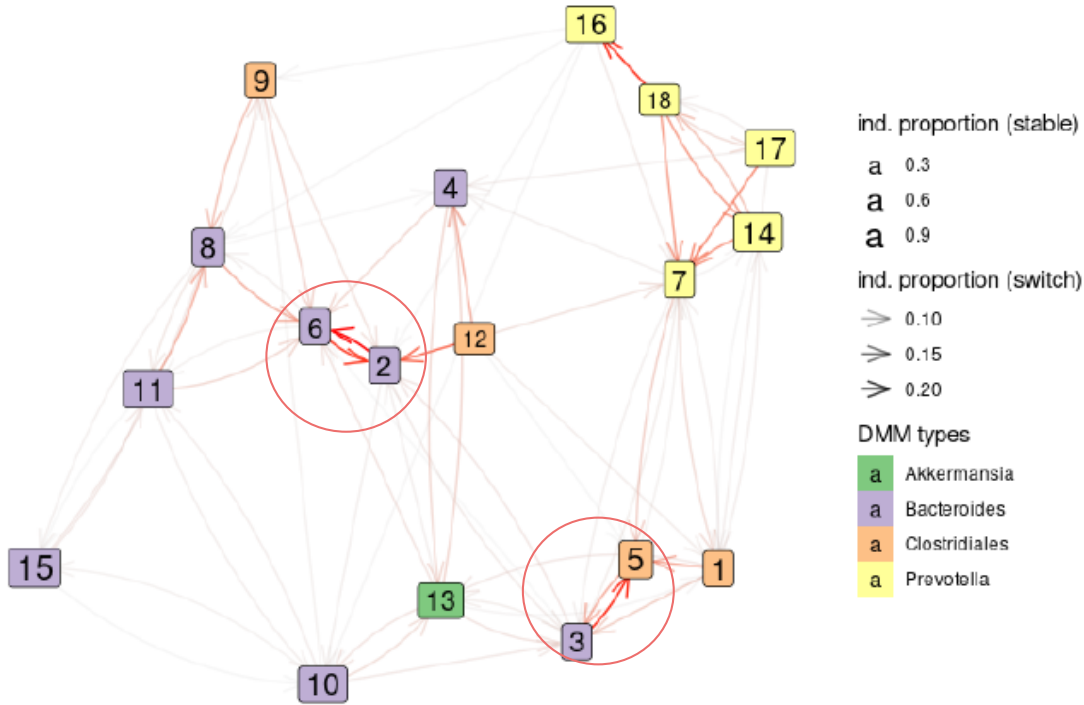
400 *B. bifidum* MAGS
phylogenomics



Bifidobacterium bifidum strains may be enriched in phage-related genes in subjects with altered gut microbiomes states

➤ Dynamics between partitions are associated to branches

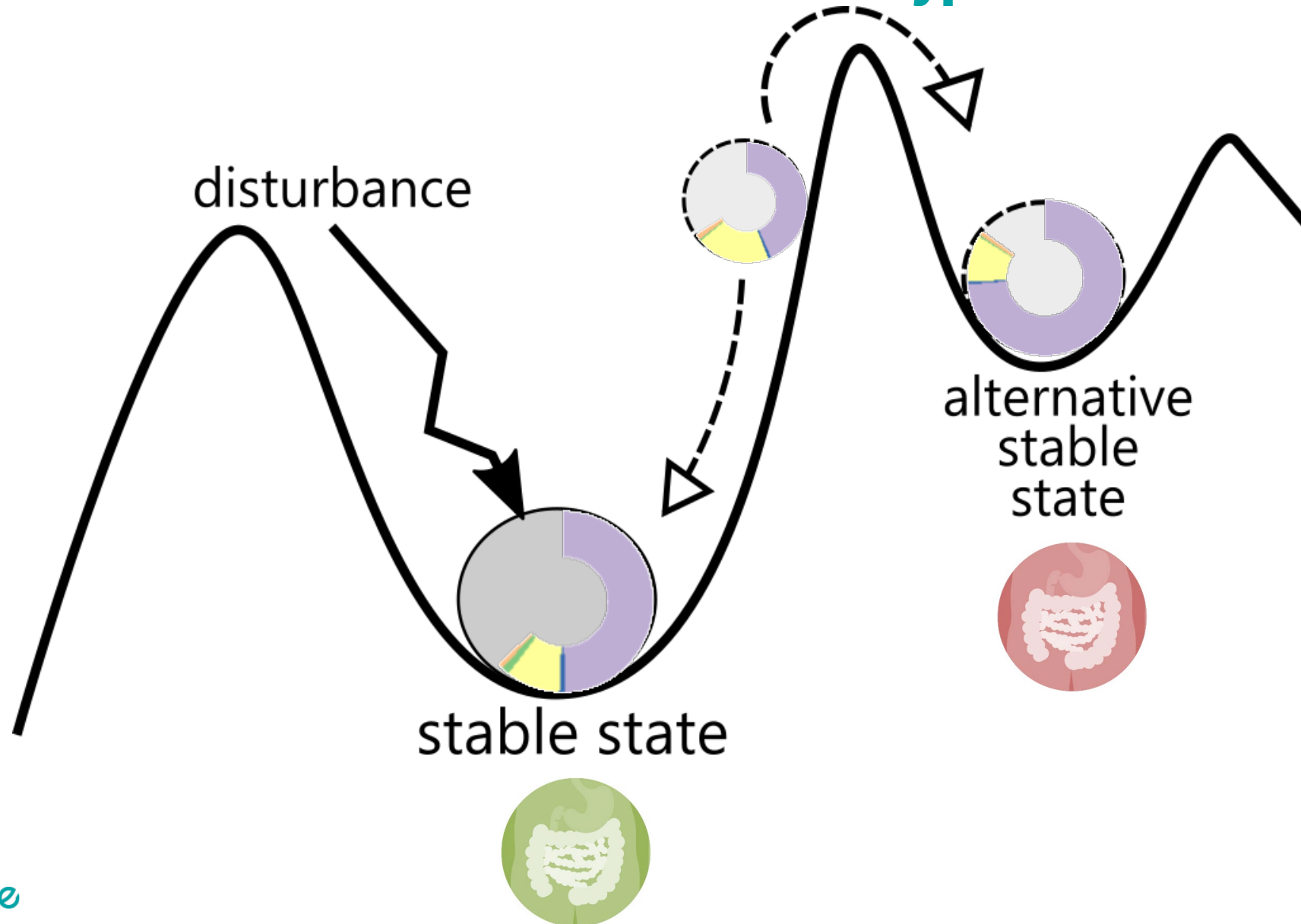
827 participants 2,998 samples 2,171 time-pairs



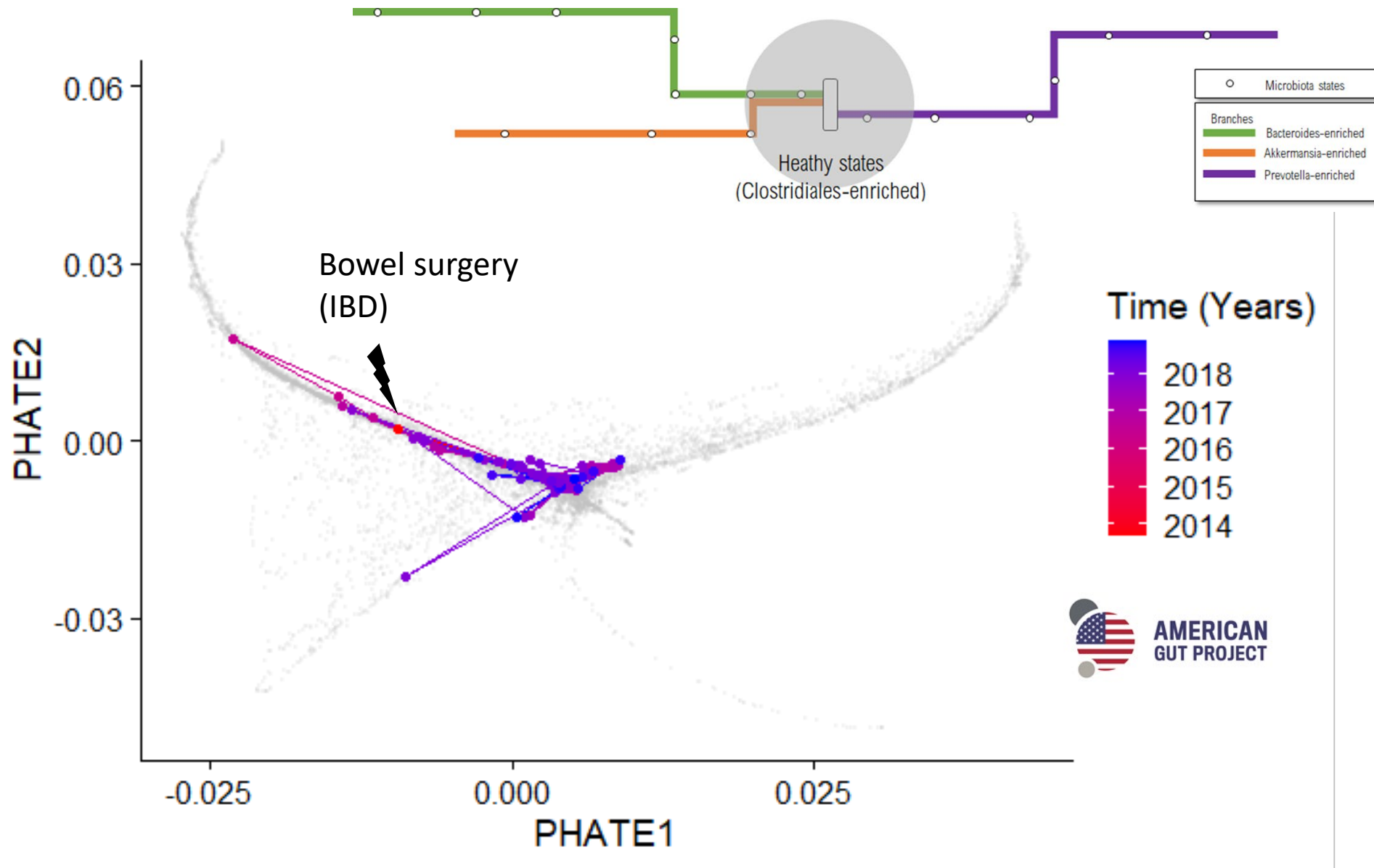
Faecalibacterium/Bacteroides as a tipping element explaining the switch between some states



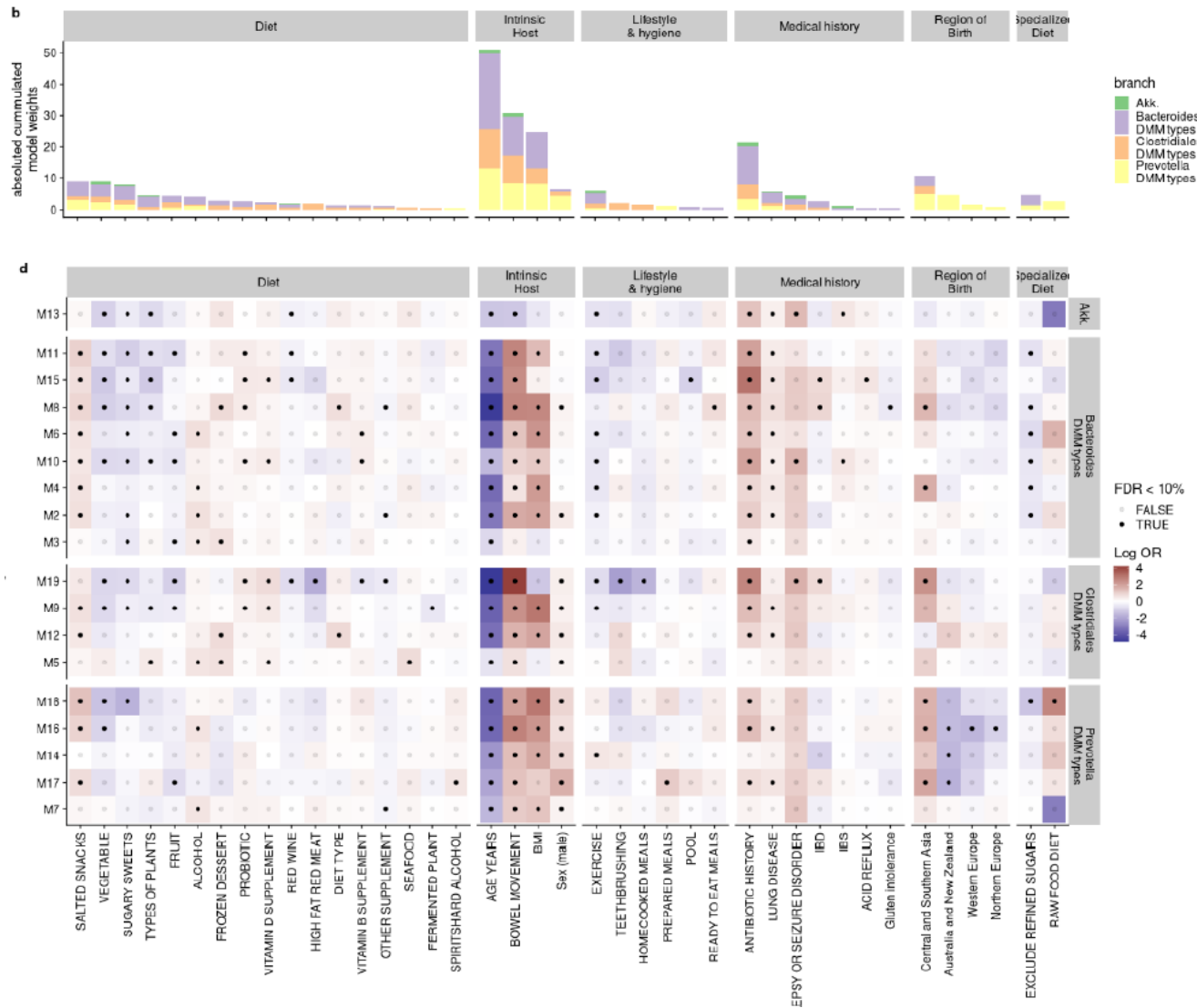
> Gut microbiome alternative stable states hypothesis



➤ Branches help to monitor gut microbiome recovery



➤ Gut microbiome states are differentially associated with host and env factors

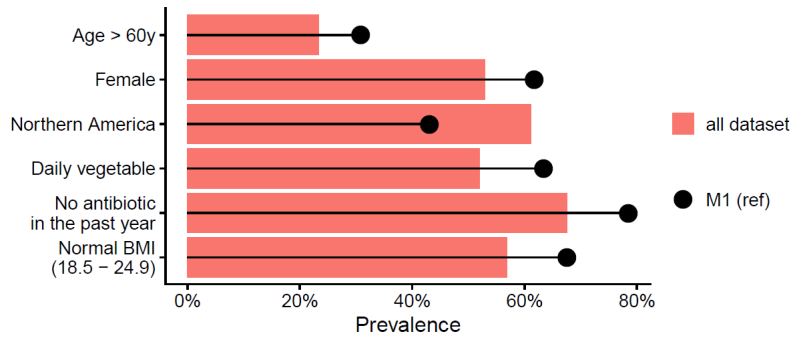


Sex, exercises frequency and **region of birth** associated differentially between branches

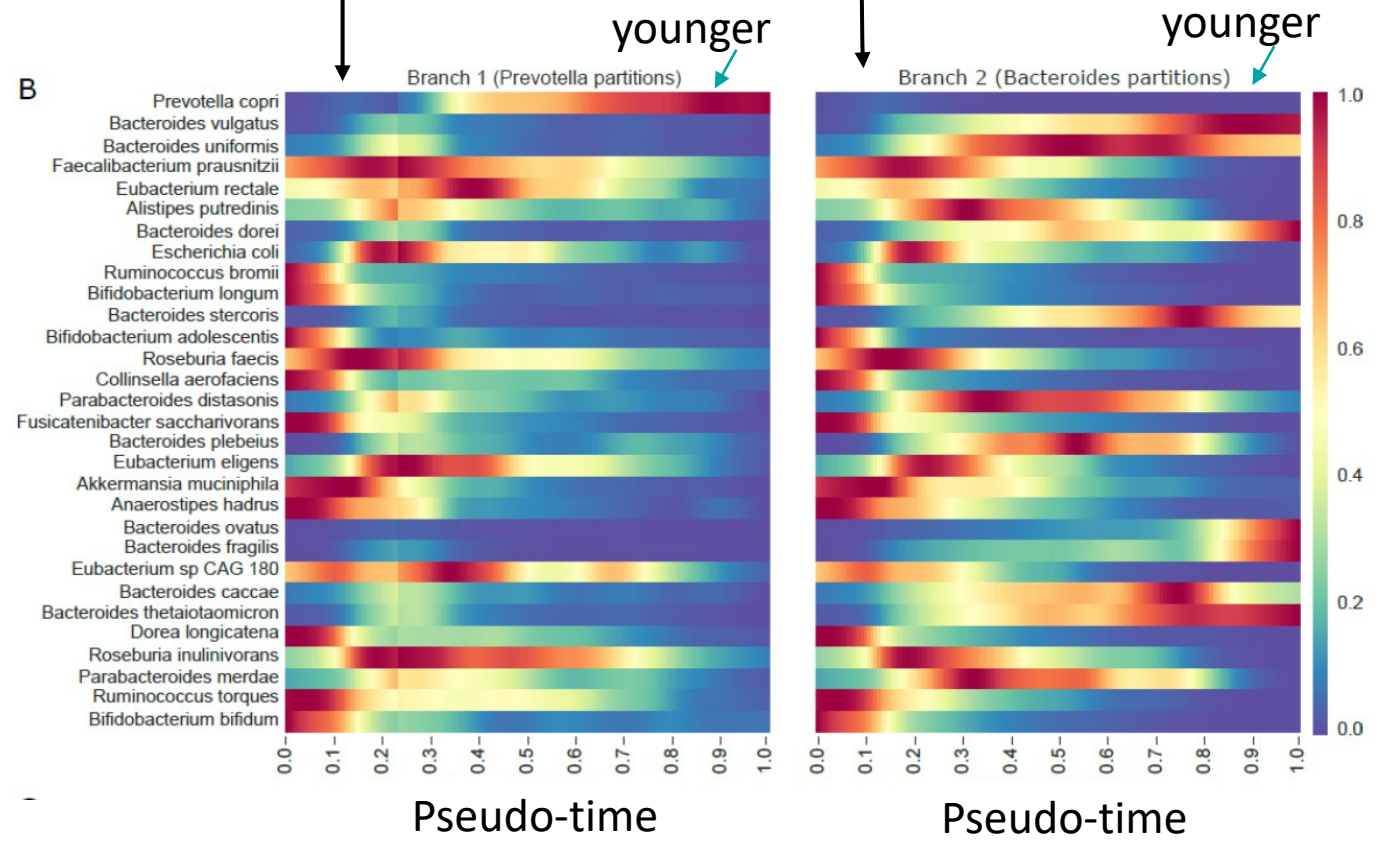
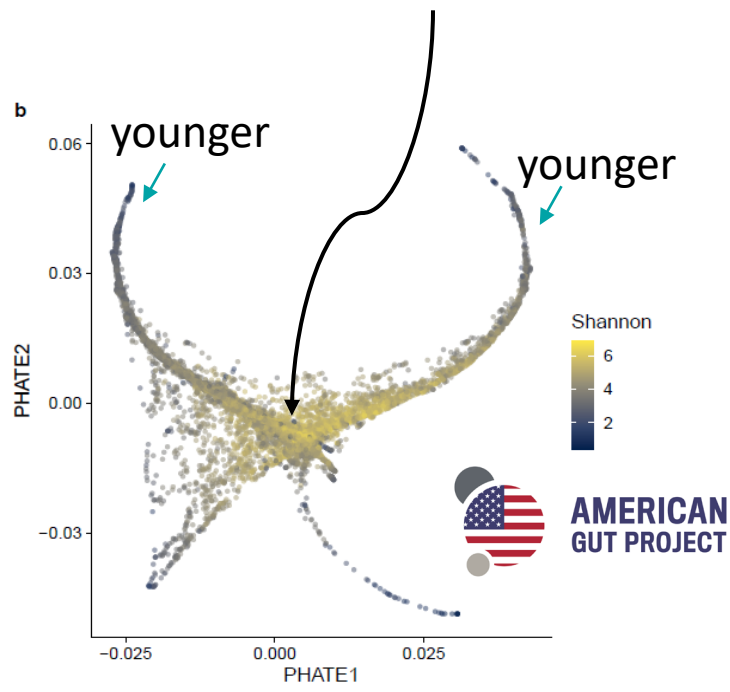
Lifestyle and hygiene associated with altered state within *Bacteroides* branch

Specialized diet associated with altered state within *Prevotella* branch

> Do we already observe a intergenerationally mass extinction ?



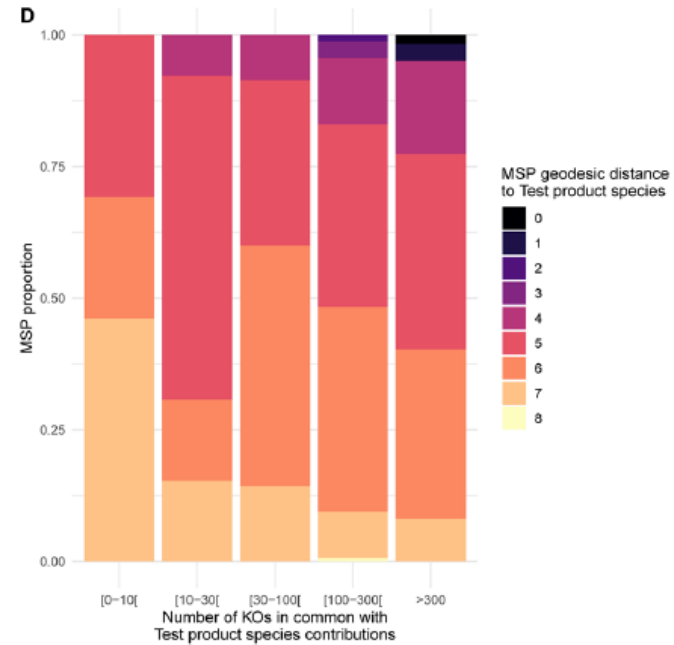
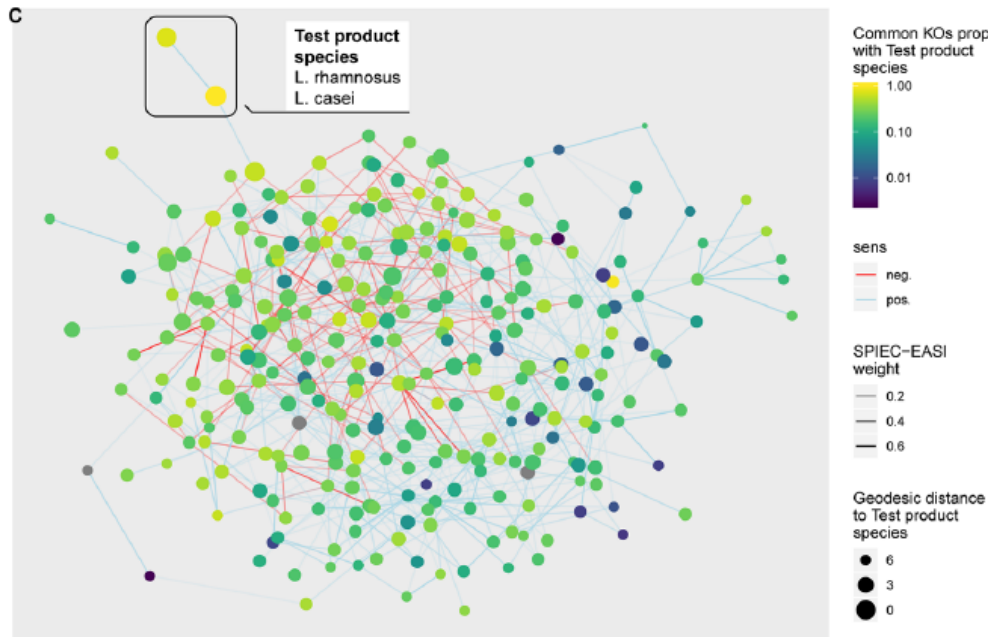
Older and healthy diet and lifestyle



INRAE

➤ Probiotics engraftment are gut microbiome baseline dependent

Modular coalescence between gut and biotics species



“Engraftment” as function of existing niche and metabolic pathway

Alvarez et al., 2020

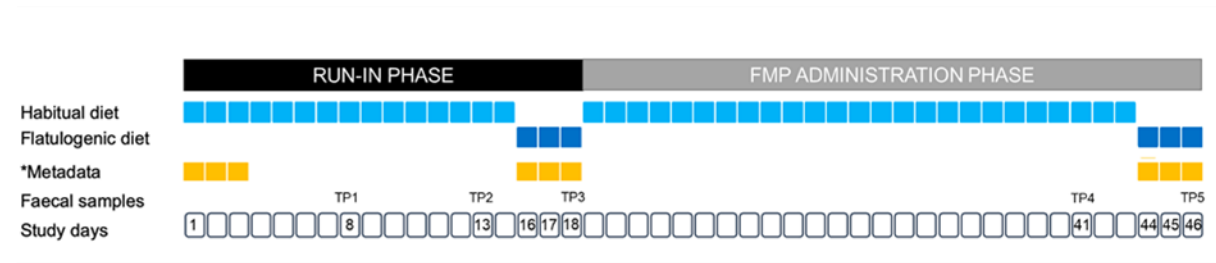


INRAE

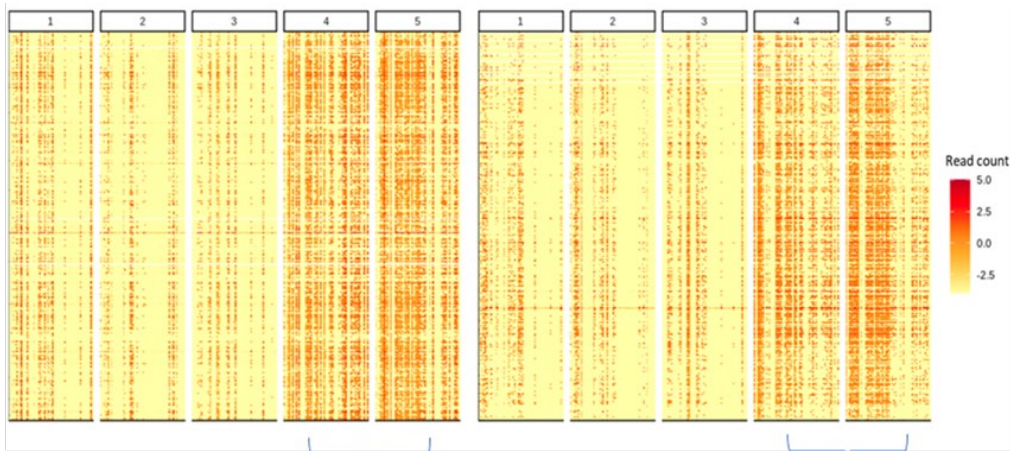
Branches and ecological states of the gut microbiome - Journées Polepharma de Microbiomique - Rouen 2023

22.11.23 / Julien Tap / fme.micalis.fr

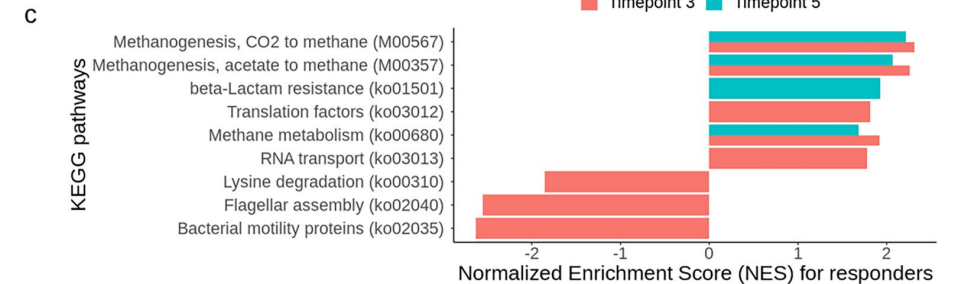
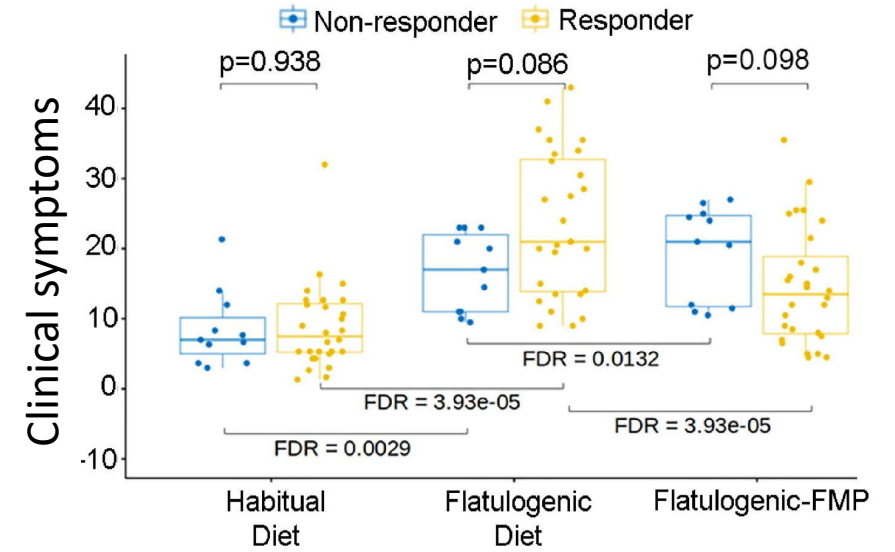
➤ Probiotics clinical effect is gut microbiome baseline dependent



flatulogenic diet (61% carbohydrates, 25% proteins and 14% fat, 27 g of fiber per day)



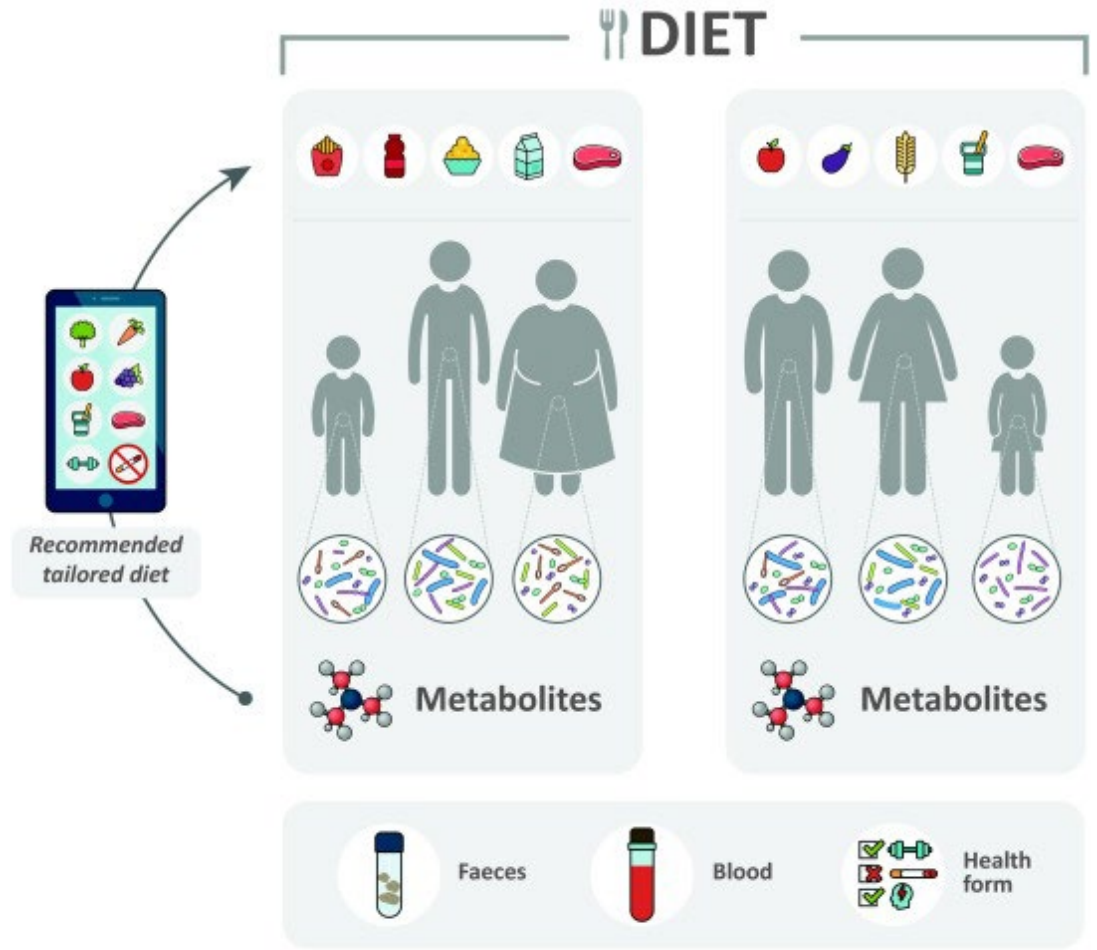
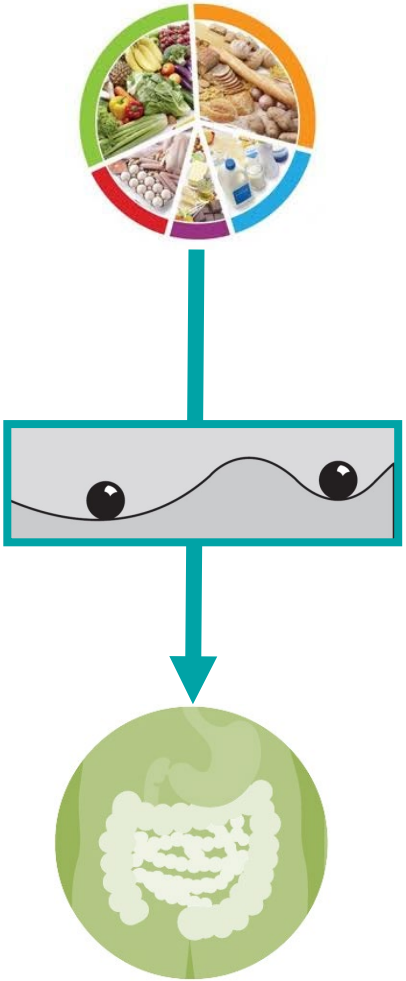
After FMP consumption, FMP active strains detected by metatranscriptomics



After FMP intake (TP5), higher responder group showed higher methanogenesis activity than low-responders



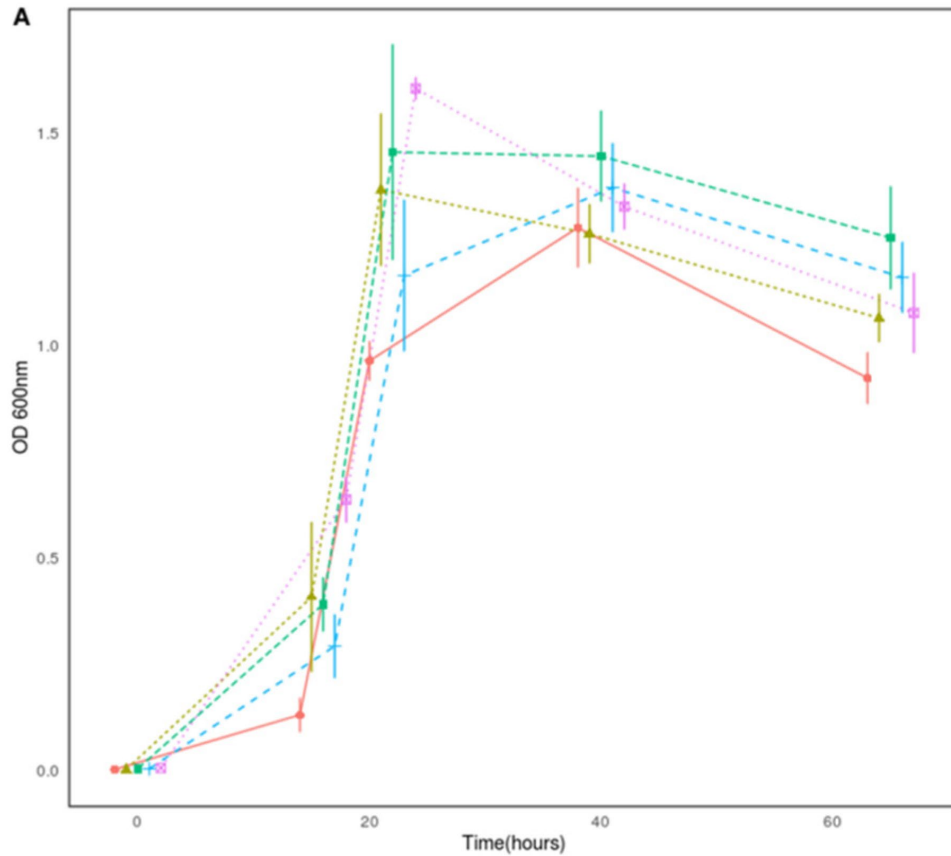
> Endgame : From gut microbiome states to next-gen biotics



Trends in Microbiology

Prevent gut microbiome critical transition to strengthen its resilience using next-gen biotics

➤ Towards selecting strains with abilities to prevent tipping point in gut microbiota



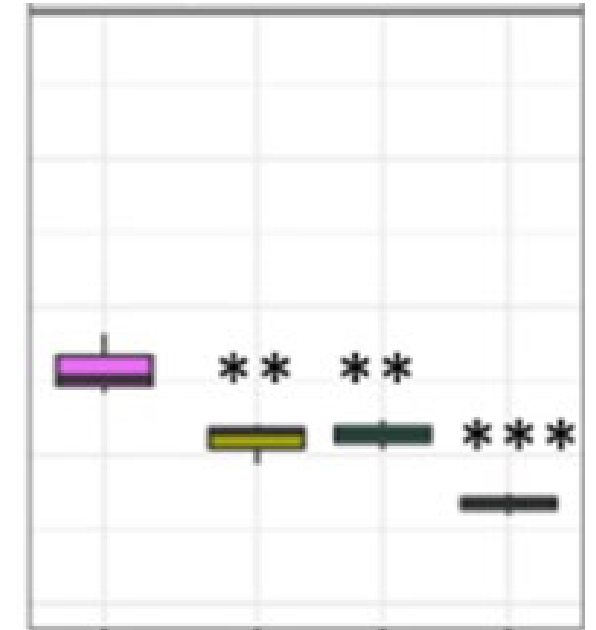
umax



F.prau

F.Prau
+ LABs lysate

Decay slope



F.prau

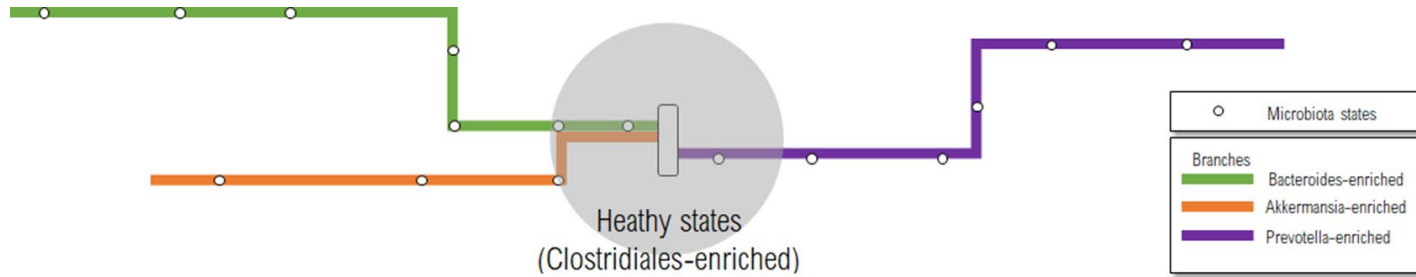
F.Prau
+ LABs lysate

Increase of peptidoglycan levels for cell wall formation *F.prau*

Lebas, Derrien and colleagues (2020)



> Take home messages



- Gut microbiome ecological landscape is made of local states that are dynamically linked within "branches" where critical transition occurred
- Biotics can help but effects may be personalized thank to gut microbiota states at baseline
- Prototyping next-gen biotics should include gut tipping elements during screening for better personalized and beneficial effects.

> Acknowledgments



UC San Diego

Rob Knight's lab
Daniel McDonald
Franck Lejzerowicz

...



Muriel Derrien
Patrick Veiga
Boris Le Nevé

...



Chays Mannichanh
Fernando Azpiroz
Iñigo Oyarzun

...



INRAE

Branches and ecological states of the gut microbiome - Journées Polepharma de Microbiomique - Rouen 2023

22.11.23 / Julien Tap / fme.micalis.fr