



**HAL**  
open science

## Additive deleterious effects of delivery mode on perinatal brain injuries: microbiota's fault

Sandrine Auger, Cecile Morin, Cindy Bokobza

### ► To cite this version:

Sandrine Auger, Cecile Morin, Cindy Bokobza. Additive deleterious effects of delivery mode on perinatal brain injuries: microbiota's fault. 16th European Meeting on Glial Cells in Health and Disease, Jul 2023, Berlin, Germany. hal-04328435

**HAL Id: hal-04328435**

**<https://hal.inrae.fr/hal-04328435v1>**

Submitted on 7 Dec 2023

**HAL** is a multi-disciplinary open access archive for the deposit and dissemination of scientific research documents, whether they are published or not. The documents may come from teaching and research institutions in France or abroad, or from public or private research centers.

L'archive ouverte pluridisciplinaire **HAL**, est destinée au dépôt et à la diffusion de documents scientifiques de niveau recherche, publiés ou non, émanant des établissements d'enseignement et de recherche français ou étrangers, des laboratoires publics ou privés.



# Additive deleterious effects of delivery mode on perinatal brain injuries: microbiota's fault

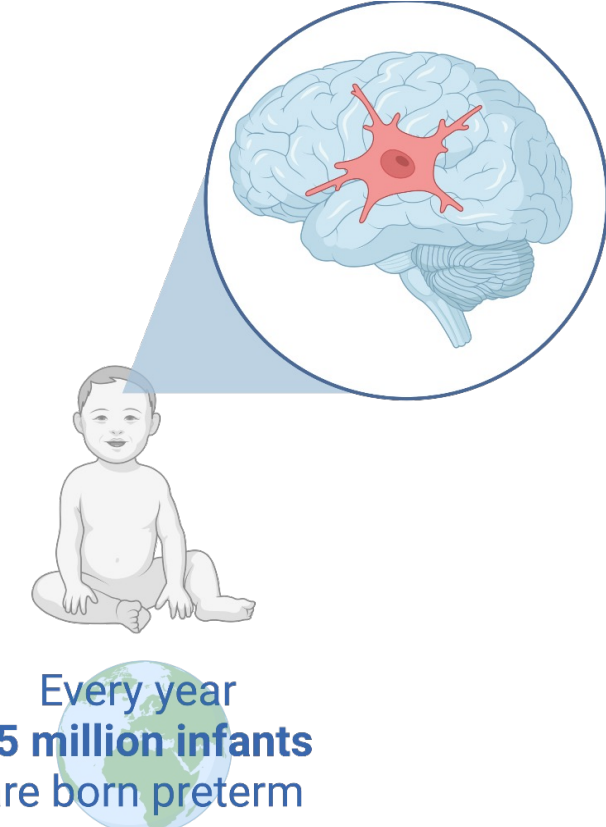
C. Morin, D. Guenoun, F. Faure, I. Sautet, S. Diao, V. Faivre, J. Hua, C. Demene, M. Tanter, L. Schwendimann, P. Young-Ten, T. Bourgeois, N. Ramanantsoa, B. Matrot, J. Gallego, S. Auger, P. Gressens, J. Van Steenwinckel\*, C. Bokobza\*

Inserm, UMR1141 Neurodiderot, Paris, France

Physics for Medicine Paris – Inserm, ESPCI Paris-PSL, CNRS – Paris, France

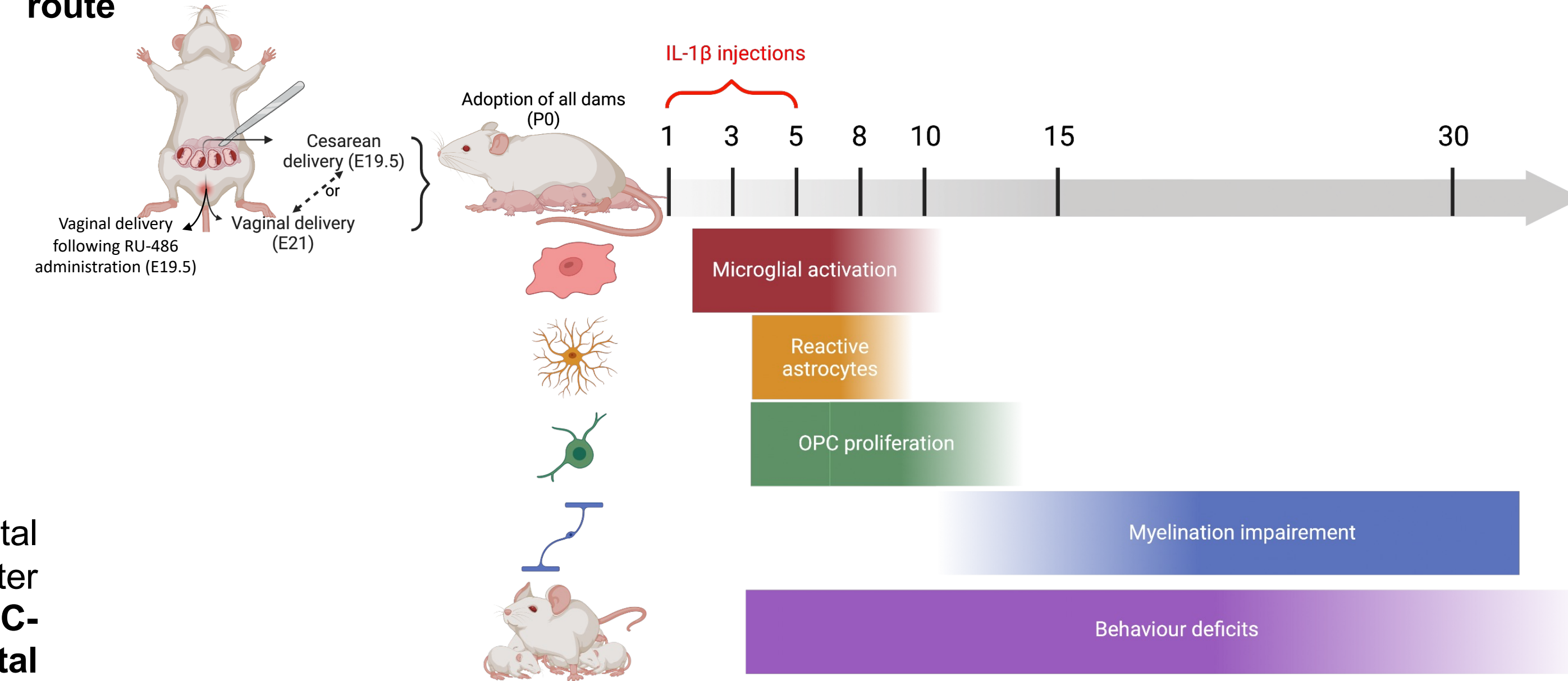
INRAE, Université Paris-Saclay, AgroParisTech, UMR 1319 Micalis Institute, 78352 Jouy-en-Josas, France.

## Introduction



Most cases are associated with materno-fetal infection/inflammation, leading to white matter injuries (WMI). Preterm infants delivered by C-section are at higher risk of neurodevelopmental disorders (NDD) compared with vaginally delivered infants.

## A mouse model for brain injuries associated with preterm birth and differential delivery route



Are there additive effects of (i) induced vaginal preterm birth or (ii) cesarean surgical preterm birth with perinatal inflammation?

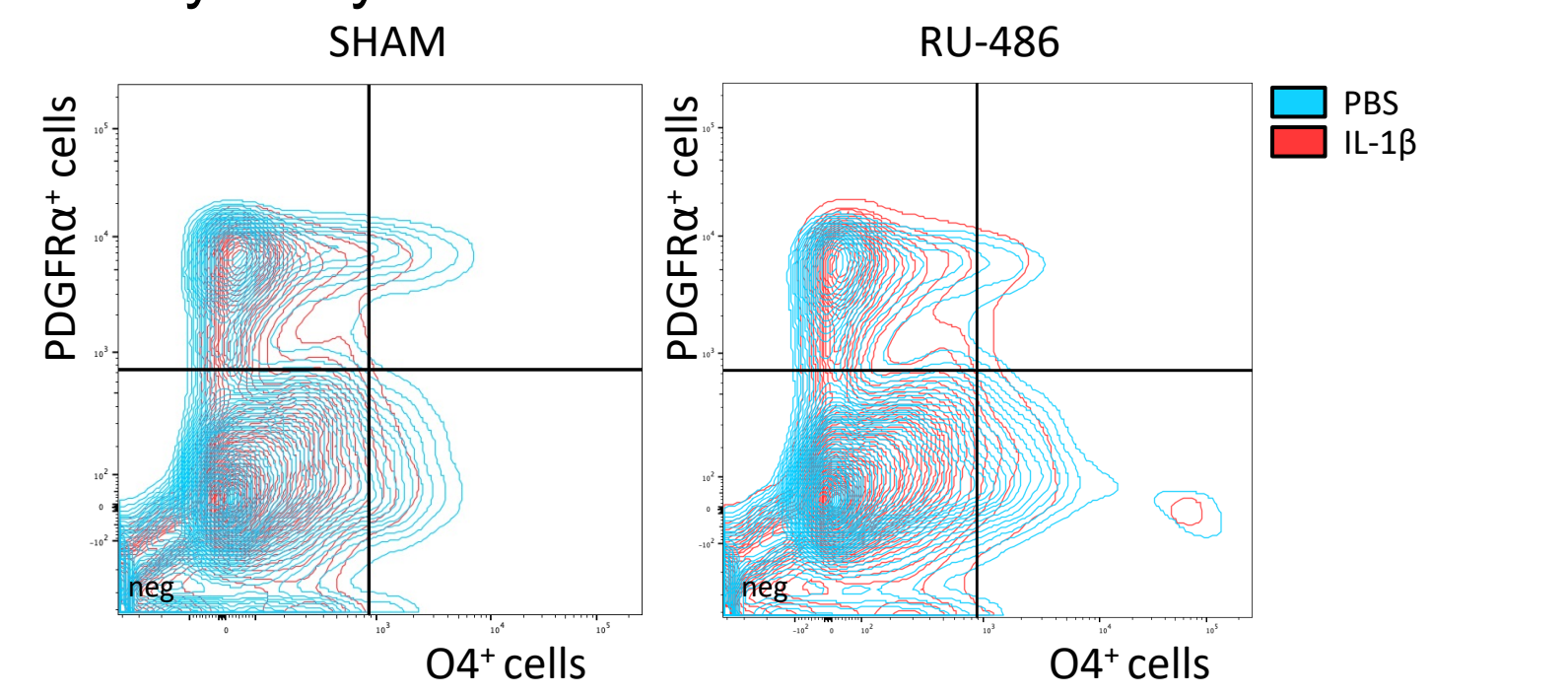
## Mifepristone (RU-486) administration induced vaginal preterm delivery without affecting WMI

Morin et al. (2022)

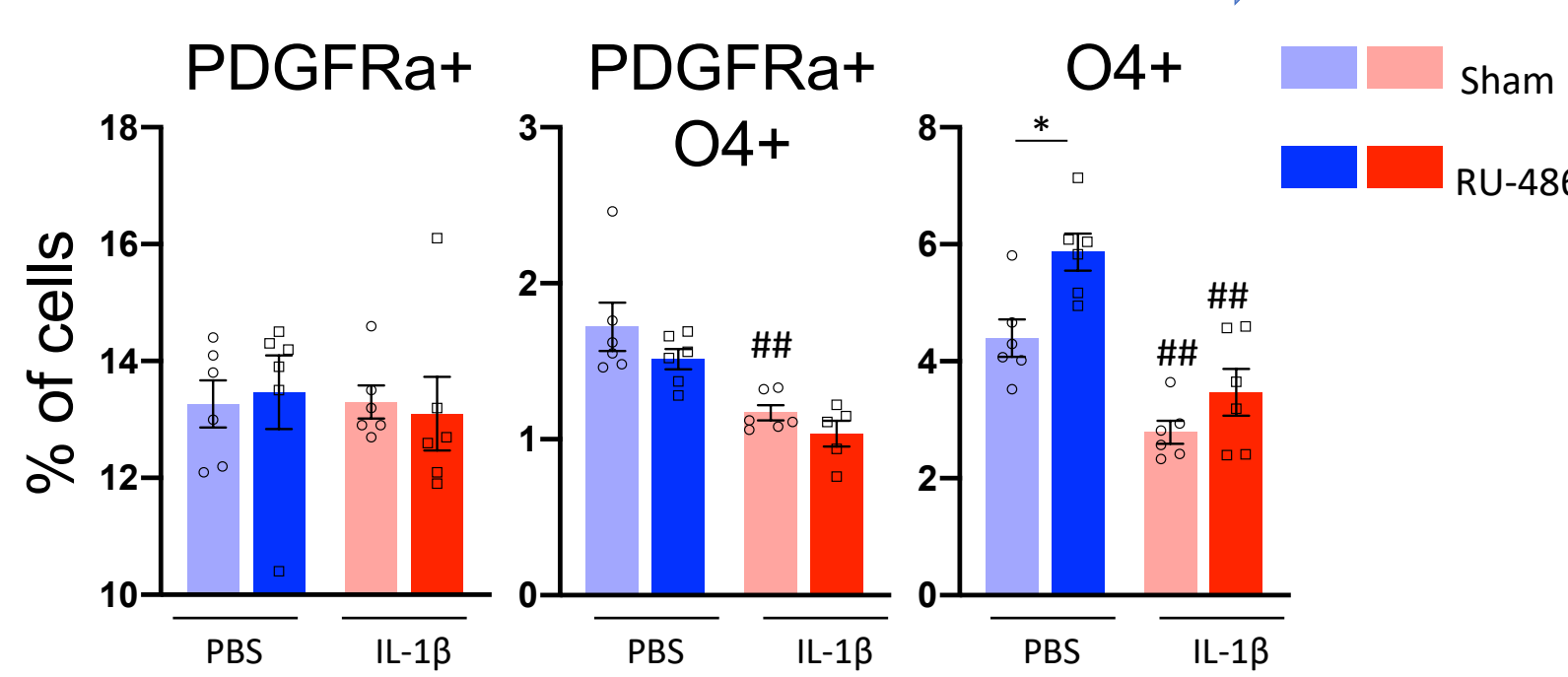
Mifepristone (RU-486) is a glucocorticoid receptor (GR) antagonist. As an anti-progesterone drug, RU-486 is used in pharmacological abortion, and to induce delivery rarely for living fetuses and mostly in case of *in utero* fetal death.

Oligodendrocytes differentiation, the first victims of perinatal inflammation, is still blocked.

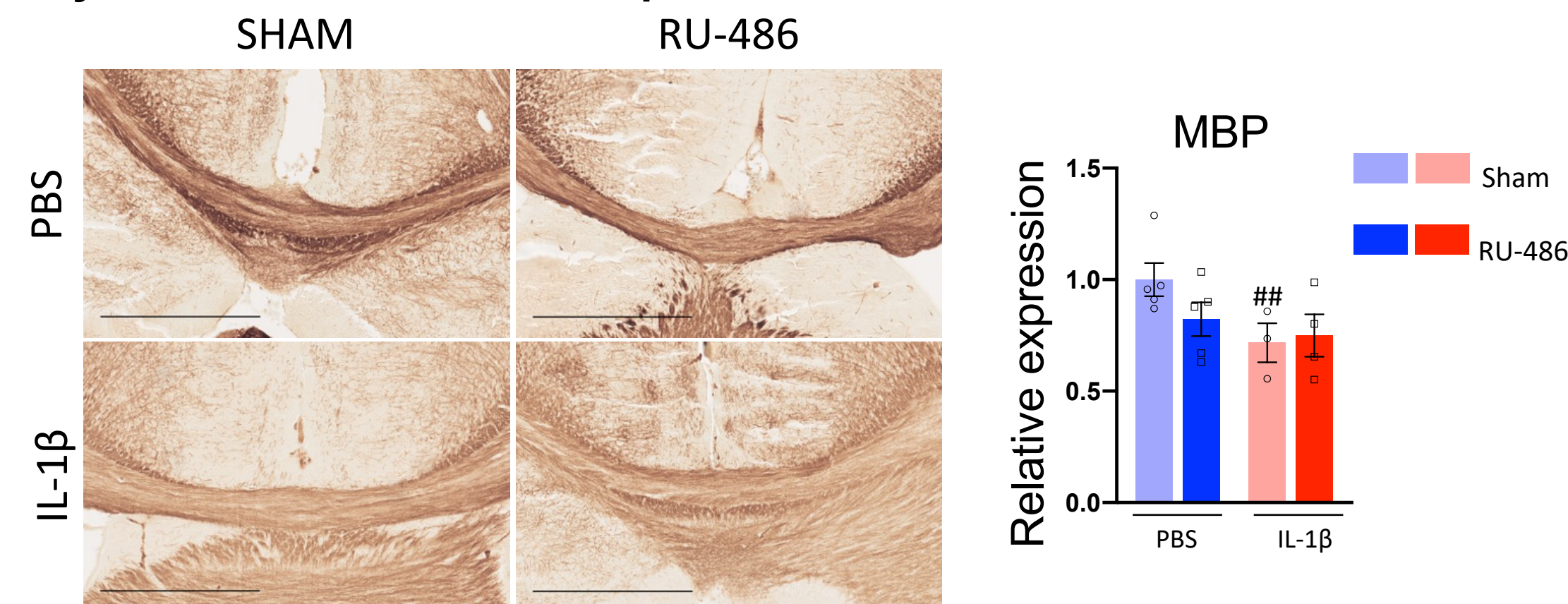
### P5 Flow Cytometry analysis



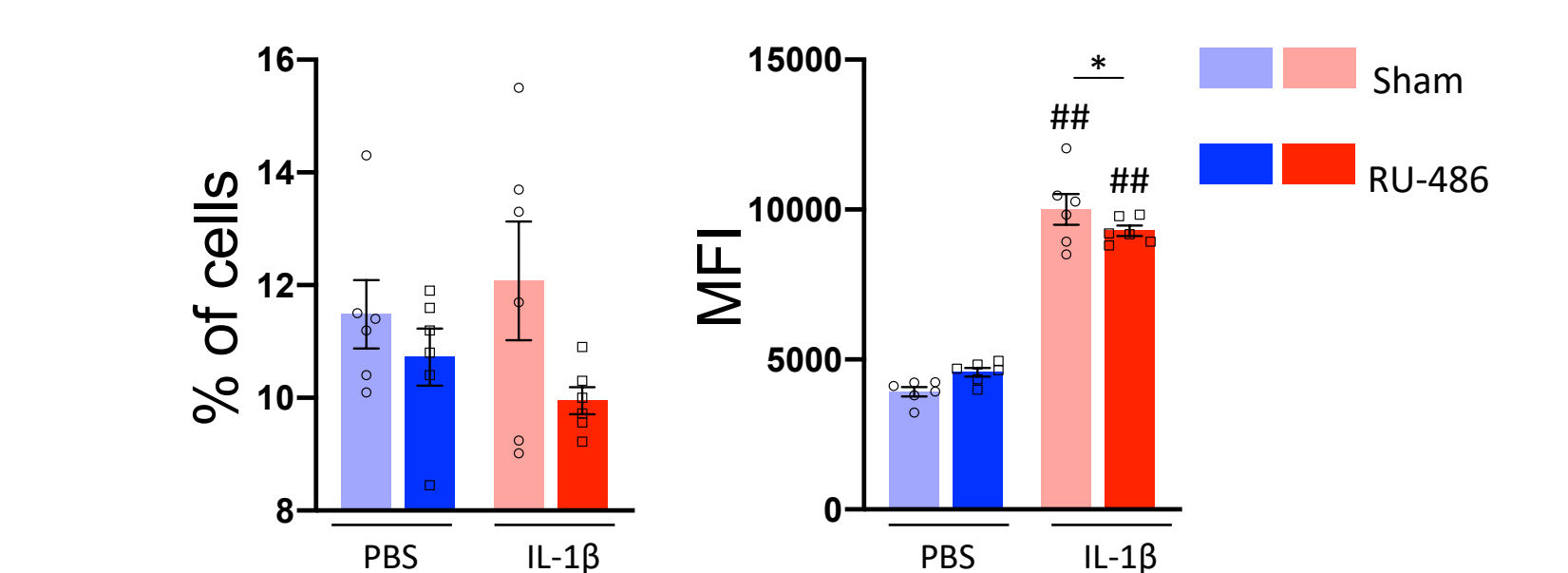
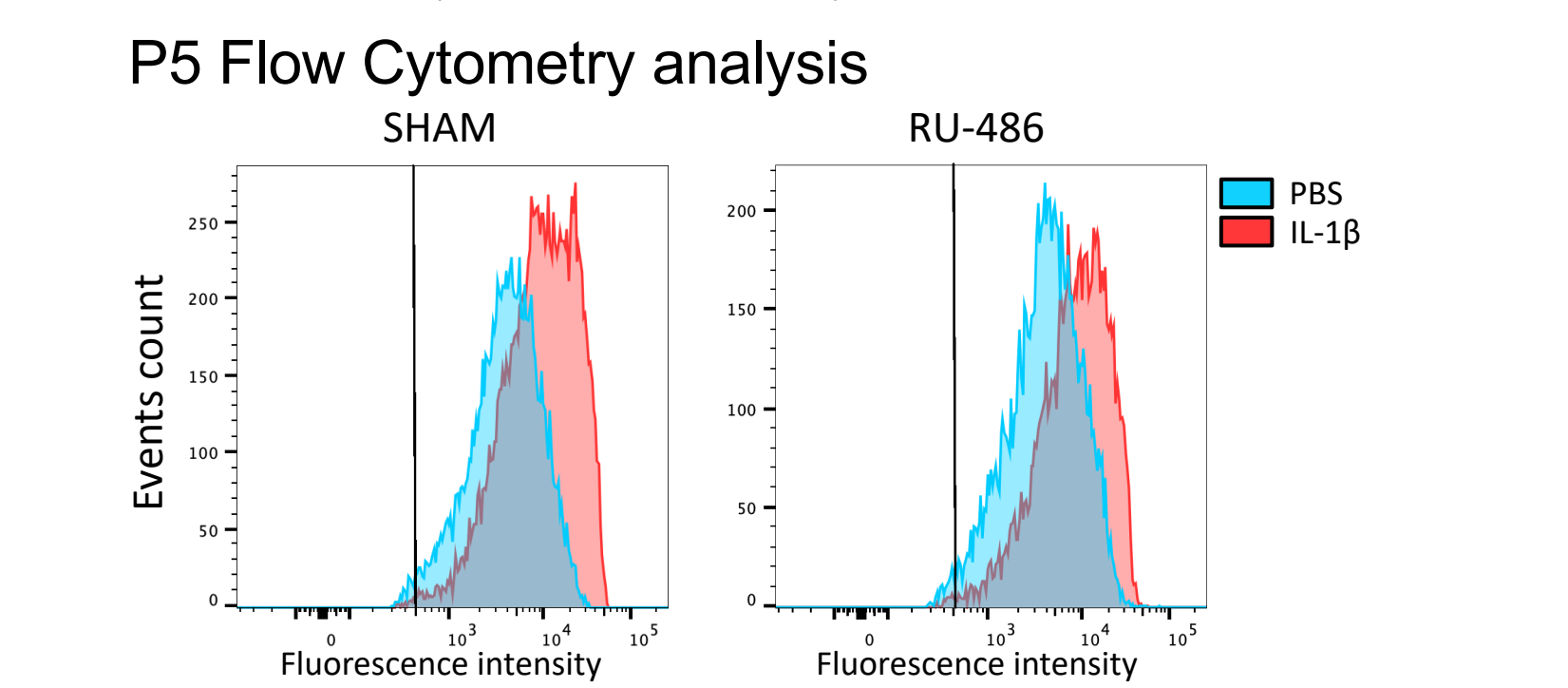
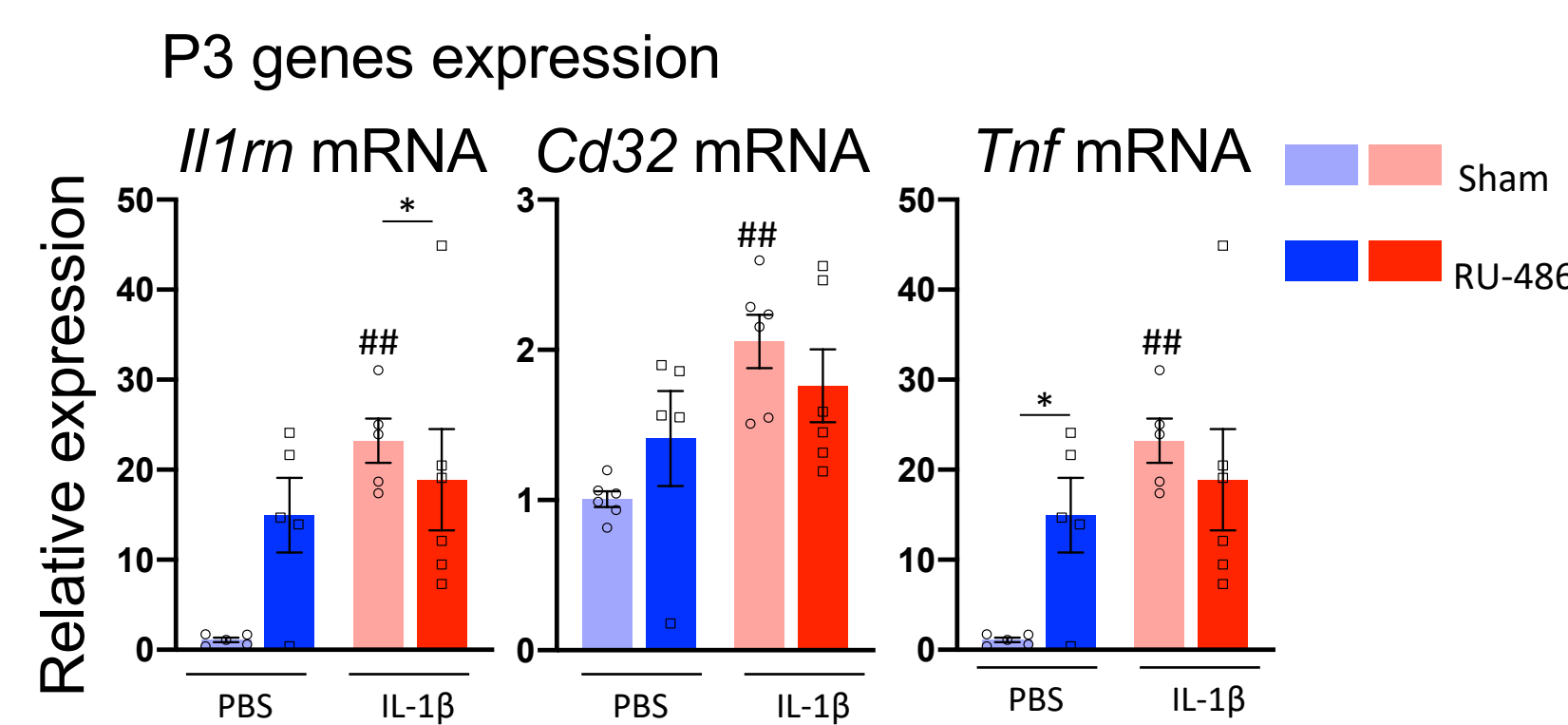
Oligodendrocytes differentiation



### Myelination deficit of the corpus callosum is still observed



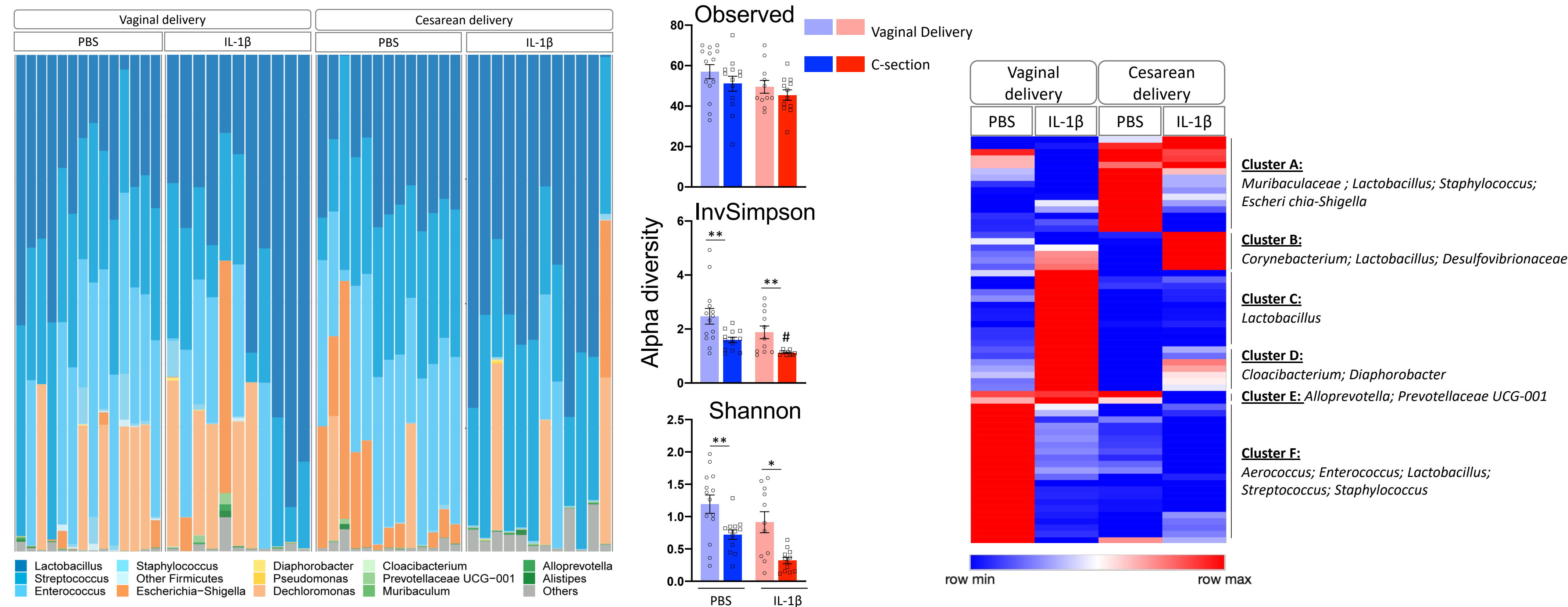
### Microglial reactivity (CD11b+) is restrained by RU-486



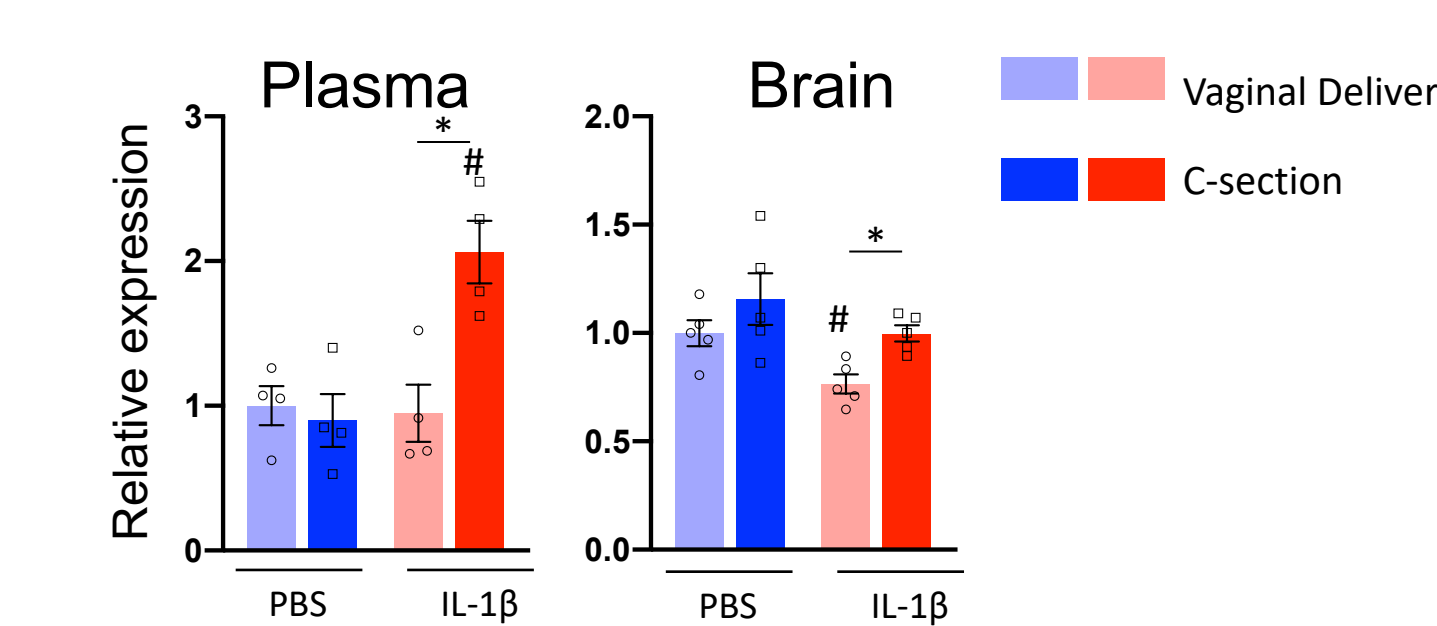
## Preterm birth by cesarean delivery worsens WMI

Global cesarean section (C-sections) rates have increased in recent decades. Numerous studies have revealed the existence of a "gut-brain axis" and the impact of an alteration of gut microbiota composition in brain diseases. Many factors in early life such as the mode of delivery or preterm birth could lead to disturbances in the assembly and maturation of gut microbiota.

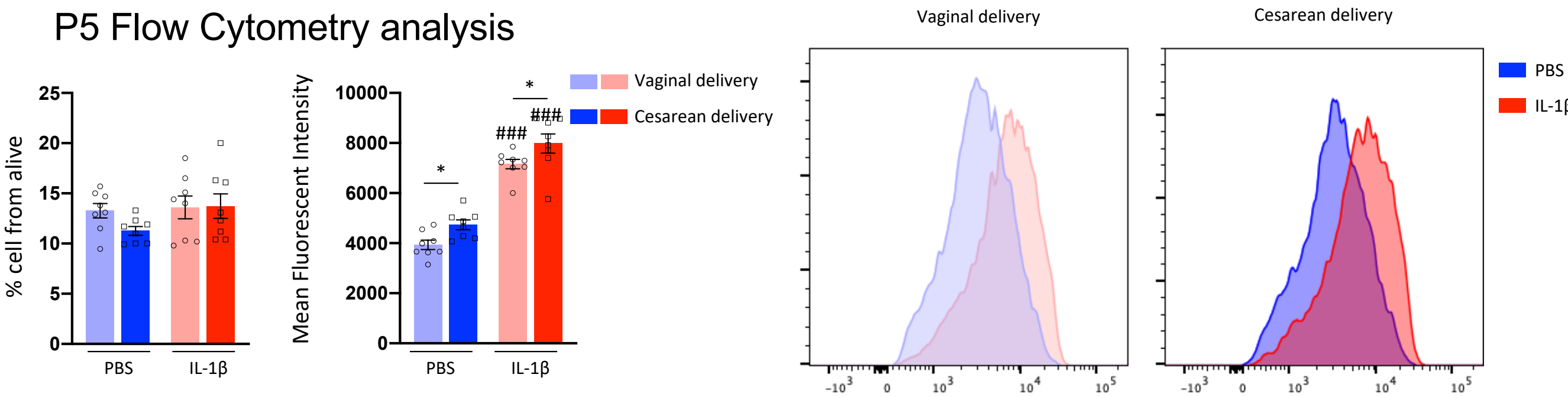
### Gut Microbiota is altered by C-sections and worsen by perinatal inflammation



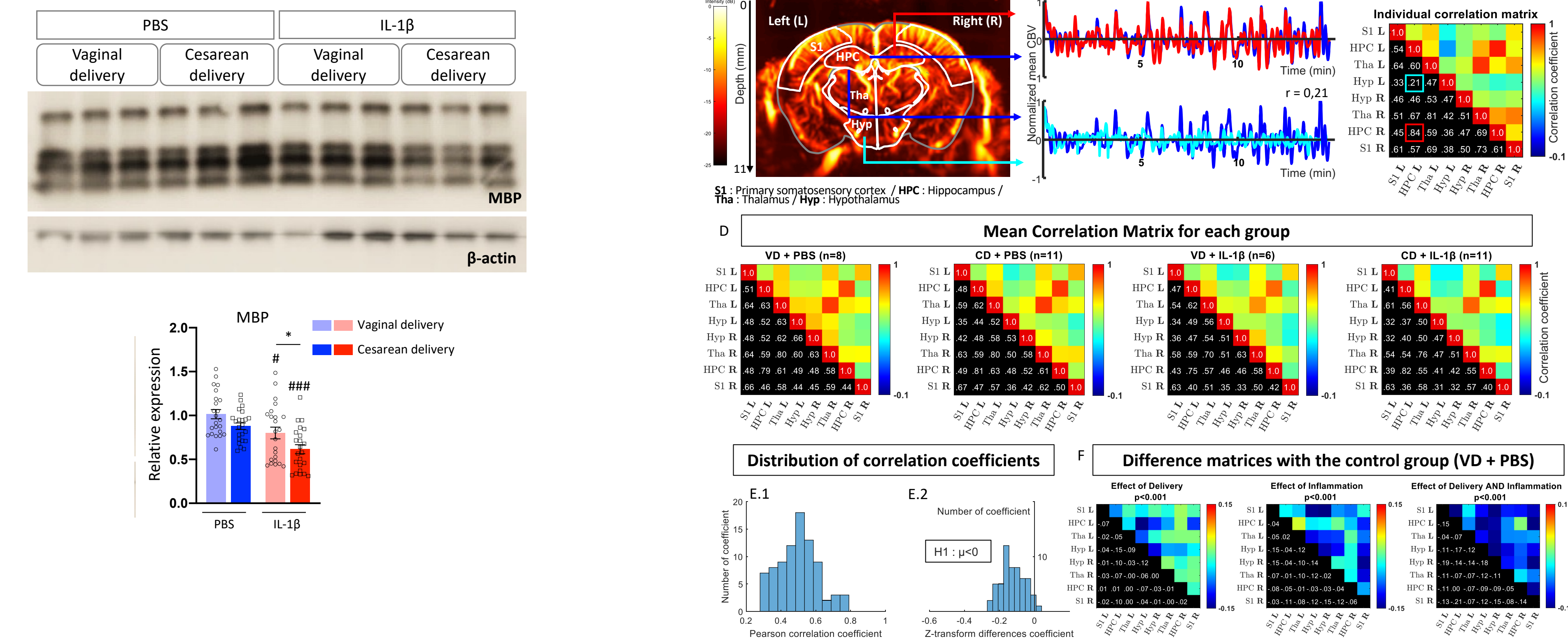
### Peptidoglycan levels are impaired



### C-section worsens microglial reactivity induced by perinatal inflammation



### C-section worsens hypomyelination induced by perinatal inflammation, leading to brain connectivity defects



Consistent with literature data, exposure to RU-486 (crossing the placenta) prevented microglial reactivity associated with exposure to IL-1beta. On the other hand, this is not enough to prevent hypomyelination that occurs later. Thus, early birth alone did not exacerbate the effects of inflammation. We were able to demonstrate a reduction in microbiota diversity in a C-section mouse model, which was exacerbated when the offspring were exposed to IL-1beta. This reduction was accompanied by a more pronounced neuroinflammation phenomenon mediated by microglia. The long-term consequence of the combined effects of C-section and inflammation is more pronounced PWMI, leading to deficits in functional brain connectivity associated with NDD-like behaviors.