



**HAL**  
open science

## Seasonal dynamics of the wild rodent faecal virome

Jayna Raghwani, Christina L. Faust, Sarah François, Dung Nguyen, Kirsty Marsh, Aura Raulo, Sarah C. Hill, Kris V. Parag, Peter Simmonds, Sarah C. L. Knowles, et al.

► **To cite this version:**

Jayna Raghwani, Christina L. Faust, Sarah François, Dung Nguyen, Kirsty Marsh, et al.. Seasonal dynamics of the wild rodent faecal virome. *Molecular Ecology*, 2022, 32 (17), pp.4763-4776. 10.1111/mec.16778 . hal-04338469

**HAL Id: hal-04338469**

**<https://hal.inrae.fr/hal-04338469>**

Submitted on 12 Dec 2023



**HAL** is a multi-disciplinary open access archive for the deposit and dissemination of scientific research documents, whether they are published or not. The documents may come from teaching and research institutions in France or abroad, or from public or private research centers.

L'archive ouverte pluridisciplinaire **HAL**, est destinée au dépôt et à la diffusion de documents scientifiques de niveau recherche, publiés ou non, émanant des établissements d'enseignement et de recherche français ou étrangers, des laboratoires publics ou privés.



Distributed under a Creative Commons Attribution 4.0 International License

# Seasonal dynamics of the wild rodent faecal virome

Jayna Raghwani<sup>1,2</sup>  | Christina L. Faust<sup>3</sup>  | Sarah François<sup>1</sup> | Dung Nguyen<sup>4</sup> |  
 Kirsty Marsh<sup>5</sup> | Aura Raulo<sup>1,6</sup> | Sarah C. Hill<sup>2</sup> | Kris V. Parag<sup>7</sup> | Peter Simmonds<sup>4</sup> |  
 Sarah C. L. Knowles<sup>1</sup> | Oliver G. Pybus<sup>1,2</sup>

<sup>1</sup>Department of Biology, University of Oxford, Oxford, UK

<sup>2</sup>Department of Pathobiology and Population Sciences, The Royal Veterinary College, London, UK

<sup>3</sup>Institute of Biodiversity, Animal Health, and Comparative Medicine, University of Glasgow, Glasgow, UK

<sup>4</sup>Nuffield Department of Medicine, University of Oxford, Oxford, UK

<sup>5</sup>School of Biosciences, University of Exeter, Exeter, UK

<sup>6</sup>University of Turku, Turku, Finland

<sup>7</sup>MRC Outbreak Centre, Imperial College, London, UK

## Correspondence

Jayna Raghwani, Department of Biology, University of Oxford, Oxford, UK.  
 Email: [jayna.raghwani@biology.ox.ac.uk](mailto:jayna.raghwani@biology.ox.ac.uk)

## Funding information

Biotechnology and Biological Sciences Research Council, Grant/Award Number: BB/T008806/1.s.; British Ecological Society, Grant/Award Number: SR18/1519; H2020 European Research Council, Grant/Award Number: MUSMICRO and 851550; Natural Environment Research Council, Grant/Award Number: NE/L011867/1 and NE/V014730/1; Wellcome Trust, Grant/Award Number: 220414/Z/20/Z

**Handling Editor:** Nick Fountain-Jones

## Abstract

Viral discovery studies in wild animals often rely on cross-sectional surveys at a single time point. As a result, our understanding of the temporal stability of wild animal viromes remains poorly resolved. While studies of single host–virus systems indicate that host and environmental factors influence seasonal virus transmission dynamics, comparable insights for whole viral communities in multiple hosts are lacking. Utilizing noninvasive faecal samples from a long-term wild rodent study, we characterized viral communities of three common European rodent species (*Apodemus sylvaticus*, *A. flavicollis* and *Myodes glareolus*) living in temperate woodland over a single year. Our findings indicate that a substantial fraction of the rodent virome is seasonally transient and associated with vertebrate or bacteria hosts. Further analyses of one of the most common virus families, Picornaviridae, show pronounced temporal changes in viral richness and evenness, which were associated with concurrent and up to ~3-month lags in host density, ambient temperature, rainfall and humidity, suggesting complex feedbacks from the host and environmental factors on virus transmission and shedding in seasonal habitats. Overall, this study emphasizes the importance of understanding the seasonal dynamics of wild animal viromes in order to better predict and mitigate zoonotic risks.

## KEYWORDS

community ecology, metagenomics, picornaviridae, rodents, seasonality, virome, wildlife disease

This is an open access article under the terms of the [Creative Commons Attribution](https://creativecommons.org/licenses/by/4.0/) License, which permits use, distribution and reproduction in any medium, provided the original work is properly cited.

© 2022 The Authors. *Molecular Ecology* published by John Wiley & Sons Ltd.

## 1 | INTRODUCTION

Our knowledge of the global virosphere has rapidly expanded (Li, Shi, et al., 2015; Roux et al., 2016; Shi et al., 2018; Zhang et al., 2018), mainly due to decreasing costs and increasing efficiency of high-throughput sequencing. However, while it is now relatively straightforward to genetically characterize host viromes and discover new virus sequences, most studies provide only a glimpse of the circulating virus diversity due to infrequent, nonsystematic and spatially limited sampling of target species. As a result, it is unclear why some viruses are found in some species or populations at specific time points but not in others (Harvey & Holmes, 2022).

While viral discovery studies provide valuable data for understanding the evolutionary history and host range of viruses, they offer limited insights into what factors shape wild animal viromes. In order to understand viral dynamics in wild populations, we need to move from descriptive host-virus associations to a mechanistic understanding of where and when viruses are transmitted and how entire viral communities (viromes) are shaped by the environment and local host communities (Bergner et al., 2019; Fearon & Tibbetts, 2021). For example, both decreases and increases in the number of parasites (i.e., richness) in wild animals have been associated with habitat loss and fragmentation (Mborah & McPeck, 2009; Morand et al., 2019), indicating that anthropogenically mediated changes in host species composition and population densities can directly impact parasite community compositions. Furthermore, the influence of anthropogenic land-use change on virus community compositions has also been observed for a broad range of taxa, suggesting it is a key determinant of host viromes (Campbell et al., 2020; Hermanns et al., 2021; Myer & Johnston, 2019; Susi & Laine, 2021). These findings further highlight why studying community traits, such as parasite richness, is critical for understanding and forecasting zoonotic risk over time and space.

Current knowledge about what factors shape viral communities in animals comes from a small but growing number of studies. A comparison of viromes from three parasitic wasp species reared in laboratory conditions suggests that host phylogeny influences viral community structure (Leigh et al., 2018). However, it is unclear whether viromes in wild animals are also commonly predicted by host evolutionary history. Indeed, a study of multiple wild waterbird species sharing habitats found discordance between the host phylogeny and virome composition (Wille et al., 2019). This finding suggests that interspecific interactions and transmission among waterbirds might break down the host phylogenetic structuring of viral communities in wild settings. However, as investigations into virus community dynamics in multihost systems are limited, it remains uncertain how viral communities vary across host and viral taxa or ecological contexts. Virome composition can differ within species due to demographic and environmental characteristics. For instance, a survey of 24 vampire bat colonies found that virus richness was positively associated with younger age structure, lower elevation and increasing anthropogenic influence (Bergner et al., 2019). Studies on waterbirds also similarly found higher viral richness in younger age groups

(Hill et al., 2022; Wille et al., 2021), suggesting age structure is a critical determinant of virus diversity in wild animals.

Although evidence suggests that environmental and host factors influence viral communities in wild animals, these surveys have predominantly been cross-sectional, with any given population sampled at a single time point. As a result, we have a sparse understanding of temporal dynamics in wild animal viromes. Fundamental questions such as how viral diversity varies over time and what proportion of viruses are only detected intermittently or at certain times of year in seasonal environments remain unaddressed. These dynamic environments affect wild animals through seasonally varying birth and death rates and timing of specific behaviours, including mating and other social interactions. As a result, many factors affecting viral transmission vary seasonally (Altizer et al., 2006), such as recruitment of susceptible individuals, population density and contact rates. Furthermore, virus survival in the environment can fluctuate throughout the year and influence onward spread. For instance, the environmental persistence of avian influenza viruses is higher at lower temperatures (Brown et al., 2007).

Consequently, it is not surprising that zoonotic virus surveillance studies in reservoir populations have consistently observed seasonal variation in virus prevalence in several host species, such as rodents, bats, birds and raccoons (Amman et al., 2012; Fichet-Calvet et al., 2007; George et al., 2011; Hirsch et al., 2016; Páez et al., 2017). However, except for a handful of studies focusing on specific virus families, for example, paramyxoviruses in bats and influenza viruses in mallard ducks (Latorre-Margalef et al., 2014; Wille et al., 2018), investigations into temporal variation in virus diversity in wild animals are rare, leaving a significant gap in our knowledge about viral community dynamics in changeable environments. For example, we may expect increases in viral richness during an animal's breeding season, driven by higher (primarily intraspecific) contact rates. Alternatively, viral community richness or composition may respond to seasonal changes in climate, for instance if ambient conditions affect viral persistence in the external environment (Brown et al., 2007; Sobsey et al., 1988), which could impact viral richness and abundance.

Rodents are a significant zoonotic reservoir globally, and Europe has been identified as a hotspot for rodent reservoir diversity (Han et al., 2015). Furthermore, viral metagenomic surveys confirm that wild rodents carry a high and diverse viral burden, which includes several viruses closely related to human pathogens (Drexler et al., 2012, 2013; Firth et al., 2014; Kapoor et al., 2013; Phan et al., 2011; Williams et al., 2018; Wu et al., 2018), including coronaviruses (Wang et al., 2020). Therefore, understanding the composition and dynamics of rodent viromes is an important goal that can help shed light on when and where these host communities may pose the greatest risk of zoonotic spillover to humans. However, our understanding of virus diversity in rodents and what shapes variation in rodent viromes within and among sympatric species remains limited.

To address these questions, we utilized a long-term capture-mark-recapture study of several sympatric rodent species in Wytham woods, Oxfordshire, UK. Specifically, we characterized

the viromes of three common resident species, *Apodemus sylvaticus* (wood mouse), *Apodemus flavicollis* (yellow-necked mouse) and *Myodes glareolus* (bank vole). These three species are ubiquitous across Europe, particularly in woodland habitats. They have fast-paced life histories, with females capable of producing multiple litters in her lifespan, which is typically less than 1 year. To characterize seasonal variation in viral communities, we generated metaviromic data from pooled faecal samples collected longitudinally from each species over a single year. By combining local microclimate and demographic data from the same period, we explored key factors that predict seasonal variation in the wild rodent virome.

## 2 | METHODS

### 2.1 | Study population

Wild rodents were trapped and sampled over a 1-year period (January 2017–January 2018) in Wytham Woods (51°46' N, 1°20' W), a 385-ha mixed deciduous woodland near Oxford, UK. Three common rodent species are regularly caught at this site: two species of *Apodemus* mice (*Apodemus sylvaticus* and *A. flavicollis*, with *A. sylvaticus* more abundant) and the bank vole (*Myodes glareolus*). These are nongroup-living, omnivorous woodland rodents with overlapping home ranges that show seasonal variation in reproduction, mortality, diet (Watts, 1968) and social interactions (Raulo et al., 2021). One night of trapping on a single ~2.4-ha trapping grid was carried out approximately fortnightly year-round. Small Sherman traps (baited with six peanuts, a slice of apple and sterile cotton wool for bedding material) were set at dusk and collected at dawn the following day. Newly captured individuals were PIT-tagged for unique identification. Faecal samples were collected from the bedding material with sterilized tweezers and frozen at –80°C within 10 h of trap collection. Traps that showed any sign of animal contact (traps that held captured animals and trigger failures where an animal has interfered with the trap but not been captured) were washed thoroughly with bleach between trapping sessions to prevent cross-contamination. All live-trapping work was conducted with institutional ethical approval and under Home Office licence PPL-I4C48848E.

### 2.2 | Sample selection and processing

We randomly selected 133 individual faecal samples (57 *A. sylvaticus*, 25 *A. flavicollis*, 51 *M. glareolus*). Five sampling intervals were defined, which took into account the breeding cycle of the three rodent species: (i) Jan–Feb 2017, (ii) Mar–Apr 2017, (iii) May–Jul 2017, (iv) Aug–Oct 2017 and (v) Nov–Jan 2017/18. Faecal samples were pooled by species and sampling interval, using equal aliquots of 40 mg faeces per individual per pool. For the last sampling interval, where there were fewer individuals of *A. flavicollis* and *M. glareolus* available (two and seven, respectively), greater masses of faeces per individual (150 and 70 mg, respectively) were used for pooling to

ensure sufficient material for sequencing. Complete sample information for each pooled sample is outlined in Table S1.

The samples were processed as follows to enrich for RNA within encapsulated viruses: (i) frozen archived faecal samples were first pooled, then suspended in DNA/RNA Shield Stabilization Buffer (Zymo), vortexed thoroughly, and the supernatant was filtered through a 0.45-µm pore filter; (ii) RNase treatment (RNase One) to remove nonencapsulated RNA from the sample; (iii) RNA extraction using Zymo Quick Viral RNA and RNA Clean and Concentrator 5 kits; (iv) DNA digestion following RNA extraction; (v) ribosomal depletion with an Illumina Ribo-Zero Plus kit, which allows for ribosomal RNA removal in human, mouse rat, and bacterial samples, during sequencing library preparation. The Oxford Genomics Centre carried out sequencing library preparation, which included cDNA synthesis and sequencing on an Illumina NovaSeq 6000 platform.

### 2.3 | Viral genome reconstruction

A total of 355,917,017 pair-end reads of 150 bp were obtained after sequencing. Illumina adaptors were removed, and reads were filtered for quality scores  $\geq 30$  and read length  $> 45$  bp using CUTADAPT 1.18 (Martin, 2011). A total of 352,872,111 cleaned paired-end reads were de novo assembled into 435,021 contigs by MEGAHIT 1.2.8 with default parameters (Li, Liu, et al., 2015). Viral contigs were identified by comparing the assembled contigs against the NCBI RefSeq viral database using DIAMOND 0.9.22 with an e-value cutoff of  $< 10^{-5}$  (Buchfink et al., 2014). To eliminate false positives, all contigs that matched virus sequences were used as queries to perform reciprocal searches on NCBI nonredundant protein sequence database with an e-value cutoff of  $< 10^{-5}$  (Altschul et al., 1990). We considered each viral contig as a viral operational taxonomic unit (vOTU). The abundance of each vOTU contig was assessed by iterative mapping reads against each contig using BOWTIE2 2.3.4.3 (Langmead, 2010) and BBMAP 35.34 (Bushnell, 2014). For viral contigs corresponding to complete or nearly complete contigs, we examined open reading frames (ORFs) using ORF FINDER (parameters: minimum ORF size of 300 bp, standard genetic code, and assuming there are start and stop codons outside sequences) in GENEIOUS PRIME 2019.1.1 (Kearse et al., 2012) to exclude misassembled genomes. Information on the number of raw, cleaned and viral sequence reads per pooled sample is outlined in Table S2. Output data (BLAST results, viral contigs, read abundance) from the bioinformatic analyses can be found on DRYAD: <https://doi.org/10.5061/dryad.612jm645s>

### 2.4 | Virus abundance and diversity metrics

After the assignment of contigs to vOTUs, we normalized the abundance of contigs to the total reads and individuals used in a pool. To reduce the impact of contamination in our analyses, we excluded viral contigs with less than one read per 10 million. The abundance of viruses was then compared using normalized read abundance. Virus

diversity was assessed using the number of virus genera (hereafter “richness”) and the evenness of virus genera (hereafter “evenness”), which was measured by calculating the Shannon entropy of virus genera in the community using the Shannon diversity index function in the R library *vegan*. Consequently, viral evenness ranges from 0 and 1, and indicates the degree to which the virus community is dominated by a particular genus (i.e., evenness = 0) or whether different genera are equally abundant (i.e., evenness = 1). To identify unique and shared viruses across all time points, we visualized the distribution of viral contigs (200 bp or longer) with a minimum of 20 reads among host species with Venn diagrams (Yan, 2021). To determine if our methods were capturing the majority of virus genera in the system, we used rarefaction curves to assess the saturation of virus richness. We then calculated additive partitioning diversity to quantify how virus richness varied between species and time points (Oksanen et al., 2020). Finally, to assess how virus composition changes over time and which virus genera shift through time, we undertook a hierarchical PERMANOVA (Anderson, 2001), with sampling intervals and host species as covariates and constraining permutations to within species only. Together, these analyses inform how sufficient these sampling efforts are for understanding wild animal viromes.

To reconstruct the picornavirus phylogeny, we assembled a multiple protein sequence alignment of 93 whole picornavirus genome sequences from the NCBI RefSeq viral database and eight picornavirus genome sequences identified in this study. A maximum-likelihood phylogeny was inferred with IQ-TREE version 2.1.3 (Minh et al., 2020) using the best substitutional model identified by MOD-ELFINDER (Kalyanamoorthy et al., 2017).

## 2.5 | Predictors of picornavirus richness and evenness

We evaluated drivers of two outcome variables—picornavirus richness and evenness—using Gaussian distributed generalized linear models (GLMs). We modelled picornaviruses in wood mice and bank voles separately and only modelled these virus–host combinations as up to six picornaviruses were found, and these hosts were sampled for viruses at each interval throughout the year. Four predictor variables with time series covering the preceding relevant seasons (June 2016–Dec 2016) and picornavirus characterization period (Jan 2017–Dec 2017) were used to identify significant environmental and population factors affecting picornavirus richness and evenness. Temperature, humidity and rain data were collected hourly at two microclimate stations within the woodlands. Host population density for each species was measured by the minimum number of known alive per hectare based on bimonthly trapping events across a 2.4-ha grid between November 2016 and January 2018. Since predictor and outcome variables were calculated at different frequencies (daily to seasonally), we used locally estimated scatterplot smoothing (LOESS) and generalized additive models (GAMs; Wood, 2011) to model a continuous estimate of each variable over

the study period (June 2016 to Jan 2018 for predictor variables; Jan 2017 to Jan 2018 for outcome variables). Bimonthly estimates for picornavirus richness, picornavirus evenness (see Section 2.4), and host population density were inferred with LOESS, while bimonthly estimates for microclimate data (temperature, humidity and rain) were inferred with GAMs.

Environmental and host density impacts may have delayed effects on observed picornavirus richness and evenness. Therefore, we first identified the appropriate time lags (if any) for each predictor variable. Significant relationships between picornavirus (i) richness and (ii) evenness and the four predictors were identified for each diversity metric and host species using cross-correlation analysis. Cross-correlation analysis (*ccf* function in R) compares two time series and identifies similarities between the variables. Values range from  $-1.0$  to  $1.0$ ; the closer the absolute value is to  $1.0$ , the more linked the two variables are across time. In addition to identifying contemporaneous correlation, cross-correlation can be used to evaluate if there are lagged correlations (i.e., delayed but significant similarities between time series). We evaluated lags from 0 to 14 weeks in 2-week increments and identified significant residual autocorrelation values for each increment. If multiple lags were identified as significant for a given predictor variable, we selected the lag with the highest significant residual autocorrelation value (see Table S3) to use in GLM construction below. The maximum lag was set at 14 weeks to reflect the average lifespan of the wild rodents in the study (approximately 3 months).

We considered four separate GLMs per host species and diversity metric (i.e., AS vs. viral evenness, MG vs. viral evenness, AS vs. viral richness and MG vs. viral richness) to evaluate drivers of picornavirus diversity. However, prior to undertaking a GLM analysis, correlations among the four variables (with or without lags as determined by the cross-correlation analysis; Table S9) for each metric and host species were visually assessed in each GLM in R using the library “*corrplot*” (Wei & Simko, 2021). If the correlation coefficient was  $\geq 0.7$  (Figure S1), we reduced the sets of GLMs considered accordingly (Table S3). We used the library “*AICmodvg*” (Mazerolle, 2020) for model selection, which considers the Akaike Information Criterion (AIC) and the number of parameters to determine the best fit model. Lastly, the GLM results were plotted using the library “*jtools*” (Long, 2020). Statistical analyses and most plots were undertaken in R version 4.1.1 (The R Core Team, 2021). Adobe ILLUSTRATOR 2021 was also used to visualize the abundance of common vertebrate-associated and bacteriophage viruses over time.

## 3 | RESULTS

### 3.1 | Virome dynamics in wild rodents

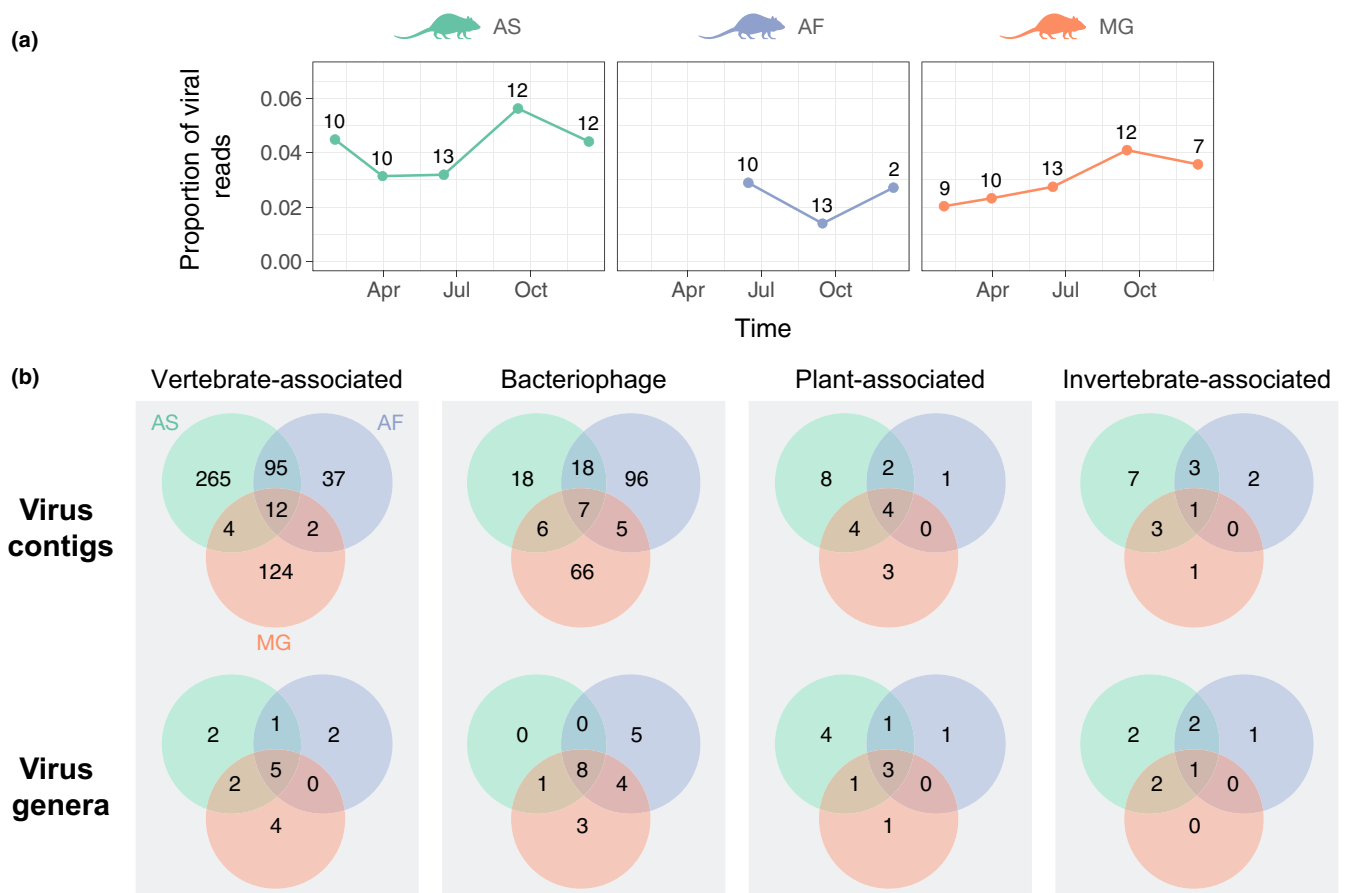
Over a 1-year period (January 2017–January 2018), we characterized viruses in faeces from a total of 133 individual rodents (57 *Apodemus sylvaticus*, 25 *A. flavicollis* and 51 *Myodes glareolus*). For each of the five 2–3-month sampling intervals, we randomly selected up to

13 individual samples per species to create species- and sampling interval-specific pools for metagenomic sequencing (see Methods, Table S1 for further details). This approach resulted in five pools for both *A. sylvaticus* (wood mouse) and *M. glareolus* (bank vole) and three pools for *A. flavicollis* (yellow-necked mouse) which are less abundant at the sampling site.

Of the total quality-filtered and trimmed reads, 3.20% (~22.7 million [M]/711.8 M) were taxonomically assigned to known viruses (see Methods). Figure 1 provides an overview of the viruses detected across all rodent species (hereafter, “Wytham rodents”). Clean virus abundance ranged from 1.06M to 2.88M reads per pooled sample (Table S2), with median abundances of 2.27M, 1.40M and 1.22M for wood mice, yellow-necked mice and bank voles, respectively, with the proportion of viral reads (number of viral reads/total number of sequenced reads) varying somewhat among species and throughout the year (Figure 1a). Although the number of individuals per pooled sample varied between two and 13, this was not significantly correlated with the number of virus genera (i.e., viral richness) in each pooled sample (Pearson correlation = .2596;  $p = .39$ ). Rarefaction

curves further suggest that viral richness is approaching saturation in the Wytham rodents (Figure S2), indicating that additional sampling is unlikely to reveal many more viral genera.

The majority of virus contigs are associated with virus families that infect vertebrates or bacteria (Figure 1b). This observation is somewhat unexpected as the viral enrichment protocol used in this study was optimized for characterizing viral RNA in encapsulated viruses (see Methods), regardless of their host association. Specifically, the number of bacteriophage contigs is notable (Figure 1b) since most bacteriophages have double- (ds) or single-stranded (ss) DNA genomes, although our protocols should also detect DNA viruses undergoing active replication or transcription. Alternatively, bacteriophages could be preferentially enriched in shotgun metagenomic data sets due to their large genome sizes (>100kb) (Dion et al., 2020). While this might be a contributing factor, the most abundant bacteriophage virus families in the Wytham rodent virome were Leviviridae (+ssRNA) and Microviridae (ssDNA), which have genome sizes ranging from 4 to 6.5 kb (Table S4).



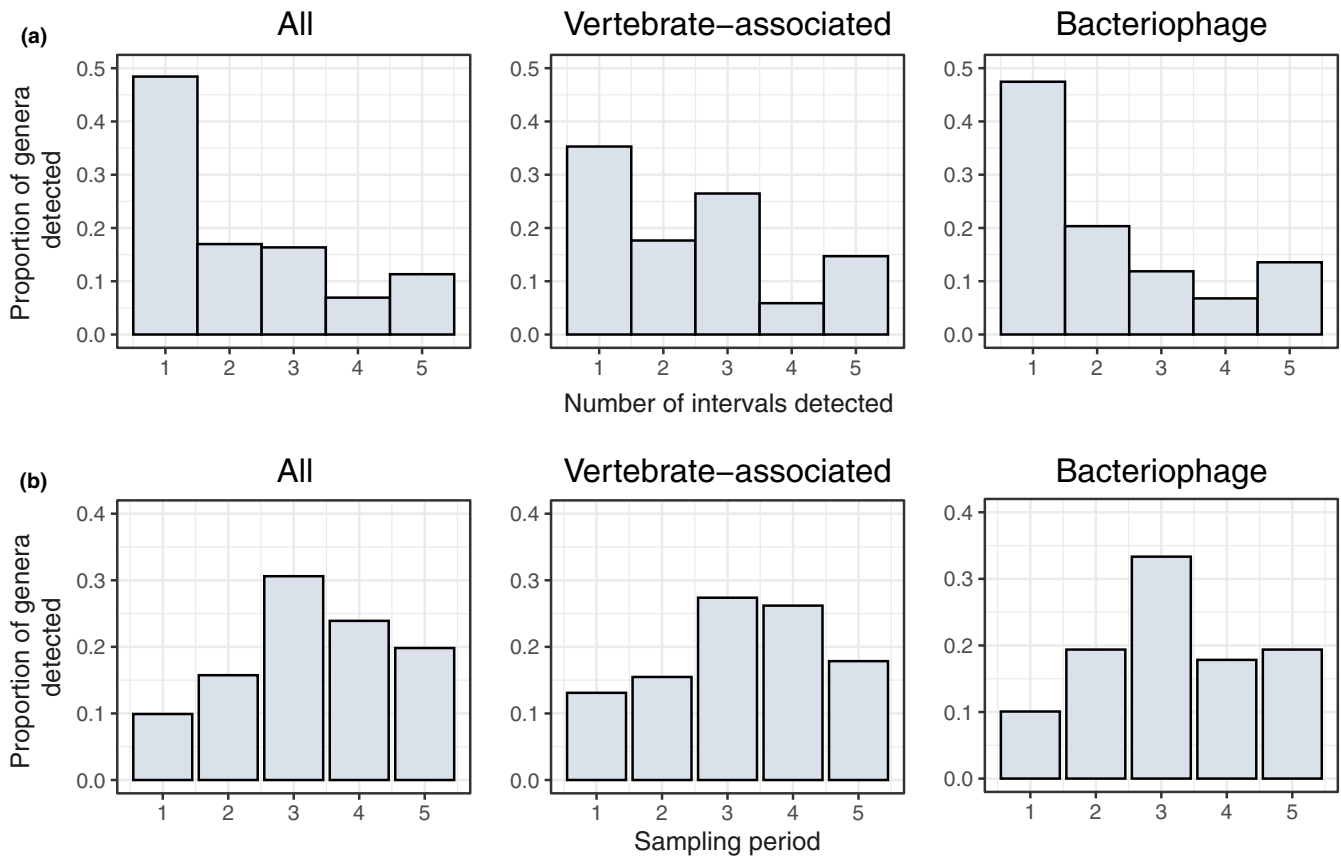
**FIGURE 1** Summary of viral reads detected in the wild rodent faecal virome in Wytham woods over a single year. (a) Proportion of viral reads detected through time for the three host species (AS = wood mouse, AF = yellow-neck mouse, MG = bank vole). Proportion is based on the number of reads per sequencing library (i.e., read depth). Numbers above each point indicate the number of individuals included in each pooled sample. Time points correspond to the midpoint of the sampling interval (see main text). (b) Distribution of viral contigs and genera across four main host groups (based on a minimum contig size of 200 nucleotides, applying a minimum threshold abundance of one read per 10 million in each pooled sample, and restricting to contigs with at least 20 reads). Green, blue and orange correspond to AS, AF and MG, respectively.



While a substantial proportion of contigs were host species-specific (wood mice = 265/852 [31.1%], yellow-necked mice = 144/852 [16.9%], bank voles = 223/852 [26.2%]), most vertebrate-associated viral contigs were detected in at least two host species (Figure 1b). Furthermore, a larger proportion of viral contigs (18.1%; 154/852) were shared between the two closely related mouse species (wood mouse and yellow-necked mouse) than between mice and voles (7.2%; 107/852).

To understand how virus detection varies across the year, we quantified the proportion of viral genera detected across all three hosts by the number of times it was detected (Figure 2a) and in each sampling interval (Figure 2b). Overall, 65.4% (104/159) of viruses were only observed in one or two intervals. A similar trend was noted for both vertebrate-associated viruses (18/34 = 52.9%) and bacteriophage (40/59 = 67.8%), indicating that most viruses in wild rodents are observed intermittently. The proportion of detected viruses varied seasonally, with the highest percentage observed in the third sampling period (Figure 2b), which corresponds to spring/summer months when host population density is low (Figure S3). Furthermore, most viruses (255/343 = 74.3%) were detected between the third and last sampling periods (i.e., the spring/summer and autumn/winter months; Figure 2b).

The relative abundance of viruses (Figure 2) is affected by changes in both virus occurrence between individuals and abundance within individuals. Sample pooling does not allow us to disentangle these; therefore, it is likely that viruses at low prevalence across the population or low virus abundance within individuals are not detected. However, we can still determine how much variation in viral richness (genera level) was observed at different levels—within a (pooled) sample, between species and between sampling periods (Table 1)—with additive diversity partitioning (Crist et al., 2003). When considering viromes of all three host species together, around a third of virus richness (28.5%) was observed within pooled samples, 18.5% was observed between pooled samples within a given sampling period (i.e., among species, Table 1), while over half of all virus richness (53%) arose between sampling periods. In both wood mice and bank voles, approximately equal proportions of viral richness occurred within samples (45%–47%) and between sampling periods (53%–55%). However, in yellow-necked mice, the proportion of virus richness across sampling periods was lower (42.6%) than in the other host species (Table 1). This difference probably reflects sampling bias, particularly as faecal samples from yellow-necked mice were only available for three of the five sampling periods. Nevertheless, these findings suggest a significant change in virus richness through



**FIGURE 2** Variation in virus detection across the year. (a) Histogram showing the proportion of viral genera by the number of times they were detected across the five sampling intervals for all viruses, vertebrate-associated viruses and bacteriophages. (b) Histogram summarizing the proportion of viral genera detected in each sampling period (1 = Jan–Feb 2017, 2 = Mar–Apr 2017, 3 = May–Jul 2017, 4 = Aug–Oct 2017, 5 = Nov–Jan 2017/18) for all viruses, vertebrate-associated viruses and bacteriophage.

TABLE 1 Hierarchical partitioning of total virus richness

Host group	Mean virus richness (genera)	Level	Percentage
All	25.1	Within sample	28.5
	16.3	Between species	18.5
	46.6	Between sampling periods	53.0
	88	Total	100
<i>Apodemus sylvaticus</i>	21.6	Within sample	47.0
	24.4	Between sampling periods	53.0
	46	Total	100
<i>Apodemus flavicollis</i>	28.7	Within sample	57.4
	21.3	Between sampling periods	42.6
	50	Total	100
<i>Myodes glareolus</i>	26.4	Within sample	45.5
	31.6	Between sampling periods	54.5
	58	Total	100

time in Wytham rodents and that the structure of viral communities is highly transient.

To understand how the viral community composition differs between host species and sampling intervals, we undertook a hierarchical PERMANOVA (Anderson, 2001). Overall, we found that the virus community composition shifts significantly over time ( $p < .007$ ), with host species having a weaker effect ( $p < .043$ ) (Table S5). However, sampling interval and host species were not significant when considering vertebrate-associated or bacteriophage viruses separately (Table S5). We also identified the main virus genera that shift between sampling intervals (Figure S4), which included *Eucampyvirinae* (family: Myoviridae—bacteriophage), *unclassified Picobirnaviridae* (family: Picobirnaviridae—vertebrate-associated), *Mamastrovirus* (family: Astroviridae—vertebrate-associated), *Cardiovirus* (family: Picornavirus—vertebrate-associated), *unclassified Dicistroviridae* (family: Dicistroviridae—vertebrate-associated).

### 3.2 | Extensive circulating virus diversity

Closer examination of the temporal patterns of the vertebrate-associated and bacteriophage viruses confirmed that considerable virus diversity was detected in the Wytham rodents, corresponding to different virus families, genera and genome architectures (i.e., single- or double-stranded, DNA or RNA genomes) displaying highly variable patterns of seasonal detection (Figure 3; Table S6). In Figure 3, a solid-filled box indicates that at least 20 reads were detected for a virus genus in a particular host, a lighter-shaded box indicates fewer than 20 reads were detected and white boxes indicate no reads were detected. The most abundant viruses belong to the virus families Picobirnaviridae (vertebrate-associated) and Leviviridae (bacteriophage), which were detected throughout the year at high read abundance (ranging from 0.66 to 2.32M for Picobirnaviridae and from 0.29 to 1.35M for Leviviridae in pooled samples). Other common vertebrate-associated viruses were

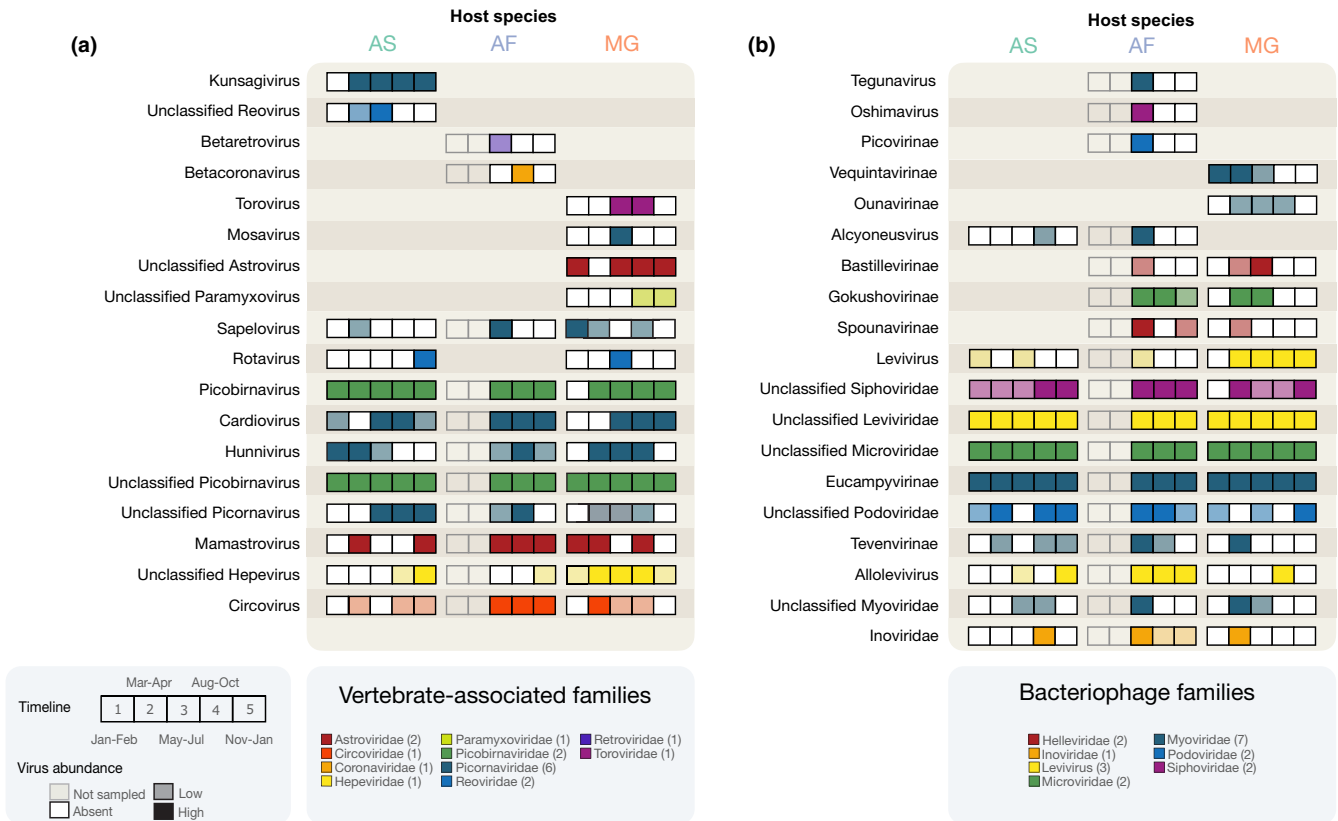
members of several nonenveloped ssRNA virus families, such as Picornaviridae, Astroviridae and Hepeviridae, and the dsRNA virus family Reoviridae. We also detected multiple enveloped RNA and reverse-transcribing viruses (*Betaretrovirus*, *Betacoronavirus*, an unclassified *Paramyxovirus*, and a *Torovirus*) in yellow-necked mice and bank voles.

Apart from picornaviruses, a more resolved taxonomic classification of the most common vertebrate-associated and bacteriophage virus families (e.g., Picobirnaviridae, Leviviridae and Microviridae) was not possible due to poor representation of these taxa in reference databases. As a result, it is challenging to ascertain more detailed information about these viruses. For example, which hosts do the bacteriophage infect and how many distinct virus species (i.e., virus genomes) are present? We aimed to partly address the latter by considering virus contigs similar in length to complete genomes (see Table S7), many of which are likely to represent new viruses. Based on this simple approach, there appear to be potentially 114 putative *Picobirnavirus* genomes (which are bisegmented), 21 putative *Levivirus* genomes and nine putative *Microvirus* genomes (Table S7).

### 3.3 | Seasonal cocirculation of picornaviruses

In Wytham rodents, picornaviruses were the most common and taxonomically well-characterized viruses. Furthermore, as they contain several important pathogens that affect human and animal health (e.g., *Enterovirus* and *Aphovirus*), we undertook a more detailed analysis to understand seasonal variation in picornavirus abundance and diversity. We assembled eight virus contigs for the most prevalent picornaviruses (see Table S8 for further details), representing partial and near-complete genomes. The eight genome sequences correspond to six distinct genera (Figure 4a) and share between 48% and 95% amino acid sequence identity with their closest BLAST hits, which were primarily associated with mammalian hosts, such as bats and other rodent species. The normalized read abundance



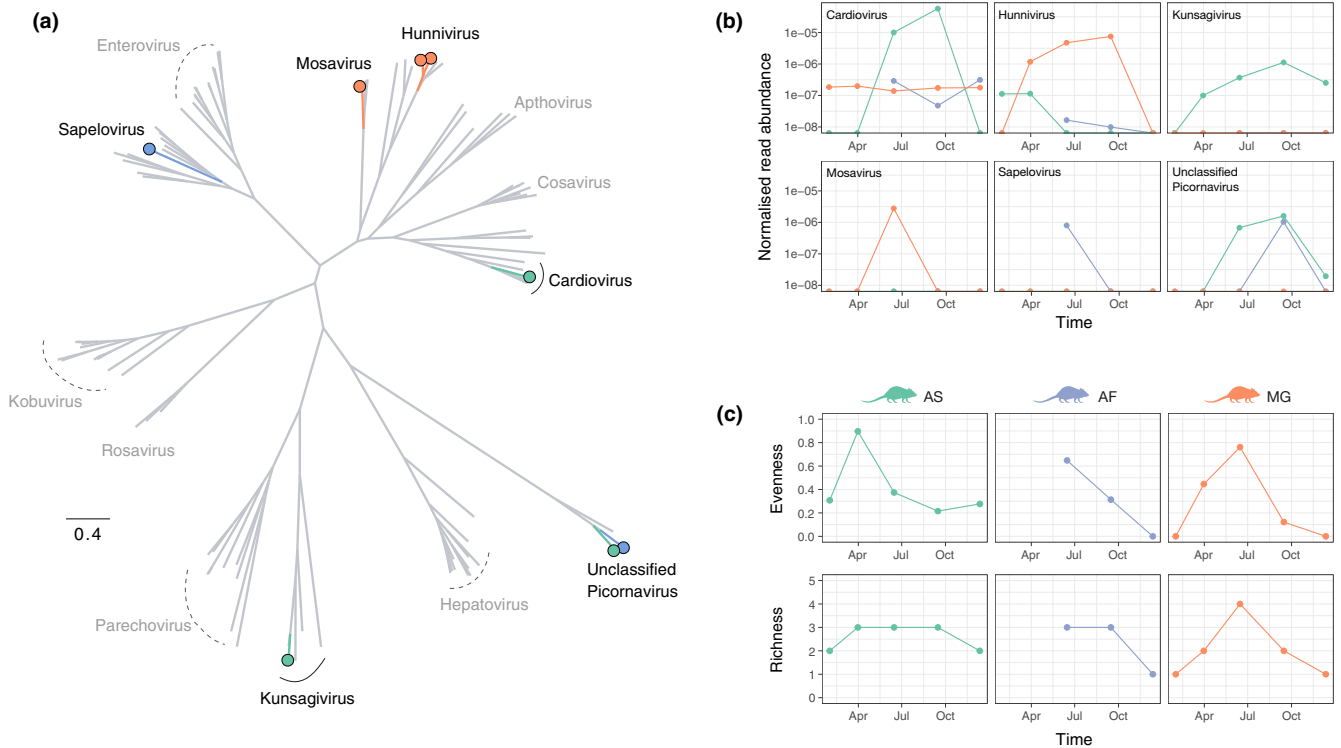


**FIGURE 3** Temporal patterns of vertebrate-associated and bacteriophage virus genera in Wytham rodents. (a) Vertebrate-associated virus genera. (b) Bacteriophage virus genera. Each box within a set of five corresponds to a distinct sampling interval (AF was only sampled at three intervals). White boxes indicate tested time points without the virus genus but that the genus was present in that host species at other time points. Shaded boxes indicate the presence and are coloured by virus family—Solid-filled boxes indicate at least 20 reads (high abundance), while light-shaded boxes indicate fewer than 20 reads (low abundance). AS = wood mouse, AF = yellow-neck mouse, MG = bank vole.

(the number of viral reads divided by the total number of reads [i.e., read depth] per pooled sample and the number of individuals included in the pooled sample) showed strong seasonal variation for all six viruses (Figure 4b). Furthermore, the seasonal patterns of occurrence and peak abundance varied strikingly across these picornaviruses (Figure 4b). For example, *Mosavirus* and *Sapelovirus* were only observed at a single time point and most abundant in early summer (between May and July), while others (e.g., *Hunnivirus* and *Kunsagivirus*) were detected in multiple consecutive periods and reached peak abundance in late summer (between August and October). Importantly, this suggests that even for related viruses, there may be marked variation in the underlying drivers of transmission. Our data also demonstrated that while multiple distinct picornaviruses cocirculate in all three rodent species, for the most part, these viruses are disproportionately associated with a single host species (Figure 4b). In particular, the two distinct genome sequences of the “Unclassified Picornavirus” genus (Figure 4a) were exclusively found in wood mice or yellow-necked mice, but not both, even when these genomes were detected at the same sampling interval (Figure 4b). However, as the yellow-necked mice are less abundant than the other two species, sampling bias and the pooling of samples are likely to affect the observed virus sharing among host species.

Next, we investigated temporal patterns of picornavirus diversity (Figure 4c). Similar to virus abundance, viral evenness and richness exhibited seasonal variation. The trends are broadly consistent among the three rodent species, with the highest picornavirus diversity (evenness and richness) occurring between May and July in early summer. However, viral evenness peaked earlier in wood mice between March and April during the spring months. The pattern is probably driven by the presence of multiple picornaviruses that are at similarly low abundance in the wood mice, resulting in high viral evenness. As the most abundant picornavirus genus, *Cardiovirus*, becomes predominant among the picornaviruses at later time points, it leads to a concurrent decrease in viral evenness as the relative frequencies among co-circulating picornaviruses become unequal. A similar observation is observed in bank voles, where a notable reduction in viral evenness in late summer (August to October) coincides with a peak in *Hunnivirus* abundance.

When restricting the analysis to the eight picornavirus genomes, we observed broadly similar seasonally varying patterns in abundance, richness and evenness at the species level (Figure S5). However, there were notable differences compared with the analysis undertaken at the genera level. In wood mice, a comparable peak



**FIGURE 4** Picornavirus diversity and abundance. (a) Evolutionary relationship of picornavirus assembled genomes identified in Wytham rodent faecal viromes (coloured by their predominant host association) and a subset of known mammalian picornaviruses (in grey). (b) Overall normalized read abundance of six picornavirus genera over time. Read counts per pooled sample below one per 10 million read threshold were excluded. Colours indicate association with host species (green, orange and blue correspond to AS, MG and AF). (c) Diversity of picornaviruses, measured as virus evenness and richness, over time. AS = wood mouse, AF = yellow-neck mouse, MG = bank vole.

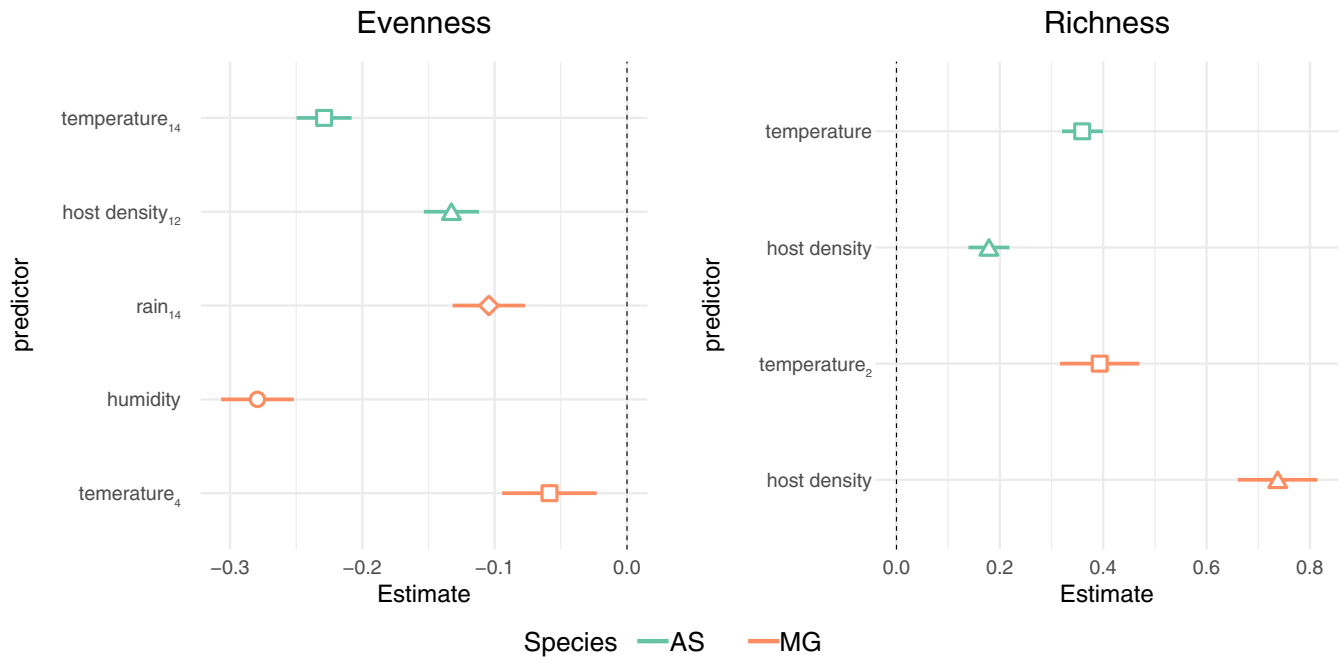
in viral species evenness was absent, and a peak in viral species richness occurred in late summer/early autumn (Figure S5). As the eight genome sequences represent only 11% of contigs included in the genera-level analysis, it is difficult to determine if these patterns in virus species diversity are an accurate reflection of picornavirus dynamics or biased by known viral genomes.

### 3.4 | Drivers of picornavirus diversity

To explore the predictors of picornavirus diversity in Wytham woods, we focused on wood mice and bank voles, which were sampled in each of the five intervals. We evaluated three environmental variables (temperature, humidity and rain) using data collected from June 2016 to January 2017 from two weather stations located within the woodlands, together with approximately fortnightly estimates of host population density, calculated as the minimum number known alive (MNKA) per hectare from trapping data. Time series data on picornavirus diversity and the four variables were reconciled using interpolation techniques (see Methods). Specifically, we used a fortnightly interval to derive estimates of all variables at the resolution available for the host density data (Figures S3 and S6). We undertook a cross-correlation analysis to select the single most informative time lag for each of the four variables (temperature, humidity, rain and host population density), as identified by the highest correlation coefficient (Table S9). The maximum time lag was set as

14 weeks to reflect the expected average lifespan of wood mice and bank voles (~3 months). We found a notable correlation between picornavirus diversity and the ecological conditions experienced by host species in the preceding weeks and months ( $r_{xy} = 0.20\text{--}0.88$ ; Table S9). For viral evenness, time lags in the four variables ranged from 10 to 14 weeks in wood mice and 6 to 14 weeks in bank voles, while for viral richness, time lags ranged from 2 to 14 weeks for both species (Table S9).

We constructed GLMs containing each time-lagged variable as predictors for each host species and diversity metric. Sets of GLMs were reduced accordingly to exclude highly correlated variables (i.e.,  $>0.7$ ; see Table S3, Figure S1). The results indicated that drivers of picornavirus diversity varied by species and diversity metric (Figure 5). For both species, the temperature in the preceding 1–3 months was negatively correlated with viral evenness (Figure 5; Table S10). In wood mice, viral evenness was additionally associated with a lower host population density 3 months previously, suggesting that the peak in viral evenness followed a period of low population density (in late winter) when the population mainly comprises overwintering individuals and when home ranges are largest and overlapping. In bank voles, viral evenness was negatively associated with rainfall in the previous 3 months and concomitant humidity (Figure 5; Table S10). Viral richness was positively associated with concomitant host population density and temperature in both wood mice and bank voles (Figure 5; Table S10).



**FIGURE 5** Predictors of picornavirus diversity. Standardized coefficients from the best fit models (mean-centred and scaled by one standard deviation) are illustrated for each diversity metric and species. Subscripts in variable names indicate time lag in weeks. AS = wood mice, MG = bank voles

Although we found similar predictors associated with viral evenness and richness in both host species, as the same set of predictors was not evaluated in each GLM, interspecific differences should be interpreted with caution. Specifically, the absence of a predictor in our analyses does not necessarily mean it is not associated with viral diversity. Therefore, to better understand the extent of interspecific variation in shaping virus diversity, additional field data will be required to characterize viral communities on finer temporal scales (e.g., fortnightly or monthly).

## 4 | DISCUSSION

We examined the seasonal dynamics of the faecal virome in three wild rodent species widespread in the UK and Europe. Strikingly, we found extensive virus diversity circulating in these rodents throughout the year. Detected viruses were predominantly associated with vertebrate or bacteria hosts and represented a broad range of virus genomic organization (RNA and DNA, single- and double-stranded), and virome diversity and community composition varied markedly throughout the year. Although viruses appear to be largely host-specific at the inferred species level, we saw substantial virus sharing among species, particularly among the wood mice and yellow-necked mice, indicating host phylogenetic relatedness is an important determinant of virus ecology. Furthermore, temporal patterns in virus abundance suggest marked variation in the epidemiology of cocirculating viruses, which can differ within and between species. Lastly, seasonal trends in picornavirus diversity suggest that these viral communities are shaped by biological and ecological

processes, which probably influence within-host viral dynamics, environmental persistence and between-host viral transmission.

Our study corroborates previous findings that rodents harbour a substantial and diverse virus burden in the gastrointestinal tract (Firth et al., 2014; Phan et al., 2011; Williams et al., 2018; Wu et al., 2018) with individuals probably encountering a shifting array of seasonally abundant viruses over their lifetimes (Abolins et al., 2018; Firth et al., 2014), contributing to their highly activated immune state (Abolins et al., 2017). Most vertebrate-associated virus genera identified in the Wytham rodents have been detected previously in wild rodents in the USA and China (Firth et al., 2014; Phan et al., 2011; Williams et al., 2018; Wu et al., 2018). *Cardiovirus* and *Picobirnavirus* have previously been reported in four major untargeted viral metagenomic surveys of wild rodents (Firth et al., 2014; Phan et al., 2011; Williams et al., 2018; Wu et al., 2018), suggesting these viruses are widespread and endemic in rodents. Two virus genera detected here have not previously been reported from wild rodents—*Kunsagivirus* (family Picornaviridae) and *Torovirus* (family Tobnaviridae). Although information about *Kunsagivirus* is limited (currently, only six sequences are available in GenBank), *Torovirus* is an enveloped virus commonly found in mammals, including humans, with gastroenteritis (Horzinek et al., 1987; Jamieson et al., 1998). Furthermore, the lower abundance of enveloped viruses than their nonenveloped counterparts is not surprising given their increased lability in the gastrointestinal tract. While detailed characterization of enveloped viruses in Wytham rodents was limited, contigs of *Paramyxovirus* detected in bank voles in this study closely matched another *Paramyxovirus* (genus *Jeilongvirus*) isolated from bank voles in Slovenia (Vanmechelen et al., 2018).

There was notable variation in observing a specific virus genus in the Wytham rodents across the year. Some viral genera from the most abundant virus families (Picobirnaviridae [vertebrate-associated], Leviviridae [bacteriophage] and Microviridae [bacteriophage]) were observed at all sampling intervals at high levels in all three species, indicating that they (or their bacterial hosts) persist in the population by establishing a chronic infection or environmental persistence which facilitates frequent re-infection. However, a significant fraction of virus diversity (104/159 genera) was detected only in one or two of five seasonal sampling periods. Hierarchical analysis of virus richness suggests there is substantial turnover in viral diversity in the Wytham rodents, with around half of the diversity absent from each sample interval. Although these results suggest that wild rodents may support different virus epidemiological dynamics within a single year, more in-depth investigations will be required to understand the impact of pooling and sampling effort, particularly for viruses with low prevalence or abundance within individuals, which might appear transient despite continuous circulation. Importantly, however, these findings also highlight that cross-sectional surveys will miss a large proportion of circulating virus diversity, even when samples are taken during times of the year when virus diversity is maximal, such as the spring and summer months in this population.

Despite sharing the same seasonal environment, the factors predicting picornavirus diversity differed between wood mice and bank voles. However, these interspecific differences should be interpreted carefully as different combinations of predictors were evaluated for each diversity metric and host species. Concomitant host population density and temperature predicted higher virus richness in both host species, suggesting that higher intraspecific interactions and warmer conditions increase picornavirus transmission (and/or environmental persistence) and lead to a higher number of viral species circulating in the following months. Host density in the previous 2–3 months was associated with lower viral evenness in wood mice—several mechanisms could explain this pattern. For example, a higher population density could facilitate certain viruses to dominate transmission events through smaller home range sizes and reduced frequency of contacts, or the increase in density could affect competition and alter within-host replication dynamics. Future studies that incorporate more samples collected at higher frequencies could be used to test such hypotheses explicitly.

The widespread distribution of wood mice and bank voles in the UK makes them highly amenable for long-term field studies and have been previously utilized to understand natural drivers of virus transmission in wildlife populations (Begon et al., 2009; Carlslake et al., 2006; Knowles et al., 2012; Telfer et al., 2002, 2007). While these studies have focused on specific DNA viruses that are endemic in these species, they also observed heterogeneity in rodent virus epidemiology, including between years, host species, individuals and across different viruses (Begon et al., 2009; Carlslake et al., 2006; Knowles et al., 2012; Telfer et al., 2002, 2007).

We detected long time lags (~3 months) between some environmental variables and picornavirus diversity, particularly for viral evenness. This observation could be because pooled samples were

from a time window when individual samples from 2 to 3 months were aggregated into one “time point.” Although such temporal pooling is not ideal for time series evaluation, it provides a valid first approximation of important seasonal correlates of viromes and an improvement on previous cross-sectional surveys. We expect many viruses to be transmitted between conspecifics through close contact and between species via the environment. However, the ability of viruses to remain transmissible in the environment is highly variable across taxa. For example, hepatitis A virus (genus *Hepatovirus*, family Picornaviridae) is very stable under a broad range of temperature, humidity and pH conditions and can survive over 3 months in the environment (Sobsey et al., 1988). In contrast, other picornaviruses, such as foot and mouth disease virus (genus *Aphthovirus*), appear to be less stable in the environment, with longer survival times observed at higher humidity and moderate temperatures (Abad et al., 1994; Mbithi et al., 1991; Mielke & Garabed, 2020). Although we observed clear seasonality in picornavirus detection and abundance, given the substantial temporal turnover in viral diversity, it is reasonable to assume that other viruses in Wytham rodents also circulated seasonally, especially those detected transiently in the population (e.g., *Coronavirus*, *Paramyxovirus*). In the future, we plan to develop mechanistic transmission models in these systems using field studies with a higher temporal resolution. Mechanistic models could be adapted to other rodent systems to forecast peaks and troughs in epizootics and test potential interventions in settings where zoonotic viruses are a risk to human populations.

Understanding viral community dynamics is key to predicting and mitigating human risk from known and unknown rodent zoonoses. Improvements in sequencing technology that enable the identification and monitoring of RNA viruses longitudinally in wildlife are crucial to establishing the spatial, temporal and environmental factors that determine zoonotic risk. Previous work has shown that specific rodent-borne zoonotic viruses exhibit strong seasonal dynamics in the reservoir population (Fichet-Calvet et al., 2007; Luis et al., 2015; Tian et al., 2017). Nevertheless, by quantifying the virome dynamics, we can identify the co-occurrence of a community of viruses, their transmission across the year, and associations with the environment and host ecology. This step moves our current knowledge about the seasonal dynamics of viral communities and contributes to a more comprehensive understanding of virus transmission ecology in wildlife populations.

#### AUTHOR CONTRIBUTIONS

Conceptualization: Jayna Raghvani; Funding acquisition: Jayna Raghvani; Resources: Sarah C. Hill, Peter Simmonds and Oliver G. Pybus; Investigation: Jayna Raghvani, Christina L. Faust, Sarah François, Dung Nguyen, Kris V. Parag, Kirsty Marsh, Aura Raulo and Sarah C. L. Knowles; Visualization: Jayna Raghvani and Christina L. Faust; Project administration: Jayna Raghvani; Supervision: Jayna Raghvani; Writing—original draft: Jayna Raghvani; Writing—review & editing: Jayna Raghvani, Christina L. Faust, Sarah François, Dung Nguyen, Sarah C. Hill, Kris V. Parag, Kirsty Marsh, Aura Raulo, Peter Simmonds, Sarah C. L. Knowles and Oliver G. Pybus.

## ACKNOWLEDGEMENTS

The viral metagenomics study was supported by the British Ecological Society small research grant (award no. SR18/1519) awarded to JR. In addition, we thank Dr Curt Lamberth, The Wytham Estate, for providing the microclimate data. SF and OGP are supported by BBSRC grant BB/T008806/1.s. CLF was funded by a NERC Fellowship (NE/V014730/1), SCLK by a NERC fellowship (NE/L011867/1) and an ERC Starting Grant (MUSMICRO, Project no. 851550), KM by an RVC studentship, and AR by a Clarendon Scholarship. SCH was supported by the Wellcome Trust [220414/Z/20/Z]. This research was funded in whole, or in part, by the Wellcome Trust [Grant no. 220414/Z/20/Z]. For the purpose of open access, the corresponding author has applied a CC BY public copyright licence to any Author Accepted Manuscript version arising from this submission.

## CONFLICTS OF INTEREST

The authors declare there is no conflict of interest.

## OPEN RESEARCH BADGES



This article has earned an Open Data Badge for making publicly available the digitally-shareable data necessary to reproduce the reported results. The data is available at Dryad, doi:10.5061/dryad.612jm645s, while associated code is available via Github: <https://github.com/jnarag/Wytham-rodent-virome>.

## DATA AVAILABILITY STATEMENT

The raw sequencing data generated in this study have been deposited in the Sequence Read Archive (BioProject ID: PRJNA803204) under accession nos.: SRX14033113-SRX14033125. Assembled picornavirus genomes have been deposited in GenBank under accession nos.: ON136174-ON136181. Data from the bioinformatics pipeline and metadata associated with this research are available on Dryad at doi:10.5061/dryad.612jm645s, while associated code is available via Github: <https://github.com/jnarag/Wytham-rodent-virome>.

## BENEFIT-SHARING STATEMENT

Benefits generated: Benefits from this research accrue from the sharing of our data and results on public databases as described above.

## ORCID

Jayna Raghwanı <https://orcid.org/0000-0001-8538-4995>

Christina L. Faust <https://orcid.org/0000-0002-8824-7424>

## REFERENCES

- Abad, F. X., Pintó, R. M., & Bosch, A. (1994). Survival of enteric viruses on environmental fomites. *Applied and Environmental Microbiology*, 60(10), 3704–3710. <https://doi.org/10.1128/aem.60.10.3704-3710.1994>
- Abolins, S., King, E. C., Lazarou, L., Weldon, L., Hughes, L., Drescher, P., Raynes, J. G., Hafalla, J. C. R., Viney, M. E., & Riley, E. M. (2017). The comparative immunology of wild and laboratory mice, *Mus musculus domesticus*. *Nature Communications*, 8(1), 14811. <https://doi.org/10.1038/ncomms14811>
- Abolins, S., Lazarou, L., Weldon, L., Hughes, L., King, E. C., Drescher, P., Pocock, M. J. O., Hafalla, J. C. R., Riley, E. M., & Viney, M. (2018). The ecology of immune state in a wild mammal, *Mus musculus domesticus*. *PLoS Biology*, 16(4), e2003538. <https://doi.org/10.1371/journal.pbio.2003538>
- Altizer, S., Dobson, A., Hosseini, P., Hudson, P., Pascual, M., & Rohani, P. (2006). Seasonality and the dynamics of infectious diseases: Seasonality and infectious diseases. *Ecology Letters*, 9(4), 467–484. <https://doi.org/10.1111/j.1461-0248.2005.00879.x>
- Altschul, S. F., Gish, W., Miller, W., Myers, E. W., & Lipman, D. J. (1990). Basic local alignment search tool. *Journal of Molecular Biology*, 215(3), 403–410. [https://doi.org/10.1016/s0022-2836\(05\)80360-2](https://doi.org/10.1016/s0022-2836(05)80360-2)
- Amman, B. R., Carroll, S. A., Reed, Z. D., Sealy, T. K., Balinandi, S., Swanepoel, R., Kemp, A., Erickson, B. R., Comer, J. A., Campbell, S., Cannon, D. L., Khristova, M. L., Atimmedi, P., Paddock, C. D., Crockett, R. J. K., Flietstra, T. D., Warfield, K. L., Unfer, R., Katongole-Mbidde, E., ... Towner, J. S. (2012). Seasonal pulses of Marburg virus circulation in juvenile *Rousettus aegyptiacus* bats coincide with periods of increased risk of human infection. *PLoS Pathogens*, 8(10), e1002877. <https://doi.org/10.1371/journal.ppat.1002877>
- Anderson, M. J. (2001). A new method for non-parametric multivariate analysis of variance. *Austral Ecology*, 26(1), 32–46. <https://doi.org/10.1111/j.1442-9993.2001.01070.pp.x>
- Begon, M., Telfer, S., Smith, M. J., Burthe, S., Paterson, S., & Lambin, X. (2009). Seasonal host dynamics drive the timing of recurrent epidemics in a wildlife population. *Proceedings of the Royal Society B: Biological Sciences*, 276(1662), 1603–1610. <https://doi.org/10.1098/rspb.2008.1732>
- Bergner, L. M., Orton, R. J., Benavides, J. A., Becker, D. J., Tello, C., Biek, R., & Streicker, D. G. (2019). Demographic and environmental drivers of metagenomic viral diversity in vampire bats. *Molecular Ecology*, 29(1), 26–39. <https://doi.org/10.1111/mec.15250>
- Brown, J. D., Swayne, D. E., Cooper, R. J., Burns, R. E., & Stallknecht, D. E. (2007). Persistence of H5 and H7 avian influenza viruses in water. *Avian Diseases*, 51(s1), 285–289. <https://doi.org/10.1637/7636-042806r.1>
- Buchfink, B., Xie, C., & Huson, D. H. (2014). Fast and sensitive protein alignment using DIAMOND. *Nature Methods*, 12(1), 59–60. <https://doi.org/10.1038/nmeth.3176>
- Bushnell, B. (2014). *BBMap: A fast, accurate, splice-aware aligner*. Lawrence Berkeley National Laboratory.
- Campbell, S. J., Ashley, W., Gil-Fernandez, M., Newsome, T. M., Giallonardo, F. D., Ortiz-Baez, A. S., Mahar, J. E., Towerton, A. L., Gillings, M., Holmes, E. C., Carthey, A. J. R., & Geoghegan, J. L. (2020). Red fox viromes in urban and rural landscapes. *Virus Evolution*, 6(2), veaa065. <https://doi.org/10.1093/ve/veaa065>
- Carlsake, D., Bennett, M., Hazel, S., Telfer, S., & Begon, M. (2006). Inference of cowpox virus transmission rates between wild rodent host classes using space-time interaction. *Proceedings of the Royal Society B-Biological Sciences*, 273(1588), 775–782. <https://doi.org/10.1098/rspb.2005.3400>
- Crist, T. O., Veech, J. A., Gering, J. C., & Summerville, K. S. (2003). Partitioning species diversity across landscapes and regions: A hierarchical analysis of  $\alpha$ ,  $\beta$ , and  $\gamma$  diversity. *The American Naturalist*, 162(6), 734–743. <https://doi.org/10.1086/378901>
- Dion, M. B., Oechslin, F., & Moineau, S. (2020). Phage diversity, genomics and phylogeny. *Nature Reviews Microbiology*, 18(3), 125–138. <https://doi.org/10.1038/s41579-019-0311-5>
- Drexler, J. F., Corman, V. M., Müller, M. A., Lukashev, A. N., Gmyl, A., Coutard, B., Adam, A., Ritz, D., Leijten, L. M., Riel, D. v., Kallies, R.,



- Klose, S. M., Gloza-Rausch, F., Binger, T., Annan, A., Adu-Sarkodie, Y., Oppong, S., Bourgarel, M., Rupp, D., ... Drosten, C. (2013). Evidence for novel Hepaciviruses in rodents. *PLoS Pathogens*, 9(6), e1003438. <https://doi.org/10.1371/journal.ppat.1003438>
- Drexler, J. F., Corman, V. M., Müller, M. A., Maganga, G. D., Vallo, P., Binger, T., Gloza-Rausch, F., Cottontail, V. M., Rasche, A., Yordanov, S., Seebens, A., Knörnschild, M., Oppong, S., Sarkodie, Y. A., Pongombo, C., Lukashev, A. N., Schmidt-Chanasit, J., Stöcker, A., Carneiro, A. J. B., ... Drosten, C. (2012). Bats host major mammalian paramyxoviruses. *Nature Communications*, 3(1), 796. <https://doi.org/10.1038/ncomms1796>
- Fearon, M. L., & Tibbetts, E. A. (2021). Pollinator community species richness dilutes prevalence of multiple viruses within multiple host species. *Ecology*, 102(5), e03305. <https://doi.org/10.1002/ecy.3305>
- Fichet-Calvet, E., Lecompte, E., Koivogui, L., Soropogui, B., Dore, A., Kourouma, F., Sylla, O., Daffis, S., Koulemou, K., & Meulen, J. T. (2007). Fluctuation of abundance and Lassa virus prevalence in *iMastomys natalensis/i* in Guinea, West Africa. *Vector-Borne and Zoonotic Diseases*, 7(2), 119–128. <https://doi.org/10.1089/vbz.2006.0520>
- Firth, C., Bhat, M., Firth, M. A., Williams, S. H., Frye, M. J., Simmonds, P., Conte, J. M., Ng, J., Garcia, J., Bhuva, N. P., Lee, B., Che, X., Quan, P. L., & Lipkin, W. I. (2014). Detection of zoonotic pathogens and characterization of novel viruses carried by commensal *Rattus norvegicus* in new York City. *MBio*, 5(5), 1–16. <https://doi.org/10.1128/mbio.01933-14>
- George, D. B., Webb, C. T., Farnsworth, M. L., O'Shea, T. J., Bowen, R. A., Smith, D. L., Stanley, T. R., Ellison, L. E., & Rupprecht, C. E. (2011). Host and viral ecology determine bat rabies seasonality and maintenance. *Proceedings of the National Academy of Sciences*, 108(25), 10208–10213. <https://doi.org/10.1073/pnas.1010875108>
- Han, B. A., Schmidt, J. P., Bowden, S. E., & Drake, J. M. (2015). Rodent reservoirs of future zoonotic diseases. *Proceedings of the National Academy of Sciences of the United States of America*, 112(22), 7039–7044. <https://doi.org/10.1073/pnas.1501598112>
- Harvey, E., & Holmes, E. C. (2022). Diversity and evolution of the animal virome. *Nature Reviews Microbiology*, 1–14, 321–334. <https://doi.org/10.1038/s41579-021-00665-x>
- Hermanns, K., Marklewitz, M., Zirkel, F., Kopp, A., Kramer-Schadt, S., & Junglen, S. (2021). Mosquito community composition shapes virus prevalence patterns along anthropogenic disturbance gradients. *BioRxiv*. <https://doi.org/10.1101/2021.02.04.429754>
- Hill, S. C., François, S., Thézé, J., Smith, A. L., Simmonds, P., Perrins, C. M., van der Hoek, L., & Pybus, O. G. (2022). Impact of host age on viral and bacterial communities in a waterbird population. *The ISME Journal*. <https://doi.org/10.1038/s41396-022-01334-4>
- Hirsch, B. T., Reynolds, J. J. H., Gehrt, S. D., & Craft, M. E. (2016). Which mechanisms drive seasonal rabies outbreaks in raccoons? A test using dynamic social network models. *Journal of Applied Ecology*, 53(3), 804–813. <https://doi.org/10.1111/1365-2664.12628>
- Horzinek, M. C., Flewett, T. H., Saif, L. J., Spaan, W. J. M., Weiss, M., & Woode, G. N. (1987). A new family of vertebrate viruses: Toroviridae. *Intervirology*, 27(1), 17–24. <https://doi.org/10.1159/000149710>
- Jamieson, F. B., Wang, E. E. L., Bain, C., Good, J., Duckmanton, L., & Petric, M. (1998). Human Torovirus: A new nosocomial gastrointestinal pathogen. *The Journal of Infectious Diseases*, 178(5), 1263–1269. <https://doi.org/10.1086/314434>
- Kalyaanamoorthy, S., Minh, B. Q., Wong, T. K. F., von Haeseler, A., & Jermini, L. S. (2017). ModelFinder: Fast model selection for accurate phylogenetic estimates. *Nature Methods*, 14(6), 587–589. <https://doi.org/10.1038/nmeth.4285>
- Kapoor, A., Simmonds, P., Scheel, T. K. H., Hjelle, B., Cullen, J. M., Burbelo, P. D., Chauhan, L. V., Duraisamy, R., Leon, M. S., Jain, K., Vandegriff, K. J., Calisher, C. H., Rice, C. M., & Lipkin, W. I. (2013). Identification of rodent homologs of hepatitis C virus and Pegivirus. *MBio*, 4(2), e00216–e00213. <https://doi.org/10.1128/mbio.00216-13>
- Kearse, M., Moir, R., Wilson, A., Stones-Havas, S., Cheung, M., Sturrock, S., Buxton, S., Cooper, A., Markowitz, S., Duran, C., Thierer, T., Ashton, B., Meintjes, P., & Drummond, A. (2012). Geneious basic: An integrated and extendable desktop software platform for the organization and analysis of sequence data. *Bioinformatics (Oxford, England)*, 28(12), 1647–1649. <https://doi.org/10.1093/bioinformatics/bts199>
- Knowles, S. C. L., Fenton, A., & Pedersen, A. B. (2012). Epidemiology and fitness effects of wood mouse herpesvirus in a natural host population. *The Journal of General Virology*, 93(Pt 11), 2447–2456. <https://doi.org/10.1099/vir.0.044826-0>
- Langmead, B. (2010). Aligning short sequencing reads with bowtie. *Current protocols in bioinformatics/Editorial board, Andreas D*, 11(1), Unit 11.7. <https://doi.org/10.1002/0471250953.bi1107s32>
- Latorre-Margalef, N., Tolf, C., Grosbois, V., Avril, A., Bengtsson, D., Wille, M., Osterhaus, A. D. M. E., Fouchier, R. A. M., Olsen, B., & Waldenström, J. (2014). Long-term variation in influenza A virus prevalence and subtype diversity in migratory mallards in northern Europe. *Proceedings of the Royal Society B: Biological Sciences*, 281(1781), 20140098. <https://doi.org/10.1098/rspb.2014.0098>
- Leigh, B. A., Bordenstein, S. R., Brooks, A. W., Mikaelyan, A., & Bordenstein, S. R. (2018). Finer-scale Phyllosymbiosis: Insights from insect Viromes. *MSystems*, 3(6), e00131–e00118. <https://doi.org/10.1128/msystems.00131-18>
- Li, C. X., Shi, M., Tian, J. H., Lin, X. D., Kang, Y. J., Chen, L. J., Qin, X. C., Xu, J., Holmes, E. C., & Zhang, Y. Z. (2015). Unprecedented genomic diversity of RNA viruses in arthropods reveals the ancestry of negative-sense RNA viruses. *eLife*, 2015(4), 1–26. <https://doi.org/10.7554/elife.05378>
- Li, D., Liu, C.-M., Luo, R., Sadakane, K., & Lam, T.-W. (2015). MEGAHIT: An ultra-fast single-node solution for large and complex metagenomics assembly via succinct de Bruijn graph. *Bioinformatics*, 31(10), 1674–1676. <https://doi.org/10.1093/bioinformatics/btv033>
- Long, J. A. (2020). Jtools: Analysis and presentation of social scientific data. <https://cran.r-project.org/package=jtools>
- Luis, A. D., Douglass, R. J., Mills, J. N., & Bjrnstad, O. N. (2015). Environmental fluctuations lead to predictability in sin Nombre hantavirus outbreaks. *Ecology*, 96(6), 1691–1701. <https://doi.org/10.1890/14-1910.1>
- Martin, M. (2011). Cutadapt removes adapter sequences from high-throughput sequencing reads. *EMBnet Journal*, 17(1), 10–12. <https://doi.org/10.14806/ej.17.1.200>
- Mazerolle, M. J. (2020). *AICcmoavg: Model selection and multimodel inference based on (Q)AIC(c)*. <https://cran.r-project.org/package=AICcmoavg>
- Mbithi, J. N., Springthorpe, V. S., & Sattar, S. A. (1991). Effect of relative humidity and air temperature on survival of hepatitis A virus on environmental surfaces. *Applied and Environmental Microbiology*, 57(5), 1394–1399. <https://doi.org/10.1128/aem.57.5.1394-1399.1991>
- Mbora, D. N. M., & McPeck, M. A. (2009). Host density and human activities mediate increased parasite prevalence and richness in primates threatened by habitat loss and fragmentation. *Journal of Animal Ecology*, 78(1), 210–218. <https://doi.org/10.1111/j.1365-2656.2008.01481.x>
- Mielke, S. R., & Garabed, R. (2020). Environmental persistence of foot-and-mouth disease virus applied to endemic regions. *Transboundary and Emerging Diseases*, 67(2), 543–554. <https://doi.org/10.1111/tbed.13383>
- Minh, B. Q., Schmidt, H. A., Chernomor, O., Schrempf, D., Woodhams, M. D., von Haeseler, A., & Lanfear, R. (2020). IQ-TREE 2: New models and efficient methods for phylogenetic inference in the genomic era. *Molecular Biology and Evolution*, 37(5), 1530–1534. <https://doi.org/10.1093/molbev/msaa015>



- Morand, S., Blasdel, K., Bordes, F., Buchy, P., Carcy, B., Chaisiri, K., Chaval, Y., Claude, J., Cosson, J., Desquesnes, M., Jittapalpong, S., Jiyipong, T., Karnchanabanthoen, A., Pornpan, P., Rolain, J., & Tran, A. (2019). Changing landscapes of Southeast Asia and rodent-borne diseases: Decreased diversity but increased transmission risks. *Ecological Applications*, 29(4), e01886. <https://doi.org/10.1002/eap.1886>
- Myer, M. H., & Johnston, J. M. (2019). Spatiotemporal Bayesian modeling of West Nile virus: Identifying risk of infection in mosquitoes with local-scale predictors. *Science of the Total Environment*, 650(Pt 2), 2818–2829. <https://doi.org/10.1016/j.scitotenv.2018.09.397>
- Oksanen, J., Blanchet, F. G., Friendly, M., Kindt, R., Legendre, P., McGlinn, D., Minchin, P. R., O'Hara, R. B., Simpson, G. L., Solymos, P., Stevens, M. H. H., Szoecs, E., & Wagner, H. (2020). *Vegan: Community ecology package*. <https://CRAN.R-project.org/package=vegan>
- Páez, D. J., Giles, J., McCallum, H., Field, H., Jordan, D., Peel, A. J., & Plowright, R. K. (2017). Conditions affecting the timing and magnitude of Hendra virus shedding across pteropodid bat populations in Australia. *Epidemiology and Infection*, 145(15), 3143–3153. <https://doi.org/10.1017/S0950268817002138>
- Phan, T. G., Kapusinszky, B., Wang, C., Rose, R. K., Lipton, H. L., & Delwart, E. L. (2011). The fecal viral flora of wild rodents. *PLoS Pathogens*, 7(9), e1002218. <https://doi.org/10.1371/journal.ppat.1002218>
- Raulo, A., Allen, B. E., Troitsky, T., Husby, A., Firth, J. A., Coulson, T., & Knowles, S. C. L. (2021). Social networks strongly predict the gut microbiota of wild mice. *The ISME Journal*, 1–13, 2601–2613. <https://doi.org/10.1038/s41396-021-00949-3>
- Roux, S., Brum, J. R., Dutilh, B. E., Sunagawa, S., Duhaime, M. B., Loy, A., Poulos, B. T., Solonenko, N., Lara, E., Poulain, J., Pesant, S., Kandels-Lewis, S., Dimier, C., Picheral, M., Searson, S., Cruaud, C., Alberti, A., Duarte, C. M., Gasol, J. M., ... Sullivan, M. B. (2016). Ecogenomics and potential biogeochemical impacts of globally abundant ocean viruses. *Nature*, 537(7622), 689–693. <https://doi.org/10.1038/nature19366>
- Shi, M., Lin, X. D., Chen, X., Tian, J. H., Chen, L. J., Li, K., Wang, W., Eden, J. S., Shen, J. J., Liu, L., Holmes, E. C., & Zhang, Y. Z. (2018). The evolutionary history of vertebrate RNA viruses. *Nature*, 556(7700), 197–202. <https://doi.org/10.1038/s41586-018-0012-7>
- Sobsey, M. D., Shields, P. A., Hurchman, F. S., Davis, A. L., Rullman, V. A., & Bosch, A. (1988). Survival and persistence of hepatitis A virus in environmental samples. In A. Zuckerman (Ed.), *Viral hepatitis and liver disease* (pp. 121–124). Alan R. Liss Inc..
- Susi, H., & Laine, A. (2021). Agricultural land use disrupts biodiversity mediation of virus infections in wild plant populations. *The New Phytologist*, 230(6), 2447–2458. <https://doi.org/10.1111/nph.17156>
- Telfer, S., Bennett, M., Bown, K., Cavanagh, R., Crespin, L., Hazel, S., Jones, T., & Begon, M. (2002). The effects of cowpox virus on survival in natural rodent populations: Increases and decreases. *Journal of Animal Ecology*, 71(4), 558–568. <https://doi.org/10.1046/j.1365-2656.2002.00623.x>
- Telfer, S., Bennett, M., Carls, D., Helyar, S., & Begon, M. (2007). The dynamics of murid gammaherpesvirus 4 within wild, sympatric populations of bank voles and wood mice. *Journal of Wildlife Diseases*, 43(1), 32–39. <https://doi.org/10.7589/0090-3558-43.1.32>
- The R Core Team. (2021). *R: A language and environment for statistical computing*. <https://www.R-project.org/>
- Tian, H., Yu, P., Bjørnstad, O. N., Cazelles, B., Yang, J., Tan, H., Huang, S., Cui, Y., Dong, L., Ma, C., Ma, C., Zhou, S., Laine, M., Wu, X., Zhang, Y., Wang, J., Yang, R., Stenseth, N. C., & Xu, B. (2017). Anthropogenically driven environmental changes shift the ecological dynamics of hemorrhagic fever with renal syndrome. *PLoS Pathogens*, 13(1), 1–19. <https://doi.org/10.1371/journal.ppat.1006198>
- Vanmechelen, B., Blets, M., Laenen, L., Lopes, A. R., Vergote, V., Beller, L., Deboutte, W., Korva, M., Županc, T. A., de Bellocq, J. G., Gryseels, S., Leirs, H., Lemey, P., Vrancken, B., & Maes, P. (2018). Discovery and genome characterization of three new Jeilongviruses, a lineage of paramyxoviruses characterized by their unique membrane proteins. *BMC Genomics*, 19(1), 617. <https://doi.org/10.1186/s12864-018-4995-0>
- Wang, W., Lin, X.-D., Zhang, H.-L., Wang, M.-R., Guan, X.-Q., Holmes, E. C., & Zhang, Y.-Z. (2020). Extensive genetic diversity and host range of rodent-borne coronaviruses. *Virus Evolution*, 6(2), veaa078. <https://doi.org/10.1093/ve/veaa078>
- Watts, C. H. S. (1968). The foods eaten by Wood mice (*Apodemus sylvaticus*) and Bank voles (*Clethrionomys glareolus*) in Wytham woods, Berkshire. *The Journal of Animal Ecology*, 37(1), 25. <https://doi.org/10.2307/2709>
- Wei, T., & Simko, V. (2021). *R package "corrplot": Visualization of a correlation matrix*. <https://github.com/taiyun/corrplot>
- Wille, M., Latorre-Margalef, N., Tolf, C., Halpin, R., Wentworth, D., Fouchier, R. A. M., Raghwan, J., Pybus, O. G., Olsen, B., & Waldenström, J. (2018). Where do all the subtypes go? Temporal dynamics of H8-H12 influenza A viruses in waterfowl. *Virus Evolution*, 4(2), vey025. <https://doi.org/10.1093/ve/vey025>
- Wille, M., Shi, M., Hurt, A. C., Klaassen, M., & Holmes, E. C. (2021). RNA virome abundance and diversity is associated with host age in a bird species. *Virology*, 561, 98–106. <https://doi.org/10.1016/j.virol.2021.06.007>
- Wille, M., Shi, M., Klaassen, M., Hurt, A. C., & Holmes, E. C. (2019). Virome heterogeneity and connectivity in waterfowl and shorebird communities. *The ISME Journal*, 13(10), 2603–2616. <https://doi.org/10.1038/s41396-019-0458-0>
- Williams, S. H., Che, X., Garcia, J. A., Klena, J. D., Lee, B., Muller, D., Ulrich, W., Corrigan, R. M., Nichol, S., Jain, K., & Lipkin, W. I. (2018). Viral diversity of house mice in new York City. *MBio*, 9(2), 1–17. <https://doi.org/10.1128/mbio.01354-17>
- Wood, S. N. (2011). Fast stable restricted maximum likelihood and marginal likelihood estimation of semiparametric generalized linear models. *Journal of the Royal Statistical Society: Series B (Statistical Methodology)*, 73(1), 3–36. <https://doi.org/10.1111/j.1467-9868.2010.00749.x>
- Wu, Z., Lu, L., Du, J., Yang, L., Ren, X., Liu, B., Jiang, J., Yang, J., Dong, J., Sun, L., Zhu, Y., Li, Y., Zheng, D., Zhang, C., Su, H., Zheng, Y., Zhou, H., Zhu, G., Li, H., ... Jin, Q. (2018). Comparative analysis of rodent and small mammal viromes to better understand the wildlife origin of emerging infectious diseases. *Microbiome*, 6(1), 178. <https://doi.org/10.1186/s40168-018-0554-9>
- Yan, L. (2021). *ggvenn: Draw Venn Diagram by "ggplot2"*. <https://CRAN.R-project.org/package=ggvenn>
- Zhang, Y.-Z., Shi, M., & Holmes, E. C. (2018). Using metagenomics to characterize an expanding virosphere. *Cell*, 172(6), 1168–1172. <https://doi.org/10.1016/j.cell.2018.02.043>

## SUPPORTING INFORMATION

Additional supporting information can be found online in the Supporting Information section at the end of this article.

**How to cite this article:** Raghwan, J., Faust, C. L., François, S., Nguyen, D., Marsh, K., Raulo, A., Hill, S. C., Parag, K. V., Simmonds, P., Knowles, S. C. L., & Pybus, O. G. (2022). Seasonal dynamics of the wild rodent faecal virome. *Molecular Ecology*, 00, 1–14. <https://doi.org/10.1111/mec.16778>