



HAL
open science

On the specific status of eastern Mediterranean *Dendrophyllia* corals (Cnidaria, Anthozoa): Genetic characterization and speciation scenarios

Didier Aurelle, Anne Haguenaer, Chloé Blaise, Lauric Reynes, Sophie Arnaud-Haond, Joana Boavida, Cédric Cabau, Christophe Klopp, Tomas Lundalv, Camille Noûs, et al.

► To cite this version:

Didier Aurelle, Anne Haguenaer, Chloé Blaise, Lauric Reynes, Sophie Arnaud-Haond, et al.. On the specific status of eastern Mediterranean *Dendrophyllia* corals (Cnidaria, Anthozoa): Genetic characterization and speciation scenarios. *Zoologica Scripta*, 2024, 53 (2), pp.235-247. 10.1111/zsc.12643 . hal-04354995

HAL Id: hal-04354995

<https://hal.inrae.fr/hal-04354995v1>

Submitted on 20 Dec 2023


HAL is a multi-disciplinary open access archive for the deposit and dissemination of scientific research documents, whether they are published or not. The documents may come from teaching and research institutions in France or abroad, or from public or private research centers.

L'archive ouverte pluridisciplinaire **HAL**, est destinée au dépôt et à la diffusion de documents scientifiques de niveau recherche, publiés ou non, émanant des établissements d'enseignement et de recherche français ou étrangers, des laboratoires publics ou privés.



Distributed under a Creative Commons Attribution - NonCommercial - NoDerivatives 4.0 International License

On the specific status of eastern Mediterranean *Dendrophyllia* corals (Cnidaria, Anthozoa): Genetic characterization and speciation scenarios

Didier Aurelle^{1,2,3}  | Anne Haguenaer² | Chloé Blaise² | Lauric Reynes^{1,4} |
Sophie Arnaud-Haond⁵ | Joana Boavida⁶ | Cédric Cabau⁷ | Christophe Klopp⁸ |
Tomas Lundalv⁹ | Camille Noûs¹⁰ | Stéphane Sartoretto¹¹ | Claudia Wienberg¹² |
Carlos E. Jiménez¹³ | Covadonga Orejas¹⁴

¹Aix Marseille Univ, Université de Toulon, CNRS, IRD, MIO, Marseille, France

²Aix Marseille Univ, Avignon Université, CNRS, IRD, IMBE, Marseille, France

³Institut Systématique Evolution Biodiversité (ISYEB), Muséum national d'Histoire naturelle, CNRS, Sorbonne Université, EPHE, Université des Antilles, Paris, France

⁴IRL 3614, Evolutionary Biology and Ecology of Algae, CNRS, UC, UACH, Sorbonne Université, Roscoff, France

⁵MARBEC, Univ Montpellier, CNRS, Ifremer, IRD, Sète, France

⁶CCMAR – Centro de Ciências do Mar, Universidade do Algarve, Faro, Portugal

⁷Sigenae, GenPhySE, Université de Toulouse, INRAE, ENVT, Castanet Tolosan, France

⁸Sigenae, MIAT UR875, INRAE, Castanet Tolosan, France

⁹Tjärnö Marine Laboratory, University of Gothenburg, Gothenburg, Sweden

¹⁰Laboratoire Cogitamus, Marseille, France

¹¹IFREMER, LITTORAL, La Seyne-sur-Mer, France

¹²MARUM, University of Bremen, Bremen, Germany

¹³Enalia Physis Environmental Research Centre, Nicosia, Cyprus

¹⁴Spanish Institute of Oceanography, Gijón Oceanographic Centre (IEO-CSIC), Gijón, Spain

Correspondence

Didier Aurelle, Institut Méditerranéen d'Océanographie, Institut Pythéas, Aix-Marseille University, Campus de Luminy – OCEANOMED, Bâtiment Pacifique, 13288 MARSEILLE cedex 09, France.

Email: didier.aurelle@univ-amu.fr

Funding information

A*MIDEX; FEDER fund, Grant/Award Number: 1166-39417; H2020 Environment, Grant/Award Number: 818123; Total Foundation, Grant/Award Number: BIO_2014_091_Juin_CS-8

Abstract

The deep-sea corals *Dendrophyllia ramea* and *Dendrophyllia cornigera* occur in Mediterranean and Atlantic waters. Both species are found in different environmental conditions, and they can colonize hard and soft substrates. These species then display an important ecological plasticity along with morphological plasticity. Nevertheless, there is a large knowledge gap on the genetic characteristics of the two species, including on the relationships between them and the possibility of cryptic species along their range. The recent discovery of *Dendrophyllia* populations off Cyprus in the eastern Mediterranean Sea raised new questions in this context. These corals were related to *D. ramea* but had some morphological

Carlos E. Jiménez and Covadonga Orejas equally contributed to the study.

This is an open access article under the terms of the [Creative Commons Attribution-NonCommercial-NoDerivs](https://creativecommons.org/licenses/by-nc-nd/4.0/) License, which permits use and distribution in any medium, provided the original work is properly cited, the use is non-commercial and no modifications or adaptations are made.

© 2023 The Authors. *Zoologica Scripta* published by John Wiley & Sons Ltd on behalf of Royal Swedish Academy of Sciences.

differences with other known populations of this species. Here, we study the specific status of *Dendrophyllia* corals from Cyprus on the basis of morphology and genetics. The genetic data are interpreted by comparison with the same analysis performed on two *Caryophyllia* species. Both morphological and genetic data confirm that corals found off Cyprus belong to the *D. ramea* species. We further tested the speciation scenario using transcriptome data: the results indicate an absence of current gene flow between *D. ramea* and *D. cornigera* and that the divergence occurred more than 3 million years ago. We discuss the possible historical and ecological factors which may have shaped speciation in these species.

KEYWORDS

Caryophyllia, corals, *Dendrophyllia*, genetics, morphology, species delimitation, transcriptome

1 | INTRODUCTION

Though less well-studied and publicized than their shallow-water counterparts, at least until recent years, deep-sea corals (DSC; i.e., coral species occurring below 50 m depth; Cairns, 2007) correspond to an important part of the diversity of Scleractinians, with 622 of the 7111 azooxanthellate scleractinian species occurring deeper than 50 m (Roberts et al., 2009). DSC develop complex three-dimensional structures, which can support an important biodiversity (Buhl-Mortensen et al., 2017; Henry & Roberts, 2017; Roberts et al., 2009; Rueda et al., 2019). The research on DSC in the Mediterranean has already a long history (Evans et al., 2019; Orejas & Jiménez, 2019). In the last years, many advances have been done regarding knowledge on their occurrence and distribution (Evans et al., 2019; Orejas & Jiménez, 2019; Taviani et al., 2017), associated biodiversity (Rueda et al., 2019), as well as some molecular studies (Altuna & Polisenio, 2019; Boavida, Becheler, Addamo, et al., 2019).

However, the study of the genetic diversity of DSC is still in its infancy, although fundamental, as the analysis of the genetic structure of coral populations gives important information on the connectivity and population structure, including the levels of clonal reproduction whenever applicable (Dahl et al., 2012). Further, population genomic data can be used to study the adaptation to local conditions such as depth or temperature (Pratlong et al., 2021). This last point has important consequences for the future evolution of coral populations in the context of climate change. For example, it has been proposed that deeper populations, less impacted by climate change than shallower ones, may contribute to the reseedling of shallow populations, the so-called deep refuge hypothesis (Bongaerts et al., 2017). Nevertheless, this is indeed a hypothesis, and such a reseedling scenario may not apply to all coral species (Bongaerts et al., 2017). The study of

genetic differentiation and adaptation to local environmental conditions is important for evolution-based management actions (Chen et al., 2022). However, genetic studies of connectivity and adaptation should rely on sound species delimitation (Pante et al., 2015). A correct species delimitation is also useful to better understand the evolution of deep ecosystems, for example, to test hypotheses on endemism (Castelin et al., 2010). The analysis of speciation scenarios can also be used to test occurrence of ongoing gene flow between species, with potential consequences for management and conservation (De Jode et al., 2022; Roux et al., 2016).

The questions of speciation processes and species delimitation are particularly challenging and complex in anthozoans. The number of anthozoan species may have been underestimated in some groups because of a combination of morphological plasticity (Marti-Puig et al., 2014), morphological stasis (Bongaerts et al., 2021), or hybridization (Vollmer & Palumbi, 2004). Depending on the anthozoan taxa, mitochondrial DNA may provide adequate discrimination of the main specific units or not (Calderón et al., 2006; Erickson et al., 2021; Gélin et al., 2017). For example, in octocorals, the lack of variation of mitochondrial DNA limits its use for species delineation and barcoding (Aurelle et al., 2017; Calderón et al., 2006; McFadden et al., 2011). Conversely, in *Pocillopora* hexacorals, mitochondrial DNA can be useful for a first discrimination of species, to be complemented with independent and more variable molecular markers, such as microsatellites (Gélin et al., 2017) and single-nucleotide polymorphisms (SNPs; Oury et al., 2023).

In the Mediterranean Sea, studies of DSC mainly focused on the western basin (Evans et al., 2019; Orejas, Gori, et al., 2019). Among the Mediterranean DSCs, two species from the genus *Dendrophyllia*, *D. cornigera* and *D. ramea*, occur in the western and eastern basins (Castellan et al., 2019; Salomidi et al., 2010; Zibrowius, 1980). However, in the eastern Mediterranean,

the observations of live DSCs only referred to *D. cornigera* in the South of Crete (Salomidi et al., 2010), and *D. ramea* in Cyprus (Orejas et al., 2017; Orejas, Gori, et al., 2019; Orejas, Jiménez, et al., 2019), and Lebanon (Bigagli et al., 2018), along with some observations in the Ionian Sea (Angiolillo et al., 2022). The characterization of new DSC populations in the eastern Mediterranean can bring important information on the ecology and evolution of *Dendrophyllia* corals. Indeed, the occurrence of a species in such contrasted and distant locations (Atlantic, western and eastern Mediterranean) raises the question of the connectivity among populations for these two species, as well as their adaptation to local environments. Additionally, important genetic differentiation has been observed for several marine species between Atlantic and western Mediterranean populations and between eastern and western Mediterranean populations (e.g. Arnaud-Haond et al., 2007; Boavida, Becheler, Choquet, et al., 2019; Borsa et al., 1997; Coelho et al., 2023; El Ayari et al., 2019; Patarnello et al., 2007). Such phylogeographic breaks are important to understand the evolutionary history of species and therefore should be considered for DSC as well (Boavida, Becheler, Choquet, et al., 2019).

In 2015, the scientific cruise CYCLAMEN onboard the research vessel Aegeo, as part of the research project CYCLAMEN (TOTAL foundation), conducted the first studies of the distribution of *D. ramea* in a specific area off the eastern coast of Cyprus (Orejas, Gori, et al., 2019; Orejas, Jiménez, et al., 2019). There, the species was mainly observed between 125 and 155 m depth (Orejas, Gori, et al., 2019). The colonies were morphologically identified as a slender form of *D. ramea*, which contrasted with other more robust forms observed for this species in shallower waters off Portugal and Spain (Orejas et al., 2017; Orejas, Gori, et al., 2019). These morphological characteristics raised the question of the specific status of the *Dendrophyllia* specimens from Cyprus: do they correspond to a population of *D. ramea* differentiated from other known populations or maybe to a different species? Here, we address this question through the use of morphological and genetic (mitochondrial barcoding) data. We compared the samples from Cyprus from one side with *D. ramea* samples from other Mediterranean locations as well as from Atlantic areas and from the other side with *D. cornigera* samples from Atlantic and Mediterranean samples. We used another pair of congeneric Mediterranean scleractinians, *Caryophyllia inornata* and *C. smithii*, as a comparison to interpret the observed mitochondrial divergence in the *Dendrophyllia* genus. We completed these results with transcriptome sequencing in order to study the processes of speciation between the two *Dendrophyllia* species: this aims at understanding the history of divergence of the species and to test for current gene flow between them.

2 | MATERIALS AND METHODS

2.1 | Species distribution and sampling sites

Dendrophyllia cornigera (Lamarck, 1816) is known from the eastern and western Mediterranean Sea, from the Atlantic from the northern-most locations in Ireland, to the Archipelagos of Azores and Cabo Verde in the south (Castellan et al., 2019; Zibrowius, 1980; see Figure 1a as well). For mitochondrial sequencing, we used samples from the Lacaze-Duthiers Canyon near Banyuls (France) and from southern Portugal (Figure 1b). The transcriptome sequencing of *D. cornigera* was based on samples from the Balearic Islands (Figure 1b) kept alive in the aquaria facilities of the Monaco Scientific Center (CSM). We also sequenced the transcriptome of a *D. cornigera* colony from the Lacaze-Duthiers Canyon, which was kept alive at the biological station of Banyuls sur Mer (France). *Dendrophyllia ramea* (Linné, 1758) is known from the western Mediterranean, and from the eastern Atlantic, from Portugal to Cabo Verde (Salvati et al., 2021; Zibrowius, 1980; Figure 1a) and more recently from the eastern Mediterranean, in Greece, Cyprus, and Lebanon (Orejas et al., 2017; Orejas, Gori, et al., 2019; Orejas, Jiménez, et al., 2019; Salomidi et al., 2010). For mitochondrial sequencing, we used samples from Cyprus and southern Portugal (Figure 1b). The transcriptome sequencing of *D. ramea* was based on samples from Cyprus (Orejas et al., 2017; Orejas, Gori, et al., 2019; Orejas, Jiménez, et al., 2019), which were kept alive at the CSM (Table 1).

For a comparison on the inter-specific divergence of the mitochondrial DNA, we also sequenced samples of two *Caryophyllia* species: *Caryophyllia inornata* (Duncan, 1878), which is known in the whole Mediterranean Sea and in the eastern Atlantic, between the English Channel, Azores, and Canary Islands (Zibrowius, 1980), and *Caryophyllia smithii* Stokes & Broderip, 1828, which is present in the entire Mediterranean Sea and in the eastern Atlantic from mid-Norway and the Shetland islands, down to Azores and Congo (Zibrowius, 1980; Norwegian Biodiversity Information Centre; OBIS). For *C. inornata*, we used samples from three sites along the French Mediterranean coast (Figure S1), including the Drôme and Saint Dominique wrecks near Marseille (Table 1). For *C. smithii*, we used samples from the same wrecks as those of *C. inornata* (corresponding then to a sampling on the same site for the two species) and samples from the North Sea (Skagerrak; Sweden).

2.2 | Morphological analysis

Five *Dendrophyllia ramea* specimens were collected from different locations in the coral community off

Protaras (Cyprus; Table 1) using the Max Rover remotely operated vehicle (ROV) manipulator, on station 4, transect 2 (see Table S1 for details). Samples were obtained from entire colonies in most cases. The skeletal material of five selected colonies (15–20 cm maximum length) was cleansed from the organic material by immersion in diluted (5%) sodium hypochlorite, freshwater-rinsed, and air-dried for further inspection. Morphological characteristics were analysed utilizing available descriptions (Cairns, 2001; Cairns & Kitahara, 2012; Zibrowius, 1980).

2.3 | Analysis of mitochondrial sequences

For the barcoding approach, we sequenced part of the Cytochrome Oxidase I (COI) mitochondrial locus. The number and location of samples are indicated in Table 1. For the PCR amplification of COI, we used the primers COI_Caryophyllia_F AACAGCACATGCTTTTA TTATGAT and COI_Caryophyllia_R CCGGCTAAAAC AGGTAAAGATAA, designed on the basis of *Caryophyllia* COI sequences from GenBank. The PCR conditions for a

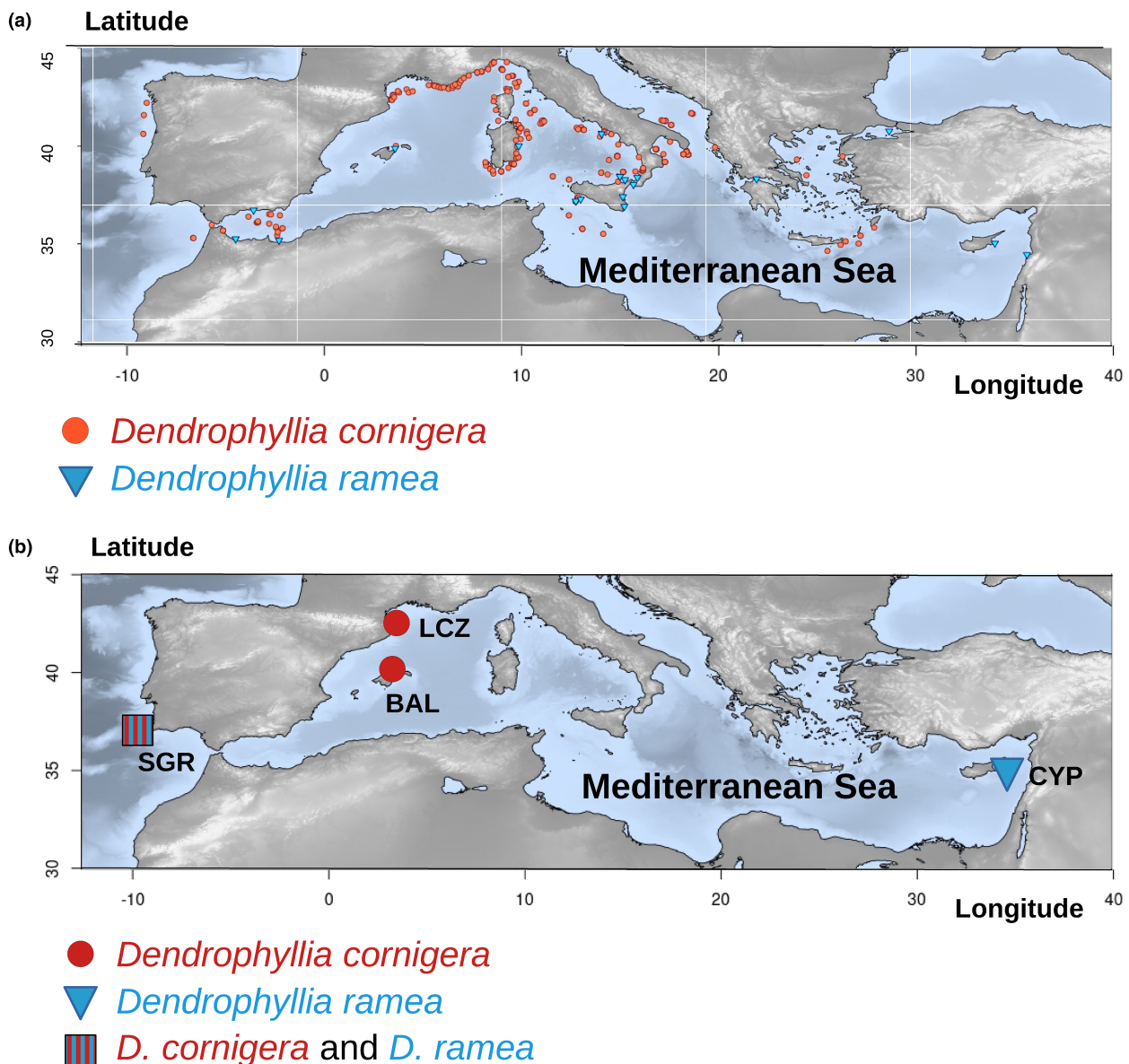


FIGURE 1 (a) Distribution of *D. ramea* and of *D. cornigera* in the Mediterranean Sea and neighbouring Atlantic. Based on Bigagli et al. (2018), Enrichetti et al. (2023), and Salvati et al. (2021). (b) Map of sampling sites for *Dendrophyllia* species. The codes refer to the sample list of Table 1. The dot with mixed colours indicates a sampling of the two species in sympatry. The maps have been created with the marmap R package (Pante & Simon-Bouhet, 2013). (a) Distribution. (b) Sampling.

TABLE 1 List and characteristics of samples used for genetic analyses.

Species	Region	Site	Code	Year	Depth m	N mit	N transc
<i>Dendrophyllia cornigera</i>	W Med	Balearic Islands, Menorca channel	BAL	2010	180–330	0	2
<i>Dendrophyllia cornigera</i>	W Med	Lacaze-Duthiers Canyon, Banyuls France	LCZ	NA	NA	3	1
<i>Dendrophyllia cornigera</i>	E Atl	Sagres, Portugal	SGR			1	0
<i>Dendrophyllia ramea</i>	E Med	Cyprus, Protaras	CYP	2015	150	1	2
<i>Dendrophyllia ramea</i>	E Atl	Sagres, Portugal	SGR			2	0
<i>Caryophyllia inornata</i>	W Med	Drôme wreck, Marseille France	DRO	2015	50	2	0
<i>Caryophyllia inornata</i>	W Med	Fréjus, France	FREJ	2015	20	2	0
<i>Caryophyllia inornata</i>	W Med	Maïre Island, Marseille France	MAI	2015	20	3	0
<i>Caryophyllia inornata</i>	W Med	Saint Dominique wreck, Marseille France	SDO	2015	30	0	3
<i>Caryophyllia smithii</i>	W Med	Drôme wreck, Marseille France	DRO	2015	50	2	0
<i>Caryophyllia smithii</i>	N Sea	East Søndre Søster, Sweden	ESS	2012	35–37	6	0
<i>Caryophyllia smithii</i>	W Med	Saint Dominique wreck, Marseille France	SDO	2015	30	0	3

Note: N mit and N transc correspond to the sample size for mitochondrial and transcriptome sequencing, respectively. The sampling location of *Dendrophyllia* in Cyprus (CYP) is described in Orejas, Gori, et al. (2019).

Abbreviations: Atl, Atlantic Ocean; Med, Mediterranean Sea; N Sea, North Sea; NA, unknown data for a sample held in the aquarium since several years when analysed.

25- μ L final volume were as follows: Promega PCR buffer 1X, MgCl₂ 2.5 mM, 0.25 mM of each dNTP, 0.4 μ M of each primer, Flexigotaq polymerase (Promega) 0.5 U, and 2.5 μ L of DNA. The PCR program was as follows: 5 min at 94°C, 30 cycles with (1 min at 94°C, 1 min at 57°C, 1 min at 72°C), and a final extension of 10 min at 72°C. The PCR products were sent for sequencing at the Eurofins Genomics company.

The mitochondrial sequences have been analysed with UGENE v35 (Okonechnikov et al., 2012). The sequences from *Dendrophyllia* and *Caryophyllia* obtained here were used for a Blast search for similar sequences in GenBank. As our objective was not an in-depth study of phylogenetic relationships inside Caryophylliidae or Dendrophylliidae (see Kitahara et al., 2016; Quek et al., 2023 for more extended phylogenetic studies of Scleractinian corals), we only chose sequences close to those obtained here, from congeneric species or from related genera. Sequences were aligned with MUSCLE (Edgar, 2004) in UGENE. The phylogenetic reconstructions have been performed with the Maximum-Likelihood (ML) approach of IQ-TREE 2.1.1 (Nguyen et al., 2015). We used the ModelFinder option (Kalyaanamoorthy et al., 2017), and robustness was evaluated with 1000 ultrafast bootstraps (Hoang et al., 2018). The tree has been visualized with FigTree 1.4.4 (Rambaut, 2006) and was rooted at mid-point. The Genbank accession numbers of mitochondrial COI sequences obtained here or retrieved from GenBank are listed in Appendix S2.

2.4 | Analysis of the speciation scenario with transcriptome sequences

Total RNA has been extracted as in Haguenaer et al. (2013). RNAs were sent to the Genotoul platform for sequencing on one HiSeq 3000 lane (2 \times 150 bp). The *D. ramea* and *D. cornigera* transcriptomes have been assembled with the *de novo* RNA-Seq Assembly Pipeline (DRAP; Cabau et al., 2017) with Oases (Schulz et al., 2012) and default parameters. We performed an individual assembly and a meta-assembly to be used as reference. The statistics describing the assembled transcriptomes are given in Table S2. The reads of each sample were mapped on the corresponding reference transcriptome with bwa mem option (Li & Durbin, 2009). The obtained sam files were converted in bam format and sorted with samtools 1.9 (Li et al., 2009). SNP genotypes were called with reads2snp with default parameters (Gayral et al., 2013; Tsagkogeorga et al., 2012). The resulting SNP dataset was first used to produce a network among samples: this tree was used to test if the different samples grouped well according to their specific status inferred from morphology and mitochondrial DNA whenever available. We used VCFtools (Danecek et al., 2011) to retain only variable positions and TASSEL 5.0 (Bradbury et al., 2007) to produce a distance matrix among samples based on the identity by state computed for the different positions. The resulting distance matrix was

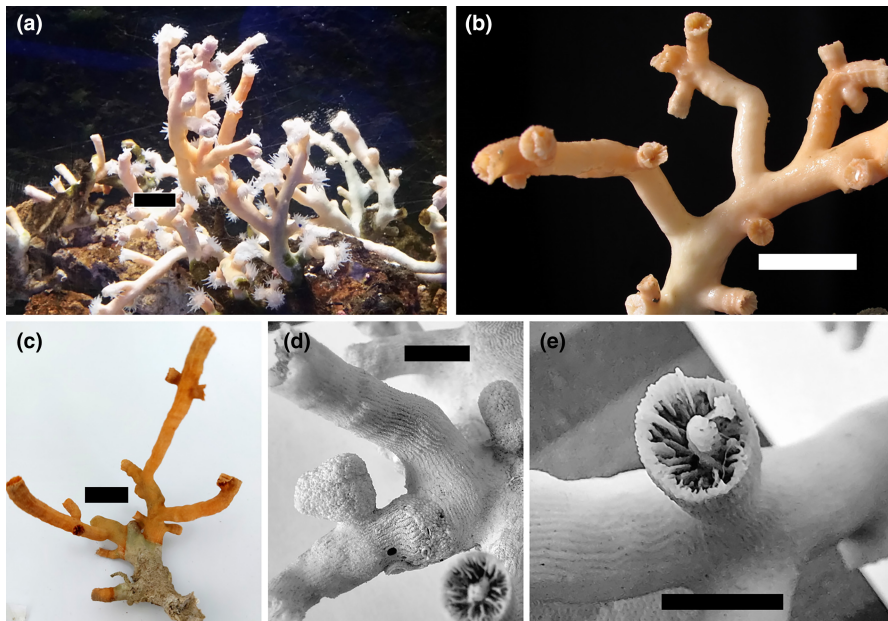


FIGURE 2 *Dendrophyllia ramea* colonies (130–150 m depth) from Protaras (Cyprus). Living colonies kept at the Protaras Ocean Aquarium (a). Typical slender form of colonies (b, c, d). Grooved surface of the corallum (d). Detail of the columella (e). For panels a–c, the scale varies in this perspective; sections near the scale bar are 20 mm. Scale bar 5 mm for panels (d, e).

used to produce a NeighborNet network with SplitsTree 5 (Huson & Bryant, 2006). This approach aimed at giving a crude representation of the distances among samples from *D. cornigera* and *D. ramea*. On the basis of these species categorizations, we studied speciation scenarios with the Demographic Inferences with Linked Selection (DILS) pipeline (Csilléry et al., 2012; Fraïsse et al., 2021; Pudlo et al., 2016). Briefly, DILS uses an Approximate Bayesian Computation (ABC) approach to analyse evolutionary scenarios in a hierarchical way (see figure 3 in Fraïsse et al., 2021). First, it will compare models with and without ongoing gene flow between the two species. Second, in case of ongoing gene flow, it will compare Isolation-Migration (IM) and Secondary Contact (SC) models. In case of current isolation, it will compare Strict Isolation (SI) and Ancestral Migration (AM) models. Third, for the models with current isolation, it will compare a model with homogeneous effective size among loci with a model with heterogeneous effective size among loci: this allows to model variation of drift among loci because of effects of linked selection. For the models with ongoing gene flow, DILS will compare the two models of effective sizes and a model with homogeneous gene flow with a model with heterogeneous gene flow among loci: this last comparison is used to test for the presence of barriers to gene flow in the genome. DILS was run online at <http://dils.univ-lyon1.fr/>. The parameters of the different analyses are detailed in Table S3. The transcriptome raw sequences have been deposited in the European Nucleotide Archive (ENA) at EMBL-EBI under accession number PRJEB63106 (<https://www.ebi.ac.uk/ena/browser/view/PRJEB63106>).

3 | RESULTS

3.1 | Morphological description

Based on gross morphological characteristics of the corallum, the Cyprus specimens were assigned to the *Dendrophyllia ramea* species (Figure 2): arborescent and robust growth form; colonies with large axial corallites from successive extratentacular budding; septal symmetry hexamerous; septa arranged in a Pourtalès plan; six septal cycles; lateral short corallites usually arranged in opposite sides of the branches, almost in an alternating distribution, displaying a pronounced spongy/papillose columella; lateral calices branch off along the axis of the terminal calyx; surface of the corallum distinctively grooved. The living colonies displayed dark, light orange, to almost pink-coloured tissue; the identification of these samples as *D. ramea* was confirmed by Helmut Zibrowius (Personal communications). The specimens analysed here and obtained with ROV were also morphologically similar to other *D. ramea* samples that have been collected as bycatch in other areas along the Cypriot coast (C. Jimenez, unpublished data).

3.2 | Phylogenetic analysis with mitochondrial markers

The phylogenetic tree based on COI sequences is presented in Figure 3. Regarding the two *Dendrophyllia* species analysed here, the mitochondrial COI sequences of *D. cornigera* and *D. ramea* were different, though with low divergence. No polymorphism was observed within each of these two species. These sequences were grouped

in a well-supported clade (clade A; 92% bootstrap) with sequences from other *Dendrophyllia* species, as well as species from other genera such as *Tubastrea* or *Madracis*. The phylogenetic relationships inside this clade A were not well-resolved. Importantly, these results agree with the identification of the recently discovered population of Cyprus as *D. ramea*. Regarding *Caryophyllia*, the COI mitochondrial locus also showed the distinction of *C. smithii* and *C. inornata*, without variation inside each species, whatever the geographical origin of the samples. The sequences of both species were grouped in the same clade (clade B; 88% bootstraps) along with sequences from other *Caryophyllia* and *Stenocyathus* species.

3.3 | Species divergence and scenario of speciation with transcriptomic data

The number of raw sequences per sample varied between 26×10^6 (for *D. ramea* MON_A) and 30.5×10^6 (for *D. cornigera* BAN_A; Table S2). The number of contigs obtained after assembly per sample varied between 53,943 and 56,581. The networks of distances among samples based on all variable positions are presented in Figure S2: the grouping of samples corresponds well to the morphological identification, with a clear distinction between *D. ramea* and *D. cornigera*.

The analysis of speciation scenarios was based on a final dataset with 1381 loci, with a mean F_{ST} among loci between species of 0.53 (Table S4). The analyses with constant and variable population sizes led to the same inferred scenario, with clear signals of current isolation (i.e., no gene flow) and heterogeneous effective size among loci (Table S4). In both cases, the data did not allow discriminating the scenarios of ancestral migration and strict isolation. The estimated divergence time was higher for the model with variable compared to constant population size. The estimated current effective size was higher for *D. cornigera* than for *D. ramea* with constant population size, but a reverse pattern was observed with variable population size (Table S4). When considering the median estimates, the gene flow during ancestral migration corresponded to 5% and 7% of the total divergence time for the models with constant and variable population size, respectively.

4 | DISCUSSION

4.1 | Species identity of *Dendrophyllia* corals from Cyprus

Morphological characteristics, especially at the skeleton level, have initially been the main characteristics used in

the systematics of corals (Kitahara et al., 2016). The information supplied by morphology in coral systematics can be limited by several factors: intra-specific polymorphism, intra-colony variability, and morphological plasticity (Kitahara et al., 2016; Paz-García et al., 2015). The integration of genetic information is then useful for species delimitation in corals (Gélin et al., 2017).

Here, both morphological and genetic data agreed on the identification of Cyprus samples as *D. ramea*. From a genetic point of view, the COI mitochondrial sequence clearly linked the samples of Cyprus to *D. ramea*, with a grouping with other sequences from this species obtained here from Sagres (Atlantic). Conversely, other samples used here, and identified morphologically as *D. cornigera*, grouped separately from *D. ramea* and were identical to another *D. cornigera* sequence from GenBank. One can note that the divergence among *Dendrophyllia* species was quite low with COI. This low inter-specific divergence was also observed for the *Caryophyllia* species studied here. This relatively low divergence is consistent with the generally low rate of evolution of mitochondrial DNA observed in anthozoans (Calderón et al., 2006; Shearer et al., 2002), though with exceptions (Muthye et al., 2022).

The phylogeny obtained with mitochondrial sequences was not well-resolved, with several nodes lacking support, and several genera did not appear monophyletic. This lack of monophyly of genera in the Dendrophylliidae family has already been observed with two mitochondrial and one nuclear markers (Arrigoni et al., 2014). Nevertheless, our results also underline the need to go further than mitochondrial sequences to work on species delimitation in this family. Here, the transcriptome data clearly separated *D. ramea* and *D. cornigera* and agreed with the identification of Cyprus samples as *D. ramea*. Unfortunately, we did not get any transcriptome sequences for *D. ramea* samples from Portugal, which would be useful for a better understanding of the phylogeography of this species. This would be especially interesting to test for the divergence between Atlantic and Mediterranean populations observed in various marine species (Patarnello et al., 2007).

Regarding morphology, the colonies in the Cyprus population appeared slender when compared to other *D. ramea* populations. Despite this observation, the characteristics analysed here in Cyprus samples were different from those observed in *D. cornigera* and confirmed their identification as *D. ramea*. Specifically, in contrast to *D. ramea*, *D. cornigera* has five septal cycles with all septa of similar size; calices stem from the base, never arranged in series, and they are smaller and less numerous than in *D. ramea*.

The morphological differences observed between colonies of *D. ramea* from Cyprus and from other locations could be explained by two, non-mutually exclusive hypotheses. First, these morphological variations could be

driven by developmental plasticity in response to different environmental factors, such as sediment regimes and depth. The effect of sediment in the singular morphology of the specimens from Cyprus can be hypothesized due to the singular growth that the polyps of *D. ramea* display in the most distal part of the branches (see figure 23. 1c in Orejas, Jiménez, et al., 2019). To the best of our knowledge, the Cypriot *D. ramea* population (dozens if not hundreds of colonies) and the few colonies off Tarabulus/Batroum in Lebanon are the deepest in the Mediterranean, and both are thriving on soft bottom and exhibit similar morphologies. A soft substrate might influence the growth pattern with a constraint for polyps not to be covered by sediments (Orejas, Gori, et al., 2019; Orejas, Jiménez, et al., 2019); such a morphological diversity according to the environment has also been proposed in the solitary species *C. smithii* (Zibrowius, 1971). Secondly, the morphological differences could also be determined by genetic differences in a context of the same or different related species. A more extended study of *D. ramea* populations in the Mediterranean, especially in the eastern basin, would be useful to go further on this question as well.

4.2 | Speciation scenarios in *Dendrophyllia*

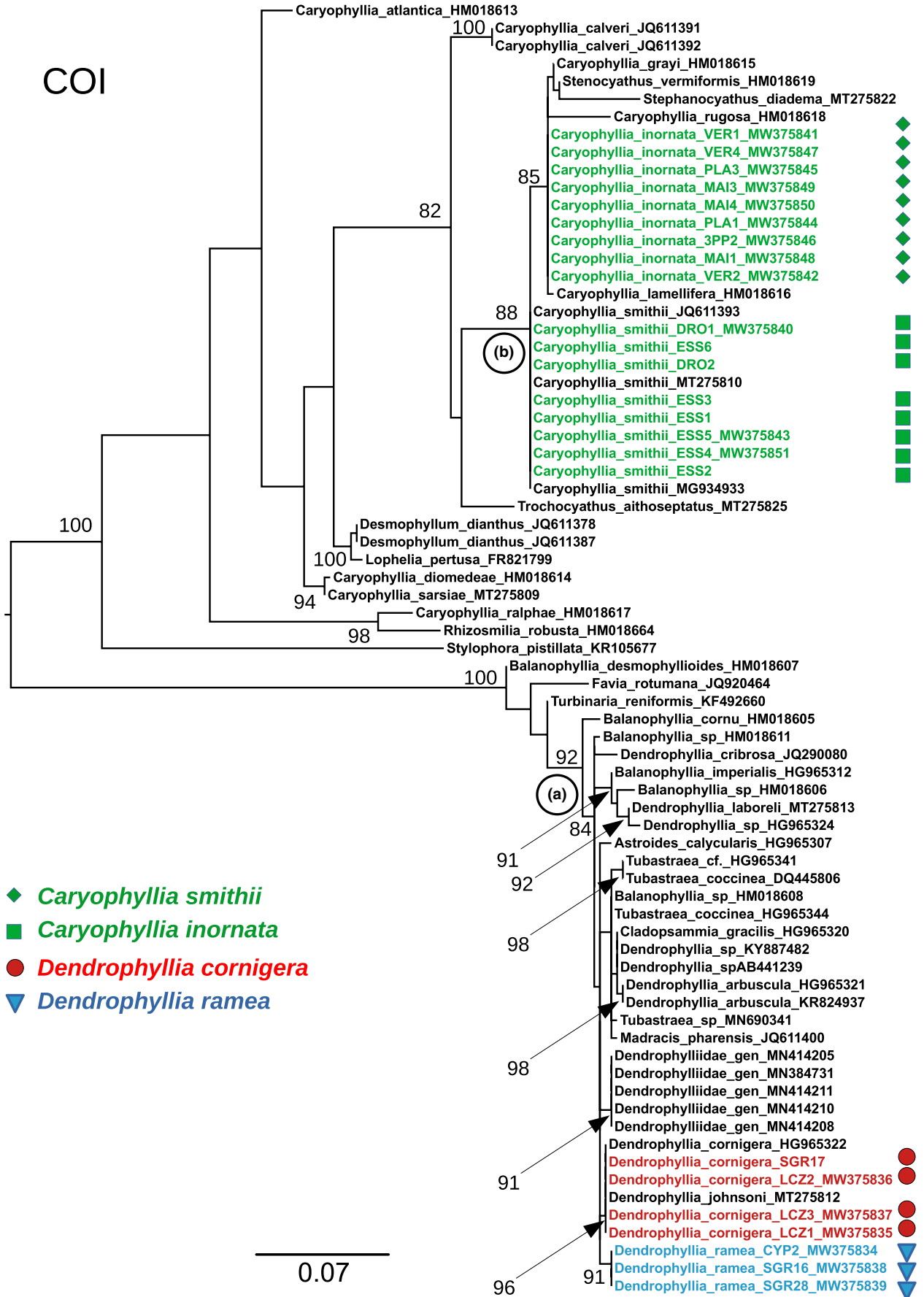
The analysis of speciation scenario clearly supported a current isolation for the populations of *D. ramea* and *D. cornigera* studied here: though corresponding to geographically distant populations, this result points to a complete speciation with well-separated evolutionary lineages. It might also be noted that the F_{ST} estimated here for this comparison (around 0.53) is around the F_{ST} value (0.56) used by De Jode et al. (2022) and Roux et al. (2016) as the upper limit of their *grey zone* of speciation, above which most comparisons involved well-separated species. The only uncertainty regarding speciation scenarios here was between ancestral migration and strict isolation (i.e., no past gene flow): such uncertainty can be observed when the period of ancient gene flow is short (Fraïsse et al., 2021). Accordingly, with the scenario of ancestral migration, the length of the period of gene flow was short compared to the total divergence time. The median of the estimated divergence time was around 1.3–1.7 million generations depending on the model. This estimate depends on an unknown mutation rate. Without further information, we used the default prior mutation rate of DILS, i.e., 3×10^{-9}

per generation and per nucleotide, but this should be refined with a dedicated genomic study with calibration points. The generation time of *Dendrophyllia* species is not known. As a comparison, for another Mediterranean, but solitary, *Dendrophyllidae* coral: *Balanophyllia europaea*, sexual maturity occurs approximately when specimens reach the age of 3 years (Goffredo et al., 2002). If we use this value as a surrogate of generation time for the species analysed here, the divergence time between *D. ramea* and *D. cornigera* would be between 3.9 and 5.1 million years (Ma). This result is in line with other analyses of divergence time in Scleractinians: Johnston et al. (2017) estimated a maximum divergence time around 3 Ma for five *Pocillopora* species and 9 Ma for two *Seratiopora* species. Such estimates evidently depend on the species or populations used for comparison. It would then be interesting to analyse not only other populations from these two species but also other *Dendrophyllia* species to refine our scenarios of speciation in this genus.

The two competing speciation scenarios retained here then involve a relatively long time without gene flow. Both *Dendrophyllia* species have overlapping distribution range in the Mediterranean Sea and eastern Atlantic Ocean (Gori et al., 2014; Salvati et al., 2021; Zibrowius, 1980). *Dendrophyllia ramea* is present in shallower areas (20 to ca. 170 m depth) than *D. cornigera* (70 to more than 700 m depth) (Castellan et al., 2019), but with some possible overlap as well. Therefore, it seems possible that these two species may be currently in contact but do not hybridize because of reproductive incompatibilities (i.e., complete speciation). The evolution of reproductive isolation could have taken place thanks to past allopatric ranges (e.g., in different basins because of past fluctuations of sea level). In this context, the Messinian salinity crisis, between 6.3 and 5.3 Ma ago (according to estimates; Krijgsman et al., 1999; Manzi et al., 2013; Rouchy & Caruso, 2006), could have played a role in the first divergence steps of these two *Dendrophyllia* species. Differences in depth range could also be involved in speciation, as proposed for the evolution of the *Paramuricea* octocoral genus (Quattrini et al., 2022). The oldest known *Dendrophyllia* fossils have been found from early–middle Miocene deposits (Vertino et al., 2014). The more recent divergence time estimated here (during Pliocene) is then consistent with this datation.

Regarding the estimates of current effective population size (the size of an ideal population with the same rate of genetic change as the real one; Waples, 2002), we obtained contrasting results, with higher population size

FIGURE 3 Maximum-likelihood tree of COI sequences for *Dendrophyllia* species and *Caryophyllia* species. The numbers indicate bootstrap values in percent, only for nodes supported by more higher than 80%. bootstraps The different symbols highlight the sequences obtained here for *Dendrophyllia* and *Caryophyllia* corals. The GenBank accession numbers are given at the end of the names. The tree has been rooted at the mid-point. See Table 1 for information on samples and Appendix S2 for the list of accession numbers.



for *D. cornigera* or *D. ramea* depending on the inclusion or not of variable population size in the model. These differences in the estimate of effective population size could indicate different demographic histories for the two species. The main difference was observed for *D. cornigera*, with a lower estimate of current effective size when variable population size was allowed: it would be interesting to test different demographic scenarios in this species to analyse the origin of this effect. At a genomic level, both with ancestral migration and strict isolation, there was a clear signal towards models including heterogeneous effective size: this can be the consequence of background selection, that is, the elimination of deleterious mutations in the genome (Charlesworth et al., 1997; De Jode et al., 2022). As previously mentioned, our analysis of speciation scenarios involved allopatric samples from the western Mediterranean for *D. cornigera* and the sample from the eastern Mediterranean for *D. ramea*. It would then be interesting to extend this study to samples from the same area, to take into account potential phylogeographic breaks across the Mediterranean Sea (Borsa et al., 1997).

5 | CONCLUSION AND PERSPECTIVES

Our results clearly confirm that *Dendrophyllia* DSC from Cyprus indeed correspond to *D. ramea*. This population appears original by its morphology and with potential genetic differences with other Mediterranean *D. ramea* populations. The geographical location of these populations in the eastern Mediterranean probably makes them well-isolated from other Mediterranean ones. The presence of *Dendrophyllia* corals in this area could also point to particular adaptation to this local environment. Along with the ecological importance of DSC ecosystems, these particularities underline the need for protection of these populations. Further genomic comparisons with other Mediterranean populations will be helpful to study the evolutionary history of *Dendrophyllia* in Cyprus.

ACKNOWLEDGEMENTS

Cyclamen funding: CYCLAMEN project, funded by TOTAL foundation (grant number BIO_2014_091_Juin_CS-8). This study has received funding from the European Union's Horizon 2020 research and innovation program under the project, grant agreement No 818123 (iAtlantic). This output reflects only the author's view, and the European Union cannot be held responsible for any use that may be made of the information contained therein. The project leading to this publication has received funding from European FEDER Fund under project 1166-39417. The project leading to this publication has received funding from Excellence

Initiative of Aix-Marseille University - A*MIDEX, a French “Investissements d’Avenir” programme. We thank Pascal Romans (Banyuls Oceanographic Observatory) and Christine Ferrier-Pagès (Centre Scientifique de Monaco) for sharing samples of *Dendrophyllia*. We especially acknowledge Helmut Zibrowius for his help in the study of these species (*Dendrophyllia* and *Caryophyllia*). We thank Sebastien Santini - CNRS/AMU IGS UMR7256 for the management of phylogeny.fr. Camille Roux, Jonathan Romiguier, and Christelle Fraïsse were of a great help for the analysis of speciation scenarios. We thank Christine Ferrier-Pagès from the Centre Scientifique de Monaco for providing some samples of Cyprus kept in aquaria. CO acknowledges the Hanse Wissenschaftskolleg – Institute for Advanced Study (Delmenhorst, Germany) for a senior fellowship obtained for the period October 2021–July 2022. We thank the SCUBA diver team of INSU/OSU Pytheas (Dorian Guillemain and Frédéric Zuberer) for their help during the fieldwork. We also acknowledge the staff of the “Cluster de calcul intensif HPC” Platform of the OSU Institut Pythéas (Aix-Marseille Université, INSU-CNRS) for providing the computing facilities. We are grateful to the Genotoul bioinformatics platform Toulouse Occitanie (Bioinfo Genotoul, <https://doi.org/10.15454/1.5572369328961167E12>) for providing help, computing, and storing resources. We acknowledge the use of the computing cluster of MNHN (Plateforme de Calcul Intensif et Algorithmique PCIA, Muséum national d’histoire naturelle, Centre national de la recherche scientifique, UAR 2700 2AD, CP 26, 57 rue Cuvier, F-75231 Paris Cedex 05, France).

ORCID

Didier Aurelle  <https://orcid.org/0000-0002-3922-7291>

REFERENCES

- Altuna, A., & Polisenio, A. (2019). 14 Taxonomy, genetics and biodiversity of Mediterranean Deep-Sea corals and cold-water corals. In C. Orejas & C. Jiménez (Eds.), *Mediterranean cold-water corals: Past, present and future: Coral reefs of the world* (Vol. 9). Springer. https://doi.org/10.1007/978-3-319-91608-8_14
- Angiolillo, M., Giusti, M., Rossi, L., & Tunesi, L. (2022). A *Dendrophyllia ramea* population in the Ionian Sea (Central Mediterranean Sea) threatened by anthropogenic impacts. *Frontiers in Marine Science*, 9, 838274. <https://doi.org/10.3389/fmars.2022.838274>
- Arnaud-Haond, S., Migliaccio, M., Diaz-Almela, E., Teixeira, S., Van De Vliet, M. S., Alberto, F., Procaccini, G., Duarte, C. M., & Serrao, E. A. (2007). Vicariance patterns in the Mediterranean Sea: East–west cleavage and low dispersal in the endemic seagrass *Posidonia oceanica*. *Journal of Biogeography*, 34(6), 963–976.
- Arrigoni, R., Kitano, Y. F., Stolarski, J., Hoeksema, B. W., Fukami, H., Stefani, F., Galli, P., Montano, S., Castoldi, E., & Benzoni, F. (2014). A phylogeny reconstruction of the Dendrophylliidae (Cnidaria, Scleractinia) based on molecular and micromorphological criteria, and its ecological implications. *Zoologica Scripta*, 43(6), 661–688.

- Aurelle, D., Pivotto, I. D., Malfant, M., Topcu, N. E., Masmoudi, M. B., Chaoui, L., Kara, H.M., Coelho, M.A.G., Castilho, R., Haguenaue, A. (2017). Fuzzy species limits in Mediterranean gorgonians (Cnidaria, Octocorallia): Inferences on speciation processes. *Zoologica Scripta*, 46(6), 767–778.
- Bigagli, E., Sghaier, Y., Sevin-Allouet, M.-A., Limam, A., Aguilar, R., & Samaha, Z. (2018). Deep Sea Lebanon Results of the 2016 Expedition Exploring Submarine Canyons Towards Deep-Sea Conservation in Lebanon Project Published by: IUCN Centre for Mediterranean Cooperation and IUCN Regional Office for West Asia -Lebanon. 2018. Project financed by: MAVA Foundation for Nature In Charge of the project at the Lebanese Ministry of Environment. doi:10.13140/RG.2.2.31723.28965
- Boavida, J., Becheler, R., Addamo, A. M., Sylvestre, F., & Arnaud-Haond, S. (2019). 31 Past, present and future connectivity of mediterranean cold-water corals: Patterns, drivers and fate in a technically and environmentally changing world. In C. Orejas & C. Jiménez (Eds.), *Mediterranean cold-water corals: Past, present and future. Coral reefs of the world* (Vol. 9). Springer. https://doi.org/10.1007/978-3-319-91608-8_31
- Boavida, J., Becheler, R., Choquet, M., Frank, N., Taviani, M., Bourillet, J.-F., Meistertzheim, A.-L., Grehan, A., Savini, A., & Arnaud-Haond, S. (2019). Out of the Mediterranean? Post-glacial colonization pathways varied among cold-water coral species. *Journal of Biogeography*, 46(5), 915–931.
- Bongaerts, P., Cooke, I. R., Ying, H., Wels, D., den Haan, S., Hernandez-Agreda, A., Brunner, C. A., Dove, S., Englebert, N., Eyal, G., Forêt, S., Grinblat, M., Hay, K. B., Harii, S., Hayward, D. C., Lin, Y., Mihaljevic, M., Moya, A., Muir, P., ... Hoegh-Guldberg, O. (2021). Morphological stasis masks ecologically divergent coral species on tropical reefs. *Current Biology*, 31(11), 2286–2298.e8. <https://doi.org/10.1016/j.cub.2021.03.028>
- Bongaerts, P., Riginos, C., Brunner, R., Englebert, N., Smith, S. R., & Hoegh-Guldberg, O. (2017). Deep reefs are not universal refuges: Reseeding potential varies among coral species. *Science Advances*, 3(2), e1602373.
- Borsa, P., Naciri, M., Bahri, L., Chikhi, L., Garcia de Leon, F., Kotoulas, G., & Bonhomme, F. (1997). Zoogéographie infra-spécifique de la mer Méditerranée: Analyse des données génétiques populationnelles sur seize espèces atlanto-méditerranéennes (Poissons et Invertébrés). *Vie et Milieu*, 47(4), 295–305.
- Bradbury, P. J., Zhang, Z., Kroon, D. E., Casstevens, T. M., Ramdoss, Y., & Buckler, E. S. (2007). TASSEL: Software for association mapping of complex traits in diverse samples. *Bioinformatics*, 23(19), 2633–2635.
- Buhl-Mortensen, P., Buhl-Mortensen, L., & Purser, A. (2017). Trophic ecology and habitat provision in cold-water coral ecosystems. In C. Orejas & C. Jiménez (Eds.), *Mediterranean cold-water corals: Past, present and future. Coral reefs of the world* (Vol. 9). Springer. https://doi.org/10.1007/978-3-319-21012-4_20
- Cabau, C., Escudié, F., Djari, A., Guiguen, Y., Bobe, J., & Klopp, C. (2017). Compacting and correcting trinity and oases RNA-Seq de novo assemblies. *PeerJ*, 5, e2988.
- Cairns, S. D. (2001). A generic revision and phylogenetic analysis of the Dendrophylliidae (Cnidaria: Scleractinia). *Smithsonian Contributions to Zoology*, 615, 1–75. <https://doi.org/10.5479/si.00810282.615>
- Cairns, S. D. (2007). Deep-water corals: An overview with special reference to diversity and distribution of deep-water scleractinian corals. *Bulletin of Marine Science*, 81(3), 311–322.
- Cairns, S. D., & Kitahara, M. V. (2012). An illustrated key to the genera and subgenera of the recent azooxanthellate Scleractinia (Cnidaria, Anthozoa), with an attached glossary. *ZooKeys*, 227, 1–47.
- Calderón, I., Garrabou, J., & Aurelle, D. (2006). Evaluation of the utility of COI and ITS markers as tools for population genetic studies of temperate gorgonians. *Journal of Experimental Marine Biology and Ecology*, 336(2), 184–197.
- Castelin, M., Lambourdiere, J., Boisselier, M.-C., Lozouet, P., Couloux, A., Cruaud, C., & Samadi, S. (2010). Hidden diversity and endemism on seamounts: Focus on poorly dispersive neogastropods. *Biological Journal of the Linnean Society*, 100(2), 420–438.
- Castellan, G., Angeletti, L., Taviani, M., & Montagna, P. (2019). The yellow coral *Dendrophyllia cornigera* in a warming ocean. *Frontiers in Marine Science*, 6, 692.
- Charlesworth, B., Nordborg, M., & Charlesworth, D. (1997). The effects of local selection, balanced polymorphism and background selection on equilibrium patterns of genetic diversity in subdivided populations. *Genetics Research*, 70(2), 155–174.
- Chen, Z., Grossfurthner, L., Loxterman, J. L., Masingale, J., Richardson, B. A., Seaborn, T., Smith, B., Waits, L. P., & Narum, S. R. (2022). Applying genomics in assisted migration under climate change: Framework, empirical applications, and case studies. *Evolutionary Applications*, 15(1), 3–21.
- Coelho, M. A., Pearson, G. A., Boavida, J. R., Paulo, D., Aurelle, D., Arnaud-Haond, S., Gómez-Gras, D., Bensoussan, N., López-Sendino, P., Cerrano, C., Kipson, S., Bakran-Petricioli, T., Ferretti, E., Linares, C., Garrabou, J., Serrão, E., & Ledoux, J. B. (2023). Not out of the Mediterranean: Atlantic populations of the gorgonian *Paramuricea clavata* are a separate sister species under further lineage diversification. *Ecology and Evolution*, 13(1), e9740.
- Csilléry, K., François, O., & Blum, M. G. B. (2012). abc: An R package for approximate Bayesian computation (ABC). *Methods in Ecology and Evolution*, 3(3), 475–479. <https://doi.org/10.1111/j.2041-210X.2011.00179.x>
- Dahl, M. P., Pereyra, R. T., Lundälv, T., & André, C. (2012). Fine-scale spatial genetic structure and clonal distribution of the cold-water coral *Lophelia pertusa*. *Coral Reefs*, 31(4), 1135–1148.
- Danecek, P., Auton, A., Abecasis, G., Albers, C. A., Banks, E., DePristo, M. A., Handsaker, R. E., Lunter, G., Marth, G. T., Sherry, S. T., McVean, G., Durbin, R., & 1000 Genomes Project Analysis Group. (2011). The variant call format and VCFtools. *Bioinformatics*, 27(15), 2156–2158.
- De Jode, A., Le Moan, A., Johannesson, K., Faria, R., Stankowski, S., Westram, A., Butlin, R. K., Rafajlović, M., & Fraïsse, C. (2022). Ten years of demographic modelling of divergence and speciation in the sea. *Evolutionary Applications*, 16, 542–559. <https://doi.org/10.1111/eva.13428>
- Edgar, R. C. (2004). MUSCLE: a multiple sequence alignment method with reduced time and space complexity. *BMC Bioinformatics*, 5(1), 1–19.
- El Ayari, T., Trigui El Menif, N., Hamer, B., Cahill, A. E., & Bierne, N. (2019). The hidden side of a major marine biogeographic boundary: A wide mosaic hybrid zone at the Atlantic–Mediterranean divide reveals the complex interaction between natural and genetic barriers in mussels. *Heredity*, 122(6), 770–784.
- Enrichetti, F., Toma, M., Bavestrello, G., Betti, F., Giusti, M., Canese, S., Moccia, D., Quarta, G., Calcagnile, L., Andaloro, F.,

- Greco, S., & Bo, M. (2023). Facies created by the yellow coral *Dendrophyllia cornigera* (Lamarck, 1816): Origin, substrate preferences and habitat complexity. *Deep Sea Research Part I: Oceanographic Research Papers*, 195, 104000.
- Erickson, K. L., Pentico, A., Quattrini, A. M., & McFadden, C. S. (2021). New approaches to species delimitation and population structure of anthozoans: Two case studies of octocorals using ultraconserved elements and exons. *Molecular Ecology Resources*, 21(1), 78–92.
- Evans, J., Knittweis, L., Borg, J. A., & Schembri, P. J. (2019). 3 Cold-water corals in the Mediterranean: A history of discovery. In C. Orejas & C. Jiménez (Eds.), *Mediterranean cold-water corals: Past, present and future. Coral reefs of the world* (Vol. 9). Springer. https://doi.org/10.1007/978-3-319-91608-8_3
- Fraïsse, C., Popovic, I., Mazoyer, C., Spataro, B., Delmotte, S., Romiguié, J., Loire, É., Simon, A., Galtier, N., Duret, L., Bierne, N., Vekemans, X., & Roux, C. (2021). DILS: Demographic inferences with linked selection by using ABC. *Molecular Ecology Resources*, 21(8), 2629–2644. <https://doi.org/10.1111/1755-0998.13323>
- Gayral, P., Melo-Ferreira, J., Glemin, S., Bierne, N., Carneiro, M., Nabholz, B., Lourenco, J. M., Alves, P. C., Ballenghien, M., Faivre, N., Belkhir, K., Cahais, V., Loire, É., Bernard, A., & Galtier, N. (2013). Reference-free population genomics from next-generation transcriptome data and the vertebrate–invertebrate gap. *PLoS Genetics*, 9(4), e1003457.
- Gélin, P., Postaire, B., Fauvelot, C., & Magalon, H. (2017). Reevaluating species number, distribution and endemism of the coral genus *Pocillopora* Lamarck, 1816 using species delimitation methods and microsatellites. *Molecular Phylogenetics and Evolution*, 109, 430–446.
- Goffredo, S., Arnone, S., & Zaccanti, F. (2002). Sexual reproduction in the Mediterranean solitary coral *Balanophyllia europaea* (Scleractinia, Dendrophylliidae). *Marine Ecology Progress Series*, 229, 83–94.
- Gori, A., Reynaud, S., Orejas, C., Gili, J.-M., & Ferrier-Pages, C. (2014). Physiological performance of the cold-water coral *Dendrophyllia cornigera* reveals its preference for temperate environments. *Coral Reefs*, 33(3), 665–674.
- Haguénauer, A., Zuberer, F., Ledoux, J.-B., & Aurelle, D. (2013). Adaptive abilities of the Mediterranean red coral *Corallium rubrum* in a heterogeneous and changing environment: From population to functional genetics. *Journal of Experimental Marine Biology and Ecology*, 449, 349–357. <https://doi.org/10.1016/j.jembe.2013.10.010>
- Henry, L.-A., & Roberts, J. M. (2017). Global biodiversity in cold-water coral reef ecosystems. In S. Rossi, L. Bramanti, A. Gori, & C. Orejas (Eds.), *Marine animal forests: The ecology of benthic biodiversity hotspots* (pp. 235–256). Springer.
- Hoang, D. T., Chernomor, O., Von Haeseler, A., Minh, B. Q., & Vinh, L. S. (2018). UFBoot2: Improving the ultrafast bootstrap approximation. *Molecular Biology and Evolution*, 35(2), 518–522.
- Huson, D. H., & Bryant, D. (2006). Application of phylogenetic networks in evolutionary studies. *Molecular Biology and Evolution*, 23(2), 254–267.
- Johnston, E. C., Forsman, Z. H., Flot, J. F., Schmidt-Roach, S., Pinzón, J. H., Knapp, I. S., & Toonen, R. J. (2017). A genomic glance through the fog of plasticity and diversification in *Pocillopora*. *Scientific Reports*, 7(1), 5991.
- Kalyaanamoorthy, S., Minh, B. Q., Wong, T. K. F., von Haeseler, A., & Jeremiin, L. S. (2017). ModelFinder: Fast model selection for accurate phylogenetic estimates. *Nature Methods*, 14(6), 587–589. <https://doi.org/10.1038/nmeth.4285>
- Kitahara, M. V., Fukami, H., Benzoni, F., & Huang, D. (2016). The new systematics of Scleractinia: Integrating molecular and morphological evidence. In *The Cnidaria, past, present and future* (pp. 41–59). Springer.
- Krijgsman, W., Hilgen, F. J., Raffi, I., Sierro, F. J., & Wilson, D. S. (1999). Chronology, causes and progression of the Messinian salinity crisis. *Nature*, 400(6745), 652–655.
- Li, H., & Durbin, R. (2009). Fast and accurate short read alignment with Burrows–Wheeler transform. *Bioinformatics*, 25(14), 1754–1760.
- Li, H., Handsaker, B., Wysoker, A., Fennell, T., Ruan, J., Homer, N., Marth, G., Abecasis, G., Durbin, R., & 1000 Genome Project Data Processing Subgroup. (2009). The sequence alignment/map format and SAMtools. *Bioinformatics*, 25(16), 2078–2079.
- Manzi, V., Gennari, R., Hilgen, F., Krijgsman, W., Lugli, S., Roveri, M., & Sierro, F. J. (2013). Age refinement of the Messinian salinity crisis onset in the Mediterranean. *Terra Nova*, 25(4), 315–322.
- Marti-Puig, P., Forsman, Z. H., Haverkort-Yeh, R. D., Knapp, I. S., Maragos, J. E., & Toonen, R. J. (2014). Extreme phenotypic polymorphism in the coral genus *Pocillopora*; micro-morphology corresponds to mitochondrial groups, while colony morphology does not. *Bulletin of Marine Science*, 90(1), 211–231. <https://doi.org/10.5343/bms.2012.1080>
- McFadden, C., Benayahu, Y., Pante, E., Thoma, J. N., Nevarez, P. A., & France, S. C. (2011). Limitations of mitochondrial gene barcoding in Octocorallia. *Molecular Ecology Resources*, 11(1), 19–31. <https://doi.org/10.1111/j.1755-0998.2010.02875.x>
- Muthye, V., Mackereth, C. D., Stewart, J. B., & Lavrov, D. V. (2022). Large dataset of octocoral mitochondrial genomes provides new insights into mt-mutS evolution and function. *DNA Repair*, 110, 103273.
- Nguyen, L.-T., Schmidt, H. A., von Haeseler, A., & Minh, B. Q. (2015). IQ-TREE: A fast and effective stochastic algorithm for estimating maximum-likelihood phylogenies. *Molecular Biology and Evolution*, 32(1), 268–274. <https://doi.org/10.1093/molbev/msu300>
- Okonechnikov, K., Golosova, O., Fursov, M., & Ugene Team. (2012). Unipro UGENE: A unified bioinformatics toolkit. *Bioinformatics*, 28(8), 1166–1167.
- Orejas, C., Gori, A., Jiménez, C., Rivera, J., Iacono, C. L., Hadjioannou, L., Andreou, V., & Petrou, A. (2017). First in situ documentation of a population of the coral *Dendrophyllia ramea* off Cyprus (Levantine Sea) and evidence of human impacts. *Galaxea, Journal of Coral Reef Studies*, 19(1), 15–16.
- Orejas, C., Gori, A., Jiménez, C., Rivera, J., Kamidis, N., Alhaja, R. A., & Iacono, C. L. (2019). Occurrence and distribution of the coral *Dendrophyllia ramea* in Cyprus insular shelf: Environmental setting and anthropogenic impacts. *Deep Sea Research Part II: Topical Studies in Oceanography*, 164, 190–205.
- Orejas, C., & Jiménez, C. (2019). *Mediterranean cold-water corals: Past, present and future: Understanding the Deep-Sea realms of coral* (Vol. 9). Springer.
- Orejas, C., Jiménez, C., Gori, A., Rivera, J., Iacono, C. L., Aurelle, D., ... Achilleos, K. (2019). 23 Corals of Aphrodite: *Dendrophyllia ramea* populations of Cyprus. In C. Orejas & C. Jiménez (Eds.), *Mediterranean cold-water corals: Past, present and future. Coral reefs of the world* (Vol. 9). Springer. https://doi.org/10.1007/978-3-319-91608-8_23
- Oury, N., Noël, C., Mona, S., Aurelle, D., & Magalon, H. (2023). From genomics to integrative species delimitation? The case study of

- the Indo-Pacific *Pocillopora* corals. *Molecular Phylogenetics and Evolution*, 184, 107803.
- Pante, E., Puillandre, N., Viricel, A., Arnaud-Haond, S., Aurelle, D., Castelin, M., Chenuil, A., Destombe, C., Forcioli, D., Valero, M., Viard, F., & Samadi, S. (2015). Species are hypotheses: Avoid connectivity assessments based on pillars of sand. *Molecular Ecology*, 24(3), 525–544.
- Pante, E., & Simon-Bouhet, B. (2013). Marmap: A package for importing, plotting and analyzing bathymetric and topographic data in R. *PLoS One*, 8, e73051.
- Patarnello, T., Volckaert, F. A., & Castilho, R. (2007). Pillars of Hercules: Is the Atlantic–Mediterranean transition a phylogeographical break? *Molecular Ecology*, 16(21), 4426–4444.
- Paz-García, D. A., Aldana-Moreno, A., Cabral-Tena, R. A., García-De-León, F. J., Hellberg, M. E., & Balart, E. F. (2015). Morphological variation and different branch modularity across contrasting flow conditions in dominant *Pocillopora* reef-building corals. *Oecologia*, 178(1), 207–218.
- Pratlong, M., Haguenaer, A., Brener, K., Mitta, G., Toulza, E., Garrabou, J., Bensoussan, N., Pontarotti, P., & Aurelle, D. (2021). Separate the wheat from the chaff: Genomic scan for local adaptation in the red coral *Corallium rubrum*. *Peer Community Journal*, 1, e31. <https://doi.org/10.24072/pcjournal.12>
- Pudlo, P., Marin, J.-M., Estoup, A., Cornuet, J.-M., Gautier, M., & Robert, C. P. (2016). Reliable ABC model choice via random forests. *Bioinformatics*, 32(6), 859–866.
- Quattrini, A. M., Herrera, S., Adams, J. M., Grinyó, J., Allcock, A. L., Shuler, A., Wirshing, H. H., Cordes, E. E., & McFadden, C. S. (2022). Phylogeography of Paramuricea: The role of depth and water mass in the evolution and distribution of Deep-Sea corals. *Frontiers in Marine Science*, 9, 849402. <https://doi.org/10.3389/fmars.2022.849402>
- Quek, Z. R., Jain, S. S., Richards, Z. T., Arrigoni, R., Benzoni, F., Hoeksema, B. W., Carvajl, J. I., Wilson, N. G., Baird, A. H., Kitahara, M. V., Seiblit, I. G. L., Vaga, C. F., & Huang, D. (2023). A hybrid-capture approach to reconstruct the phylogeny of Scleractinia (Cnidaria: Hexacorallia). *Molecular Phylogenetics and Evolution*, 107867, 107867.
- Rambaut, A. (2006). *FigTREE v1.4*. University of Edinburgh.
- Roberts, J. M., Wheeler, A., Freiwald, A., & Cairns, S. (2009). *Cold-water corals: The biology and geology of deep-sea coral habitats*. Cambridge University Press.
- Rouchy, J. M., & Caruso, A. (2006). The Messinian salinity crisis in the Mediterranean basin: A reassessment of the data and an integrated scenario. *Sedimentary Geology*, 188, 35–67.
- Roux, C., Fraïsse, C., Romiguier, J., Anciaux, Y., Galtier, N., & Bierne, N. (2016). Shedding light on the Grey zone of speciation along a continuum of genomic divergence. *PLoS Biology*, 14(12), e2000234. <https://doi.org/10.1371/journal.pbio.2000234>
- Rueda, J. L., Urra, J., Aguilar, R., Angeletti, L., Bo, M., Garcia-Ruiz, C., González-Duarte, M. M., López, E., Madurell, T., Maldonado, M., Mateo-Ramírez, Á., Megina, C., Moreira, J., Moya, F., Ramalho, L. V., Rosso, A., Sitjà, C., & Marco Taviani, M. (2019). 29 Cold-water coral associated Fauna in the Mediterranean Sea and adjacent areas. In C. Orejas & C. Jiménez (Eds.), *Mediterranean cold-water corals: Past, present and future. Coral reefs of the world* (Vol. 9). Springer.
- Salomidi, M., Zibrowius, H., Issaris, Y., & Milionis, K. (2010). *Dendrophyllia* in Greek waters, Mediterranean Sea, with the first record of *D. ramea* (Cnidaria, Scleractinia) from the area. *Mediterranean Marine Science*, 11(1), 189–194.
- Salvati, E., Giusti, M., Canese, S., Esposito, V., Romeo, T., Andaloro, F., Bo, M., & Tunesi, L. (2021). New contribution on the distribution and ecology of *Dendrophyllia ramea* (Linnaeus, 1758): Abundance hotspots off north-eastern Sicilian waters. *Aquatic Conservation: Marine and Freshwater Ecosystems*, 31(6), 1322–1333.
- Schulz, M. H., Zerbino, D. R., Vingron, M., & Birney, E. (2012). Oases: Robust de novo RNA-seq assembly across the dynamic range of expression levels. *Bioinformatics*, 28(8), 1086–1092.
- Shearer, T. L., van Oppen, M. J., Romano, S. L., & Worheide, G. (2002). Slow mitochondrial DNA sequence evolution in the Anthozoa (Cnidaria). *Molecular Ecology*, 11(12), 2475–2487.
- Taviani, M., Angeletti, L., Canese, S., Cannas, R., Cardone, F., Cau, A., Follesa, M. C., Marchese, F., Montagna, P., & Tessarolo, C. (2017). The “Sardinian cold-water coral province” in the context of the Mediterranean coral ecosystems. *Deep Sea Research Part II: Topical Studies in Oceanography*, 145, 61–78.
- Tsagkogeorga, G., Cahais, V., & Galtier, N. (2012). The population genomics of a fast evolver: High levels of diversity, functional constraint, and molecular adaptation in the tunicate *Ciona intestinalis*. *Genome Biology and Evolution*, 4(8), 852–861.
- Vertino, A., Stolarski, J., Bosellini, F. R., & Taviani, M. (2014). Mediterranean corals through time: From Miocene to present. In S. Goffredo & Z. Dubinsky (Eds.), *The Mediterranean Sea: Its history and present challenges*. Springer Science+Business Media Dordrecht.
- Vollmer, S., & Palumbi, S. R. (2004). Testing the utility of internally transcribed spacer sequences in coral phylogenetics. *Molecular Ecology*, 13(9), 2763–2772.
- Waples, R. S. (2002). Definition and estimation of effective population size in the conservation of endangered species. In S. R. Beissinger & D. R. McCullough (Eds.), *Population Viability Analysis* (pp. 147–168). University of Chicago Press.
- Zibrowius, H. (1971). Etude quantitative et qualitative des salissures biologiques de plaques expérimentales immergées en pleine eau. 3. *Caryophyllia smithii* Stokes & Broderip et considérations sur d'autres espèces de madréporaires. *Téthys*, 2(3), 615–632.
- Zibrowius, H. (1980). *Les Scléractiniaires de la Méditerranée et de l'Atlantique nord-oriental*. Mémoires de l'Institut océanographique.

SUPPORTING INFORMATION

Additional supporting information can be found online in the Supporting Information section at the end of this article.

How to cite this article: Aurelle, D., Haguenaer, A., Blaise, C., Reynes, L., Arnaud-Haond, S., Boavida, J., Cabau, C., Klopp, C., Lundalv, T., Noûs, C., Sartoretto, S., Wienberg, C., Jiménez, C. E., & Orejas, C. (2023). On the specific status of eastern Mediterranean *Dendrophyllia* corals (Cnidaria, Anthozoa): Genetic characterization and speciation scenarios. *Zoologica Scripta*, 00, 1–13. <https://doi.org/10.1111/zsc.12643>