



HAL
open science

Development of New Models of Oral Mucosa to Investigate the Impact of the Structure of Transmembrane Mucin-1 on the Mucosal Pellicle Formation and Its Physicochemical Properties

Clément Nivet, Irma Custovic, Laure Avoscan, Floris Bikker, Aline Bonnotte, Eric Bourillot, Loïc Briand, Hélène Brignot, Jean-Marie Heydel, Noémie Herrmann, et al.

► To cite this version:

Clément Nivet, Irma Custovic, Laure Avoscan, Floris Bikker, Aline Bonnotte, et al.. Development of New Models of Oral Mucosa to Investigate the Impact of the Structure of Transmembrane Mucin-1 on the Mucosal Pellicle Formation and Its Physicochemical Properties. *Biomedicines*, 2024, 12 (1), pp.139. 10.3390/biomedicines12010139 . hal-04395339

HAL Id: hal-04395339

<https://hal.inrae.fr/hal-04395339>

Submitted on 12 Feb 2024

HAL is a multi-disciplinary open access archive for the deposit and dissemination of scientific research documents, whether they are published or not. The documents may come from teaching and research institutions in France or abroad, or from public or private research centers.

L'archive ouverte pluridisciplinaire **HAL**, est destinée au dépôt et à la diffusion de documents scientifiques de niveau recherche, publiés ou non, émanant des établissements d'enseignement et de recherche français ou étrangers, des laboratoires publics ou privés.



Distributed under a Creative Commons Attribution 4.0 International License



Article

Development of New Models of Oral Mucosa to Investigate the Impact of the Structure of Transmembrane Mucin-1 on the Mucosal Pellicle Formation and Its Physicochemical Properties

Clément Nivet¹, Irma Custovic², Laure Avoscan³, Floris J. Bikker⁴ , Aline Bonnotte³, Eric Bourillot², Loïc Briand¹, Hélène Brignot¹ , Jean-Marie Heydel¹ , Noémie Herrmann¹, Mélanie Lelièvre¹, Eric Lesniewska² , Fabrice Neiers¹ , Olivier Piétrement² , Mathieu Schwartz¹ , Christine Belloir¹ and Francis Canon^{1,*}

¹ Center for Taste and Feeding Behaviour (CSGA), UMR1324 INRAE, Institut Agro Dijon, Université de Bourgogne, UMR6265 CNRS, 21000 Dijon, France; clement.nivet@inrae.fr (C.N.); loic.briand@inrae.fr (L.B.); helene.brignot@inrae.fr (H.B.); jean-marie.heydel@u-bourgogne.fr (J.-M.H.); noemie.herrmann@inrae.fr (N.H.); melanie.lelievre@inrae.fr (M.L.); fabrice.neiers@u-bourgogne.fr (F.N.); mathieu.schwartz@inrae.fr (M.S.); christine.belloir@inrae.fr (C.B.)

² Institut Carnot de Bourgogne (ICB), UMR CNRS 6303, University of Bourgogne, 21000 Dijon, France; irma.custovic@u-bourgogne.fr (I.C.); eric.bourillot@u-bourgogne.fr (E.B.); eric.lesniewska@u-bourgogne.fr (E.L.); olivier.pietrement@u-bourgogne.fr (O.P.)

³ Agroécologie, UMR1347 INRAE, ERL CNRS 6300, DimaCell Platform, Center of Microscopy INRAE, University of Bourgogne, 21000 Dijon, France; laure.avoscan@inrae.fr (L.A.); aline.bonnotte@inrae.fr (A.B.)

⁴ Department of Oral Biochemistry, Academic Centre for Dentistry Amsterdam, University of Amsterdam and VU University Amsterdam, 1081 LA Amsterdam, The Netherlands; f.bikker@acta.nl

* Correspondence: francis.canon@inrae.fr; Tel.: +33-3-8065-3529



Citation: Nivet, C.; Custovic, I.; Avoscan, L.; Bikker, F.J.; Bonnotte, A.; Bourillot, E.; Briand, L.; Brignot, H.; Heydel, J.-M.; Herrmann, N.; et al. Development of New Models of Oral Mucosa to Investigate the Impact of the Structure of Transmembrane Mucin-1 on the Mucosal Pellicle Formation and Its Physicochemical Properties. *Biomedicines* **2024**, *12*, 139. <https://doi.org/10.3390/biomedicines12010139>

Academic Editors: Fernando Capela e Silva, Elsa Lamy and Paula Midori Castelo

Received: 3 August 2023

Revised: 21 December 2023

Accepted: 25 December 2023

Published: 9 January 2024



Copyright: © 2024 by the authors. Licensee MDPI, Basel, Switzerland. This article is an open access article distributed under the terms and conditions of the Creative Commons Attribution (CC BY) license (<https://creativecommons.org/licenses/by/4.0/>).

Abstract: The mucosal pellicle (MP) is a biological film protecting the oral mucosa. It is composed of bounded salivary proteins and transmembrane mucin MUC1 expressed by oral epithelial cells. Previous research indicates that MUC1 expression enhances the binding of the main salivary protein forming the MP, MUC5B. This study investigated the influence of MUC1 structure on MP formation. A TR146 cell line, which does not express MUC1 natively, was stably transfected with genes coding for three MUC1 isoforms differing in the structure of the two main extracellular domains: the VNTR domain, exhibiting a variable number of tandem repeats, and the SEA domain, maintaining the two bound subunits of MUC1. Semi-quantification of MUC1 using dot blot chemiluminescence showed comparable expression levels in all transfected cell lines. Semi-quantification of MUC5B by immunostaining after incubation with saliva revealed that MUC1 expression significantly increased MUC5B adsorption. Neither the VNTR domain nor the SEA domain was influenced MUC5B anchoring, suggesting the key role of the MUC1 N-terminal domain. AFM-IR nanospectroscopy revealed discernible shifts indicative of changes in the chemical properties at the cell surface due to the expression of the MUC1 isoform. Furthermore, the observed chemical shifts suggest the involvement of hydrophobic effects in the interaction between MUC1 and salivary proteins.

Keywords: MUC1; mucosal pellicle; MUC5B; salivary protein interactions; oral mucosa; AFM-IR

1. Introduction

The oral mucosa roughly consists of two main layers; the lower, inner lamina propria (made of connective tissue) and the surface stratified squamous epithelium. Oral epithelia can be classified into keratinized epithelium with a inflexible and tough surface, and non-keratinized epithelium with an elastic surface [1]. Keratinized epithelium is found on the hard palate and the gingiva, while non-keratinized epithelium can be found on lining mucosa, the soft palate, and buccal surfaces. Lining mucosa represents approximately 60% of the surface of oral mucosa [2]. Oral mucosae are subjected to numerous mechanical stresses (such as stretching, shearing, and friction forces), during orofacial movements,

which include mastication, deglutition, speech, and oral care. To limit such friction strains, lubrication is ensured by a layer of salivary proteins called the mucosal pellicle (MP), tightly anchored to the epithelium, and a mobile salivary film. The MP is thought to contribute to moisture retention, lubrication, and protection against microbial colonization. It could also play a role in food flavour, the perception of astringency [3–5], and aroma persistence [6,7]. Lubrication is further ensured by a mobile salivary film (or residual fluid), defined as free saliva, which is retained on oral mucosa after deglutition. The thickness of the mobile salivary film varies, ranging from 70 to 100 μm [8] depending on the type of surfaces in the mouth [9]. Recent research reported that the salivary film thickness showed considerable differences based on its intra-oral location. For example, the salivary film at the anterior tongue and floor of the mouth was thickest, and the film at the anterior palate was thinnest. Similarly, MUC5B levels were highest at the anterior part of the tongue and lowest at the anterior palate [10].

The MP results from a specific anchoring of salivary proteins at the mucosal epithelial cell surface. The main salivary proteins forming the MP are the mucins MUC5B and MUC7 as well as secretory immunoglobulin A (sIgA) [11–13], together with low concentrations of numerous small proteins, such as secreted cystatins; histatins; and proline-rich proteins (PRP) [14]; and enzymes, such as amylases; carbonic anhydrase VI (CA VI); lysozyme; and glutathione transferases [15]. Currently, the mechanisms of MP formation and protein interactions are not fully understood. It has been proposed that hydrophobic effects play a prominent role in the adsorption of some salivary proteins at the surface of the epithelial cells [14]. Similarly, cross-linking between salivary proteins, facilitated by a catalytic reaction mediated by the enzyme transglutaminase (TGM), is involved in MP formation [16]. The adhesion of salivary proteins can also occur through protein–protein interactions. For instance, MUC7 and sIgA have been reported to form supramolecular complexes [17,18], and recent studies have shown that the expression of MUC1 by epithelial cells increases the anchoring of salivary proteins, especially MUC5B [19,20]. These results agree with hypotheses proposing that MUC1 plays a prominent role in salivary protein anchorage and MP formation [14,16,21]. However, information on the structural domains of MUC1 involved in the interaction is scarce. MUC1 is a dimeric transmembrane glycoprotein expressed by oral epithelial cells at their surface [22]. MUC1 consists of two subunits, α and β , linked together by non-covalent bonds located within a well-folded domain called the sea urchin sperm protein (SEA) domain [23–25]. The α subunit, which is exclusively extracellular, has a domain with a variable number of tandem repeats (VNTR domain) of a consensus sequence of 20 amino acids, ranging from 20 to 120 repeats in the northern European population [26,27]. This domain, rich in serine and threonine amino acids, is the site of extensive O-glycosylation, which contributes to the lubricating properties of MUC1 [28]. The negative charges of sialic acid residues at the extremity of O-glycosylation may also participate in the establishment of electrostatic interactions with salivary proteins. Thus, the aim of the present study was to investigate the impact of both the SEA and the VNTR domains of MUC1 on the anchoring of the salivary protein MUC5B and the formation of the MP.

The TR146 cell line, which does not express MUC1 [20], was stably transfected by three different isoforms of MUC1. These isoforms present a VNTR domain constituted of 20 repetitions, and they differ based on the structure of the SEA domain and the presence or not of enhanced green fluorescent protein (eGFP). The previously developed TR146-MUC1/Y-LSP cell line, which does not present the VNTR domain and has a truncated and non-cleavable SEA domain, was compared to these new cell lines.

2. Materials and Methods

2.1. MUC1 Gene Design and Construction

The amino acid sequence of human MUC1 was obtained from the online UniProtKB database (accession P15941) and used as a template to construct, *in silico*, 3 genes encoding different isoforms of MUC1. Figure 1 presents the structural differences between the differ-

ent isoforms of MUC1. The first gene, named *MUC1/20VNTR*, encodes the MUC1 isoform 1, which consists of 2 subunits: the α -subunits, in the N-terminal domain, and β -subunit, in the C-terminal domain. The 2 subunits are connected at the level of the SEA domain and its autoproteolysis cleavage site. In addition, isoform 1 has a variable number of tandem repeats (VNTR domain) with 20 identical repeats of 20 amino acids (PDTRPAPGSTAPPAHGVTS) on the α -subunit. The second gene, called *MUC1/20VNTR-NC*, encodes a second isoform, similar to isoform 1 but with the autoproteolysis cleavage site sequence of the SEA domain removed (NC). Finally, the third gene, *MUC1/20VNTR-EGFP*, encodes an isoform similar to isoform 1 but with an additional GFP sequence on the N-terminus upstream of the VNTR domain. To increase MUC1 protein expression, the Max sequence (QBI SP163 translational enhancer belonging to the pcDNA4/HisMax vector from Life Technologies Corporation (Thermo Fisher Scientific, Waltham, MA, USA) was introduced before the start codon. To allow detection and purification, the FLAG epitope tag (DYKDDDDK) was added to the C-terminus of each MUC1 construct. The 3 genes were synthesized commercially (Genewiz, Leipzig, Germany) and codon were optimized for mammalian cell expression. The synthetic cDNAs were subcloned into HindIII and NotI restriction sites of the pcDNA4 expression vector (Life Technologies, Waltham, MA, USA). The resulting expression plasmids, pcDNA4/Max-MUC1/20VNTR, pcDNA4/Max-MUC1/20VNTR-NC, and pcDNA4/Max-MUC1/20VNTR-EGFP, were transformed using electroporation and amplified in *Escherichia coli* ElectroMAX Stbl4 cells (Invitrogen, Waltham, MA, USA). Plasmid purifications were carried out using the QIAGEN Plasmid Plus Maxi kit (Qiagen, Courtaboeuf, France). To validate the sequence of amplified plasmid, Sanger sequencing (Genewiz) and alignments with the CLC Viewer software (CLC 23.0.5, QIAGEN Aarhus Prismet, Silkeborgvej 28000 Aarhus C Denmark) were performed to confirm the MUC1 isoforms' sequences and differences.

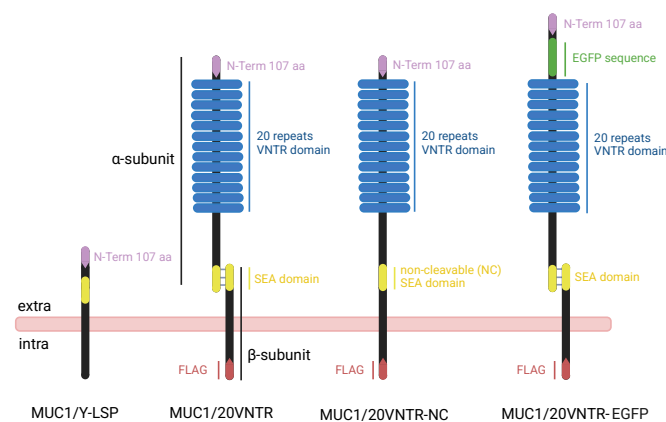


Figure 1. Schematic representation of the structure and major domains of the different isoforms encoded by the *MUC1/20VNTR*, *MUC1/20VNTR-NC*, and *MUC1/20VNTR-EGFP* constructs. Comparison with the structure of the truncated MUC1 isoform (*MUC1/Y-LSP*).

2.2. Preparation of the Stable MUC1 TR146 Cell Lines

The human TR146 epithelial cell line, commonly used as a model of the buccal mucosa [29] (Rupniak et al., 1985), was obtained from the European Collection of Cell Cultures (ECACC, Salisbury, Wiltshire, UK). Cells were grown in DMEM/F12-GlutaMAX medium from Gibco (Carlsbad, CA, USA) (1:1, *v/v*) supplemented with 10% heat-inactivated foetal bovine serum (FBS), penicillin (100 units/mL), and streptomycin 100 μ g/mL. The cells were cultured in T75 flasks and kept at 37 °C in a humidified atmosphere containing 7.5% CO₂. The medium was changed every 2 days and cells were subcultured at confluency using Trypsin-EDTA (0.05%). The TR146/MUC1 cell line stably transfected with isoform Y-LSP, as previously described [5,6,19,20], was also used as a control for the cellular model of the oral epithelium. For the Y-LSP model, 2.5 mg/mL geneticin G418 (Gibco) was added to the culture media.

To perform transfection, TR146 cells were seeded at a concentration of 0.22×10^6 cells/mL in T25 flasks and reached 80% confluence at 48 h. Then, the pcDNA4/Max-MUC1/20VNTR, pcDNA4/Max-MUC1/20VNTR-NC, and pcDNA4/Max-EGFP/MUC1-20VNTR-EGFP plasmids were linearised using 260 U of the restriction enzyme SSPI (stock solution: 10 U/ μ L (ThermoFisher, Waltham, MA, USA)), and individually transfected with Fugene HD (Promega, Charbonnieres Les Bains, France) with a reagent:DNA ratio of 3:1 (26 μ L reagent:100 ng DNA) following the manufacturer's instructions. After 24 h, transfected cells from each T25 were trypsinized, diluted, and seeded onto 100 mm cell culture dishes. After an additional 24 h of incubation, cells were subjected to antibiotic selection for 2–3 weeks using media supplemented with 25 μ g/mL zeocin. The surviving cell colonies were subcloned using cloning rings. A total of 15 clones were expanded, stepwise, in 24-well plates, T25 flasks, and T75 flasks, and finally cryopreserved in liquid nitrogen (6 clones for isoform 1, 5 clones for isoform 2, and 4 clones for isoform 3). In parallel, each clone was screened to select the best stable cell line, according to 3 distinct criteria: the level of expression of MUC1, the addressing of the protein to the membrane, and its capacity to form the MP by anchoring MUC5B.

2.3. Saliva Collection and Application

Saliva was collected from 17 different subjects who reported to be in good oral health. Written informed consent was obtained from the participants. They were asked not to smoke, eat, or drink 2 h before the collection started. The collection of saliva lasted approximately 1 h during which subjects spat the saliva that naturally accumulated in their mouths into a plastic bottle without stimulation. All samples were then pooled and centrifuged for 20 min at $15,000 \times g$ and 4 °C to remove any food residue and bacteria. Aliquots of 4 mL of clarified saliva were prepared and frozen at -80 °C until use. When needed for cell treatment, the salivary sample was thawed on ice, diluted 1:1 in medium, and applied to cell culture for 2 h at 37 °C under humidified atmosphere containing 7.5% CO₂ to create a salivary structure that mimics the oral MP. Then, the saliva solution was removed, and the cells were gently rinsed once with PBS to remove unbound proteins.

2.4. Fluorescent Immunostaining of MUC1, Plasma Membrane, and MUC5B

For immunostaining, TR146 (parental cells), TR146-MUC1/Y-LSP, and all TR146-MUC1 stable cell lines were seeded at 0.22×10^6 cells/mL on 8-well culture plates (Corning Inc., Glendale, AZ, USA, 354108) and precoated with Corning Cell-Tak adhesive (Corning Inc., 354240) to reach 80–90% confluence in 48 h. For parental TR146 and all TR146-MUC1 stable cell lines, immunostaining of MUC1 was performed without a salivary pellicle, while immunostaining of MUC5B was performed with and without a salivary pellicle. To visualize the plasma membrane, cells were washed with pre-cooled PBS at 4 °C and incubated with biotin-conjugated concanavalin A, which binds to cell-surface glycoproteins, at 20 μ g/mL (Merck, C2272-2MG) for 1 h at 4 °C. After PBS washing, cells were fixed using cold methanol–acetone (1:1, *v/v*) for a duration of 20 min, then fixed using cold 100% methanol for a duration of 20 min and washed again with PBS. To reduce non-specific binding, slides were blocked with 5% goat serum and 0.05% skimmed milk diluted in PBS for 1 h at room temperature (RT). For membrane staining, cells were incubated with Alexa Fluor 568 streptavidin conjugate (Life technologies, S11226) and diluted at 1:200 in PBS (final concentration 5 mM) for 1 h at RT. For MUC1 immunostaining and confocal analysis, we used the monoclonal mouse anti-FLAG M2 primary antibody (Sigma-Aldrich, Darmstadt, Germany, F1804) diluted at 1:250 in PBS (final concentration 4 mM) for 1 h at RT, followed by the secondary antibody Alexa Fluor 405 goat anti-mouse IgG (Life technologies, A48255) diluted at 1:2000 (final concentration 0.5 mM). For MUC5B immunodetection in epi-fluorescence, we used a mouse monoclonal anti-MUC5B antibody F2 [30] (Provided by Dr Floris Bikker, Free University of Amsterdam) diluted at 1:10 in PBS for 1 h, followed by the secondary antibody and then the Alexa Fluor 594 goat anti-mouse antibody (Life technologies, A32742) diluted at 1:400 in PBS (final concentration 2.5 mM). Finally, cells

were washed 5 times with PBS, the chambers were removed from the slides, and the coverslips were placed with mounting medium Invitrogen ProLong Glass Antifade reagent with or without DAPI (Molecular Probes, Eugene, OR, USA, P36980 or P36935).

For MUC5B immunodetection, fluorescence was observed with a Nikon Eclipse E600 microscope (Nikon Instruments) equipped with UV-2A (excitation 330–380 nm, emission 400 nm) and G-2A (excitation 510–560 nm, emission 575 nm) filters. Images were acquired using a DS-Ri2 digital camera and analysed with the software NIS-Elements Basic Research (Version 4.30, Nikon Instruments, Melville, New York, NY, USA). For co-expression of MUC1 into the plasma membrane, images were acquired using a confocal laser scanning microscope (Leica TCS SP8) equipped with a 63 × objective lens (DimaCell platform, University of Burgundy, Dijon, France). Semi-quantification of MUC5B retained on the cell surface was performed using IgorPro 9 software (Version 9.05, WaveMetrics, Tigard, OR, USA) ($n = 30$ images for each MUC1 isoform), and statistical analysis was tested via Student's *t*-test to validate differences between TR146 parental cells and TR146-MUC1 isoforms.

2.5. Semi-Quantification of the MUC1 via Dot Blot Analyses

For MUC1 expression, each clone was amplified in T75 flasks and when cells reached 90% confluence, they were trypsinized, centrifuged at $1000 \times g$, and the cell pellets were kept frozen at -80 °C until use. Cell pellets were lysed with an NP40 lysis buffer (Invitrogen) supplemented with mammalian protease inhibitor cocktail and RNase blocker (1/100th) solution. To improve protein extraction, the homogenate was further disrupted with a tissue lyser (TissueLyser, Qiagen, Hilden, Germany) and 3 mm tungsten beads (3 min agitation at 30 s^{-1} frequency), incubated for 1 h at 4 °C under strong shaking, and then centrifuged at $25,000 \times g$ for 20 min at 4 °C. Proteins were quantified in the resulting supernatant using the DC protein assay kit II (Bio-Rad, 5000112, Hercules, CA, USA). For the dot blot analysis, 3 replicates of lysate were produced and analysed for each clone. For each sample, 6 drops of lysate containing 3 µg of protein were deposited on 0.2 µm polyvinylidene difluoride (PVDF) membranes (Bio-Rad) and left to dry for around 30 min. Then, non-specific bindings were blocked in 0.3% skimmed milk. For MUC1 detection, we used the primary antibodies MUC1 mouse monoclonal antibody (OriGene Technologies, TA800838) or FLAG M2 mouse monoclonal antibody (Sigma, F1804), both diluted at 1:200 in PBS, and the secondary antibody goat anti-mouse IgG antibody HRP conjugated (Fisher, A24512), diluted 1:2000 in TBST. Enhanced chemiluminescence was used for the detection of HRP conjugates (1705061, BIO-RAD, 92430 Marnes-la-Coquette, France; BIO-RAD Clarity Western ECL Blotting kit used according to the manufacturer's instructions). Images were acquired using the ChemiDoc MP Imaging System (Bio-Rad), with data acquisition via a camera (Bio-Rad), and data were analysed with ImageLab software (Version 3.0.1., Bio-Rad). The median values of technical replicate were calculated for each biological replicate and the difference between TR146 parental cells and TR146/MUC1 isoforms was evaluated via one-way ANOVA. When a significant difference was observed ($p < 0.05$), the means were compared using a Tukey pairwise comparison test (significance level set at 5%).

MUC5B immunostaining was observed with a NIKON Eclipse E600 microscope (Nikon Instruments, Melville, New York, NY, USA) after excitation with a high-pressure mercury-vapor lamp. Images were acquired using a Nikon Dxm1200C camera. The Nikon NIS-Elements BR software (Version 4.30) was used for data acquisition. Three images, taken of different areas of the sample, were acquired for each of the triplicates. Images of MUC5B immunostained samples were analysed using IgorPro 9 software (Version 9.05, WaveMetrics, Tigard, OR, USA). The sum of red layer intensity of pixels was determined for each picture. The effect of cell lines on MUC5B anchoring was evaluated via one-way ANOVA. When a significant difference was observed ($p < 0.05$), the means were compared using a Tukey pairwise comparison test (significance level set at 5%).

2.6. Immuno-Scanning Electron Microscopy (SEM) and Atomic Force Microscopy-Based Infrared Spectroscopy (AFM-IR)

Cells were seeded on 10 mm coverslips precoated with Corning Cell-Tak adhesive (354240 Corning Inc., Glendale, AZ, USA) and, as previously described, incubated with clarified saliva to reconstitute the MP. For SEM, cells were fixed for 30 min at RT with 4% paraformaldehyde diluted in PBS. After 2 washes, cells were incubated for 10 min in 50 mM NH_4Cl diluted in PBS and washed again. Nonspecific binding sites were blocked with 0.3% skimmed milk and 5% goat serum for 15 min at RT. After 2 gentle washes, cells were incubated with FLAG M2 mouse antibody diluted at 1:25 in PBS for 1 h at RT, followed by incubation with a goat anti-mouse secondary antibody conjugated with 15 nm colloidal gold particles (Aurion, Wageningen, The Netherlands) diluted at 1:20 in PBS for 1 h at RT with shaking. The cells were fixed again with 1% glutaraldehyde for 5 min. Finally, the samples were dehydrated in successive ethanol baths of increasing concentrations ranging from 30% to 100% ethanol, for 20 min each. The samples were dried via critical point drying (CPD) using a Leica EM CPD030 (Leica, Wetzlar, Germany). Samples were coated with approximately 6 nm of carbon using a Quorum Q150T S Plus vacuum evaporator (QuorumTech, Lewes, UK) and observed with a Hitachi SU8230 scanning electron microscope equipped with a backscattered electron detector (Hitachi HighTech, 47807 Krefeld, Germany). The observations were carried out under an electron accelerating voltage of 5 kV at a working distance of 8 mm.

For AFM-IR analysis, cells were fixed with 1% glutaraldehyde for 5 min on CaF_2 coverslips (Crystal GmbH, Berlin, Germany), followed by dehydration in successive ethanol baths of increasing concentrations ranging from 30% to 100% ethanol, for 20 min each.

The AFM-IR technique simultaneously provides nanoscale topography imaging offered by AFM, and chemical information retrieved via IR spectroscopy [31] in the range of 730 cm^{-1} to 1850 cm^{-1} . As the applications of conventional infrared spectroscopy (IR) for nanoscopic analysis are constrained due to the low spatial-resolution performance set by the optical diffraction limit, AFM-IR achieves this goal by using the AFM probe to sense localised photothermal expansion induced by IR absorption [32]. This creates a force impulse on the tip of the cantilever causing the oscillation of the AFM cantilever probe [32,33]. By measuring the AFM probe oscillation to IR absorption, it is possible to acquire IR spectra at the nanoscale regions of the sample. In addition, by fixing the IR laser at specific wavelengths, AFM-IR measures absorption as a function of position across the sample by providing absorption maps which monitor nanoscale variation in chemical species accompanied by IR spectrum [34–36]. The nanospectroscopic characterization of TR146 and TR146-MUC1/20VNTR cell lines was conducted via nanoIR1, with excitation in ATR configuration using the CaF_2 pyramid setup (Anasys Instruments Inc., Santa Barbara, CA, USA) in resonance-enhanced AFM-IR contact mode. The images were scanned utilizing HQ:CSC38/Cr Au probes with a stiffness of 0.07 N/m and scan rate of 0.4 Hz per line. The contact resonances were selected using a search location in the range of 170–190 kHz and a Gaussian filter with a width of 50 kHz. The maximum peak-to-peak amplitude of the oscillatory decay was used for recording AFM-IR spectra. The laser power was set at 15%.

3. Results

3.1. Expression and Localization of MUC1

3.1.1. Expression of MUC1 in Stably Transfected TR146 Cells

Semi-quantification of MUC1 expression levels was performed via dot blot analysis (Figure 2), which revealed that anti-MUC1 antibody labelled MUC1 in cell extracts of transfected cell lines but not in parental TR146 cells. It also showed that the level of MUC1 expression was not significantly different between transfected cell lines.

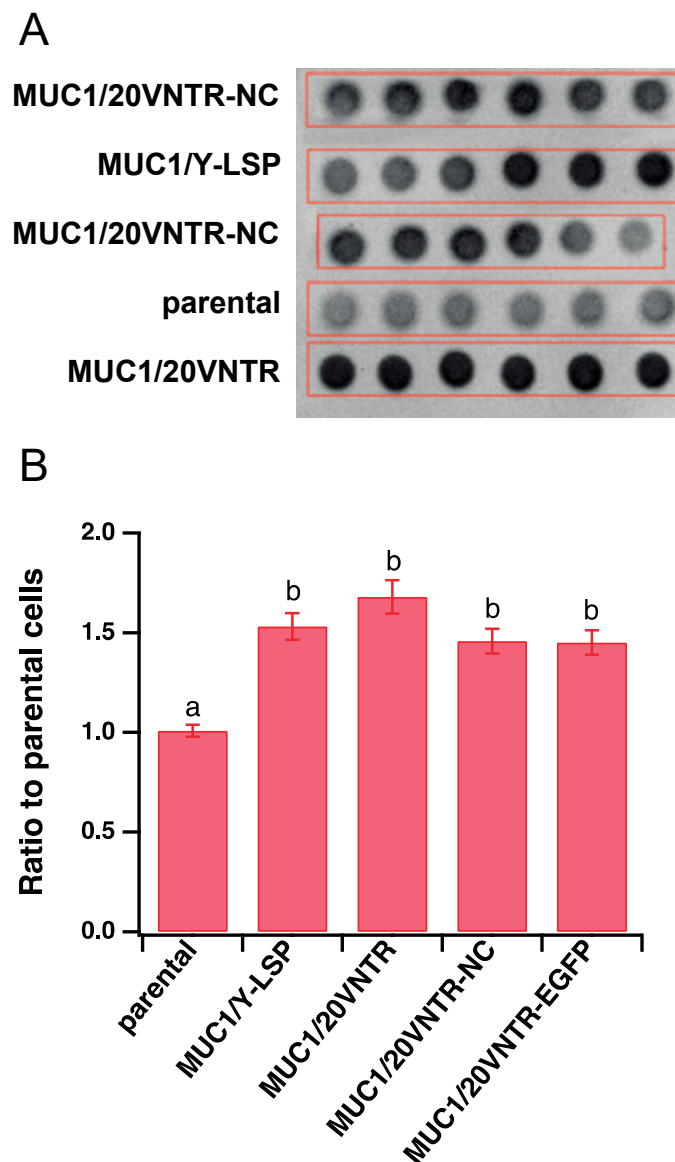


Figure 2. (A) Dot blot assay (hexaplicates) to detect the expression of MUC1 isoforms in transfected and un-transfected TR146 cells. (B) Semi-quantification (mean \pm STD) of MUC1 isoforms expressed in the ratio of the background measured in TR146 parental cells (Different letters represent statistically significant differences; one-way ANOVA followed by Tukey pairwise comparison tests with p -value < 0.05).

3.1.2. Cellular Localization of MUC1

To ensure proper localization of MUC1 to the cell membrane, fluorescent co-immunolabelling of the plasma membrane (red) and MUC1 (blue) was performed, followed by imaging with confocal microscopy (Figure 3). The left column of Figure 3 displays membrane localization in red, the middle column shows MUC1 localization in blue, and the right column illustrates the merged image for each TR146 cell line. No MUC1 expression was observed for parental cells, resulting in a red picture after merging. All transfected cell lines exhibited a distinct blue color in the middle column, indicating MUC1 expression, which seems to be in all parts of the cells. Merged images show a dominant co-fluorescence (magenta labelling), indicating that MUC1 and the cell membrane were colocalized. Thus, these images show that MUC1 was well expressed and addressed to the membrane in transfected cell lines.

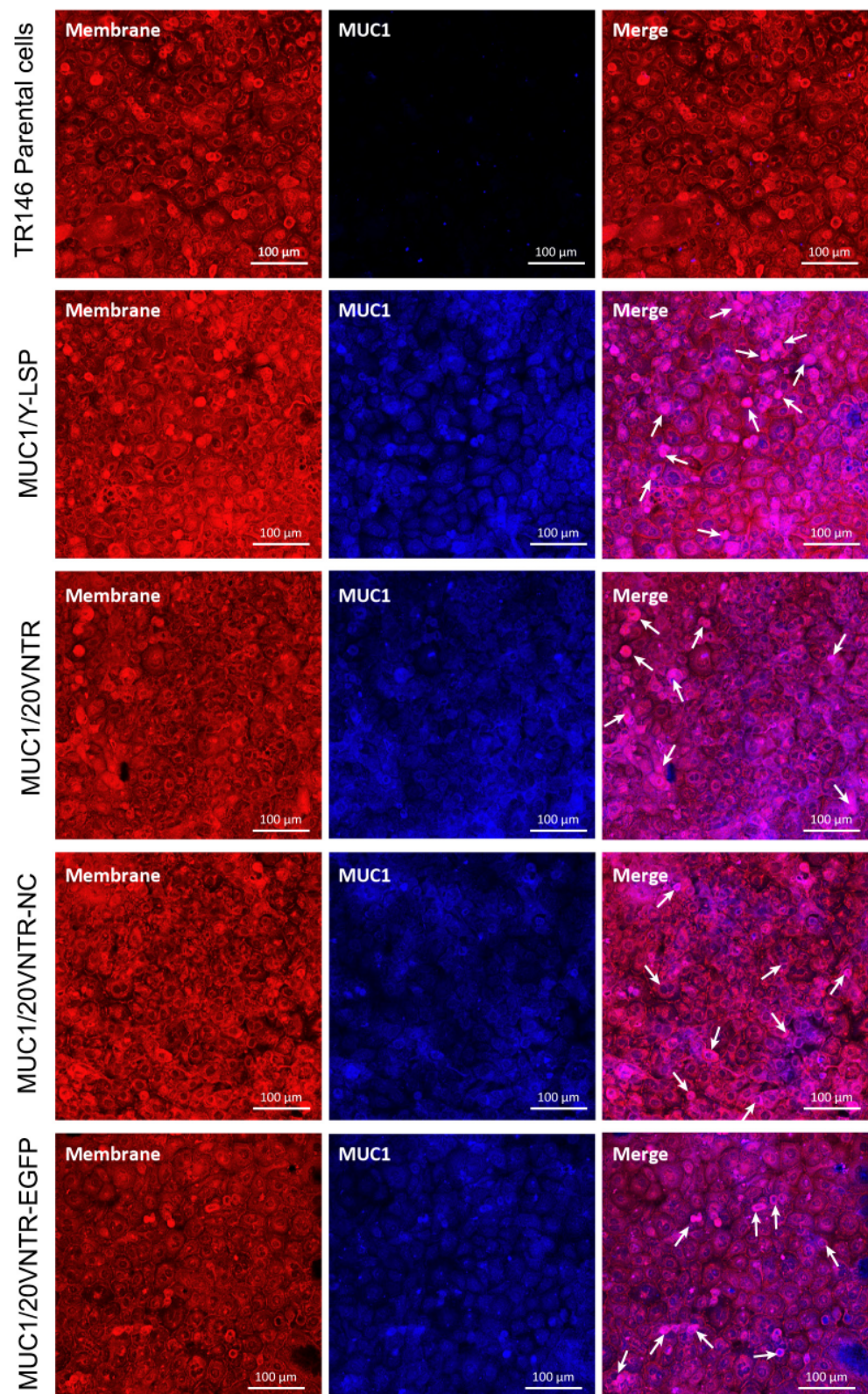


Figure 3. Co-immunostaining of the glycoprotein visualized using concanavalin A, a lectin known to selectively bind to cell-surface glycoproteins, depicted in red. Simultaneously, a secondary antibody labelled with Alexa Fluor 405, targeting the primary antibody anti-MUC1 (depicted in blue), is employed. The image was captured utilizing confocal microscopy. The regions of co-localization between the glycoprotein and MUC1 are represented by the magenta signal, highlighted by the white arrow.

3.2. Mucosal Pellicle (MP) Formation: Binding of the Salivary Protein MUC5B

MP formation was evaluated by determining the amount of anchoring of the salivary protein MUC5B at the cell surface of the different cell lines. Figure 4a shows pictures of MUC5B immunostaining revealing the anchoring of MUC5B on the surface of the different cell lines. Image analysis of the fluorescence intensity revealed differences in MUC5B anchoring depending on cell lines. Significantly more MUC5B was anchored on the surface of transfected cells than on the surface of parental cells after 2 h incubation with human saliva (Figure 4a,b), while no significant differences were observed between the transfected cell lines. On average, the amount of MUC5B retained on the surface of MUC1-expressing cells was threefold higher than that on the surface of parental TR146 cells ($p < 0.05$).

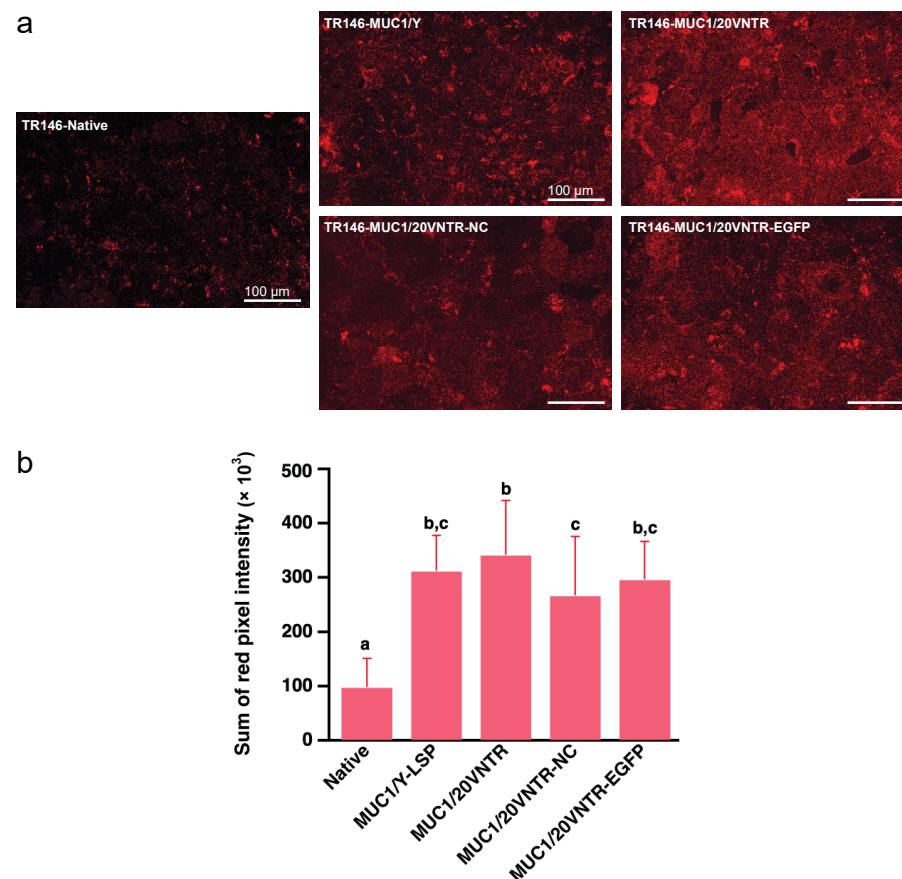


Figure 4. Anchoring of salivary mucin MUC5B to TR146 and TR146-MUC1 cells after incubation for 2 h with human saliva. (a) MUC5B immunostaining on TR146 and TR146-MUC1 cell surfaces, and (b) semi-quantification via image analysis (Different letters represent statistically significant differences; one-way ANOVA followed by Tukey pairwise comparison tests $n = 45$; p -value < 0.05). Scale bars 100 µm.

Scanning electron microscopy (SEM) was used to complement immunohistochemistry. SEM allowed observation of the structure of the mucosal film on the cell lines' surfaces (Figure 5) and revealed that it consisted of a loose filamentous network. Slight differences could be observed between the parental cells (Figure 5a(A,B)) and cells transfected with MUC1 (Figure 5a(C–J)). Indeed, the structure of the microplicae could be clearly seen on the surface of the parental TR146 cells while it was less visible on the pictures of TR146/MUC1 cells, suggesting that the salivary deposit was thicker on the parental cells compared to TR146/MUC1. SEM coupled with MUC5B immunostaining was also performed (Figure 5b(K,L)) and confirmed the anchoring of MUC5B at the cell surface. These pictures also revealed few aggregates composed of MUC5B at the cell's surface.

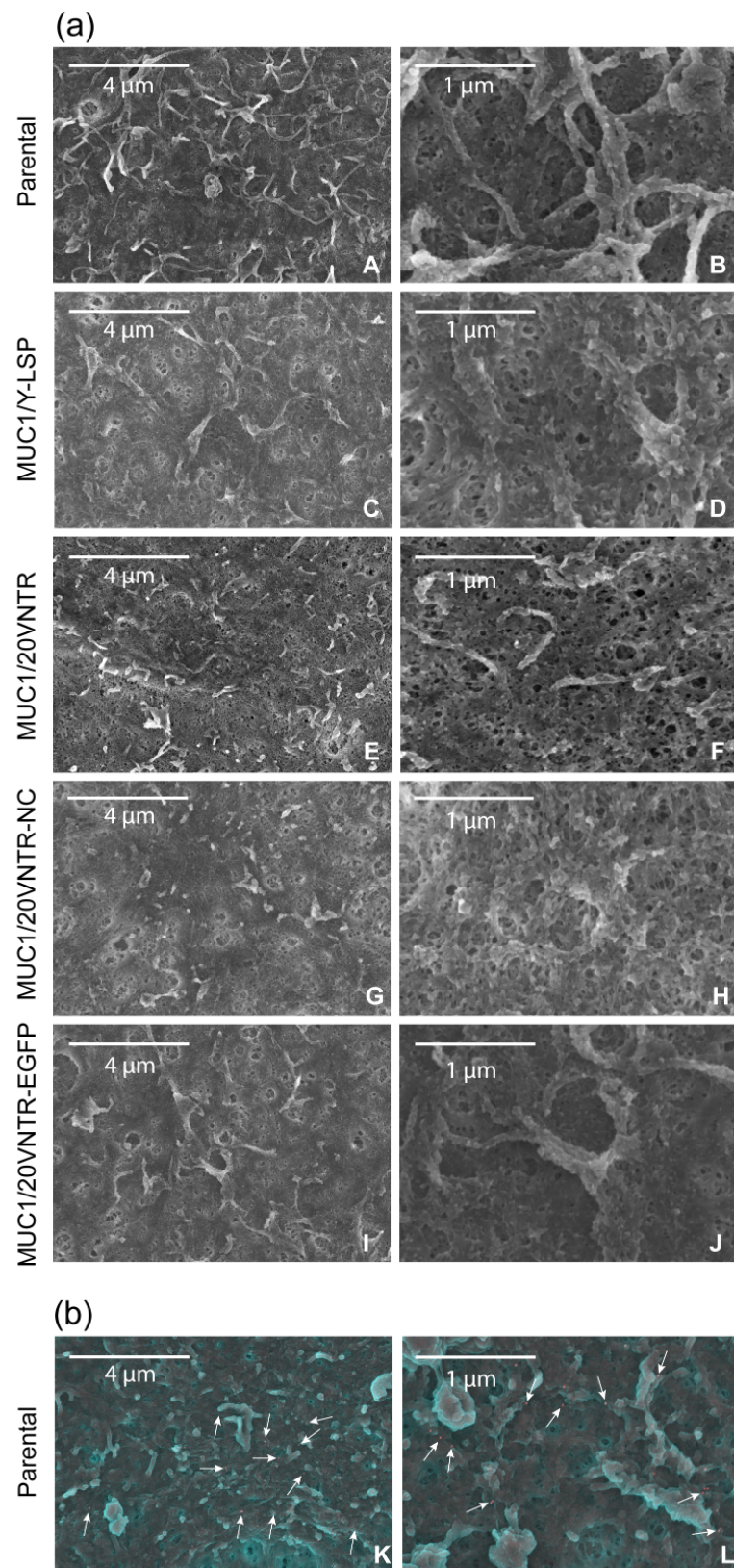


Figure 5. (a) SEM observation of TR146 (A,B) and TR146-MUC1 (C–J) cell surfaces after incubation for 2 h with clarified human saliva, and (b) (K,L) immuno-SEM detection of MUC5B salivary mucin (green) at the surface of TR146 cells. Gold particles are visible in red and indicated by white arrows. For (A,B) the scale bars are 4 μm, zoom ×12.0 K and 1 μm, zoom 45.0 K, respectively.

3.3. AFM-IR Nanospectroscopy Analysis of TR146 Buccal Cells: Impact of MUC1 Isoform on Chemical Properties of Cell Surfaces

AFM-IR was used to unravel the changes in the chemical and structural properties of TR146 buccal cells induced by the expression of the MUC1 isoform with 20 repeats of 20 amino acids on the α -subunit (MUC1/20VNTR). AFM-IR nanospectroscopy uses an AFM tip to sense nanoscale localized IR absorption and provides chemical information through IR spectra simultaneously with the nanoscale topography imaging.

The typical AFM topography image of parental TR146 buccal cells, and AFM-IR absorption maps with corresponding IR spectrum, are presented in Figure 6. Figure 6A presents the topography of the cells. Figure 6D presents AFM-IR spectra acquired on parental TR146 buccal cells and CaF₂ substrate (blue and red annotations in Figure 6A–C). The two prominent absorption bands with peaks at 1675 cm⁻¹ and 1548 cm⁻¹ (see Figure 6D) are assigned to C=O stretching vibration (amide I band), and N-H bending vibration and C=N stretching vibration (amide II band), respectively [37]. Thus, the AFM-IR spectrum of parental TR146 cells shows conventional amide I and amide II protein bands. The absorption band in the range of 1356 cm⁻¹–1466 cm⁻¹ is a complex spectral region mainly associated with the symmetric stretching, deformation, and bending modes of the methyl groups (CH₃) of proteins [38]. Within this absorption band, the peak at 1408 cm⁻¹ is assigned to C-H bending and asymmetric vibrations of lipid acyl chains [39]. The low intensity peak at 1326 cm⁻¹ in the range of 1234–1350 cm⁻¹ is assigned to the amide III band overlapping with the shoulder at 1268 cm⁻¹, which arises from CH α ' rocking vibration [38]. The absorption peak with the lowest intensity at 1208 cm⁻¹ is assigned to phosphate bands [38]. The absorption fingerprint of carbohydrates of TR146 parental buccal cells is observed in the region of 1000–1164 cm⁻¹ with a prominent peak at 1100 cm⁻¹, assigned to stretching vibration of the C-O and C-C bands in the sugar ring [38]. Within this absorption band, the shoulder at 1074 cm⁻¹ is associated with symmetric phosphate stretching modes [40]. Figure 6B,C present AFM-IR absorption maps at fixed wavenumbers 1670 cm⁻¹ and 1550 cm⁻¹ (Figure 6C), which correspond respectively to two major amide bands (amide I and II) [41]. The AFM-IR absorption maps of amides I and II show uniform protein concentration at the surface of parental TR146 buccal cells presented through the color code of AFM-IR absorption maps (intense red color in Figure 6B,C).

The AFM-IR analysis of transfected TR146 cells which express the MUC1/20VNTR isoform is presented in Figure 7. The AFM-IR absorption maps scanned at 1670 cm⁻¹ and 1550 cm⁻¹ show IR absorption assigned to protein bands which are localized at the surface of transfected cells (intense red and yellow colors in Figure 7B,C, respectively). Figure 7D presents the AFM-IR spectrum acquired on transfected TR146-MUC1/20VNTR cells (blue annotations in Figure 7A–C). Two observed absorption bands with peaks at 1670 cm⁻¹ and 1550 cm⁻¹ (Figure 7D) exhibit strong IR absorbance assigned to the amide I and amide II bands, respectively. By comparing AFM-IR spectra acquired on parental TR146 cells (Figure 6D) and transfected TR146-MUC1/20VNTR cells (Figure 7D), we can conclude that absorption regions assigned to amide I and amide II bands remain intact. In addition, the AFM-IR spectrum acquired on TR146-MUC1/20VNTR shows an absorption peak at 1100 cm⁻¹ and a band in the range of 1000 cm⁻¹–1158 cm⁻¹ assigned to the stretching vibrations of the C-O and C-C of polysaccharides [38]. Thus, the presence of the MUC1/20VNTR isoform does not impact the position and width of the absorption band associated with polysaccharides. In addition, the peak with the lowest intensity at 1206 cm⁻¹, assigned to phosphate bands, is evenly presented in both AFM-IR spectra (Figures 6D and 7D). However, it can be seen that the expression of the MUC1/20VNTR isoform by transfected cells particularly impacted the absorption bands in the region of 1238 cm⁻¹–1468 cm⁻¹, as presented in Figure 7D. In this region, a new absorption feature can be seen in the AFM-IR spectrum acquired on transfected TR146-MUC1/20VNTR cells (Figure 7D). By comparing AFM-IR spectra acquired on parental TR146 cells and TR146-MUC1/20VNTR cells (Figures 6D and 7D), we can see that the peak at 1326 cm⁻¹, assigned to C-N symmetry vibration (amide III band), is absent in the AFM-IR spectrum

of transfected TR146-MUC1/20VNTR cells. The prominent absorption peak at 1408 cm^{-1} (Figure 6D) disappeared in the absorption band common in stretching, deformation and bending of CH_2/CH_3 groups (1362 cm^{-1} – 1468 cm^{-1}). Instead, a peak with a low intensity is observed at 1384 cm^{-1} , which is usually assigned to deformation of methyl groups of proteins (Figure 7D) [38,42]. The extracellular α subunit of MUC1/20VNTR isoform is extensively O-glycosylated and, besides the amino acid serine, it is constituted of threonine amino acids which possess methyl groups. Numerous conformational analyses and molecular modelling have reported that the structure of mucin-type glycopeptides strongly depends on the threonine amino acid involved in glycosylation [43–45]. In fact, the simple methyl group of threonine amino acids induces conformational limitation and a more rigid structure in Thr-linked glycopeptides compared to those attached only to serine amino acids [43]. Thus, the appearance of a low intensity peak at 1384 cm^{-1} on the AFM-IR spectra of TR146-MUC1/20VNTR cells may be due to threonine-linked O-glycopeptide residues, while the absence of absorption bands in the range of 1238 cm^{-1} – 1468 cm^{-1} (Figure 7D) could be induced by the limited conformational properties of Thr-linked glycopeptides.

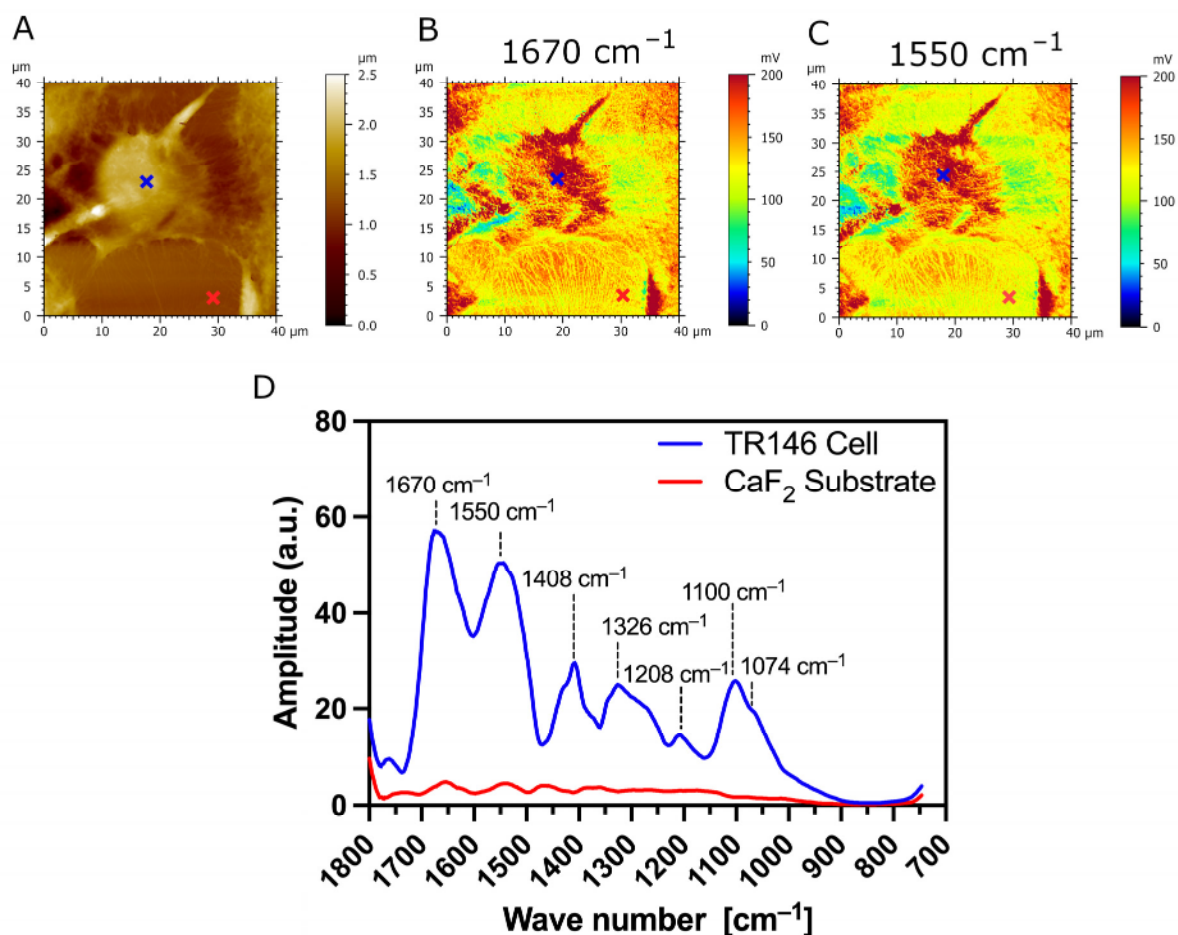


Figure 6. AFM-IR imaging of TR146 (parental) buccal cells. Size of imaged area: $40 \times 40\ \mu\text{m}$. (A) AFM topography and (B,C) corresponding AFM-IR absorption maps of a parental TR146 cell at optimized wavenumbers 1670 cm^{-1} (amide I) and 1550 cm^{-1} (amide II), respectively. Both AFM-IR images show TR146 cells with higher IR absorption (intensive red color) compared to the underlying CaF_2 substrate. (D) AFM-IR spectra were acquired on the cell's surface (blue cross) and CaF_2 (red cross). Both spectra were acquired at 1670 cm^{-1} and 1550 cm^{-1} and averaged and smoothed using a Savitzky–Golay filter (order 2, 10 pt). The prominent absorption bands in the ranges of 1600 cm^{-1} – 1800 cm^{-1} , 1470 cm^{-1} – 1570 cm^{-1} , and 1250 cm^{-1} – 1350 cm^{-1} are conventional protein bands associated with the amide I, amide II, and amide II bands, respectively. The absorption band with the peak at 1100 cm^{-1} is associated with carbohydrates.

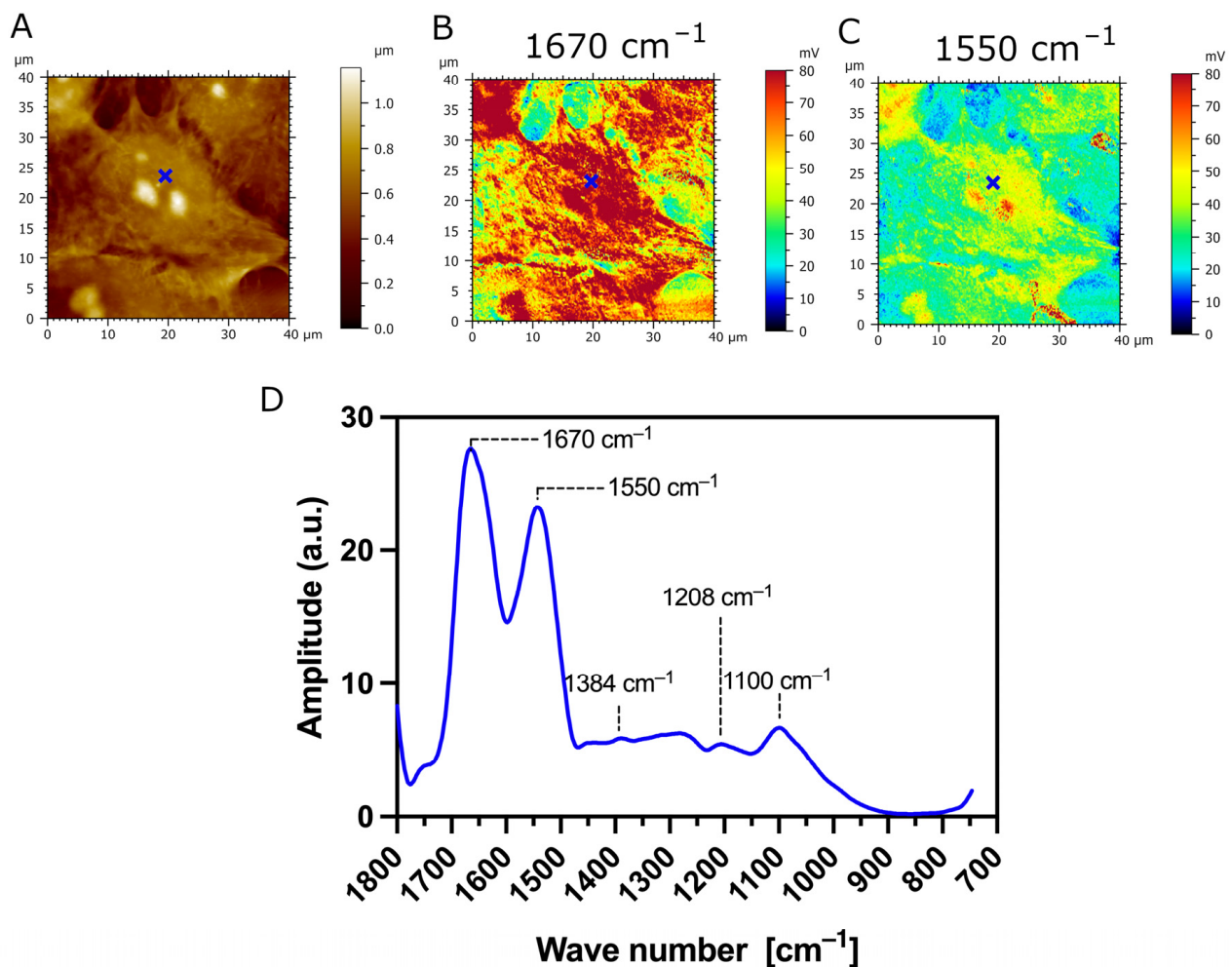


Figure 7. AFM-IR imaging of transfected TR146-MUC1/20VNTR buccal cells. Size of imaged area: 40 × 40 μm. (A) AFM topography and (B,C) corresponding AFM-IR absorption maps at optimized wavenumbers 1670 cm⁻¹ (amide I) and 1550 cm⁻¹ (amide II), respectively. Both AFM-IR images show transfected TR146-MUC1/20VNTR cells with higher IR absorption compared to the underlying CaF₂ substrate. (D) AFM-IR spectrum acquired on the surface of TR146-MUC1/20VNTR (blue cross). This spectrum is the average of two spectra acquired at 1670 cm⁻¹ and 1550 cm⁻¹ on the cell's surface and smoothed using a Savitzky–Golay filter (order 2, 10 pt). AFM-IR spectrum of TR146-MUC1/20VNTR shows prominent modification in the range of 1250–1350 cm⁻¹ (amide III band) and 1358–1470 cm⁻¹ (bending modes of methyl groups) compared to spectra acquired on TR146 (parental) cells.

Additionally, we used AFM-IR nanospectroscopy to measure local IR absorption spectra (730 cm⁻¹–1850 cm⁻¹) at different zones of the samples. The IR spectra were acquired on the CaF₂ substrate (outlined in green), the surface of transfected TR146-MUC1/20VNTR cells (outlined in red), and the cell's spacing area (outlined in blue), as presented in Figure 8A,B. The most apparent increase in IR amplitude in amide absorption bands is observed in IR spectra acquired on the surface of TR146-MUC1/20VNTR cells (outlined in red). In addition, the IR amplitude of the absorption band assigned to polysaccharides (1000 cm⁻¹–1158 cm⁻¹) is noticeably increased in the acquisition zone on the cell's surface (red lines), while this absorption band is not present in IR spectra acquired on CaF₂ (green line) and intercellular spacing (blue lines). As MUC1/20VNTR is expressed on the surface of transfected cells, we conclude that the increase in the IR amplitude in the absorption region of 1000 cm⁻¹–1158 cm⁻¹ comes from the extensive O-glycosylation profile of MUC1/20VNTR [46,47]. Figure 9 presents IR absorption measurements acquired in a restricted wavelength range (1000 cm⁻¹–1200 cm⁻¹) on the surface

of a TR146-MUC1/20VNTR cell; the appearance of an additional peak at 1042 cm^{-1} is visible (Figure 9C). This peak is assigned to the glycogen band (OH stretching), and it is usually referred to as a global estimation of glycosylation level [47].

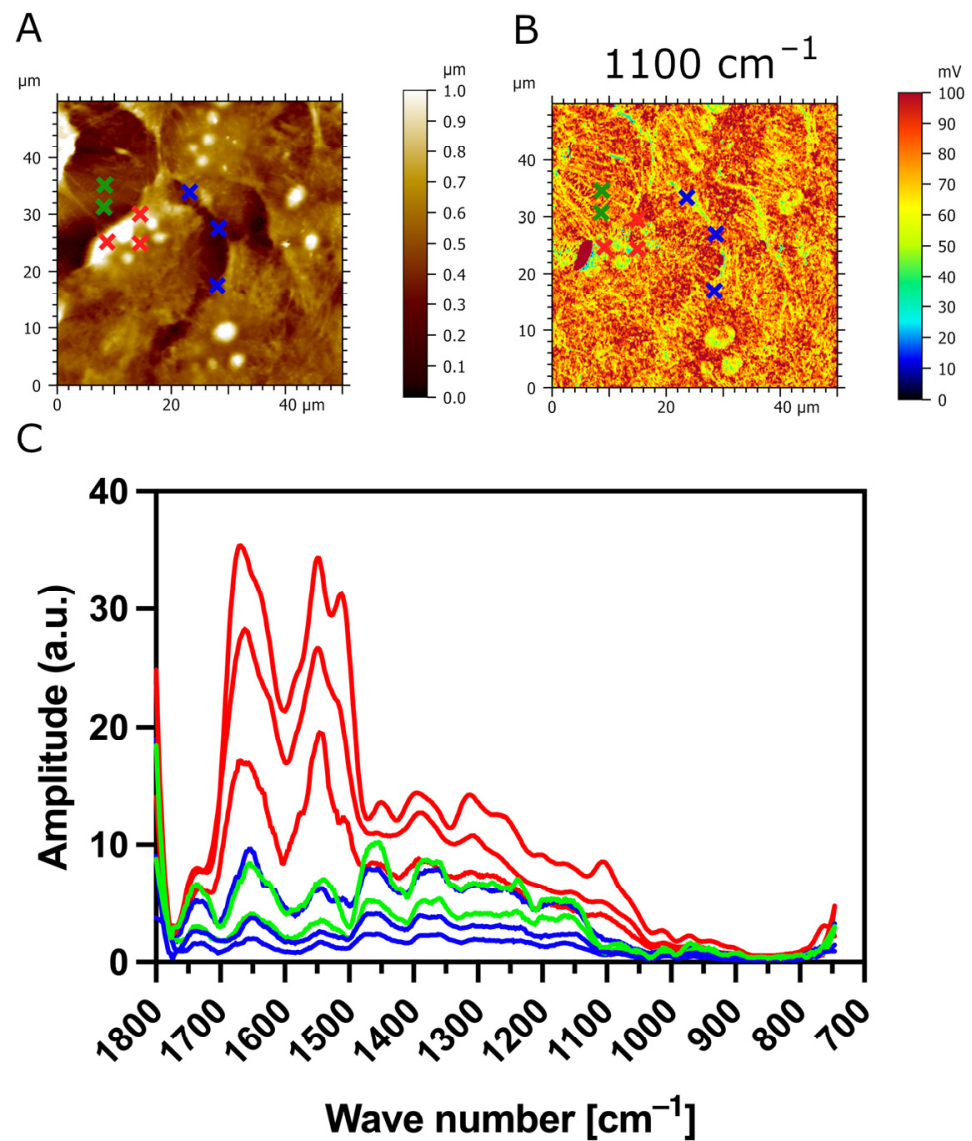


Figure 8. IR absorption measurement of TR146-MUC1/20VNTR as a function of wavelength at selected zones of interest. (A) AFM topography and (B) AFM-IR absorption map (1100 cm^{-1}) of transfected TR146-MUC1/20VNTR cells with eight indicated areas of IR spectrum acquisition at three different zones: CaF₂ substrate (green crosses), surface of TR146-MUC1/20VNTR cells (red crosses), and intercellular area (blue crosses). (C) The IR amplitude of the sugar absorption band (1000 cm^{-1} – 1158 cm^{-1}) is prominently increased once the spectra are acquired on the cell's surface (red lines) compared to IR spectra of CaF₂ (green line) and intercellular spacing (blue line).

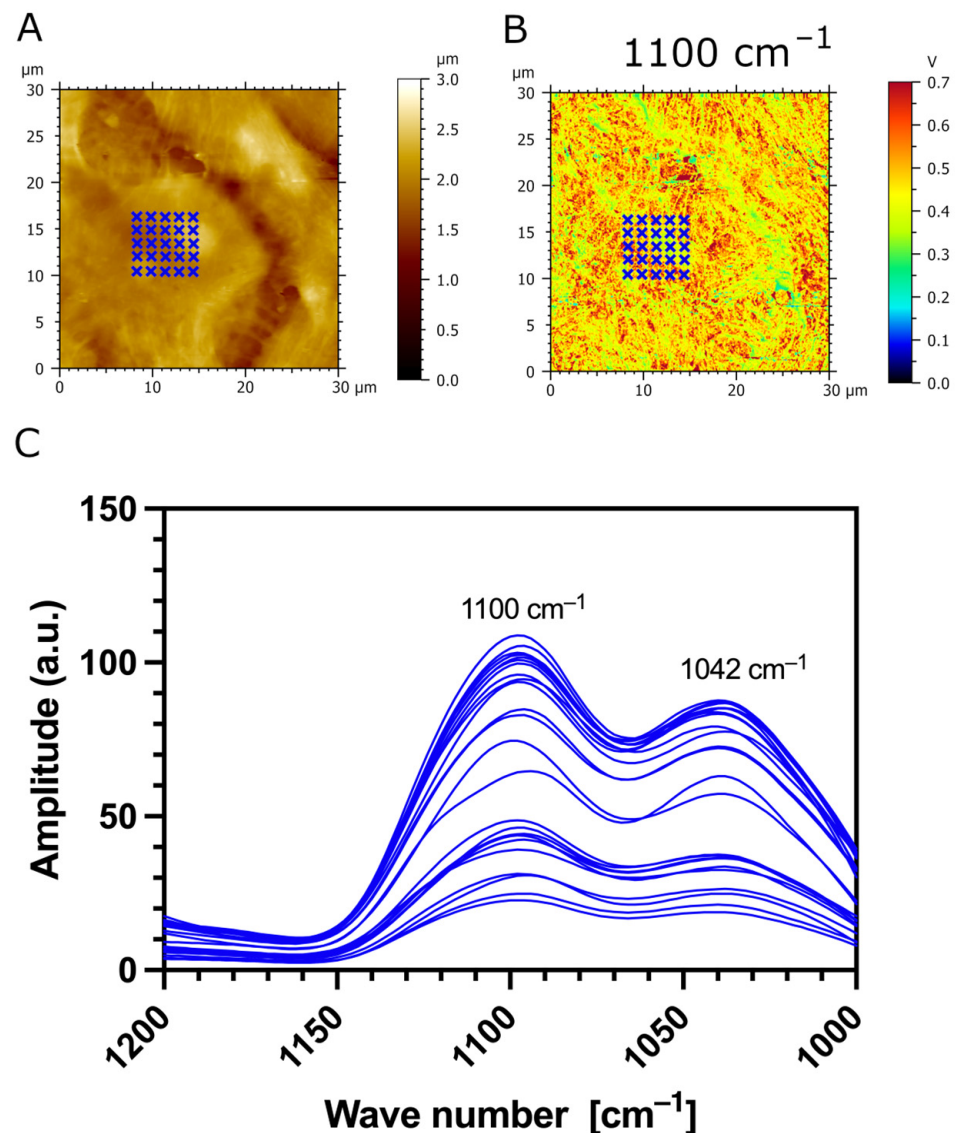


Figure 9. Measurement of IR absorption as a function of the restricted wavelength region assigned to sugar bands (1000 cm^{-1} – 1200 cm^{-1}). (A) AFM topography and (B) AFM-IR absorption map (1100 cm^{-1}) with 30 indicated zones (blue crosses) of IR spectrum acquisition on the surface of a TR146-MUC1/20VNTR cell. (C) IR spectra show two absorption peaks: 1100 cm^{-1} , assigned to stretching vibrations of the C-O and C-C bands of polysaccharides, and 1042 cm^{-1} , assigned to the glycogen band.

4. Discussion

The present study aimed to evaluate the effects of the main structural domains of MUC1 on the formation of the MP on oral epithelial cells and, more generally, to obtain a deeper understanding of their involvement in the formation of the MP. Three new in vitro models of oral mucosa were proposed, based on the transfection of the TR146 cell line with three different isoforms of MUC1: MUC1/20VNTR, MUC1/20VNTR-NC, and MUC1/20VNTR-EGFP. Overall, MUC5B binding was quantitatively enhanced when oral epithelial cells expressed the different isoforms of MUC1. Any effect of the presence of the VNTR and the structure of the SEA domain was observed.

The new models were based on the transfection of the TR146 cell line, similar to the TR146-MUC1/Y-LSP cell line that was previously developed [20]. At their surfaces, TR146 cells exhibit the typical membrane folds of oral cells of non-keratinized surfaces, called microplicae (MPLs) [22]. MPLs are present at the surface of the TR146 cell line, as

previously observed [20]. MPLs are typically present on the surfaces of areas covered with protective mucus. The function of MPLs is still not clear, but they may be involved in MP formation [48]. Additionally, MPLs increase the surface contact of the cells, favouring exchange with the environment. The presence of the transmembrane mucin MUC1 at MPLs' apical end has been reported in vivo [22]. However, the TR146 cell line does not express MUC1 [22]. MUC1 is the only tethered mucin reported to play a role in the formation of the MP. As a membrane-bound protein, MUC1 appears to be a key protein in MP formation [20] because it provides an anchoring point for salivary proteins forming the MP, such as the gel-forming mucin MUC5B [49]. MUC1 is a highly glycosylated protein, participating in the lubrication of the oral mucosa by rendering its surface hydrophilic and electrostatic. These properties are probably also involved in the mucosa's ability to interact with molecules, including flavour compounds [5–7]. Moreover, the expression of MUC1 has also been correlated with trigeminal sensitivity without a clear explanation [50].

MUC1 is a polymorphic protein with important interindividual variability at the sequence and glycosylation level. MUC1/1, the common isoform of MUC1, is composed of two noncovalently bound subunits: the α -subunit and the β -subunit. The α -subunit (N-terminal subunit) of MUC1/1 is entirely extracellular, forms a rigid structure that can extend 300–500 nm above the cell surface, and is composed of two main domains. The variable number tandem repeat (VNTR) domain consists of nearly identical repeats with abundant O-glycosylation on the serine and threonine residues. The VNTR domain comprises approximately 20–120 repeat units depending on the inherited polymorphism, with 40 and 80 repeats being the most frequent [51]. The SEA domain comprises approximately 120 amino acids. It is a well-structured domain [24] that includes an autoproteolytic cleavage site. The β -subunit (C-terminal) comprises a short extracellular domain, a transmembrane domain, and a short cytoplasmic tail (CT), which has seven phosphorylation sites that support the role of MUC1 as a signalling molecule. MUC1/Y-LSP is differentiated from MUC1/1 by the absence of the VNTR domain and by a 15-amino-acid deletion "GVSFFFLSFHISNLQ" at the SEA domain N-terminus which, as a result, means it does not undergo cleavage. These two domains play an important role in the biological functions of MUC1. Glycosylation of the VNTR domain also participates in the formation of a physical barrier via steric hindrance [28,52,53] toward exogenous pathogens. The presence of the autoproteolytic cleavage site in the SEA domain allows the dissociation of the two subunits of MUC1 by mechanical action [24]. This mechanism may be part of a defence mechanism against pathogens or used to probe the extracellular environment. Microorganisms, which bind to the α -subunit, are eliminated by clearance after dissociation of the two subunits [54]. Similarly, the dissociation of the two subunits due to particular external conditions may act as a sensing function of MUC1 via the activation of intracellular signalling pathways [3,55]. However, there is no clue as to the role of these two domains in the formation of the MP and, in particular, the anchoring of MUC5B.

In order to unravel the structure-dependent function of the MUC1/20VNTR isoform, we performed AFM-IR nanospectroscopy on three cell lines: parental (TR146) cell lines, transfected TR146 cell lines without saliva (Figure 7), and transfected TR146 cell lines with saliva (Figure 10). Using the AFM-IR technique, we investigated the chemical properties of the transfected TR146 buccal cells induced by the MUC1/20VNTR protein (isoform 1), and the interactions involved in the anchoring of saliva on TR146-MUC1/20VNTR cells. The AFM-IR spectra of TR146-MUC1/20VNTR cell lines showed modification of the absorption bands in the region of 1238 cm^{-1} – 1468 cm^{-1} (Figure 7D) compared to the spectra of TR146 parental cells (Figure 6D). In this absorption domain, a low intensity peak was observed at 1384 cm^{-1} , which is assigned to deformation of CH_2 and CH_3 groups [38,42]. This peak may have originated from threonine-linked O-glycopeptide residues of the MUC1/20VNTR isoform since threonine amino acids possess a methyl group. The simple methyl group of threonine amino acids influences conformational limitations in Thr-linked glycopeptides and, as such, could induce the appearance of a peak at 1384 cm^{-1} and the absence of absorption bands in the range of 1238 cm^{-1} – 1468 cm^{-1} (Figure 7D). We

pursued AFM-IR investigation of TR146-MUC1/20VNTR cells with saliva (Figure 10). The AFM-IR spectrum (Figure 10c) revealed the absorption peak at 1396 cm^{-1} , which is assigned to CH₃ deformation bending of the methyl groups of proteins. The changes in the position of the CH₃ absorption bands in the AFM-IR spectra in Figures 7D and 10c (1384 cm^{-1} – 1396 cm^{-1}) were induced by the presence of saliva and may have originated from hydrophobic interactions between the MUC1/20VNTR isoform and salivary proteins. Indeed, it has been reported that the hydrophobic interactions of the methyl groups of polypeptides cause a shift in C-H absorption bands to higher frequencies [56]. Thus, we can deduce that salivary proteins (MUC5B) are anchored at the surface of transfected TR126-MUC1/20VNTR cells by hydrophobic interactions established between methyl residues of the MUC1/20VNTR isoform and salivary proteins (MUC5B).

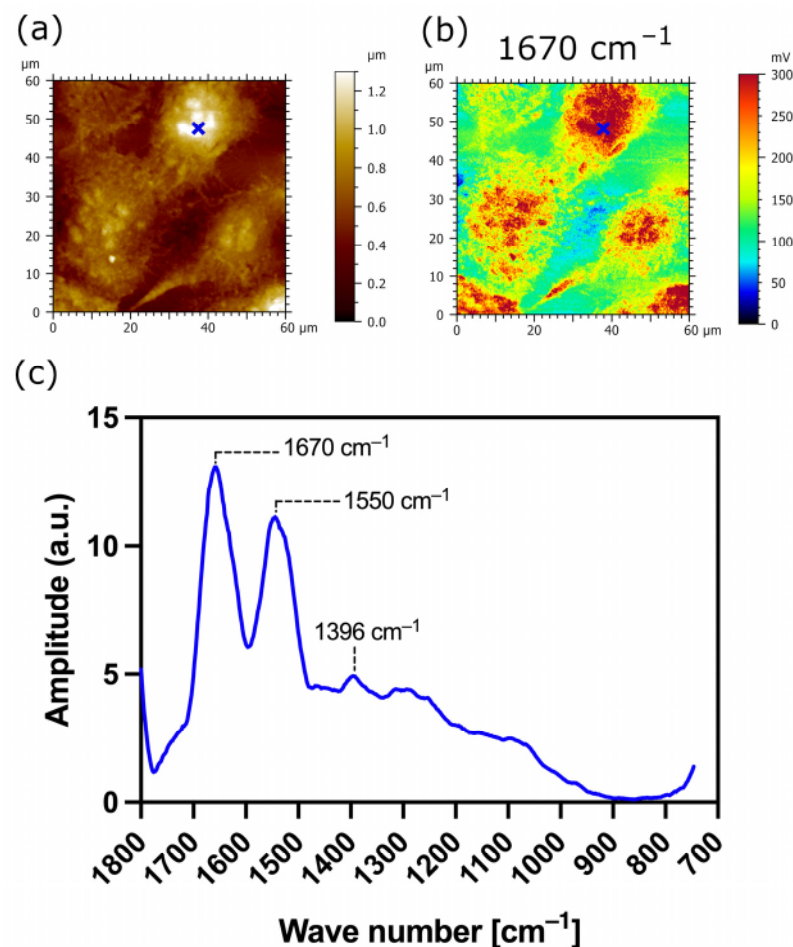


Figure 10. AFM-IR imaging of transfected TR146-MUC1/20VNTR buccal cells with saliva. Size of imaged area: $60 \times 60\ \mu\text{m}$. (a) AFM topography and (b) corresponding AFM-IR absorption map at optimized wavenumber 1670 cm^{-1} (amide I band). (c) AFM-IR spectrum acquired on the surface of TR146-MUC1/20VNTR with saliva (blue cross). It shows an absorption peak at 1396 cm^{-1} , which corresponds to symmetric CH₃ bending of the methyl groups of proteins.

In this study, we confirmed that MUC1 expression at the cell surface increases the anchoring of MUC5B, while no significant effects of the VNTR or the SEA domain structures were observed. This suggests that these two structural domains are not involved in the anchoring of MUC5B. Another study reported biochemical interactions between the non-glycosylated CYS domains of MUC5B and the last 107 amino acids located at the N-terminus of MUC1 [57]. Thus, the last 107 amino acids of MUC1 may participate in the binding site of MUC5B. In agreement with this hypothesis, MUC5B has been reported to adsorb onto hydrophobic surfaces [14], possibly because the last 107 amino acids of

the peptide chain represent a domain with hydrophobic properties. Thus, hydrophobic effects may be involved in the MUC5B anchoring on MUC1. At the opposite end, the hydrophilic properties of the VNTR may preclude the involvement of this structural domain in the interaction.

5. Conclusions

New in vitro models of oral mucosa were developed to investigate the role of the main structural domains of MUC1. These models confirmed that MUC1 is involved in the formation of the MP but suggest that the VNTR and SEA domain are not involved. Further investigations need to be conducted to confirm that the last N-terminal 107 amino acids of MUC1 comprise the binding site of MUC5B, participating in the formation of the MP. The MP is involved in many biological processes, such as surface lubrication; protection against bacterial colonization; and sensory perception, notably, aromatic persistence and astringency perception [5,6]. Thus, further studies should be performed to study the impact of the VNTR and SEA structural domains on the physicochemical properties of the cell lines and the ability of the MP to interact with flavour compounds. In view of this, we have recently put forward a new hypothesis of the molecular mechanisms underlying the sensory perception of astringency [3], in which MUC1 plays a key role, especially the SEA domain. The novel oral mucosa models developed in this study will allow us to investigate this hypothesis, and are poised to facilitate additional investigations aimed at advancing our comprehension of the role and structure of MUC1 in oral cavity lubrication, with potential implications for addressing issues related to oral dryness.

Author Contributions: Conceptualization, E.L., F.N., M.S. and F.C.; methodology, L.A., E.B., E.L., F.N., M.S. and F.C.; software, F.C.; validation, L.A., F.J.B., E.B., E.L., F.N., C.B. and F.C.; formal analysis, C.N., I.C., L.A., F.J.B., A.B., E.B., E.L., J.-M.H., M.L., O.P., C.B., N.H. and F.C.; investigation, C.N., I.C., A.B., E.B., H.B., J.-M.H., N.H. and M.L.; resources, L.A., F.J.B., E.L., M.L., C.B. and F.C.; data curation, C.N., I.C., L.A., A.B., F.N., E.B., O.P. and F.C.; writing—original draft preparation, C.N., I.C. and F.C.; writing—review and editing, L.A., F.J.B., A.B., E.B., L.B., E.L., H.B., J.-M.H., M.L., F.N., O.P., M.S., C.B., N.H. and F.C.; visualization, C.N., I.C.; E.L., F.N., O.P., M.S., N.H. and F.C.; supervision, L.A.; E.L., F.N., C.B. and F.C.; project administration, L.B., E.L. and F.C.; funding acquisition, E.L. and F.C. All authors have read and agreed to the published version of the manuscript.

Funding: This study was funded by the French National Research Agency (Grant MACARON ANR-20-CE21-002) and by Conseil Regional de Bourgogne Franche-Comté (France) (AAP Région 2020—ANER—Projet AFMdynDNA, AAP Région 2020 DNA-Heritage, AAP Région 2021—Projet MétaboFlav). This work has also been supported by the EIPHI Graduate School (contract ANR-17-EURE-0002). The French Ministry of Higher Education and Research provided the PhD fellowship for Clément Nivet.

Institutional Review Board Statement: The study was conducted in accordance with the Declaration of Helsinki, and approved by Ethics Committee for Research (CPP Est I. Dijon, #14.06.03, ANSM #2014-A00071-46) and was conducted according to the declaration of Helsinki.

Informed Consent Statement: Informed consent was obtained from all subjects involved in the study.

Data Availability Statement: The data presented in this study are available on request from the corresponding author.

Acknowledgments: The authors thank Elodie Noirot for technical advice regarding confocal microscopy.

Conflicts of Interest: The authors declare no conflicts of interest.

References

1. Vielmuth, F. Anatomy of the Oral Mucosa. In *Diseases of the Oral Mucosa: Study Guide and Review*; Schmidt, E., Ed.; Springer International Publishing: Cham, Switzerland, 2021; pp. 5–19.
2. Roed-Petersen, B.; Renstrup, G. A Topographical Classification of the Oral Mucosa Suitable for Electronic Data Processing Its Application to 560 Leukoplakias. *Acta Odontol. Scand.* **1969**, *27*, 681–695. [[CrossRef](#)]

3. Canon, F.; Belloir, C.; Bourillot, E.; Brignot, H.; Briand, L.; Feron, G.; Lesniewska, E.; Nivet, C.; Septier, C.; Schwartz, M.; et al. Perspectives on Astringency Sensation: An Alternative Hypothesis on the Molecular Origin of Astringency. *J. Agric. Food Chem.* **2021**, *69*, 3822–3826. [[CrossRef](#)] [[PubMed](#)]
4. Nayak, A.; Carpenter, G.H. A physiological model of tea-induced astringency. *Physiol. Behav.* **2008**, *95*, 290–294. [[CrossRef](#)] [[PubMed](#)]
5. Ployon, S.; Morzel, M.; Belloir, C.; Bonnotte, A.; Bourillot, E.; Briand, L.; Lesniewska, E.; Lherminier, J.; Aybeke, E.; Canon, F. Mechanisms of astringency: Structural alteration of the oral mucosal pellicle by dietary tannins and protective effect of bPRPs. *Food Chem.* **2018**, *253*, 79–87. [[CrossRef](#)] [[PubMed](#)]
6. Ployon, S.; Brulé, M.; Andriot, I.; Morzel, M.; Canon, F. Understanding retention and metabolization of aroma compounds using an in vitro model of oral mucosa. *Food Chem.* **2020**, *318*, 126468. [[CrossRef](#)] [[PubMed](#)]
7. Muñoz-González, C.; Brule, M.; Martin, C.; Feron, G.; Canon, F. Molecular mechanisms of aroma persistence: From noncovalent interactions between aroma compounds and the oral mucosa to metabolization of aroma compounds by saliva and oral cells. *Food Chem.* **2022**, *373*, 131467. [[CrossRef](#)] [[PubMed](#)]
8. Collins, L.M.C.; Dawes, C. The Surface Area of the Adult Human Mouth and Thickness of the Salivary Film Covering the Teeth and Oral Mucosa. *J. Dent. Res.* **1987**, *66*, 1300–1302. [[CrossRef](#)]
9. Pramanik, R.; Osailan, S.M.; Challacombe, S.J.; Urquhart, D.; Proctor, G.B. Protein and mucin retention on oral mucosal surfaces in dry mouth patients. *Eur. J. Oral Sci.* **2010**, *118*, 245–253. [[CrossRef](#)]
10. Assy, Z.; Jager, D.H.J.; Brand, H.S.; Bikker, F.J. Salivary film thickness and MUC5B levels at various intra-oral surfaces. *Clin. Oral Investig.* **2023**, *27*, 859–869. [[CrossRef](#)]
11. Cárdenas, M.; Elofsson, U.; Lindh, L. Salivary Mucin MUC5B Could Be an Important Component of in Vitro Pellicles of Human Saliva: An In Situ Ellipsometry and Atomic Force Microscopy Study. *Biomacromolecules* **2007**, *8*, 1149–1156. [[CrossRef](#)]
12. Faruque, M.; Wanschers, M.; Ligtenberg, A.J.; Laine, M.L.; Bikker, F.J. A review on the role of salivary MUC5B in oral health. *J. Oral Biosci.* **2022**, *64*, 392–399. [[CrossRef](#)]
13. Gibbins, H.; Proctor, G.; Yakubov, G.; Wilson, S.; Carpenter, G. Concentration of salivary protective proteins within the bound oral mucosal pellicle. *Oral Dis.* **2013**, *20*, 707–713. [[CrossRef](#)]
14. Gibbins, H.L.; Yakubov, G.E.; Proctor, G.B.; Wilson, S.; Carpenter, G.H. What interactions drive the salivary mucosal pellicle formation? *Colloids Surf. B Biointerfaces* **2014**, *120*, 184–192. [[CrossRef](#)]
15. Schwartz, M.; Brignot, H.; Feron, G.; Hummel, T.; Zhu, Y.; von Koskull, D.; Heydel, J.-M.; Lirussi, F.; Canon, F.; Neiers, F. Role of human salivary enzymes in bitter taste perception. *Food Chem.* **2022**, *386*, 132798. [[CrossRef](#)] [[PubMed](#)]
16. Bradway, S.D.; Bergey, E.J.; Scannapieco, F.A.; Ramasubbu, N.; Zawacki, S.; Levine, M.J. Formation of salivary-mucosal pellicle: The role of transglutaminase. *Biochem. J.* **1992**, *284*, 557–564. [[CrossRef](#)] [[PubMed](#)]
17. Biesbrock, A.R.; Reddy, M.S.; Levine, M.J. Interaction of a salivary mucin-secretory immunoglobulin A complex with mucosal pathogens. *Infect. Immun.* **1991**, *59*, 3492–3497. [[CrossRef](#)] [[PubMed](#)]
18. Gibbins, H.L.; Proctor, G.B.; Yakubov, G.E.; Wilson, S.; Carpenter, G.H. SigA Binding to Mucosal Surfaces Is Mediated by Mucin-Mucin Interactions. *PLoS ONE* **2015**, *10*, e0119677. [[CrossRef](#)] [[PubMed](#)]
19. Aybeke, E.N.; Ployon, S.; Brulé, M.; De Fonseca, B.; Bourillot, E.; Morzel, M.; Lesniewska, E.; Canon, F. Nanoscale Mapping of the Physical Surface Properties of Human Buccal Cells and Changes Induced by Saliva. *Langmuir* **2019**, *35*, 12647–12655. [[CrossRef](#)] [[PubMed](#)]
20. Ployon, S.; Belloir, C.; Bonnotte, A.; Lherminier, J.; Canon, F.; Morzel, M. The membrane-associated MUC1 improves adhesion of salivary MUC5B on buccal cells. Application to development of an in vitro cellular model of oral epithelium. *Arch. Oral Biol.* **2016**, *61*, 149–155. [[CrossRef](#)] [[PubMed](#)]
21. Offner, G.D.; Troxler, R.F. Heterogeneity of High-molecular-weight Human Salivary Mucins. *Adv. Dent. Res.* **2000**, *14*, 69–75. [[CrossRef](#)]
22. Ukkonen, H.; Pirhonen, P.; Herrala, M.; Mikkonen, J.J.W.; Singh, S.P.; Sormunen, R.; Kullaa, A.M. Oral mucosal epithelial cells express the membrane anchored mucin MUC1. *Arch. Oral Biol.* **2017**, *73*, 269–273. [[CrossRef](#)]
23. Levitin, F.; Stern, O.; Weiss, M.; Gil-Henn, C.; Ziv, R.; Prokocimer, Z.; Smorodinsky, N.I.; Rubinstein, D.B.; Wreschner, D.H. The MUC1 SEA Module Is a Self-cleaving Domain. *J. Biol. Chem.* **2005**, *280*, 33374–33386. [[CrossRef](#)]
24. Macao, B.; Johansson, D.G.A.; Hansson, G.C.; Härd, T. Autoproteolysis coupled to protein folding in the SEA domain of the membrane-bound MUC1 mucin. *Nat. Struct. Mol. Biol.* **2006**, *13*, 71. [[CrossRef](#)] [[PubMed](#)]
25. Parry, S.; Silverman, H.S.; McDermott, K.; Willis, A.; Hollingsworth, M.A.; Harris, A. Identification of MUC1 Proteolytic Cleavage Sites In Vivo. *Biochem. Biophys. Res. Commun.* **2001**, *283*, 715–720. [[CrossRef](#)] [[PubMed](#)]
26. Hanisch, F.-G.; Müller, S. MUC1: The polymorphic appearance of a human mucin. *Glycobiology* **2000**, *10*, 439–449. [[CrossRef](#)] [[PubMed](#)]
27. Muller, S.; Alving, K.; Peter-Katalinic, J.; Zachara, N.; Gooley, A.A.; Hanisch, F.G. High density O-glycosylation on tandem repeat peptide from secretory MUC1 of T47D breast cancer cells. *J. Biol. Chem.* **1999**, *274*, 18165–18172. [[CrossRef](#)] [[PubMed](#)]
28. Imbert, Y.; Darling, D.S.; Jumblatt, M.M.; Foulks, G.N.; Couzin, E.G.; Steele, P.S.; Young, W.W. MUC1 splice variants in human ocular surface tissues: Possible differences between dry eye patients and normal controls. *Exp. Eye Res.* **2006**, *83*, 493–501. [[CrossRef](#)] [[PubMed](#)]

29. Rupniak, H.T.; Rowlatt, C.; Lane, E.B.; Steele, J.G.; Trejdosiowicz, L.K.; Laskiewicz, B.; Povey, S.; Hill, B.T. Characteristics of four new human cell lines derived from squamous cell carcinomas of the head and neck. *J. Natl. Cancer Inst.* **1985**, *75*, 621–635. [[PubMed](#)]
30. Veerman, E.C.I.; Bolscher, J.G.M.; Appelmelk, B.J.; Bloemena, E.; van den Berg, T.K.; Amerongen, A.V.N. A monoclonal antibody directed against high Mr salivary mucins recognizes the SO₃-3Galβ1-3GlcNAc moiety of sulfo-Lewisa: A histochemical survey of human and rat tissue. *Glycobiology* **1997**, *7*, 37–43. [[CrossRef](#)]
31. Mathurin, J.; Deniset-Besseau, A.; Bazin, D.; Dartois, E.; Wagner, M.; Dazzi, A. Photothermal AFM-IR spectroscopy and imaging: Status, challenges, and trends. *J. Appl. Phys.* **2022**, *131*, 010901. [[CrossRef](#)]
32. Dazzi, A.; Glotin, F.; Carminati, R. Theory of infrared nanospectroscopy by photothermal induced resonance. *J. Appl. Phys.* **2010**, *107*, 124519. [[CrossRef](#)]
33. Dazzi, A.; Prater, C.B. AFM-IR: Technology and Applications in Nanoscale Infrared Spectroscopy and Chemical Imaging. *Chem. Rev.* **2017**, *117*, 5146–5173. [[CrossRef](#)] [[PubMed](#)]
34. Custovic, I.; Pocholle, N.; Bourillot, E.; Lesniewska, E.; Piétrement, O. Infrared nanospectroscopic imaging of DNA molecules on mica surface. *Sci. Rep.* **2022**, *12*, 18972. [[CrossRef](#)] [[PubMed](#)]
35. Maryjose, N.; Custovic, I.; Chaabane, L.; Lesniewska, E.; Piétrement, O.; Chambin, O.; Assifaoui, A. Core-shell polygalacturonate magnetic iron oxide nanoparticles: Synthesis, characterization, and functionalities. *Int. J. Biol. Macromol.* **2022**, *220*, 360–370. [[CrossRef](#)]
36. Ruggeri, F.S.; Habchi, J.; Chia, S.; Horne, R.I.; Vendruscolo, M.; Knowles, T.P.J. Infrared nanospectroscopy reveals the molecular interaction fingerprint of an aggregation inhibitor with single Aβ₄₂ oligomers. *Nat. Commun.* **2021**, *12*, 688. [[CrossRef](#)] [[PubMed](#)]
37. Ji, Y.; Yang, X.; Ji, Z.; Zhu, L.; Ma, N.; Chen, D.; Jia, X.; Tang, J.; Cao, Y. DFT-Calculated IR Spectrum Amide I, II, and III Band Contributions of N-Methylacetamide Fine Components. *ACS Omega* **2020**, *5*, 8572–8578. [[CrossRef](#)] [[PubMed](#)]
38. Movasaghi, Z.; Rehman, S.; ur Rehman, D.I. Fourier Transform Infrared (FTIR) Spectroscopy of Biological Tissues. *Appl. Spectrosc. Rev.* **2008**, *43*, 134–179. [[CrossRef](#)]
39. Durak, R.; Ciak, B.; Durak, T. Highly Efficient Use of Infrared Spectroscopy (ATR-FTIR) to Identify Aphid Species. *Biology* **2022**, *11*, 1232. [[CrossRef](#)]
40. Fujioka, N.; Morimoto, Y.; Arai, T.; Kikuchi, M. Discrimination between normal and malignant human gastric tissues by Fourier transform infrared spectroscopy. *Cancer Detect. Prev.* **2004**, *28*, 32–36. [[CrossRef](#)]
41. Barth, A. Infrared spectroscopy of proteins. *Biochim. Biophys. Acta (BBA)—Bioenerg.* **2007**, *1767*, 1073–1101. [[CrossRef](#)]
42. Paluszkiwicz, C.; Kwiatek, W.M. Analysis of human cancer prostate tissues using FTIR microspectroscopy and SRIXE techniques. *J. Mol. Struct.* **2001**, *565–566*, 329–334. [[CrossRef](#)]
43. Barchi, J.J.; Strain, C.N. The effect of a methyl group on structure and function: Serine vs. threonine glycosylation and phosphorylation. *Front. Mol. Biosci.* **2023**, *10*, 1117850. [[CrossRef](#)] [[PubMed](#)]
44. Barchi Jr, J.J. Mucin-Type Glycopeptide Structure in Solution: Past, Present, and Future. *Biopolymers* **2013**, *99*, 713–723. [[CrossRef](#)] [[PubMed](#)]
45. Naganagowda, G.A.; Gururaja, T.E.L.; Satyanarayana, J.; Levine, M.J. NMR analysis of human salivary mucin (MUC7) derived O-linked model glycopeptides: Comparison of structural features and carbohydrate–peptide interactions. *J. Pept. Res.* **1999**, *54*, 290–310. [[CrossRef](#)]
46. Derenne, A.; Derfoufi, K.-M.; Cowper, B.; Delporte, C.; Goormaghtigh, E. FTIR spectroscopy as an analytical tool to compare glycosylation in therapeutic monoclonal antibodies. *Anal. Chim. Acta* **2020**, *1112*, 62–71. [[CrossRef](#)] [[PubMed](#)]
47. Khajehpour, M.; Dashnau, J.L.; Vanderkooi, J.M. Infrared spectroscopy used to evaluate glycosylation of proteins. *Anal. Biochem.* **2006**, *348*, 40–48. [[CrossRef](#)] [[PubMed](#)]
48. Asikainen, P.; Ruotsalainen, T.J.; Mikkonen, J.J.W.; Koistinen, A.; ten Bruggenkate, C.; Kullaa, A.M. The defence architecture of the superficial cells of the oral mucosa. *Med. Hypotheses* **2012**, *78*, 790–792. [[CrossRef](#)]
49. Demouveau, B.; Gouyer, V.; Gottrand, F.; Narita, T.; Desseyn, J.-L. Gel-forming mucin interactome drives mucus viscoelasticity. *Adv. Colloid Interface Sci.* **2018**, *252*, 69–82. [[CrossRef](#)]
50. Kang, J.-H.; Kim, Y.-Y.; Chang, J.-Y.; Kho, H.-S. Relationships between oral MUC1 expression and salivary hormones in burning mouth syndrome. *Arch. Oral Biol.* **2017**, *78*, 58–64. [[CrossRef](#)]
51. Gendler, S.J.; Lancaster, C.A.; Taylor-Papadimitriou, J.; Duhig, T.; Peat, N.; Burchell, J.; Pemberton, L.; Lalani, E.N.; Wilson, D. Molecular cloning and expression of human tumor-associated polymorphic epithelial mucin. *J. Biol. Chem.* **1990**, *265*, 15286–15293. [[CrossRef](#)]
52. Govindarajan, B.; Gipson, I.K. Membrane-tethered mucins have multiple functions on the ocular surface. *Exp. Eye Res.* **2010**, *90*, 655–663. [[CrossRef](#)] [[PubMed](#)]
53. Linden, S.K.; Sutton, P.; Karlsson, N.G.; Korolik, V.; McGuckin, M.A. Mucins in the mucosal barrier to infection. *Mucosal Immunol.* **2008**, *1*, 183–197. [[CrossRef](#)] [[PubMed](#)]
54. Lindén, S.K.; Sheng, Y.H.; Every, A.L.; Miles, K.M.; Skoog, E.C.; Florin, T.H.J.; Sutton, P.; McGuckin, M.A. MUC1 Limits *Helicobacter pylori* Infection both by Steric Hindrance and by Acting as a Releasable Decoy. *PLoS Pathog.* **2009**, *5*, e1000617. [[CrossRef](#)] [[PubMed](#)]
55. Carson, D.D. The Cytoplasmic Tail of MUC1: A Very Busy Place. *Sci. Signal.* **2008**, *1*, pe35. [[CrossRef](#)]

-
56. Schmidt, P.; Dybal, J.; Trchová, M. Investigations of the hydrophobic and hydrophilic interactions in polymer–water systems by ATR FTIR and Raman spectroscopy. *Vib. Spectrosc.* **2006**, *42*, 278–283. [[CrossRef](#)]
 57. Wang, L.; Li, X.; Bruno, L.S.; Oppenheim, F.G.; Troxler, R.F.; Offner, G.D. MUC1 and MUC5B can form a protective mucin scaffold. In Proceedings of the 82nd IADR (International Association for Dental Research) General Session, Honolulu, HI, USA, 10–13 March 2004.

Disclaimer/Publisher’s Note: The statements, opinions and data contained in all publications are solely those of the individual author(s) and contributor(s) and not of MDPI and/or the editor(s). MDPI and/or the editor(s) disclaim responsibility for any injury to people or property resulting from any ideas, methods, instructions or products referred to in the content.