



**HAL**  
open science

## Gene networks controlling functional cell interactions in the pig embryo revealed by omics studies

Adrien Dufour, Cyril Kurylo, Jan B Stöckl, Yoann Bailly, Patrick Manceau, Frédéric Martins, Stéphane Ferchaud, Bertrand Pain, Thomas Fröhlich, Sylvain Foissac, et al.

### ► To cite this version:

Adrien Dufour, Cyril Kurylo, Jan B Stöckl, Yoann Bailly, Patrick Manceau, et al.. Gene networks controlling functional cell interactions in the pig embryo revealed by omics studies. EAAP Annual Meeting, EAAP, Aug 2023, Lyon, France. hal-04424850

**HAL Id: hal-04424850**

**<https://hal.inrae.fr/hal-04424850>**

Submitted on 29 Jan 2024

**HAL** is a multi-disciplinary open access archive for the deposit and dissemination of scientific research documents, whether they are published or not. The documents may come from teaching and research institutions in France or abroad, or from public or private research centers.

L'archive ouverte pluridisciplinaire **HAL**, est destinée au dépôt et à la diffusion de documents scientifiques de niveau recherche, publiés ou non, émanant des établissements d'enseignement et de recherche français ou étrangers, des laboratoires publics ou privés.



Distributed under a Creative Commons Attribution - NonCommercial - NoDerivatives 4.0 International License



➤ Gene networks controlling functional cell interactions in the pig embryo revealed by omics studies

Hervé Acloque

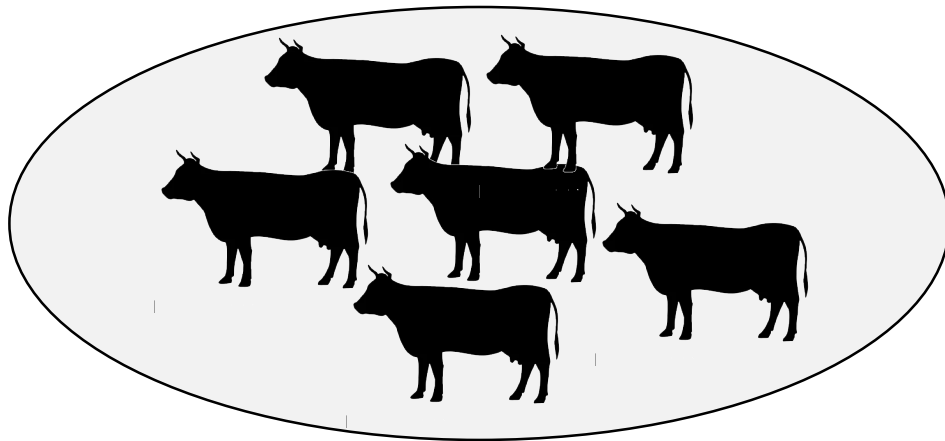
GABI Laboratory INRAE Jouy en Josas France

[herve.acloque@inrae.fr](mailto:herve.acloque@inrae.fr)

## ➤ Pluripotent stem cells in livestock: a platform for high throughput phenotyping

A challenge for animal production: phenotyping complex traits and predicting breeding values for those traits

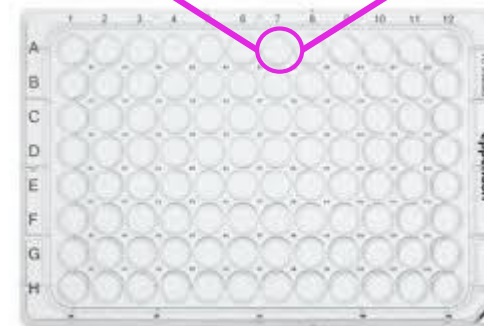
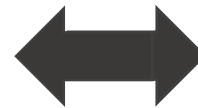
Reference population



**Phenotypes**

Genotypes

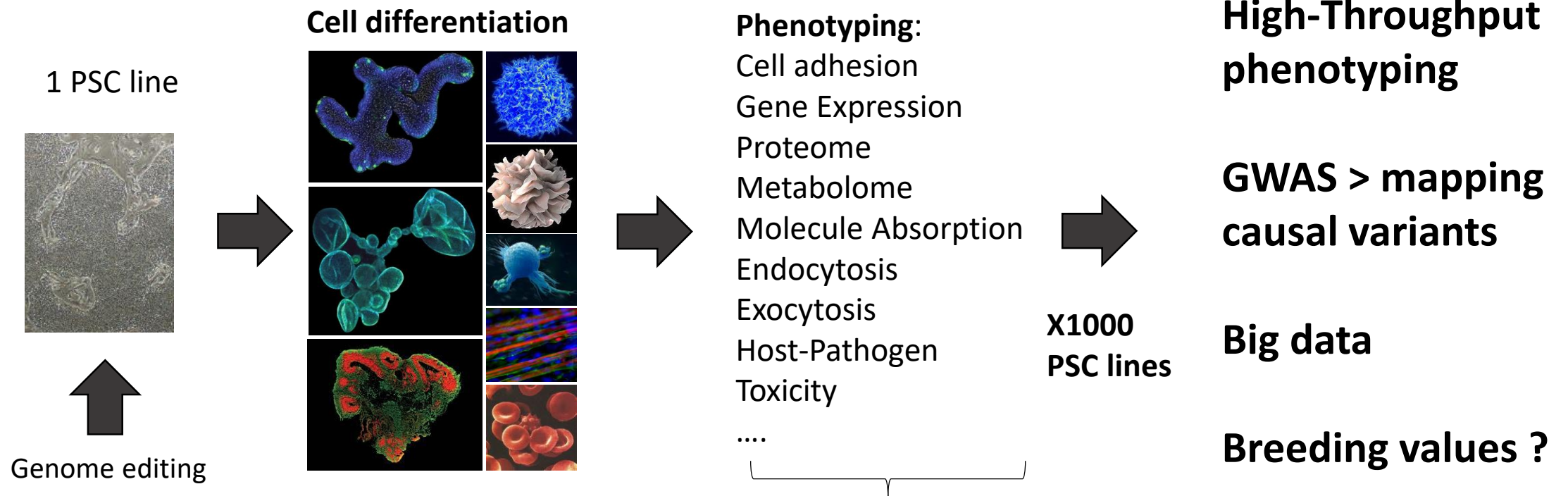
*In vitro* reference population (x1000) cell lines



Biobank of pluripotent stem cells

# ➤ Pluripotent stem cells in livestock: a platform for high throughput phenotyping

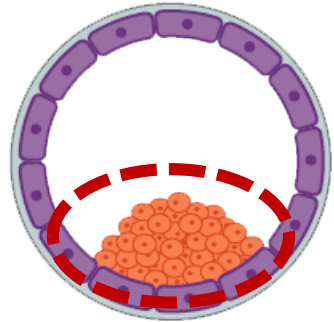
A challenge for animal production: phenotyping complex traits and predicting breeding values for those traits



Proxies or intermediate phenotypes not accessible on living animals



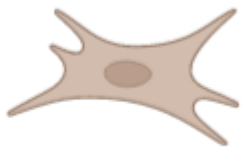
## ➤ Producing standardized true PSCs for livestock species is still challenging



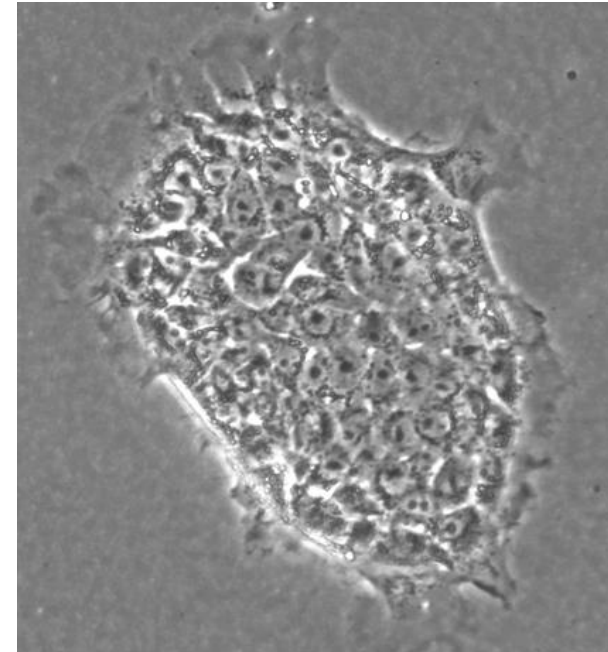
Amplification of **Epiblast cells**



**Chemically defined medium**

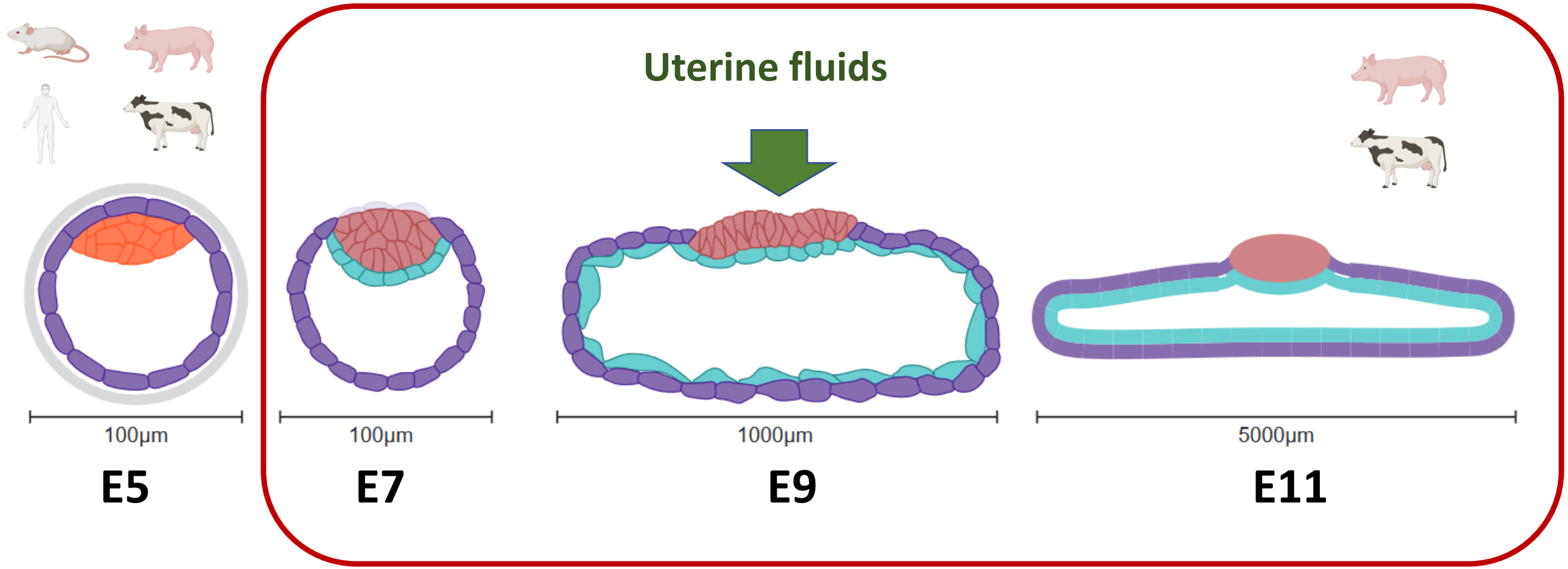


Reprogramming cocktail  
(OCT4, SOX2, KLF4, MYC)



Heterogeneity ?  
Stability overtime ?  
Differentiation potential ?

# ➤ What can we learn from the embryo ?



● Epiblast (pluripotent cells)    ■ Trophectoderm    ● Hypoblast



**INRAE**

Gene networks controlling functional cell interactions in the pig embryo  
29 August 2023 / EAAP meeting / Hervé Acloque

## ➤ Working hypothesis

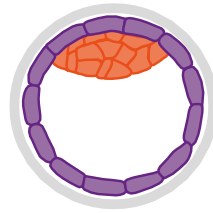


Paracrine regulations specific to pig embryonic development are not taken into consideration for the establishment of pig's pluripotent lines

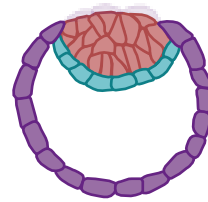


Embryonic regulatory networks are not necessarily conserved in mammals

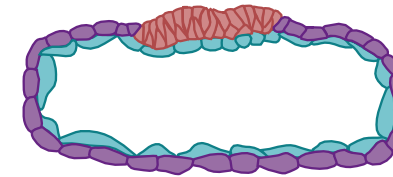
## ➤ Methods



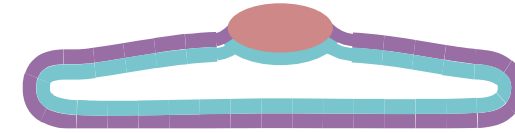
Early blastocyst **E5**



Hatched blastocyst **E7**



Spherical blastocyst **E9**



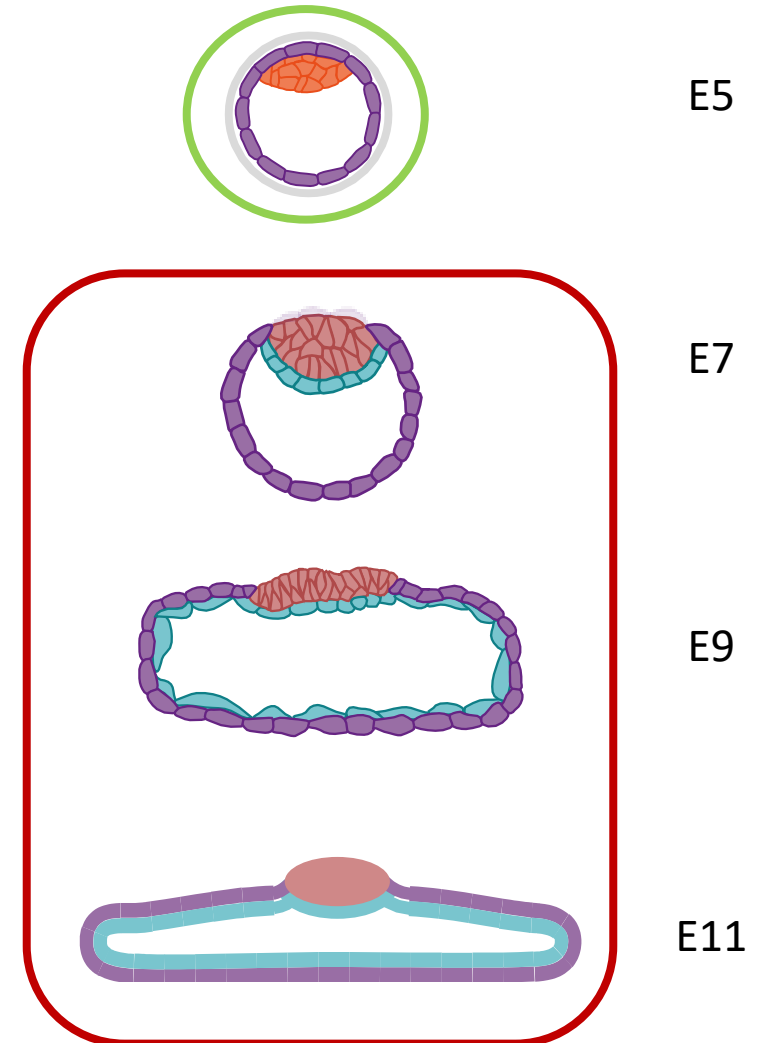
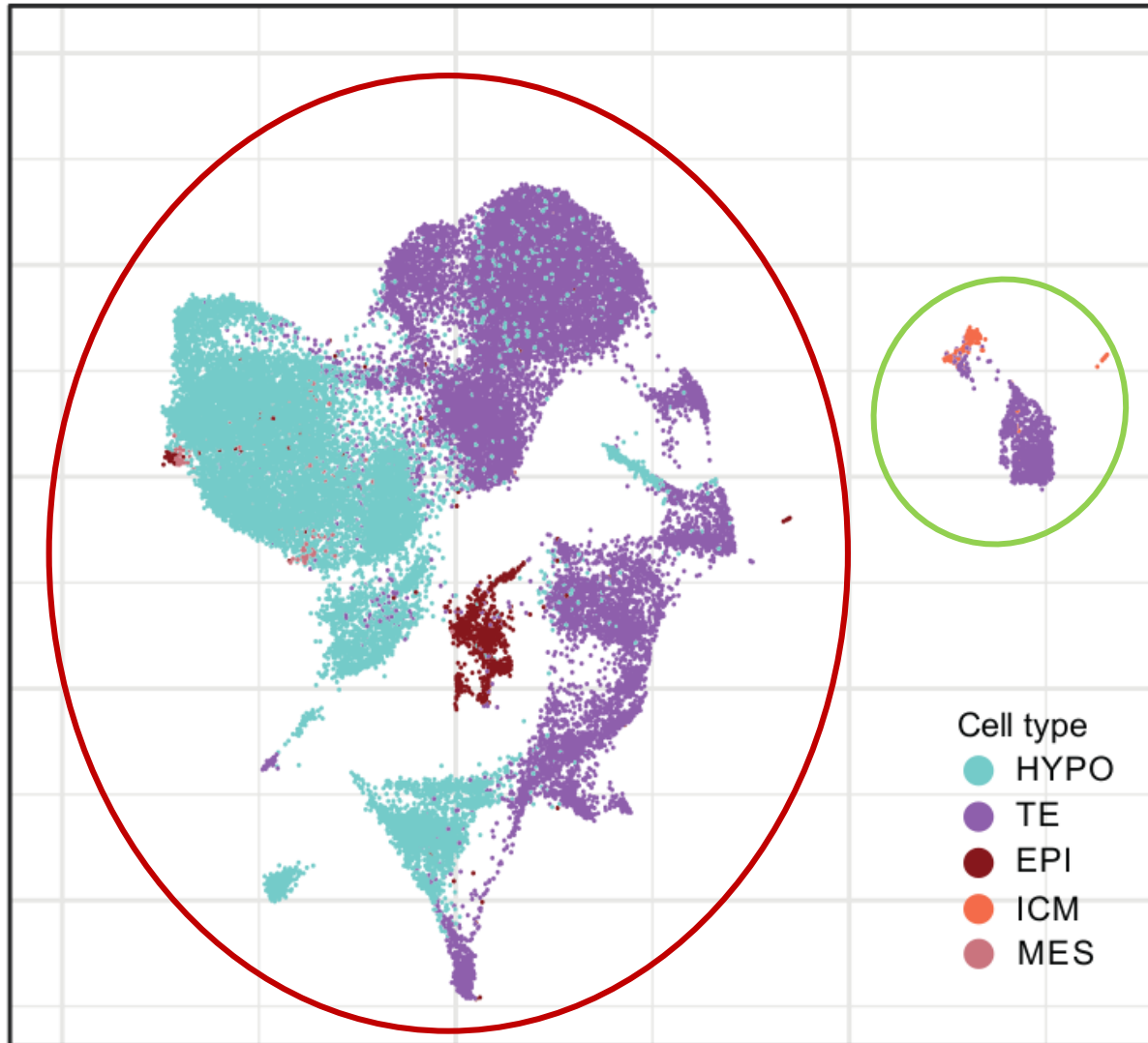
Ovoid blastocyst **E11**

Single-cell RNAseq	2 libraries (~2000 cells each)	4 libraries (~1000 cells each)	4 libraries (~3000 cells each)	2 libraries (~6000 cells each)
Uterine fluids	8 sows	4 sows	3 sows	3 sows
Single-cell multiomics (scATAC-seq + scRNA-seq)	0	1 library (~2000 cell's nucleus)	2 libraries (~4000 cell's nucleus)	4 libraries (~8000 cell's nucleus)



➤ scRNAseq allows the identification of cell populations constituting the embryo

UMAP of 34,888 cells

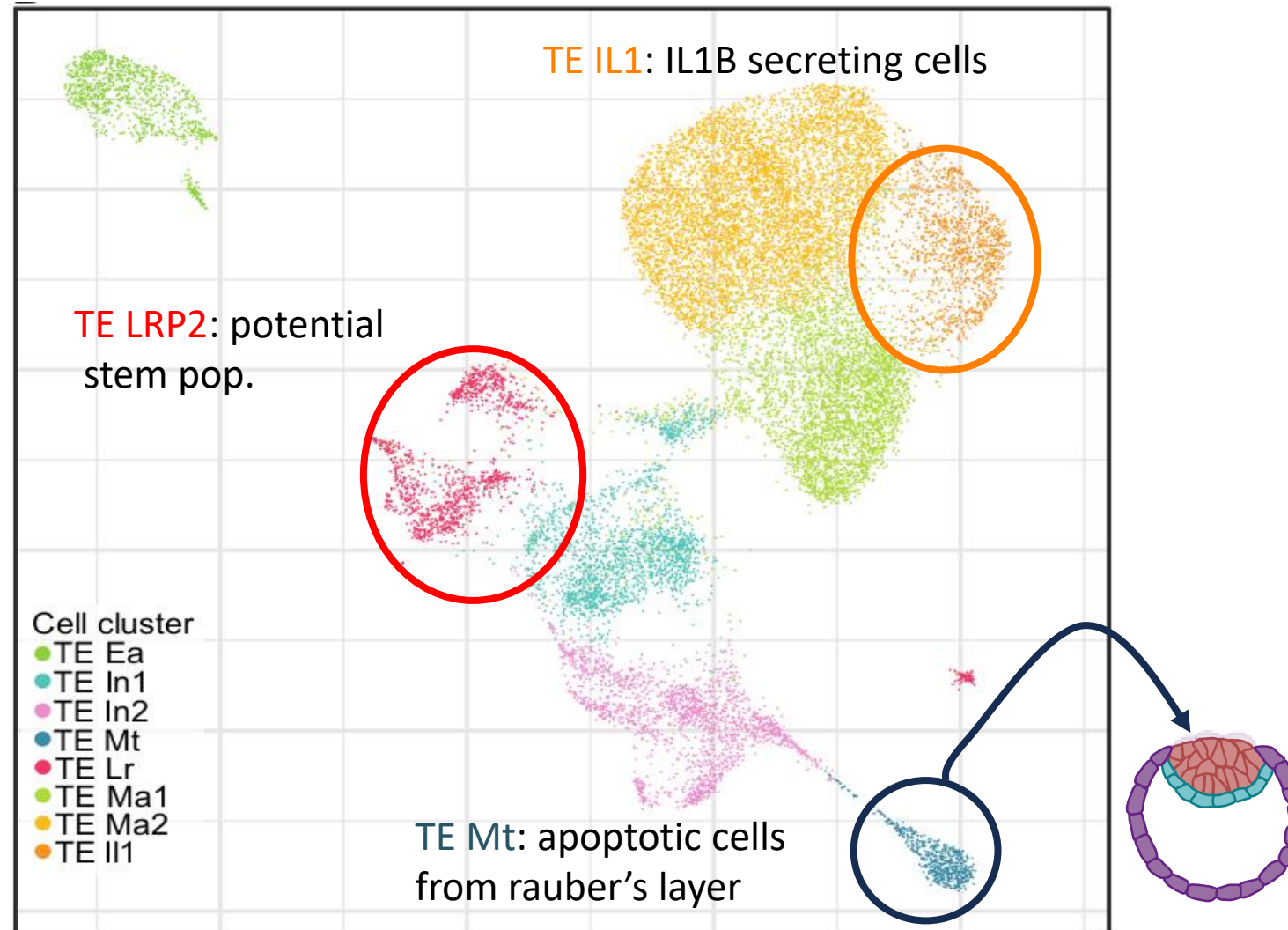


INRAE

➤ scRNAseq data provide cues to better understand the biology of the pig embryo

Identify new subpopulations

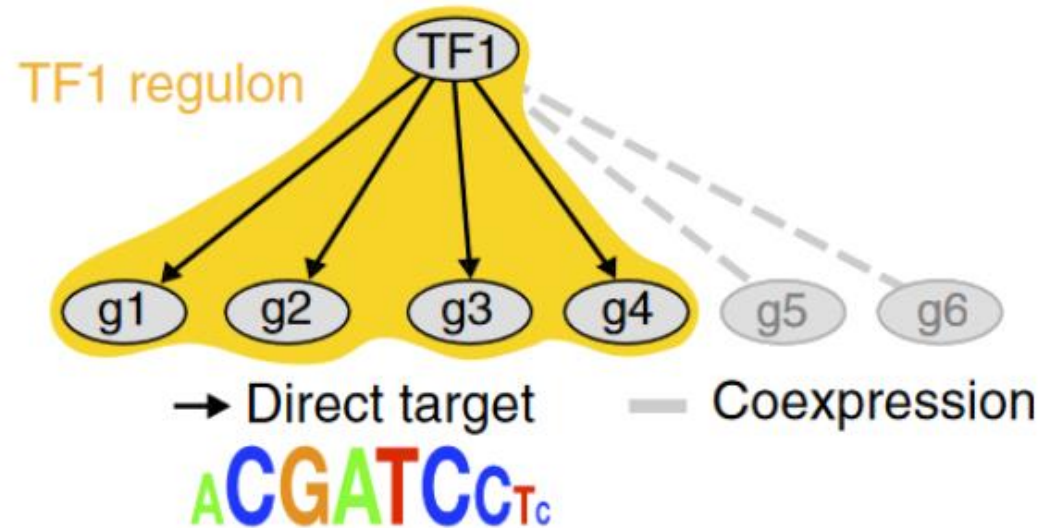
UMAP of 18,239 TE cells



- scRNAseq data provide cues to better understand the biology of the pig embryo

## Identify modules of gene regulation

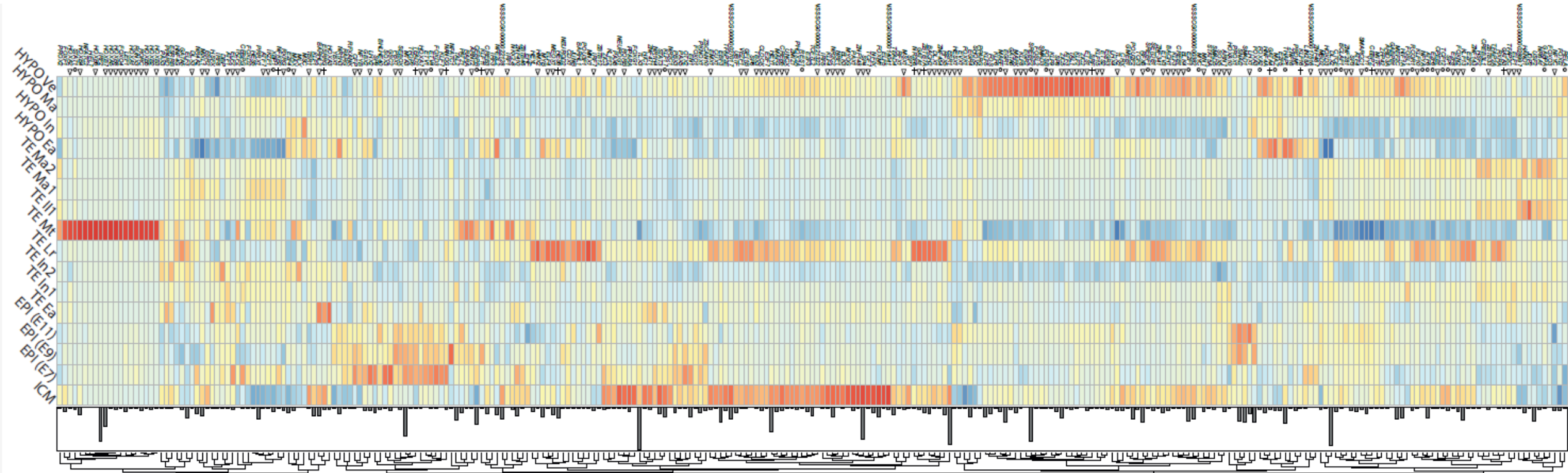
Regulons  
(gene regulatory network)



Aibar et al. 2017

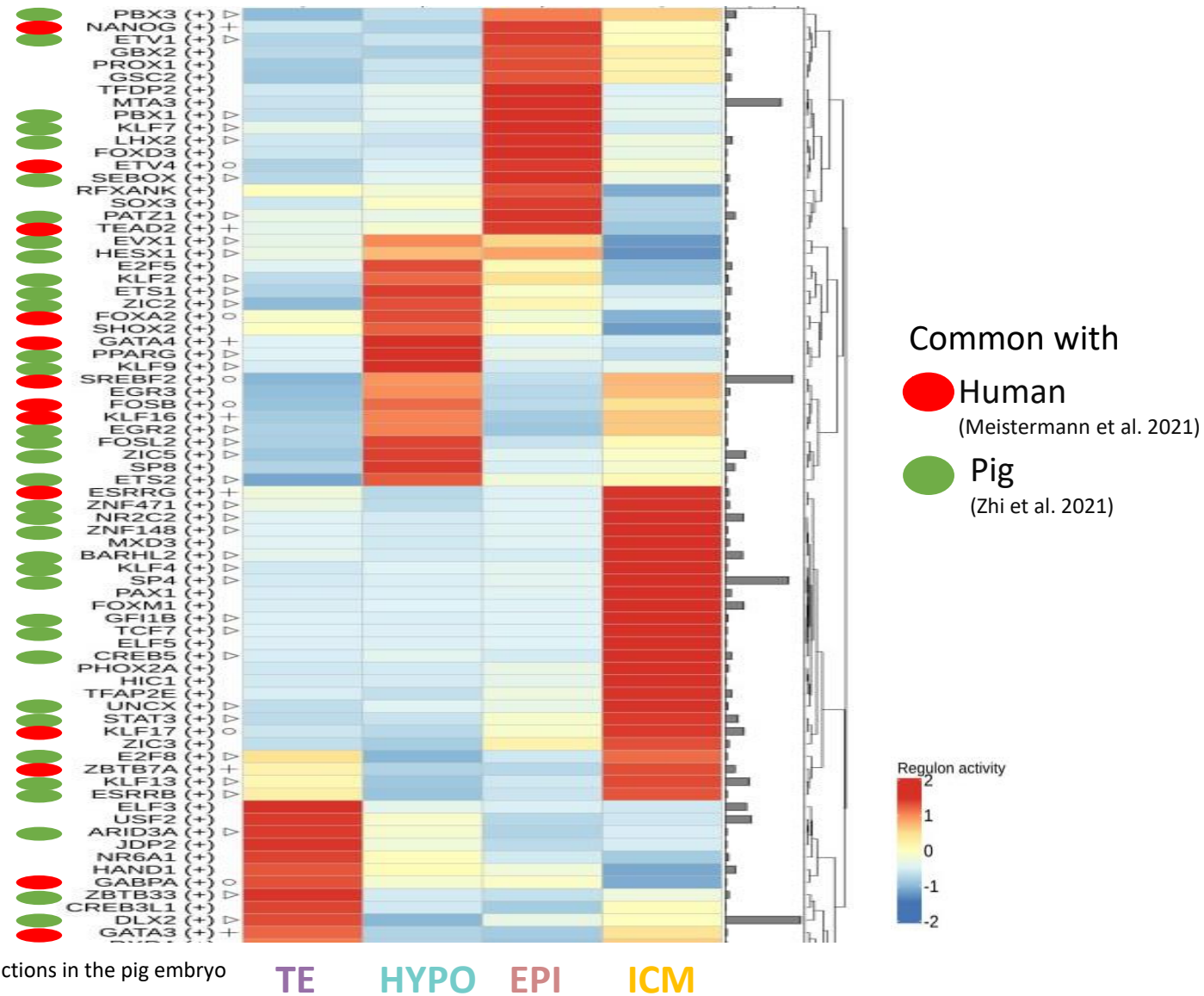
# ➤ scRNAseq data provide cues to better understand the biology of the pig embryo

## Identify modules of gene regulation

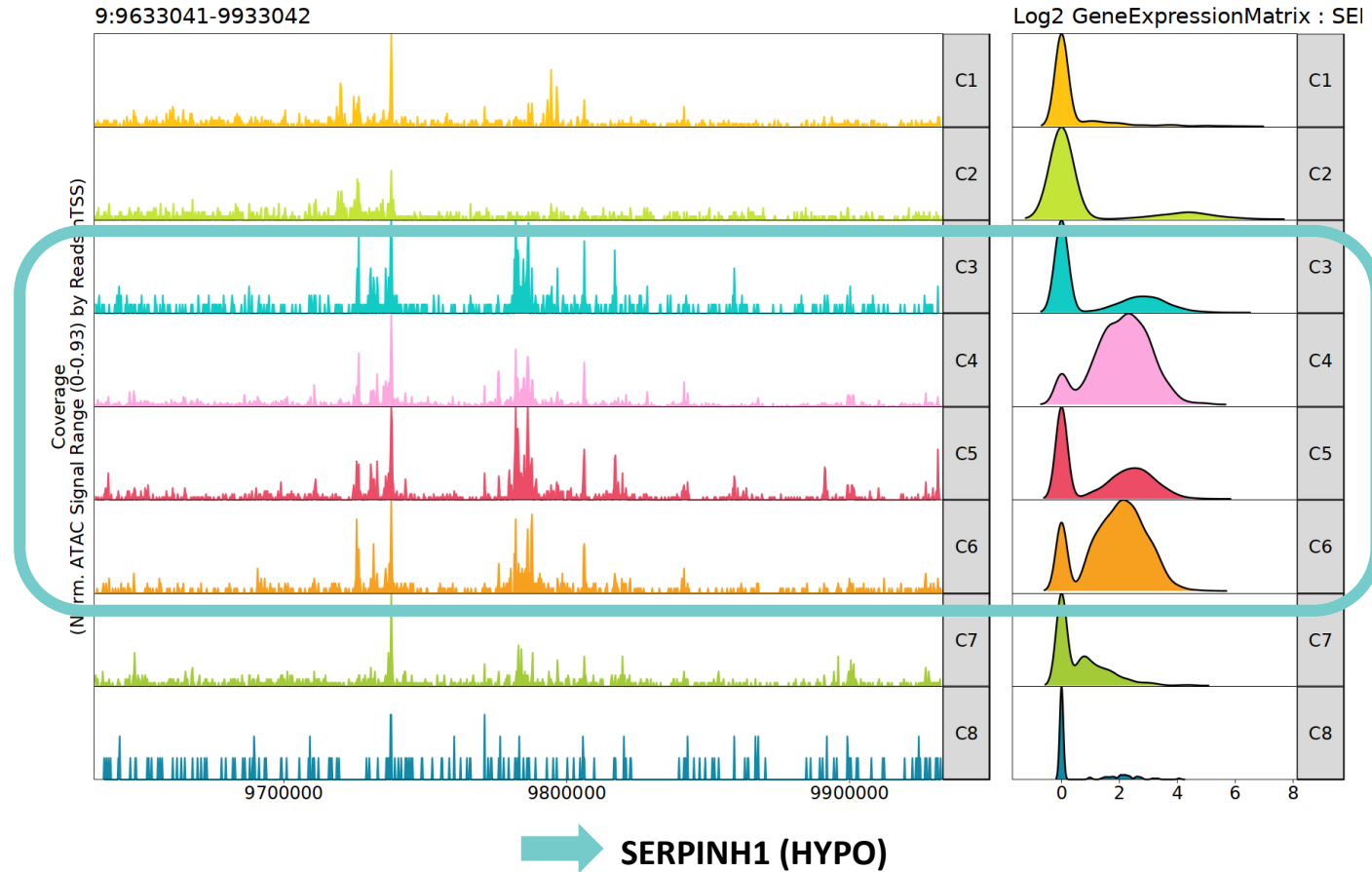
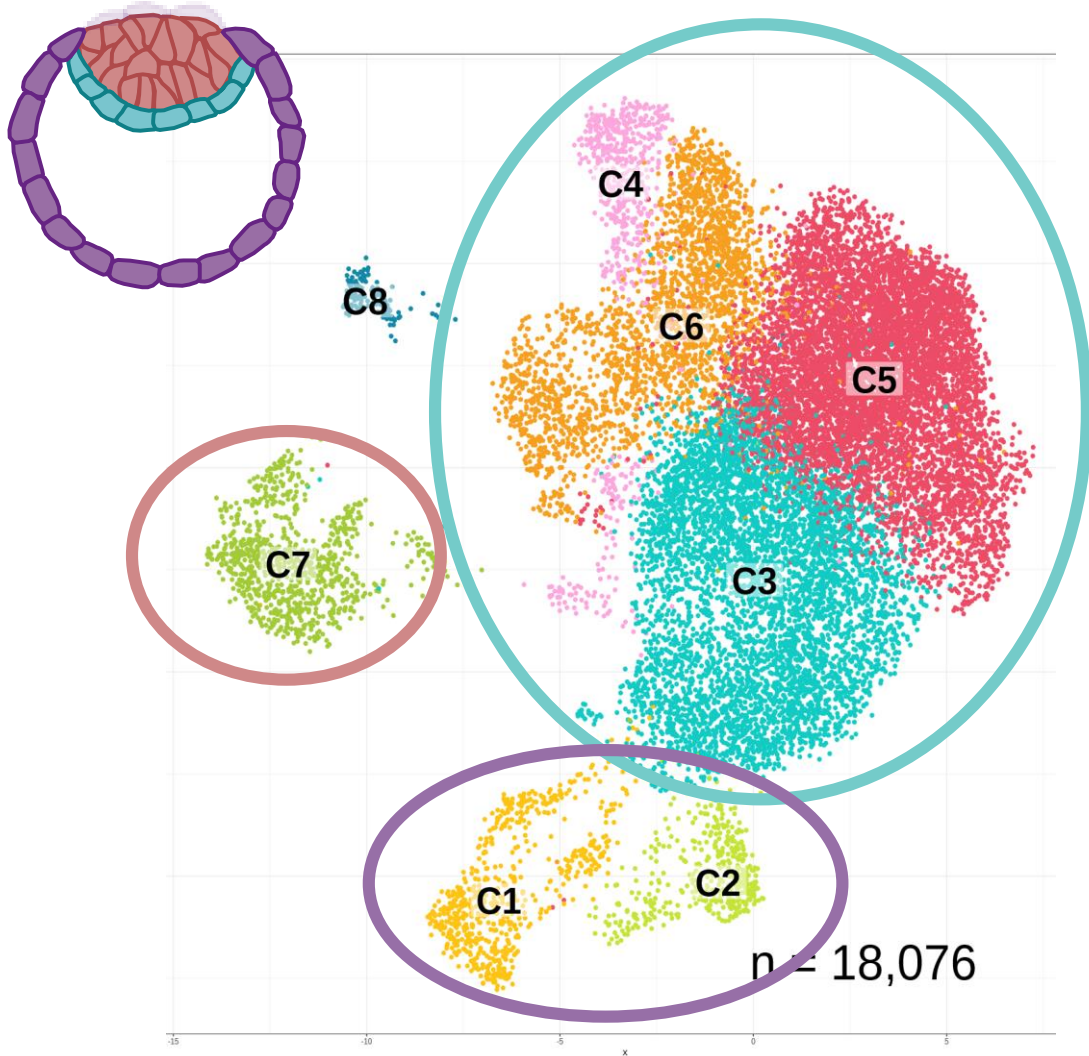


➤ scRNAseq data provide cues to better understand the biology of the pig embryo

## Identify modules of gene regulation

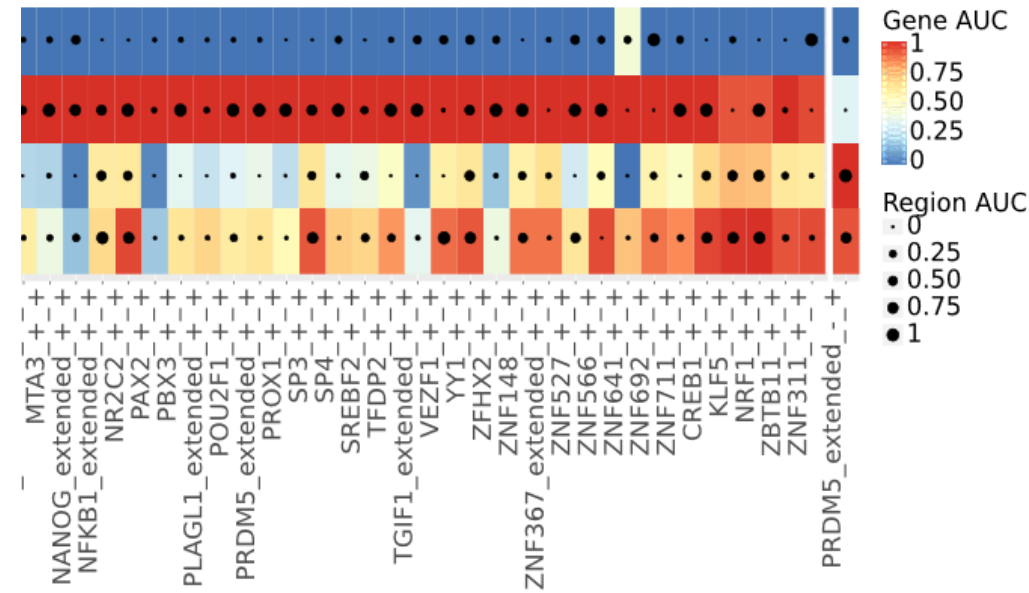
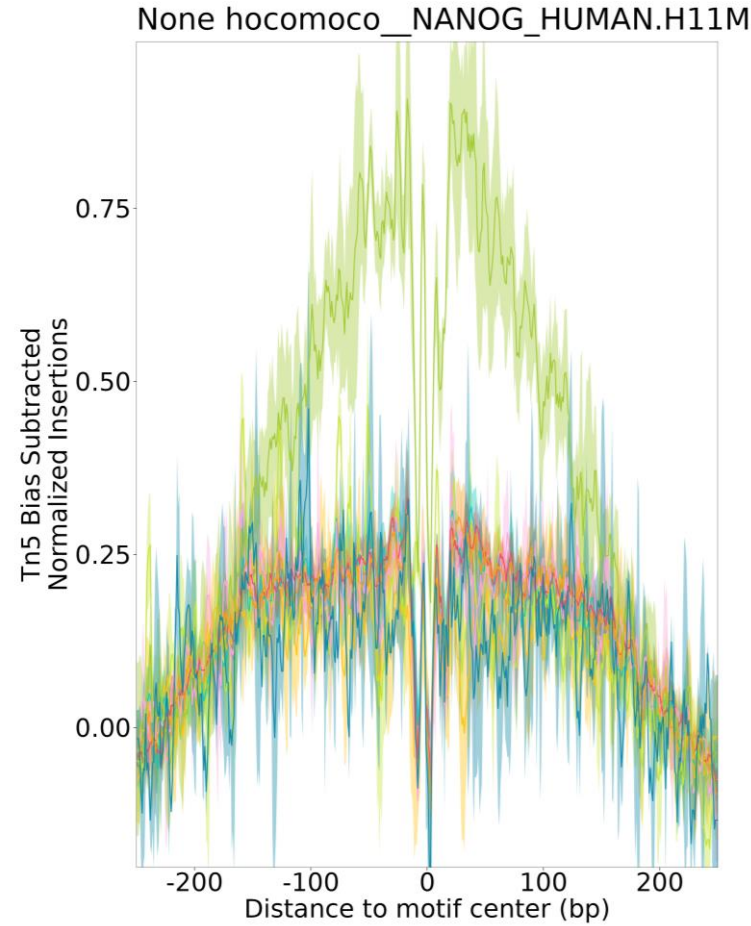
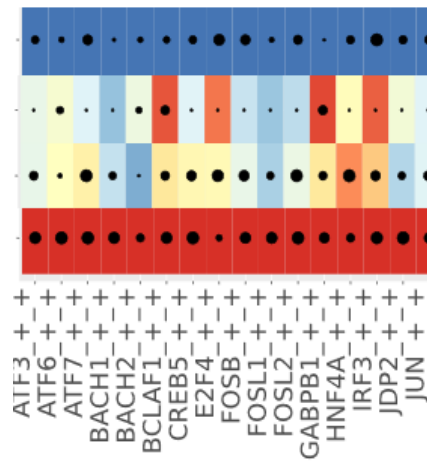
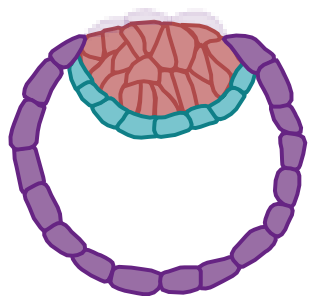


# ➤ scOMICS: adding a layer of information to refine module of gene regulation



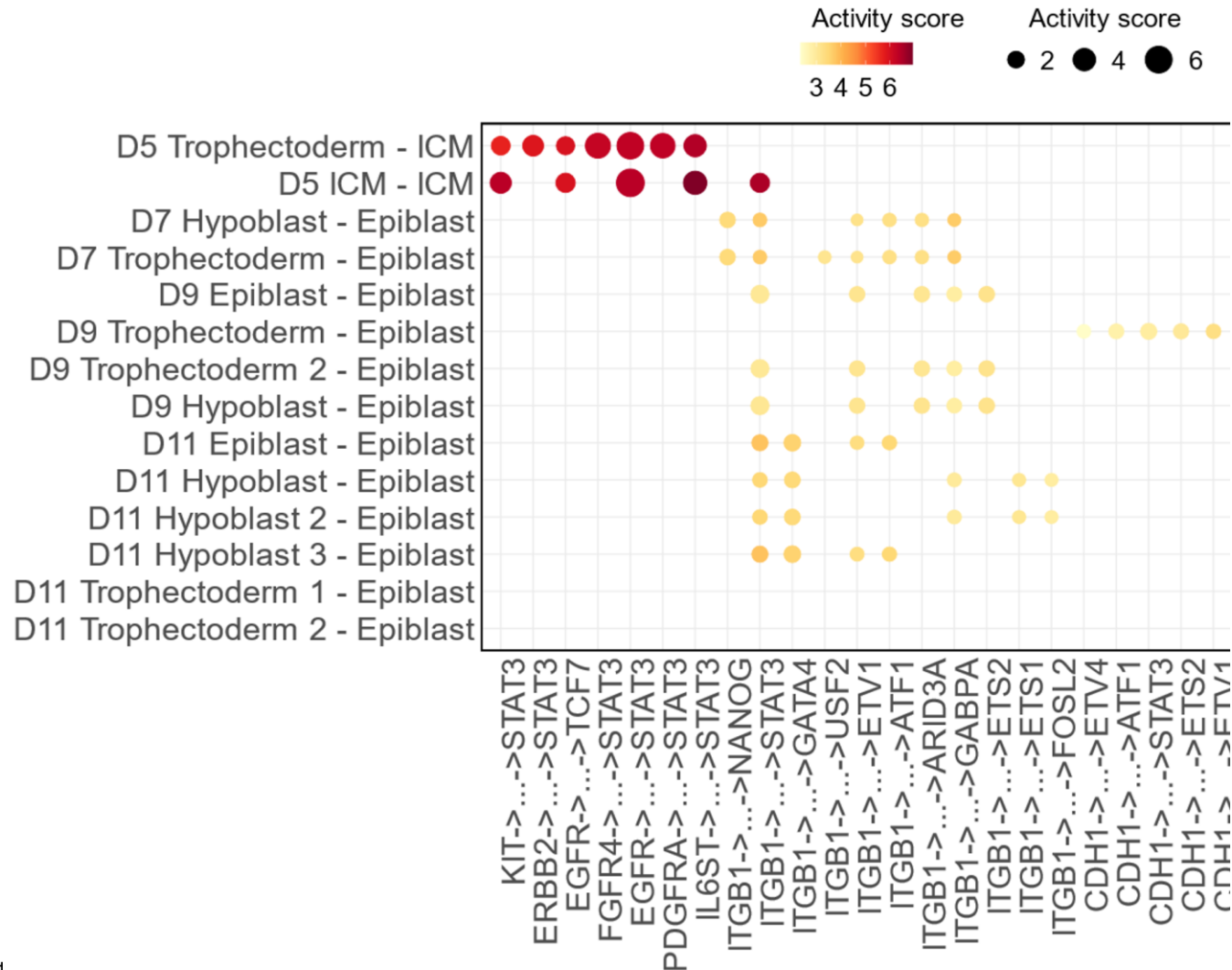
# ➤ Added value of omics data: selection of active regulons

TE  
EPI  
HYPO (early)  
HYPO (late)



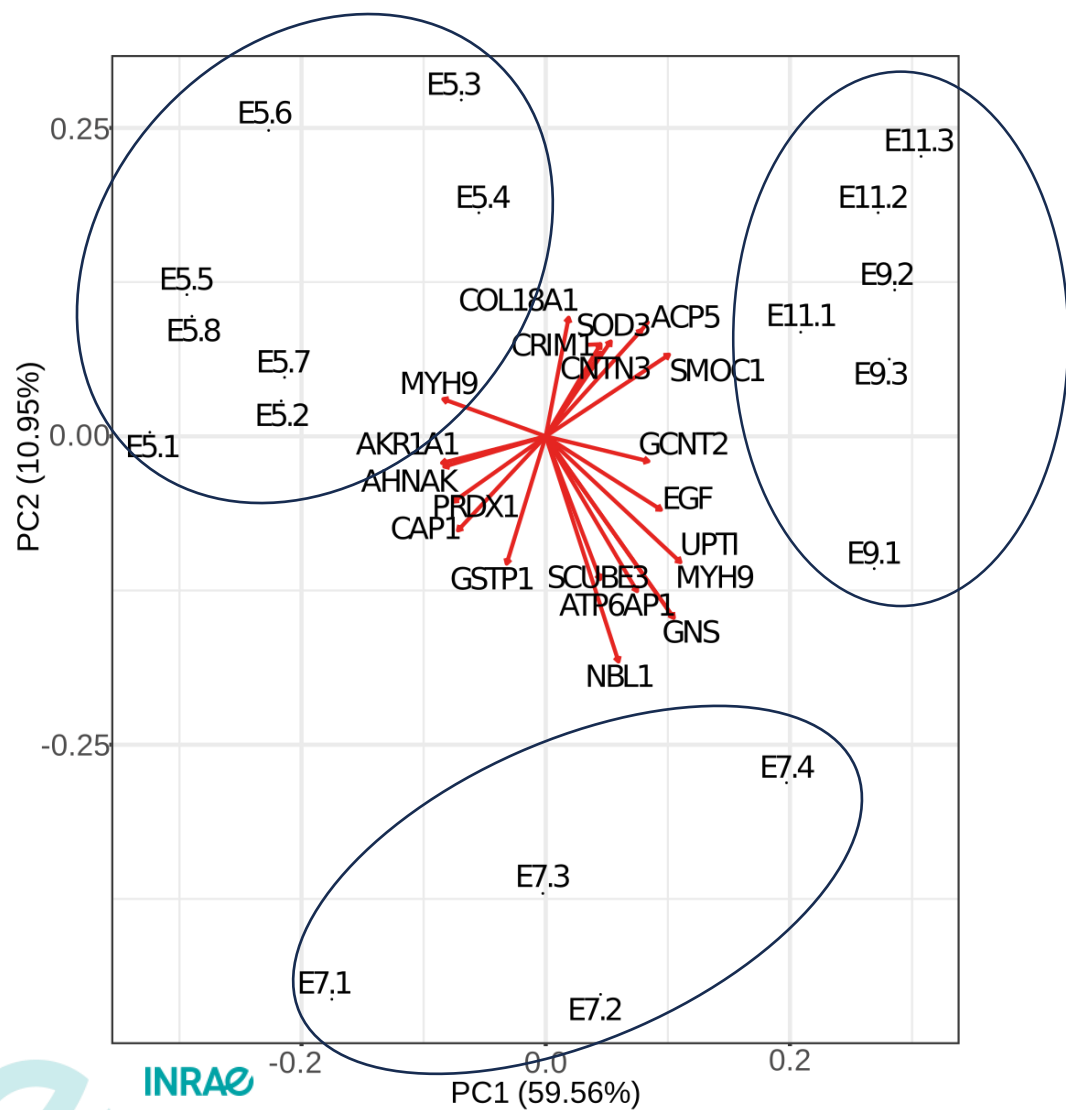
# ➤ scRNAseq data provide cues to better understand the biology of the pig embryo

## From ligand/receptor interactions to modules of gene regulation



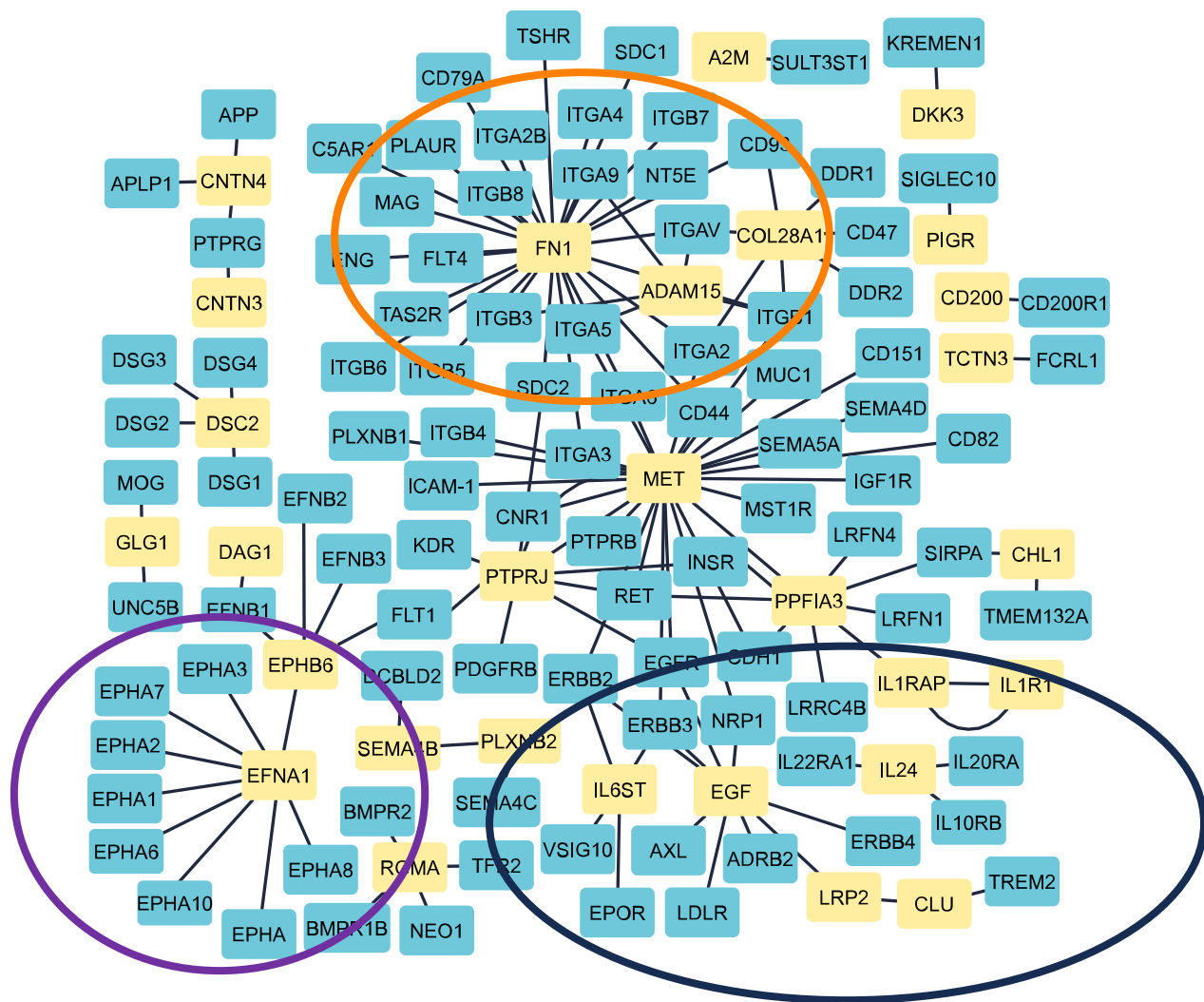


# ➤ Adding the fourth dimension: input from uterine fluids proteomics



INRAE

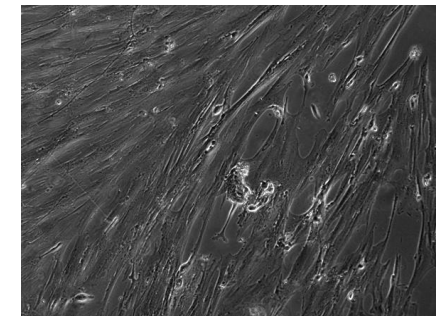
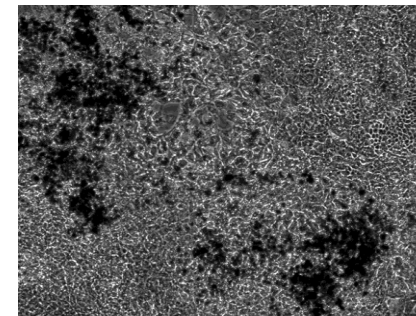
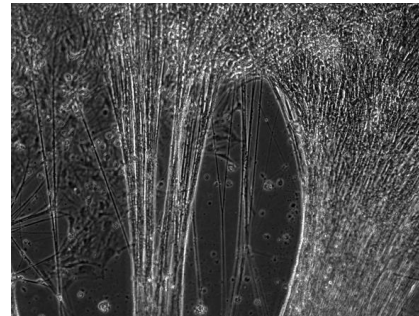
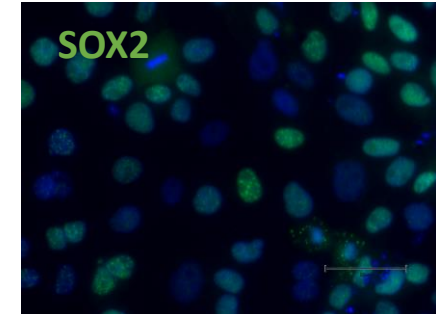
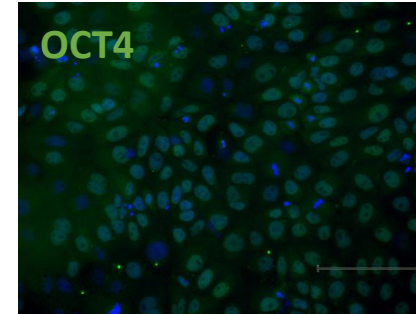
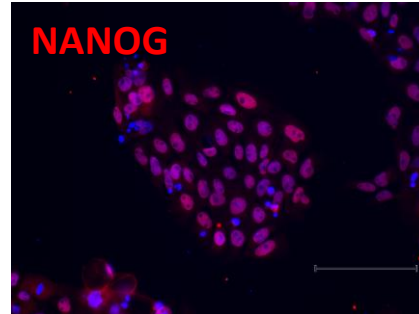
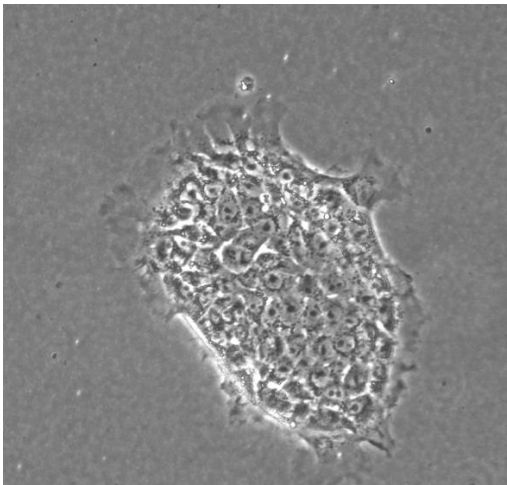
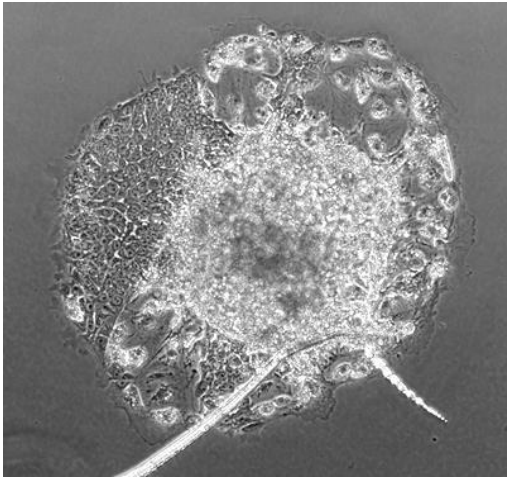
Dufour et al. submitted; <https://doi.org/10.1101/2023.05.30.542847>



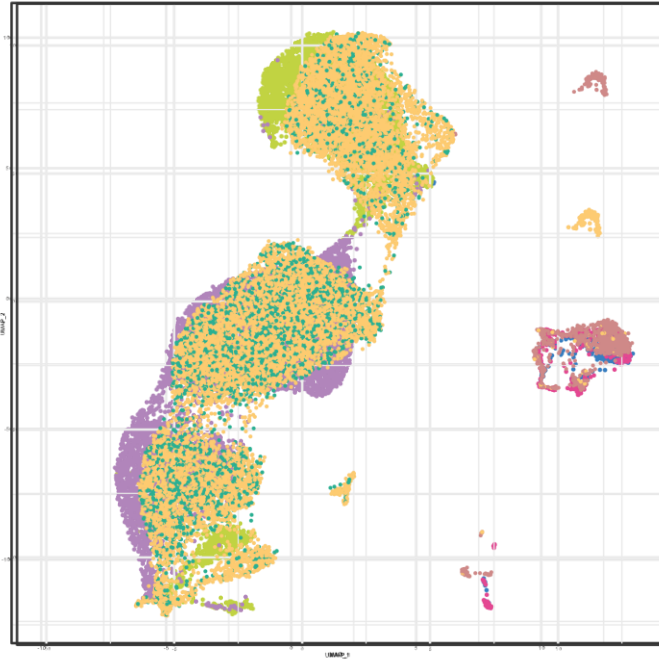
Interactions between **uterine fluid ligands** and **trophoblast receptors (E9/E11)**

# ➤ Omics plus-value: detection of poised states in pig ESCs

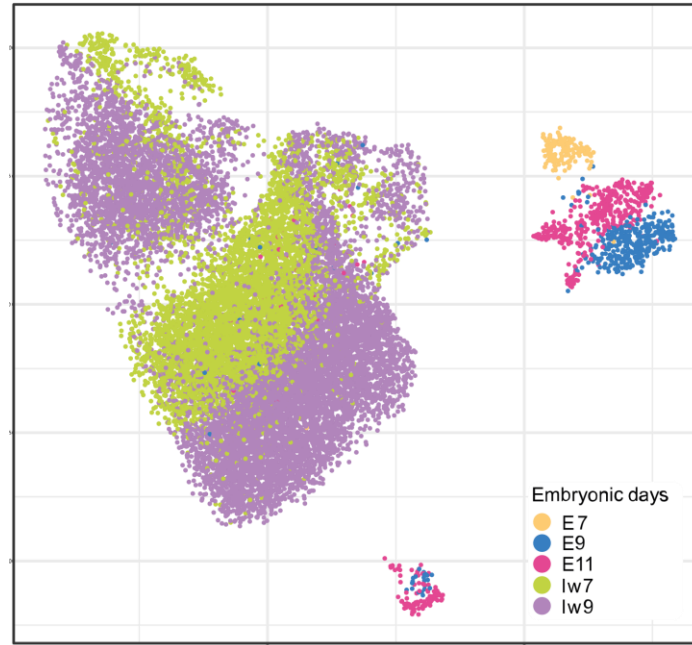
Pig ESCs



# ➤ Omics plus-value: detection of poised states in pig ESCs

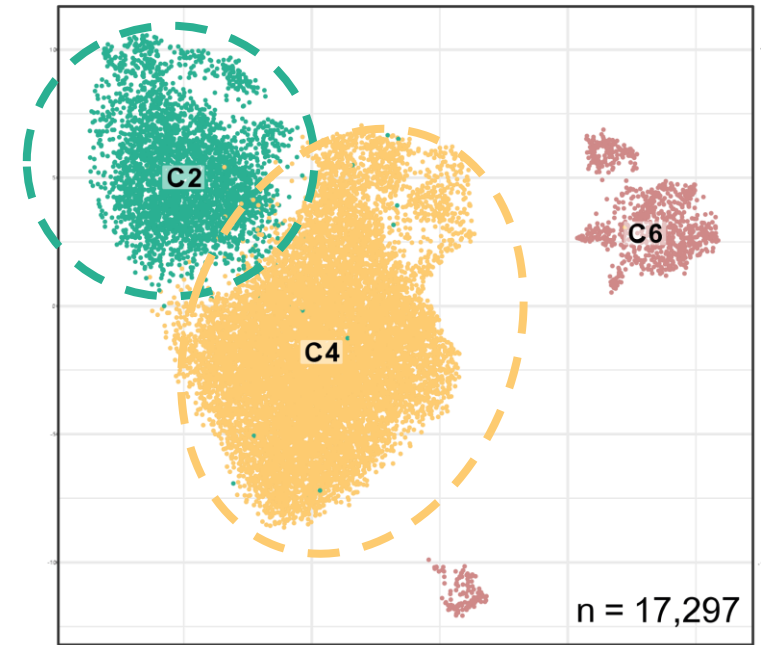


scRNAseq



scOMICS

Cells poised toward a neural fate



Cells poised toward non neural ectoderm & mesendoderm fate

## ➤ Conclusions

### **Added values of omics vs gene expression:**

- Identification of potential molecular interactions between embryonic cells and uterine fluids
- Better characterisation of gene regulatory networks at work in embryonic cells
- Validation of candidate regulons with motif footprints
- Detection of cell states not detectable by looking at gene expression only



## ➤ Acknowledgements

Special thanks to Adrien Dufour (PhD student) and to people from the GALAC team in Jouy en Josas,

And to our collaborators:

- Sylvain Foissac and Cyril Kurylo, GenPHYSE UMR1318 INRAE
- Jérôme Artus, UA09 Inserm
- Yoann Bailly, Patrick Manceau, Stéphane Ferchaud, UE GenESI INRAE
- Thomas Fröhlich, GeneZentrum LMU, Munich, Allemagne
- Ramiro Alberio, University of Nottingham, UK
- Frederic Martins and Claire Koechly, GeT-PlaGe, INRAE

Our funders:

