



HAL
open science

Development and characterization of a new sunflower source of resistance to race G of *Orobanche cumana* Wallr. derived from *Helianthus anomalus*

Belén Fernández-Melero, Lidia del Moral, Marco Todesco, Loren Rieseberg, Gregory Owens, Sébastien Carrère, Mireille Chabaud, Stéphane Muñoz, Leonardo Velasco, Begoña Pérez-Vich

► To cite this version:

Belén Fernández-Melero, Lidia del Moral, Marco Todesco, Loren Rieseberg, Gregory Owens, et al.. Development and characterization of a new sunflower source of resistance to race G of *Orobanche cumana* Wallr. derived from *Helianthus anomalus*. TAG Theoretical and Applied Genetics, 2024, 137 (3), pp.56. 10.1007/s00122-024-04558-4 . hal-04505694

HAL Id: hal-04505694

<https://hal.inrae.fr/hal-04505694>

Submitted on 15 Mar 2024

HAL is a multi-disciplinary open access archive for the deposit and dissemination of scientific research documents, whether they are published or not. The documents may come from teaching and research institutions in France or abroad, or from public or private research centers.

L'archive ouverte pluridisciplinaire **HAL**, est destinée au dépôt et à la diffusion de documents scientifiques de niveau recherche, publiés ou non, émanant des établissements d'enseignement et de recherche français ou étrangers, des laboratoires publics ou privés.



Distributed under a Creative Commons Attribution 4.0 International License



Development and characterization of a new sunflower source of resistance to race G of *Orobanche cumana* Wallr. derived from *Helianthus anomalus*

Belén Fernández-Melero¹ · Lidia del Moral¹ · Marco Todesco^{2,3} · Loren H. Rieseberg^{2,3} · Gregory L. Owens⁴ · Sébastien Carrère⁵ · Mireille Chabaud⁵ · Stéphane Muños⁵ · Leonardo Velasco¹ · Begoña Pérez-Vich¹

Received: 26 September 2023 / Accepted: 20 January 2024 / Published online: 22 February 2024

© The Author(s) 2024

Abstract

Key message A new *Or_{Anom1}* gene introgressed in cultivated sunflower from wild *Helianthus anomalus* confers late post-attachment resistance to *Orobanche cumana* race G and maps to a target interval in Chromosome 4 where two receptor-like kinases (RLKs) have been identified in the *H. anomalus* genome as putative candidates.

Abstract Sunflower broomrape is a parasitic weed that infects sunflower (*Helianthus annuus* L.) roots causing severe yield losses. Breeding for resistance is the most effective and sustainable control method. In this study, we report the identification, introgression, and genetic and physiological characterization of a new sunflower source of resistance to race G of broomrape developed from the wild annual sunflower *H. anomalus* (accession PI 468642). Crosses between PI 468642 and the susceptible line P21 were carried out, and the genetic study was conducted in BC₁F₁, BC₁F₂, and its derived BC₁F₃ populations. A BC₁F₅ germplasm named ANOM1 was developed through selection for race G resistance and resemblance to cultivated sunflower. The resistant trait showed monogenic and dominant inheritance. The gene, named *Or_{Anom1}*, was mapped to Chromosome 4 within a 1.2 cM interval and co-segregated with 7 SNP markers. This interval corresponds to a 1.32 Mb region in the sunflower reference genome, housing a cluster of receptor-like kinase and receptor-like protein (RLK-RLP) genes. Notably, the analysis of the *H. anomalus* genome revealed the absence of RLPs in the *Or_{Anom1}* target region but featured two RLKs as possible *Or_{Anom1}* candidates. Rhizotron and histological studies showed that *Or_{Anom1}* determines a late post-attachment resistance mechanism. Broomrape can establish a vascular connection with the host, but parasite growth is stopped before tubercle development, showing phenolic compounds accumulation and tubercle necrosis. ANOM1 will contribute to broadening the genetic basis of broomrape resistance in the cultivated sunflower pool and to a better understanding of the molecular basis of the sunflower-broomrape interaction.

Communicated by Brent Hulke.

✉ Begoña Pérez-Vich
bperez@ias.csic.es

¹ Instituto de Agricultura Sostenible (IAS-CSIC), Alameda del Obispo S/N, 14004 Córdoba, Spain

² Department of Botany, University of British Columbia, Vancouver, BC V6T 1Z4, Canada

³ Biodiversity Research Centre, University of British Columbia, Vancouver, BC V6T 1Z4, Canada

⁴ Department of Biology, University of Victoria, Victoria, BC V8W 2Y2, Canada

⁵ Laboratoire des Interactions Plantes Microbes-Environnement (LIPME), Université de Toulouse, CNRS, INRAE, Castanet-Tolosan, France

Abbreviations

cM	CentiMorgans
Chr	Chromosome
LRR	Leucine-rich repeat
RING	Really interesting new gene
RLK	Receptor-like kinase
RLP	Receptor-like protein
SWEET	Sugars will eventually be exported transporters
UPS	Ubiquitin–proteasome system

Introduction

Sunflower resistance to the parasitic weed *Orobanche cumana* Wallr., commonly known as sunflower broomrape, is mainly controlled by single genes showing major and dominant effects (Fernández-Martínez et al. 2015). The

parasite virulence is also determined by dominant avirulence alleles at single loci (Rodríguez-Ojeda et al. 2013), following a gene-for-gene interaction scheme that leads to the emergence of different physiological races of the parasite, which can evolve in response to the host's resistance mechanisms (Imerovski et al. 2016).

Although some studies have already been carried out, knowledge of the genomic location and physiological function of sunflower major genes conferring resistance to broomrape is still limited. Duriez et al. (2019) identified the *HaOr7* gene conferring resistance to sunflower race F, mapping it to Chromosome (Chr) 7 and showing that it encodes a leucine-rich repeat (LRR) receptor-like kinase. Fernández-Aparicio et al. (2022) located the *Or_{Deb2}* gene, which confers resistance to broomrape race G, in a genomic interval of Chr 4 containing a cluster of genes encoding LRR-receptor like proteins (RLPs) lacking a cytoplasmic kinase domain, and receptor-like kinases (RLKs) with one or two kinase domains and lacking an extracellular LRR region. Additionally, Martín-Sanz et al. (2020) mapped the *Or_{SII}* gene that provides late post-attachment resistance to broomrape races F and G to the same region of Chr 4. However, no comparative analysis of these resistance sources has been performed yet.

Other studies have identified the position of additional resistance genes, such as *Or5* gene conferring resistance to broomrape race E in the upper region of Chr 3 (Tang et al. 2003; Pérez-Vich et al. 2004). This region was also found to be a hotspot for resistance to more virulent populations (races F and G) in studies using QTL detection (Imerovski et al. 2019) and GWAS (Calderón-González et al. 2023). Furthermore, Imerovski et al. (2019) and Calderón-González et al. (2023) identified a second genomic region on Chr 3 associated with broomrape resistance, and Calderón-González et al. (2023) found potential genetic associations with broomrape resistance on Chrs 5, 10, 13, and 16. The biological function of these QTL and/or minor genes remains to be elucidated, although recent studies pointed the possible role in modulating sunflower *O. cumana* resistance responses of SWEET (Sugars Will Eventually be Exported Transporters) sugar transporter genes (Calderón-González et al. 2023), transcription factors of the basic leucine zipper family (Li et al. 2023) or genes involved in the biosynthesis of monophenols (4CL2 4-coumarate-CoA ligase (2) or basal defence regulation and salicylic acid signalling activation (EDS1, enhanced disease susceptibility 1) (Huang et al. 2022).

Sunflower broomrape virulence evolves rapidly. This parasitic weed has a high capacity of dispersion and mutation. Individual broomrape plants produce thousands of tiny seeds that are easily dispersed by wind and other agents, including sunflower seeds, to which broomrape seeds can be found attached (Fernández-Martínez et al.

2015). Vertical resistance mechanisms based on major genes described above have been repeatedly surpassed by the parasite (Fernández-Martínez et al. 2015). Consequently, breeders are constantly searching for new sources of resistance. Wild *Helianthus* species are a major reservoir of genes controlling resistance to the new virulent races of *O. cumana* (Christov et al. 2009; Seiler and Jan 2014; Chabaud et al. 2022). To ensure suitable sunflower production in areas affected by broomrape, identification and characterization of new genes conferring resistance to this parasitic weed are needed. The objectives of the present study were to (i) identify germplasm accessions of the wild annual sunflower species *H. anomalus* with resistance to broomrape race G and introgress the resistance into cultivated sunflower, (ii) carry out the genetic analysis of the resistance, including allelic crosses with the previously developed DEB2 line (Velasco et al. 2012), which also exhibits resistance to sunflower broomrape race G, (iii) develop a linkage map including the putative *Or* resistance gene using publicly SNP markers and new SNPs developed in this study, (iv) identify candidate genes underlying the resistance gene based on the *H. anomalus* chromosome level genome sequence, and (v) characterize the resistance mechanisms in the new developed material.

Materials and methods

Evaluation of *H. anomalus* accessions for resistance to sunflower broomrape and introgression of resistance into cultivated sunflower

Two accessions of *H. anomalus* S.F. Blake were provided in 2001 by the National Plant Germplasm System (NGPS) of the United States Department of Agriculture (USDA). The accessions were identified as PI 468638 (ANO-1495) and PI 468642 (ANO-1506), respectively. They were initially used for tocopherol analysis of the seeds (Velasco et al. 2003) and in 2014 for resistance to sunflower broomrape race G. The race G broomrape population (named GT) was collected in Çeşmekolu, Kirklareli Province, Turkey, in 2000. We used the Turkish population because no sunflower broomrape race G existed at the beginning of the research in the Guadalquivir Valley area, where the research was conducted. Shortly after, we identified race G populations in the area (Martín-Sanz et al. 2016), but since the study had been started with the Turkish population, the new Spanish race G populations had not been characterized yet in detail, and the amount of seed available was still very low, we decided to complete the study with the race G population from Turkey.

Seeds of the *H. anomalus* accessions were treated with gibberellic acid 1 mM for 1 h, then rinsed three times

with water and maintained in a Petri dish with moistened filter paper in the dark at 25 °C until they germinated. The plantlets were planted in small pots 7×7×7 cm filled with sand and peat and 30 mg of race G broomrape seeds. They were kept in a growth chamber at 25 °C / 20 °C (day/night) with 16 h photoperiod for eight weeks. After this time, they were transplanted into 6 L pots containing a soil mixture of sand, silt, and peat in a proportion 2:1:1 by volume and 8 g of NPK controlled release fertilizer Nutricote® 15–9–10 (2MgO) + ME. The pots were maintained in a greenhouse without control of temperature. Three plants of accession PI 468638 and four plants of accession PI 468642 reached flowering. None of them showed emerged broomrape shoots. Pollen from plants of each accession was used to pollinate male-sterile flowers of the nuclear male-sterile line P21 (Pérez-Vich et al. 2005), which is susceptible to race E (Pérez-Vich et al. 2004), race F (Pérez-Vich et al. 2002, 2004; Velasco et al. 2007; Akhtouch et al. 2008), and race G (this study) of *O. cumana*. *H. anomalus* plants were very weak and produced few small flowers. They were all self-incompatible, i.e. did not produce seeds under self-pollination conditions.

F₁ seeds were sown following the same procedures described above, resulting in eight F₁ plants for each of the accessions. All the F₁ plants from the cross with PI 468638 showed emerged broomrape plants, whereas three out of the eight F₁ plants from the cross with accession PI 468642 showed an absence of broomrape emergence at the flowering time. They were used to pollinate male-sterile plants of P21. The resistant F₁ plants were bagged for self-fertilization, but they produced no seeds. Accordingly, BC₁F₁ seeds from a single backcross were sown in 2017 as described above, resulting in 12 resistant plants showing no broomrape emergence and 12 susceptible plants showing between 3 and 16 emerged broomrape shoots per plant. Resistant plants were self-pollinated and used for an additional backcross with P21. However, some of the BC₁F₁ plants produced many seeds, which were used for the genetic study.

Genetic study of resistance and development of the resistant germplasm ANOM1

A population of 242 BC₁F₂ seeds was used for the genetic study. They were sown as described above, except for treating with gibberellic acid, and grown in pots under open-air conditions in the summer of 2017, resulting in 234 BC₁F₂ plants that reached maturity and could be evaluated for the presence/absence of broomrape parasitization. BC₁F₃ seeds from resistant BC₁F₂ plants were used to confirm the resistance and separation of homogenously resistant and segregating families. This was performed in pots under open-air conditions in the summer of 2019 using 9 individual BC₁F₃ plants per family, following the same procedures as in

the BC₁F₂ evaluation. After a preliminary genetic mapping analysis, 10 BC₁F₃ families for which it was detected a discrepancy between the expected phenotype based on the genotypic class inferred from marker data and the results observed in the phenotypic evaluation of resistance were evaluated again for resistance/susceptibility to broomrape race G in the summer of 2021 using additional 12 BC₁F₃ plants per family and the same procedures as in the initial evaluation. BC₁F₄ plants from 6 resistant BC₁F₃ families, selected for visual resemblance to cultivated sunflower, seed production, and seed size, were also grown in 2021 to form the germplasm ANOM1 after confirmation of broomrape resistance at the individual plant level.

In all cases, the susceptible parent P21 and the resistant line DEB2 were used as controls. In all evaluations, sunflower plants were classified as resistant if they showed no emerged broomrape shoots and susceptible if they showed at least one emerged broomrape shoot. This is a common procedure in sunflower evaluation for broomrape resistance since the trait is commonly controlled by alleles at loci with major effects that determine the absence of emergence of broomrape shoots (Škorić et al. 2021).

Allelic crosses

Allelic crosses between ANOM1 and the genotype DEB2 previously developed by our research group (Velasco et al. 2012) and carrying the gene *Or_{Deb2}* which also confers resistance to race G of broomrape (Velasco et al. 2012; Fernández-Aparicio et al. 2022) were carried out. A total of 3018 F₂ plants coming from 27 F₁ plants from the allelic cross between ANOM1 and DEB2 were grown in 2021 and 2022 in pots under open-air conditions and evaluated for race G (population GT) resistance as described above.

Performance of the new germplasm ANOM1 against other broomrape populations

The germplasm ANOM1 was also evaluated with sunflower broomrape populations representative of the two races currently present in the Guadalquivir Valley area, where the research was conducted. They were broomrape population SP, a conventional race-F population of the Guadalquivir Valley gene pool (Martín-Sanz et al. 2016), and population IN180, collected in 2016 in Villanueva del Rey (Seville Province), and classified as race G. The evaluation was conducted in pots in winter 2021–2022 in the greenhouse and in summer 2022 under open-air conditions using sunflower lines NR5 and DEB2 (Martín-Sanz et al. 2016) as controls and 16 individual plants for each combination of broomrape population and sunflower germplasm. Procedures for soil preparation and inoculation were the same as described above.

Tissue collection, DNA extraction, plant genotyping and gene mapping

Two fully expanded young leaves from each of the 234 BC₁F₂ plants of the mapping population were cut and frozen at −80 °C to be used for gDNA extraction. The leaf tissue was lyophilized and ground in a laboratory mill. gDNA was extracted as described in Pérez-Vich et al. (2004).

A set of 192 SNP markers developed and mapped by Bachlava et al. (2012) and Bowers et al. (2012), identified by SFW prefixes and evenly distributed across the 17 sunflower chromosomes, was genotyped in the mapping population using competitive allele-specific PCR assays based on KASP™ technology (LGC genomics, Teddington, Middlesex, UK). In an initial genetic linkage analysis, only polymorphic markers from Chr 4 were linked to the resistance gene. Based on these results, we additionally genotyped the mapping population with 7 SNP-AXIOM markers (AX-prefix) closely linked to broomrape resistance gene *Or_{Deb2}*, previously mapped in Chr 4 (Fernández-Aparicio et al. 2022), and a set of SNP markers developed for *Or_{Deb2}* fine mapping (prefix Iasnip in the interval from 17 to 47) (Table S1, listed those that proved effective in the course of this research), using the same approach described above. Also, we developed as described below, based on ANOM1 and P21 cloned fragments, new SNP markers (prefix Iasnip in the interval from 95 to 106) (Table S1, listed those that proved effective in the course of this research) in the interval delimited by the initial genetic linkage analysis and used them to genotype the mapping population.

Genetic linkage analysis was performed using MAPMAKER v3.0 (Whitehead Institute, Cambridge, MA; Lander et al. 1987) using segregation data for all the SNP markers and the genotypic score of the individuals of the mapping population for the putative locus underlying resistance to broomrape. The genotypes for the putative *Or* locus were inferred from their corresponding phenotypes based on the evaluation of the BC₁F₂ and BC₁F₃ plants as follows. BC₁F₂ plants were scored as homozygous dominant for the putative *Or* locus if they were resistant and showed uniformly resistant plants in their respective BC₁F₃ progeny, heterozygous if they were resistant and their BC₁F₃ progeny segregated (i.e. showed both resistant and susceptible plants) and homozygous recessive if they were susceptible. Twelve resistant BC₁F₂ plants did not produce sufficient seeds for progeny evaluation, and they were scored as homozygous dominant or heterozygous (dominant score). Two-point analysis was used to group the marker loci. A LOD threshold of 15 and a maximum recombination fraction of 0.3 were used as linkage criteria. Three-point and multi-point analyses were used to determine the order and interval distances between the markers. Recombination fractions were converted to centiMorgans (cM) using the Kosambi

mapping function. Linkage group maps were drawn using the MapChart software (Voorrips 2002).

SNP marker development based on the sequence of P21 and ANOM1 cloned fragments

For the development of SNP markers Iasnip from 95 to 106, the genomic region delimited by the closest SNP markers identified in the initial genetic linkage analysis was extracted from the HanXRQr2.0-SUNRISE reference sunflower genome sequence (<https://www.heliagene.org/HanXRQr2.0-SUNRISE>) and used to design primers for amplification of about 800 to 1000 bp regions in P21 and ANOM1. Fifty-seven PCR primer pairs were designed with Primer3 (Untergasser et al. 2012) from protein-coding and genomic regions in the extracted sequence. PCR reactions were performed in 50 µl using 0.75 units of MyTaq DNA polymerase (Bioline, Meridian Life Science, Memphis, USA), 1 × MyTaq reaction buffer (containing 5 mM dNTPs and 15 mM MgCl₂), 0.4 µM of each primer, and 100 ng of genomic DNA. The amplification was performed in a GeneAmp PCR system 9700 (Applied Biosystems, Foster City, CA, USA) with an initial denaturation step of 3 min at 95 °C followed by 34 cycles of 30 s at 95 °C, 30 s at annealing temperature (48–58 °C) and 1 min/kb at 72 °C, followed by an extension step of 20 min at 72 °C to create the poly-A tail. PCR fragments from 3 primers pairs (Table S1) which showed clear amplification in both genotypes were purified by means of the MEGAquick-spin Plus Total Fragment DNA Purification Kit (iNtRON Biotechnology, Inc., Korea), cloned into the pSpark TA Done DNA cloning vector as described by the manufacturer (Canvax Biotech SL, Córdoba, Spain), and Sanger sequenced (Stab Vida, Lisbon, Portugal). Sequences and their identities were confirmed using the BLAST software. Sequence alignments for each PCR product in both genotypes were carried out and used to group the sequences and to identify clusters corresponding to different loci since the fragment analysed has been described to contain duplicated regions (Fernández-Aparicio et al. 2022). Sequences from the same locus were analysed for SNP-DNA polymorphisms and 8 SNP markers were developed (Table S1). Sequence analysis was conducted using the Lasergene SeqMan Ultra and MegAlign Pro software within the DNASTAR, Inc. package.

Characterization of the genomic region containing the putative *Or* resistance gene

All molecular markers linked to the resistance gene were mapped against the HanXRQr2.0-SUNRISE reference sunflower genome sequence (<https://www.heliagene.org/HanXRQr2.0-SUNRISE>). After their positions were determined, the annotated genes and their structure in the

genomic region delimited by the recombinant SNP markers closest to the resistance gene were examined. In parallel, the chromosome-level genome assembly of *H. anomalous* was also used to analyse the sequence and structure of the protein-coding genes in the target region, delimited by the closest recombinant SNP markers. The *H. anomalous* genome sequence and assembly, derived from the accession ANO-2822 (Ames 32,950), was produced at UBC (University of British Columbia, Vancouver, Canada) and annotated at LIPMe-INRAe (Toulouse, France) using protocols and tools described in Badouin et al. (2017). This *H. anomalous* assembly, referred to as HanomANO2822-UBC throughout this manuscript, was submitted to NCBI on 11 September 2023 under SUBID: SUB13720851, BioProject: PRJNA1000454, and BioSample: SAMN36768292 and finally deposited at DDBJ/ENA/GenBank under the accession JAWUZI000000000. The version used in this manuscript is JAWUZI010000000. Target region genome sequence in *H. anomalous* HanomANO2822-UBC assembly was compared to that in *H. annuus*-HanXRQr2.0-SUNRISE reference sunflower genome sequence and also to itself (in order to test for duplications) using Ddotup [EMBOSS (European Molecular Biology Open Software Suite) package; Rice et al. 2000]. In order to determine collinearity in the target region, tBlastn was used to compare the annotated proteins from *H. annuus*-HanXRQr2.0-SUNRISE against the genomic sequence in the *H. anomalous* HanomANO2822-UBC assembly. Also, sequence identities between proteins in the target region of both HanXRQr2.0-SUNRISE and HanomANO2822-UBC assemblies were obtained by BlastP. Gene orthologue inferences were also confirmed by identifying orthogroups between annotated protein coding genes in HanXRQr2.0-SUNRISE and *H. anomalous* HanomANO2822-UBC using OrthoFinder (Emms et al. 2019). Finally, for specific HanomANO2822-UBC annotated proteins, detailed in the results section, BlastP searches against the NCBI protein database were carried out and their protein domains were analysed by InterProScan (<https://www.ebi.ac.uk/interpro/>) and ProSite (<https://prosite.expasy.org/>). Also, multiple sequence alignments were generated by using the Clustal Omega programme using Lasergene MegAlign Pro software included in the DNASTAR, Inc. package.

Characterization of resistance mechanisms

Rhizotron experiments

Two separate experiments were conducted, in both cases using six rhizotrons of each of the sunflower genotypes ANOM1 and the susceptible control B117 (Martín-Sanz et al. 2016). The rhizotrons consisted of two plates of Plexiglas 12 × 12 cm and were prepared following Louarn

et al. (2016) and Le Ru et al. (2021) procedures with slight modifications. Sunflower seeds were sterilized in 4.8% sodium hypochlorite for 10 min and rinsed with sterile distilled water thrice. Sterilized sunflower seeds were sown in a mixture of sand/vermiculite (1:1 by volume) and maintained in a growth chamber at a constant temperature of 22 °C, 60% humidity, and 16 h photoperiod. Seeds of sunflower broomrape population GT were surface sterilized in 3.2% sodium hypochlorite with 0.001% Triton X-100 for 5 min and rinsed 3 times with sterilized distilled water using a 40 µm sterile cell strainer. Broomrape seeds were conditioned for six days in sterilized distilled water (3.3 mg seeds/ml) at 22 °C in the dark. Sunflower seedlings were transferred to glass fibre paper (reference 036294B, Dutscher, Bernolsheim, France) and inoculated with 3 ml of conditioned sunflower broomrape seeds, resulting in 10 mg of seeds per rhizotron. The rhizotrons were placed in a growth chamber at 22 °C 60% humidity and a 16-h photoperiod. They were watered three times per week with half-strength Long Ashton solution (Hewitt 1966) containing 370 µM phosphate. The roots were examined at 14, 21, 28, and 35 days post-inoculation (dpi) under a binocular microscope to determine the total number and stage of development of attachments to sunflower roots and the number of necrotic attachments. The stage of development of the attachments was based on the classification proposed by Martín-Sanz et al. (2016), with some modifications. The developmental stages considered were: T0: absence of attachment; T1: the attachment is formed but not actual tubercle yet visible; T2: tubercle with a diameter smaller than 1 mm; T3: tubercle with a diameter bigger than 1 mm and no visible stem buds; T4: tubercle with stem buds already formed or early stages of stem growth. The predominant stage of the attachments was recorded at each date. The percentage of germination of broomrape seeds was counted at 14 dpi.

Data were analysed using ANOVA for the variables: percentage of germination, number of attachments, and percentage of necrotic attachments. Arcsin transformation was previously applied to the data expressed in percentages (Sokal and Rolf 1995). Analyses were conducted separately for each evaluation date using the genotype and the experiment as fixed factors. If the interaction between genotype and experiment was significant, the two experiments were analysed separately.

Histopathological study

Ten sunflower root pieces with *O. cumana* seedlings attached were cut from the sunflower plants of the rhizotron assay at 14, 21, 28, and 35 dpi using a binocular microscope. Samples were prepared as in Chabaud et al. (2022). Half of the samples were fixed in ethanol: acetic acid (3:1 by

volume) for 10 min under vacuum, cleared in chloral hydrate 5 g/ml for 48 h under agitation and visualized with an Axioplan 2 light microscope (Zeiss, Jena, Germany). The remaining samples were fixed in FAA solution (10% formaldehyde, 5% acetic acid, and 50% ethanol) for 5 min under vacuum, dehydrated in alcohol series, and embedded in Technovit 7100 resin (Heraeus Kulzer, Germany). Thin sections of 10 μm were then made using a Reichert-Jung 2040 microtome (Leica Biosystems, Nussloch, Germany), stained with 0.2% toluidine blue for 3 min, mounted in DePeX mounting medium and scanned using a NanoZoomer image scanner (Hamamatsu Photonics, Japan). For the detection of phenolic compounds, hand-cut sections (with a razor blade) obtained from fresh root samples at 14, 21, 28, and 35 dpi were observed under epifluorescence (340–380 nm), as described in Lozano-Baena et al. (2007), in a Leica DM6 compound microscope with a Leica DFC7000 T digital camera (Wetzlar, Germany).

Results

Inheritance study

P21 parental line was uniformly susceptible (100% incidence) to broomrape population GT, with more than 10 broomrape stalks per plant in all cases. The F_1 generation from the cross P21 \times *H. anomalus* PI 468642 segregated for resistance to this broomrape population, with five susceptible and three resistant plants. Since the crosses were done using pollen from four *H. anomalus* plants indistinctly, because of the availability of very few small flowers, F_1 segregation may indicate that the accession segregates for broomrape resistance, although the four plants used for the cross showed no emerged broomrape shoots. The BC_1F_1 generation from a backcross with one of the resistant F_1 plants segregated into 12 resistant and 12 susceptible plants. This 1:1 ratio provided an initial indication that the resistance is controlled by dominant alleles at a single locus. This was confirmed in the analysis of the BC_1F_2 generation, which resulted in 187 resistant and 47 susceptible BC_1F_2 plants. These figures fit a 3:1 ratio ($\chi^2 = 3.01$; $P = 0.08$), suggesting that the resistance is dominant and controlled by a single locus. The evaluation of BC_1F_3 plants enabled the identification of two susceptible genotypes that had been tentatively classified as resistant in the BC_1F_2 evaluation, resulting therefore in a ratio of 185 resistant and 49 susceptible BC_1F_2 genotypes, which also fitted monogenic segregation ($\chi^2 = 2.06$; $P = 0.15$). The BC_1F_3 evaluation also permitted the separation of homozygotes and heterozygotes in 173 BC_1F_2 resistant genotypes, which revealed that 121 of the BC_1F_3 families segregated for resistance and the corresponding BC_1F_2 genotypes were heterozygotes for the resistance gene,

whereas 52 BC_1F_3 families did not segregate for resistance and the corresponding BC_1F_2 genotypes were homozygotes. The results fitted the 2:1 ratio (heterozygotes: homozygotes) expected for a dominant gene ($\chi^2 = 0.84$; $P = 0.36$). The resistance locus has been named *Or_{Anom1}*.

All 3018 F_2 plants from the allelic cross between ANOM1 and DEB2 were resistant to broomrape population GT, indicating a linkage between the two *Or_{Anom1}* and *Or_{Deb2}* genes.

Performance of ANOM1 germplasm against other broomrape populations

In addition to the race G sunflower broomrape population GT from Turkey, used for the development of the resistant germplasm ANOM1, this germplasm was also completely resistant to sunflower broomrape populations SP (race F) and IN180 (race G), both from the Guadalquivir Valley area in Southern Spain. For both broomrape populations, none of the plants of the ANOM1 germplasm and the resistant control DEB2 showed emerged broomrape shoots in the two evaluations conducted. On the contrary, all the plants of the susceptible control NR5 showed emerged broomrape shoots with both broomrape populations in the two evaluations.

Genetic mapping of the *Or_{Anom1}* gene

The *Or_{Anom1}* gene was mapped to Chr 4 of the sunflower genome (genotyping data provided in Table S2). It was located between SNP markers Iasnip-41 and Iasnip-105/Iasnip-106, which were 0.4 and 0.8 cM, respectively, from *Or_{Anom1}*, and co-segregated with a total of 7 SNP markers (Fig. 1 and Table S3). The markers flanking *Or_{Anom1}* (Iasnip-41 and Iasnip-105/Iasnip-106) delineated a window of 1.32 Mb between physical positions 7,854,198 bp and 9,172,132 bp of the HanXRQr2.0 sunflower genome (<https://www.heliagene.org/HanXRQr2.0-SUNRISE>) (Table S3), which was almost completely coincident with that recently described on Chr 4 containing the wild-*H. debilis* derived *Or_{Deb2}* gene (from 7,892,288 bp to 9,272,600 bp of the HanXRQr2.0 assembly, Fernández-Aparicio et al. 2022). In the HanXRQr2.0 assembly, this region harbours a cluster of genes encoding RLPs (annotated as putative non-specific serine/threonine protein), and RLKs (annotated as putative protein kinases of the RLK-Pelle class, according to RLK class classification in Shiu and Bleecker 2001).

Characterization of the *Or_{Anom1}* locus structure in the wild *H. anomalus* genome and identification of putative gene candidates

All molecular markers linked to *Or_{Anom1}* (Fig. 1) were mapped against the *H. anomalus* genome assembly

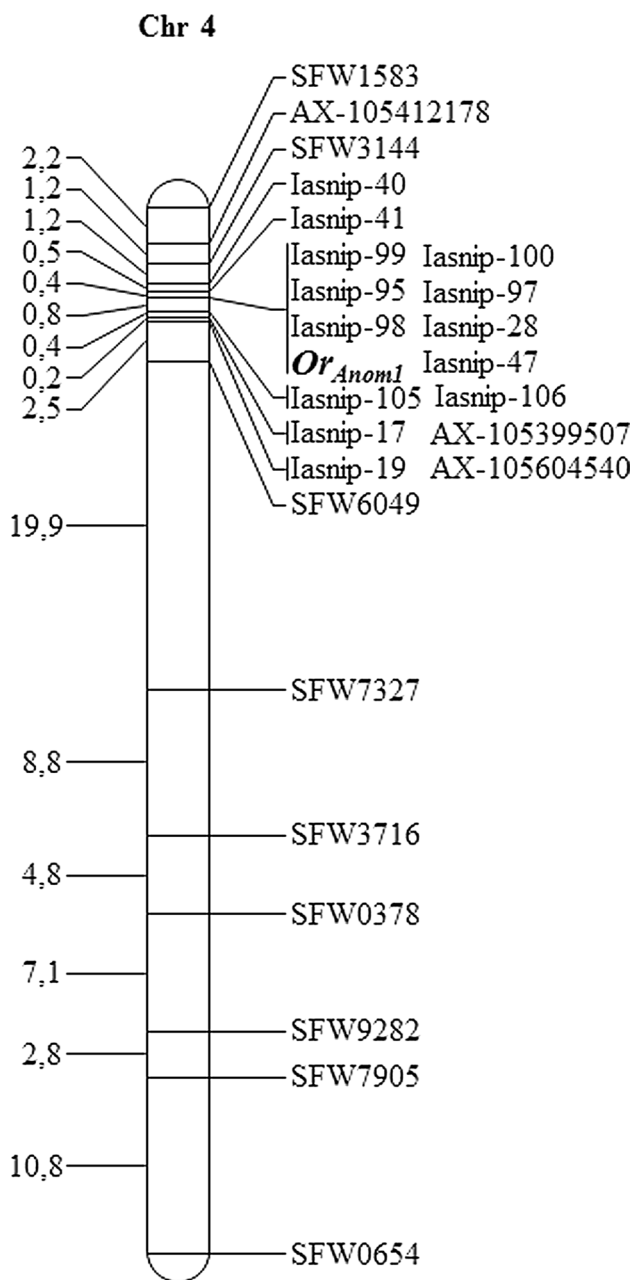


Fig. 1 Linkage map of sunflower chromosome (Chr) 4 containing the *Or_{Anom1}* gene. The SFW prefix denote SNP marker loci mapped by Bowers et al. (2012); the AX prefix, SNP marker loci from the 600 k AXIOM® array developed at LIPME-INRAE (Toulouse, France); and the Iasnip prefix SNP markers developed by the authors. The interval distances in centiMorgans (cM) are shown at the left of the map

(HanomANO2822-UBC) and their positions were determined (Table S3). Marker order between HanXRQr2.0 and HanomANO2822-UBC assemblies was overall conserved (Table S3), although HanXRQr2.0 Chr 4 was re-shuffled in HanomANO2822-UBC. Markers on top of HanXRQr2.0 Chr 4 mapped to Chr 7 in *H. anomalus*

(Table S3), which is made up of part of Chr 4 and Chr 7 of *H. annuus* (Table S3), as previously reported for other wild *Helianthus* species (Barb et al. 2014; Ostevik et al. 2020). The *Or_{Anom1}* flanking markers Iasnip-41 and Iasnip-105 were mapped against the HanomANO2822-UBC genome sequence. Iasnip-105 located at position 10,352,424 bp in *H. anomalus* Chr 7, but Iasnip-41 was not found in this assembly. The closest marker on the left of Iasnip-41 (Iasnip-40) was located in the *H. anomalus* genome at position 9,087,369 bp in Chr 7 (Table S3). These two markers, Iasnip-40 and Iasnip-105, delineated a window of 1.27 Mb for the *Or_{Anom1}* locus in the *H. anomalus* genome. A dot plot analysis between the HanXRQr2.0 and HanomANO2822-UBC assemblies in the Iasnip-40 to Iasnip-105 region showed that this genomic sequence was largely divergent between these two assemblies (Fig. S1A). Also, a dot plot analysis comparing the Iasnip-40 to Iasnip-105 genomic region against itself revealed that this region in the *H. anomalus* assembly contained less repeated and less low complexity regions than in HanXRQr2.0 (Fig. S1B and Fig. S1C).

The *H. anomalus* gene content and structure of the *Or_{Anom1}* locus in the 1.27 Mb region between markers Iasnip-40 and Iasnip-105 were determined and compared to those present in *H. annuus* HanXRQr2.0. Despite overall sequence differences observed between the HanXRQr2.0 and *H. anomalus* assemblies in this region (Fig. S1A), collinearity was found based on both (i) marker and (ii) high homologous protein coding gene (> 90% identity) order conservation (Fig. 2A and Table S4). The annotation of the *Or_{Anom1}* region revealed 71 protein-coding genes (Table S5). Within them, the most abundant (11 out of 71) were protein kinase genes. As Fernández-Aparicio et al. (2022) did for *Or_{Deb2}*, detailed analysis of this protein kinase cluster was carried out due to (i) their abundance in this region, (ii) the fact that the only gene conferring resistance to *O. cumana* cloned to date is a receptor-like kinase (Duriez et al. 2019), and (iii) their essential role in several plant-pathogen interactions (Dievart et al. 2020). The present analysis revealed the absence of LRR-RLPs (annotated as non-specific serine/threonine protein kinases) in *H. anomalus-Or_{Anom1}*. The only two *H. anomalus* genes annotated as non-specific serine/threonine protein kinases (HanomChr07g00585521 and HanomChr07g00585851, Table S5) showed indeed high similarity (100% and 94.3% identity, respectively) to a part of protein kinases of the RLK-Pelle class (HanXRQ2Chr04g00141991 and HanXRQ2Chr04g00142471, respectively) (Table S5 and Fig. 3 for HanomChr07g00585851). Therefore, the only group of kinases present in the *H. anomalus-Or_{Anom1}* locus was constituted by those of the RLK-Pelle class. Of these, HanomChr07g00585341 and HanomChr07g00585531 (with 588 and 691 aa, respectively)

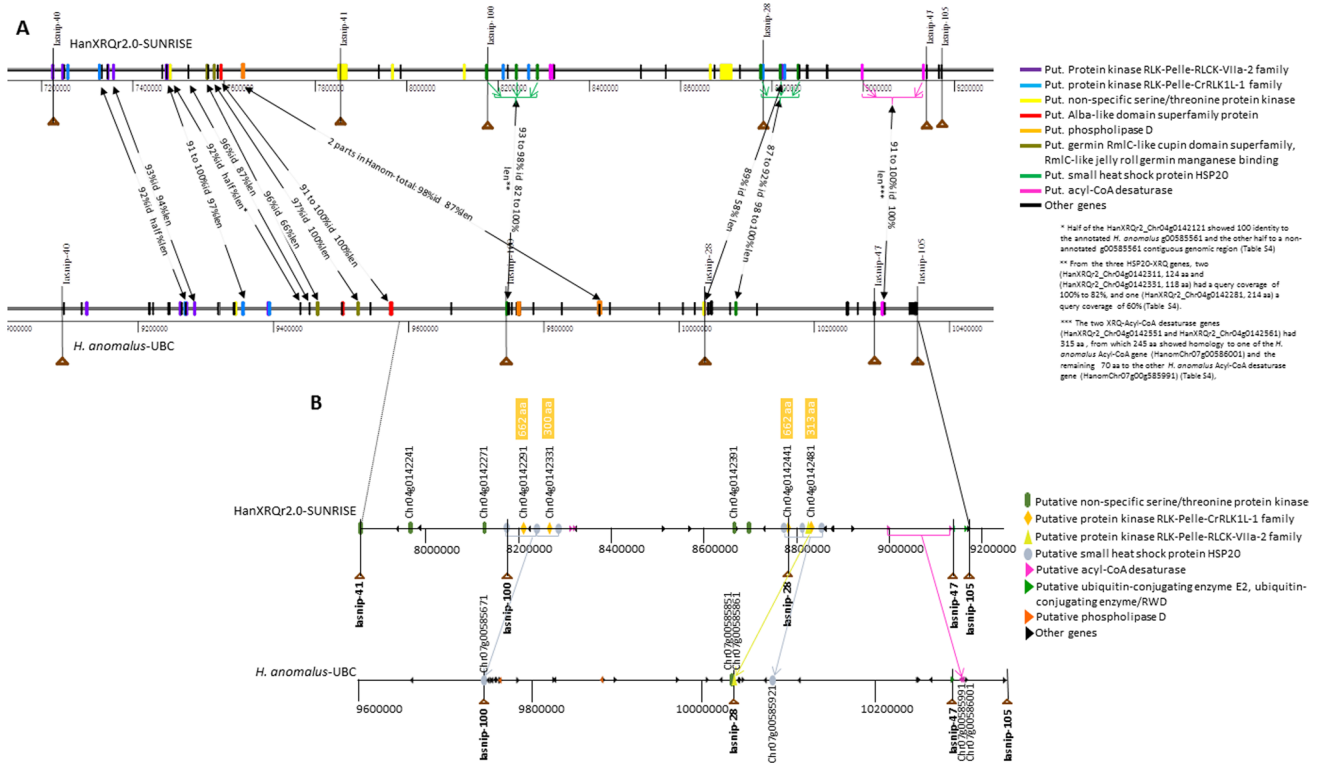


Fig. 2 **a** Gene organization in the region delimited by SNP markers Iasnip-40 and Iasnip-105 in the *H. annuus* HanXRQr2.0 (top) and the *H. anomalus* HanomANO2822-UBC (bottom) assemblies. *H. annuus* and *H. anomalus* orthologous genes are associated by arrows, indicating levels of sequence identity (id), and matching length (len); **b** Gene organization in the region delimited by SNP markers

Iasnip-41 (see text for the position of Iasnip-41 in *H. anomalus*) and Iasnip-105 in the *H. annuus* HanXRQr2.0 (top) and the *H. anomalus* HanomANO2822-UBC assemblies (bottom). *H. annuus* and *H. anomalus* orthologous genes are associated by arrows. Distances are indicated as bp

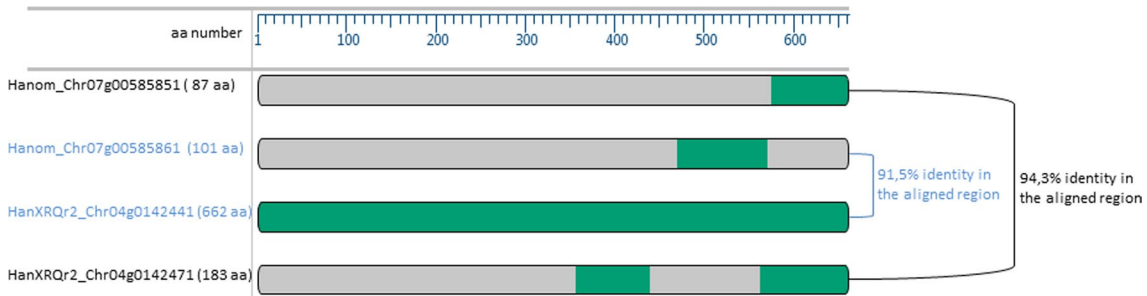


Fig. 3 Schematic ClustalW alignment of protein kinase genes (green colour) HanomChr07g00585851 and HanomChr07g00585861 from *H. anomalus* HanomANO2822-UBC assembly, and HanXRQChr04g00142441 and HanXRQChr04g00142471 from *H.*

annuus HanXRQr2.0 assembly. Similarity between closely related genes based on pairwise amino acid sequence comparisons is also indicated

had two kinase domains, whereas the rest had only one (Fig. S2). Best BlastP hits of the Iasnip-40 to Iasnip-105-HanomANO2822-UBC kinases against the NCBI protein database revealed orthologous genes in HanXRQr2.0 with > 90% sequence identity and query coverage at the target Iasnip-40 to Iasnip-105 interval (6 genes from 9.3 to 10.0 Mb in HanomANO2822-UBC with two groups:

(i) HanomChr07g00585521 to HanomChr07g00585551 showing homology to HanXRQ2Chr04g00141991 and HanXRQ2Chr04g00142101, and (ii) Hanom-Chr07g00585851 and HanomChr07g00585861 with homology to HanXRQ2Chr04g00142471 and HanXRQ2Chr04g00142441, respectively) (Table S5),

or at a left-side adjacent interval (5 genes from 9.1 to 9.28 Mb in HanomANO2822-UBC) (Table S5).

As indicated above, the *Or_{Anom1}* left closest marker (Iasnip-41), which showed two recombinants with *Or_{Anom1}*, revealed no hits in *H. anomalous* HanomANO2822-UBC genome assembly. However, these Iasnip-41-*Or_{Anom1}* recombinants together with the collinearity found in the *Or_{Anom1}* region, with overall marker and gene order conservation (Fig. 2A), and the positions of markers Iasnip-28, 47 and 100 co-segregating with *Or_{Anom1}*, suggested a more delimited Chr 7 *H. anomalous* region for *Or_{Anom1}* (Fig. 2B), which comprised 37 genes (Fig. 2B and Table S5). Among these, there were *H. annuus*-XRQ orthologous genes such as small heat shock protein HSP20 (HanomChr07g00585671 and HanomChr07g00585921), phospholipase D (HanomChr07g00585731 and HanomChr07g00585791), acyl-CoA desaturase (HanomChr07g00585991 and HanomChr07g00586001) and a kinase belonging to the RLCK-VIIa-2 family (HanomChr07g00585851) (Fig. 2A, B). A putative transcription factor of the C2H2 family (HanomChr07g00585881) was also identified (Table S5), which was not found in HanXRQr2.0.

Within this more delimited region, only two kinase genes were identified (Table S5): (i) the orthologue mentioned above HanomChr07g00585851, annotated as a non-specific serine/threonine protein kinase but similar (94.3% identity), as described above, to the HanXRQr2Chr04g00142471 protein kinase of the RLK-Pelle-RLCK-VIIa-2 family (Fig. 3), and (ii) HanomChr07g00585861 annotated as a RLK-Pelle class kinase belonging also to the RLCK-VIIa-2 family, which shared 91% identity with a part of

HanXRQ2Chr04g00142441 [a RLK-Pelle class kinase belonging to the CrRLK1L-1 (*Catharanthus roseus* RLK-like)] (Fig. 3).

Characterization of resistance mechanisms

The analysis of variance indicated that both the experiment ($P < 0.05$) and the interaction between the experiment and the genotype ($P < 0.01$) were significant for the percentage of germination of broomrape seeds. Accordingly, the two experiments were analysed separately. In the first experiment, seed germination averaged 85% on B117 and 89.5% on ANOM1, which were not significantly different ($P > 0.05$). In the second experiment, broomrape seeds showed significantly ($P < 0.05$) lower germination percentage on ANOM1 (77.29%) than on B117 (86.29%).

B117 and ANOM1 did not differ significantly for the total number of attachments on any evaluation dates (Table 1). The predominant stage of development of the attachments on B117 was T2 at 14 dpi, T3 at 21 dpi, and T4 at both 28 and 35 dpi (Fig. S3). Conversely, no progress of the attachments was observed on ANOM1; they reached the developmental stage T1 (broomrape attached to the sunflower root but no actual tubercle) at 14 dpi with no additional growth progress at 21, 28 and 35 dpi (Fig. S3). Instead, a high percentage of necrotic attachments, significantly higher ($P < 0.01$) than in B117, was observed in ANOM1 roots at 35 dpi. They averaged 28.78% for B117 and 67.25% for ANOM1 (Table 1; Fig. 4).

Histopathological studies were carried out on infected roots of ANOM1 and B117 to detail the resistant mechanism of ANOM1. In whole cleared samples at 14 dpi,

Table 1 Number of total attachments, number of necrotic attachments, percentage of necrotic attachments, and predominant stage of the attachments of sunflower broomrape population GT in the roots of sunflower control genotype B117, susceptible to the broomrape population, and ANOM1, resistant to the broomrape population, evalu-

ated in rhizotrons from 14 to 35 days post-inoculation (dpi). Data are given as mean \pm standard error, except for the percentage of necrotic attachments in which only the mean value is given¹

DPI	Genotype	Attachments	Necrotic attachments	% Necrotic attachments	Predominant stage ²
14	B117	34.09 \pm 6.39	0.00	0.00	T2
	ANOM1	39.73 \pm 5.08	0.00	0.00	T1
21	B117	56.18 \pm 10.56	1.55 \pm 1.11	2.76	T3
	ANOM1	50.09 \pm 7.24	0.55 \pm 0.45	1.10	T1
28	B117	61.91 \pm 11.88	7.82 \pm 2.21	12.63	T4
	ANOM1	56.91 \pm 9.68	11.64 \pm 3.41	20.45	T1
35	B117	61.91 \pm 11.88	17.82 \pm 5.32	28.78	T4
	ANOM1	56.91 \pm 9.68	38.27 \pm 8.21*	67.25**	T1

¹Statistical significance of the differences between B117 and ANOM1 computed with ANOVA within each evaluation date. * = significant at $P < 0.05$; ** = significant at $P < 0.01$

²T0: absence of attachment; T1: the attachment is formed but not actual tubercle yet visible; T2: tubercle with a diameter smaller than 1 mm; T3: tubercle with a diameter bigger than 1 mm and no visible stem buds; T4: tubercle with stem buds already formed or early stages of stem growth

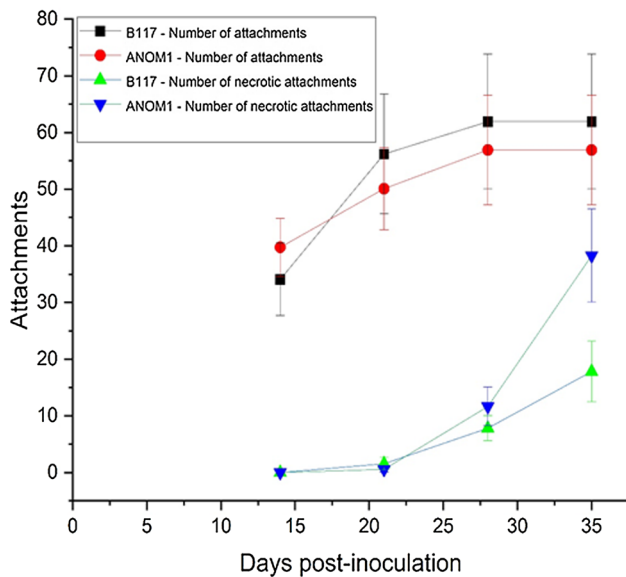


Fig. 4 Number of total attachments and number of necrotic attachments of sunflower broomrape population GT in the roots of sunflower control genotype B117, susceptible to the broomrape population, and ANOM1, resistant to the broomrape population, evaluated in rhizotrons. Data are given as mean \pm standard error

xylem strands inside the parasite towards the host root were visible in both resistant and susceptible lines suggesting the connection to the host vascular system (Fig. 5). Cross thin sections revealed that *O. cumana* intrusive cells had reached the central cylinder of the sunflower root at 14 dpi and broomrape vessels were differentiated, corroborating the vascular connection with the host in samples of both lines (Fig. 5). This indicated that a post-attachment resistance mechanism operating at a later stage after vascular connections have been established was taking part in the ANOM1 resistant line. This vascular connection in ANOM1 was also clearly detected at 21dpi, 28dpi and 35 dpi, in both whole cleared samples and thin sections (Fig. S4). In thin sections, the samples taken from 28 dpi onwards were coloured green in the resistant phenotype ANOM1 after TBO staining (Fig. 6), as well as the host cells in proximity to the attachment, what indicated likely accumulation of phenolic compounds. This was also visible as brownish staining in whole cleared root samples (Fig. S4). To corroborate the phenolic compounds accumulation, fluorescence (340–380 nm) was measured in fresh hand cuts. A difference in fluorescence was observed between samples from both ANOM1 and B117 phenotypes. Also from 28 dpi onwards, fluorescence intensity was higher at the bottom of the broomrapes in contact with the ANOM1-resistant host root and absent in the broomrapes attached to the B117 susceptible line, which corroborated the presence of compounds of a phenolic nature in the resistant one (Fig. 7).

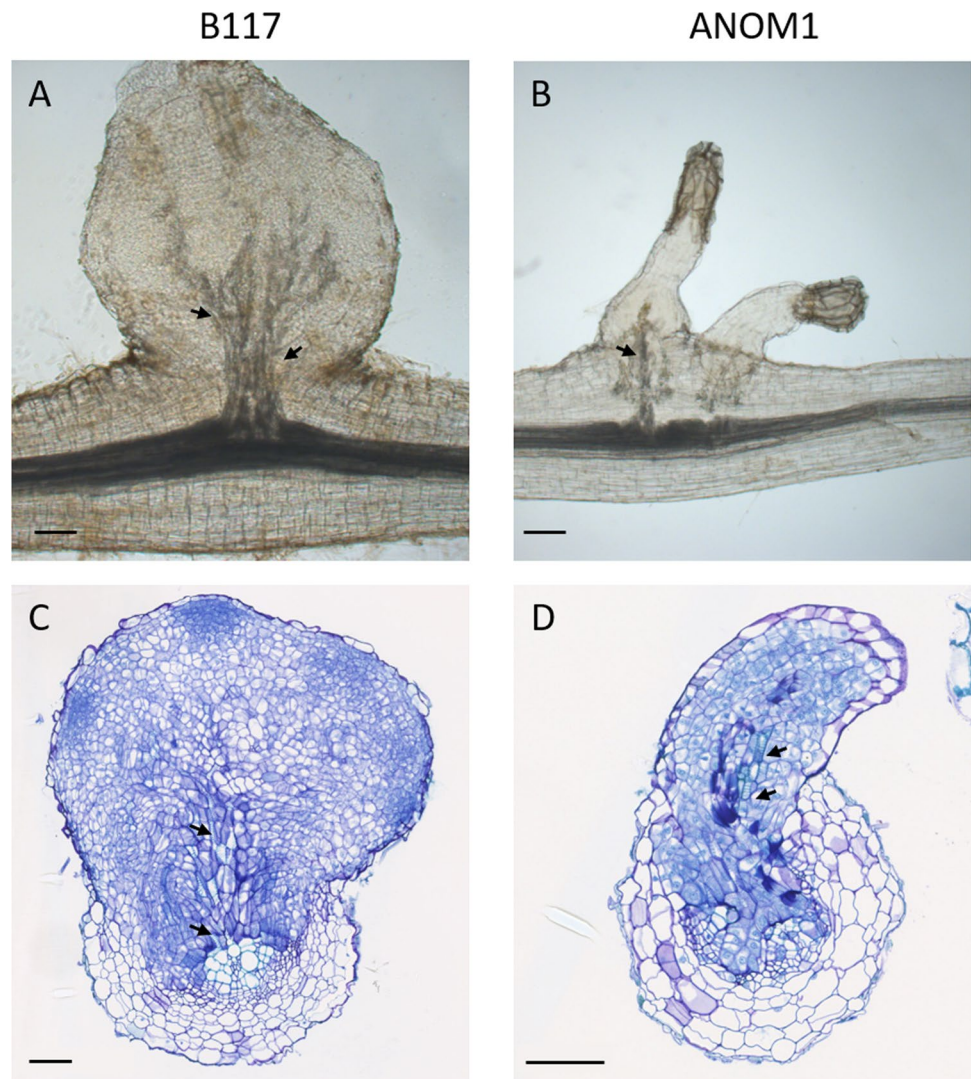
Discussion

Sunflower crop wild relatives have been greatly beneficial for cultivated sunflower improvement, providing plant breeders with a diverse genetic pool of potentially useful traits (Seiler et al. 2017). Particularly, wild *Helianthus* species have represented a substantial reservoir of genes conferring resistance to broomrape (Seiler and Jan 2014). The genus *Helianthus* encompasses both annual and perennial species. Whereas most of the perennial species are immune to broomrape, resistance to this parasitic weed in annual species is less frequent, particularly to the most virulent races (Seiler and Jan 2014). However, for the annual species *H. anomalus*, accessions showing resistance to the Spanish race E (Ruso et al. 1996) and race F (Fernández-Martínez et al. 2000) of broomrape have been identified. For the more recent and virulent race G, Chabaud et al. (2022) identified one accession (PI 468638) of this species which showed resistance to a Romanian race G, although the number of plants evaluated was limited. In this study, accession PI 468638 was also resistant to a Turkish race G, together with another *H. anomalus* accession evaluated, PI 468642.

After the identification of wild *Helianthus* accessions resistant to broomrape, introgression of the resistance gene into the cultivated gene pool should be achieved by conventional crossing, backcrossing and selection for the resistance trait. Contrarily to perennial species, interspecific hybridization using annual wild *Helianthus* spp. is not particularly complex. For example, the successful development of race E and G resistant sunflower germplasm incorporating resistance genes from the wild annuals *H. deserticola* (Hladni et al. 2009), and *H. debilis* ssp. *tardiflorus* (Velasco et al. 2012), respectively, has been reported. Within this research, the race G-resistant germplasm ANOM1 was developed from accession PI 468642 after interspecific crossing, selection for dominant resistance, backcrossing, and visual resemblance to cultivated sunflower, seed production, and seed size.

Resistance to *Orobancha* spp. in crop plants is generally under polygenic, non-race specific control. Sunflower is a notable exception, where resistance has been found to be in most cases monogenic and dominant (Pérez-Vich et al. 2013). One single dominant gene controlling race G resistance has also been found in the germplasm derived from *H. anomalus* developed in this study, and the gene has been named *Or_{Anom1}*. This monogenic and dominant inheritance is particularly valuable for F₁ hybrid seed production, as the genetics is simple and the resistance gene is only introgressed in one of the parents. Since sunflower broomrape resistant hybrids are mainly based on single dominant *Or* genes, the development of new sources

Fig. 5 Vascular connection between *O. cumana* (population GT) and sunflower roots at 14dpi. Whole cleared samples of tubercles on **a** B117 and **b** ANOM1 roots. Xylem is stained dark grey. Transversal thin sections of a broomrape connected to **c** B117 and **d** ANOM1 roots stained with TBO. Xylem vessels stain light blue. *O. cumana* is connected to the sunflower root via xylem strands (arrows). Scale bars = 100 μ m



such as the one described in this study will facilitate the breeding progress. In addition, it will contribute to broaden the genetic basis of broomrape resistance in the cultivated sunflower pool.

To date, major broomrape resistance genes have been located on three sunflower chromosomes: Chr 3 (*Or5* and *or_{ab-vl-8}*; Tang et al. 2003; Pérez-Vich et al. 2004; Imerovski et al. 2016, 2019), Chr 7 (*HaOr7*, Duriez et al. 2019) and Chr 4 (*Or_{Deb2}* and *Or_{SII}*; Martín-Sanz et al. 2020; Fernández-Aparicio et al. 2022). The *Or_{Anom1}* gene has also been mapped to Chr 4 in this study, and its linkage with the race G resistance gene *Or_{Deb2}* has also been confirmed with allelic crosses between genotypes ANOM1 and DEB2, carrying, respectively, each of the genes. In fact, both *Or_{Anom1}* and *Or_{Deb2}* genes have been located almost within the same genomic interval in Chr 4, *Or_{Anom1}* between physical positions 7,854,198 bp and 9,172,132 bp of the HanXRQr2.0 sunflower reference genome, and *Or_{Deb2}* from 7,892,288 bp to 9,272,600 bp (Fernández-Aparicio et al. 2022). Also, the

Or_{SII} gene conferring post-haustorial resistance to races F and G is located at an *Or_{Deb2}* tightly linked position in Chr 4 (Martín-Sanz et al. 2020; Fernández-Aparicio et al. 2022). Therefore, it is clear from these studies that the Chr 4 *Or_{Anom1}* region harbours a broomrape resistance locus with different tightly linked genes or gene alleles originating from different wild relatives, including *H. anomalus* and *H. debilis*. It will have to be determined with further fine mapping studies if the genomic arrangement of *Or_{Anom1}* and *Or_{Deb2}* within this locus corresponds to a cluster of tightly linked resistance genes or it is a single gene with several alleles. Introgressed resistance genes from different crop wild relatives clustering to the same genomic region have also been described in sunflower for *Pl* genes conferring resistance to downy mildew [caused by the oomycete *Plasmopara halstedii* (Farl.) Berlese & de Toni]. For example, *Pl* genes introgressed from wild *H. annuus* and *H. tuberosus* have been found as tightly linked arrays clustering on Chr 4, tracing to wild *H. annuus* and *H. argophyllus* on

Fig. 6 Differences between *O. cumana* (population GT) attached to resistant ANOM1 and susceptible B117 genotypes at 28dpi. **a** Transversal and **b** longitudinal thin sections of *O. cumana* attached to B117 stained with TBO. **c** Transversal and **d** longitudinal thin sections of *O. cumana* attached to ANOM1 stained with TBO. Xylem vessels stain light blue (arrows). Phenolic compounds accumulation stains green. Scale bars = 250 μ m

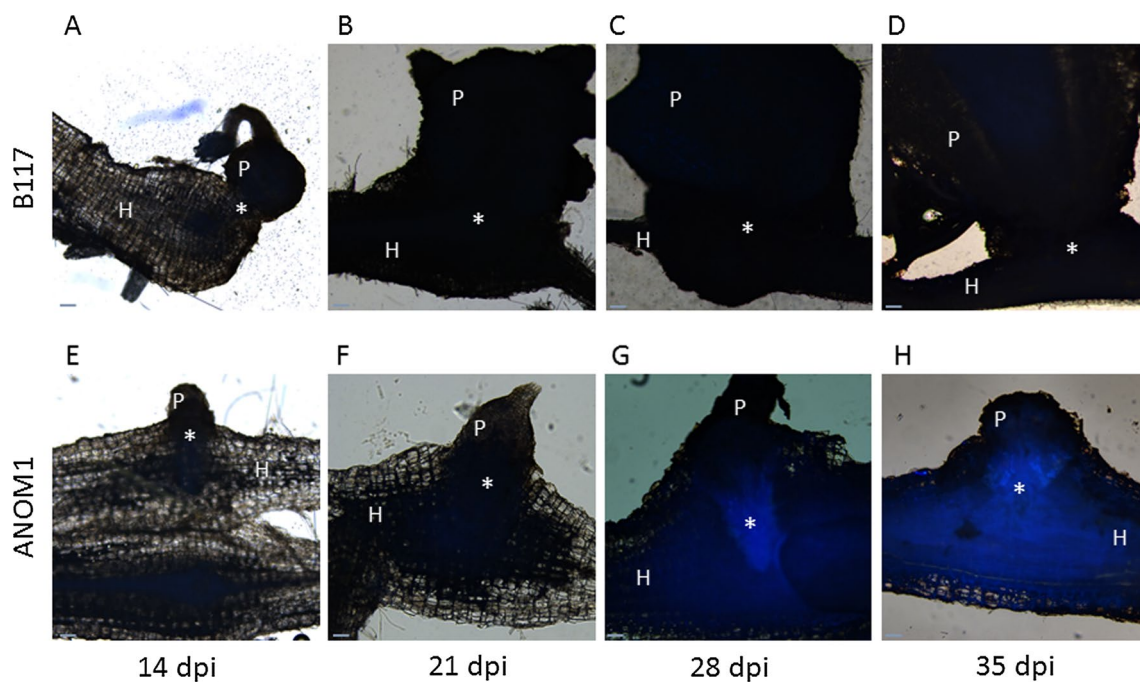
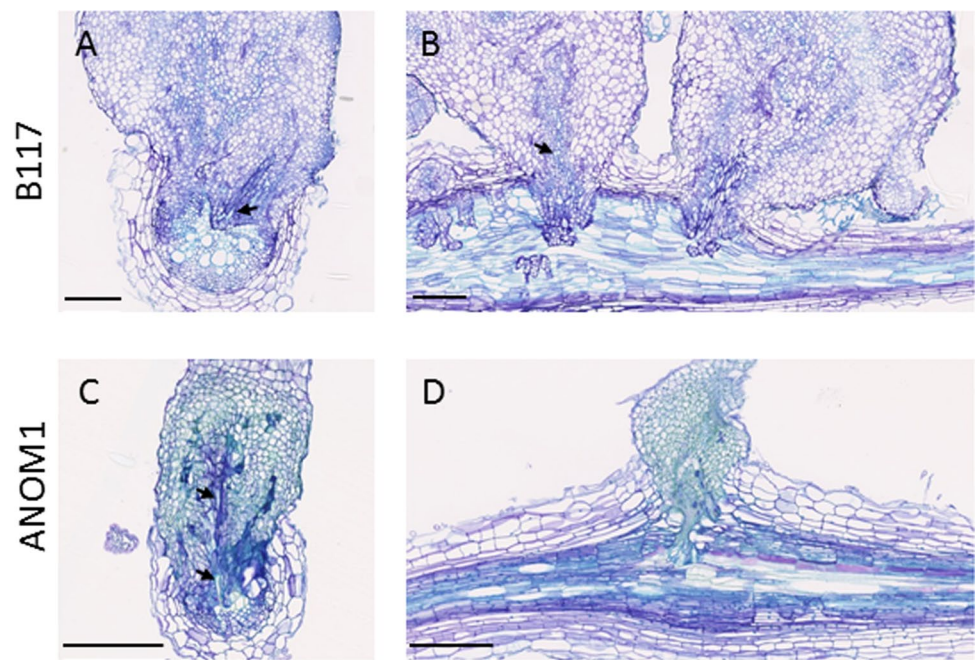


Fig. 7 Fresh hand-cut sections of *O. cumana* (population GT) attached to sunflower roots observed under epifluorescence (340–380 nm). **a–d** Samples collected in the susceptible genotype B117 at 14, 21, 28 and 35 dpi, respectively. **e–h** Samples collected in the

resistant genotype ANOM1 at 14, 21, 28 and 35 dpi, respectively. Phenolic compounds are detected as blue fluorescence. P, parasite; H, host; *, parasite-host connection. Scale bars = 100 μ m

Chr 8, and derived from wild *H. annuus*, *H. argophyllus* and *H. tuberosus* on Chr13 (summarized in Qi et al. 2023).

The gene structure and nature within the genomic *Or_{Anom1}* region, coincident with that of Chr 4 *Or_{Deb2}*, in the reference sunflower genome sequence (obtained from

the cultivated sunflower line XRQ), were described by Fernández-Aparicio et al. (2022). Since (i) it has been shown that resistance gene repertoires vary at phylogenetic scales within genera and species (Steinbrenner 2020) and (ii), more specifically in sunflower, that introgressions

from wild species not only enhance allelic diversity but also increase the total number of genes in the sunflower pan-genome so that the content of an introgression is not necessarily predictable from a reference sequence (Hübner et al. 2019), the *Or_{Anom1}* region was analysed in the recently obtained chromosome assembled genome sequence of *H. anomalus*. This species is derived from an ancient hybridization event likely involving ancestors of the *H. annuus* and *H. petiolaris* clades (Rieseberg 2006; Owens et al. 2023) and chromosomal rearrangements among them have been described (Lai et al. 2005). In fact, we have seen that markers on top of HanXRQr2.0 Chr 4 mapped to Chr 7 in *H. anomalus*, which is made up of part of the *H. annuus* Chr 4 and of the *H. annuus* Chr 7 (Table S3). Rearrangements between Chr 4 and Chr 7 have already been reported in wild sunflowers (Barb et al. 2014; Ostevik et al. 2020). Actually, the Chr 4-Chr 7 configuration of *H. anomalus* is ancestral in the genus *Helianthus* and already present in ancestral reconstructed specific karyotypes from a subsection of annual sunflowers (Ostevik et al. 2020). Despite this rearrangement, marker order was overall conserved in *H. anomalus*, taking into account the physical positions of the markers in the *H. anomalus* genome assembly (Table S3). Therefore, the *Or_{Anom1}* locus was found on top of Chr 7 in the HanomANO2822-UBC assembly.

The putative gene candidates identified in the *Or_{Anom1}* target region raised the question if any of them may underlie this gene. Within this region, Fernández-Aparicio et al. (2022) pointed to nine RLK and RLP genes as being the best candidates for *Or_{Deb2}* in the reference genome of cultivated sunflower (HanXRQr2.0-SUNRISE). This was supported by their abundance in this region, the fact that the only gene conferring resistance to *O. cumana* cloned to date is a receptor-like kinase (Duriez et al. 2019), and the essential role of these kind of genes in different biotic stress responses in plants (Wang et al. 2008; Dievart et al. 2020). In this study, and since *Or_{Anom1}* was mapped to the same *Or_{Deb2}* interval, these genes were also considered the best *Or_{Anom1}* candidates, and their nature and structure in the wild *H. anomalus* genome were analysed. In this species, RLPs were not found in the *Or_{Anom1}* target region, leaving RLKs as the only putative candidate for *Or_{Anom1}*. These protein kinases were RLK-Pelle class, having one or two-fused kinase domains, and no other domains. Kinase-only disease resistance genes include, for example, the tomato *Pto* gene determining resistance to the plant pathogenic bacterium *Pseudomonas syringae* pv *tomato* (Ntoukakis et al. 2014). Dual-kinase genes show structural similarities to tandem kinase-pseudokinase genes underlying the barley *Rpg1* and the wheat *WTK1* (*Yr15*), *WTK2* (*Sr60*), *WTK3* (*Pm24*), and *WTK4* genes which determine resistance to biotrophic fungal pathogens (Klymiuk et al. 2021; Fahima and Coaker 2023).

Although the left *Or_{Anom1}* recombinant marker (Iasnip-41) was not found in the *H. anomalus* HanomANO2822-UBC genome assembly, there were different reasons detailed in the results sections suggesting a more delimited Chr 7 *H. anomalus* region for *Or_{Anom1}*, which comprised 37 genes (Table S5). Among them, only two RLKs were identified: (i) HanomChr07g00585851 (87 aa) with no domain hits in ProSite and similar to the HanXRQr2.0 Chr 4 orthologue Chr04g00142471 (protein kinase of the RLK-Pelle-RLCK-VIIa-2 family) (Fig. 3) and (ii) HanomChr07g00585861 (101 aa) having one kinase domain and sharing 91% identity with a part of HanXRQ2Chr04g00142441 [RLK-Pelle class kinase belonging to the CrRLK1L-1 (*Catharanthus roseus* RLK1-like)]. By examining matching regions of these two RLK *H. anomalus* genes with their XRQ2.0 homologues, they were found in fact to match contiguously to the longer orthologue HanXRQ2Chr04g00142441 (Fig. 3). This kind of gene rearrangement generating split and shorter (or contrarily fused and longer) RLKs has already been described for clustered RLKs and has been related to localized gene duplications and/or transposon element insertions (Shiu et al. 2004; Zhang et al. 2005). However, local misassemblies and annotation errors cannot be completely excluded. On the other hand, other protein-coding genes which have been associated with pathogen resistance in plants found in the *Or_{Anom1}* limited target interval might also be considered as *Or_{Anom1}* candidates. These included a putative transcription factor of the C2H2 family (HanomChr07g00585881) and an ubiquitin-conjugating enzyme E2 (HanomChr07g00585971). InterPro analyses of the HanomChr07g00585881 amino acid sequence revealed a RING (really interesting new gene)-type zinc finger domain, which is involved in mediating protein-protein interactions. A general function of this RING domain is likely to be an E3 ubiquitin-protein ligase activity (Freemont 2000). The ubiquitin-conjugating enzyme (E2) and ubiquitin ligase enzyme (E3) are components of the ubiquitin-proteasome system (UPS), together with ubiquitin, ubiquitin-activating enzyme (E1) and 26S proteasome (Sadanandom et al. 2012). This UPS system is one of the main pathways for post-translational protein modifications, affecting many cellular processes (Sadanandom et al. 2012) and its role in the regulation of plant defence against pathogens has been described (Devoto et al. 2003; Craig et al. 2009). Particularly, ubiquitin-conjugating enzyme (E2) and ubiquitin ligase enzyme (E3) have been associated with disease resistance in crops such as rice (Ishikawa et al. 2014; Wang et al. 2015; Liu et al. 2021) or tomato (Zhou et al. 2017). It has to be mentioned that HanomChr07g00585881 sunflower orthologous genes found through NCBI blast were not located on Chr 4, but on sunflower Chr 2 [100% coverage, 95.2% identity; RHA438 assembly (Huang et al. 2023)] and 5 [85% coverage, 91.9%

to 93.6% identity; RHA348, HA300, OQP8, LR1, PI659440 (Huang et al. 2023) and XRQr2.0 assemblies]. Regarding HanomChr07g00585971, its orthologous gene HanXRQr2_Chr04g0142581 was located in the sunflower Chr 4 *Or_{Anom1}* limited target interval. Due to the synteny observed between *H. annuus* and *H. anomalus* in this interval and the possible existence of local misassemblies, HanomChr07g00585881 might be considered a less robust candidate than the others. Further *Or_{Anom1}* fine mapping and the genome sequence of ANOM1 would be necessary to discern among the different hypotheses regarding the nature of the functional *Or_{Anom1}* gene.

Gaining insights into the sunflower mechanisms of resistance to broomrape is not only essential for understanding the underlying molecular processes involved, but also for designing physiology-based resistance breeding strategies (Pérez-Vich et al. 2013). Different resistance strategies to prevent parasite infection have been documented, each one targeting one stage of the parasite life cycle. Resistance mechanisms at the initial stage of the host–parasite interaction have been described in sunflower genotypes that exhibit reduced release of germination stimulants, as well as those that release germination inhibitors (Labrousse et al. 2001; Serghini et al. 2001). Our data showed the resistance conferred by *Or_{Anom1}* is not related to *O. cumana* germination. Post-attachment mechanisms operating in a first step preventing the establishment of effective vascular connections between sunflower and *O. cumana* have been identified for the major genes *HaOr7* (Duriez et al. 2019) and *Or_{Deb2}* (Fernández-Aparicio et al. 2022), which block *O. cumana* intrusion mainly at the cortex. Lignification, protein crosslinking, or suberization, which thicken in the host–parasite interface, have been described as mechanisms blocking *O. cumana* to reach the endodermis (Labrousse et al. 2001; Echevarría-Zomeño et al. 2006; Sisou et al. 2021; Chabaud et al. 2022). In our study, no physical barriers were observed impeding the penetration of the parasite into the root in the ANOM1 genotype. In fact, whole cleared samples and histological sections revealed the intrusion of the parasite until the central cylinder of the host root, where xylem vessels were differentiated and vascular connections were established, which differs from the mechanisms described for *HaOr7* and *Or_{Deb2}*.

After vascular connections were formed, monitoring the development of the tubercles showed the first difference between the susceptible control and the ANOM1 resistant genotype. While tubercles attached to the susceptible B117 line never stopped growing, those attached to the ANOM1 line did not increase in size. Moreover, necrotic tubercles started to appear 21 dpi and by the end of the experiment more than 70% of the tubercles attached to the resistant line were dead. Although there were some tubercles

attached to the resistant line that seemed healthy at 35 dpi, their arrested growth and the fact that the resistant plants showed no broomrape emergence from the soil when tested in pots suggested that these tubercles would most likely become necrotic before emerging from the ground. The susceptible line also presented necrotic tubercles, but in much less quantity. This can be explained by the high trophic competition between broomrapes due to the finite amount of assimilate available in each plant for all the parasites attached and the limited space where they grow inside the rhizotrons (Labrousse et al. 2001). Chabaud et al. (2022) evaluated a collection of wild *Helianthus* accessions for resistance mechanisms to *O. cumana*, in which unfortunately *H. anomalus* could not be evaluated in rhizotrons due to the poor germination ability of the accessions tested (M. Chabaud, personal communication). These authors described a group of wild species including *H. bolanderi*, *H. debilis*, *H. petiolaris*, and *H. praecox* which showed also tubercle necrosis revealing late resistance mechanisms.

Whole cleared samples, histological sections stained with TBO and fluorescence analysis showed phenolic accumulation from 28 dpi onwards in the ANOM1 genotype, revealing this as one of the main mechanisms for host defence reaction. This mechanism has also been described in other interactions with *Orobanchae* spp. For example, Lozano-Baena et al. (2007) studied the interaction between *Medicago truncatula* and its parasite *Orobanchae crenata* and reported a resistance mechanism after the vascular connection of the parasite in which phenolic compounds were released at the infection point, leading to the parasite's cells death. In sunflower, Martín-Sanz et al. (2020) described a late post-attachment resistant mechanism conferred by the *Or_{SII}* gene and also observed phenolic compounds inside parasite tubercle cells and neighbouring host tissue, suggesting that these compounds produced toxicity and reduced the growth of the parasite structures. However, *Or_{SII}* and *Or_{Anom1}* resistance mechanisms differ in that *Or_{SII}* did not produce necrotic attachments in rhizotron studies and allowed tubercle development, being resistance mechanism observed at a very late stage of the broomrape development as underdeveloped broomrape shoots with reduced growth even after broomrape shoot emergence (Martín-Sanz et al. 2020), while in ANOM1 broomrape growth was stopped at early stages (mainly at T1) and most of them became necrotic.

In conclusion, a new monogenic and dominant resistance to race G of broomrape has been identified in the wild species *H. anomalus* and introgressed to sunflower. The resistance gene *Or_{Anom1}* was mapped to the RLK-RLP resistance locus on Chr 4, and *Or_{Anom1}*-candidate genes were identified within the *H. anomalus* genome assembly. The Chr 4 RLK-RLP locus also harbours the *Or_{Deb2}* and

Or_{SII} resistance genes. However, the different natures of the associated resistance mechanisms and the different origins of these genes, with *Or_{Deb2}* directly transferred from other wild sunflower species (*H. debilis* subsp. *tardiflorus*, Velasco et al. 2012) and *Or_{SII}* identified within a proprietary sunflower germplasm collection (Hassan 2003), indicated that *Or_{Anom1}*, *Or_{Deb2}*, and *Or_{SII}* might represent different allelic configurations or alternatively are tightly linked non-allelic genes. The new ANOM1 resistant source would contribute to broaden the genetic basis of broomrape resistance in the cultivated sunflower pool, which is crucial due to the parasite ability to evolve physiologically, and to develop more durable and sustainable breeding strategies based on genetic resistance.

Supplementary Information The online version contains supplementary material available at <https://doi.org/10.1007/s00122-024-04558-4>.

Acknowledgements We thank Plácida Nieto and Alberto Merino (IAS-CSIC, Córdoba, Spain) for technical support. We also thank Juan E. Palomares-Rius, Pablo Castillo, Ilenia Clavero-Camacho, and Jorge Martín (IAS-CSIC, Córdoba, Spain) for providing access to their histopathological lab for epi-fluorescence assays, and for their advice.

Author Contribution statement BFM developed SNP markers, mapped the resistance gene, analysed the genomic structure of the resistance locus, carried out rhizotron and histological analyses, and contributed to phenotypic assays. LdM contributed to sample collection, DNA extraction and genotyping. LV identified the resistant wild relatives, developed the ANOM1 germplasm and segregating populations and coordinated all phenotyping assays. SM contributed and coordinated the *H. anomalus* genome assembly analyses. MC coordinated and supervised the rhizotron and histological analyses. MT, GLO, LR produced the *H. anomalus* genome data and assembly. SC did the functional annotation of the *H. anomalus* genome assembly. BPV, LV designed the experiments. BPV coordinated all the study and contributed phenotypic assays and data analyses. BPV, LV, BFM wrote the manuscript. All authors revised the manuscript and contributed to its final version.

Funding Open Access funding provided thanks to the CRUE-CSIC agreement with Springer Nature. The study was carried out within research project PID2020-117286RB-I00 funded by MCIN (Ministerio de Ciencia e Innovación) / AEI (Agencia Estatal de Investigación; <https://doi.org/10.13039/501100011033>) / FEDER-UE (Fondo Europeo de Desarrollo Regional-Unión Europea), and was supported by the grant to Belén Fernández-Melero PRE2018-084486 funded by MCIN/AEI/10.13039/501100011033 and ESF “ESF investing in your future”. Also, it was partly supported by Junta de Andalucía (Spain, Qualifica Project QUAL21_023 IAS) and by INRAE (France).

Data availability PCR primer sequences, SNP context sequences, tBlastn results, aminoacid sequences of the putative protein coding genes in the target region, and the SNP data set from the mapping population are available as supplementary material. The *H. anomalus* chromosome-level genome sequence has been sent to NCBI under BioProject PRJNA1000454 and finally deposited at DDBJ/ENA/GenBank under the accession JAWUZI000000000. The version used in this manuscript is JAWUZI010000000.

Declarations

Conflict of interest We declare no conflicts of interest in regard to this manuscript.

Open Access This article is licensed under a Creative Commons Attribution 4.0 International License, which permits use, sharing, adaptation, distribution and reproduction in any medium or format, as long as you give appropriate credit to the original author(s) and the source, provide a link to the Creative Commons licence, and indicate if changes were made. The images or other third party material in this article are included in the article's Creative Commons licence, unless indicated otherwise in a credit line to the material. If material is not included in the article's Creative Commons licence and your intended use is not permitted by statutory regulation or exceeds the permitted use, you will need to obtain permission directly from the copyright holder. To view a copy of this licence, visit <http://creativecommons.org/licenses/by/4.0/>.

References

- Akhtouch B, Muñoz-Ruz J, Melero-Vara J, Fernández-Martínez J, Domínguez J (2002) Inheritance of resistance to race F of broomrape in sunflower lines of different origins. *Plant Breed* 121:266–268. <https://doi.org/10.1046/j.1439-0523.2002.00701.x>
- Bachlava E, Taylor CA, Tang S, Bowers JE, Mandel JR, Burke JM, Knapp SJ (2012) SNP discovery and development of a high-density genotyping array for sunflower. *PLoS ONE* 7:e29814. <https://doi.org/10.1371/journal.pone.0029814>
- Badouin H, Gouzy J, Grassa CJ, Murat F, Staton SE, Cottret L, Lelandais-Brière C, Owens GL, Carrère S, Mayjonade B, Legrand L, Gill N, Kane NC, Bowers JE, Hubner S, Bellec A, Bérard A, Bergès H, Blanchet N, Boniface MC, Brunel D, Catrice O, Chaidir N, Claudel C, Donnadiou C, Faraut T, Fievet G, Helmstetter N, King M, Knapp SJ, Lai Z, Le Paslier MC, Lippi Y, Lorenzon L, Mandel JR, Marage G, Marchand G, Marquand E, Bret-Mestries E, Morien E, Nambeesan S, Nguyen T, Pegot-Espagnet P, Pouilly N, Raftis F, Sallet E, Schiex T, Thomas J, Vandecasteele C, Varès D, Vear F, Vautrin S, Crespi M, Mangin B, Burke JM, Salse J, Muñoz S, Vincourt P, Rieseberg LH, Langlade NB (2017) The sunflower genome provides insights into oil metabolism, flowering and Asterid evolution. *Nature* 546:148–152. <https://doi.org/10.1038/nature22380>
- Barb JG, Bowers JE, Renaut S, Rey JI, Knapp SJ, Rieseberg LH, Burke JM (2014) Chromosomal evolution and patterns of introgression in *Helianthus*. *Genetics* 197:969–979. <https://doi.org/10.1534/genetics.114.165548>
- Bowers JE, Bachlava E, Brunick RL, Rieseberg LH, Knapp SJ, Burke JM (2012) Development of a 10,000 locus genetic map of the sunflower genome based on multiple crosses. *Genes Genomes Genet* 2:721–729. <https://doi.org/10.1534/g3.112.002659>
- Calderón-González A, Pérez-Vich B, Velasco L, Muñoz S (2023) Association mapping for broomrape resistance in sunflower. *Front Plant Sci* 13:1056231. <https://doi.org/10.3389/fpls.2022.1056231>
- Chabaud M, Auric MC, Boniface MC, Delgrange S, Folletti T, Jardinaud MF, Legendre A, Pérez-Vich B, Pouvreau JB, Velasco L, Delavault P, Muñoz S (2022) Wild *Helianthus* species: A reservoir of resistance genes for sustainable pyramidal resistance to broomrape in sunflower. *Front Plant Sci* 13:1038684. <https://doi.org/10.3389/fpls.2022.1038684>
- Christov M, Batchvarova R, Hristova-Cherbadzhi M (2009) Wild species of *Helianthus* L. Sources of resistance to the parasite *Orobanche cumana* Wallr. *Helia* 51:65–74. <https://doi.org/10.2298/hel0951065c>

- Craig A, Ewan R, Mesmar J, Gudipati V, Sadanandom A (2009) E3 ubiquitin ligases and plant innate immunity. *J Exp Bot* 60:1123–1132. <https://doi.org/10.1093/jxb/erp059>
- Dievart A, Gottin C, Périn C, Ranwez V, Chantret N (2020) Origin and diversity of plant receptor-like kinases. *Annu Rev Plant Biol* 71:131–156. <https://doi.org/10.1146/annurev-arpla-nt-073019-025927>
- Devoto A, Muskett PR, Shirasu K (2003) Role of ubiquitination in the regulation of plant defence against pathogens. *Curr Opin Plant Biol* 6:307–11. [https://doi.org/10.1016/s1369-5266\(03\)00060-8](https://doi.org/10.1016/s1369-5266(03)00060-8)
- Duriez P, Vautrin S, Auriac MC, Bazerque J, Boniface MC, Callot C, Carrère S, Cauet S, Chabaud M, Gentou F, López-Sendon M, Paris C, Pegot-Espagnet P, Rousseaux J-C, Pérez-Vich B, Velasco L, Bergès H, Piquemal J, Muñoz S (2019) A receptor-like kinase enhances sunflower resistance to *Orobanche cumana*. *Nat Plants* 5:1211–1215. <https://doi.org/10.1038/s41477-019-0556-z>
- Echevarría-Zomeño S, Pérez-De-Luque A, Jorrín J, Maldonado AM (2006) Pre-haustorial resistance to broomrape (*Orobanche cumana*) in sunflower (*Helianthus annuus*): Cytochemical studies. *J Exp Bot* 57:4189–4200. <https://doi.org/10.1093/jxb/erl195>
- Emms DM, Kelly S (2019) OrthoFinder: phylogenetic orthology inference for comparative genomics. *Genome Biol* 20:238. <https://doi.org/10.1186/s13059-019-1832-y>
- Fahima T, Coaker G (2023) Pathogen perception and deception in plant immunity by kinase fusion proteins. *Nat Genet* 55:908–909. <https://doi.org/10.1038/s41588-023-01396-w>
- Fernández-Aparicio M, Del Moral L, Muñoz S, Velasco L, Pérez-Vich B (2022) Genetic and physiological characterization of sunflower resistance provided by the wild-derived *Or_{Deb2}* gene against highly virulent races of *Orobanche cumana* Wallr. *Theor Appl Genet* 135:501–525. <https://doi.org/10.1007/s00122-021-03979-9>
- Fernández-Martínez JM, Melero-Vara JM, Muñoz-Ruz J, Ruso J, Domínguez J (2000) Selection of wild and cultivated sunflower for resistance to a new broomrape race that overcomes resistance to *Or5* gene. *Crop Sci* 40:550–555. <https://doi.org/10.2135/cropsci2000.402550x>
- Fernández-Martínez JM, Pérez-Vich B, Velasco L (2015) Sunflower broomrape (*Orobanche cumana* Wallr.). In: Martínez-Force E, Dunford NT, Salas JJ (eds) Sunflower oilseed. Chemistry, production, processing and utilization. AOCS Press, Champaign, IL, pp 129–156
- Freemont PS (2000) Ubiquitination: RING for destruction? *Current Biol* 10:R84–R87. [https://doi.org/10.1016/S0960-9822\(00\)00287-6](https://doi.org/10.1016/S0960-9822(00)00287-6)
- Hewitt EJ (1966) Sand and water culture methods in the study of plant nutrition. Technical communication No. 22 of the Commonwealth Bureau of Horticulture and Plantation Crops, 2nd edn. Commonwealth Agr. Bureau, Farnham Royal, England. <https://doi.org/10.2136/sssaj1953.03615995001700030033x>
- Hladni N, Jocić S, Miklič V, Saftić-Panković D, Škorić D (2009) Using new *Rf* inbred lines originating from an interspecific population with *H. deserticola* for development of sunflower hybrids resistant to broomrape. *Helia* 51:81–90. <https://doi.org/10.2298/hel10951081h>
- Huang K, Jahani M, Gouzy J, Legendre A, Carrere S, Lázaro-Guevara JM, González Segovia EG, Todesco M, Mayjonade B, Rodde N, Cauet S, Dufau I, Staton SE, Pouilly N, Boniface MC, Tapy C, Mangin B, Duhnen A, Gautier V, Poncet C, Donnadiou C, Mandel T, Hübner S, Burke JM, Vautrin S, Bellec A, Owens GL, Langlade N, Muñoz S, Rieseberg LH (2023) The genomics of linkage drag in inbred lines of sunflower. *Proc Natl Acad Sci U S A* 120:e2205783119. <https://doi.org/10.1073/pnas.2205783119>
- Huang Q, Lei Z, Xiang L, Zhang W, Zhang L, Gao Y (2022) Transcriptomic analysis of sunflower (*Helianthus annuus*) roots resistance to *Orobanche cumana* at the seedling stage. *Horticultrae* 8:701. <https://doi.org/10.3390/horticultrae8080701>
- Hübner S, Bercovich N, Todesco M, Mandel JR, Odenheimer J, Ziegler E, Lee JS, Baute GJ, Owens GL, Grassa CJ, Ebert DP, Ostevik KL, Moyers BT, Yakimowski S, Masalia RR, Gao L, Čalić I, Bowers JE, Kane NC, Swanevelder DZH, Kubach T, Muñoz S, Langlade NB, Burke JM, Rieseberg LH (2019) Sunflower pan-genome analysis shows that hybridization altered gene content and disease resistance. *Nat Plants* 5:54–62. <https://doi.org/10.1038/s41477-018-0329-0>
- Imerovski I, Dimitrijević A, Miladinović D, Dedić B, Jocić S, Tubić NK, Cvejić S (2016) Mapping of a new gene for resistance to broomrape races higher than *F. Euphytica* 209:281–289. <https://doi.org/10.1007/s10681-015-1597-7>
- Imerovski I, Dedić B, Cvejić S, Miladinović D, Jocić S, Owens GL, Tubić NK, Rieseberg LH (2019) BSA-Seq mapping reveals major QTL for broomrape resistance in four sunflower lines. *Mol Breed* 39:41. <https://doi.org/10.1007/s11032-019-0948-9>
- Ishikawa K, Yamaguchi K, Sakamoto K, Yoshimura S, Inoue K, Tsuge S, Kojima C, Kawasaki T (2014) Bacterial effector modulation of host E3 ligase activity suppresses PAMP-triggered immunity in rice. *Nat Commun* 5:5430. <https://doi.org/10.1038/ncomms6430>
- Klymiuk V, Coaker G, Fahima T, Pozniak CJ (2021) Tandem protein kinases emerge as new regulators of plant immunity. *Mol Plant Microbe Interact* 34:1094–1102. <https://doi.org/10.1094/MPMI-03-21-0073-CR>
- Labrousse P, Arnaud MC, Serieys H, Bervillé A, Thalouarn P (2001) Several mechanisms are involved in resistance of *Helianthus* to *Orobanche cumana* Wallr. *Ann Bot* 88:859–868. <https://doi.org/10.1006/anbo.2001.1520>
- Lai Z, Nakazato T, Salmaso M, Burke JM, Tang S, Knapp SJ, Rieseberg LH (2005) Extensive chromosomal repatterning and the evolution of sterility barriers in hybrid sunflower species. *Genetics* 171:291–303. <https://doi.org/10.1534/genetics.105.042242>
- Lander E, Green P, Abrahamson J, Barlow A, Daley M, Lincoln S, Newburg L (1987) MAPMAKER: an interactive computer package for constructing primary genetic linkage maps of experimental and natural populations. *Genomics* 1:174–181. [https://doi.org/10.1016/0888-7543\(87\)90010-3](https://doi.org/10.1016/0888-7543(87)90010-3)
- Le Ru A, Ibarcq G, Boniface MC, Baussart A, Muñoz S, Chabaud M (2021) Image analysis for the automatic phenotyping of *Orobanche cumana* tubercles on sunflower roots. *Plant Methods* 17:80. <https://doi.org/10.1186/s13007-021-00779-6>
- Li J, Zhang N, Zhou Y, Huang Q, Xu J, Cen H, Ali B, Shi B, Xu L, Yang C, Zhou W (2023) Whole-genome identification and expression analysis of basic leucine zipper genes under cadmium, drought and *Orobanche cumana* stresses in *Helianthus annuus* L. *Ind Crops Prod* 193:116123. <https://doi.org/10.1016/j.indcrop.2022.116123>
- Liu X, Song L, Zhang H, Lin Y, Shen X, Guo J, Su M, Shi G, Wang Z, Lu G-D (2021) Rice ubiquitin-conjugating enzyme OsUBC26 is essential for immunity to the blast fungus *Magnaporthe oryzae*. *Mol Plant Pathol* 22:1613–1623. <https://doi.org/10.1111/mpp.13132>
- Louarn J, Boniface M-C, Pouilly N, Velasco L, Pérez-Vich B, Vincourt P, Muñoz S (2016) Sunflower resistance to broomrape (*Orobanche cumana*) is controlled by specific QTLs for different parasitism stages. *Front Plant Sci* 7:590. <https://doi.org/10.3389/fpls.2016.00590>
- Lozano-Baena MD, Prats E, Moreno MT, Rubiales D, Pérez-de-Luque A (2007) *Medicago truncatula* as a model for nonhost resistance in legume-parasitic plant interactions. *Plant Physiol* 145:437–449. <https://doi.org/10.1104/pp.107.097089>
- Martín-Sanz A, Malek J, Fernández-Martínez JM, Pérez-Vich B, Velasco L (2016) Increased virulence in sunflower broomrape (*Orobanche cumana* Wallr.) populations from Southern Spain is associated with greater genetic diversity. *Front Plant Sci* 7:589. <https://doi.org/10.3389/fpls.2016.00589>

- Martín-Sanz A, Pérez-Vich B, Fernández-Martínez JM, Rueda S, Velasco L (2020) Characterization of post-haustorial resistance to sunflower broomrape (*Orobanche cumana* Wallr.). *Crop Sci* 60:1188–1198. <https://doi.org/10.1002/csc2.20002>
- Ntoukakis V, Saur IML, Conlan B, Rathjen JP (2014) The changing of the guard: the Pto/Prf receptor complex of tomato and pathogen recognition. *Curr Opin Plant Biol* 20:69–74. <https://doi.org/10.1016/j.pbi.2014.04.002>
- Ostevik KL, Samuk K, Rieseberg LH (2020) Ancestral reconstruction of karyotypes reveals an exceptional rate of nonrandom chromosomal evolution in sunflower. *Genetics* 214:1031–1045. <https://doi.org/10.1534/genetics.120.303026>
- Owens GL, Huang K, Todesco M, Rieseberg LH (2023) Re-evaluating homoploid reticulate evolution in *Helianthus* sunflowers. *Mol Biol Evol* 40:msad013. <https://doi.org/10.1093/molbev/msad013>
- Pérez-Vich B, Akhtouch B, Muñoz-Ruz J, Fernández-Martínez JM, Jan CC (2002) Inheritance of resistance to a highly virulent race F of *Orobanche cumana* Wallr. in a sunflower line derived from interspecific amphiploids. *Helia* 25:137–143. <https://doi.org/10.2298/HEL0236137P>
- Pérez-Vich B, Akhtouch B, Knapp SJ, Leon AJ, Velasco L, Fernández-Martínez JM, Berry ST (2004) Quantitative trait loci for broomrape (*Orobanche cumana* Wallr.) resistance. *Theor Appl Genet* 109:92–102. <https://doi.org/10.1007/s00122-004-1599-7>
- Pérez-Vich B, Berry ST, Velasco L, Fernández-Martínez JM, Gandhi S, Freeman C, Heesacker A, Knapp SJ, Leon AJ (2005) Molecular mapping of nuclear male-sterility genes in sunflower. *Crop Sci* 45:1851–1857. <https://doi.org/10.2135/cropsci2004.0684>
- Pérez-Vich B, Velasco L, Rich PJ, Ejeta G (2013) Marker-assisted and physiology-based breeding for resistance to Orobancheaceae. In: Joel DM, Gressel J, Musselman LJ (eds) *Parasitic Orobancheaceae*. Springer, Berlin, Heidelberg, pp 369–391. https://doi.org/10.1007/978-3-642-38146-1_21
- Qi LL, Talukder ZI, Ma GJ, Seiler GJ (2023) Introgression and targeting of the *Pl₃₇* and *Pl₃₈* genes for downy mildew resistance from wild *Helianthus annuus* and *H. praecox* into cultivated sunflower (*Helianthus annuus* L.). *Theor Appl Genet* 136:82. <https://doi.org/10.1007/s00122-023-04316-y>
- Rice P, Longden I, Bleasby A (2000) EMBOSS: The European Molecular Biology Open Software Suite. *Trends Genet* 16:276–277. [https://doi.org/10.1016/S0168-9525\(00\)02024-2](https://doi.org/10.1016/S0168-9525(00)02024-2)
- Rieseberg LH (2006) Hybrid speciation in wild sunflowers. *Annals of the Missouri Botanical Garden* 93:34–48. <http://www.jstor.org/stable/40035044>
- Rodríguez-Ojeda MI, Pineda-Martos R, Alonso LC, Fernández-Escobar J, Fernández-Martínez JM, Pérez-Vich B, Velasco L (2013) A dominant avirulence gene in *Orobanche cumana* triggers *Or5* resistance in sunflower. *Weed Res* 53:322–327. <https://doi.org/10.1111/wre.12034>
- Ruso J, Sukno S, Domínguez-Giménez J, Melero-Vara JM, Fernández-Martínez JM (1996) Screening of wild *Helianthus* species and derived lines for resistance to several populations of *Orobanche cernua*. *Plant Dis* 80:1165–1169. <https://doi.org/10.1094/PD-80-1165>
- Sadanandom A, Bailey M, Ewan R, Lee J, Nelis S (2012) The ubiquitin-proteasome system: central modifier of plant signalling. *New Phytol* 196:13–28. <https://doi.org/10.1111/j.1469-8137.2012.04266.x>
- Seiler GJ, Jan C-C (2014) Wild sunflower species as a genetic resource for resistance to sunflower broomrape (*Orobanche cumana* Wallr.). *Helia* 37:129–139. <https://doi.org/10.1515/helia-2014-0013>
- Seiler GJ, Qi LL, Marek LF (2017) Utilization of sunflower crop wild relatives for cultivated sunflower improvement. *Crop Sci* 57:1083–1101. <https://doi.org/10.2135/cropsci2016.10.0856>
- Serghini K, Pérez De Luque A, Castejón-Muñoz M, García-Torres L, Jorrín JV (2001) Sunflower (*Helianthus annuus* L.) response to broomrape (*Orobanche cernua* Loeffl.) parasitism: Induced synthesis and excretion of 7-hydroxylated simple coumarins. *J Exp Bot* 52:2227–2234. <https://doi.org/10.1093/jxbbot/52.364.2227>
- Shiu SH, Bleecker AB (2001) Receptor-like kinases from Arabidopsis form a monophyletic gene family related to animal receptor kinases. *Proc Natl Acad Sci U S A* 98:10763–8. <https://doi.org/10.1073/pnas.181141598>
- Shiu SH, Karlowski WM, Pan R, Tzeng YH, Mayer KF, Li WH (2004) Comparative analysis of the receptor-like kinase family in Arabidopsis and rice. *Plant Cell* 16:1220–1234. <https://doi.org/10.1105/tpc.020834>
- Sisou D, Tadmor Y, Plakhine D, Ziadna H, Hübner S, Eizenberg H (2021) Biological and transcriptomic characterization of pre-haustorial resistance to sunflower broomrape (*Orobanche cumana* W.) in sunflowers (*Helianthus annuus*). *Plants* 10:1810. <https://doi.org/10.3390/plants10091810>
- Škorić D, Joița-Păcureanu M, Gorbachenko F, Gorbachenko O, Maširević S (2021) Dynamics of change in broomrape populations (*Orobanche cumana* Wallr.) in Romania and Russia (Black Sea area). *Helia* 44:1–14. <https://doi.org/10.1515/helia-2020-0025>
- Sokal RR, Rohlf FJ (1995) *Biometry*. Freeman, New York
- Steinbrenner AD (2020) The evolving landscape of cell surface pattern recognition across plant immune networks. *Curr Opin Plant Biol* 56:135–146. <https://doi.org/10.1016/j.pbi.2020.05.001>
- Tang S, Heesacker A, Kishore VK, Fernandez A, Sadik ES, Cole G, Knapp SJ (2003) Genetic mapping of the *Or5* gene for resistance to *Orobanche* race E in sunflower. *Crop Sci* 43:1021–1028. <https://doi.org/10.2135/cropsci2003.1021>
- Untergasser A, Cutcutache I, Koressaar T, Ye J, Faircloth BC, Remm M, Rozen SG (2012) Primer3—new capabilities and interfaces. *Nucleic Acids Res* 40:e115. <https://doi.org/10.1093/nar/gks596>
- Velasco L, Pérez-Vich B, Fernández-Martínez JM (2003) Evaluation of wild sunflower species for tocopherol content and composition. Sixth European Conference on Sunflower Biotechnology, Sevilla, 5–9 Octubre 2003.
- Velasco L, Pérez-Vich B, Jan CC, Fernández-Martínez JM (2007) Inheritance of resistance to broomrape (*Orobanche cumana* Wallr.) race F in a sunflower line derived from wild sunflower species. *Plant Breed* 126:67–71. <https://doi.org/10.1111/j.1439-0523.2006.01278.x>
- Velasco L, Pérez-Vich B, Yassein AAM, Jan CC, Fernández-Martínez JM (2012) Inheritance of resistance to sunflower broomrape (*Orobanche cumana* Wallr.) in a interspecific cross between *Helianthus annuus* and *Helianthus debilis* subsp. *tardiflorus*. *Plant Breed* 121:220–221. <https://doi.org/10.1111/j.1439-0523.2011.01915.x>
- Voorrips RE (2002) MapChart: Software for the graphical presentation of linkage maps and QTL. *J Hered* 93:77–78. <https://doi.org/10.1093/jhered/93.1.77>
- Wang G, Ellendorff U, Kemp B, Mansfield JW, Forsyth A, Mitchell K, Bastas K, Liu CM, Woods-Tör A, Zipfel C, de Wit PJGM, Jones JDG, Tör M, Thomma BPHJ (2008) A genome-wide functional investigation into the roles of receptor-like proteins in Arabidopsis. *Plant Physiol* 147:503–517. <https://doi.org/10.1104/pp.108.119487>
- Wang J, Qu B, Dou S, Li L, Yin D, Pang Z, Zhou Z, Tian M, Liu G, Xie Q, Tang D, Chen X, Zhu L (2015) The E3 ligase *OsPUB15* interacts with the receptor-like kinase *PID2* and regulates plant cell death and innate immunity. *BMC Plant Biol* 15:49. <https://doi.org/10.1186/s12870-015-0442-4>
- Zhang S, Chen C, Li L, Meng L, Singh J, Jiang N, Deng X-W, He Z-H, Lemaux PG (2005) Evolutionary expansion, gene Structure, and

expression of the rice wall-associated kinase gene family. *Plant Physiol* 139:1107–1124. <https://doi.org/10.1104/pp.105.069005>

Zhou B, Mural RV, Chen X, Oates ME, Connor RA, Martin GB, Gough J, Zeng L (2017) A subset of ubiquitin-conjugating enzymes is essential for plant immunity. *Plant Physiol* 173:1371–1390. <https://doi.org/10.1104/pp.16.01190>

Publisher's Note Springer Nature remains neutral with regard to jurisdictional claims in published maps and institutional affiliations.