



HAL
open science

Characterization of the mucus lining a co-culture model of Caco-2/HT29-MTX cells

Yann Le Gouar, Nathalie Daniel, Thierry Pécot, Martine Morzel

► **To cite this version:**

Yann Le Gouar, Nathalie Daniel, Thierry Pécot, Martine Morzel. Characterization of the mucus lining a co-culture model of Caco-2/HT29-MTX cells. <https://www.icfd2024.com/scientific-program>. 8th International Conference on FOOD DIGESTION, Apr 2024, Porto, Portugal. , 2024. hal-04546295

HAL Id: hal-04546295

<https://hal.inrae.fr/hal-04546295>

Submitted on 15 Apr 2024

HAL is a multi-disciplinary open access archive for the deposit and dissemination of scientific research documents, whether they are published or not. The documents may come from teaching and research institutions in France or abroad, or from public or private research centers.

L'archive ouverte pluridisciplinaire **HAL**, est destinée au dépôt et à la diffusion de documents scientifiques de niveau recherche, publiés ou non, émanant des établissements d'enseignement et de recherche français ou étrangers, des laboratoires publics ou privés.



Distributed under a Creative Commons Attribution - NonCommercial - NoDerivatives 4.0
International License

Characterization of the mucus lining a co-culture model of Caco-2/HT29-MTX cells

Yann Le Gouar ^a, Nathalie Daniel ^a, Thierry Pécot ^b and Martine Morzel ^a

^a STLO, INRAE, Institut Agro, Rennes, France ^b FAIIA core facility, Biosit (UAR 3480 CNRS - US 18 Inserm), Rennes University, France

Introduction

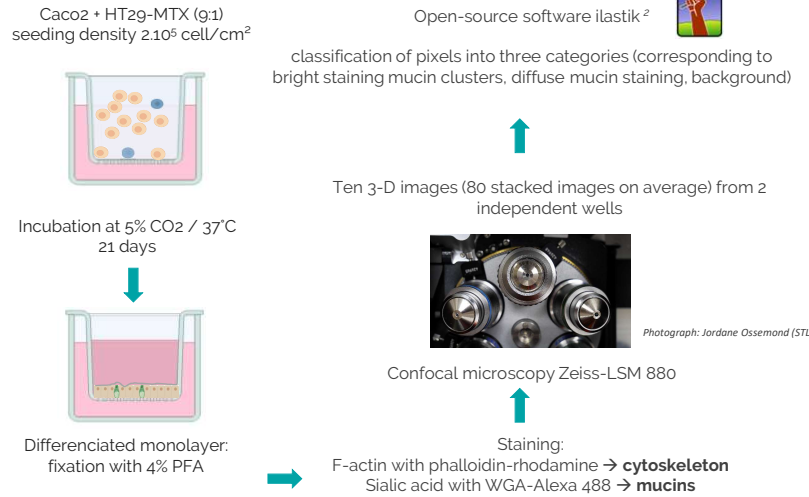
Context

- Co-cultures integrating enterocyte-like cells (Caco-2) and goblet cells (HT29-MTX), are promising models of a functional epithelial barrier ¹.
- It is expected that such cultures are lined by a mucus layer but the spatial characteristics of this layer is poorly described.

Objectives

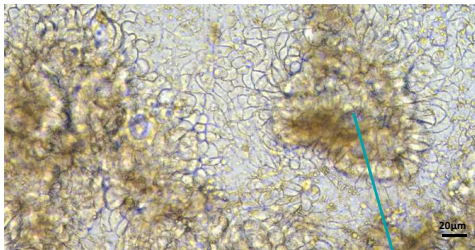
- To visualize mucins in a co-culture of Caco-2/HT29-MTX
- To set up a method of mucus characterization based on image analysis

Materials and methods



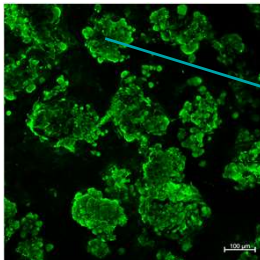
Results

1- Uneven distribution of the mucus



Observation of cultures by optical microscopy (X20)

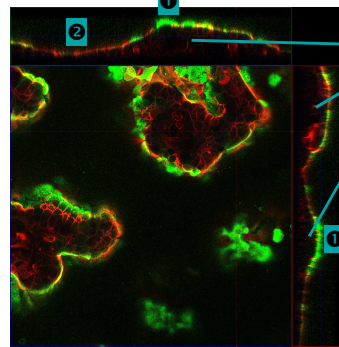
Cells are confluent and they form a monolayer but some cells are grouped and lined with a blurry material



Mucins are abundantly expressed as clusters

Observation of cultures after staining of sialic acid

2- A typical topography



Observation of one stack of a 3-D reconstituted image

The culture is not planar. Domes (visible on z-views) are present. Height up to 135 µm.

Mucins are present mainly at the apical sides of domes (see 1 bright staining; sites of secretion) but also between domes (see 2 diffuse staining: secreted mucins spreading over the culture, loose mucus)

3- Development of an image analysis workflow to characterize the mucus structure

Machine learning: annotation of pixels representative of bright /diffuse staining on a subset of images, followed by automatic classification on all images.

Extraction of quantitative data

	Dense mucin clusters	Loose mucus
Average thickness	6.9 µm	21.2 µm
Average volume	183000 µm ³	7502000 µm ³

On-going: segmentation and classification of cells

Conclusions

- Staining of sialic acid and confocal microscopy enable three-dimensional visualization of the mucus layer
- The mucus on the co-culture model is heterogenous in density
- The protocol of image analysis is suitable to extract quantitative data on the mucus layer (NB: lower thickness than *in vivo* data)

These methodological developments open the way to studying the impact of digested food constituents or digested foods on the intestinal mucus

References:

- (1) Béduneau et al. 2014. A Tunable Caco-2/HT29-MTX Co-Culture Model Mimicking Variable Permeabilities of the Human Intestine Obtained by an Original Seeding Procedure. Eur J Pharm Biopharm 87 (2), 290-298.
 (2) Berg et al. 2019. A. Ilastik: Interactive Machine Learning for (Bio)Image Analysis. Nat Methods 16 (12), 1226-1232.