



**HAL**  
open science

## The fate of salivary proteins-apple polyphenols complexes during gastric digestion

Müzeyyen Berkel Kasikci, Sophie Guilois-Dubois, Kevin Billet, Julien Jardin, Sylvain Guyot, Martine Morzel

► **To cite this version:**

Müzeyyen Berkel Kasikci, Sophie Guilois-Dubois, Kevin Billet, Julien Jardin, Sylvain Guyot, et al.. The fate of salivary proteins-apple polyphenols complexes during gastric digestion. <https://www.icfd2024.com/scientific-program>. 8th International Conference on FOOD DIGESTION, Apr 2024, Porto, Portugal. , 2024. hal-04546322

**HAL Id: hal-04546322**

**<https://hal.inrae.fr/hal-04546322>**

Submitted on 15 Apr 2024

**HAL** is a multi-disciplinary open access archive for the deposit and dissemination of scientific research documents, whether they are published or not. The documents may come from teaching and research institutions in France or abroad, or from public or private research centers.

L'archive ouverte pluridisciplinaire **HAL**, est destinée au dépôt et à la diffusion de documents scientifiques de niveau recherche, publiés ou non, émanant des établissements d'enseignement et de recherche français ou étrangers, des laboratoires publics ou privés.



Distributed under a Creative Commons Attribution - NonCommercial - NoDerivatives 4.0 International License

# The fate of salivary proteins-apple polyphenols complexes during gastric digestion

Müzeyyen Berkel Kasikci <sup>a,b</sup>, Sophie Guilois-Dubois <sup>c</sup>, Kevin Billet <sup>c</sup>, Julien Jardin <sup>a</sup>, Sylvain Guyot <sup>c</sup>, Martine Morzel <sup>a</sup>

<sup>a</sup> STLO, INRAE, Institut Agro, Rennes, France <sup>b</sup> Manisa Celal Bayar University, Department of Food Engineering, Manisa, Turkey <sup>c</sup> INRAE, BIA, Le Rheu, France

## Introduction

### Context

- Despite recognized health benefits, some polyphenols referred to as **tannins** exhibit **anti-nutritional properties**.
- Binding of tannins by **salivary proteins** (especially Proline-Rich Proteins: PRPs) prior to the stomach may therefore act as a **protective mechanism** against their deleterious effects on digestion.
- It is not entirely clear how the complexes formed in the oral cavity behave in the harsh digestive environment.

### Objectives

- To describe the interactions between salivary proteins and apple polyphenols
- To study the impact of gastric digestion on the resulting complexes

## Materials and methods

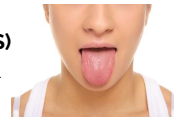
### Polyphenols (PO) extract from Dous Moën cider apples



Polyphenols: 730g /kg  
Procyanidins: 322 g/kg  
Mean DP: 3.2

Phenolic compound	Concentration (g/kg)
CAT : (+)-catechin	29.5
EC: (-)-epicatechin	63.5
PA-B1 : procyanidin dimer B1	22.4
PA-B2 : procyanidin dimer B2	44.0
PA-B5 : procyanidin dimer B5	2.9
PA-C1 : procyanidin trimer C1	21.1
DP4 : procyanidin tetramer	12.3
CGA : 5'-O-caffeoylquinic acid	237.9
PCQ : 4-O- <i>para</i> -coumaroylquinic acid	37.0
XPL : phlorizin 2'-O-xylglucoside	24.8
PLZ : phlorizin	13.9

**Human saliva (S)**  
proteins: 0.72 g/L



Polyphenols to protein ratios: 0.16/0.32/0.48/0.80  
incubation 10 minutes  
centrifugation  
supernatants and pellets analyzed

**Saliva alone**  
**Polyphenols alone**  
**Mixtures**



Polyphenols to protein ratios: 0.16 / 0.80  
static INFOGEST gastric digestion  
centrifugation of end-point samples  
supernatants and pellets analyzed

### Protein profiles & identification

(supernatants and pellets)

SDS-PAGE + nano LC ESI MS/MS

PRP detection: Coomassie blue R staining

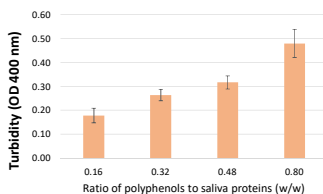
### Native polyphenols analysis

(supernatants)

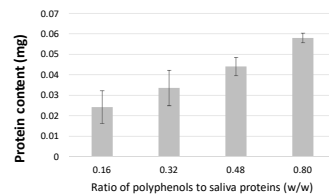
UPLC-DAD-MS

## Results

### Interactions polyphenols-saliva proteins

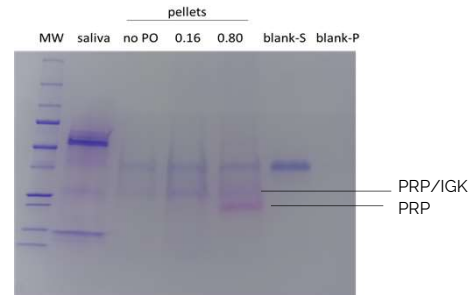


Turbidity of whole samples increases with PO/S ratio: formation of increasingly large aggregates



Amount of proteins increases in pellets with PO/S ratio: dose-dependent precipitation

### Impact of gastric digestion

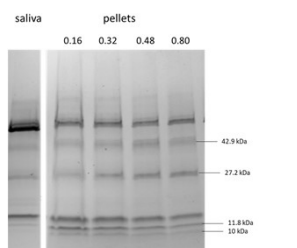


The complexes formed with CA6 and SA100-A8 before digestion are proteolyzed, while the one containing PRP/IGK persist  
Formation of a new PRP-PO complex.

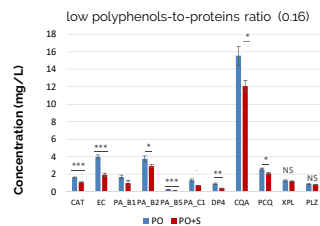
**Table 1.** Changes induced by digestion on concentrations of procyanidins in supernatants. Values are presented only when significant.

	PA-B1	PA-B2	PA-B5	PA-C1	DP4
low PO load	PO	+48 % **	+51 % ***	-17 % *	-17 % *
	PO+S		-100 % **	-70 % **	-63 % **
high PO load	PO	+56 % ***	+16 % ***		
	PO+S	+20 % *		-23 % *	

Digestion in presence of saliva: insolubilization of a large proportion of PA-B5, PA-C1 and DP4 (tannins highly reactive towards saliva proteins). Interaction with proteins or proteolytic fragments.



Four bands enriched in pellets: PRPs/IGK and two zinc-binding proteins (carbonic anhydrase 6 and SA100-A8)



**Low PO/S ratio:** all polyphenols classes except dihydrochalcones are decreased in supernatants in presence of saliva.

**High PO/S ratio:** only procyanidins with high DP precipitate.

## Conclusions

- PRPs can efficiently precipitate apple polyphenols. Two zinc-binding proteins can also form insoluble complexes with polyphenols.
- The classes of polyphenols involved in such complexes depend on the polyphenols-to-protein ratio.
- *In vitro* gastric digestion leads to extensive proteolysis of salivary proteins. Some resulting fragments can interact with and precipitate procyanidins.

Saliva may partly modulate bio-accessibility of procyanidins in the gastric compartment.