



HAL
open science

PPILOW: Innovations for improving welfare in low-input outdoor and organic pig and poultry farms

Anne Collin, Jarkko Niemi, Martina Re, Frank A.M. Tuyttens, Evelien Graat, Charlotte Vanden Hole, Laura Warin, T. Bas Rodenburg, Sarah Lombard, Claire Bonnefous, et al.

► To cite this version:

Anne Collin, Jarkko Niemi, Martina Re, Frank A.M. Tuyttens, Evelien Graat, et al.. PPILOW: Innovations for improving welfare in low-input outdoor and organic pig and poultry farms. EAAP Webinar: Impacts of Poultry European projects, EAAP, Apr 2024, Online, Belgium. hal-04613557

HAL Id: hal-04613557

<https://hal.inrae.fr/hal-04613557>

Submitted on 16 Jun 2024

HAL is a multi-disciplinary open access archive for the deposit and dissemination of scientific research documents, whether they are published or not. The documents may come from teaching and research institutions in France or abroad, or from public or private research centers.

L'archive ouverte pluridisciplinaire **HAL**, est destinée au dépôt et à la diffusion de documents scientifiques de niveau recherche, publiés ou non, émanant des établissements d'enseignement et de recherche français ou étrangers, des laboratoires publics ou privés.



Distributed under a Creative Commons Attribution - NonCommercial 4.0 International License



Innovations for improving welfare in low-input outdoor and organic pig and poultry farms

*Anne Collin, Jarkko Niemi, Martina Re, Frank Tuyttens, Evelien Graat,
Charlotte vanden Hole, Laura Warin, T. Bas Rodenburg, Sarah Lombard, Claire Bonnefous,
Elisabeth Le Bihan-Duval, Sophie Réhault-Godbert, Sanna Steinfeldt, Petra Thobe, Marlene Sciarretta,
Riccardo Carelli, Monica Coletta*

EAAP Webinar: Impacts of Poultry European projects – 2024-04-16





Why is it important to consider welfare in low-input outdoor and organic farming systems?

- High quality of the rearing practices and of the products
- Diversity of practices throughout Europe
- Still a need to improve animal welfare and limit mortality, in relation to the outdoor access challenging the animals, ethical issues, the wish of practitioners and societal expectations

Objective of PPILOW: Identify, test and evaluate animal welfare-improving practices by taking into account environmental, economic and social impacts including human well-being

One Welfare concept (Garcia Pinillos et al., 2016)

H2020 PPILOW partners and collaborators



PPILOW

Poultry and Pig Low-input and Organic production systems' Welfare

2019-2024



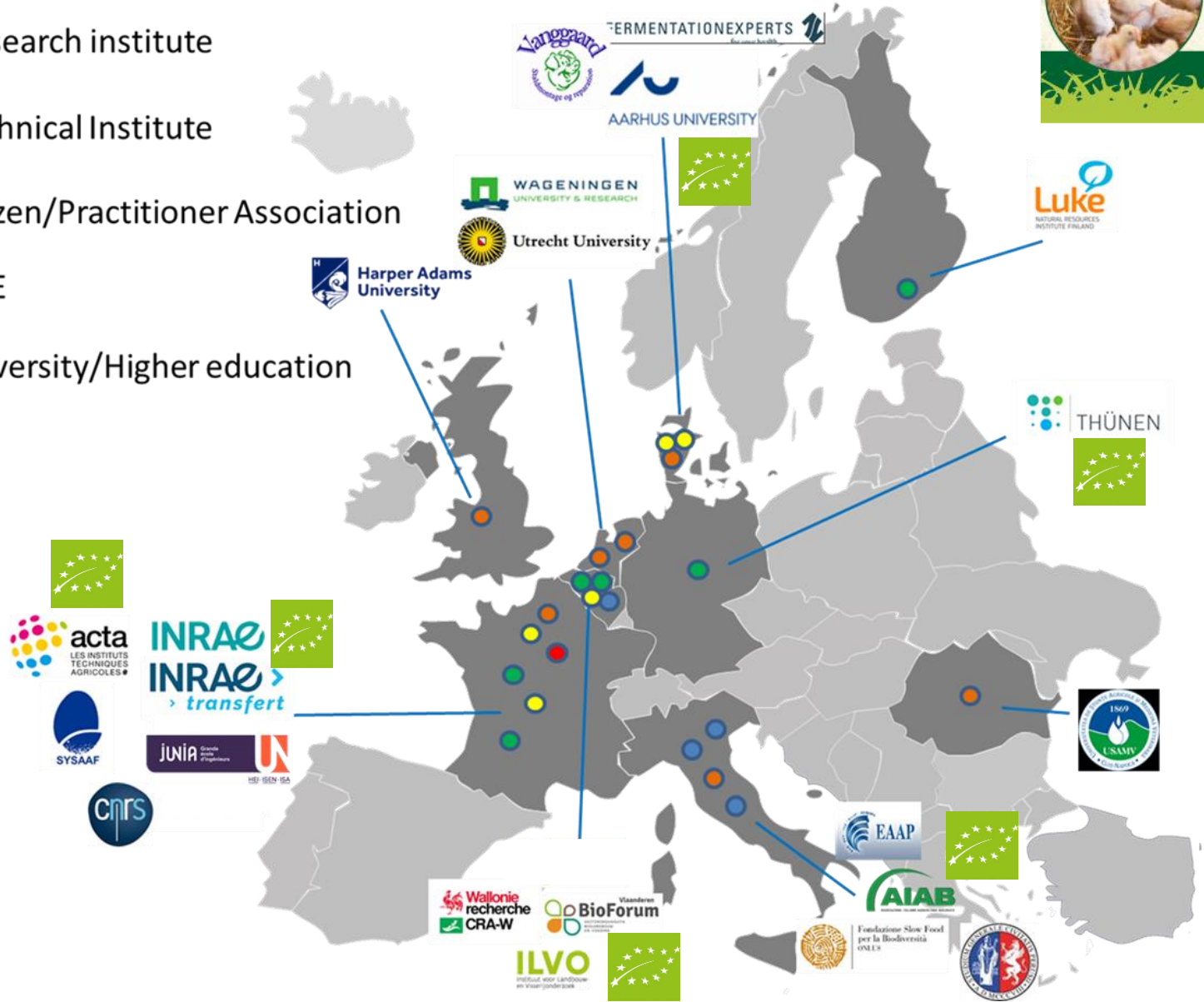
Coordination: **INRAE**

22 PPILOW Partners in 9 countries

9 National Practitioner Groups (NPG): 4 dedicated to pigs and 5 to poultry

www.ppilow.eu

- Research institute
- Technical Institute
- Citizen/Practitioner Association
- SME
- University/Higher education



PPILOW Involvement of National Practitioner Groups

Innovative breeding and rearing strategies



Favouring positive behaviours, improving health and robustness

Avoiding feather pecking in non beak-trimmed hens and the elimination of layer male chicks



PPILOW Impact generated by the project

- Knowledge base for further improvements in animal welfare management and policy making

Practice Abstract n. 5



Stakeholders' views regarding the key challenges in organic and low-input pig farming

Practice Abstract n. 6



Perceived usefulness and feasibility of measures to enhance animal welfare in organic and outdoor-reared pigs and poultry

Review of European Pig and Poultry Productions Systems and Marketing Labels Elaborating Animal Welfare

Jarkko K. Niemi¹, Katrina Heinola¹, Minna Väre¹, Claire Bonnefous¹, Lisa Baldinger², Vasilie Cozma³, Virginie Decruyenaere⁴, Jonathan Hercule⁵, Sophie Herremans⁶, Christine Leterrier⁷, Antoine Roinsard⁸, Patricia Parrott⁹, Petra Thobe⁷ and Anne Collin¹



frontiers | Frontiers in Veterinary Science

TYPE Review
PUBLISHED 05 August 2022
DOI: 10.3389/fvets.2022.952922

Check for updates

Welfare issues and potential solutions for laying hens in free range and organic production systems: A review based on literature and interviews

OPEN ACCESS

EDITED BY
Sabine C. Gebhardt-Henrich, University of Bern, Switzerland

REVIEWED BY
Dana L. M. Campbell, Commonwealth Scientific and Industrial Research Organisation (CSIRO), Australia
Enver Cavusoglu, Uludağ University, Turkey
Werner Beses, University of Hohenheim, Germany
Peter Groves, The University of Sydney, Australia

*CORRESPONDENCE
Christine Leterrier
christine.leterier@inrae.fr

SPECIALTY SECTION
This article was submitted to Animal Behavior and Welfare, a section of the journal Frontiers in Veterinary Science

Claire Bonnefous¹, Anne Collin¹, Laurence A. Guilloteau¹, Vanessa Guesdon², Christine Filiat¹, Sophie Réhault-Godbert¹, T. Bas Rodenburg⁴, Frank A. M. Tuytens^{5,6}, Laura Warin⁷, Sanna Steinfeldt⁸, Lisa Baldinger⁹, Martina Re¹⁰, Raffaella Ponzio¹¹, Anna Zuliani¹², Pietro Venezia¹², Minna Väre¹³, Patricia Parrott¹⁴, Keith Walley¹⁴, Jarkko K. Niemi¹⁵ and Christine Leterrier^{16*}

SCHOLARONE[™] Manuscripts

Consumers' views on egg quality and preferences for responsible production – Results from nine European countries

Journal:	British Food Journal
Manuscript ID:	BFJ-03-2023-0183
Manuscript Type:	Research Paper
Keywords:	Egg consumption, Food quality, Sustainability attributes, Responsible production

LUKE, HAU, Thuenen Institute, INRAE and all PPILOW collaborators

- Contribution to a better understanding of animal welfare and associated animal behaviour

Knowledge on the adaptability of poultry breeds to the use of outdoor area depending on their cognitive capacities and genetic, physiological, metabolic background and rearing conditions for proposing innovating levers for welfare improvement

frontiers in Veterinary Science

ORIGINAL RESEARCH
PUBLISHED 07 February 2022
DOI: 10.3389/fvets.2022.814034

Foraging Behavior Shows Individual-Consistency Over Time, and Predicts Range Use in Slow-Growing Free-Range Male Broiler Chickens

OPEN ACCESS

Vitor Hugo Bessa Ferreira^{1,2,5*}, Arthur Simoni^{1,5}, Karine Germain³, Christine Leterrier⁶, Léa Lansade⁴, Anne Collin¹, Sandrine Mignon-Grasteau⁷, Elisabeth Le Bihan-Duval⁸, Elodie Guettier⁹, Héléne Leruste¹, Marine Louve¹, Ludovic Calandreau² and Vanessa Guesdon^{1*}

scientific reports

Check for updates

Working for food is related to range use in free-range broiler chickens

Vitor Hugo Bessa Ferreira^{1,2,5*}, Arthur Simoni^{1,5}, Karine Germain³, Christine Leterrier⁶, Léa Lansade⁴, Anne Collin¹, Sandrine Mignon-Grasteau⁷, Elisabeth Le Bihan-Duval⁸, Elodie Guettier⁹, Héléne Leruste¹, Ludovic Calandreau^{2,6,7} & Vanessa Guesdon^{1,6}

PLOS ONE

RESEARCH ARTICLE

Intake of nutrients (polyunsaturated fatty acids, tocopherols, and carotenoids) and storage efficiency in different slow-growing chickens genotypes reared in extensive systems

Simona Mattioli^{1*}, Alice Carloni Mancinelli¹, Alessandro Dal Bosco¹, Claudia Ciarelli², Monica Guarino Amato³, Elisa Angelucci⁴, Diletta Chiattelli⁵, Cesare Castellini¹

Applied Animal Behaviour Science 260 (2023) 105870

Contents lists available at ScienceDirect

Applied Animal Behaviour Science

journal homepage: www.elsevier.com/locate/applanim

Behavioural indicators of range use in four broiler strains

Claire Bonnefous^{1*}, Ludovic Calandreau², Elisabeth Le Bihan-Duval³, Vitor Hugo Bessa Ferreira^{4,5}, Alexandre Barbin⁶, Anne Collin⁷, Maxime Reverchon⁸, Karine Germain⁹, Laure Ravon⁴, Nina Kruger¹, Sandrine Mignon-Grasteau^{10,11}, Vanessa Guesdon^{1*}



PPILOW Impact generated by the project

- Broader range of animal welfare management strategies and tools

Management strategies to **avoid feather pecking** in non-beak-trimmed laying hens

Utrecht University, WUR, ILVO



*Effects of green light in the setter-hatcher and of insect larvae for chicks;
Management of the free range and design of the barn: foraging and exploration behaviours and avoid fearfulness*

Management, and nutrition strategies and techniques aiming at **preventing diseases, parasitic risk, improving incubation and early-life conditions**, and selection tools to improve animal robustness

Incubation conditions and early life management for improving resilience in slow-growing chickens (WU, INRAE, ILVO, UU)



- Incubation temperatures for improving the resilience of slow-growing broilers



- Field studies: on-farm hatching in label-type and organic farms from the French National Practitioner Group

WUR, ILVO, Utrecht University, INRAE, Aarhus University

- Test of fermented or treated feeds for preventing pathologies in laying hens

Anticipation of National legislations and knowledge for practitioners and European policy makers: Alternatives to the elimination of layer male chicks



Layer strain

Selection based on egg production, egg quality traits

Culling of layer male chicks



FR: Article R214-17

- From 01/01/2023 : all hatcheries have to be equipped with operational material to avoid culling chick
 -> Special case when it is not possible to respect the decree (white strains)

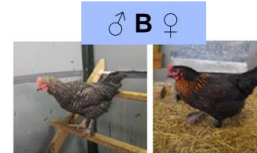
DE: Article TierSchtG Art. 1 § 4c

- From 01/01/2022 : makes it a punishable offence to kill a vertebrate animal "without reasonable cause" (unprofitability) or to cause it suffering and pain

Two strategies developed in PPILOW

- Study of dual-purpose strains experimentally and on-farm

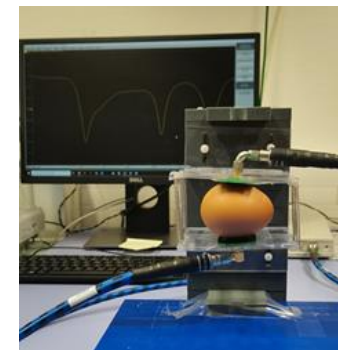
Multiperformance data, multicriteria analysis and business models



ACTA(ITAB)
 Thuenen
 Institute
 Aarhus
 University
 INRAE
 SYSAAF

© Photos / Pluschke

- Development of an on-ovo sexing tool:
Non invasive method
As early as possible



Open Access Article

Dual-Purpose Poultry in Organic Egg Production and Effects on Egg Quality Parameters

by Marianne Hammershøj^{1,*}, Gitte Hald Kristiansen¹ and Sanna Steinfeldt²

¹ Department of Food Science, Aarhus University, Agro Food Park 48, DK-8200 Aarhus, Denmark

² Department of Animal Science, Aarhus University, Blichers Alle 20, DK-8830 Tjele, Denmark

* Author to whom correspondence should be addressed.

PPILOW Impact generated by the project

Technological innovations

- Co-development of tools for **welfare self-assessment** in pigs and poultry :

extension of the EBENE® app and development of the PIGLOW app

ILVO, ITAVI, UU, JUNIA, INRAE

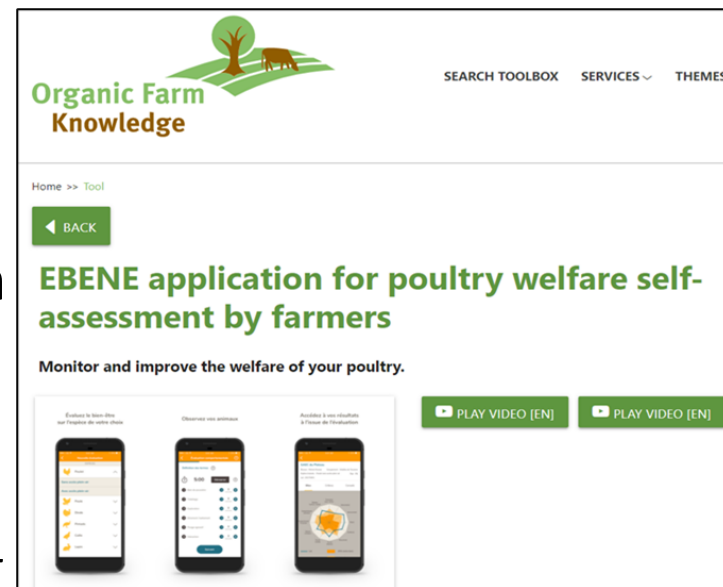
Already 984 EBENE® evaluations in 2023

2021 - 2023: 340 assessments for outdoor broilers and 390 for outdoor laying hens – feedbacks from farmers

- Provision for sustainability conceptual framework according to the One Welfare concept (*Garcia Pinillos et al., 2016*):

Inclusion of an Animal Welfare pillar in the Assessment grids for Multicriteria analyses

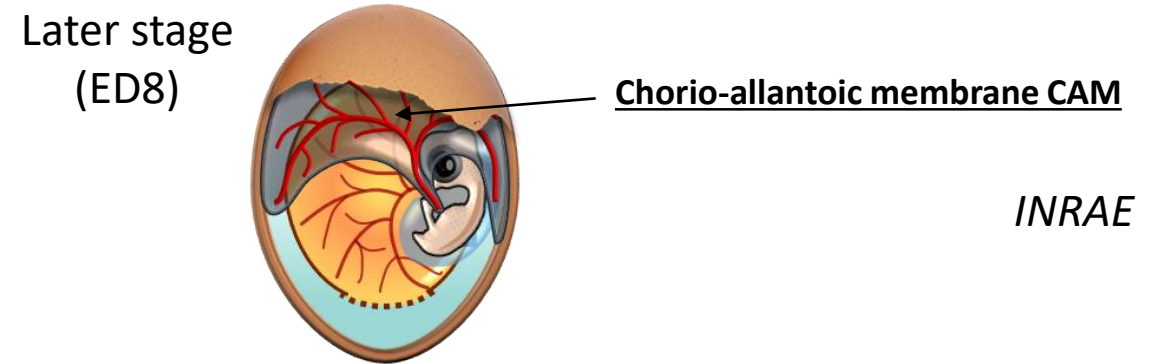
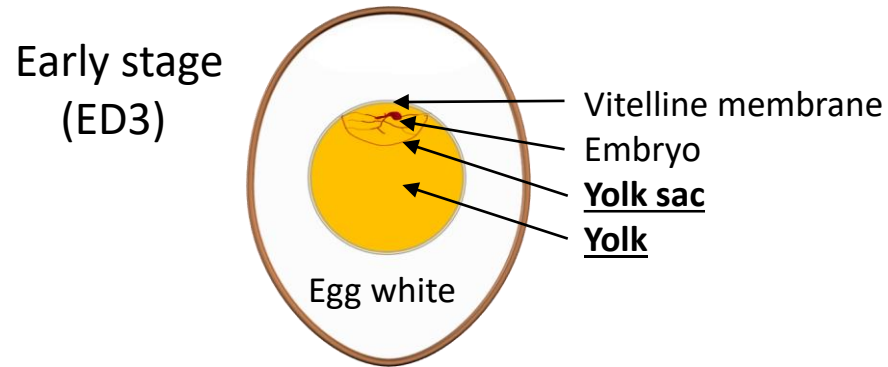
UNIPG and partners



SUSTAINABILITY PILLAR	ONE WELFARE DIMENSIONS
Society	Working conditions for farmer
	Job perception
	Job motivation
	Connection with territory
	Social Acceptance
Animal Welfare	Good Feeding
	Good Environment (Housing)
	Good Health
	Appropriate Behaviour
	Depopulation
Economy	Performance- quantity
	Performance- quality
	Returns
	Costs
Environment	Enhance biodiversity
	Reduce pollution (soil, air, water)
	Minimize external resources used

Provision of in-ovo sexing tool

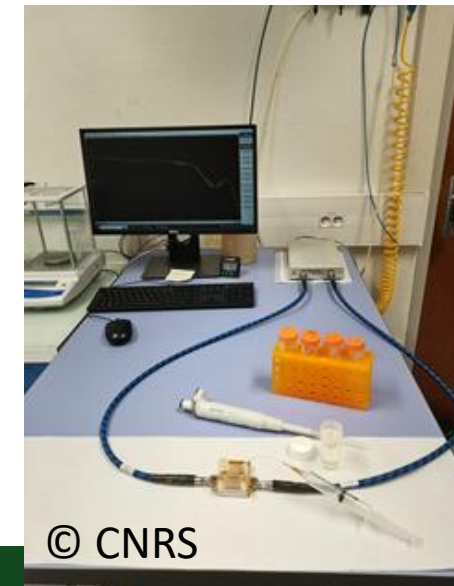
Early markers of male and female embryos in egg contents and extra-embryonic membranes



Molecular profiles: markers of sex during the first week of incubation

Development of a new radio-frequency based method for “on-ovo sexing”

Millifluidic Sensor



Second generation of in-ovo sexing tools

PPILOW Poultry production issues addressed and the follow up status



Use of the
PIGLOW and
EBENE welfare
self-assessment
applications



Longitudinal field studies

ILVO, ITAVI, UU

Country	NPG	Overview of the innovations implemented on-farm
NL	Poultry	Working on feather pecking and dual-purpose genotypes with a group of farmers and a coop with a focus on layers
DE		Broilers from dual-purpose genotype started from December 2021 to March 2022 and on-farm trial are still on-going 🇪🇺
FR		Broilers from dual-purpose genotype were reared in France (December 2021 – March 2022). Laying hens of one PPILOW dual-purpose genotype have been reared on the same farm since April 2022. 🇪🇺
DK		Pullets from two dual-purpose genotypes reared in France were then tested on-farm in Denmark. One farmer expressed interest in the dual-purpose genotypes during NPG-meetings and received young hens from two genotypes for the trial 🇪🇺
FR		On-farm hatching of slow-growing chicks tested 🇪🇺
DE		The testing of on-farm hatching is in the planning phase 🇪🇺
DK		On-farm study with laying hens to test the most promising plant or plant extracts on intestinal infections with especially <i>Ascaridia galli</i> .
DE		The testing of a product from Fermentation Experts company is in the planning phase
NL_BE		Alternatives to anthelmintics (planning phase)

AIAB and partners

PPILOW Raising awareness, technical days and training, information for practitioners and policy makers

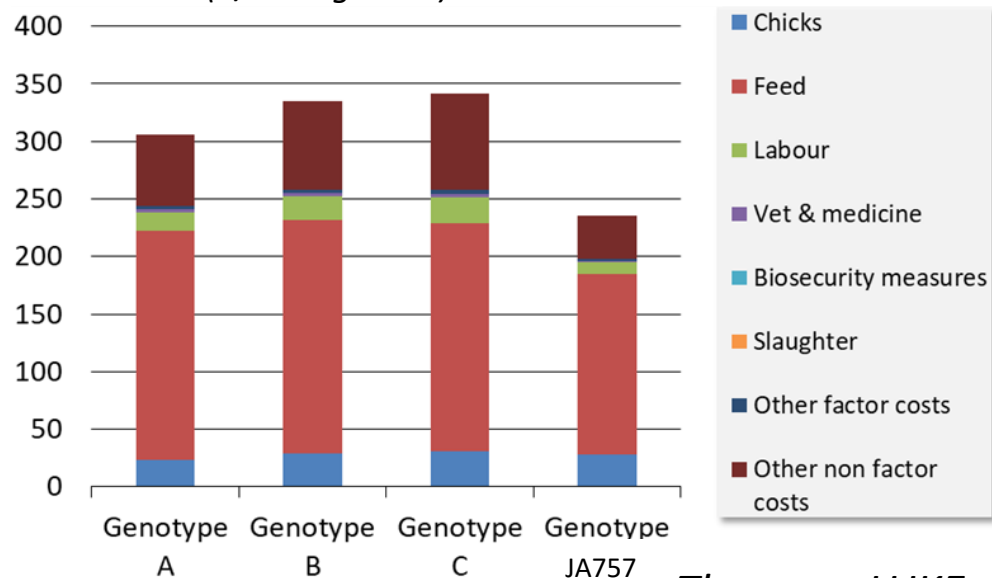
www.ppilow.eu

EAAP, AIAB and partners

Provision of multicriteria analyses for breed x outdoor run types (agroforestry) and the use of dual-purpose breeds

Business models concerning on-farm hatching, the use of different broiler breeds in organic systems, the use of dual-purpose breeds and of the on-ovo sexing tool

Production costs (€/100 kg meat)



Thuenen, LUKE, UNIPG

Additionally to scientific communications and publications...

16 Practice Abstracts (EU CAP Network)

7 videos on PPILOW strategy and innovations

8 PPILOW newsletters

Workshops with policy makers and practitioners: 10

Training and technical days : 6

PPILOW Autumn school 2023 (18 presentations)

Webinars (dedicated to poultry):

- On-farm hatching
- Alternatives to the elimination of layer male chicks
- To come: early management levers for increasing resilience

Around 90 practitioners involved
in PPILOW multiactor groups

More research and development on dual-purpose breeds needed for:

- Adapting nutrition using alternative feeds for lower production costs
- Product marketing (smaller carcasses) and communication towards consumers and citizens



Early indicators of range use in broilers: *interest as selection tools for practitioners?*

Test of new incubation thermal programs in commercial hatcheries

Refinement of EBENE app from practitioners' feedback

Refinement of in-ovo sexing tools for industrial use (2nd generation)

How to raise organic broiler breeders and pullets with outdoor access? How to conciliate welfare and biosecurity?



Contributions to the recently launched EUP Animal Health and Welfare and to EU BroilerNet project

- Welfare self-assessment tools and indicators, welfare issues and best practices
- Sustainability assessment methods enlarged to animal welfare criteria



**Complementary information needed on indicators at slaughter house (EU aWISH project)
and on product quality (EU INTAQT project)**



Contribution to knowledge for policy makers concerning further labelling and AW policies

PPILOW PARTNERS



Fondazione Slow Food
per la Biodiversità
ONLUS



Harper Adams
University



Utrecht University



Thanks for your attention!

www.ppilow.eu