



**HAL**  
open science

## How to evaluate welfare in studies? Project H2020

### PPILOW

Anne Collin

► **To cite this version:**

Anne Collin. How to evaluate welfare in studies? Project H2020 PPILOW. Workshop - Comment évaluer le bien être en élevage d'insectes?, Université de Tours, IRBI, INRAE, May 2023, Tours, France. 10.1136/vr.i5470) . hal-04613575

**HAL Id: hal-04613575**

<https://hal.inrae.fr/hal-04613575>

Submitted on 16 Jun 2024

**HAL** is a multi-disciplinary open access archive for the deposit and dissemination of scientific research documents, whether they are published or not. The documents may come from teaching and research institutions in France or abroad, or from public or private research centers.

L'archive ouverte pluridisciplinaire **HAL**, est destinée au dépôt et à la diffusion de documents scientifiques de niveau recherche, publiés ou non, émanant des établissements d'enseignement et de recherche français ou étrangers, des laboratoires publics ou privés.



Distributed under a Creative Commons Attribution - NonCommercial 4.0 International License

# How to evaluate welfare in studies? Project H2020 PPILOW

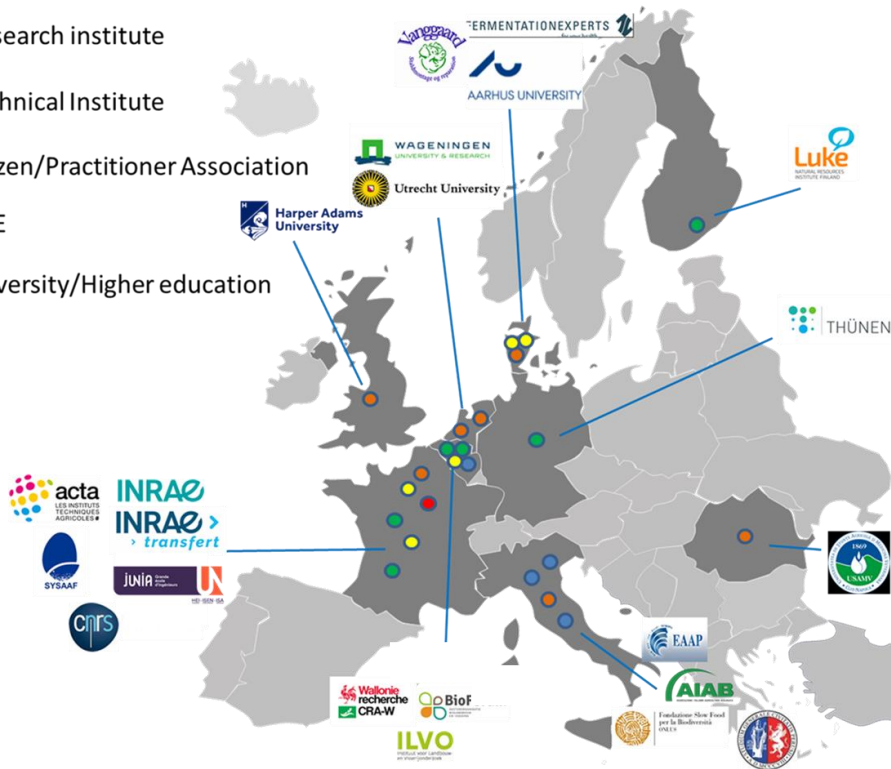


Anne.Collin@inrae.fr

## PPILOW : Poultry and Pig Low-input and Organic production system's Welfare (2019-2024)

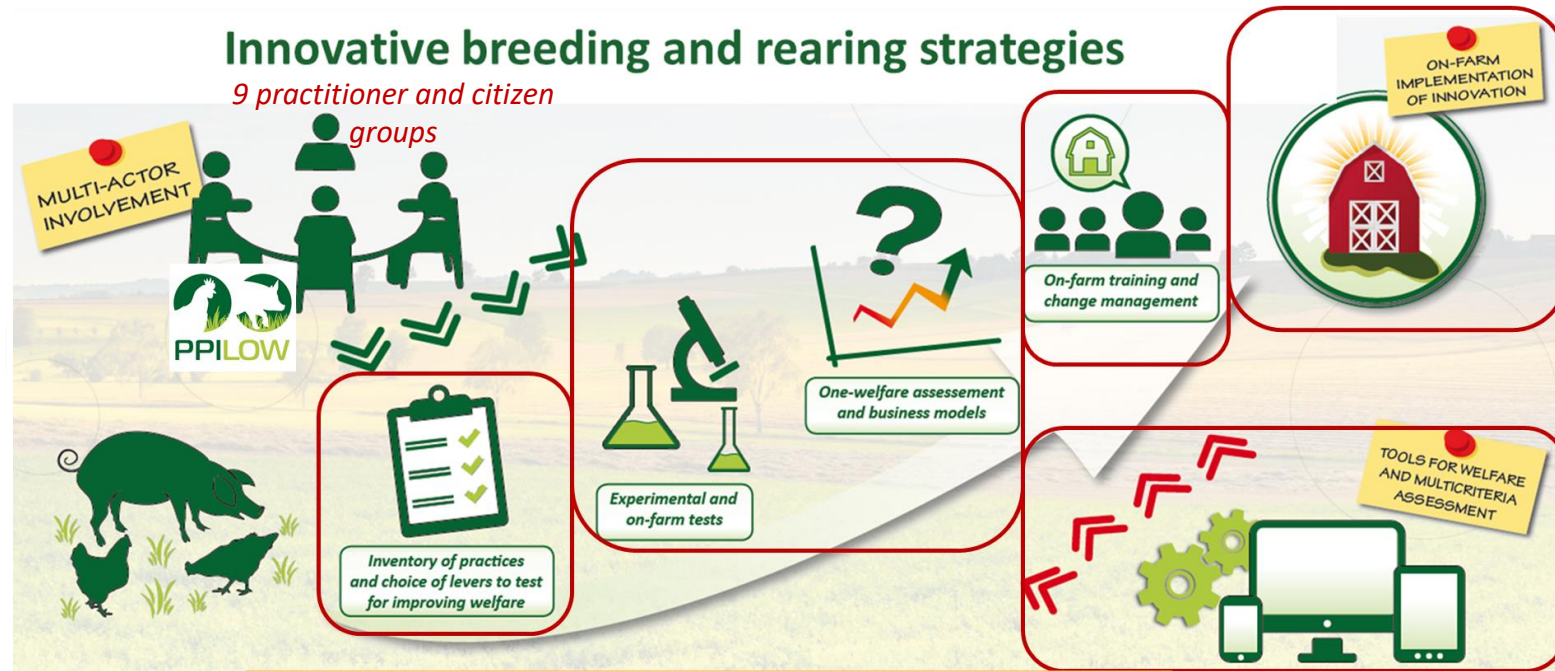
Objective : co-construct with end-users, through a multiactor approach, innovations for improving the welfare of pigs and poultry in low-input outdoor and organic farms

- Research institute
- Technical Institute
- Citizen/Practitioner Association
- SME
- University/Higher education



### Innovative breeding and rearing strategies

9 practitioner and citizen groups



*Favouring positive behaviours, improving health and robustness*  
*Avoiding piglet castration, beak trimming, the elimination of layer male chicks*

This project has received funding from the European Union's Horizon 2020 research and innovation programme under grant agreement No 816172



www.ppilow.eu

Workshop - Comment évaluer le bien être en élevage d'insectes ? 26 mai 2023, Tours

Use of plant extracts for limiting parasites in pig farms in Romania

Breeding of entire male pigs in optimized organic conditions to limit aggressiveness and boar taint of the pork meat

Use of incubation conditions and insect larvae to limit feather pecking in non beak-trimmed laying hens

Variable temperature incubation conditions or on-farm hatching to improve broiler resilience

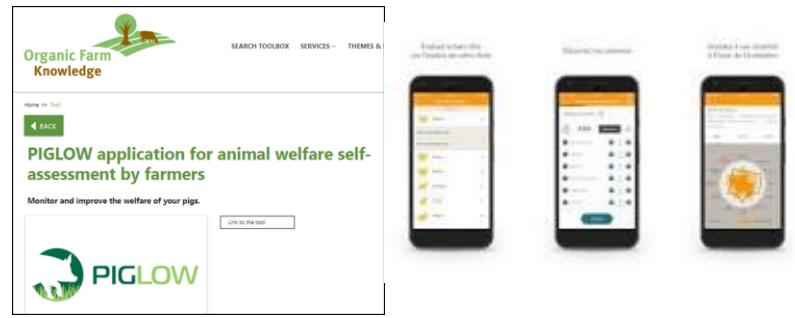
Selection on piglet survival

Design of new farrowing huts for outdoor sows with piglets

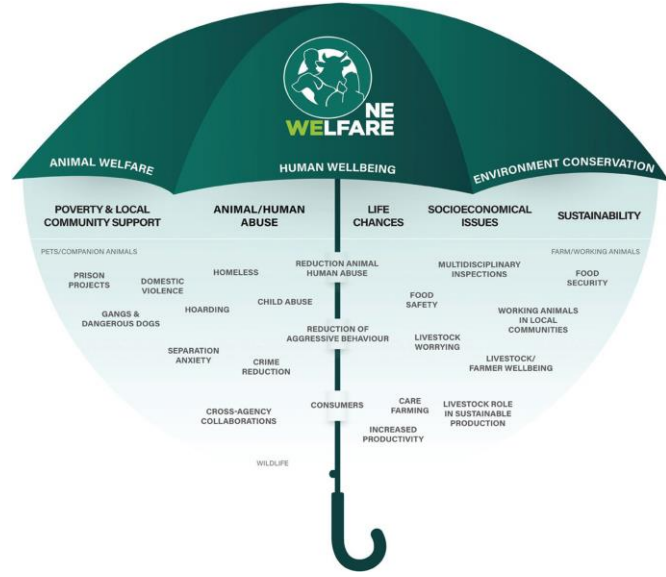
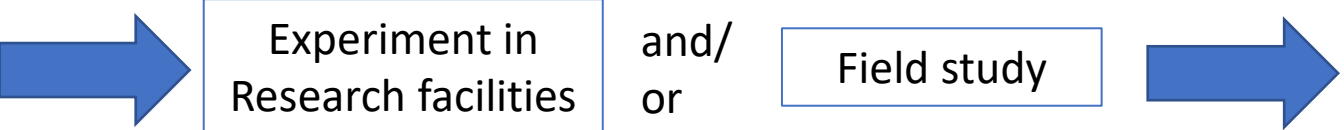
Use of dual-purpose breeds for avoiding the elimination of layer male chicks

...

*Evaluation of AW via smartphone applications developed (PIGLOW©) or extended (EBENE©) in PPILOW*



*Integrated into multicriteria analyses according to the One Welfare concept (Garcia Pinillos et al., 2016)*



One Welfare – a platform for improving human and animal welfare

**Veterinary Record, Volume: 179, Issue: 16, Pages: 412-413, First published: 22 October 2016, DOI: (10.1136/vr.i5470)**

*This project has received funding from the European Union's Horizon 2020 research and innovation programme under grant agreement No 816172*

