



HAL
open science

Consideration of uncertain forcings in the global sensitivity analysis and metamodeling of a pesticide transfer model

Katarina Radišić, Claire Lauvernet, Arthur Vidard

► **To cite this version:**

Katarina Radišić, Claire Lauvernet, Arthur Vidard. Consideration of uncertain forcings in the global sensitivity analysis and metamodeling of a pesticide transfer model. EGU General Assembly, Apr 2024, Vienna, Austria, Austria. 10.5194/egusphere-egu24-19838 . hal-04626611

HAL Id: hal-04626611

<https://hal.inrae.fr/hal-04626611>

Submitted on 27 Jun 2024

HAL is a multi-disciplinary open access archive for the deposit and dissemination of scientific research documents, whether they are published or not. The documents may come from teaching and research institutions in France or abroad, or from public or private research centers.

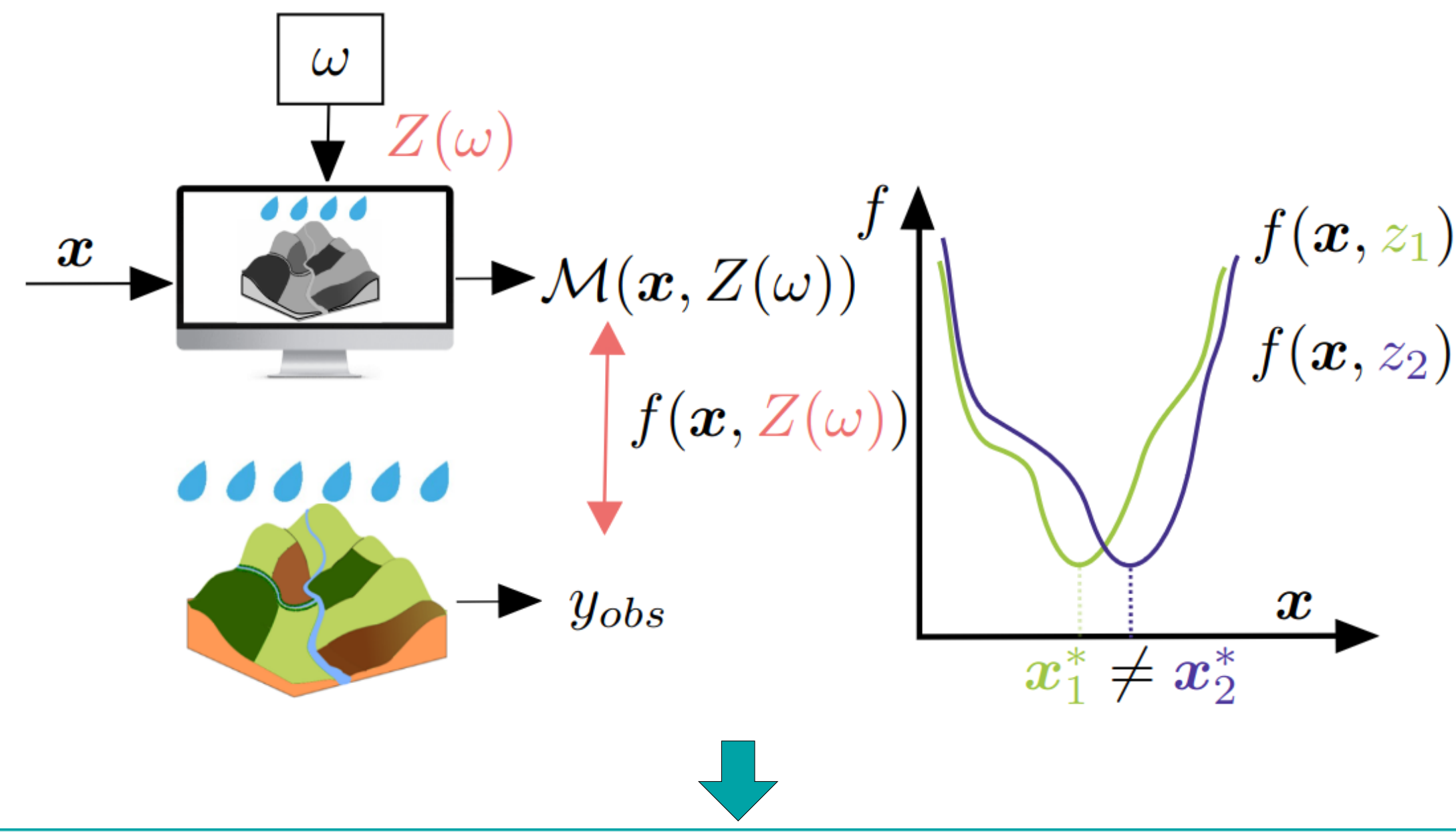
L'archive ouverte pluridisciplinaire **HAL**, est destinée au dépôt et à la diffusion de documents scientifiques de niveau recherche, publiés ou non, émanant des établissements d'enseignement et de recherche français ou étrangers, des laboratoires publics ou privés.

Uncertainty quantification in decision support for water quality

Pesticide transfer modeling at the catchment scale (e.g. [1]) simulates surface/subsurface hydrology and reactive solute transport:

- based on non linear equations
- need for a large set of spatialized parameters
- many interactive processes not (well) represented

→ **controllable model inputs:** the model parameters
→ **uncontrollable model inputs:** the forcings : rainfall / **pesticide app. dates** (typ. known within a 2/3 day range)



Uncertainty in forcings is propagated to:

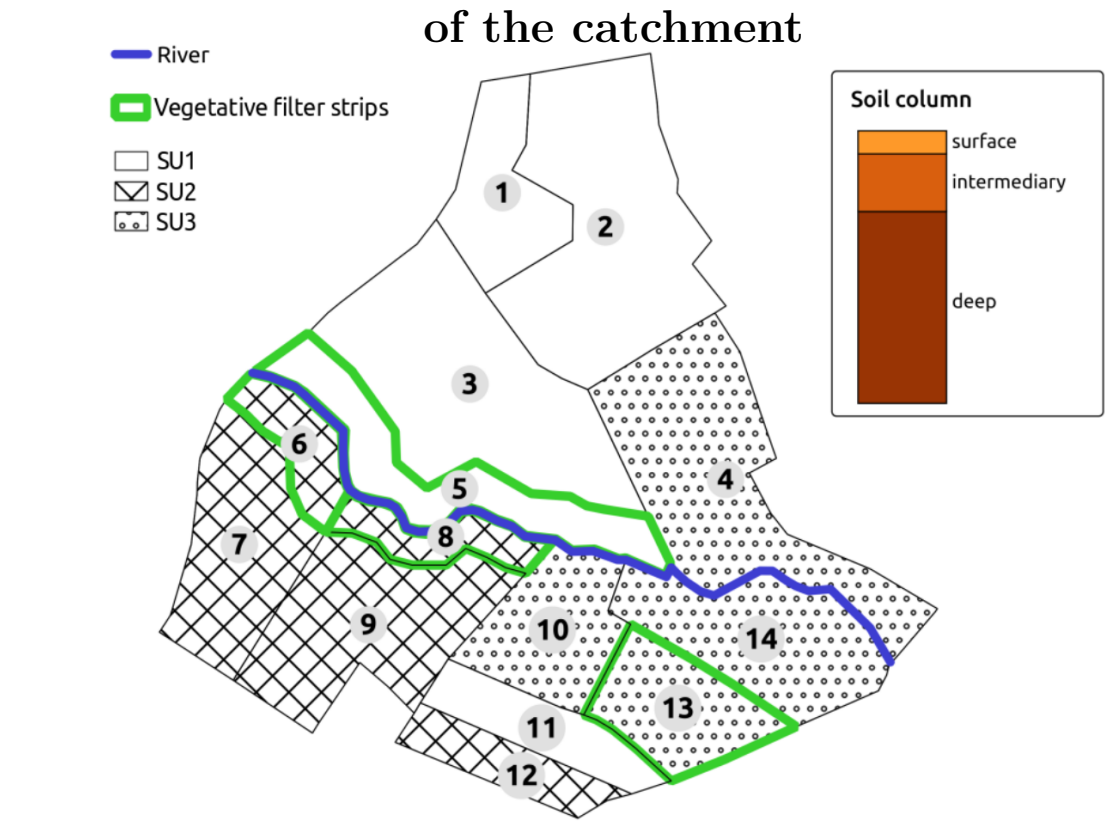
- the estimation of the model input parameters
- the **global sensitivity analysis (GSA)** of model outputs: this is generally not taken into account due to the complexity of the models [2,3] ⇒ *this study objectives*

Case study: uncertainty on the pesticide application date

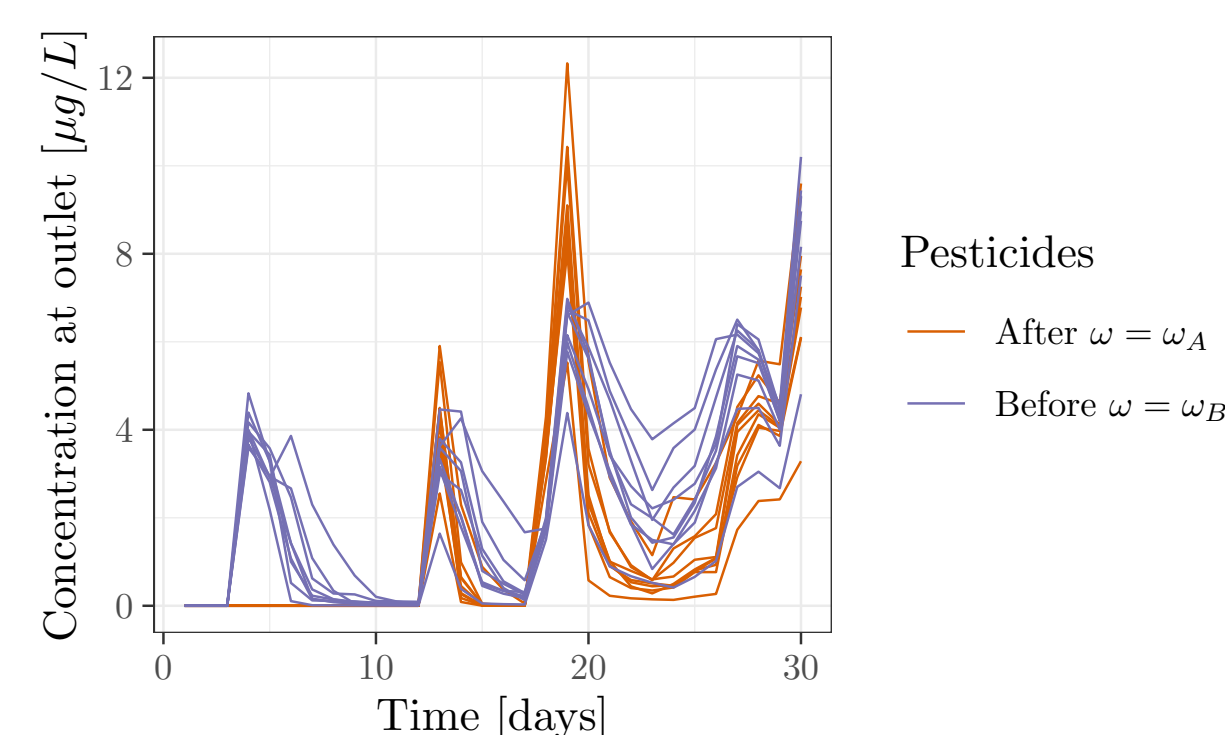
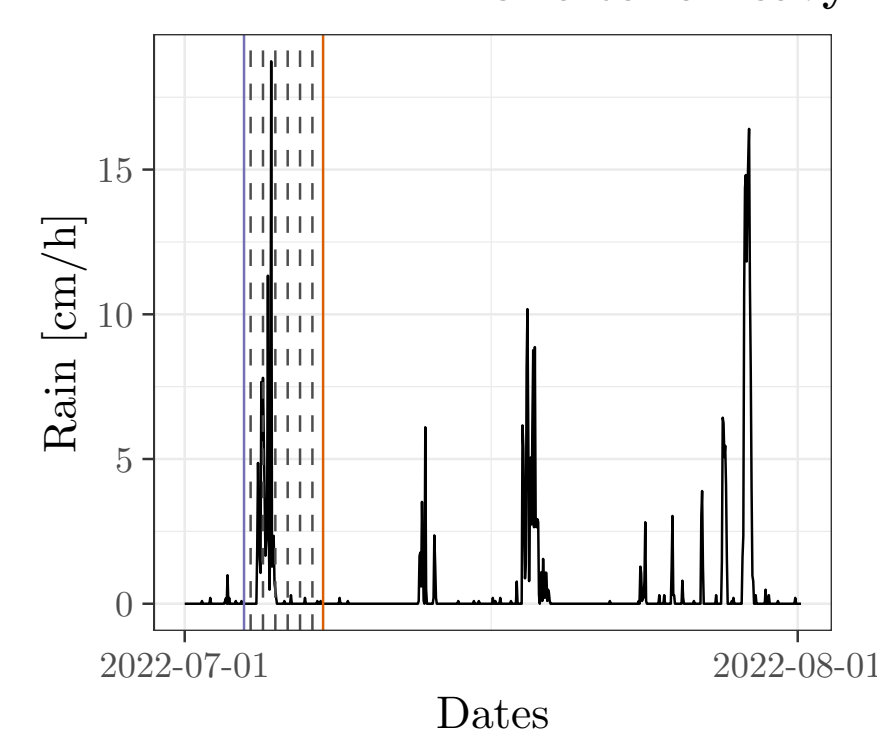


Application of pesticides on the vineyard parcels of the catchment

What if this is uncertain whether pesticide applications occurred before or after a heavy rainfall?



- ✓ pesticides are applied over a small catchment
- ✓ output var. studied: concentration at the outlet
- ✓ simulated pesticide concentrations differ w.r.t. the application date and model parameters
- ⇒ need for a 2-steps global S.A. to investigate [5-6]

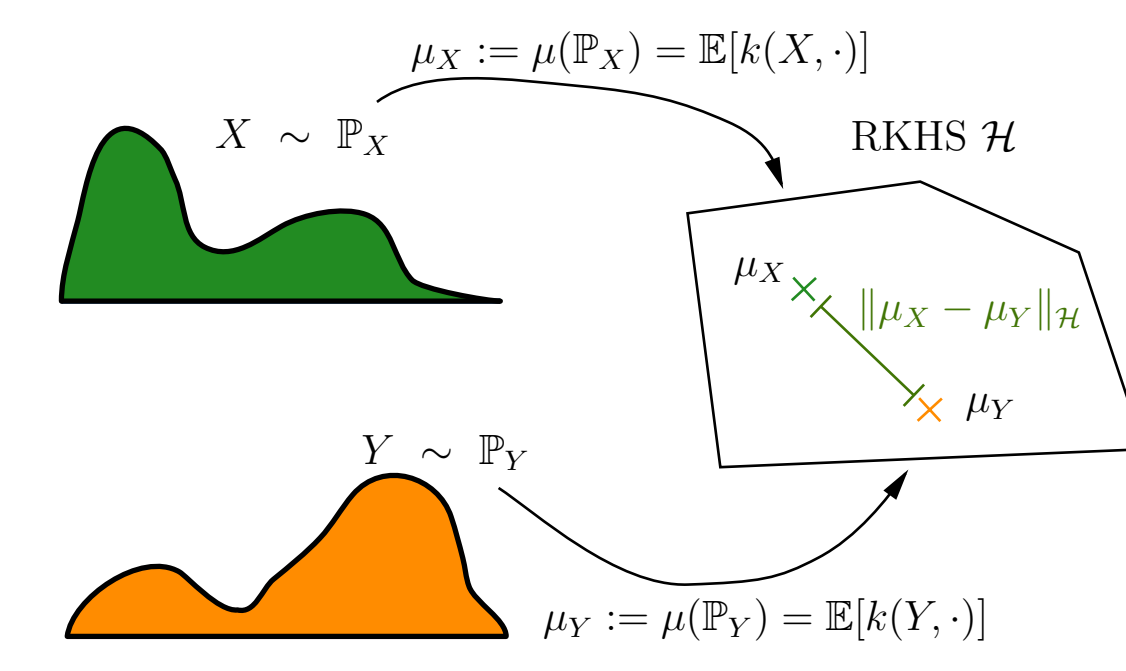


2-steps GSA

- Screening with HSIC independence test

$$H_0 : X_i \perp\!\!\!\perp Y \text{ vs. } H_1 : X_i \text{ and } Y \text{ are not independent}$$

$$p_{\text{val}_B} = \frac{1}{B} \sum_{b=1}^B \mathbb{1}_{\widehat{HSIC}^{[b]}(X_i, Y) > \widehat{HSIC}(X_i, Y)} \quad (1)$$



HSIC indices, ©Guerlain Lambert

- Sobol' indices with Polynomial Chaos Exp.

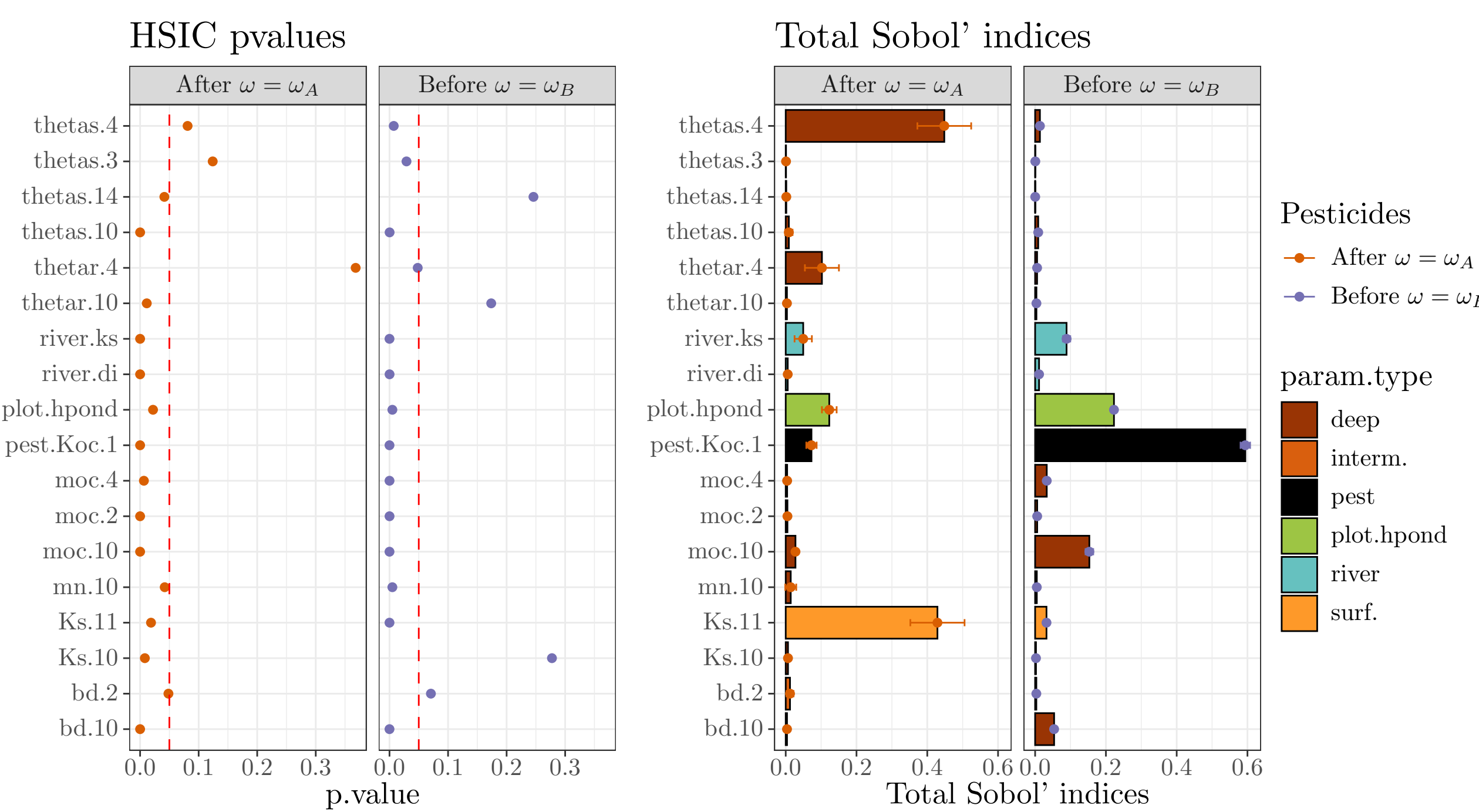
$$Y = f_d(\mathbf{X}) \approx f_{PCE}(\mathbf{X}) = \sum_{\alpha \in \mathcal{A}} c_\alpha \psi_\alpha(\mathbf{X}),$$

$$\hat{S}_i = \frac{\sum_{\alpha \in \mathcal{A}_i} c_\alpha^2 / \hat{D}}{\hat{D}}, \quad \mathcal{A}_i = \{\alpha \in \mathcal{A} : \alpha_i > 0, \alpha_{j \neq i} = 0\},$$

$$\hat{S}_{T_i} = \frac{\sum_{\alpha \in \mathcal{A}_{T_i}} c_\alpha^2 / \hat{D}}{\hat{D}}, \quad \mathcal{A}_{T_i} = \{\alpha \in \mathcal{A} : \alpha_i > 0\},$$

$$\hat{D} = \text{Var} \left[\sum_{\alpha \in \mathcal{A}} c_\alpha \psi_\alpha(\mathbf{X}) \right] = \sum_{\alpha \neq \{0\}} c_\alpha^2 \quad (2)$$

Sensitivity in two contrasting scenarios

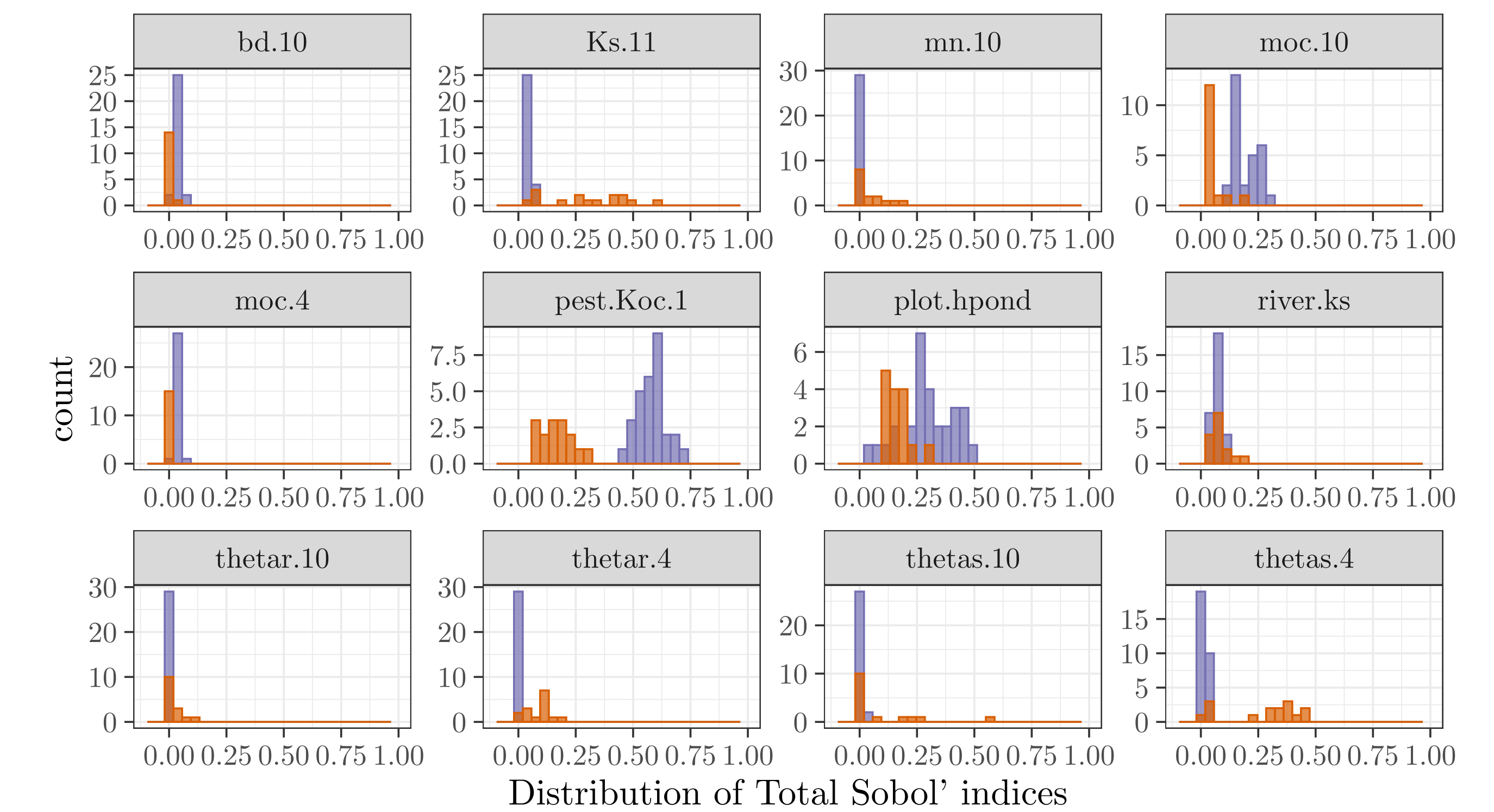


- The HSIC identifies 28 influential parameters on 150
- The Sobol' indices for the 28 parameters are calculated
- **GSA results are different in the two cases**
- what about the application dates between ω_A and ω_B ?

References

[1] Rouzies et al., 2019. 10.1016/j.scitotenv.2019.03.060 [2] Gatel, L. et al., 2019. 10.3390/w12010121 [3] Rouzies et al., 2022. 10.5194/egusphere-egu22-10384 [4] Sudret et al., 2008 10.1016/j.res.2007.04.002 [5] Gretton et al., 2005 10.5555/1046920.1194914 [6] Lüthen et al., 2023 10.1016/j.cma.2022.115875

A more global approach: Sobol' indices as random variables

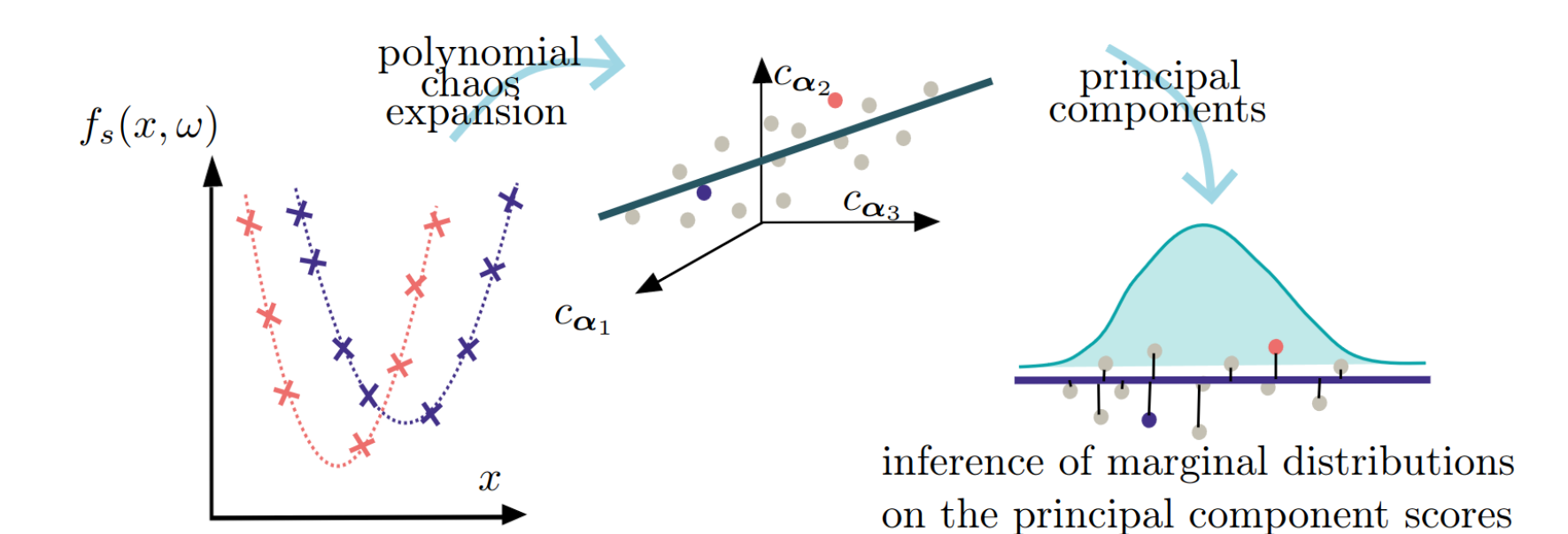


Application Before and during rain After rain

- ✓ Sobol' indices are seen as random variables,
- ✓ Sobol' indices represented as histograms (depending on the application date)
- ✓ the sensitivity of the output on the pest.Koc.1 (pesticide mobility) and others par. differs visibly w.r.t. the application moment

Conclusion / Next steps

- The GSA results lead to contrasting conclusions depending on the uncertain pesticide application date
- Considering Sobol' indices as random variables reveals a difference in the influence of some input factors (pest.mobility Koc, θ_s , K_s of some horizons, hpond, etc.) on the concentration at the outlet.
- Next step : building a **stochastic metamodel** of PESHMELBA by inferring the distributions of the PCE coefficients [6]:



BUT: in our case complex nonlinear interactions between determ. and stochastic inputs ⇒ other methods are tested for inferring distrib. of the coeff. such as KDE, GMM, Principal Curve Analysis in 3D on the PCs

