



HAL
open science

Effect of thermal manipulation of slower-growing broiler chickens on chick quality and physiology

Roos Molenaar, Anne Collin, T. Bas Rodenburg, M. Reichelt, Ilona van den Anker, Bas Kemp, Henry van den Brand

► To cite this version:

Roos Molenaar, Anne Collin, T. Bas Rodenburg, M. Reichelt, Ilona van den Anker, et al.. Effect of thermal manipulation of slower-growing broiler chickens on chick quality and physiology. XVI. European Poultry Conference, WPSA, Jun 2024, Valencia (Espagne), Spain. hal-04669786

HAL Id: hal-04669786

<https://hal.inrae.fr/hal-04669786v1>

Submitted on 9 Aug 2024

HAL is a multi-disciplinary open access archive for the deposit and dissemination of scientific research documents, whether they are published or not. The documents may come from teaching and research institutions in France or abroad, or from public or private research centers.

L'archive ouverte pluridisciplinaire **HAL**, est destinée au dépôt et à la diffusion de documents scientifiques de niveau recherche, publiés ou non, émanant des établissements d'enseignement et de recherche français ou étrangers, des laboratoires publics ou privés.



Distributed under a Creative Commons Attribution - NonCommercial 4.0 International License

Poultry and Pig Low-input and Organic production systems' Welfare



Effect of thermal manipulation of slower-growing broiler chickens on chick quality and physiology

June 25, 2024

Roos Molenaar

A. Collin, T. B. Rodenburg, M. Reichelt, I. van den Anker, B. Kemp, H. van den Brand



This project has received funding from the European Union's Horizon 2020 research and innovation programme under grant agreement No 816172



1

Why thermal manipulation during incubation?

- **Thermal manipulation** = Increase or decrease of incubation temperature during certain embryonic periods
- Epigenetics = Thermal programming possible
 - Improved resistance to temperature/pathogens in later life
- BUT also + or - effects possible on:
 - Survival & Chick quality
 - Skin development
 - High temp increased # blood vessels and diameter

What is the effect of thermal manipulation on chick quality and skin development of slower-growing broilers?



This project has received funding from the European Union's Horizon 2020 research and innovation programme under grant agreement No 816172

2

Experimental design

3 eggshell temperature treatments

1. Control (C):

Constant eggshell temperature of 37.8°C

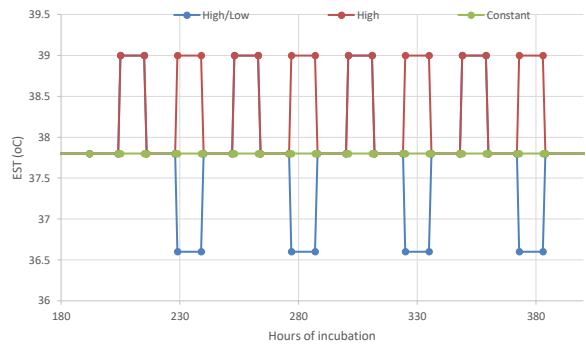
Thermal treatment (TM): from embryonic day 9-16 temperature changed every 12 h

2. High/Low (HL)

37.8°C – 38.9°C – 37.8°C – 36.7°C

3. High (H)

37.8°C – 38.9°C



3



3

Several measurements

Heat production

Chick quality

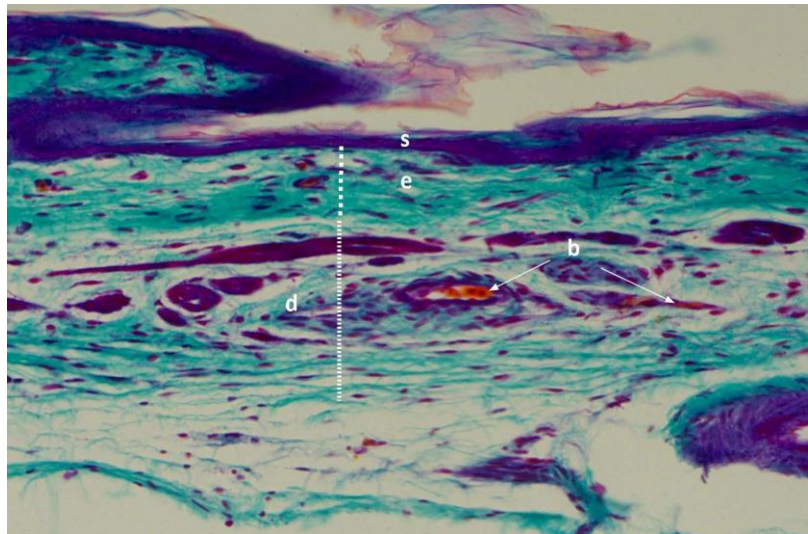
Skin development

Thickness of
 s = stratum corneae
 e = epidermis
 d = dermis

Number/Perimeter
 b = blood vessel

Blood parameters

Bursa of Fabricius morphology

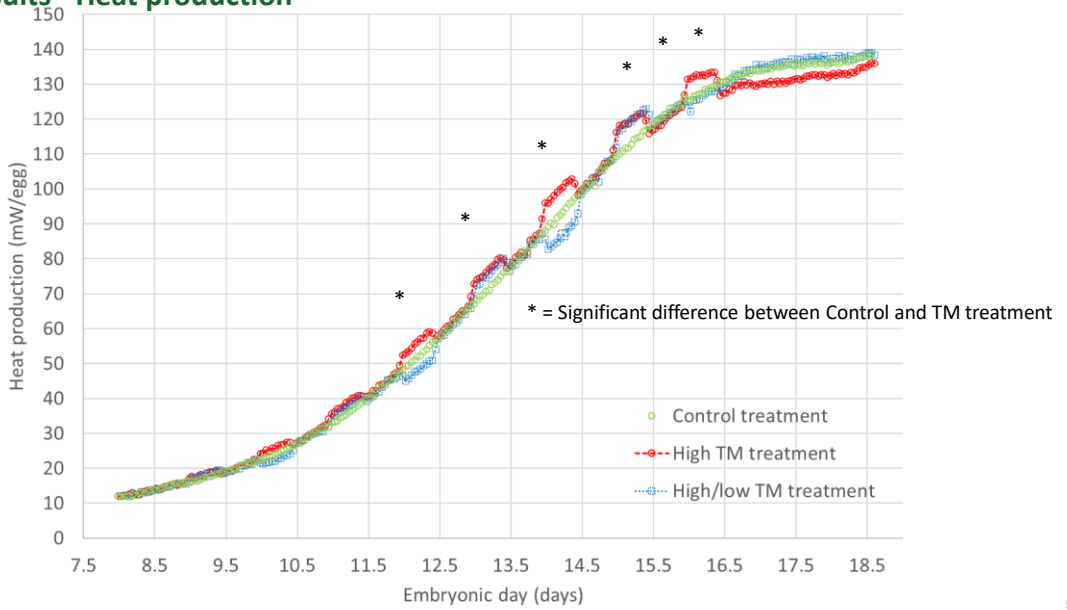


4



4

Results - Heat production

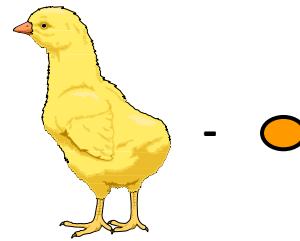


5

Study 1 – Results - Chick quality

Parameter	Control	High	High/Low	SEM	P-value
Hatch time (hrs)	498	493	497	2	0.44
Body weight (g)	40.8	40.7	40.8	0.18	0.95
YFBM (g)	36.4	35.9	36.3	0.21	0.42
Residual yolk (g)	4.50	4.80	4.52	0.13	0.32
Heart (% of YFBM)	0.77	0.70	0.75	0.03	0.34
n	52	54	59		

Yolk-free body mass
Body weight minus Residual yolk weight



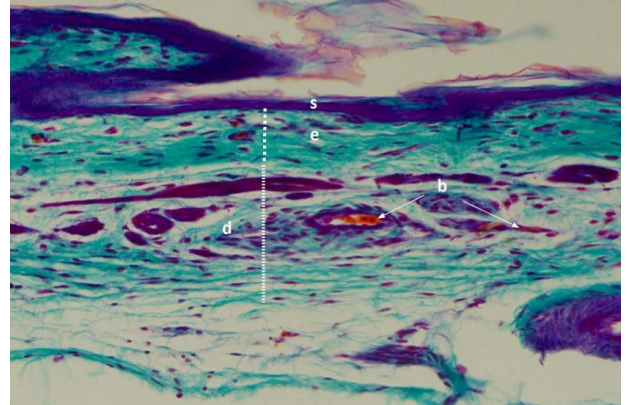
No difference in chick quality between treatment groups



6

Results - Skin development

Parameter	Control	High	High/ Low	SEM	P-value treatment
Skin					
Str corneum (μm)	10	10	9	0.7	0.88
Epidermis (μm)	35	38	39	2.6	0.58
Dermis (μm)	74	75	85	7.1	0.57
Blood vessel ratio	9.0	8.6	8.9	0.54	0.91
Vessel perim (μm)	18	17	18	2.2	0.94
n	13	11	13		



No difference in skin development between treatment groups

7

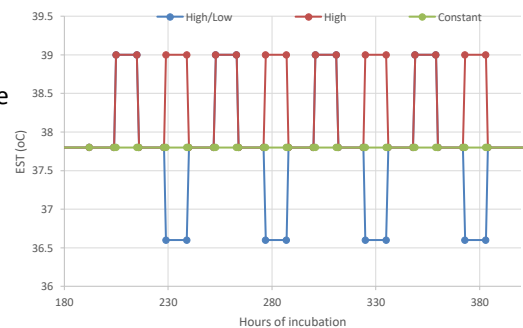


7

Conclusion Thermal Manipulation (TM) in slower-growing broiler chickens

Early life consequences of TM

- Heat production was instantly affected by TM
 - Metabolic rate affected
- No effect of TM treatment on chick quality or skin development @ hatch
 - No negative effects found
 - No physiological / adaptive capacity adjustments?
- Follow-up research to assess effectiveness of TM in later life
 - Fine tuning of amplitude, timing and frequency



8

PPILOW PARTNERS



Contact: roos.molenaar@wur.nl

www.ppilow.eu

9



This project has received funding from the European Union's Horizon 2020 research and innovation programme under grant agreement No 816172

