



HAL
open science

Design of a new model yeast consortium for ecological studies of enological fermentation

Eléonore Pourcelot, Audrey Vigna, Thérèse Marlin, Virginie Galeote,
Thibault Nidelet

► To cite this version:

Eléonore Pourcelot, Audrey Vigna, Thérèse Marlin, Virginie Galeote, Thibault Nidelet. Design of a new model yeast consortium for ecological studies of enological fermentation. *Peer Community Journal*, 2024, 5, pp.e5. 10.1101/2024.05.06.592697. hal-04710975

HAL Id: hal-04710975

<https://hal.inrae.fr/hal-04710975v1>

Submitted on 10 Jan 2025

HAL is a multi-disciplinary open access archive for the deposit and dissemination of scientific research documents, whether they are published or not. The documents may come from teaching and research institutions in France or abroad, or from public or private research centers.

L'archive ouverte pluridisciplinaire **HAL**, est destinée au dépôt et à la diffusion de documents scientifiques de niveau recherche, publiés ou non, émanant des établissements d'enseignement et de recherche français ou étrangers, des laboratoires publics ou privés.



Distributed under a Creative Commons Attribution - NonCommercial 4.0 International License

Research article

Published
2025-01-07

Cite as

Eléonore Pourcelot, Audrey Vigna, Thérèse Marlin, Virginie Galeote and Thibault Nidelet (2025) *Design of a new model yeast consortium for ecological studies of enological fermentation*, Peer Community Journal, 5: e5.

Correspondence

thibault.nidelet@inrae.fr

Peer-review

Peer reviewed and recommended by PCI Microbiology,

<https://doi.org/10.24072/pci.microbiol.100118>



This article is licensed under the Creative Commons Attribution 4.0 License.

Design of a new model yeast consortium for ecological studies of enological fermentation

Eléonore Pourcelot¹, Audrey Vigna¹, Thérèse Marlin¹, Virginie Galeote¹, and Thibault Nidelet¹

Volume 5 (2025), article e5

<https://doi.org/10.24072/pcjournal.500>

Abstract

Wine fermentation involves complex microbial communities of non-*Saccharomyces* yeast species besides the well-known *Saccharomyces cerevisiae*. While extensive research has enhanced our understanding of *S. cerevisiae*, the development of multi-species fermentation starters has led to increased interest in yeast interactions and the role of microbial diversity in winemaking. Consequently, molecular methods have emerged to identify the different species at different stages of the winemaking process. Model microbial communities or consortia, which provide simplified systems resembling natural microbial diversity, offer opportunities to investigate population dynamics and understand the role of community diversity in ecosystem performance. Here, this work aims to design a yeast consortium reflecting the diversity of wine yeasts and to develop a method for accurately tracking their population dynamics during fermentation. We developed and characterized a six-species consortium, with *S. cerevisiae*, *Hanseniaspora uvarum*, *Starmarella bacillaris*, *Metschnikowia pulcherrima*, *Lachancea thermotolerans* and *Torulaspota delbrueckii*. By tagging each yeast species with distinct fluorescent markers, the study enables real-time monitoring of individual species within the consortium using flow cytometry. We have carried out a complete analysis of this consortium, studying the evolution of populations over time and examining factors such as metabolite production and fermentation kinetics. In addition, the yeast consortium was used to test the diversity-function relationship as a proof of concept. We sought to determine the impact of the initial evenness on communities' performances subjected to osmotic stress. To this end, ten randomly designed consortia with varying initial species proportions were followed in enological fermentation with 200 and 280 g/L of initial sugars. The initial proportion of certain species affected the population dynamics and metabolite production however no demonstrable effect of the initial evenness on the response to osmotic stress was shown. These results demonstrated the usefulness of the presented consortium, which is now available to the scientific community and can contribute to future work trying to decipher multispecies dynamics and the role of yeast diversity in wine fermentation.

¹SPO, Univ Montpellier, INRAE, Institut Agro – Montpellier, France



Introduction

Fermented foods and beverages are consumed worldwide, and their production relies on diversified microbial communities that include numerous bacteria and yeasts (Furukawa et al., 2013; Wolfe & Dutton, 2015; Tamang et al., 2016). Wine alcoholic fermentation involves different yeast species from the *Saccharomyces*, *Hanseniaspora*, *Pichia*, *Metschnikowia*, *Starmerella*, *Torulaspota*, *Lachancea*, or *Rhodotorula* genera (Barata et al., 2012; Drumonde-Neves et al., 2021). Research has mainly been focused on optimizing the process with *Saccharomyces cerevisiae* as it is the main species carrying out the alcoholic fermentation. Thus extensive knowledge has been provided on *S. cerevisiae* growth, and its influence on wine aroma as well as the genetic basis of its suitability for fermentation (Lambrechts & Pretorius, 2000; Sablayrolles, 2009; Peter et al., 2018). However, the development of multispecies starters, with one or two non-*Saccharomyces* strains alongside *S. cerevisiae* (Roudil et al., 2020), has spurred research on interactions between yeast species and on the role of wine microbial diversity in the process (Ivey et al., 2013; Ciani & Comitini, 2015; Bordet et al., 2020).

Consequently, an increasing number of studies on wine microbial ecology, ranging from investigation on the factors influencing yeast and bacterial diversity in grape must, such as climate and vine management (Bokulich et al., 2014; Bagheri et al., 2016; Grangeteau et al., 2017), to the mechanisms of interactions involved between the different species (Bordet et al., 2020). Studies on population dynamics have highlighted mechanisms of competition for nutrient, secretion of toxic compounds or involvement of cellular contact (Holm Hansen et al., 2001; Medina et al., 2012; Kemsawasd et al., 2015). Molecular mechanisms and phenotypic changes caused by interactions have also been studied through transcriptomic analysis or description of physical interactions of cell wall proteins (Brückner et al., 2020; Mencher et al., 2021; Conacher et al., 2022). In addition, interactions and population dynamics of yeasts can be modulated by environmental conditions, such as the different stress factors they encounter during winemaking. Indeed, across the alcoholic fermentation yeasts are exposed to harsh conditions, encompassing low pH, low oxygen availability, or high sugar content (Heard & Fleet, 1988; Bauer & Pretorius, 2000; Varela et al., 2021). The varied environmental conditions and complex microbiota involved in fermentation makes it difficult to draw conclusion.

Synthetic communities that simplified complex ecosystems, like soil and gut microbiota or food products, allow to disentangle biotic and abiotic factors influencing community dynamics and functioning (De Roy et al., 2014; Blasche et al., 2017; Vrancken et al., 2019). Therefore they have been used to explore complex ecological questions. Synthetic communities can be composed of natural isolates that naturally coexist (Venturelli et al., 2018; Kehe et al., 2019; Alekseeva et al., 2021). They can be composed of microorganisms that are engineered to realize complex biotechnological processes (Shong et al., 2012; Minty et al., 2013) or investigate interactions through crossfeeding induced by auxotrophies (Mee et al., 2014; Giri et al., 2021), and can also include genetic modification allowing to identify and follow species in mixtures (Dunham, 2007; Kylilis et al., 2018). Model communities from fermented food, especially wine, have recently become a new model to investigate yeast-yeast and yeast-bacteria interactions in multispecies context (Ponomarova & Patil, 2015; Calabrese et al., 2022; Lax & Gore, 2023). In addition, understanding ecological principles in fermented food and beverages may prove useful to help steer the process and obtain predictable results (Louw et al., 2023). Previous research on microbial communities have shown that higher initial community evenness, namely even initial species abundance, can improve stable functionality or resistance to invasion when submitted to environmental stress (Wittebolle et al., 2009; De Roy et al., 2013). For the winemaking yeast community, (Ruiz et al., 2023) recently tested the relationship between richness (number of species) and fermentation process. However, despite works on different inoculation ratio at the beginning of fermentation (Comitini et al., 2011; Morales et al., 2015), the absence of fine monitoring of microbial dynamics during fermentation leaves many shadow areas about the initial evenness impacts alcoholic fermentation for wine.

While traditional numbering methods like differential cultures, qPCR, and metabarcoding are valuable tools for studying microbial communities, they often suffer from limitations in terms of time, labor, and the ability to provide real-time data. Flow cytometry, on the other hand, offers a rapid and accurate method for monitoring population dynamics in multispecies communities, as demonstrated in recent

studies (Rigottier-Gois et al., 2003; Kylilis et al., 2018) and model wine yeast pairwise cocultures and consortia (Longin et al., 2017; Conacher et al., 2020).

The present study aimed to develop a novel six-species consortium representative of wine yeast diversity as well as the method to discriminate its different species population. This consortium consisted of one strain of six different species, modified with a specific fluorescent tag, at different initial abundance. We also verified our ability to accurately measure species proportions in complex mixtures with mock communities and finally used this novel model consortium to test the diversity-function relationship as a proof of concept.

Material and methods

Strains and media

In this study, six wine yeasts species were used: *Hanseniaspora uvarum*, *Lachancea thermotolerans*, *Metschnikowia pulcherrima*, *Saccharomyces cerevisiae*, *Starmerella bacillaris*, and *Torulasporea delbrueckii*. The different wild type strains are wild isolates from natural grape must from Southern France and the transformant genotypes are indicated in Table 1. Strains were kept at -80°C in yeast peptone dextrose YPD (1% yeast extract, 2% bactopectone, 2% glucose) supplemented with 20% of glycerol before being streaked on YPD agar and incubated at 28°C. *Escherichia coli* DH5α bacteria (New England Biolabs), used for plasmid constructions, were grown on LB medium (1% tryptone, 0,5% yeast extract, 0,5% NaCl) supplemented with 100 µg/mL of ampicillin antibiotic (Sigma A9817). For solid media preparation, agar was added to the media at 2 %.

Table 1: List of yeast strains used in this study.

Species	Strain name	Parental strain	Code	Genotype*	Provider/Reference**
<i>S. cerevisiae</i>	MTF 4798	MTF1152		<i>TDH3-mCherry-kanMX</i>	This study
<i>S. cerevisiae</i>	CLIB 3930	MTF 4798	Sc	<i>TDH3-mCherry-kanMX ENO2-GFP-natMX4</i>	This study
<i>H. uvarum</i>	CLIB 3118	-			CIRM Levures
<i>H. uvarum</i>	CLIB 3929	CLIB 3118	Hu	<i>TDH3-BFP2-kanMX</i>	This study
<i>L. thermotolerans</i>	MTF 5257	-			SPO lab
<i>L. thermotolerans</i>	CLIB 3932	MTF 5257	Lt	<i>KLTH0G15730g-mCherry-natMX4</i>	This study
<i>M. pulcherrima</i>	CLIB 3329	-	Mp		CIRM Levures
<i>S. bacillaris</i>	CLIB 3147	-			CIRM Levures
<i>S. bacillaris</i>	CLIB 3933	CLIB 3933	Sb	<i>TDH3-eGFP-hphMX6</i>	This study
<i>T. delbrueckii</i>	CLIB 3152	-			CIRM Levures
<i>T. delbrueckii</i>	CLIB 3931	CLIB 3931	Td	<i>TDEL0E04750-mCitrine-natMX4</i>	This study

*Due to lack of information as of writing time, *TDH3* name was used for non-*Saccharomyces* to indicate the closest homologous orthologues to *S. cerevisiae* S288C *TDH3* gene sequence when no gene code was available. ****CIRM**: Center for Microbial Resources dedicated to Yeast, CIRM-Levures, SPO, Univ Montpellier, INRAE, MontpellierSupAgro, 2 place Pierre Viala – 34 060 Montpellier Cedex 02 France

SPO lab: Sciences Pour l’Oenologie Univ Montpellier, INRAE, MontpellierSupAgro, 2 place Pierre Viala - 34 060 Montpellier Cedex 02 France

Fluorescent strains construction

Plasmid construction

The following plasmids were constructed by Gibson assembly (Gibson et al., 2009): pFA6a-link-yEmCitrine-NATMX, pFA6a-link-yomCherry-NATMX, pFA6-TDH3.1kb.Td-mCitrine-NATMX, pFA6-Hu1kb-BFP2-KAN. Gibson assembly were done using the NEB Builder HiFi DNA Assembly Master Mix (New England Biolabs) and transformed into *E. coli* DH5α (New England Biolabs) following the manufacturer instructions. pFA6 plasmid backbone, antibiotic resistance cassettes (KanMX, hphMX) and fluorescent protein genes (EGFP, mCherry, mCitrine, mTagBFP2) were obtained from plasmids ordered from AddGene (#44900, #44899, #44645, #44903, Supplementary Table 1, (Sheff & Thorn, 2004; Lee et al., 2013)). Primers used for the amplification of fragments used for the assembly are listed in Supplementary Table 2. Where necessary,

homologous sequences of approximately 1kb were amplified from the target species (*T. delbruecki* CLIB3069, *H. uvarum* CLIB3221, *S. bacillaris* CLIB3147). All plasmids were checked by enzymatic digestion (New England Biolabs). Plasmid DNA was extracted from 3 mL of overnight *E. coli* LB (with 100 µg/mL of ampicillin) culture with the NucleoSpin Plasmid extraction kit (Macherey Nagel, Düren, Germany) according to manufacturer instructions.

Yeast genetic modification

Genes coding for fluorescent proteins were integrated into the genome in fusion of *TDH3* (glyceraldehyde-3-phosphate dehydrogenase) gene (or its orthologue in non-*Saccharomyces* strains). Cassettes used for transformation were amplified from plasmid matrices listed in Supplementary Table 1 with a high fidelity enzyme, either the KAPA HiFi kit (Cape Town, South Africa) or Phusion High-Fidelity DNA polymerase (Thermo Fisher Scientific, Vilnius, Lithuania), using primers specific to each species, as listed in Supplementary Table 3. PCR amplification products were purified with the PCR clean-up Kit (Macherey Nagel, Düren, Germany, REF 740609). In addition, *S. cerevisiae* MTF4798 was tagged with a second fluorescent protein, in fusion of *ENO2* (enolase II), another gene involved in glycolysis. *TDH3* has a strong promoter and is expressed continuously during fermentation in *S. cerevisiae*. Similarly, *ENO2* is also expressed throughout *S. cerevisiae* fermentation, even though to a lesser extent (Puig & Pérez-Ortín, 2000; Peng et al., 2015). Yeast transformation was carried out by electroporation, as described by Pourcelot et al. (2023). Transformants were selected on YPD agar supplemented with the appropriate antibiotic: 800 µg/mL of hygromycin B for *S. bacillaris*, 100 µg/mL of nourseothricin for *S. cerevisiae*, *T. delbrueckii*, and *L. thermotolerans*, and 200 µg/mL of geneticin for *H. uvarum* and *S. cerevisiae*. Integration at the locus was verified with two independent PCR (Supplementary Table 4) performed on at least 8 clones. To check that transformation did not modify cells behavior, growth of wild type strains and two transformants were compared by microplate assay (Supplementary Figure 1).

Fermentations

Synthetic must

Synthetic grape must was prepared according to (Bely et al., 1990) with 425 mg/L of yeast assimilable nitrogen (as a mixture of amino-acids and ammonium), supplemented with 5 mg/L of phytosterols (Beta-sitosterol, Sigma, St-Louis, US, MO) and a final pH of 3.3. Total sugar concentration was either 200 g/L (S200, with 100 g/L of glucose and 100 g/L of fructose), or 280 g/L (S280, with 140 g/L of glucose and 140 g/L of fructose). Synthetic must was pasteurized at 100°C for 15 min before use.

Cell inoculation

Cell cultures were prepared with a first propagation in 5 mL YPD for 18 hours at 28°C, and a second propagation of 1 mL in 50 mL of synthetic must S200 for 24 hours at 28°C with agitation. Cell concentration of each pre-culture was measured by flow cytometry before inoculation. Appropriate cell culture volume was used to start fermentation with a final cell concentration of 10⁶ cells/mL. In the case of consortia, the volume of different species cultures were pooled to obtain the desired initial abundance (Table 2). Cell suspensions were centrifuged at 4415 g for 5 min and washed in saline solution (9 g/L of sodium chloride, Sigma), and suspended in 5 mL of synthetic must for inoculation (either S200 or S280).

Scale of fermentation

Fermentations of the 6-species consortium (Co) and monocultures were carried out in 1 L fermenters to allow a higher degree of precision in consortium characterisation. Due to the greater number of fermenters needed to test the function-diversity relationship, the 5-species consortia were carried out in 250 mL fermenters. One liter fermentation were run in 1.2 L fermenters (200mL headspace) with automated weighing every 20 min to evaluate CO₂ weight loss. Fermenters filled with 1 L of synthetic grape must were aerated for 40 min before inoculation. An internally developed software was used to measure in real time the rate of CO₂ production (g/L/h) and fermentations were stopped when it was lower than < 0.02 g/L/h, or after 312 hours if fermentation had not finished yet. At 0, 4, 6, 12, 24, 48, 72, 168 hours of fermentation and when fermentation stopped or after 312 hours, 6 mL were sampled for population and metabolite analysis.

Two-hundred and fifty mL fermentations were run in 300 mL fermenters with manual weighing twice to thrice a day. Fermenters were aerated for 20 min before inoculation. At the start and end of fermentation, 5 mL were sampled for both population and metabolite analysis. At 21, 45, 120, 168, 210, 290 h, 1.5 mL were sampled for population analysis only.

Inoculation and consortia composition

Precultures of each strain were done by inoculating 5 mL of YPD with colony grown on a YPD agar plate and incubated for 18 hours at 28°C. One milliliter of the preculture was then propagated in 50 mL in synthetic must S200 in 125 mL Erlenmeyer flasks and incubated for 24 hours at 24 °C with shaking (250 rpm). Volume of cell culture of each species was calculated after measuring cell concentration of each strain culture by flow cytometry. Consortia were made by mixing the adequate volume of each species in individual 50 mL Falcon tubes for each fermenter. The cell mixes were centrifuged for 5 min at 4415 g and the cell pellet was rinsed in physiological water once (NaCl at 9 g/L) then thoroughly resuspended in 5 mL of synthetic must (S200 or S280 accordingly). Fermenters were inoculated at a total 10^6 cell/mL rate with this final cell suspension.

Composition of the different consortia used in this study can be found in Table 2. The 6-species consortia (Co) had the following initial proportions of the six species were: 35% *H. uvarum* ($3.5 \cdot 10^5$ cells/mL), 25% *M. pulcherrima* ($2.5 \cdot 10^5$ cells/mL), 20% *S. bacillaris* ($2 \cdot 10^5$ cells/mL), 10% *S. cerevisiae* ($1 \cdot 10^5$ cells/mL), 5% *T. delbrueckii* ($0.5 \cdot 10^5$ cells/mL), 5% *L. thermotolerans* ($0.5 \cdot 10^5$ cells/mL). The consortia used for testing the diversity-functionality relationship included eleven consortia with the five fluorescent species (noted C02 to C12). These consortia had varying initial relative abundance of the five different species (except for *S. cerevisiae* which had an initial abundance of 5% in C02 to C11, and 15 % in C12) encompassing different levels of evenness (Table 2). Diversity was evaluated with the Shannon index with the following formula: $-\sum^n p_i \ln(p_i)$ where p_i is the relative abundance of species i , and n the number of species. C12 composition is adapted from the 6-species consortium but without *M. pulcherrima*. Two consortia consisting of equal initial abundance for all species, with *S. cerevisiae* (C07) or without (C13), as well as a control monoculture with *S. cerevisiae* alone (noted C01) were also included.

Table 2: Composition (in %) and diversity index of the different consortia tested in this study. Hu: *Hanseniaspora uvarum*, Lt: *Lachancea thermotolerans*, Mp: *Metschnikowia pulcherrima*, Sb: *Starmerella bacillaris*, Sc: *Saccharomyces cerevisiae*, Td: *Torulaspora delbrueckii*.

Consortium	Sc	Hu	Sb	Lt	Td	Mp	Shannon index
<i>6 species</i>							
Co	10	35	20	5	5	25	
<i>5 species</i>							
C01	100	0	0	0	0		0.000
C02	5	75	5	10	5		0.895
C03	5	5	15	5	70		0.983
C04	5	25	60	5	5		1.102
C05	5	5	50	35	5		1.163
C06	5	30	5	10	50		1.237
C07	5	23.75	23.75	23.75	23.75		1.515
C08	5	25	50	15	5		1.277
C09	5	5	45	20	25		1.327
C10	5	45	25	10	15		1.370
C11	5	25	30	30	10		1.449
C12	15	40	25	10	10		1.458
C13	0	25	25	25	25		1.386

Cell numbering by flow cytometry

Mock communities

Cell number of each species was monitored by flow cytometry with the Attune NxT™ Thermofisher® Flow Cytometer (Life Technologies, Singapore). Each population tagged with one or two fluorescent protein was detected with a specific set of channels described in **Table 3**. To validate the method, accuracy of the numbering of the 6 species was made with mock communities. The mock communities were constructed by incubating single species cultures overnight in synthetic must at 28°C with agitation. Subsequently, one

mL of culture was centrifuged at 4415 g for 5 min and the resulting cell pellet was resuspended in 1 mL of PBS (130 mM NaCl, 2.6 mM KCl, 7 mM Na₂HPO₄, 1.2 mM KH₂PO₄, pH 7.4; Sigma). Single-species cell suspensions at a concentration of 10⁶ cells/mL were prepared in PBS and combined to create mock communities in 96-well microplates (200 µL of final volume, 10⁶ cells/mL). Measures were run after a 3-fold dilution in a new microplate. In total, 30 communities were tested, each included one species with theoretical abundance of either 1, 5, 10, 50 or 90% while the five other species were in equal proportions. Cell numbering was performed both immediately after preparation of the mock communities in the microplate and after 2 hours at room temperature.

Table 3: Description of the set of channels (with dichroic filters details) used for the detection of the different populations considered in this study. Voltages were set using fluorescent and wild type cells to ensure a proper signal of both. The fluorescence phenotype of each strain is indicated with + (fluorescent) and – (non-fluorescent) on the corresponding channel. Viability was measured using Propidium Iodide (PI).

Population	Fluorochrome	Channel (laser and filter wavelengths in nm)	Voltage	Fluorescence
Dead cells	PI	BL3 (488 - 695-40)	340	+
Live cells	PI	BL3 (488 - 695-40)	340	-
<i>S. cerevisiae</i>	mCherry + GFP	YL2 (561 - 600DLP - 620/15)	320	+
		BL1 (488 - 495DLP-530/30)	260	+
<i>L. thermotolerans</i>	mCherry	YL2 (561 - 600DLP-620/15)	320	+
		BL1 (488 - 495DLP-530/30)	260	-
<i>T. delbrueckii</i>	mCitrine	BL1 (488 - 495DLP-530/30)	260	+
		VL2 (405 - 495DLP-512/25)	400	-
<i>S. bacillaris</i>	EGFP	BL1 (488 - 495DLP-530/30)	260	+
		VL2 (405 - 495DLP-512/25)	400	+
<i>H. uvarum</i>	mTagBFP2	YL2 (561 - 600DLP-620/15)	320	-
		BL1 (488 - 495DLP-530/30)	260	-
		VL1 (405 - 417LP-440/50)	340	+
<i>M. pulcherrima</i>		YL2 (561 - 600DLP-620/15)	320	-
		BL1 (488 - 495DLP-530/30)	260	-
		VL1 (405 - 417LP-440/50)	340	-

Population dynamics during fermentation

At the different sampling timepoints, 200 µL of sample were resuspended in 200 µL of PBS after centrifugation in 96-wells microplate (V-bottom) at 4415g for 5 min. Samples were diluted in PBS before reading so that the cell concentration was approximately 1·10⁵ to 5·10⁵ cells/mL. Total cell count was measured with the FSC and SSC channels (488 nm laser, 488/10 filter). To restore the fluorescence, cells suspended in PBS were kept at room temperature for 2 hours. This incubation step likely enables the maturation of fluorescent proteins which is oxygen-dependent (Hansen et al., 2001; Zimmer, 2002), while oxygen is rapidly depleted during fermentation (Bardi et al., 1999; Moenne et al., 2014). Moreover, we observed a decrease in fluorescence of eGFP under the control of the *ENO2* promoter in *S. cerevisiae* near the end of fermentation, reducing the accuracy of measurement after 144 hours of fermentation (up to 5% of inaccurate events at 144 hours). This was corrected with an incubation step for the consortia and *S. cerevisiae* monocultures in YPD for 1 hour (Breslow et al., 2008) followed with an incubation step of 1h in PBS. These steps did not impair total cell count or viability (Supplementary Figure 2). Viability was assessed after staining cells with 1 µg/mL propidium iodide (PI, stored at 4°C protected from light; Calbiochem). Cell number and percentage were obtained from gatings done on the Attune NxT software.

Metabolites analysis

For the metabolite analysis, 5 mL of samples were centrifuged 5 min at 4415 g at 4°C to get rid of cells. Supernatant aliquots were kept at -18°C before being diluted with 2.5 mM sulfuric acid (H₂SO₄, Merck, Darmstadt, Germany) at 1:6, and centrifuged again at 16 000 g for 5 min. Diluted samples were kept at -18°C until analysis. Extracellular metabolite and sugar concentrations (glucose, fructose, ethanol, glycerol, acetic acid, lactic acid, pyruvic acid, and α-ketoglutaric acid) were determined by high-performance liquid chromatography (HPLC), following the method described in (Deroite et al., 2018). Analyses were run on the

HPLC (HPLC 1260 Infinity, Agilent Technologies, Santa Clara, California, USA) using a Rezex ROA ion exclusion column (Phenomenex, Torrance, CA, USA) at 60°C, with a flow rate of 0.6 mL/min of 2.5 mM H₂SO₄. Concentrations of acetic acid, lactic acid and α-ketoglutaric acid were measured with a UVmeter at 210 nm and other compounds with a refractive index detector and chromatograms were analyzed on OPEN LAB 2X software. Fermentation samples were analyzed with technical duplicates and data analysis were carried out on the mean of both replicates.

Data analysis

Mock communities were analyzed by comparing theoretical cell concentration to the observed cell concentration, as measured by cytometry.

All fermentations were performed in biological triplicates, on three different runs.

Fermentations of the six monocultures and the 6-species model consortium were compared based on 10 fermentation parameters. They included three CO₂ kinetics parameters - latency (time needed to reach 5 g/L of total produced CO₂), time of fermentation (t_F, time when CO₂ production rate < 0.02 g/L/h), maximum CO₂ production rate (V_{max}) - and six metabolic parameters, namely the yields of ethanol, glycerol, and acetic, α-ketoglutaric, lactic and pyruvic acids. Metabolite yields were calculated with the formula:

$$(1) \quad Y_{\text{metabolite}} = \frac{\text{Final metabolite concentration (g/L)}}{\text{Initial sugar concentration (g/L)} - \text{Final sugar concentration (g/L)}}$$

Fermentations of the 5-species consortia were compared with the six metabolites yields and CO₂ yield. Differences in yields between the S200 and S280 conditions were visualized by calculating the difference between both conditions with the following formula:

$$(2) \quad \Delta_{S280,S200} = \frac{Y_{S280} - Y_{S200}}{Y_{S200}}$$

Data were analyzed with R studio software (version 4.3.1, R Core Team, 2024). Mock communities' data were analyzed with the 'ggpmisc' package (Aphalo, 2024). ANOVA were performed to compare the different monocultures and 6-species consortium parameters, followed by a post hoc Tukey test when significant using the 'rstatix' package (Kassambara, 2023). For the 5-species consortia, comparison between both sugar conditions were done with t-test for consortia C01 to C13, on the following parameters: residual sugars, yield in CO₂, and end yields in ethanol, glycerol, and acetic, lactic, α-ketoglutaric and pyruvic acids.

Results

Construction of consortium and cytometry numbering optimization

The model community that we used in this study was constituted of 6 different species at different initial abundance: *Saccharomyces cerevisiae* (10% of total population), *Hanseniaspora uvarum* (35%), *Metschnikowia pulcherrima* (25%), *Starmerella bacillaris* (20%), *Lachancea thermotolerans* (5%), and *Torulasporea delbrueckii* (5%). The species and their proportions were determined based on a literature analysis of 18 articles, and the species initial abundance was determined from the average of the initial abundance found in a subselection of 11 articles (Combina et al., 2005; Hierro et al., 2006; Di Maro et al., 2007; Zott et al., 2008; Ocón et al., 2010; Maturano et al., 2015; Ghosh et al., 2015; Bagheri et al., 2017; Simonin et al., 2018; Mateus et al., 2020; González-Alonso et al., 2021). These articles needed to include at least one sampling without inoculation and without enrichment steps, and the identification had to be at the species level. They encompassed different world regions and winemaking practices (grape variety, conventional and organic, etc). Despite the clear influence of these factors on yeast diversity, we found little relationship between the regions and practices with the presence of specific species, which is in line with the conclusions of a meta-analysis (Drumonde-Neves et al., 2021). Among the most frequent species, we decided to select only one species per genera with the assumption that it might increase phenotypic diversity and the overall usefulness of our model consortium. Thus, the six following species were selected: *S. cerevisiae*, *H. uvarum*, *M. pulcherrima*, *S. bacillaris*, *T. delbrueckii* and *L. thermotolerans* (Supplementary

Figure 3A). Then, the initial abundance for each species was determined from their natural initial abundance in must and early stages of fermentation (Supplementary Figure 3B).

The consortium was designed to track individually six species (*H. uvarum*, *L. thermotolerans*, *M. pulcherrima*, *S. bacillaris*, *S. cerevisiae*, *T. delbrueckii*) during fermentation. To this end, our strategy was to label the different species with different fluorescent proteins. The fluorescent proteins were selected based on their excitation and emission spectra to minimize overlaps. Genes of the fluorescent proteins were successfully integrated by homologous recombination in fusion of the *TDH3* gene into the genomes of *H. uvarum* (mTagBFP2), *S. bacillaris* (eGFP), *L. thermotolerans* (mCherry) and *T. delbrueckii* (mCitrine). *S. cerevisiae* was tagged with mCherry fused with *TDH3* and eGFP with *ENO2* (Table 1). For *M. pulcherrima*, a wild type strain was used since we did not manage to integrate genes at the locus even when using long homology sequences. This result is in accordance with previous studies that only obtained random integration and no targeted integration when transforming *M. pulcherrima*, despite the effort of limiting the NHEJ (Non-Homologous End Joining) repair pathway (Gordon et al., 2019; Moreno-Beltrán et al., 2021). As shown on Figure 1, which displays derived dot plots and gates used in this study, the different transformants could be well discriminated. *L. thermotolerans* and *S. cerevisiae* are distinguished by the mCherry fluorescence and *S. cerevisiae* by the additional GFP fluorescence. *T. delbrueckii* (mCitrine-tagged) cells could be separated from *S. bacillaris* (eGFP-tagged) using the violet laser, not needing any specific optical configuration, as reported for YFP (Yellow Fluorescent Protein, (Marcus & Raullet, 2013). Initially, the T-Sapphire fluorescent protein was also selected, but its signal overlapped with the mTagBFP2 signal and was not used further.

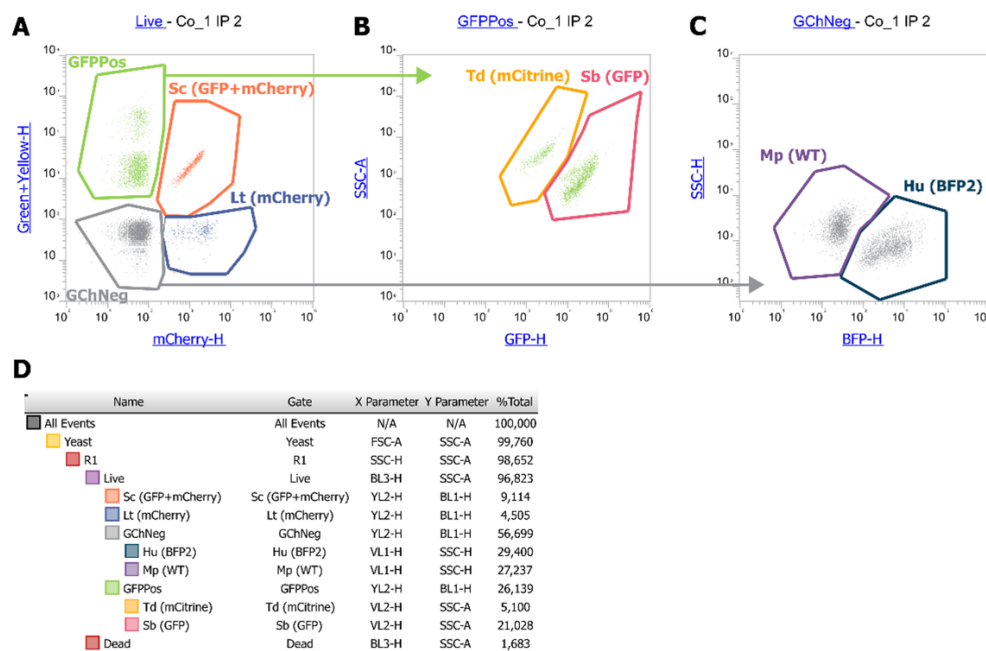


Figure 1: Cytometry set up with an example of sample at inoculation (10^6 cells/mL at sampling, followed by a 3-fold dilution before the measure). **A:** YL2 (600DLP-620/15)/BL1 (495DLP-530/30) dot plot is used to separate GFP positive and mCherry positive cells. **B:** VL2 (495DLP-512/25)/SSC dot plot derived from the GFPPos gate on A, is used to separate mCitrine (-) from eGFP signal (+). **C:** VL1 (417LP-440/50)/SSC dot plot derived from the GFPNeg gate on A, is used to separate non-fluorescent cells from BFP positive cells. **D:** Hierarchy of gating and percentage of each population. % Total indicates the % of the total population of events in the corresponding gate.

In addition, accurate numbering of the different yeast populations was verified by comparing measured to theoretical cell concentration in mock communities (Figure 2). As they are constructed with known composition, mock communities are used to validate methods for microbial quantification, such as metagenomics or cytometry (Tourlousse et al., 2021; van de Velde et al., 2022; Rué et al., 2023). We tested 6-species yeast mock communities composed of one species with theoretical abundance of either 1, 5, 10,

50 or 90%, the five other species in equal proportions composing the rest. Mock communities were constructed from overnight cultures in synthetic grape must (S200) that were diluted in PBS to a 10^6 cells/mL concentration. In total, 30 communities were tested by mixing the adequate volume of each single-species cell suspension in microplates, with a final cell concentration of 10^6 cells/mL. The concentration of each species within the mock communities was measured by flow cytometry. When species concentrations were numbered immediately after the mock assembly, the observed and theoretical cell concentrations were well correlated (R^2 ranging between 0.8 and 0.99, Figure 2A). However, during fermentation, a loss of cell fluorescence was observed after 24 hours, especially for the mCherry-tagged cells. To restore fluorescence, samples needed to stay at least 2 hours in PBS at room temperature. This step was also tested on the mock community, and except for *M. pulcherrima* that was under-estimated after the 2 hours ($R^2_{Mp} = 0.73$, Figure 2B), the other species were still accurately numbered ($R^2 \geq 0.90$).

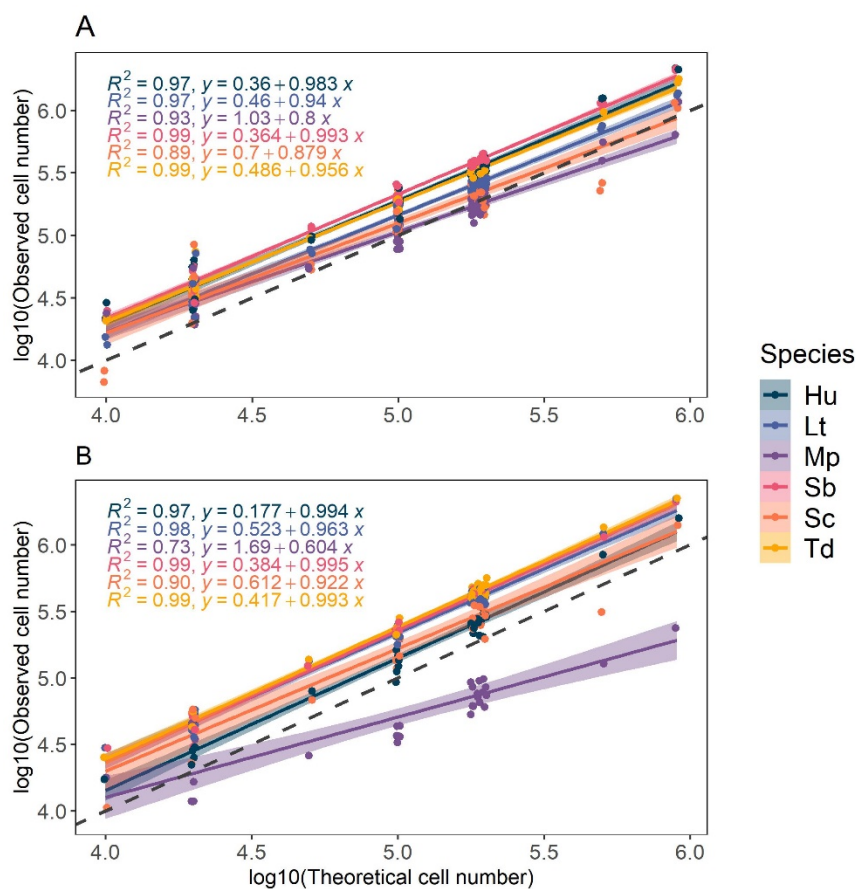


Figure 2: Comparison of observed population and theoretical population in 30 mock communities for immediate measure (A) and after 2 hours in PBS (B). Correlation factor and linear equation of observed population in function of theoretical populations are indicated for each species. Dashed line: $\log_{10}(\text{Observed cell number}) = \log_{10}(\text{Theoretical cell number})$. Hu: *H. uvarum*, Lt: *L. thermotolerans*, Mp: *M. pulcherrima*, Sb: *S. bacillaris*, Sc: *S. cerevisiae*, Td: *T. delbrueckii*.

Characterization of the 6-species model consortium

Population dynamics in the consortium and monocultures

Monocultures and the 6-species model consortium (Co) were characterized with fermentation in synthetic grape must (S200) at 1 L-scale. All fermenters were inoculated with a total cell concentration of 10^6 cells/mL and initial abundance of the six species in the 6-species consortium (Co) were 35% *H. uvarum*, 25% *M. pulcherrima*, 20% *S. bacillaris*, 10% *S. cerevisiae*, 5% *T. delbrueckii*, 5% *L. thermotolerans*. The dynamic of species abundance in the consortium are shown in Figure 3 and population dynamics of monocultures in Supplementary Figure 4. In monocultures, most species reached their maximum

population between 24 and 48 hours ranging from $1.6 \cdot 10^7$ to $9.5 \cdot 10^7$ cells/mL for *M. pulcherrima* and *S. cerevisiae* respectively (Supplementary Figure 4). In addition, except for rare events attributed to noise (< 5%), the fluorescent protein expression in genetically modified species was sufficient to identify live cells of each species in their respective gate throughout fermentation. In the consortium, the early fermentation phase was characterized by a rapid growth of *H. uvarum* that reached 65% of the total population at 12 h, with a maximum population of 6.7 log of cells/mL (Figure 3, Supplementary Table 5). On the contrary, *S. bacillaris* and *M. pulcherrima* abundance dropped under 5% after 12 hours, even though they were inoculated at 20 and 25%, respectively. *L. thermotolerans*, showed a little growth at 24h, reaching 6.3 log of cells/mL, (Supplementary Table 5), but quickly decreased after 48 hours. After 24 h, a drop of viability was observed (live cells < 75%) associated with the drop in abundance of non-*Saccharomyces* species, while *S. cerevisiae* became dominant in the consortium and represented 41% of the total population and 58% of the live population (Figure 3). This drop in non-*Saccharomyces* viability is unlikely to be directly caused by the ethanol concentration reached at 24h (8.17 ± 1.06 g/L), since it is inferior to the concentrations reached in monocultures (Supplementary Figure 5). Maximum population (8 log) in the consortium was reached after 48 h, with almost only *S. cerevisiae* remaining alive (Figure 3).

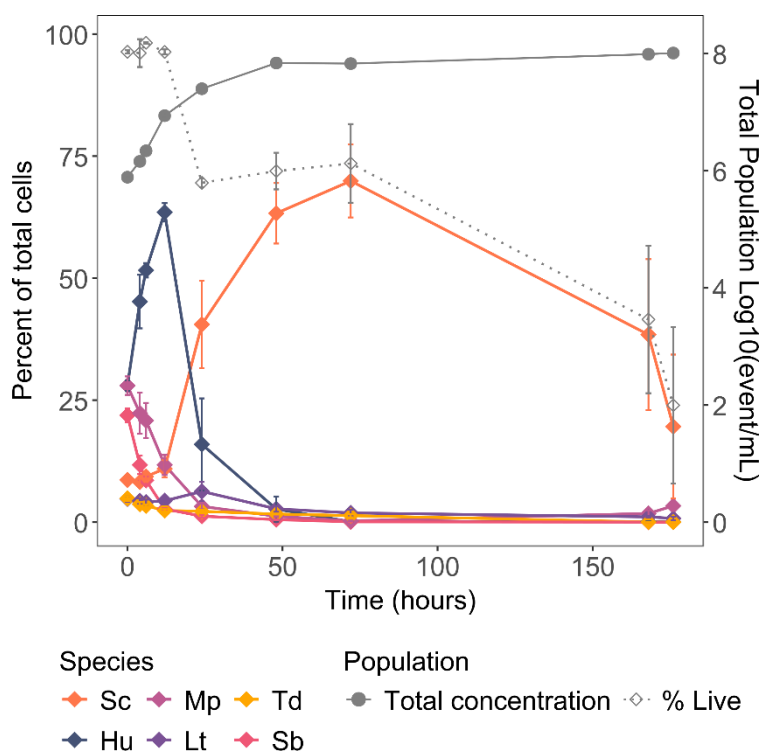


Figure 3: Individual growth of the different species in the 6-species consortium. The grey solid line corresponds to the cell concentration $\log_{10}(\text{cells/mL})$, the grey dotted line to the percent of live cell. Solid color lines describe the percent of the different species. Initial abundances were: 10% *S. cerevisiae* (Sc), 35% *H. uvarum* (Hu), 25% *M. pulcherrima* (Mp), 20% *S. bacillaris* (Sb), 5% *L. thermotolerans* (Lt), and 5% *T. delbrueckii* (Td).

Fermentation of the 6-species consortium and monocultures

Fermentation capacity of the 6-species consortium and its member species alone was evaluated through CO_2 production (Figure 4). The consortium performance was similar to that of *S. cerevisiae* alone, with a slightly longer latency and fermentation time due to the lower inoculation rate of *S. cerevisiae* in the consortium compared to the monoculture (latency = 25.3 ± 1.9 h and $t_f = 158.5 \pm 6.1$ h compared to 18.7 ± 0.7 and 120.6 ± 3.9 h respectively). The maximum CO_2 rate (V_{\max}) of consortium Co was significantly different from any monocultures. It reached 1.74 ± 0.0591 g/L/h (Figure 4B), which was between the maximum CO_2 rate of *S. cerevisiae* (2.16 ± 0.02 g/L/h), *T. delbrueckii* (1.11 ± 0.11 g/L/h) and *L. thermotolerans* (1.01 ± 0.06 g/L/h) alone. The consortium reached the same total CO_2 production as *S. cerevisiae* (93.08 ± 1.06 g), while *M. pulcherrima*, *H. uvarum*, and *S. bacillaris* alone showed the lowest CO_2 production (Figure 4B).

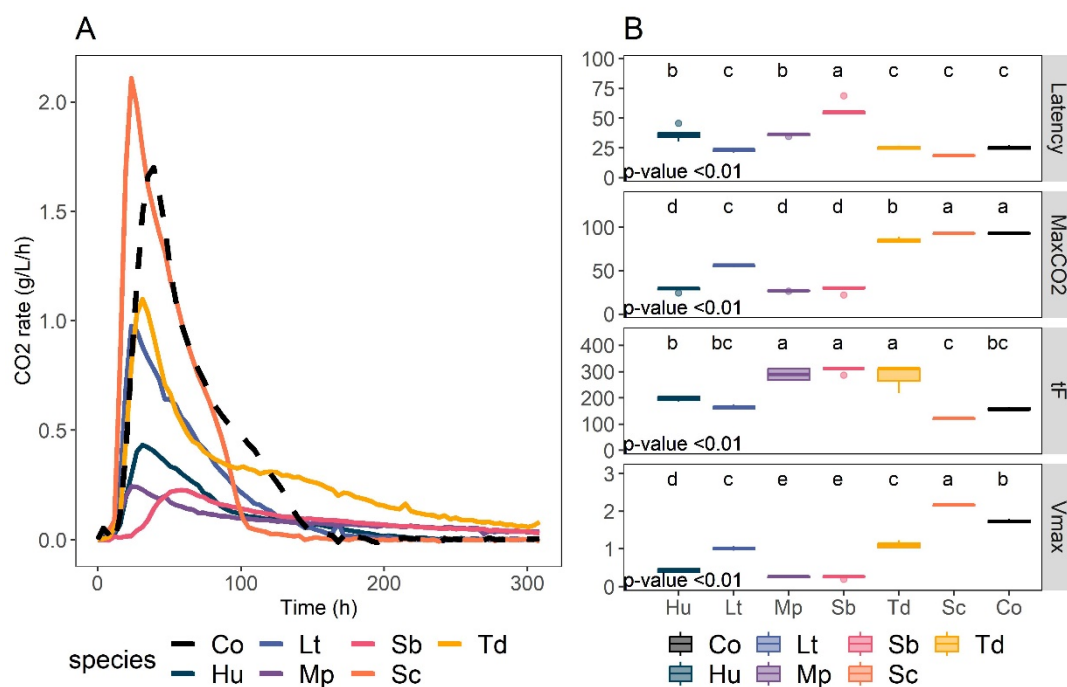


Figure 4: Fermentation kinetics of monocultures and consortium Co. **A:** CO₂ production rate kinetics of each monoculture (solid line) and consortium Co (dashed line). Smoothing with the Loess method was applied on the results of triplicates. **B:** Kinetics parameters obtained from CO₂ loss. MaxCO₂ = maximum CO₂ produced (in g/L); tF = fermentation time (time to reach CO₂ production rate < 0.02 g/L/h), Vmax = maximum rate of CO₂ production, and Latency = time necessary for total CO₂ production to 5 g/L. ANOVA results are indicated by the p-value. Statistical groups determined with post-hoc Tukey tests are indicated with lowercase letters. Co: Consortium, Hu: *H. uvarum*, Lt: *L. thermotolerans*, Mp: *M. pulcherrima*, Sb: *S. bacillaris*, Sc: *S. cerevisiae*, Td: *T. delbrueckii*.

In addition, changes in concentration of sugars and metabolites from the central carbon metabolism were evaluated. Once again, the 6-species consortium followed the trend of *S. cerevisiae* alone with a delay (Figure 5), showing the same end yields in ethanol (0.499 ± 0.001), acetic acid (0.002 ± 0.00), lactic acid (0.003 ± 0.00), and succinic acid (0.003 ± 0.00) as *S. cerevisiae* was alone at the end of fermentation (Supplementary Figure 6). Both the consortium and *S. cerevisiae* monoculture reached dryness (total residual sugars < 2g/L), and *T. delbrueckii* left 15.3 ± 5.28 of residual sugars. Other non-*Saccharomyces* left between 80 ± 3.32 g/L for *L. thermotolerans* and 137 g/L of sugars for *M. pulcherrima* and *H. uvarum*. Some difference can also be seen for the α -ketoglutaric acid release by the consortium, which seemed to be produced more slowly than *S. cerevisiae* monoculture (Figure 5) but reached a yield similar to monocultures of *S. cerevisiae*, *L. thermotolerans*, *T. delbrueckii* or *H. uvarum* ($Y_{\alpha\text{-keto, Co}} = 1.94\text{e-}04 \pm 8.66\text{e-}06$, Supplementary Figure 6). *M. pulcherrima* and *S. bacillaris* monocultures overproduced α -ketoglutaric acid in monoculture ($Y_{\alpha\text{-keto, Mp}} = 28.6\text{e-}04 \pm 5.9\text{e-}04$ g/g, $Y_{\alpha\text{-keto, Sb}} = 15.8\text{e-}04 \pm 1.4\text{e-}04$ g/g, Supplementary Figure 6). Similarly, *M. pulcherrima* and *S. bacillaris* had the two highest glycerol yields ($Y_{\text{glycerol, Mp}} = 0.068 \pm 0.004$ g/g, $Y_{\text{glycerol, Sb}} = 0.096 \pm 0.002$ g/g, Supplementary Figure 6). Despite that and their high initial abundance in the consortium (45% in total), their early disappearance likely prevented them from producing noticeable amounts of α -ketoglutaric acid and glycerol in the consortium. In the consortium, pyruvic acid was produced in the first 48 hours of fermentation (reaching 0.166 ± 0.005 g/L) then almost entirely consumed at the end (0.023 ± 0.001 g/L, Supplementary Figure 6). Monocultures of *S. cerevisiae*, *L. thermotolerans*, and *H. uvarum* showed a similar behavior with an initial production then consumption of pyruvic acid, reaching respectively a maximum concentration of 0.230 ± 0.013 g/L at 48h, 0.050 ± 0.008 at 24h, 0.153 ± 0.007 at 48h (Figure 5, Supplementary Figure 6). On the contrary, *S. bacillaris* and *T. delbrueckii* seemed to produce pyruvic acid without switching to consume it (Figure 5). *S. bacillaris* is already known to reroute metabolism towards pyruvic acid production and glycerol for redox equilibrium (Magyar et al., 2014; Englezos et al., 2018). The absence of pyruvic acid consumption may also be related

to differences in nutrient requirements, since both nitrogen or vitamins have been reported to modify the production balance of pyruvic acid in *S. cerevisiae* (Radler, 1993).

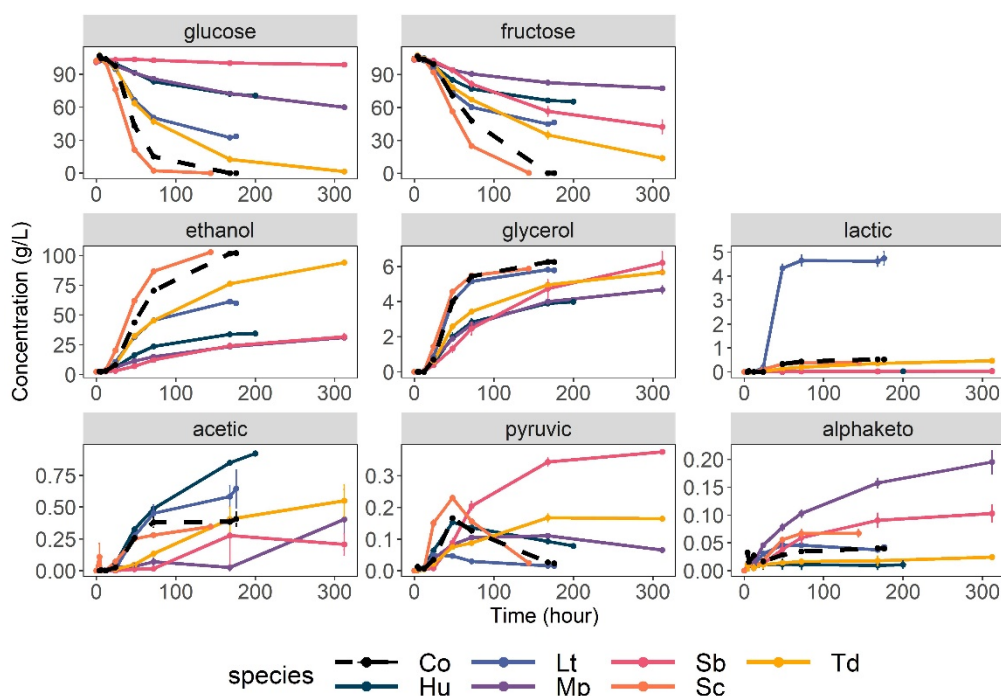


Figure 5: Kinetics of consumption and production of central carbon metabolites in monocultures and consortium. Error bars indicate the standard error. Co: Consortium, Hu: *H. uvarum*, Lt: *L. thermotolerans*, Mp: *M. pulcherrima*, Sb: *S. bacillaris*, Sc: *S. cerevisiae*, Td: *T. delbrueckii*.

Impact of consortium's diversity on osmotic stress response

The aforementioned consortium was developed as a tool to further study ecological drivers of the wine microbial community. As a first application, we focused on determining how the initial abundance of species would affect the fermentation process, especially when submitted to an osmotic stress. We tested twelve yeast consortia (numbered C02 to C12) with varying evenness of five species (excluding *M. pulcherrima* due to its underestimation), alongside a *S. cerevisiae* monoculture (C01) and a consortium without *S. cerevisiae* (C13). Fermentations were conducted in 250 mL-scale of synthetic grape must with two sugar concentration: 200 g/L (S200) and 280 g/L (S280). These two concentrations were chosen to simulate a common concentration of sugar found in musts (200 g/L) and a high sugar concentration similar to those already met in some world regions due to climate change (Bock et al., 2013; Gambetta & Kurtural, 2021).

In all consortia initially containing *S. cerevisiae*, this species largely dominated after 120 hours in both sugar conditions and constituted the only live cells, except in consortium C03 (Figure 6, Supplementary Figure 7, Supplementary Table 6). Unlike the others, in the C03 consortium there was 17% remaining of *T. delbrueckii* at 120h in condition S280, which led to a delayed dominance of *S. cerevisiae* that reached over 95% of total cells only after 168 hours instead of 120 hours in the S200 condition. *S. cerevisiae* monoculture was not much affected by the different sugar conditions and reached its maximum population of 8.12 log at 21 hours (Supplementary Table 6). On the other hand, observations revealed variations in the dynamics of non-*Saccharomyces* populations depending on the initial sugar concentration (Figure 6) with significant differences in population abundance between S200 and S280 found at 45 hours. In most consortia, *H. uvarum* reached a similar maximum proportion at 21 h for both sugar conditions but decreased more sharply at 45h in condition S280 (Figure 6). Similarly, *L. thermotolerans* tended to decrease more in condition S280, except in consortium C13 (without *S. cerevisiae*), while *T. delbrueckii* tended to maintain a higher proportion in condition S280 as compared to S200 (Figure 6). At 45 hours in consortium C03, the decrease in abundance between S200 and S280 of *L. thermotolerans* partially matched the increase in abundance of *T. delbrueckii* (6% less *L. thermotolerans* and 15% more *T. delbrueckii* in condition S280). The

C03 consortium also showed a longer persistence of *T. delbrueckii* with S280 compared to the other consortia. Interestingly, in the *S. cerevisiae*-free consortium (C13), while both *L. thermotolerans* and *T. delbrueckii* were present at the end of fermentation, *L. thermotolerans* dominated the consortium after 21 hours of fermentation and tended to maintain higher abundance in S280. Regarding *S. bacillaris*, its population decreased very quickly and its proportion was less than 5% after 21h in all consortia, for both sugar concentrations.

Fermentation performance was also assessed, through metabolite and CO₂ yields. The differences in yield of the main metabolite from carbon metabolism between S280 and S200 are shown monocultures in Figure 7. Positive values indicate higher yield in condition S280, while negative values indicate lower yield in condition S280.

Higher initial sugar concentrations led *S. cerevisiae* to produce more acetic acid (increase by 75 % of yield in acetic acid) coupled to a lower production in α -ketoglutaric acid (decrease by 60 % of yield in α -ketoglutaric acid, orange diamond on Figure 7).

In addition, we also observed a lower yield in ethanol and lactic acid for *S. cerevisiae* monoculture with high initial sugars, although very small for ethanol (decrease of 1.6 % for the ethanol yield and 25% for the lactic acid yield). We did not observe differences for yield of pyruvic acid for both initial sugar conditions in the *S. cerevisiae* monoculture. We next set out to compare the response to osmotic stress in the consortia. The differences in metabolite yield between the two sugar conditions are shown in Figure 7. The different consortia exhibited a wide range of responses, especially regarding the production of acetic and pyruvic acids. Contrary to *S. cerevisiae* monoculture, consortia tended to have lower pyruvic acid yield in condition S280, but differences were significant only in consortia C07, C11 and C13. Regarding acetic acid, its overproduction in condition S280 was greatly reduced in all consortia compared to *S. cerevisiae* monoculture since the highest increase was of 31 % in consortium C02. In the consortium inoculated with a higher proportion of *S. cerevisiae* (C12), 55 % more acetic acid was produced in condition S280 than at S200. In addition, differences in yield of acetic acid in consortia were only significant for consortia C02, C11 and C12. On the contrary, the yield in α -ketoglutaric acid remained lower in condition S280 compared to S200. Differences ranged from 53% lower to 68% lower in consortia C11 and C03 respectively. Only in consortium C02 was it not significantly different between both sugar conditions. This could suggest a prevailing importance of *S. cerevisiae* concerning this metabolite since the difference between both S280 and S200 was often close to that observed in *S. cerevisiae* monocultures, as indicated by the orange diamonds (Figure 7). Regarding ethanol, consortia showed an overall lower yield with S200 compared to *S. cerevisiae* monocultures (between 0.482 ± 0.001 in C05 and 0.494 ± 0.003 in C10). Surprisingly, even though glycerol is an essential osmolyte involved in osmotic stress resistance, our results did not show significant differences in glycerol yields between both sugar conditions (Figure 7). Our observation may be explained by an insufficient difference between sugar conditions, and therefore osmotic pressures differences. This too small a difference may not be enough to cause noticeable change in glycerol yield, even though such concentration have been found to cause differences in the lag phase of *S. cerevisiae* alone (Ferreira et al., 2017).

Effect of initial composition on consortia behavior

Consortia C02 to C11 were designed to represent variable α diversity, through increasing evenness of the initial relative abundance of non-*Saccharomyces* species (Table 2). Hence, the Shannon index of the different consortia ranged from 0.895 in C02 to 1.449 in C11, except C07 that presents an equal proportion of each non-*Saccharomyces* species, and a 1,515 Shannon index. These 10 consortia also included the same initial abundance of *S. cerevisiae* (5%), to avoid changes being related only to *S. cerevisiae*. We were interested in knowing whether an increasing diversity in the yeast consortia would help maintain the fermentation performance during the osmotic stress. However, we found no demonstrable effect of the initial diversity on the different parameters related to fermentation performance, such as yield in CO₂, yield in metabolites or residual sugars (Supplementary Figure 8). However, the initial composition still influenced the behavior of the consortia, especially for the difference in acetic and α -ketoglutaric yields between both sugar conditions (Supplementary Figure 9).

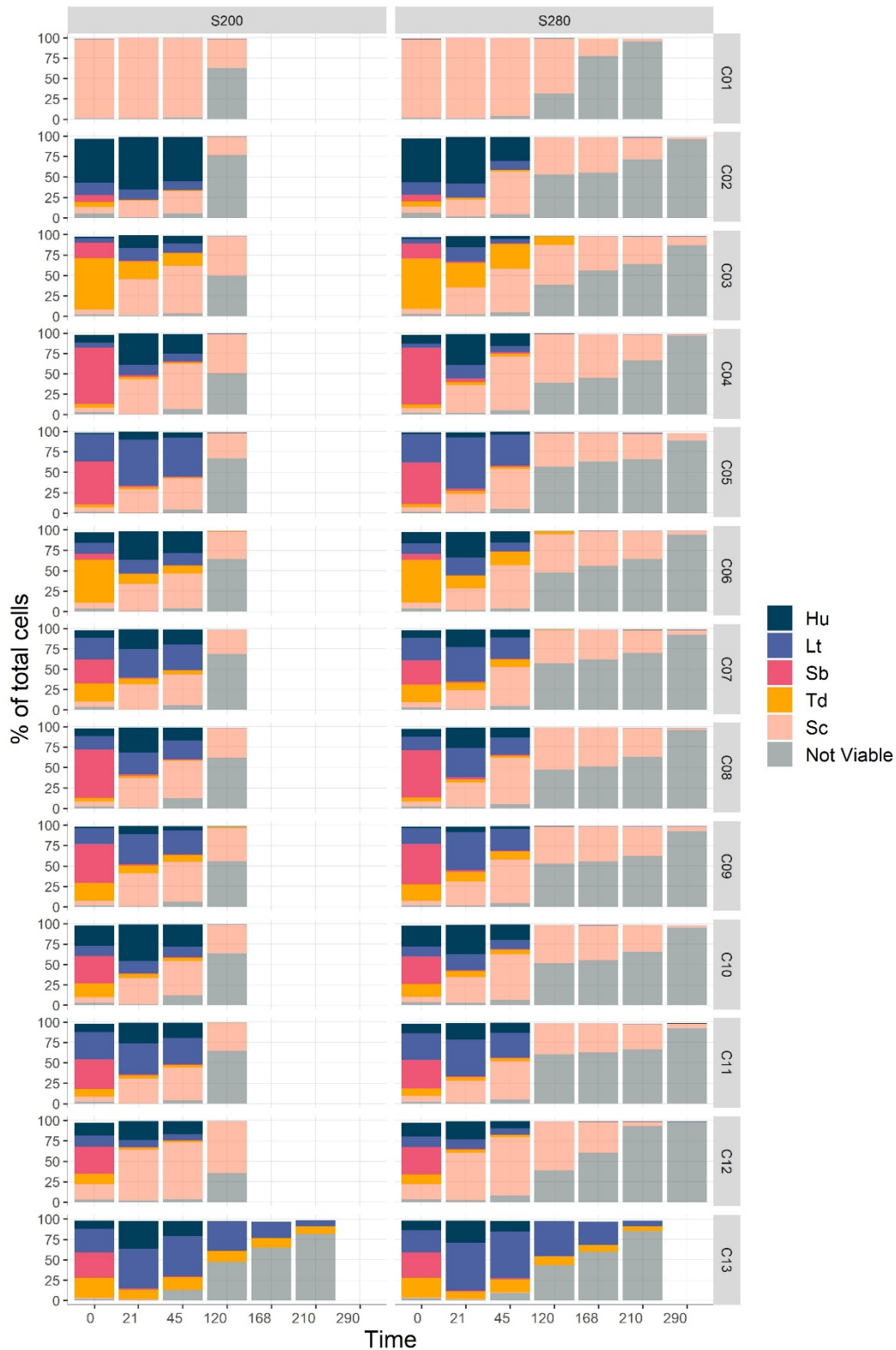


Figure 6: Population dynamics in consortia during fermentation with 200 and 280 g/L of sugars. C01 is a monoculture of *S. cerevisiae*. C02 to C11 initially contained 5% of *S. cerevisiae*. C12 initially contained 15% of *S. cerevisiae* and C13 did not contain *S. cerevisiae*. Hu: *H. uvarum*, Lt: *L. thermotolerans*, Sb: *S. bacillaris*, Td: *T. delbrueckii*, Sc: *S. cerevisiae*.

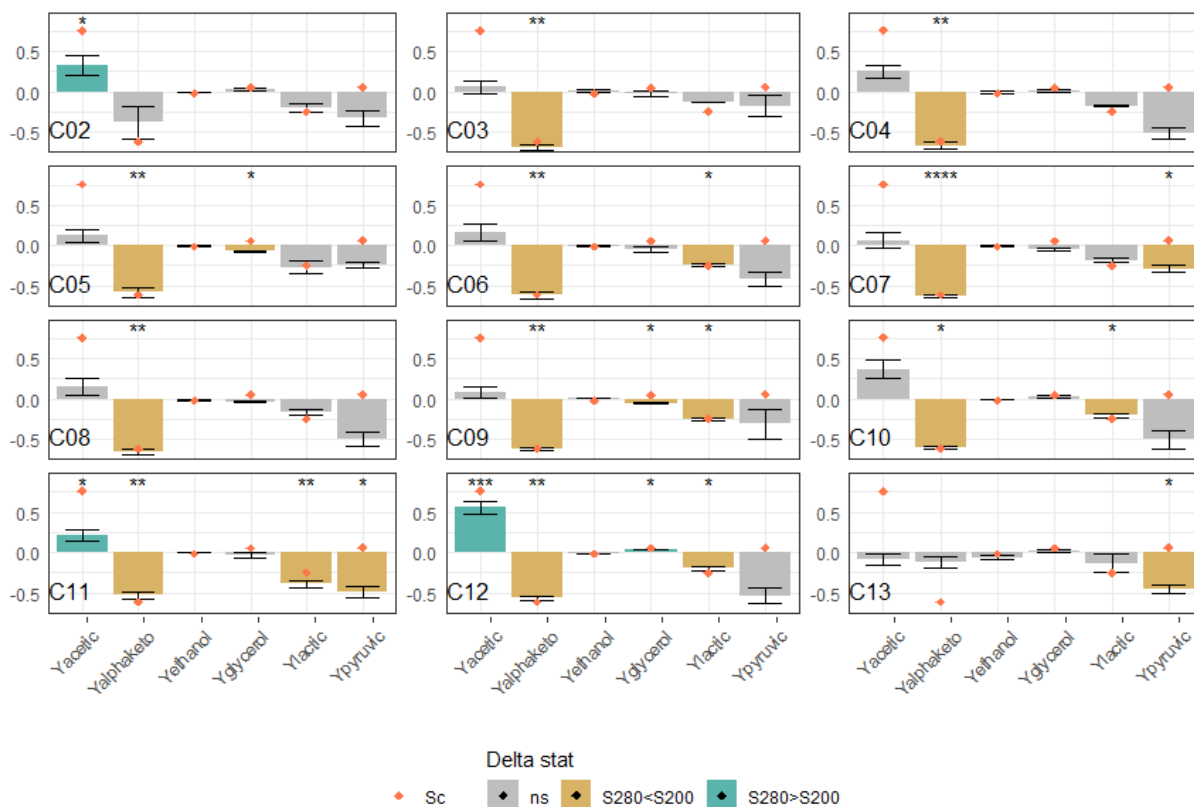


Figure 7: Metabolite yield changes in the different consortia (calculated by dividing the difference between measures for S280 and S200 by the measure for S200). Both sugar conditions were compared by T-test. Gray bars: p-value > 0.05; *, **, ***: p-value inferior to 0.05, 0.01, 0.0001 respectively (in blue when delta is positive, yellow when delta is negative). Orange diamonds indicate the values observed in the *S. cerevisiae* monoculture. C02 to C11 initially contained 5% of *S. cerevisiae*, C12 initially contained 15% of *S. cerevisiae* and C13 did not include *S. cerevisiae*.

Discussion

In the present study, we constructed a new model community of yeast species that can be numbered by flow cytometry thanks to the expression of different fluorescent proteins. To validate the accuracy of this counting method, we employed mock communities. Then, we characterized the performances of the 6-species community by assessing various fermentation parameters. Finally, to further prove its usefulness, twelve consortia were tested in enological conditions with two different sugar concentrations to evaluate the influence of varying initial evenness.

In the first part of this work, we tested whether the strategy of species quantification during fermentation was applicable and accurate. Five out of six species were successfully tagged with a set of four fluorescent proteins that can readily be discriminated with a flow cytometry equipped with the appropriate optical configuration. We then assembled 30 mock communities including *S. cerevisiae*, *H. uvarum*, *M. pulcherrima*, *S. bacillaris*, *L. thermotolerans*, and *T. delbrueckii* with abundance ranging from 1 to 90 %. In the range of concentrations tested here, our results indicate that the concentration of cells measured by cytometry highly correlates with the theoretical value. Hence, the quantification strategy could be validated on a consortium including 5 to 6 species. It should still be noted that the accuracy in numbering of *M. pulcherrima* decreased with longer handling time, which could lead to its underestimation and should be taken into account when including this species.

During fermentation, species succession of the 6-species community described in this study reflected trends found in both natural communities and laboratory cocultures. For example, as observed in our data, several studies have reported a fast multiplication of *H. uvarum* in early fermentation, including studies in cocultures and consortia (four species) grown in synthetic grape must (Lleixà et al., 2016; Harlé et al., 2020), but also at industrial scale non-inoculated fermentations (Combina et al., 2005). However, in industrial

conditions, this increase of *H. uvarum* can be limited when treating must with SO₂, which is a chemical commonly used as an antimicrobial and antioxidant agent, promoting *S. cerevisiae* (Grangeteau et al., 2017). After 24 hours, *M. pulcherrima* and *S. bacillaris* were detected under 5 % in our consortium. This early decline of *M. pulcherrima* in fermentation has been observed previously (Combina et al., 2005; Chasseriaud et al., 2018), whereas several studies have found *S. bacillaris* able to multiply and maintain a relatively high population in cocultures. For instance, in semi-industrial scale fermentations, *S. bacillaris* could be found in mid fermentation. However, this was related to a later onset of *S. cerevisiae* (Ocón et al., 2010). For other model consortia containing 8 species, tested in both synthetic and natural grape must, *S. bacillaris* remained present up to the mid or end of fermentation (Bagheri et al., 2017). Discrepancies on the presence of *S. bacillaris* during fermentation might be due to different media composition, as was demonstrated with different initial sugar and nitrogen content (Lleixà et al., 2016). In addition, the result of interactions may vary across strains of the same species (Wang et al., 2016; Onetto et al., 2021), even though we observed similar dynamics in cocultures with three different strains of *S. bacillaris* (Pourcelot et al., 2023).

Regarding *L. thermotolerans* and *T. delbrueckii*, both were detectable up to 72 hours in our consortium despite their low inoculation ratio, showing a rather good persistence. In a four species consortium, these two species were able to reach a sizable population despite the presence of *S. cerevisiae*. However, their inoculation ratio was much higher (Conacher et al., 2020). Similarly, *L. thermotolerans* was also found at the end of fermentation of Chenin Blanc grape must, in a consortium of eight species (Bagheri et al., 2017). In natural communities, their maintenance is harder to evaluate since they are present in only low abundance. However, they have been found mid-fermentations (Sternes et al., 2017) and at the end of fermentation in some occasions (Díaz et al., 2013; Simonin et al., 2018).

As for *S. cerevisiae*, it was the main viable species after 24 hours and the only viable species present in the consortium after 72 hours. We can assume that the early drop in viability that we observed between 12 and 24 hours is likely due to the death of non-*Saccharomyces* while *S. cerevisiae* reached its maximum population. Indeed, previous works on cocultures found similar results with non-*Saccharomyces* (such as *L. thermotolerans*, *T. delbrueckii* or *M. pulcherrima*) populations tended to decrease once *S. cerevisiae* reached a high cell number or a high cell number of live *S. cerevisiae* was added (Nissen et al., 2003; Kapsopoulou et al., 2005; Comitini et al., 2011; Taillandier et al., 2014). This phenomenon is also evidenced in sequential inoculation when non-*Saccharomyces* stop growing or even die after the addition of *S. cerevisiae* (Benito et al., 2015; Binati et al., 2020; Seguinot et al., 2020). In addition, a direct toxicity of ethanol can be ruled out as the ethanol concentrations present in the consortium during the non-*Saccharomyces* viability decline were lower than those observed in mono-cultures (Supplementary Figure 8) which was also observed by (Holm Hansen et al., 2001). However, recent works from (Lax & Gore, 2023) showed that increasing concentrations of ethanol (even at relatively low concentrations) change bistable interactions into competitive interactions in favor of *S. cerevisiae* highlighting the role of environmental changes on microbial dynamics.

Our data also presented species-related features, such as high glycerol and α -ketoglutaric acid production for *M. pulcherrima* or *S. bacillaris* monocultures. These characteristics have previously been described in monocultures in synthetic must (Englezos et al., 2018; Mbuyane et al., 2022) and in mixed fermentations (Comitini et al., 2011; Englezos et al., 2019; Binati et al., 2020; Seguinot et al., 2020). Similarly, the great production of lactic acid observed here in *L. thermotolerans* monocultures is already known, even though it varies greatly between strains and conditions (Benito et al., 2015; Vaquero et al., 2020). Concerning the 6-species community, its metabolite production and fermentation kinetics seemed mostly influenced by *S. cerevisiae* but was intermediate with non-*Saccharomyces*, which is commonly observed in cocultures (Renault et al., 2013; Bagheri et al., 2017; Harlé et al., 2020). Our second experiment also highlighted the influence of the different species on the fermentation performance in consortia leading to variation in the response to osmotic stress more or less influenced by the presence of *S. cerevisiae*.

As a proof-of-concept, we employed the yeast community with the 5 fluorescently tagged species to investigate the effect of different initial evenness of consortia on their response to two sugar concentrations (S200 and S280). These two concentrations were chosen to simulate a common concentration of sugar found in musts (200 g/L) and a high sugar concentration (280 g/L, (Ferreira et al., 2017; Schmidt et al., 2020). The high sugar concentrations have already been found in different world

regions in recent years (Bock et al., 2013; Gambetta & Kurtural, 2021). Altogether, our results indicated a tendency of *T. delbrueckii* and *S. cerevisiae* to have high competitive advantage during fermentations with high sugar content, while *H. uvarum* and *L. thermotolerans* were negatively impacted. *T. delbrueckii* is described as relatively osmotolerant, to both salts and reducing sugars (Lages et al., 1999; Hernandez-Lopez et al., 2003) and was shown to maintain a high population in natural grape musts with 250 to 360 g/L of sugars (Bely et al., 2008; Belda et al., 2015). Thus, the fact that it tended to have a higher competitive advantage at S280 in our study was to be expected. On the other hand, we found that *S. bacillaris* abundance decreased very quickly even in the S280 condition. This is somewhat surprising given this species is osmotolerant and could be expected to have a competitive advantage in high sugar must (Tofalo et al., 2012; Csoma et al., 2020). *S. bacillaris* is also often isolated in fermentations of high sugar must, such as icewine or botrytised wine that can usually contain at least 350 g/L of reducing sugar (Magyar & Soós, 2016). It can even dominate early and middle stages of such fermentations (Nisiotou et al., 2007; Magyar & Soós, 2016). Our inconsistent results might be due to the use of synthetic must with high nitrogen content that could limit the establishment of *S. bacillaris* in a community, in favor of faster growing species. Fewer data are available for *H. uvarum* or *L. thermotolerans* in conditions of high-sugar fermentation. In botrytised must, *H. uvarum* was shown to decrease more quickly than in healthy must, but other factors than the initial osmotic stress, such as presence of other species, may also explain these results since this observation stayed true even when there was no difference in initial sugar (Nisiotou et al., 2007; Contreras et al., 2015).

In the osmotic stress condition, the most striking difference between consortia and *S. cerevisiae* monocultures was the overproduction of acetic acid. *S. cerevisiae* overproduced acetic acid in the S280 condition, while the acetic acid overproduction was smaller in consortia and varied significantly between consortia. This may be partly due to the presence of non-*Saccharomyces* since several studies have reported a positive effect of mixed fermentation of *S. cerevisiae* with non-*Saccharomyces*, namely *S. bacillaris* and *M. pulcherrima*, in reducing the acetate yield (Rantsiou et al., 2012; Contreras et al., 2015; González-Royo et al., 2015; Mbuyane et al., 2022). Another explanation might also lie in the population changes between both sugar conditions. With S280, *H. uvarum* decreased more quickly while *T. delbrueckii* stayed longer. *T. delbrueckii* is known to produce low amount of acetic acid (Bely et al., 2008; Renault et al., 2009), while *H. uvarum* is associated with high production in acetic acid (Ciani & Maccarelli, 1998; Capece et al., 2005; Mendoza et al., 2019). Their difference in dynamics between both sugar concentrations may therefore influence the overall response.

Our data also showed differences of population dynamics with varying initial composition, which highlights that initial abundance is determinant in the species succession in yeast communities (Lax & Gore, 2023; Conacher et al., 2024). However, we found no correlation between initial evenness and fermentation parameters. Several factors could explain this result. The enhanced functionality observed when increasing diversity relies on the assumption that more diverse community will include complementary species using various resources through increased richness (Cardinale, 2011). In our case, as we focused only on initial evenness with a constant number of species (and therefore species richness), the range of diversity tested might have been too limited. For example, Ruiz et al. (2023) showed a negative effect of an increasing richness in wine yeast communities. They observed that *S. cerevisiae* could not finish fermentation in some communities due to the higher probability of the presence of antagonistic species. Diversity effect has also been observed in microcosms, where fermentation performance was reduced in the highest and lowest diversity context, due to a lower establishment of *S. cerevisiae* (Boynton & Greig, 2016). In addition, the use of synthetic media may not be sufficient to generate a set of ecological sub-niches that are all the more covered as microbial diversity increases (Hooper et al., 2005; Cardinale, 2011; Shade et al., 2012) and account for multiple stress factors. This seems to lead to discrepancies of results between synthetic media and more realistic substrate (Barny et al., 2024). In an enological context, Schmidt et al. (2020) observed differences in *S. cerevisiae* strains dynamics in natural must with 200 or 280 g/L of sugars, but no difference in synthetic must. The low number of carbon sources present in high concentration might also have led to an increased competition between the species leading to the dominance of a single species (Ratzke et al., 2020). With *S. cerevisiae* having a particularly high competitive advantage in fermentative environments and being able to actively modify its environment (Goddard, 2008; Williams et al., 2015), the overall fermentation process in consortia was probably driven by *S. cerevisiae* since in both sugar conditions non-*Saccharomyces* species had been outcompeted about 48

hours. The quick decline of non-*Saccharomyces* could limit their impact on the fermentation and thus the actual impact of their initial evenness.

Taken together, our results confirm the applicability of the combined use of fluorescently tagged cells and cytometry to follow several species individually in oenological fermentations. As highlighted by previous papers, working with strains tagged with fluorescent proteins enables real-time tracking of the different subpopulations and has been successfully applied in mixed fermentations of one non-*Saccharomyces* and *S. cerevisiae* (Petitgonnet et al., 2019; Harlé et al., 2020), but rarely included more species (Conacher et al., 2020). The increased number of species that can be included in the community compared to previous fluorescent-strains based model could enable testing more complex community composition. Other studies including more species in their consortium employ cultivation or molecular biology methods to follow the microbial dynamics (Lleixà et al., 2016; Bagheri et al., 2017; Chasseriaud et al., 2018). These methods allow enumeration in natural community without specific tagging of the different species but involve heavier experiments and a longer time between sampling and results. To scale-up the number of community tested across a wider range of environmental conditions, our community should be compatible with microfluidic tools based on fluorescent microscopy (Kehe et al., 2019). In its current form, our approach has three important limitations. First, this approach needs a significant initial time investment in molecular biology techniques to construct the strains and some species still prove difficult to transform precisely. Second, our system is more accurate for sub-populations with high cell density. Indeed, despite our effort, we observed noise events leading to detection of cell from species not present up to $5 \cdot 10^5$ cells/mL. This limits the current system to high cell density numeration and relative abundance. Third, it is necessary to have a cytometer with the appropriate lasers to detect all the fluorescent proteins used here, which can be limiting for some labs. This might be circumvented by changing the tagging strategy and exploiting various level of expression of only two fluorescent proteins (Anzalone et al., 2021). However, this has never been tested in non-*Saccharomyces* species.

Conclusion

In this study, we successfully developed a 6-species consortium of fluorescently tagged wine yeasts that allow accurate real-time tracking of species subpopulations during fermentation. The consortium was also fully characterized in terms of population dynamics and phenotype, such as metabolite production and fermentation kinetics. The strains constructed in this work are available to the scientific community at the CIRM-levures. This model community not only includes common species among the most frequent found in grape musts but also species known for their various applications, such as starter cultures, bioprotection, and other biotechnological processes and for which molecular tools are still sparse. This microbial consortium could be a valuable resource for applications in yeast ecology and support future research aimed at investigating the influence of stress factors relevant to the fermentation process, particularly when using multispecies starters. Consequently, the trends observed within the 6- and 5-species communities and our methodology could be applied and tested under a wider spectrum of environmental conditions. Model communities could also include different yeast strains or bacterial species to follow both the alcoholic and malolactic fermentations. Ultimately, the insights gained from studying population dynamics might provide strategies to mitigate fermentations by managing the yeast population.

Acknowledgements

We are thankful to the CIRM Levures and C. Neuvéglise for providing the yeast strains, F. Macna for carrying out the HPLC analysis, D. Segond for his support with cytometry analysis.

Preprint version 4 of this article has been peer-reviewed and recommended by Peer Community In Microbiol (<https://doi.org/10.24072/pci.microbiol.100118>; Cubillos, 2024).

Funding

This work was funded by a French doctoral scholarship provided by the University of Montpellier (GAIA doctoral school).

Conflict of interest disclosure

The authors declare that they comply with the PCI rule of having no financial conflicts of interest in relation to the content of the article. Thibault Nidelet is a recommender for PCI Microbiology.

Data, scripts, code, and supplementary information availability

All data, scripts and supplementary information are available online in the following zenodo repository: <https://doi.org/10.5281/zenodo.14007596>; Pourcelot et al., 2024.

References

- Alekseeva AY, Groenenboom AE, Smid EJ, Schoustra SE (2021) Eco-Evolutionary Dynamics in Microbial Communities from Spontaneous Fermented Foods. *International journal of environmental research and public health*, **18**. <https://doi.org/10.3390/ijerph181910093>
- Anzalone AV, Jimenez M, Cornish VW (2021) FRAME-tags: genetically encoded fluorescent markers for multiplexed barcoding and time-resolved tracking of live cells. , 2021.04.09.436507. <https://doi.org/10.1101/2021.04.09.436507>
- Aphalo PJ (2024) *ggpmisc: Miscellaneous extensions to "ggplot2."*
- Bagheri B, Bauer FF, Setati ME (2016) The Diversity and Dynamics of Indigenous Yeast Communities in Grape Must from Vineyards Employing Different Agronomic Practices and their Influence on Wine Fermentation. *South African Journal of Enology and Viticulture*, **36**. <https://doi.org/10.21548/36-2-957>
- Bagheri B, Bauer FF, Setati ME (2017) The Impact of *Saccharomyces cerevisiae* on a Wine Yeast Consortium in Natural and Inoculated Fermentations. *Frontiers in microbiology*, **8**, 1988. <https://doi.org/10.3389/fmicb.2017.01988>
- Barata A, Malfeito-Ferreira M, Loureiro V (2012) The microbial ecology of wine grape berries. *International Journal of Food Microbiology*, **153**, 243–59. <https://doi.org/10.1016/j.ijfoodmicro.2011.11.025>
- Bardi L, Cocito C, Marzona M (1999) *Saccharomyces cerevisiae* cell fatty acid composition and release during fermentation without aeration and in absence of exogenous lipids. *International Journal of Food Microbiology*, **47**, 133–140. [https://doi.org/10.1016/S0168-1605\(98\)00203-7](https://doi.org/10.1016/S0168-1605(98)00203-7)
- Barry M-A, Thieffry S, Gomes De Faria C, Thebault E, Pédrón J (2024) Bacterial pathogens dynamic during multi-species infections. *Peer Community Journal*, **4**, e49. <https://doi.org/10.24072/pcjournal.418>
- Bauer FF, Pretorius IS (2000) Yeast Stress Response and Fermentation Efficiency: How to Survive the Making of Wine - A Review. *South African Journal of Enology & Viticulture*, **21**. <https://doi.org/10.21548/21-1-3557>
- Belda I, Navascués E, Marquina D, Santos A, Calderon F, Benito S (2015) Dynamic analysis of physiological properties of *Torulaspota delbrueckii* in wine fermentations and its incidence on wine quality. *Applied Microbiology and Biotechnology*, **99**, 1911–1922. <https://doi.org/10.1007/s00253-014-6197-2>
- Bely M, Sablayrolles J-M, Barre P (1990) Automatic detection of assimilable nitrogen deficiencies during alcoholic fermentation in oenological conditions. *Journal of Fermentation and Bioengineering*, **70**, 246–252. [https://doi.org/10.1016/0922-338X\(90\)90057-4](https://doi.org/10.1016/0922-338X(90)90057-4)
- Bely M, Stoeckle P, Masneuf-Pomarède I, Dubourdiou D (2008) Impact of mixed *Torulaspota delbrueckii*–*Saccharomyces cerevisiae* culture on high-sugar fermentation. *International Journal of Food Microbiology*, **122**, 312–320. <https://doi.org/10.1016/j.ijfoodmicro.2007.12.023>
- Benito S, Hofmann T, Laier M, Lochbühler B, Schüttler A, Ebert K, Fritsch S, Röcker J, Rauhut D (2015) Effect on quality and composition of Riesling wines fermented by sequential inoculation with non-*Saccharomyces* and *Saccharomyces cerevisiae*. *European Food Research and Technology*, **241**, 707–717. <https://doi.org/10.1007/s00217-015-2497-8>

- Binati RL, Lemos Junior WJF, Luzzini G, Slaghenaufi D, Ugliano M, Torriani S (2020) Contribution of non-Saccharomyces yeasts to wine volatile and sensory diversity: A study on Lachancea thermotolerans, Metschnikowia spp. and Starmerella bacillaris strains isolated in Italy. *International Journal of Food Microbiology*, **318**, 108470. <https://doi.org/10.1016/j.ijfoodmicro.2019.108470>
- Blasche S, Kim Y, Oliveira AP, Patil KR (2017) Model microbial communities for ecosystems biology. *Current Opinion in Systems Biology*, **6**, 51–57. <https://doi.org/10.1016/j.coisb.2017.09.002>
- Bock A, Sparks TH, Estrella N, Menzel A (2013) Climate-Induced Changes in Grapevine Yield and Must Sugar Content in Franconia (Germany) between 1805 and 2010 (JP Hart, Ed.). *PLoS ONE*, **8**, e69015. <https://doi.org/10.1371/journal.pone.0069015>
- Bokulich NA, Thorngate JH, Richardson PM, Mills DA (2014) Microbial biogeography of wine grapes is conditioned by cultivar, vintage, and climate. *Proceedings of the National Academy of Sciences of the United States of America*, **111**, 139–48. <https://doi.org/10.1073/pnas.1317377110>
- Bordet F, Joran A, Klein G, Roullier-Gall C, Alexandre H (2020) Yeast-Yeast Interactions: Mechanisms, Methodologies and Impact on Composition. *Microorganisms*, **8**. <https://doi.org/10.3390/microorganisms8040600>
- Boynton PJ, Greig D (2016) Species richness influences wine ecosystem function through a dominant species. *Fungal Ecology*, **22**, 61–72. <https://doi.org/10.1016/j.funeco.2016.04.008>
- Breslow DK, Cameron DM, Collins SR, Schuldiner M, Stewart-Ornstein J, Newman HW, Braun S, Madhani HD, Krogan NJ, Weissman JS (2008) A comprehensive strategy enabling high-resolution functional analysis of the yeast genome. *Nature Methods*, **5**, 711–718. <https://doi.org/10.1038/nmeth.1234>
- Brückner S, Schubert R, Kraushaar T, Hartmann R, Hoffmann D, Jelli E, Drescher K, Müller DJ, Oliver Essen L, Mösch H-U (2020) Kin discrimination in social yeast is mediated by cell surface receptors of the Flo11 adhesin family. *eLife*, **9**. <https://doi.org/10.7554/eLife.55587>
- Calabrese FM, Ameer H, Nikoloudaki O, Celano G, Vacca M, Junior WJfl, Manzari C, Vertè F, Di Cagno R, Pesole G, De Angelis M, Gobetti M (2022) Metabolic framework of spontaneous and synthetic sourdough metacommunities to reveal microbial players responsible for resilience and performance. *Microbiome*, **10**, 148. <https://doi.org/10.1186/s40168-022-01301-3>
- Capece A, Fiore C, Maraz A, Romano P (2005) Molecular and technological approaches to evaluate strain biodiversity in Hanseniaspora uvarum of wine origin. *Journal of Applied Microbiology*, **98**, 136–144. <https://doi.org/10.1111/j.1365-2672.2004.02434.x>
- Cardinale BJ (2011) Biodiversity improves water quality through niche partitioning. *Nature*, **472**, 86–89. <https://doi.org/10.1038/nature09904>
- Chasseriaud L, Coulon J, Marullo P, Albertin W, Bely M (2018) New oenological practice to promote non-Saccharomyces species of interest: saturating grape juice with carbon dioxide. *Applied Microbiology and Biotechnology*, **102**, 3779–3791. <https://doi.org/10.1007/s00253-018-8861-4>
- Ciani M, Comitini F (2015) Yeast interactions in multi-starter wine fermentation. *Current Opinion in Food Science*, **1**, 1–6. <https://doi.org/10.1016/j.cofs.2014.07.001>
- Ciani M, Maccarelli F (1998) Oenological properties of non-Saccharomyces yeasts associated with wine-making. *World Journal of Microbiology and Biotechnology*, **14**. <https://doi.org/10.1023/A:1008825928354>
- Combina M, Elía A, Mercado L, Catania C, Ganga A, Martinez C (2005) Dynamics of indigenous yeast populations during spontaneous fermentation of wines from Mendoza, Argentina. *International Journal of Food Microbiology*, **99**, 237–243. <https://doi.org/10.1016/j.ijfoodmicro.2004.08.017>
- Comitini F, Gobbi M, Domizio P, Romani C, Lencioni L, Mannazzu I, Ciani M (2011) Selected non-Saccharomyces wine yeasts in controlled multistarter fermentations with Saccharomyces cerevisiae. *Food Microbiology*, **28**, 873–882. <https://doi.org/10.1016/j.fm.2010.12.001>
- Conacher CG, Naidoo-Blassoples RK, Rossouw D, Bauer FF (2020) Real-time monitoring of population dynamics and physical interactions in a synthetic yeast ecosystem by use of multicolour flow cytometry. *Applied microbiology and biotechnology*, **104**, 5547–5562. <https://doi.org/10.1007/s00253-020-10607-x>
- Conacher CG, Naidoo-Blassoples RK, Rossouw D, Bauer FF (2022) A Transcriptomic Analysis of Higher-Order Ecological Interactions in a Eukaryotic Model Microbial Ecosystem (SG Tringe, Ed.). *mSphere*, **7**, e00436-22. <https://doi.org/10.1128/msphere.00436-22>

- Conacher CG, Watson BW, Bauer FF (2024) Gradient boosted regression as a tool to reveal key drivers of temporal dynamics in a synthetic yeast community. *FEMS Microbiology Ecology*, fiae080. <https://doi.org/10.1093/femsec/fiae080>
- Contreras A, Curtin C, Varela C (2015) Yeast population dynamics reveal a potential ‘collaboration’ between *Metschnikowia pulcherrima* and *Saccharomyces uvarum* for the production of reduced alcohol wines during Shiraz fermentation. *Applied Microbiology and Biotechnology*, **99**, 1885–1895. <https://doi.org/10.1007/s00253-014-6193-6>
- Csoma H, Kállai Z, Antunovics Z, Czentye K, Sipiczki M (2020) Vinification without *Saccharomyces*: Interacting Osmotolerant and “Spoilage” Yeast Communities in Fermenting and Ageing Botrytised High-Sugar Wines (Tokaj Essence). *Microorganisms*, **9**, 19. <https://doi.org/10.3390/microorganisms9010019>
- Cubillos F (2024) Yeast consortium for novel wine fermentations. *Peer Community in Microbiology*. <https://doi.org/10.24072/pci.microbiol.100118>
- De Roy K, Marzorati M, van den Abbeele P, van de Wiele T, Boon N (2014) Synthetic microbial ecosystems: an exciting tool to understand and apply microbial communities. *Environmental microbiology*, **16**, 1472–81. <https://doi.org/10.1111/1462-2920.12343>
- De Roy K, Marzorati M, Negróni A, Thas O, Balloi A, Fava F, Verstraete W, Daffonchio D, Boon N (2013) Environmental conditions and community evenness determine the outcome of biological invasion. *Nature Communications*, **4**, 1383. <https://doi.org/10.1038/ncomms2392>
- Deroite A, Legras J-L, Rigou P, Ortiz-Julien A, Dequin S (2018) Lipids modulate acetic acid and thiol final concentrations in wine during fermentation by *Saccharomyces cerevisiae* × *Saccharomyces kudriavzevii* hybrids. *AMB Express*, **8**, 130. <https://doi.org/10.1186/s13568-018-0657-5>
- Di Maro E, Ercolini D, Coppola S (2007) Yeast dynamics during spontaneous wine fermentation of the Catalanesca grape. *International Journal of Food Microbiology*, **117**, 201–210. <https://doi.org/10.1016/j.ijfoodmicro.2007.04.007>
- Díaz C, Molina AM, Nähring J, Fischer R (2013) Characterization and dynamic behavior of wild yeast during spontaneous wine fermentation in steel tanks and amphorae. *BioMed research international*, **2013**, 540465. <https://doi.org/10.1155/2013/540465>
- Drumonde-Neves J, Fernandes T, Lima T, Pais C, Franco-Duarte R (2021) Learning from 80 years of studies: a comprehensive catalogue of non-*Saccharomyces* yeasts associated with viticulture and winemaking. *FEMS yeast research*, **21**, foab017. <https://doi.org/10.1093/femsyr/foab017>
- Dunham MJ (2007) Synthetic ecology: A model system for cooperation. *Proceedings of the National Academy of Sciences*, **104**, 1741–1742. <https://doi.org/10.1073/pnas.0611067104>
- Englezos V, Cocolin L, Rantsiou K, Ortiz-Julien A, Bloem A, Dequin S, Camarasa C (2018) Specific Phenotypic Traits of *Starmerella bacillaris* Related to Nitrogen Source Consumption and Central Carbon Metabolite Production during Wine Fermentation. *Applied and environmental microbiology*, **84**. <https://doi.org/10.1128/AEM.00797-18>
- Englezos V, Rantsiou K, Giacosa S, Río Segade S, Rolle L, Cocolin L (2019) Cell-to-cell contact mechanism modulates *Starmerella bacillaris* death in mixed culture fermentations with *Saccharomyces cerevisiae*. *International Journal of Food Microbiology*, **289**, 106–114. <https://doi.org/10.1016/j.ijfoodmicro.2018.09.009>
- Ferreira D, Galeote V, Sanchez I, Legras J-L, Ortiz-Julien A, Dequin S (2017) Yeast multistress resistance and lag-phase characterisation during wine fermentation. *FEMS Yeast Research*, **17**. <https://doi.org/10.1093/femsyr/fox051>
- Furukawa S, Watanabe T, Toyama H, Morinaga Y (2013) Significance of microbial symbiotic coexistence in traditional fermentation. *Journal of bioscience and bioengineering*, **116**, 533–9. <https://doi.org/10.1016/j.jbiosc.2013.05.017>
- Gambetta GA, Kurtural SK (2021) Global warming and wine quality: are we close to the tipping point? *OENO One*, **55**, 353–361. <https://doi.org/10.20870/oenone.2021.55.3.4774>
- Ghosh S, Bagheri B, Morgan HH, Divol B, Setati ME (2015) Assessment of wine microbial diversity using ARISA and cultivation-based methods. *Annals of Microbiology*, **65**, 1833–1840. <https://doi.org/10.1007/s13213-014-1021-x>
- Gibson DG, Young L, Chuang R-Y, Venter JC, Hutchison CA, Smith HO (2009) Enzymatic assembly of DNA molecules up to several hundred kilobases. *Nature Methods*, **6**, 343–345. <https://doi.org/10.1038/nmeth.1318>

- Giri S, Oña L, Waschina S, Shitut S, Yousif G, Kaleta C, Kost C (2021) Metabolic dissimilarity determines the establishment of cross-feeding interactions in bacteria. *Current biology: CB*, **31**, 5547–55576. <https://doi.org/10.1016/j.cub.2021.10.019>
- Goddard MR (2008) Quantifying the Complexities of *Saccharomyces Cerevisiae*'s Ecosystem Engineering Via Fermentation. *Ecology*, **89**, 2077–2082. <https://doi.org/10.1890/07-2060.1>
- González-Alonso I, Walker ME, Vallejo-Pascual M-E, Naharro-Carrasco G, Jiranek V (2021) Capturing yeast associated with grapes and spontaneous fermentations of the Negro Saurí minority variety from an experimental vineyard near León. *Scientific reports*, **11**, 3748. <https://doi.org/10.1038/s41598-021-83123-1>
- González-Royo E, Pascual O, Kontoudakis N, Esteruelas M, Esteve-Zarzoso B, Mas A, Canals JM, Zamora F (2015) Oenological consequences of sequential inoculation with non-*Saccharomyces* yeasts (*Torulaspora delbrueckii* or *Metschnikowia pulcherrima*) and *Saccharomyces cerevisiae* in base wine for sparkling wine production. *European Food Research and Technology*, **240**, 999–1012. <https://doi.org/10.1007/s00217-014-2404-8>
- Gordon ZB, Soltysiak MPM, Leichthammer C, Therrien JA, Meaney RS, Lauzon C, Adams M, Lee DK, Janakirama P, Lachance M-A, Karas BJ (2019) Development of a Transformation Method for *Metschnikowia borealis* and other CUG-Serine Yeasts. *Genes*, **10**. <https://doi.org/10.3390/genes10020078>
- Grangeteau C, Roullier-Gall C, Rousseaux S, Gougeon RD, Schmitt-Kopplin P, Alexandre H, Guilloux-Benatier M (2017) Wine microbiology is driven by vineyard and winery anthropogenic factors. *Microbial biotechnology*, **10**, 354–370. <https://doi.org/10.1111/1751-7915.12428>
- Hansen MC, Palmer RJ, Udsen C, White DC, Molin S (2001) Assessment of GFP fluorescence in cells of *Streptococcus gordonii* under conditions of low pH and low oxygen concentration. *Microbiology*, **147**, 1383–1391. <https://doi.org/10.1099/00221287-147-5-1383>
- Harlé O, Legrand J, Tesnière C, Pradal M, Mouret J-R, Nidelet T (2020) Investigations of the mechanisms of interactions between four non-conventional species with *Saccharomyces cerevisiae* in oenological conditions (Y Ohya, Ed.). *PLOS ONE*, **15**, e0233285. <https://doi.org/10.1371/journal.pone.0233285>
- Heard GM, Fleet GH (1988) The effects of temperature and pH on the growth of yeast species during the fermentation of grape juice. *Journal of Applied Bacteriology*, **65**, 23–28. <https://doi.org/10.1111/j.1365-2672.1988.tb04312.x>
- Hernandez-Lopez MJ, Prieto JA, Randez-Gil F (2003) Osmotolerance and leavening ability in sweet and frozen sweet dough. Comparative analysis between *Torulaspora delbrueckii* and *Saccharomyces cerevisiae* baker's yeast strains. *Antonie van Leeuwenhoek*, **84**, 125–134. <https://doi.org/10.1023/a:1025413520192>
- Hierro N, González A, Mas A, Guillamón JM (2006) Diversity and evolution of non-*Saccharomyces* yeast populations during wine fermentation: effect of grape ripeness and cold maceration. *FEMS Yeast Research*, **6**, 102–111. <https://doi.org/10.1111/j.1567-1364.2005.00014.x>
- Holm Hansen E, Nissen P, Sommer P, Nielsen JC, Arneborg N (2001) The effect of oxygen on the survival of non-*Saccharomyces* yeasts during mixed culture fermentations of grape juice with *Saccharomyces cerevisiae*. *Journal of Applied Microbiology*, **91**, 541–547. <https://doi.org/10.1046/j.1365-2672.2001.01426.x>
- Hooper D, Chapin F, Ewel J, Hector A, Inchausti P, Lavorel S, Lawton J, Lodge D, Loreau M, Naem S, Schmid B, Setälä H, Symstad A, Vandermeer J, Wardle D (2005) EFFECTS OF BIODIVERSITY ON ECOSYSTEM FUNCTIONING: A CONSENSUS OF CURRENT KNOWLEDGE. *Ecol Monogr*, **75**, 3–35. <https://doi.org/10.1890/04-0922>
- Ivey M, Massel M, Phister TG (2013) Microbial interactions in food fermentations. *Annual review of food science and technology*, **4**, 141–62. <https://doi.org/10.1146/annurev-food-022811-101219>
- Kapsopoulou K, Kapaklis A, Spyropoulos H (2005) Growth and Fermentation Characteristics of a Strain of the Wine Yeast *Kluyveromyces thermotolerans* Isolated in Greece. *World Journal of Microbiology and Biotechnology*, **21**, 1599–1602. <https://doi.org/10.1007/s11274-005-8220-3>
- Kassambara A (2023) *rstatix: Pipe-Friendly Framework for Basic Statistical Tests*.
- Kehe J, Kulesa A, Ortiz A, Ackerman CM, Thakku SG, Sellers D, Kuehn S, Gore J, Friedman J, Blainey PC (2019) Massively parallel screening of synthetic microbial communities. *Proceedings of the National Academy of Sciences*, **116**, 12804–12809. <https://doi.org/10.1073/pnas.1900102116>

- Kemsawasd V, Viana T, Ardö Y, Arneborg N (2015) Influence of nitrogen sources on growth and fermentation performance of different wine yeast species during alcoholic fermentation. *Applied Microbiology and Biotechnology*, **99**, 10191–10207. <https://doi.org/10.1007/s00253-015-6835-3>
- Kylilis N, Tuza ZA, Stan G-B, Polizzi KM (2018) Tools for engineering coordinated system behaviour in synthetic microbial consortia. *Nature Communications*, **9**, 2677. <https://doi.org/10.1038/s41467-018-05046-2>
- Lages F, Silva-Graça M, Lucas C (1999) Active glycerol uptake is a mechanism underlying halotolerance in yeasts: a study of 42 species. *Microbiology*, **145**, 2577–2585. <https://doi.org/10.1099/00221287-145-9-2577>
- Lambrechts MG, Pretorius IS (2000) Yeast and its importance to wine aroma—a review. *South african journal of enology and viticulture*, **21**, 97–129. <https://doi.org/10.21548/21-1-3560>
- Lax S, Gore J (2023) Strong ethanol- and frequency-dependent ecological interactions in a community of wine-fermenting yeasts. *Communications Biology*, **6**, 939. <https://doi.org/10.1038/s42003-023-05284-1>
- Lee S, Lim WA, Thorn KS (2013) Improved Blue, Green, and Red Fluorescent Protein Tagging Vectors for *S. cerevisiae* (AS Gladfelter, Ed.). *PLoS ONE*, **8**, e67902. <https://doi.org/10.1371/journal.pone.0067902>
- Lleixà J, Manzano M, Mas A, Portillo MDC (2016) Saccharomyces and non-Saccharomyces Competition during Microvinification under Different Sugar and Nitrogen Conditions. *Frontiers in Microbiology*, **7**. <https://doi.org/10.3389/fmicb.2016.01959>
- Longin C, Petitgonnet C, Guilloux-Benatier M, Rousseaux S, Alexandre H (2017) Application of flow cytometry to wine microorganisms. *Food Microbiology*, **62**, 221–231. <https://doi.org/10.1016/j.fm.2016.10.023>
- Louw NL, Lele K, Ye R, Edwards CB, Wolfe BE (2023) Microbiome Assembly in Fermented Foods. *Annual Review of Microbiology*, **77**, 381–402. <https://doi.org/10.1146/annurev-micro-032521-041956>
- Magyar I, Nyitrai-Sárdy D, Leskó A, Pomázi A, Kállay M (2014) Anaerobic organic acid metabolism of *Candida zemplinina* in comparison with *Saccharomyces* wine yeasts. *International Journal of Food Microbiology*, **178**, 1–6. <https://doi.org/10.1016/j.ijfoodmicro.2014.03.002>
- Magyar I, Soós J (2016) Botrytized wines – current perspectives. *International Journal of Wine Research*, **Volume 8**, 29–39. <https://doi.org/10.2147/IJWR.S100653>
- Marcus A, Raulet DH (2013) A simple and effective method for differentiating GFP and YFP by flow cytometry using the violet laser. *Cytometry Part A*, **83**, 973–974. <https://doi.org/10.1002/cyto.a.22347>
- Mateus D, Sousa S, Coimbra C, Rogerson F, Simões J (2020) Identification and Characterization of Non-Saccharomyces Species Isolated from Port Wine Spontaneous Fermentations. *Foods (Basel, Switzerland)*, **9**. <https://doi.org/10.3390/foods9020120>
- Maturano YP, Mestre MV, Esteve-Zarzoso B, Nally MC, Larena MC, Toro ME, Vazquez F, Combina M (2015) Yeast population dynamics during prefermentative cold soak of Cabernet Sauvignon and Malbec wines. *International Journal of Food Microbiology*, **199**, 23–32. <https://doi.org/10.1016/j.ijfoodmicro.2015.01.005>
- Mbuyane LL, Bauer FF, Bloem A, Camarasa C, Ortiz-Julien A, Divol B (2022) Species-Dependent Metabolic Response to Lipid Mixtures in Wine Yeasts. *Frontiers in microbiology*, **13**, 823581. <https://doi.org/10.3389/fmicb.2022.823581>
- Medina K, Boido E, Dellacassa E, Carrau F (2012) Growth of non-Saccharomyces yeasts affects nutrient availability for *Saccharomyces cerevisiae* during wine fermentation. *International Journal of Food Microbiology*, **157**, 245–50. <https://doi.org/10.1016/j.ijfoodmicro.2012.05.012>
- Mee MT, Collins JJ, Church GM, Wang HH (2014) Syntrophic exchange in synthetic microbial communities. *Proceedings of the National Academy of Sciences of the United States of America*, **111**, 2149–56. <https://doi.org/10.1073/pnas.1405641111>
- Mencher A, Morales P, Curiel JA, Gonzalez R, Tronchoni J (2021) Mencher, Ana, Pilar Morales, José A. Curiel, Ramón Gonzalez, and Jordi Tronchoni. “[Copie] Metschnikowia Pulcherrima Represses Aerobic Respiration in *Saccharomyces Cerevisiae* Suggesting a Direct Response to Co-Cultivation.” *Food Microbiology* 94 (January 1, 2021): 103670. <https://doi.org/10.1016/j.fm.2020.103670>. *Food microbiology*, **94**, 103670. <https://doi.org/10.1016/j.fm.2020.103670>

- Mendoza LM, Vega-Lopez GA, Fernández de Ullivarri M, Raya RR (2019) Population and oenological characteristics of non-Saccharomyces yeasts associated with grapes of Northwestern Argentina. *Archives of Microbiology*, **201**, 235–244. <https://doi.org/10.1007/s00203-018-1601-4>
- Minty JJ, Singer ME, Scholz SA, Bae C-H, Ahn J-H, Foster CE, Liao JC, Lin XN (2013) Design and characterization of synthetic fungal-bacterial consortia for direct production of isobutanol from cellulosic biomass. *Proceedings of the National Academy of Sciences of the United States of America*, **110**, 14592–7. <https://doi.org/10.1073/pnas.1218447110>
- Moenne MI, Saa P, Laurie VF, Pérez-Correa JR, Agosin E (2014) Oxygen Incorporation and Dissolution During Industrial-Scale Red Wine Fermentations. *Food and Bioprocess Technology*, **7**, 2627–2636. <https://doi.org/10.1007/s11947-014-1257-2>
- Morales P, Rojas V, Quirós M, Gonzalez R (2015) The impact of oxygen on the final alcohol content of wine fermented by a mixed starter culture. *Applied Microbiology and Biotechnology*, **99**, 3993–4003. <https://doi.org/10.1007/s00253-014-6321-3>
- Moreno-Beltrán M, Gore-Lloyd D, Chuck C, Henk D (2021) Variation among *Metschnikowia pulcherrima* Isolates for Genetic Modification and Homologous Recombination. *Microorganisms*, **9**, 290. <https://doi.org/10.3390/microorganisms9020290>
- Nisiotou AA, Spiropoulos AE, Nychas G-JE (2007) Yeast community structures and dynamics in healthy and Botrytis-affected grape must fermentations. *Applied and environmental microbiology*, **73**, 6705–13. <https://doi.org/10.1128/AEM.01279-07>
- Nissen P, Nielsen D, Arneborg N (2003) Viable *Saccharomyces cerevisiae* cells at high concentrations cause early growth arrest of non-Saccharomyces yeasts in mixed cultures by a cell-cell contact-mediated mechanism. *Yeast*, **20**, 331–341. <https://doi.org/10.1002/yea.965>
- Ocón E, Gutiérrez AR, Garijo P, Tenorio C, López I, López R, Santamaría P (2010) Quantitative and qualitative analysis of non-Saccharomyces yeasts in spontaneous alcoholic fermentations. *European Food Research and Technology*, **230**, 885–891. <https://doi.org/10.1007/s00217-010-1233-7>
- Onetto CA, Borneman AR, Schmidt SA (2021) Strain-Specific Responses by *Saccharomyces cerevisiae* to Competition by Non-Saccharomyces Yeasts. *Fermentation*, **7**, 165. <https://doi.org/10.3390/fermentation7030165>
- Peng B, Williams TC, Henry M, Nielsen LK, Vickers CE (2015) Controlling heterologous gene expression in yeast cell factories on different carbon substrates and across the diauxic shift: a comparison of yeast promoter activities. *Microbial cell factories*, **14**, 91. <https://doi.org/10.1186/s12934-015-0278-5>
- Peter J, De Chiara M, Friedrich A, Yue J-X, Pflieger D, Bergström A, Sigwalt A, Barre B, Freil K, Llored A, Cruaud C, Labadie K, Aury J-M, Istace B, Lebrigand K, Barbry P, Engelen S, Lemainque A, Wincker P, Liti G, Schacherer J (2018) Genome evolution across 1,011 *Saccharomyces cerevisiae* isolates. *Nature*, **556**, 339–344. <https://doi.org/10.1038/s41586-018-0030-5>
- Petitgonnet C, Klein GL, Roullier-Gall C, Schmitt-Kopplin P, Quintanilla-Casas B, Vichi S, Julien-David D, Alexandre H (2019) Influence of cell-cell contact between *L. thermotolerans* and *S. cerevisiae* on yeast interactions and the exo-metabolome. *Food microbiology*, **83**, 122–133. <https://doi.org/10.1016/j.fm.2019.05.005>
- Ponomarova O, Patil KR (2015) Metabolic interactions in microbial communities: untangling the Gordian knot. *Current Opinion in Microbiology*, **27**, 37–44. <https://doi.org/10.1016/j.mib.2015.06.014>
- Pourcelot E, Audrey V, Marlin T, Galeote V, Nidelet T (2024) Supplementary data and Scripts of “Design of a new model yeast consortium for ecological studies of enological fermentation.” *Zenodo*. <https://doi.org/10.5281/zenodo.11120745>
- Pourcelot E, Conacher C, Marlin T, Bauer F, Galeote V, Nidelet T (2023) Comparing the hierarchy of inter- and intraspecies interactions with population dynamics of wine yeast cocultures. *FEMS Yeast Research*, foad039. <https://doi.org/10.1093/femsyr/foad039>
- Puig S, Pérez-Ortín JE (2000) Expression Levels and Patterns of Glycolytic Yeast Genes During Wine Fermentation. *Systematic and Applied Microbiology*, **23**, 300–303. [https://doi.org/10.1016/S0723-2020\(00\)80018-1](https://doi.org/10.1016/S0723-2020(00)80018-1)
- R Core Team (2024) *R: a language and environment for statistical computing*. R Foundation for Statistical Computing, Vienna, Austria.
- Radler F (1993) Chapter 5: Metabolism of organic acids. In: *Wine Microbiology and Biotechnology*, p. 173. G. H. Fleet (Ed), CRC Press, Taylor & Francis.

- Rantsiou K, Dolci P, Giacosa S, Torchio F, Tofalo R, Torriani S, Suzzi G, Rolle L, Cocolin L (2012) Candida zemplinina Can Reduce Acetic Acid Produced by Saccharomyces cerevisiae in Sweet Wine Fermentations. *Applied and Environmental Microbiology*, **78**, 1987–1994. <https://doi.org/10.1128/AEM.06768-11>
- Ratzke C, Barrere J, Gore J (2020) Strength of species interactions determines biodiversity and stability in microbial communities. *Nature Ecology & Evolution*, **4**, 376–383. <https://doi.org/10.1038/s41559-020-1099-4>
- Renault PE, Albertin W, Bely M (2013) An innovative tool reveals interaction mechanisms among yeast populations under oenological conditions. *Applied Microbiology and Biotechnology*, **97**, 4105–4119. <https://doi.org/10.1007/s00253-012-4660-5>
- Renault P, Miot-Sertier C, Marullo P, Hernández-Orte P, Lagarrigue L, Lonvaud-Funel A, Bely M (2009) Genetic characterization and phenotypic variability in Torulaspora delbrueckii species: Potential applications in the wine industry. *International Journal of Food Microbiology*, **134**, 201–10. <https://doi.org/10.1016/j.ijfoodmicro.2009.06.008>
- Rigottier-Gois L, Le Bourhis A-G, Geneviève G, Rochet V, Doré J (2003) Fluorescent hybridisation combined with flow cytometry and hybridisation of total RNA to analyse the composition of microbial communities in human faeces using 16S rRNA probes. *FEMS Microbiology Ecology*, **43**, 237–245. <https://doi.org/10.1111/j.1574-6941.2003.tb01063.x>
- Roudil L, Russo P, Berbegal C, Albertin W, Spano G, Capozzi V (2020) Non-Saccharomyces Commercial Starter Cultures: Scientific Trends, Recent Patents and Innovation in the Wine Sector. *Recent patents on food, nutrition & agriculture*, **11**, 27–39. <https://doi.org/10.2174/2212798410666190131103713>
- Rué O, Coton M, Dugat-Bony E, Howell K, Irlinger F, Legras J-L, Loux V, Michel E, Mounier J, Neuvéglise C, Sicard D (2023) Comparison of metabarcoding taxonomic markers to describe fungal communities in fermented foods. *Peer Community Journal*, **3**, e97. <https://doi.org/10.24072/pcjournal.321>
- Ruiz J, de Celis M, Diaz-Colunga J, Vila JC, Benitez-Dominguez B, Vicente J, Santos A, Sanchez A, Belda I (2023) Predictability of the community-function landscape in wine yeast ecosystems. *Molecular Systems Biology*, **n/a**, e11613. <https://doi.org/10.15252/msb.202311613>
- Sablaylorlles JM (2009) Control of alcoholic fermentation in winemaking: Current situation and prospect. *Food Research International*, **42**, 418–424. <https://doi.org/10.1016/j.foodres.2008.12.016>
- Schmidt SA, Kolouchova R, Forgan AH, Borneman AR (2020) Evaluation of Saccharomyces cerevisiae Wine Yeast Competitive Fitness in Enologically Relevant Environments by Barcode Sequencing. *G3 (Bethesda, Md.)*, **10**, 591–603. <https://doi.org/10.1534/g3.119.400743>
- Seguinot P, Ortiz-Julien A, Camarasa C (2020) Impact of Nutrient Availability on the Fermentation and Production of Aroma Compounds Under Sequential Inoculation With M. pulcherrima and S. cerevisiae. *Frontiers in microbiology*, **11**, 305. <https://doi.org/10.3389/fmicb.2020.00305>
- Shade A, Peter H, Allison SD, Baho DL, Berga M, Bürgmann H, Huber DH, Langenheder S, Lennon JT, Martiny JBH, Matulich KL, Schmidt TM, Handelsman J (2012) Fundamentals of microbial community resistance and resilience. *Frontiers in microbiology*, **3**, 417. <https://doi.org/10.3389/fmicb.2012.00417>
- Sheff MA, Thorn KS (2004) Optimized cassettes for fluorescent protein tagging in Saccharomyces cerevisiae. *Yeast*, **21**, 661–670. <https://doi.org/10.1002/yea.1130>
- Shong J, Jimenez Diaz MR, Collins CH (2012) Towards synthetic microbial consortia for bioprocessing. *Current opinion in biotechnology*, **23**, 798–802. <https://doi.org/10.1016/j.copbio.2012.02.001>
- Simonin S, Alexandre H, Nikolantonaki M, Coelho C, Tourdot-Maréchal R (2018) Inoculation of Torulaspora delbrueckii as a bio-protection agent in winemaking. *Food research international (Ottawa, Ont.)*, **107**, 451–461. <https://doi.org/10.1016/j.foodres.2018.02.034>
- Sternes PR, Lee D, Kutyna DR, Borneman AR (2017) A combined meta-barcoding and shotgun metagenomic analysis of spontaneous wine fermentation. *GigaScience*, **6**, 1–10. <https://doi.org/10.1093/gigascience/gix040>
- Taillandier P, Lai QP, Julien-Ortiz A, Brandam C (2014) Interactions between Torulaspora delbrueckii and Saccharomyces cerevisiae in wine fermentation: influence of inoculation and nitrogen content. *World journal of microbiology & biotechnology*, **30**, 1959–67. <https://doi.org/10.1007/s11274-014-1618-z>
- Tamang JP, Watanabe K, Holzapfel WH (2016) Review: Diversity of Microorganisms in Global Fermented Foods and Beverages. *Frontiers in Microbiology*, **7**. <https://doi.org/10.3389/fmicb.2016.00377>

- Tofalo R, Schirone M, Torriani S, Rantsiou K, Cocolin L, Perpetuini G, Suzzi G (2012) Diversity of *Candida zemplinina* strains from grapes and Italian wines. *Food microbiology*, **29**, 18–26. <https://doi.org/10.1016/j.fm.2011.08.014>
- Tourlousse DM, Narita K, Miura T, Sakamoto M, Ohashi A, Shiina K, Matsuda M, Miura D, Shimamura M, Ohyama Y, Yamazoe A, Uchino Y, Kameyama K, Arioka S, Kataoka J, Hisada T, Fujii K, Takahashi S, Kuroiwa M, Rokushima M, Nishiyama M, Tanaka Y, Fuchikami T, Aoki H, Kira S, Koyanagi R, Naito T, Nishiwaki M, Kumagai H, Konda M, Kasahara K, Ohkuma M, Kawasaki H, Sekiguchi Y, Terauchi J (2021) Validation and standardization of DNA extraction and library construction methods for metagenomics-based human fecal microbiome measurements. *Microbiome*, **9**, 95. <https://doi.org/10.1186/s40168-021-01048-3>
- Vaquero C, Loira I, Bañuelos MA, Heras JM, Cuerda R, Morata A (2020) Industrial Performance of Several *Lachancea thermotolerans* Strains for pH Control in White Wines from Warm Areas. *Microorganisms*, **8**. <https://doi.org/10.3390/microorganisms8060830>
- Varela C, Cuijvers K, van den Heuvel S, Rullo M, Solomon M, Borneman A, Schmidt S (2021) Effect of Aeration on Yeast Community Structure and Volatile Composition in Uninoculated Chardonnay Wines. *Fermentation*, **7**, 97. <https://doi.org/10.3390/fermentation7020097>
- van de Velde CC, Joseph C, Biclôt A, Huys GRB, Pinheiro VB, Bernaerts K, Raes J, Faust K (2022) Fast quantification of gut bacterial species in cocultures using flow cytometry and supervised classification. *ISME Communications*, **2**. <https://doi.org/10.1038/s43705-022-00123-6>
- Venturelli OS, Carr AC, Fisher G, Hsu RH, Lau R, Bowen BP, Hromada S, Northen T, Arkin AP (2018) Deciphering microbial interactions in synthetic human gut microbiome communities. *Molecular Systems Biology*, **14**, 8157. <https://doi.org/10.15252/msb.20178157>
- Vrancken G, Gregory AC, Huys GRB, Faust K, Raes J (2019) Synthetic ecology of the human gut microbiota. *Nature reviews. Microbiology*, **17**, 754–763. <https://doi.org/10.1038/s41579-019-0264-8>
- Wang C, Mas A, Esteve-Zarzoso B (2016) The Interaction between *Saccharomyces cerevisiae* and Non-*Saccharomyces* Yeast during Alcoholic Fermentation Is Species and Strain Specific. *Frontiers in microbiology*, **7**, 502. <https://doi.org/10.3389/fmicb.2016.00502>
- Williams KM, Liu P, Fay JC (2015) Evolution of ecological dominance of yeast species in high-sugar environments. *Evolution*, **69**, 2079–2093. <https://doi.org/10.1111/evo.12707>
- Wittebolle L, Marzorati M, Clement L, Balloi A, Daffonchio D, Heylen K, De Vos P, Verstraete W, Boon N (2009) Initial community evenness favours functionality under selective stress. *Nature*, **458**, 623–626. <https://doi.org/10.1038/nature07840>
- Wolfe BE, Dutton RJ (2015) Fermented foods as experimentally tractable microbial ecosystems. *Cell*, **161**, 49–55. <https://doi.org/10.1016/j.cell.2015.02.034>
- Zimmer M (2002) Green Fluorescent Protein (GFP): Applications, Structure, and Related Photophysical Behavior. *Chemical Reviews*, **102**, 759–782. <https://doi.org/10.1021/cr010142r>
- Zott K, Miot-Sertier C, Claisse O, Lonvaud-Funel A, Masneuf-Pomarede I (2008) Dynamics and diversity of non-*Saccharomyces* yeasts during the early stages in winemaking. *International Journal of Food Microbiology*, **125**, 197–203. <https://doi.org/10.1016/j.ijfoodmicro.2008.04.001>