



HAL
open science

SEARCH FOR NEW MUTATIONS IN CATTLE BY SYSTEMATIC WHOLE GENOME RESEQUENCING

Mekki Boussaha, Camille Ech , Cl mentine Escouflaire, C cile Grohs, Carole Iampietro, Aur lien Capitan, Denis Milan, Christine Gaspin, S bastien Fritz, C cile Donnadi u, et al.

► **To cite this version:**

Mekki Boussaha, Camille Ech , Cl mentine Escouflaire, C cile Grohs, Carole Iampietro, et al.. SEARCH FOR NEW MUTATIONS IN CATTLE BY SYSTEMATIC WHOLE GENOME RESEQUENCING. 2 me colloque de l'infrastructure INRAE GENOMICS, Nov 2023, Bordeaux, France. . hal-04729114

HAL Id: hal-04729114

<https://hal.inrae.fr/hal-04729114v1>

Submitted on 9 Oct 2024

HAL is a multi-disciplinary open access archive for the deposit and dissemination of scientific research documents, whether they are published or not. The documents may come from teaching and research institutions in France or abroad, or from public or private research centers.

L'archive ouverte pluridisciplinaire **HAL**, est destin e au d p t et   la diffusion de documents scientifiques de niveau recherche, publi s ou non,  manant des  tablissements d'enseignement et de recherche fran ais ou  trangers, des laboratoires publics ou priv s.

Mekki Boussaha*¹, Camille Eché², Clémentine Escouflaire³, Cécile Grohs¹, Carole Iampietro², Aurélien Capitan¹, Denis Milan^{2,4}, Christine Gaspin^{5,6}, Sébastien Fritz³, Cécile Donnadiou², Didier Boichard¹

¹Université Paris-Saclay, INRAE, AgroParisTech, GABI, 78350 Jouy-en-Josas, France, ²INRAE, US 1426, GeT-PlaGe, Genotoul, France Genomique, Université Fédérale de Toulouse, Castanet-Tolosan, France, ³Eliance, 75012 Paris, France, ⁴GenPhySE, Université de Toulouse, INRAE, INPT, ENVT, Castanet-Tolosan Cedex, F-31326, France, ⁵Université Fédérale de Toulouse, INRAE, BioinfOmics, GenoToul Bioinformatics facility, 31326, Castanet-Tolosan, France, ⁶Université Fédérale de Toulouse, INRAE, MIAT, 31326, Castanet-Tolosan, France

* Corresponding author

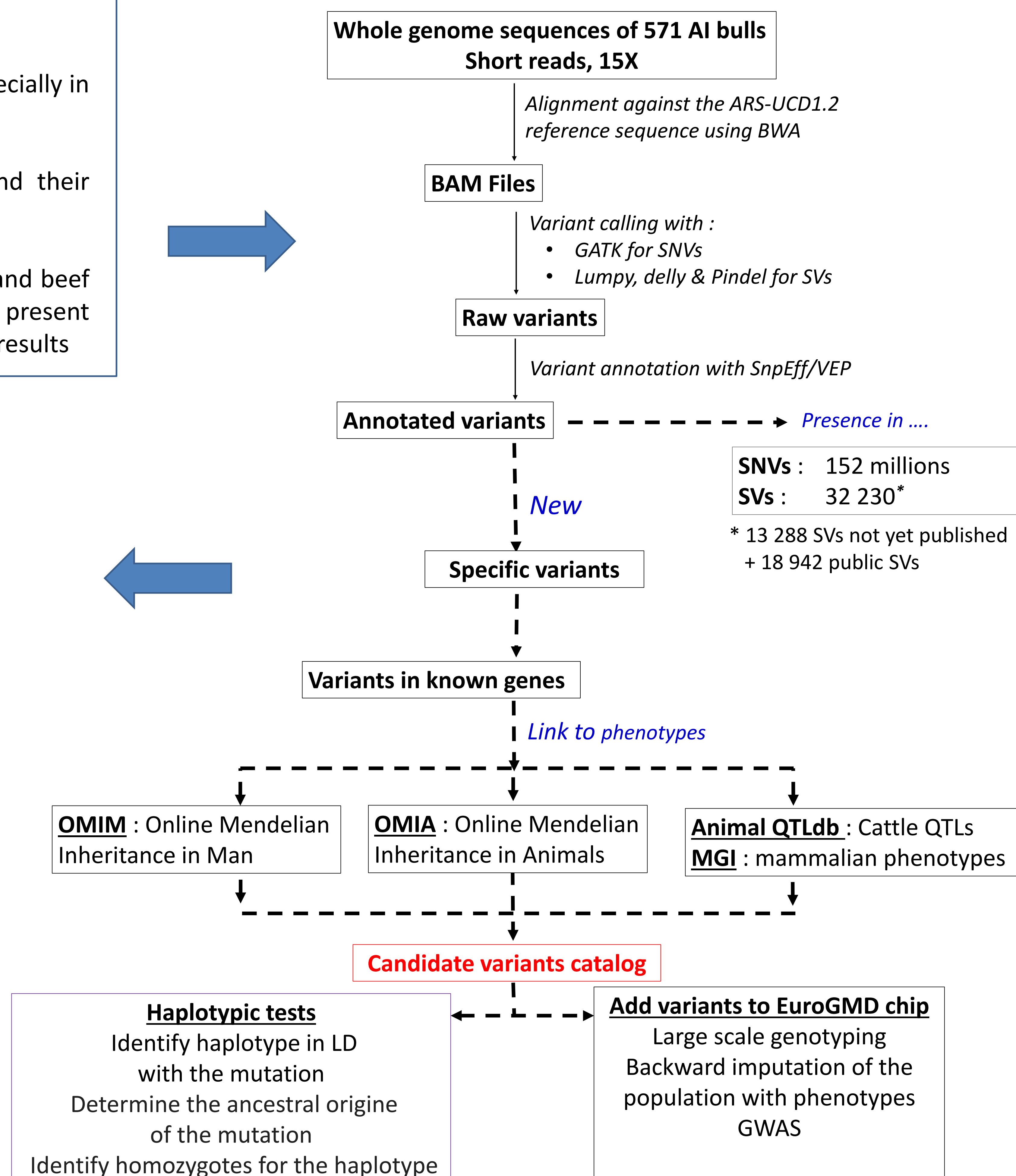
Introduction

Systematic whole genome sequencing of artificial insemination bulls presents strong advantages:

- Discovery of all genetic variants, including the rarest ones
- Improvement of imputation up to the sequence level, especially in medium size populations
- Identification of candidate variants of QTL
- Early identification of new potential genetic defects and their carriers before wide spreading in the population

As part of the SeqOccln project, 571 AI bulls from 14 dairy and beef breeds were sequenced (Illumina NovaSeq technology). We present the strategy used to reduce false positives, with some of the results

Strategy to select potentially causal novel mutations



General results

- ❖ Total # of SNVs : 34 252 085
- ❖ Novel candidate variants: 1 548
- ❖ Novel variants added into the EuroGMD chip : 1 342
- ❖ Total # of SVs : 87 216
- ❖ Novel candidate variants: 1 219
- ❖ Novel variants added into the EuroGMD chip : 874

Two examples of putative genetic defects

- ❖ ACAN: Bulldog defect, already known in Dexter
- ❖ ITGB4 : Junctional epidermolysis bullosa

Based on the severity and the certainty of these predictions, three AI bulls were culled

Several others are monitored with chip results (detection and phenotyping of homozygotes)

Study of some candidate variants on milk production

Within-sire regression coefficients

Variant	Variant type	Breed	Milk	Fat	Protein	Fat%	Prot%	Haplotype frequency
PRLR	SV	BrownSwiss	ns	**	*	***	**	2.5%
DGAT1	SNP	Abondance	***	**	ns	***	***	4.3%
SLC25A21	SNP	Montbeliarde	***	***	***	ns	ns	4.4%
BCO2	SNP		ns	**	ns	***	**	5.6%

Conclusion

- ❖ All AI bulls have a large impact in their population and are worth sequencing to fully characterize their genome
- ❖ New variants can be studied by genotyping with the chip widely used in genomic selection, by annotation, and by imputation in the population
- ❖ Here, we present a strategy to detect and characterize these new variants, while minimizing false positives
- ❖ 2 767 new variants with a strong annotation and an anticipated effect on phenotypes (abnormality or QTL)
- ❖ Large scale effect confirmation and identification of individuals of interest through SNP chip genotypes
- ❖ These variants will help to
 - anticipate the emergence of genetic defects
 - To improve accuracy and persistence of genomic predictions

Acknowledgements: The SeqOccln project was funded by the Occitanie region, FEDER, and Apis-Gene.