



HAL
open science

GBOT one flew over the ortholog's nest

Franck Samson, Sébastien Aubourg

► **To cite this version:**

Franck Samson, Sébastien Aubourg. GBOT one flew over the ortholog's nest. Jobim, Jun 2024, Toulouse, France. <hal-04831777>

HAL Id: hal-04831777

<https://hal.inrae.fr/hal-04831777v1>

Submitted on 11 Dec 2024

HAL is a multi-disciplinary open access archive for the deposit and dissemination of scientific research documents, whether they are published or not. The documents may come from teaching and research institutions in France or abroad, or from public or private research centers.

L'archive ouverte pluridisciplinaire **HAL**, est destinée au dépôt et à la diffusion de documents scientifiques de niveau recherche, publiés ou non, émanant des établissements d'enseignement et de recherche français ou étrangers, des laboratoires publics ou privés.



HAL Authorization



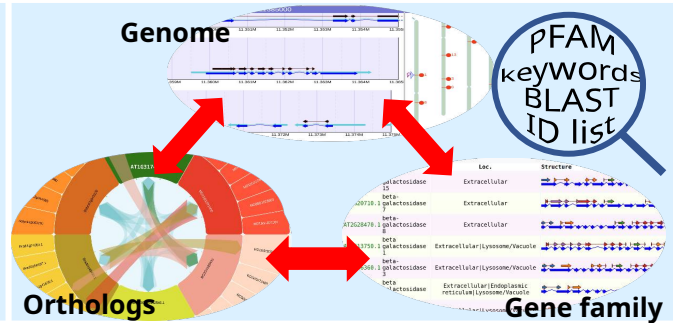
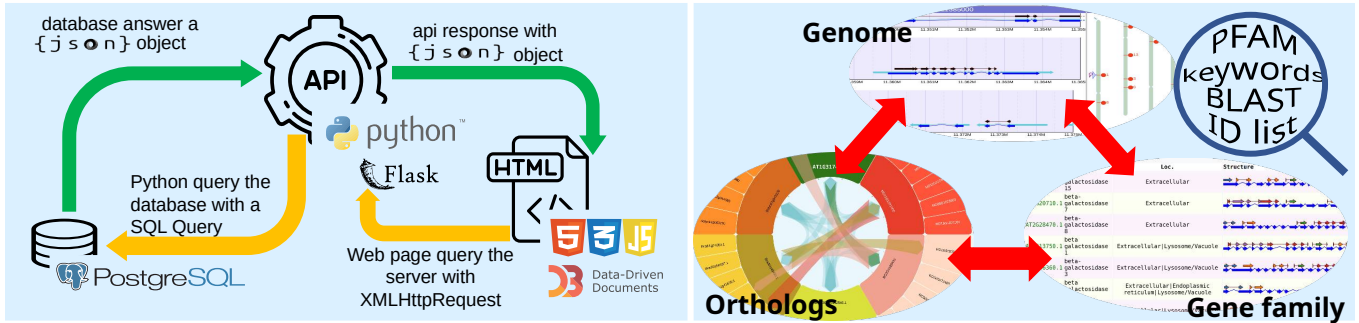
one flew over the ortholog's nest



Franck SAMSON^{1*} and Sébastien AUBOURG²
1 Université Paris-Saclay, CNRS, Univ. Evry, INRAE, LaMME, F-91037 Evry-Courcouronnes, France
2 Univ. Angers, Institut Agro, INRAE, IRHS, SFR QUASAV, F-49000 Angers, France

*franck.samson@inrae.fr

GBOT (Genome Browser and Ortholog Tracker) is an innovative tool designed for exploring gene and protein homology relationships. It offers a new visualization platform to facilitate the study of homologous gene families and the prediction of orthologs. This tool helps in understanding gene evolution across different species and transferring functional knowledge between species, particularly in genome annotation and translational biology contexts.



Search pattern

Blast sequence

PFAM motif

mRNA

Blast result

Feature menu

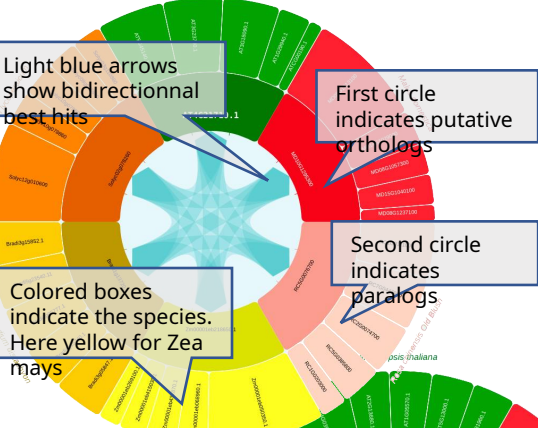
CD

Select species

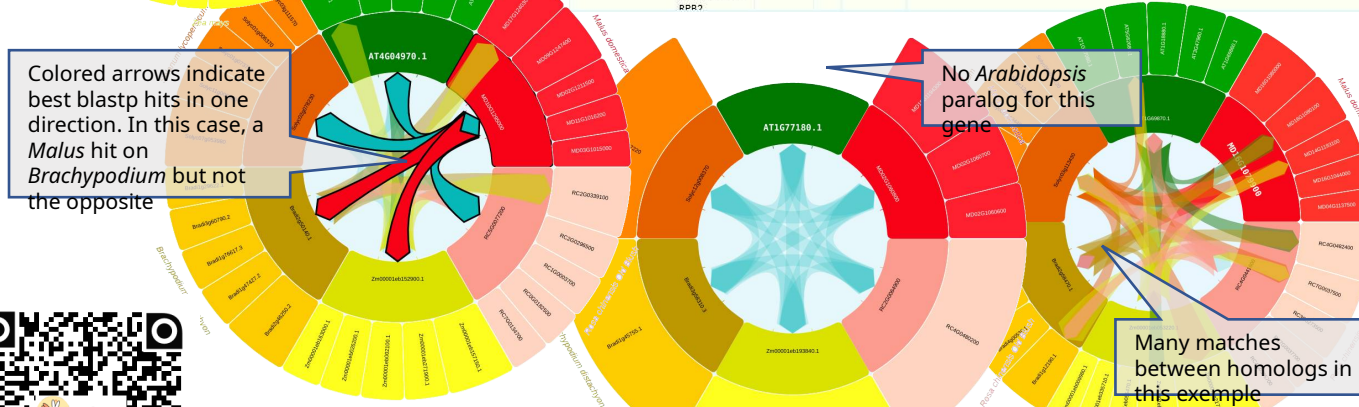
sequence position

Chromosome view

Blast result



Name	Function	Prot. Size	PFAM	Loc.	Structure
AT4G21710.1	RNA polymerase family protein	1189	7	Nucleus	
AT5G45140.1	nuclear RNA polymerase C2	1162	7	Nucleus	
AT3G23780.1	nuclear RNA polymerase D2A	1173	6	Nucleus	
AT3G18090.1	nuclear RNA polymerase D2B	1056	7	Nucleus	
AT1G29940.1	nuclear RNA polymerase A2	1179	6	Nucleus	
ATCG00190.1	RNA polymerase subunit beta	1073	5	Cytoplasm Nucleus	
MD18G1295300	DNA-directed RNA polymerase II subunit RPB2	1193	7	Nucleus	
MD05G1313100	DNA-directed RNA polymerase II subunit RPB2	1193	7	Nucleus	



Muscle alignment of orthologs

```

GGGLVDM TSDP LLAAEITAAAANGGCAAIDAPV SGGD LGAREGK LGSFAGGDAVVARLAPFLFLMGLTALYMGSPGAGORAKLGNQIAT
TINLPALARDISSARAKDGCWAVDAPV SGGD LGAREGK LGSFAGGDAVVARLAPFLFLMGLNALYMGSPGAGORAKLGNQIAT
TSSHP LAAKOTFIDAAREKNSWAVDAPV SGGD LGAREGK LGSFAGGDAVVARLAPFLFLMGLNATYMGSPGAGORAKLGNQIAT
VLSGLKPGGVTDMTSSHP LAAKOTFIDAAREKNSWAVDAPV SGGD LGAREGK LGSFAGGDAVVARLAPFLFLMGLNATYMGSPGAGORAKLGNQIAT
VLSGLKPGGVTDMTSSHP LAAKOTFIDAAREKNSWAVDAPV SGGD LGAREGK LGSFAGGDAVVARLAPFLFLMGLNATYMGSPGAGORAKLGNQIAT
  
```

http://stat.genopole.cnrs.fr/server/GBOT/index.htm